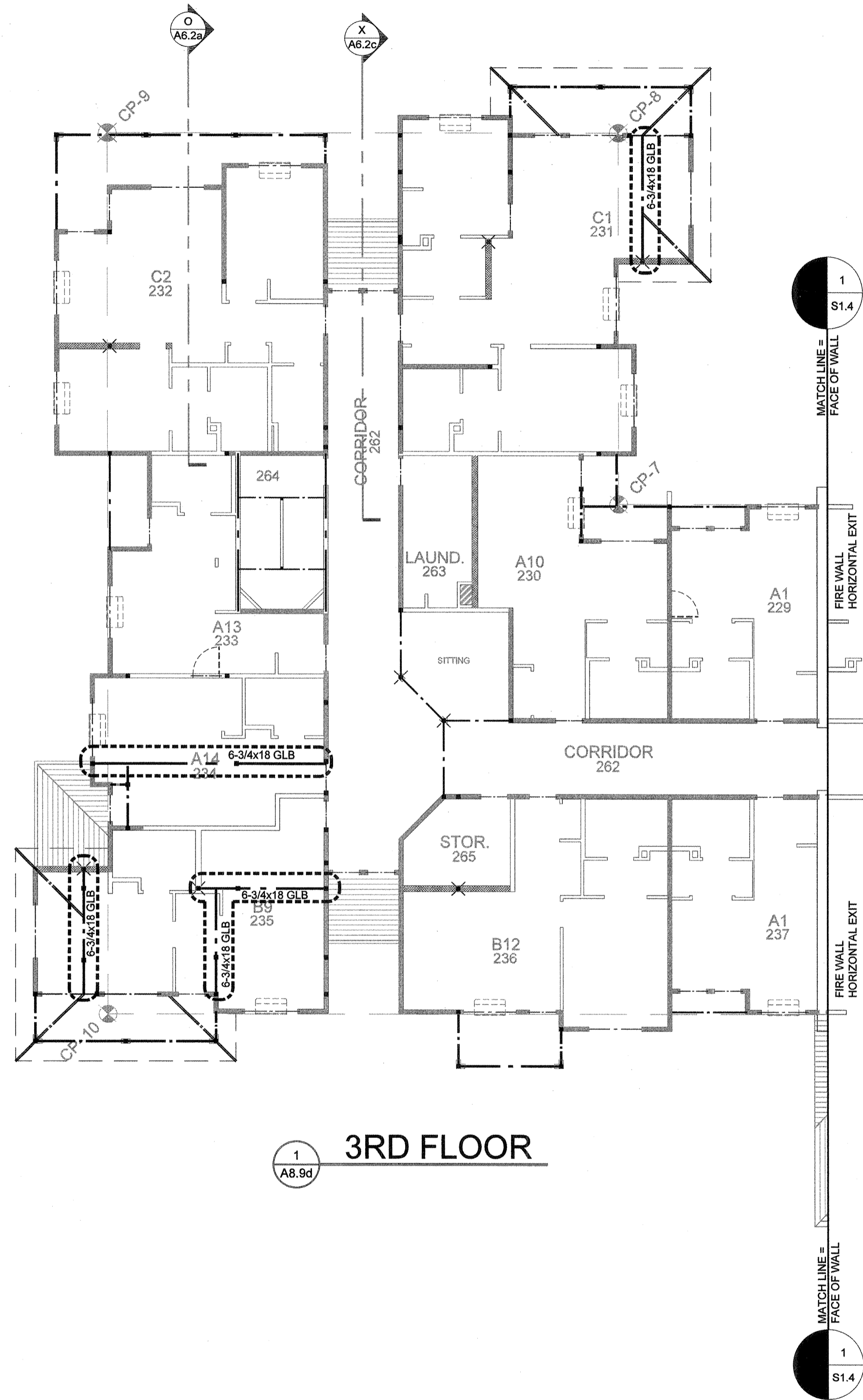


2
A8.9d
4TH FLOOR



1
A8.9d
3RD FLOOR

FIRE RATED GLB'S AS NOTED. SEE SHEET A8.9b FOR RATING INFORMATION.

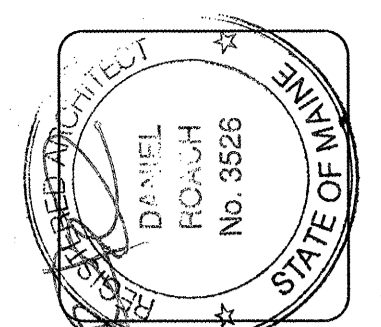
ALL TUBE STEEL COLUMNS TO BE 1 HOUR RATED PER DETAIL 'M' ON SHEET A7.1b

NOTE: REFER TO STRUCTURAL CALCULATIONS FOR ONE HOUR RATED BEAM CALCS.

SEE DETAIL 1 AND 3 ON S2.3 FOR ALLOWABLE BORING / NOTCHING OF MEMBERS.

STRUCTURAL LEGEND:

- 8 3/4 x 36 GLB = 1 HOUR RATED GLB
- 8 3/4 x 36 GLB = NON-RATED GLB
- 1 S2.1 DETAIL REFERENCE
- WOOD COLUMN DESIGNATION
- TUBE STEEL COLUMN DESIGNATION
- 2x6 @ 16" O.C. BEARING WALL U.N.O.
- 2x8 @ 16" O.C. BEARING WALL
- FIRE WALL/FIRE BARRIER
- HORIZONTAL EXIT



lenity
architecture
3150 Kettle Court SE, Salem, Oregon 97301
P: 503 399 0690 F: 503 399 0685 W: lenityarchitecture.com

COLSON AND COLSON
GENERAL CONTRACTOR, INC.
2280 MCGILCHRIST STREET SE, SUITE 200
SALEM, OREGON 97302
PHONE (503) 586-7401

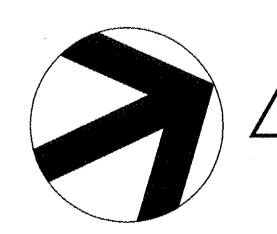
PORTLAND
RETIREMENT RESIDENCE
802 OCEAN AVE. PORTLAND, MAINE 04103

©2015 Lenity Architecture
WING 'C' FRAMING (BEAM) PROTECTION

DATE
8/28/2015
REVISED DATE

6
SHEET
A8.9d

WING 'C' FRAMING (BEAM PROTECTION)
SCALE: 3/32"=1'-0"



save: 8/27/2017 11:14 AM filename: 104-472017 1:25 PM medium: http://bauboom.com/production/104-472017 2nd floor framing beam protection.dwg A8.9d