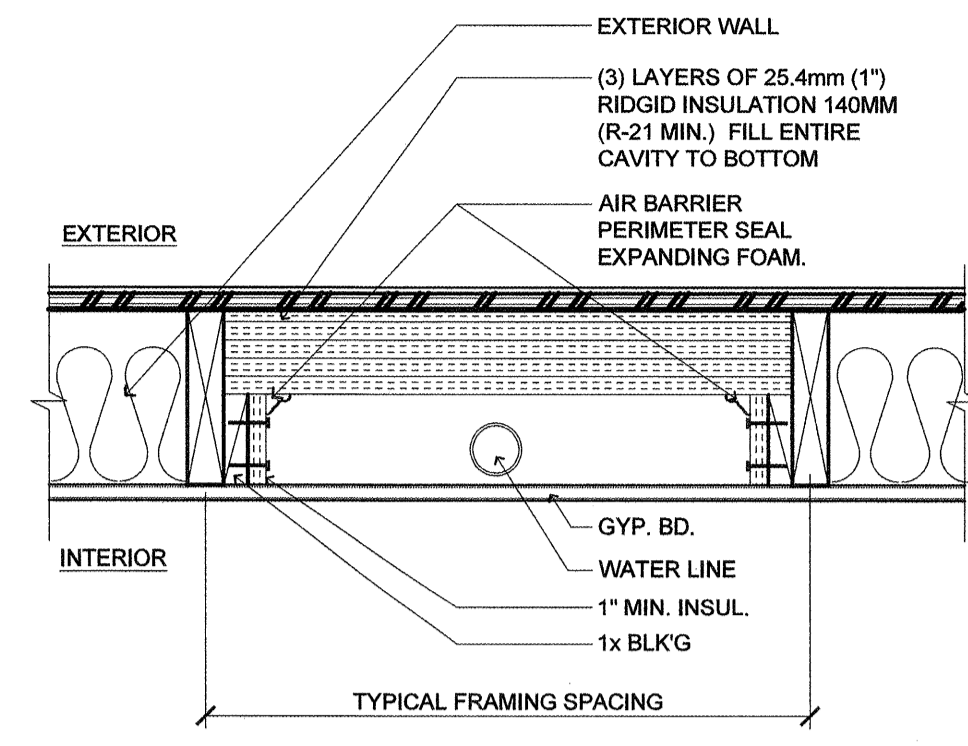
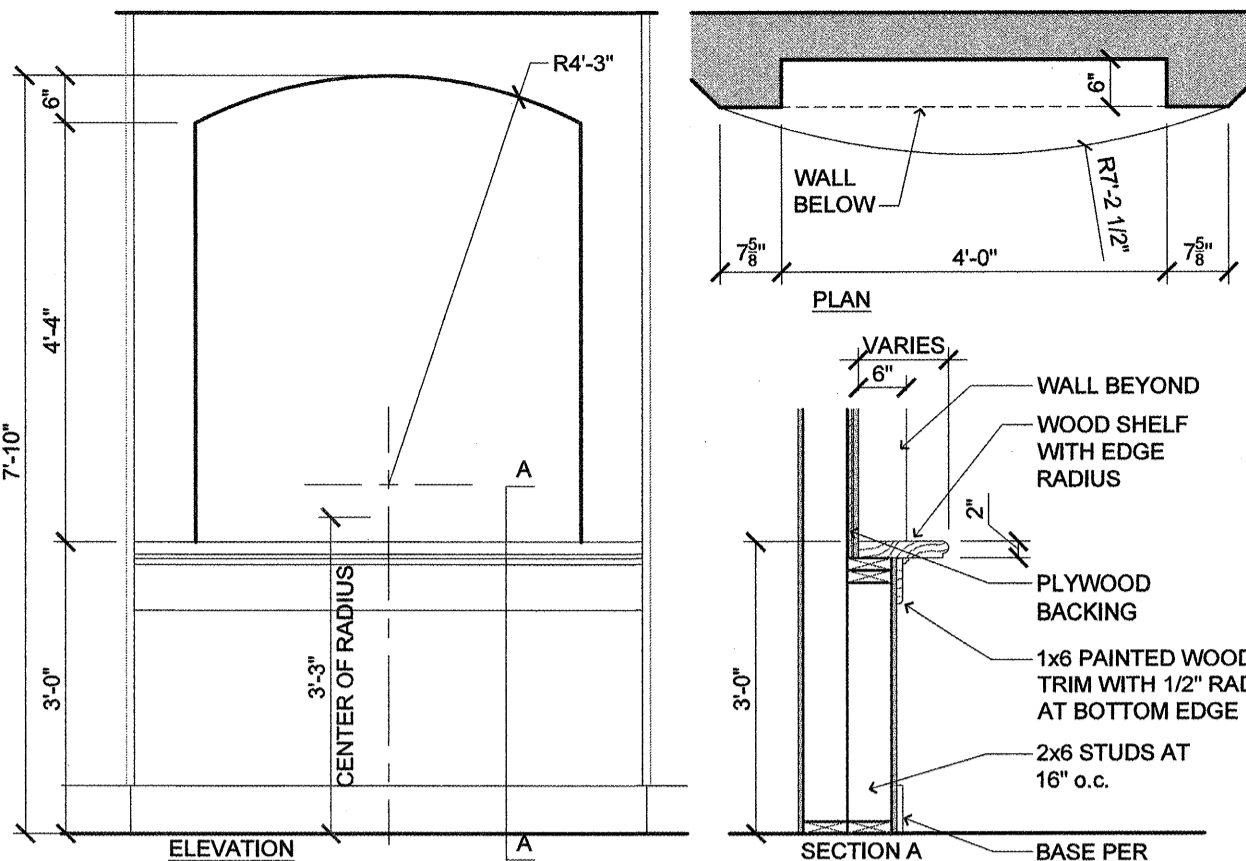


**19** SUSPENDED ACOUSTIC CEILING (ACOUSTIC TILE SUSPENSION)  
SCALE: N.T.S.

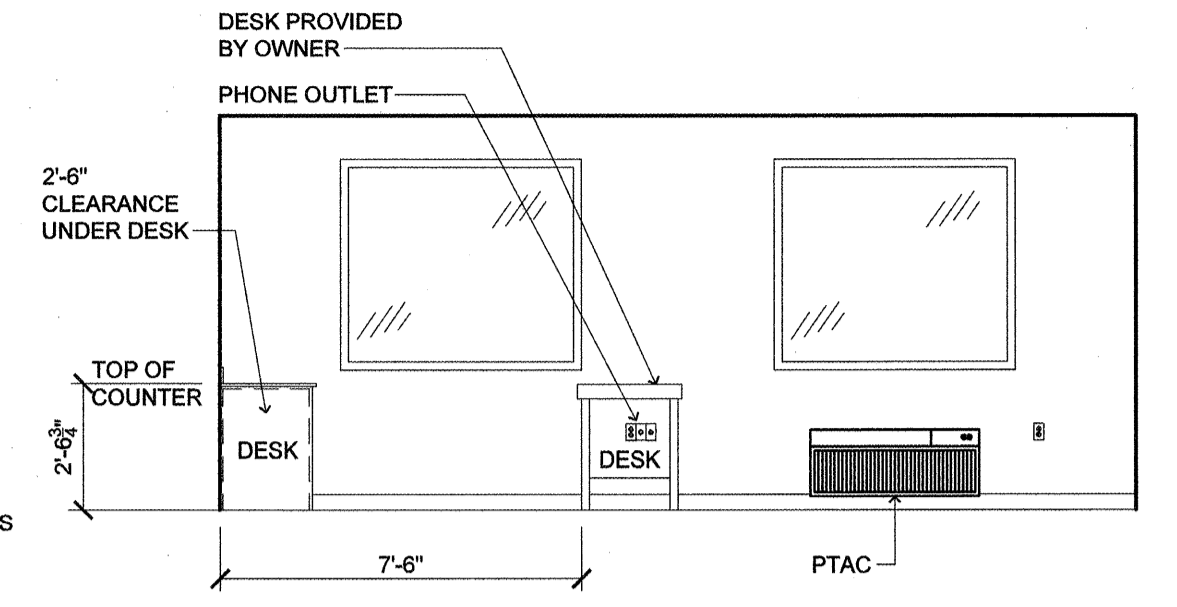
**NOT USED**



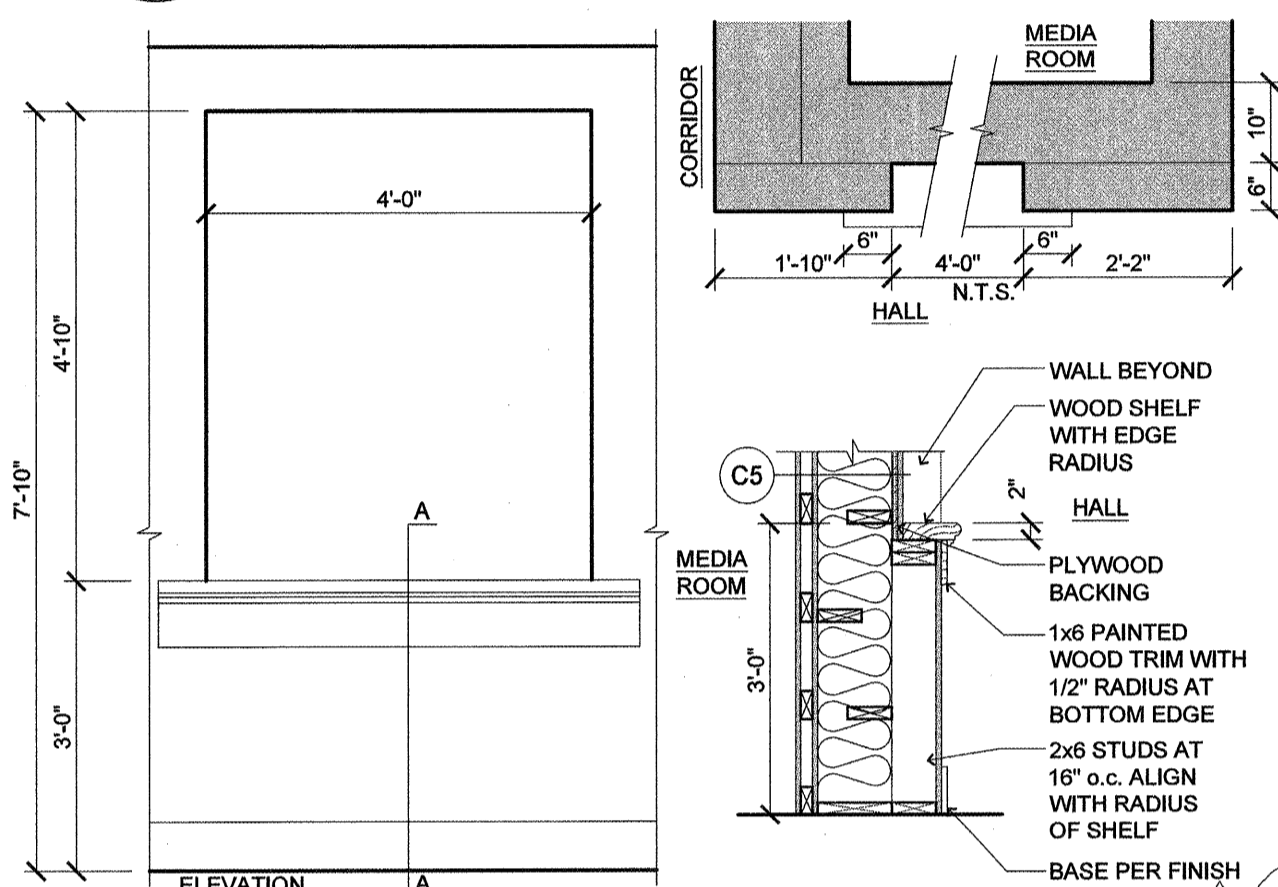
**11** INSTALLATION DETAIL (FREEZE PROTECTION)  
SCALE: 1/2" = 1'-0"



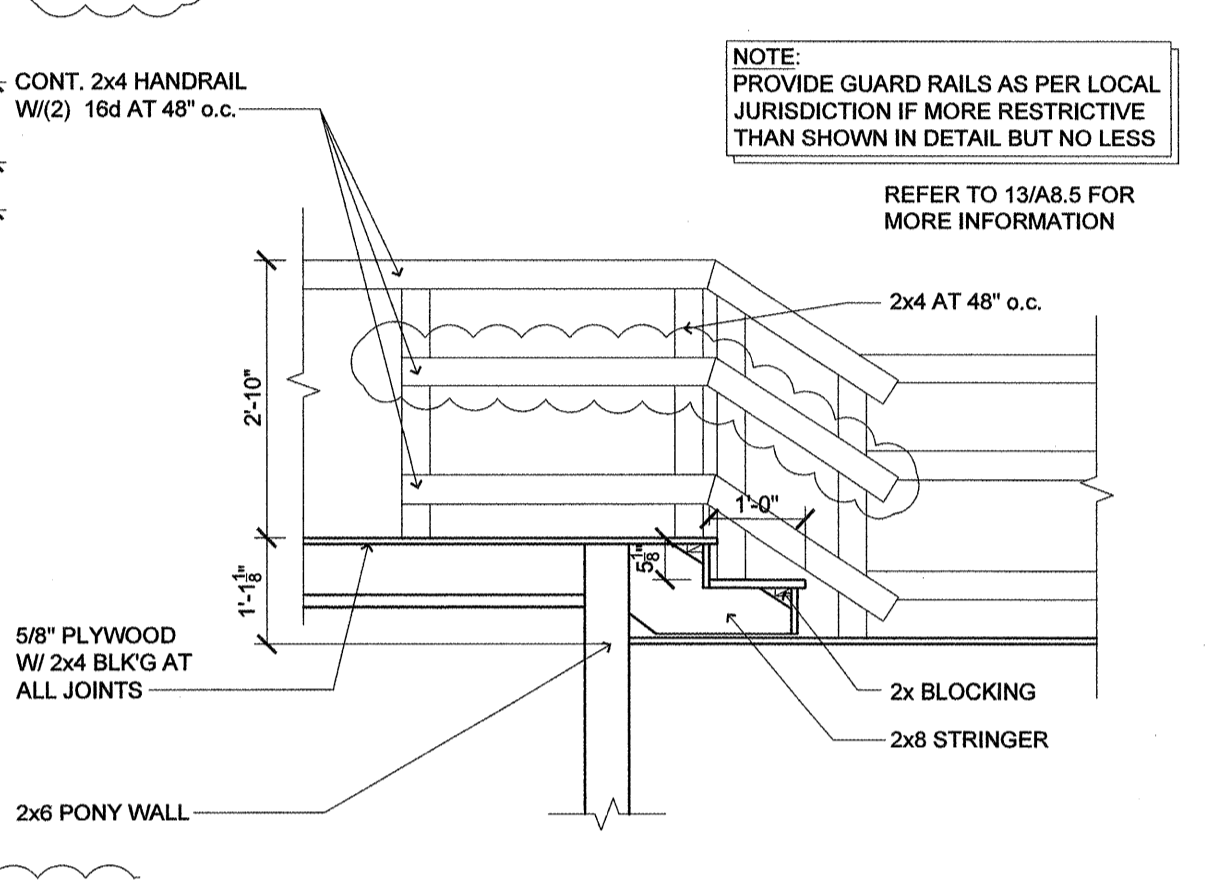
**8** WALL RECESS (PLAN / SECTION / ELEVATION)  
SCALE: 1/2" = 1'-0"



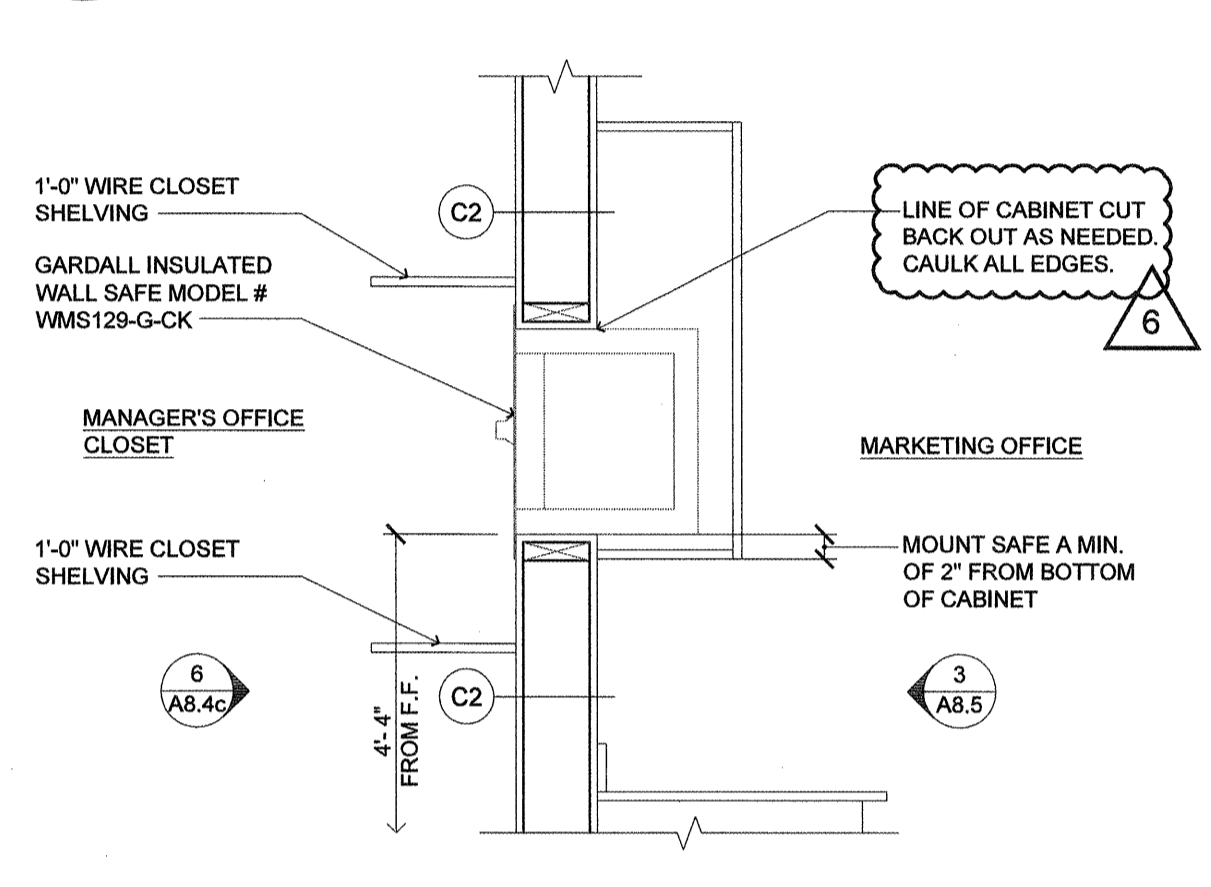
**4** OFFICE (ELEVATION)  
SCALE: 1/4" = 1'-0"



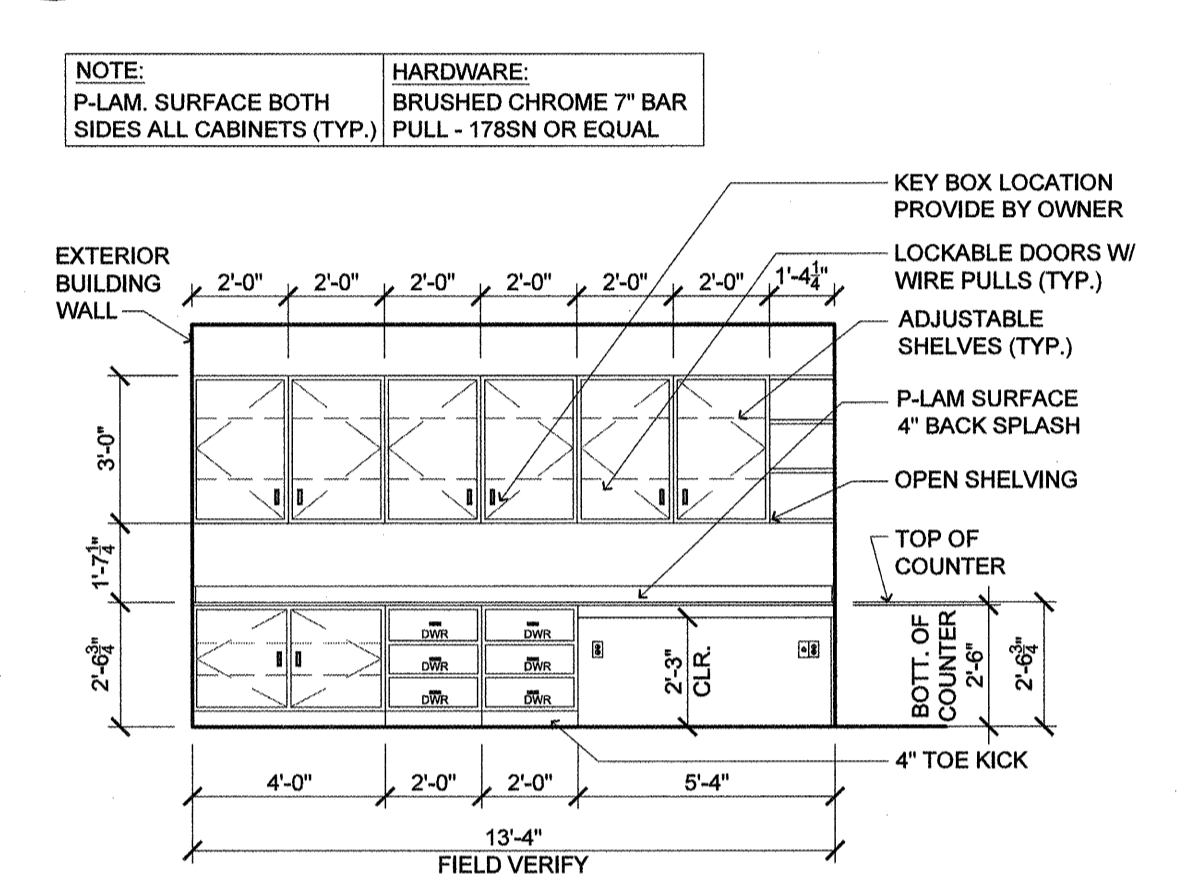
**18** WALL RECESS (PLAN / SECTION / ELEVATION)  
SCALE: 1/2" = 1'-0"



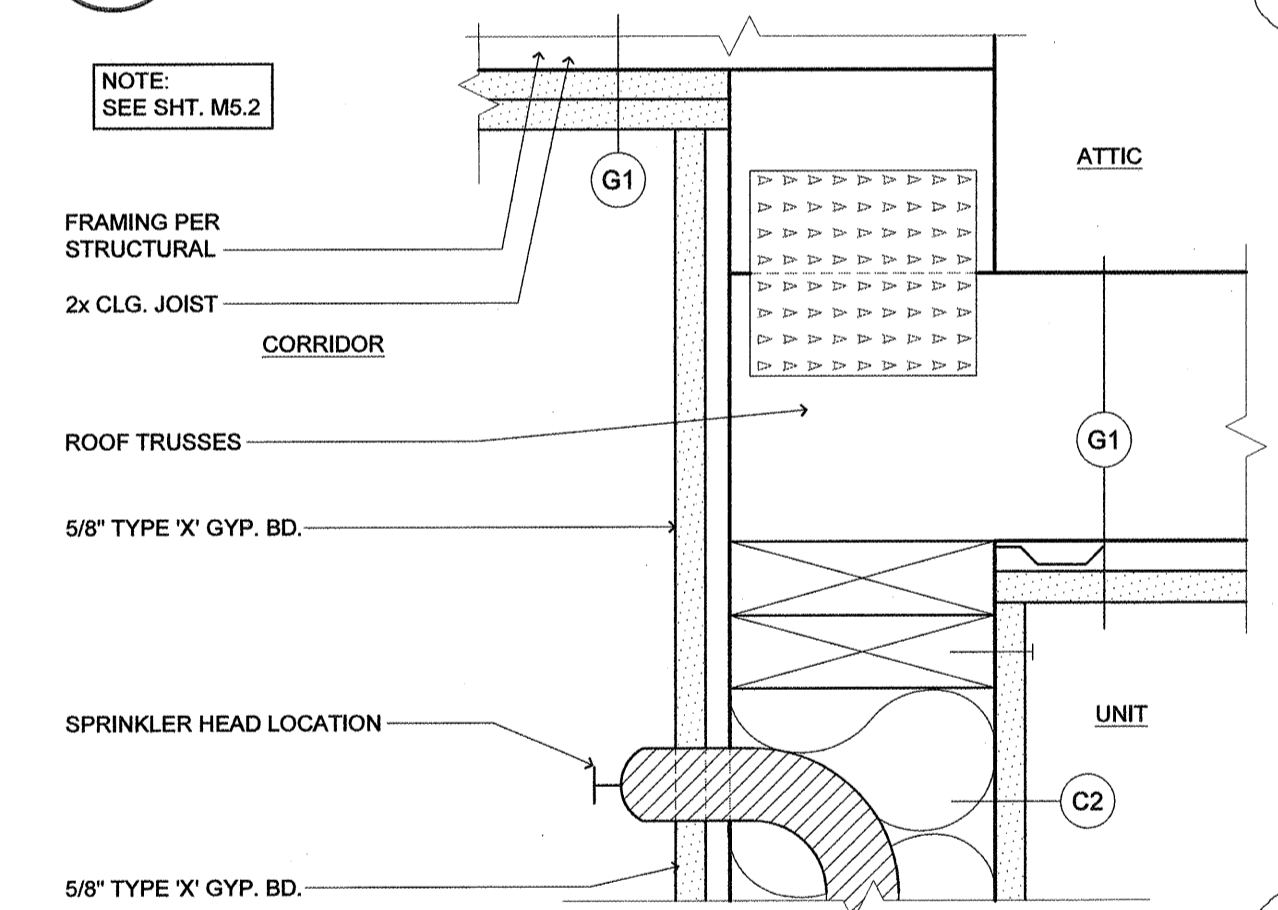
**14** STAIRS (AT ATTIC CATWALK)  
SCALE: 1/2" = 1'-0"



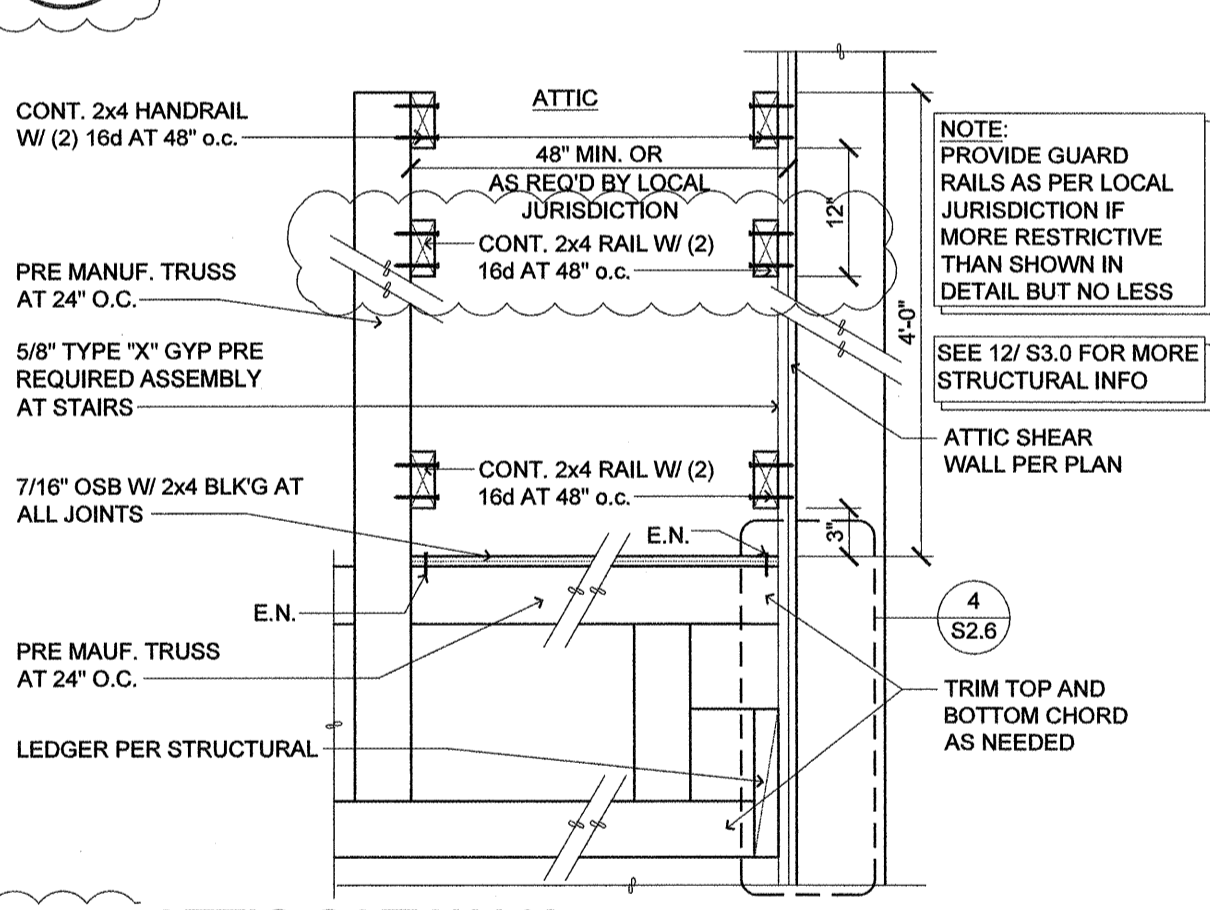
**10** WALL SAFE (AT MANAGERS CLOSET)  
SCALE: 3/4" = 1'-0"



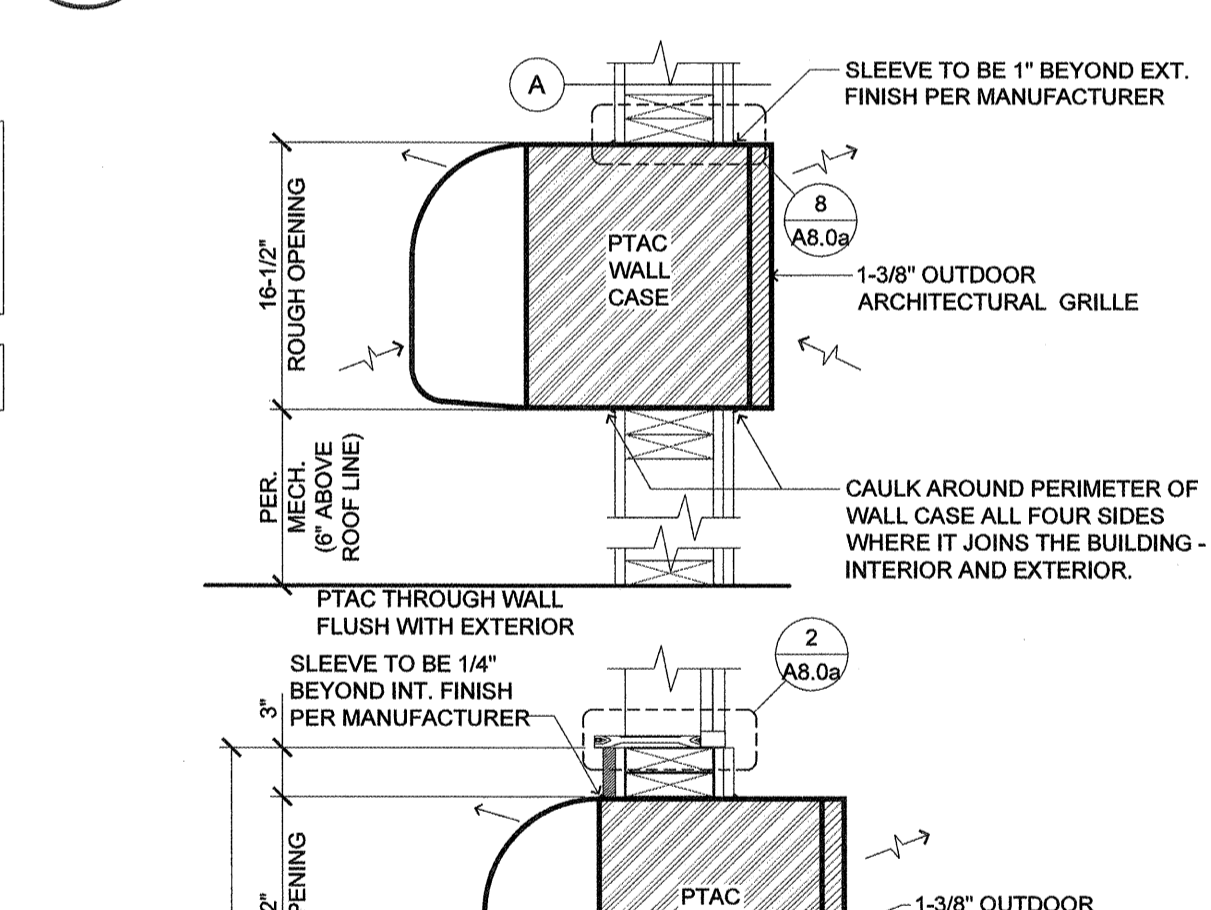
**3** MARKETING ROOM (ELEVATION)  
SCALE: 1/4" = 1'-0"



**17** SPRINKLER HEAD DRYWALL SHEAR  
SCALE: 3" = 1'-0"

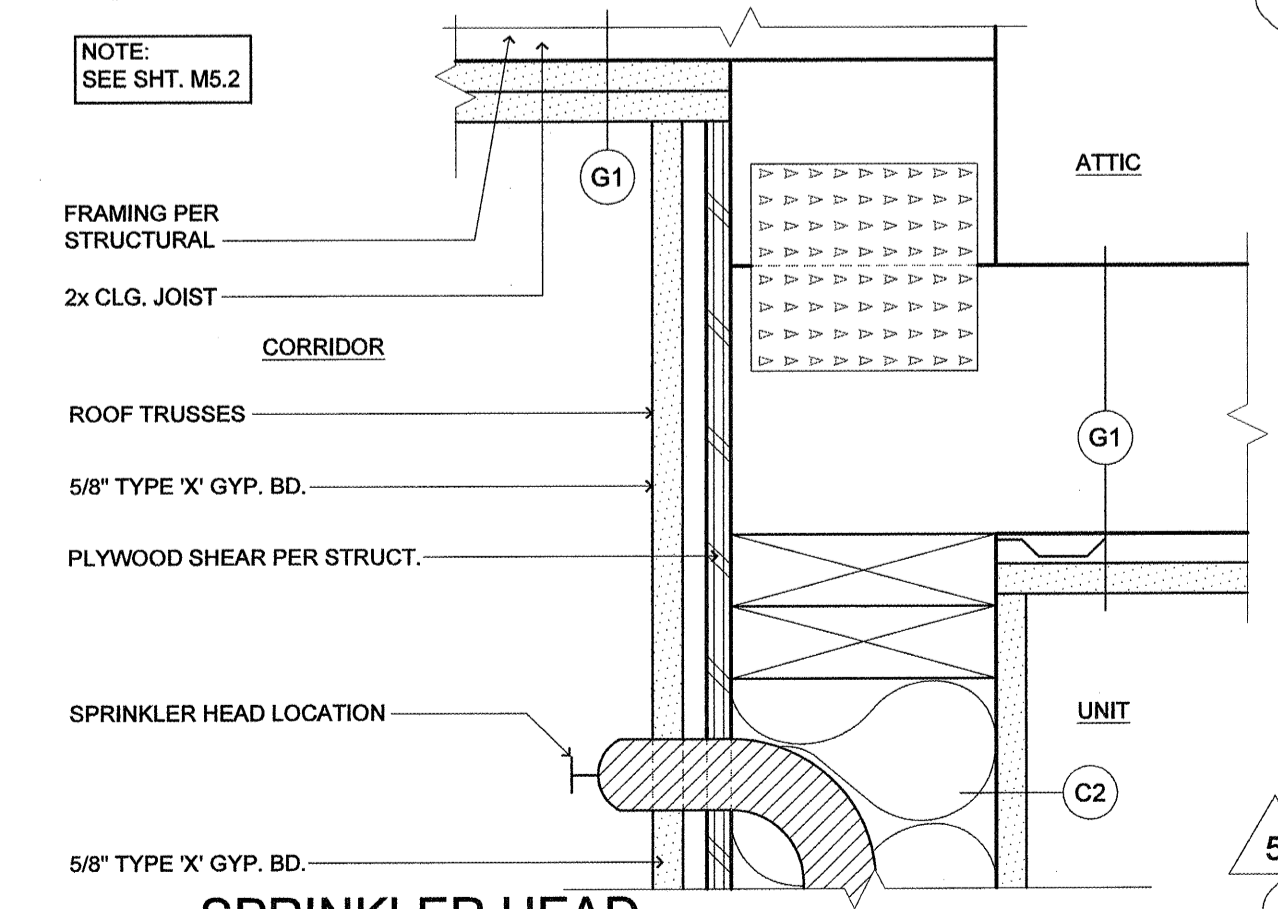


**13** ATTIC CATWALK (TYP. CONDITION - HEIGHT VARIES AT EQUIP.)  
SCALE: 1" = 1'-0"

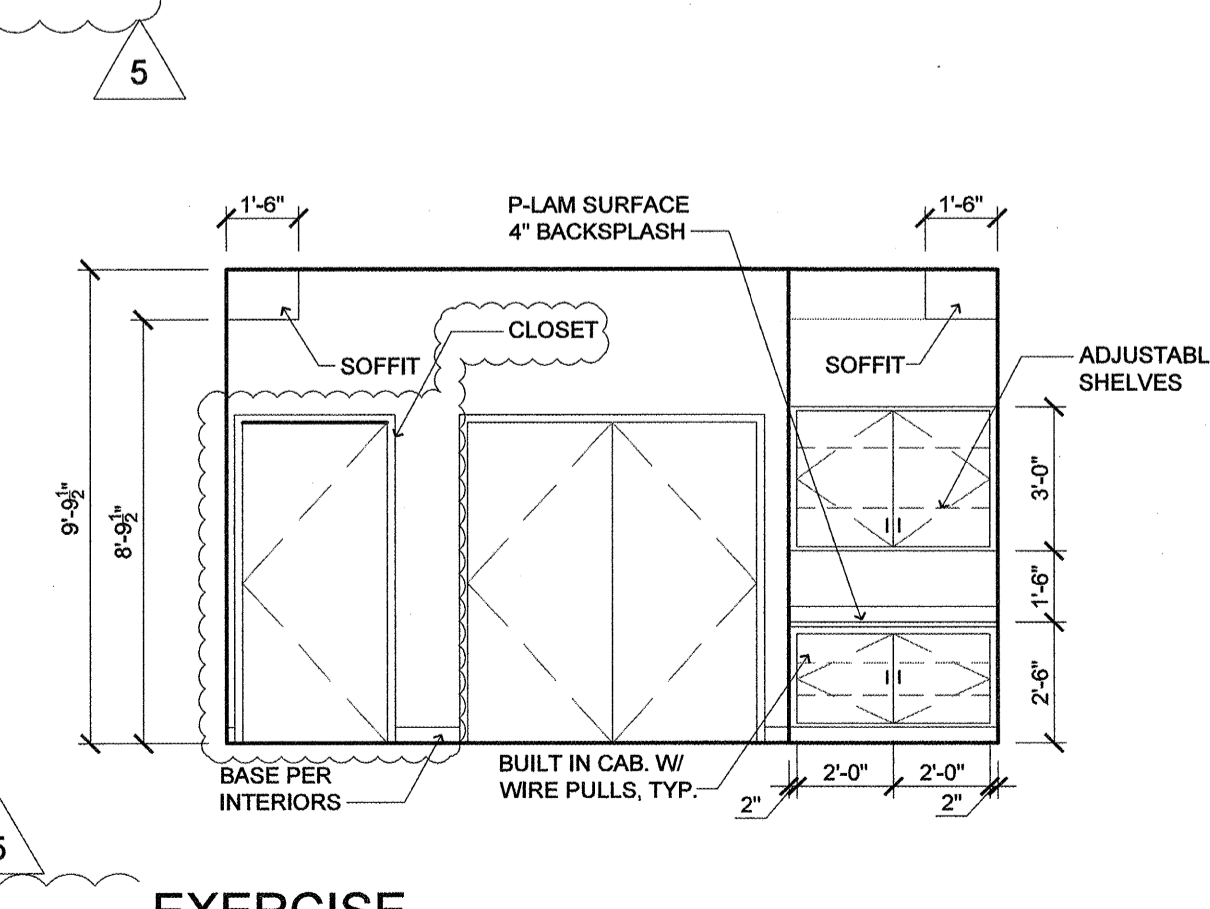


**9** TYPICAL WALL SECTION (AT PTAC)  
SCALE: 1" = 1'-0"

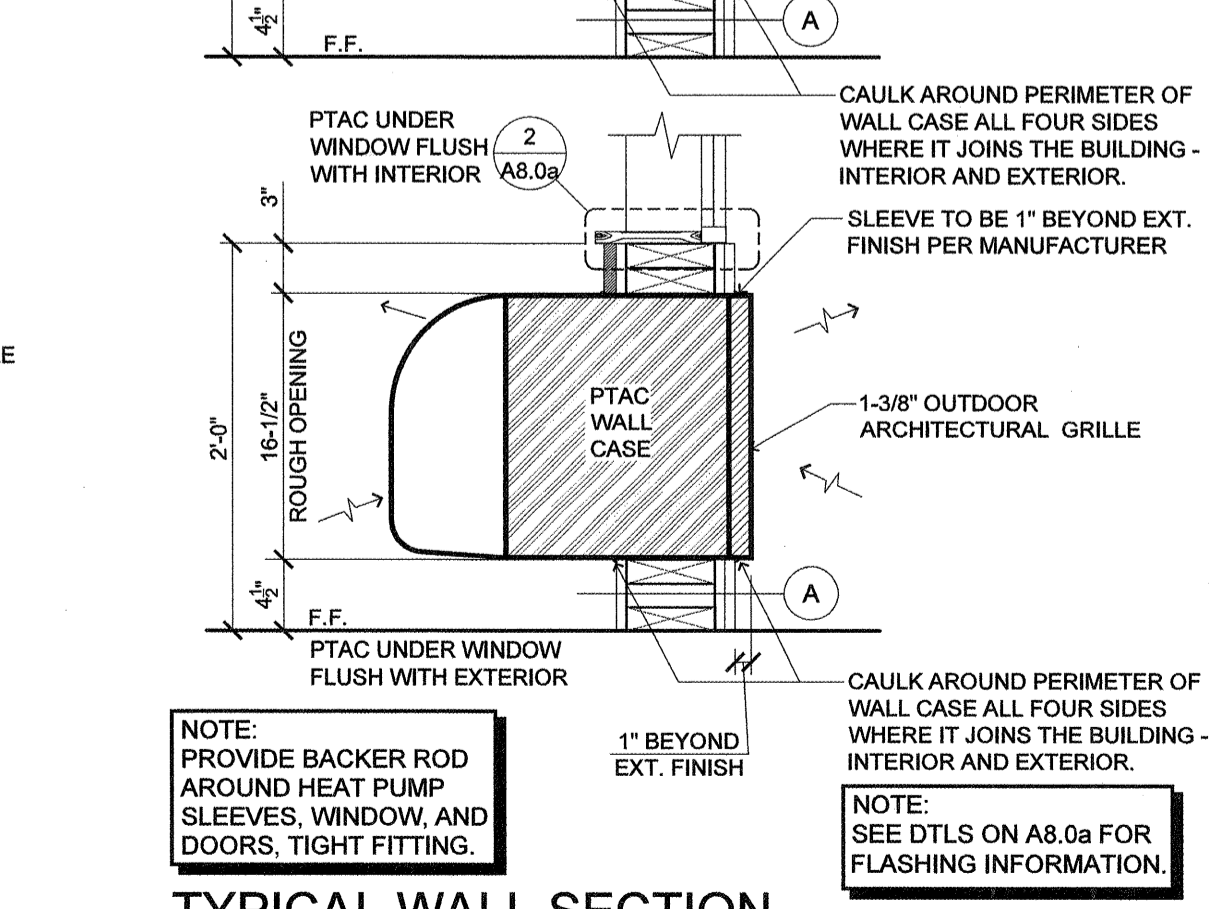
6 AND 7 NOT USED



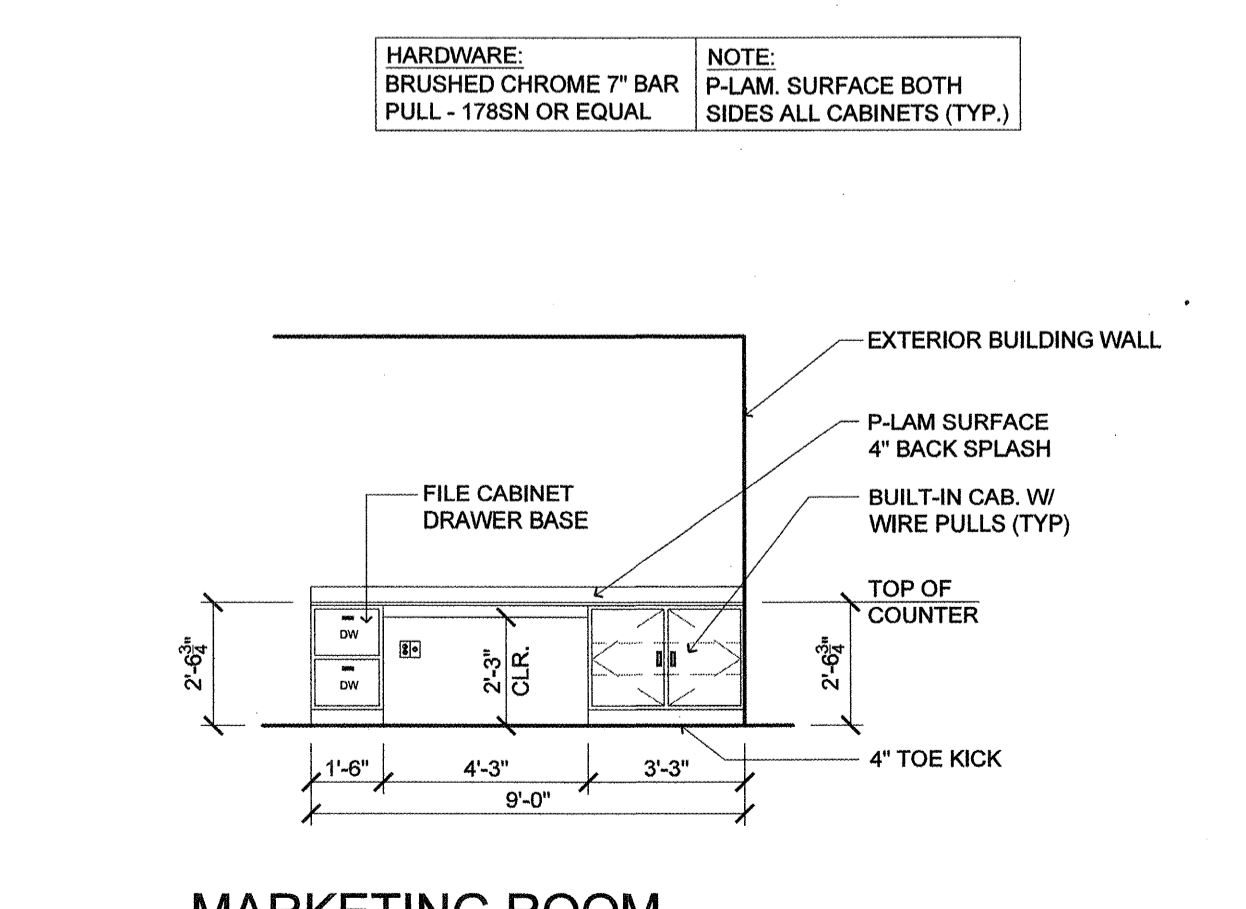
**16** SPRINKLER HEAD PLYWOOD SHEAR  
SCALE: 3" = 1'-0"



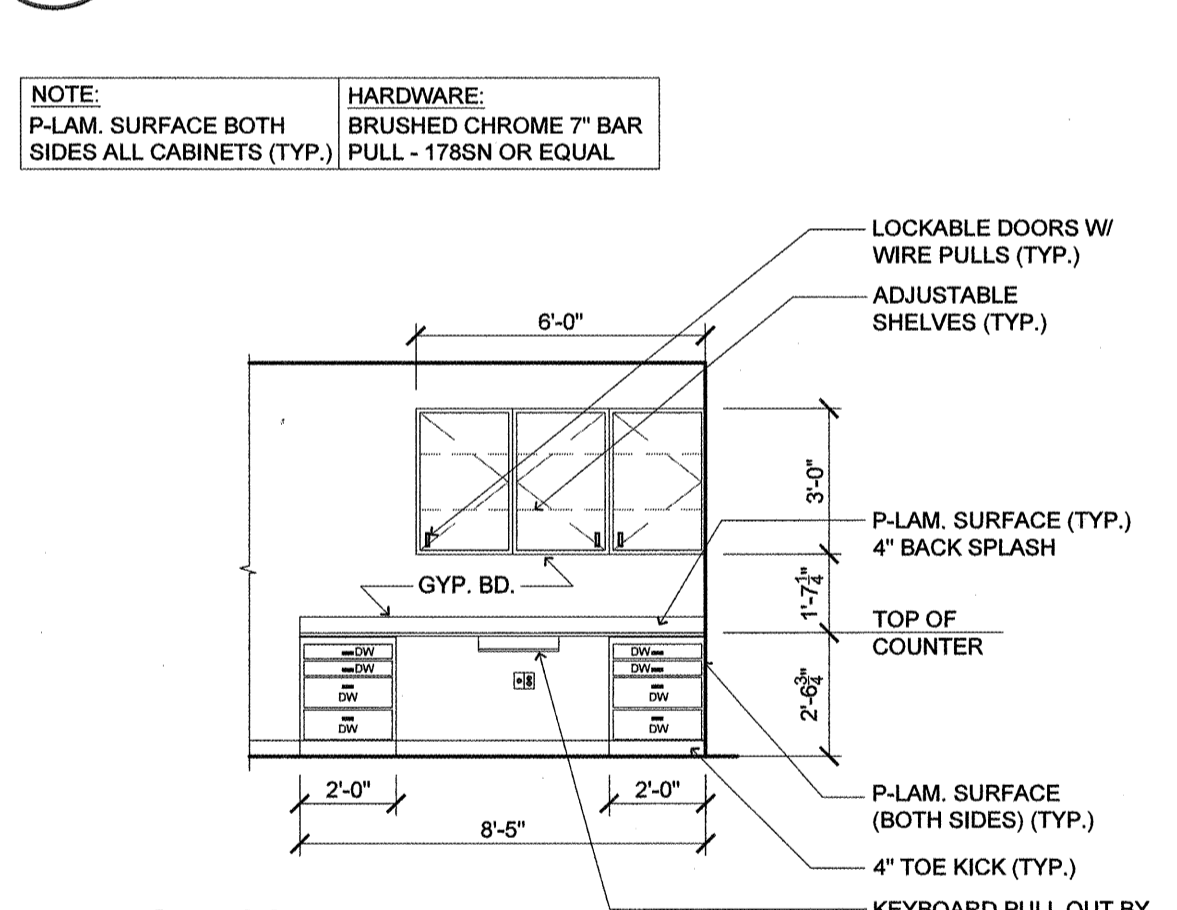
**12** EXERCISE (ELEVATION)  
SCALE: 1/4" = 1'-0"



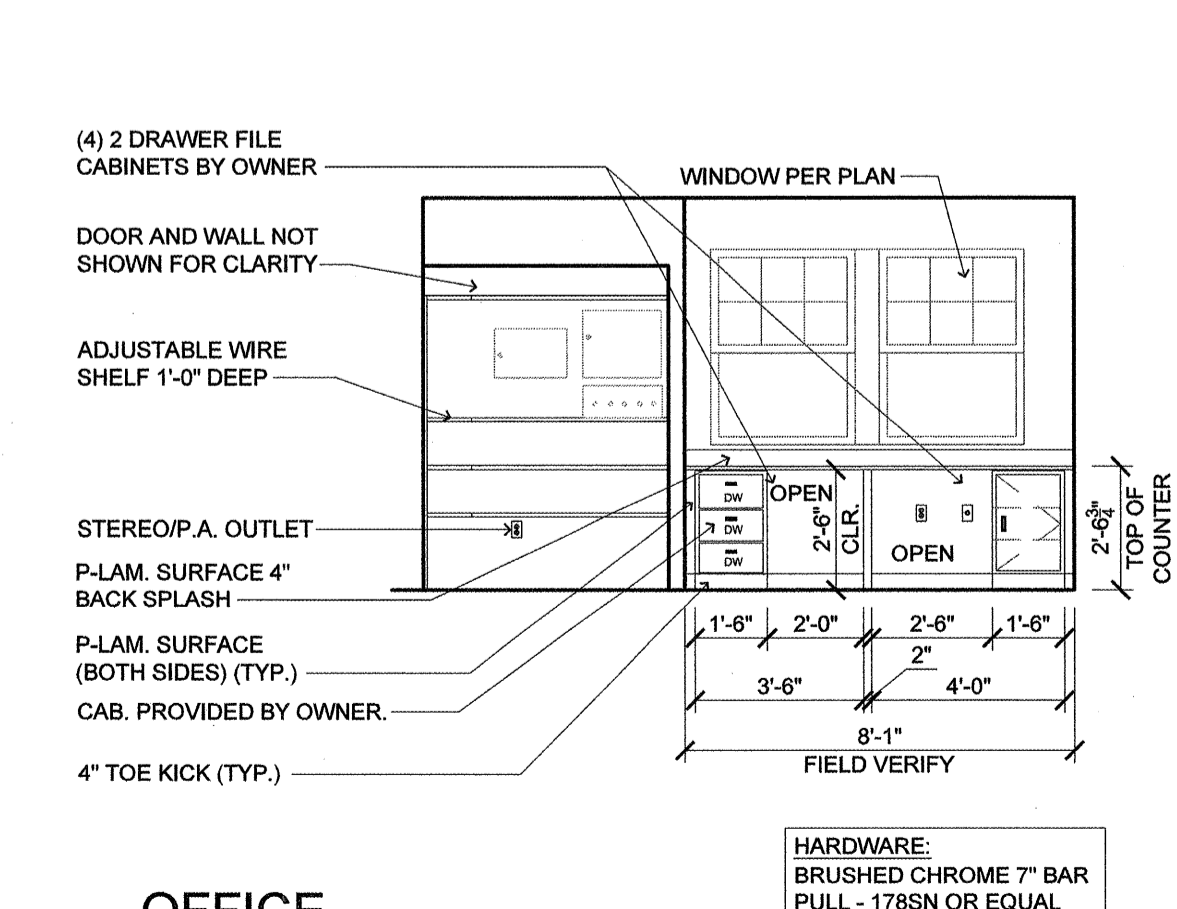
**9** TYPICAL WALL SECTION (AT PTAC)  
SCALE: 1" = 1'-0"



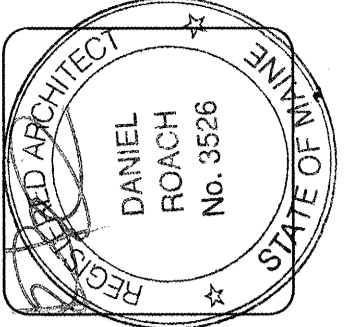
**5** MARKETING ROOM (ELEVATION)  
SCALE: 1/4" = 1'-0"



**2** OFFICE (ELEVATION)  
SCALE: 1/4" = 1'-0"



**1** OFFICE (ELEVATION)  
SCALE: 1/4" = 1'-0"



**lenity** architecture  
3150 Kappa Court SE, Salem, Oregon 97301  
P: 503.399.1090 F: 503.399.0665  
w: lenityarchitecture.com

**COLSON AND COLSON**  
GENERAL CONTRACTOR, INC.  
2260 MCGILCHRIST STREET SE, SUITE 200  
SALEM, OREGON, 97302  
PHONE (503) 586-7401

**PORTLAND**  
RETIREMENT RESIDENCE  
802 OCEAN AVE. PORTLAND, MAINE 04103

**INTERIOR**  
ELEVATIONS  
AND DETAILS

DATE: 8/28/2015  
REVISED DATE:  
SHEET: A8.5

6/7/18/2016 7/6/31/3/2017