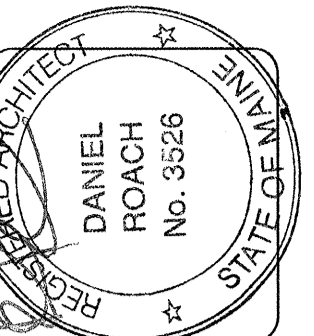


NOTE:
ALL ASSEMBLIES THIS SHEET MUST BE INSTALLED PER ASSEMBLY NUMBER LISTED ON DRAWING. ANY SUBSTITUTIONS TO ASSEMBLIES MUST BE SUBMITTED TO ARCHITECT FOR REVIEW AND APPROVAL. SUBJECT TO LOCAL APPROVAL.



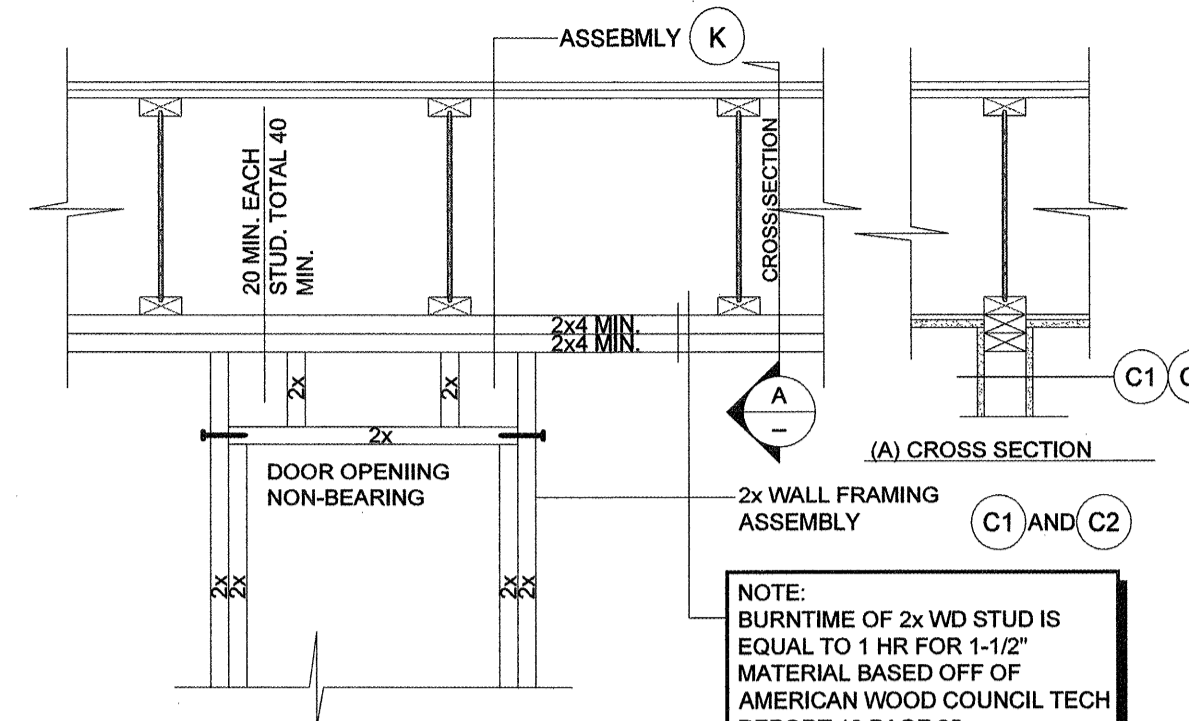
lenity
architecture
1150 1/2 Kells Court SE, Salem, Oregon 97301
P: 503 399 1050 F: 503 399 0555 W: lenityarchitecture.com

COLSON AND COLSON
GENERAL CONTRACTOR, INC.
2280 MCGILCHRIST STREET SE, SUITE 200
SALEM, OREGON, 97302
PHONE (503) 586-7401

PORTLAND
RETIREMENT RESIDENCE
802 OCEAN AVE. PORTLAND, MAINE 04103

FLOOR AND WALL TYPES

DATE
8/28/2015
REVISED DATE
SHEET
A7.1c



3 INT. SUITE WALLS (RATED NON-LOADBEARING)
SCALE: N.T.S.
T:\06\FINISH\2503\FBD\09250145

JOINTS BETWEEN GYPSUM BOARDS IN SYSTEMS RATED FOR FIRE, SOUND, OR SHEAR MUST BE CONSTRUCTED WITH THE GYPSUM BOARD EDGES IN MODERATE CONTACT. MODERATE CONTACT MEANS THAT THE EDGES ARE ESSENTIALLY TOUCHING EACH OTHER. IT IS POSSIBLE FOR THE GYPSUM BOARD EDGES TO BE IN MODERATE CONTACT YET NOT TOUCH ALONG THE ENTIRE LENGTH OF THE JOINT. THEREFORE, IN GYPSUM BOARD SYSTEMS RATED FOR FIRE, SOUND, OR SHEAR, SMALL GAPS SPACED SPORADICALLY ALONG THE JOINT ARE ACCEPTABLE AS LONG AS THE BOARD EDGES ARE ESSENTIALLY TOUCHING ONE ANOTHER. GAPS UP TO 1/4" MUST BE FILLED WITH A THROUGH-PENETRATION SEALANT (FIRE CAULK). GAPS OVER 1/4" ARE NOT ACCEPTABLE.

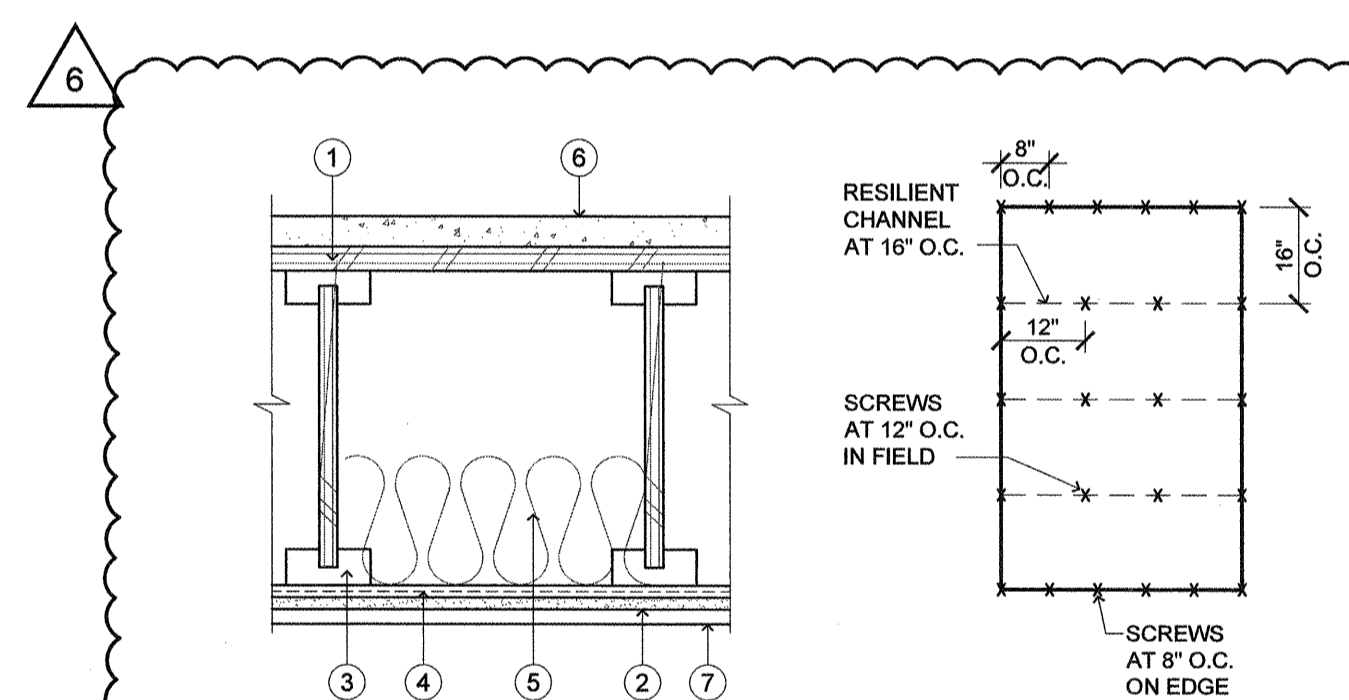
708.4 CONTINUITY. FIRE PARTITIONS SHALL EXTEND FROM THE TOP OF THE FLOOR ASSEMBLY BELOW TO THE UNDERSIDE OF THE FLOOR OR ROOF SLAB OR DECK ABOVE OR TO THE FIRE-RESISTANCE-RATED FLOOR/CEILING OR ROOF/CEILING ASSEMBLY ABOVE, AND SHALL BE SECURELY ATTACHED THERETO. IF THE PARTITIONS ARE NOT CONTINUOUS TO THE DECK, AND WHERE CONSTRUCTED OF COMBUSTIBLE CONSTRUCTION, THE SPACE BETWEEN THE CEILING AND THE DECK ABOVE, WHERE CONSTRUCTED OF COMBUSTIBLE CONSTRUCTION, SHALL BE FIRE BLOCKED OR DRAFT STOPPED IN ACCORDANCE WITH SECTIONS 717.2.1 AND 717.3.1 AT THE PARTITION LINE. THE SUPPORTING CONSTRUCTION SHALL BE PROTECTED TO AFFORD THE REQUIRED FIRE-RESISTANCE RATING OF THE WALL SUPPORTED, EXCEPT FOR TENANT AND SLEEPING UNIT SEPARATION WALLS AND EXIT ACCESS CORRIDOR WALLS IN BUILDINGS OF TYPE IIB, IIBB AND VB CONSTRUCTION.

717.3 DRAFT STOPPING IN FLOORS. IN COMBUSTIBLE CONSTRUCTION, DRAFT STOPPING SHALL BE INSTALLED TO SUBDIVIDE FLOOR/CEILING ASSEMBLIES IN THE LOCATIONS PRESCRIBED IN SECTIONS 717.3.2 THROUGH 717.3.3

717.3.1 DRAFT STOPPING MATERIALS. DRAFTSTOPPING MATERIALS SHALL NOT BE LESS THAN 0.5-INCH (12.7 mm) GYPSUM BOARD, 0.375-INCH (9.5 mm) WOOD STRUCTURAL PANEL, 0.375-INCH (9.5 mm) PARTICLEBOARD, 1-INCH (25-mm) NOMINAL LUMBER, CEMENT FIBERBOARD, BATT'S OR BLANKETS OF MINERAL WOOL OR GLASS FIBER, OR OTHER APPROVED MATERIALS ADEQUATELY SUPPORTED. THE INTEGRITY OF DRAFT STOPS SHALL BE MAINTAINED.

NOTE:
BURNTIME OF 2x WD STUD IS EQUAL TO 1 HR FOR 1-1/2" MATERIAL BASED ON AMERICAN WOOD COUNCIL TECH REPORT 10 PAGE 25

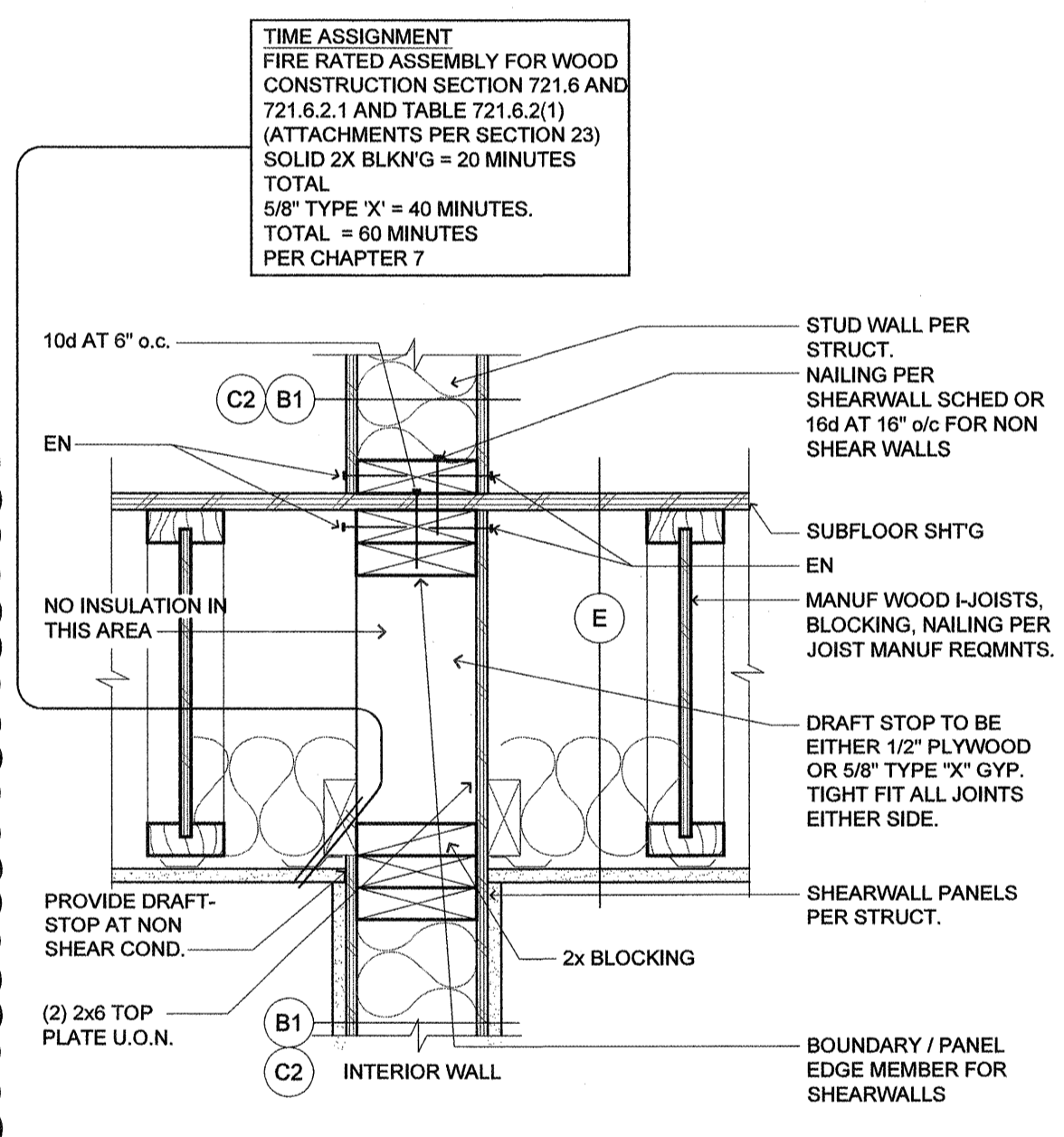
1 HOUR WALL ASSEMBLY MEETS 1 HOUR FLOOR/CEILING ASSEMBLY RATING DOES NOT CHANGE RATING. RATING IS MORE BASED OFF BURN TIME OF NON LOAD BEARING LEDGER BASED OFF THE FOLLOWING



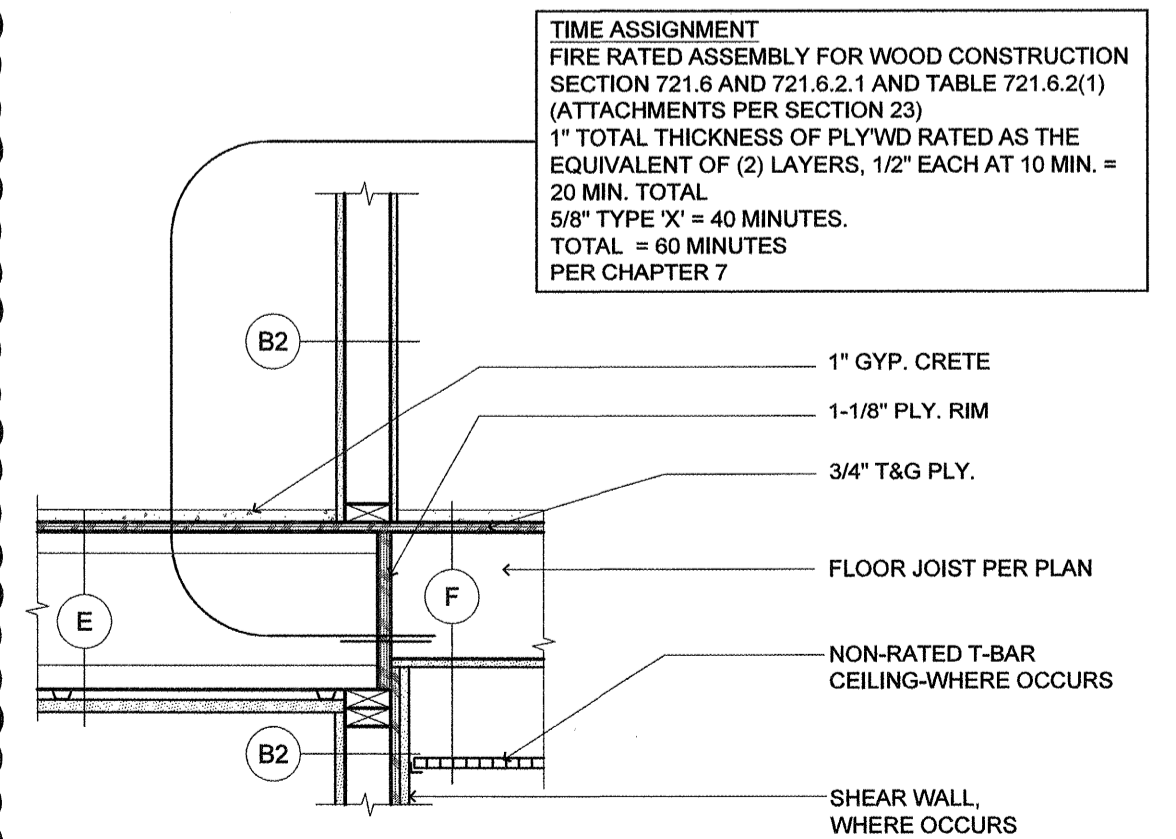
CONSTRUCTION ASSEMBLY
INTERTEK DESIGN NUMBER RBL / SFWT 60-02

NOTES	DESCRIPTION
1	FLOOR SHEATHING: MIN. 5/8 IN. THICK WOOD SHEATHING, DESIGNED AND INSTALLED PER CODE REQUIREMENTS. WHEN USED AS A ROOF ASSEMBLY, MIN. 1/2 IN. THICK WOOD SHEATHING MAY BE USED, WHEN DESIGNED AND INSTALLED PER CODE REQUIREMENTS.
2	GYPSUM WALLBOARD: MINIMUM 5/8" THICK TYPE "C" GYPSUM WALLBOARD INSTALLED WITH LONG DIMENSION PERPENDICULAR TO RESILIENT CHANNELS AND FASTENED TO EACH CHANNEL WITH MINIMUM 1" LONG TYPE S DRYWALL SCREWS, FASTENERS SPACED 12 IN. OC IN THE FIELD, 8 IN. OC AT WALLBOARD END JOINTS, AND 1-1/2 IN. FROM PANEL EDGES AND ENDS. EDGE JOINTS SHALL BE CENTERED BETWEEN JOISTS. END JOINTS OF WALLBOARD STAGGERED.
3	STRUCTURAL MEMBERS: CERTIFIED COMPANY: REDBUILT LLC CERTIFIED PRODUCT: SHOP FABRICATED WOOD TRUSSES CERTIFIED MODELS: RED-1 JOIST SERIES: RED-190, RED-190H AND RED-190HS. OPEN-WEB TRUSS SERIES: RED-L, RED-W, RED-M AND RED-H. 9-1/4" MIN. DEEP JOISTS SPACED A MAX. OF 24 IN. ON CENTER (OC) (MIN. 1-1/2 IN. X 3-1/2 IN. BOTTOM FLANGE DIMENSIONS), INSTALLED IN ACCORDANCE WITH THE CODE. THE MAX. SPACING MAY BE INCREASED TO 48 IN. OC WHEN THE CEILING IS APPLIED TO STRIPPING SPACED A MAX. OF 24 IN. OC. THE STRIPPING MUST BE A NOMINAL 2 IN. X 4 IN. CONSTRUCTION-GRADE LUMBER ATTACHED TO THE JOISTS BOTTOM FLANGE USING TWO 10D NAILS.
4	RESILIENT CHANNELS: MIN. 0.019 IN. THICK GALVANIZED STEEL RESILIENT CHANNELS, ATTACHED PERPENDICULAR TO JOISTS USING 1-5/8" LONG DRYWALL SCREWS. RESILIENT CHANNELS SPACED A MAX. OF 16 IN. OC. ADDITIONAL CHANNELS ARE REQUIRED AT GYPSUM BOARD END JOINTS SO THAT EACH BOARD IS ATTACHED TO A SEPARATE CHANNEL. THESE ADDITIONAL CHANNELS SHALL EXTEND TO THE NEXT JOIST ON EACH SIDE OF THE BOARD END JOINT.
5	INSULATION: MIN. 3-1/2 IN. THICK MINERAL WOOL INSULATION BATTS - 2.5 PCF (MIN.), FRICTION FITTED BETWEEN THE BOTTOM FLANGES OF THE JOISTS AND SUPPORTED BY RESILIENT CHANNELS. ENDS OF BATTS SHALL BE CENTERED OVER RESILIENT CHANNELS AND TIGHTLY BUTTED.
ACTUAL FIRE RESISTANCE RATING: 1 HOUR FIRE	
STC RATING: 60 (WITH CEMENT TOPPING AND CARPET/PAD)	
FINISHES - OPTIONAL	
6	FLOOR TOPPING: 1" GYPSUM CONCRETE, LIGHTWEIGHT OR NORMAL CONCRETE TOPPING. WHEN USED AS A ROOF ASSEMBLY, MATERIALS FOR A BUILT-UP ROOF COVERING THAT ARE DESCRIBED IN AN ASSEMBLY THAT PROVIDES A CLASS A, B, OR C RATING ON COMBUSTIBLE WOOD DECKS MAY BE USED.
7	APPLY 5/8" QUIET ROCK 530 W/ GREEN GLUE OVER 1-HR RATED ASSEMBLY. FINISH WITH ACOUSTIC PAINT.
STC RATING - 55 PER 2012 OBC - VOLUME 2 - "SB3" TABLE 2 - ASSEMBLY #F14b	

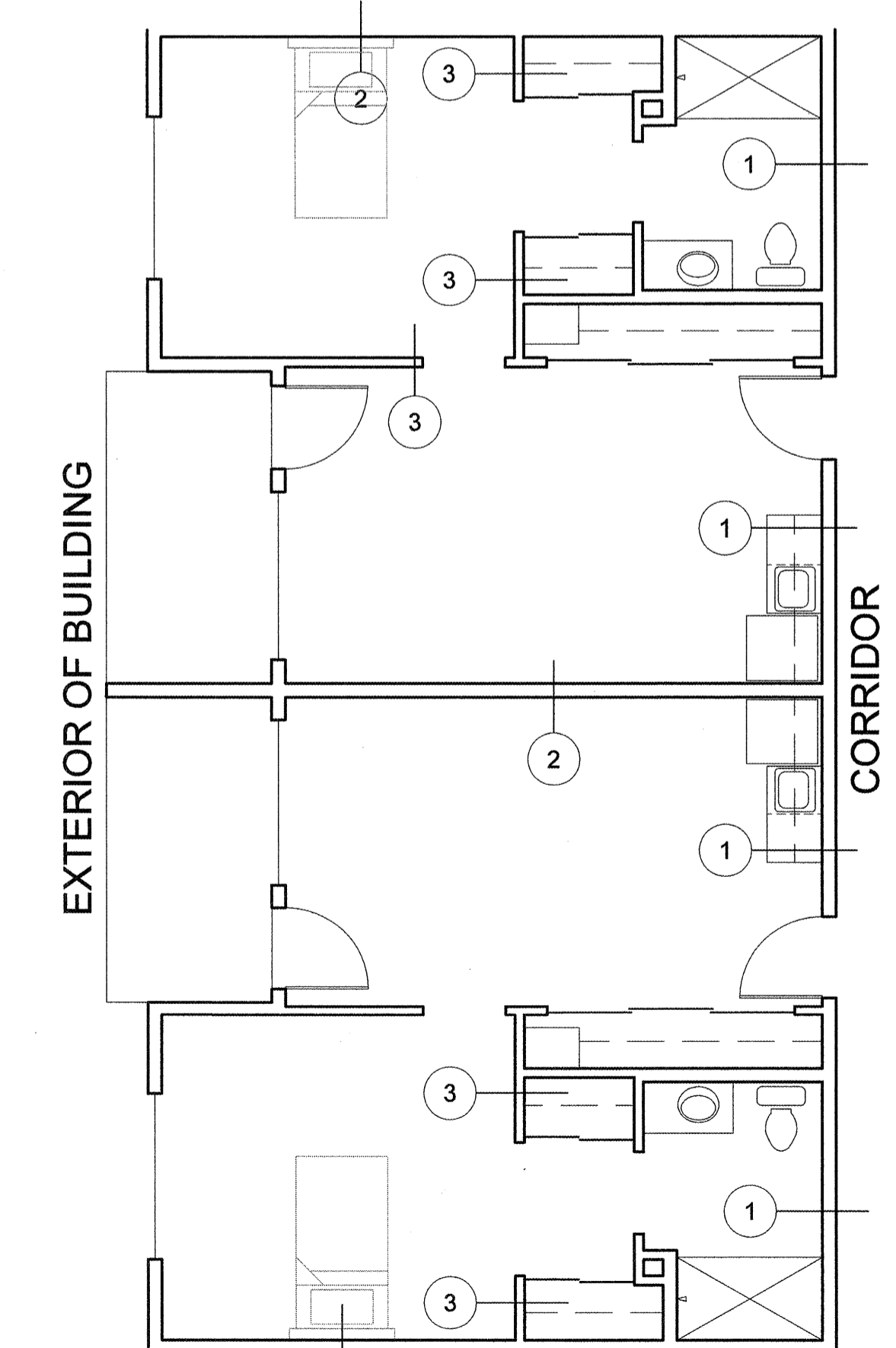
6 FLOOR CEILING ASSEMBLY
SCALE: 1-1/2"=1'-0"
T:\06\FINISH\2503\FBD\09250227N



2 WALL/FLOOR INTERSECTION (DRAFT STOP/SMOKE BARRIER)
SCALE: N.T.S.
T:\06\FINISH\2503\FBD\09250145



1 SECTION AT CORRIDOR (ALL TRADES TO COORDINATE AVAILABLE SPACE)
SCALE: 1-1/2"=1'-0"
T:\06\FINISH\2503\FBD\09250132-45T



TYPICAL SUITES (PLAN VIEW)
SCALE: 1/4"=1'-0"

8/28/2015 4:54 PM lenity_architecture 2503\FBD\09250132-45T 1: floor and wall types.rvt.dwg 1/1 c