

**lenity architecture**  
 3150 Kettle Court SE, Salem, Oregon 97301  
 P 503 399 0950 F 503 399 0555 W lenityarchitecture.com

**COLSON AND COLSON**  
 GENERAL CONTRACTOR, INC.  
 2260 McILCHRIST STREET SE, SUITE 200  
 SALEM, OREGON, 97302  
 PHONE (503) 586-7401

**PORTLAND RETIREMENT RESIDENCE**  
 802 OCEAN AVE. PORTLAND, MAINE 04103

**SUITE PLANS**

DATE: 8/28/2015  
 REVISED DATE:  
 SHEET: A5.9

**GENERAL NOTES:**

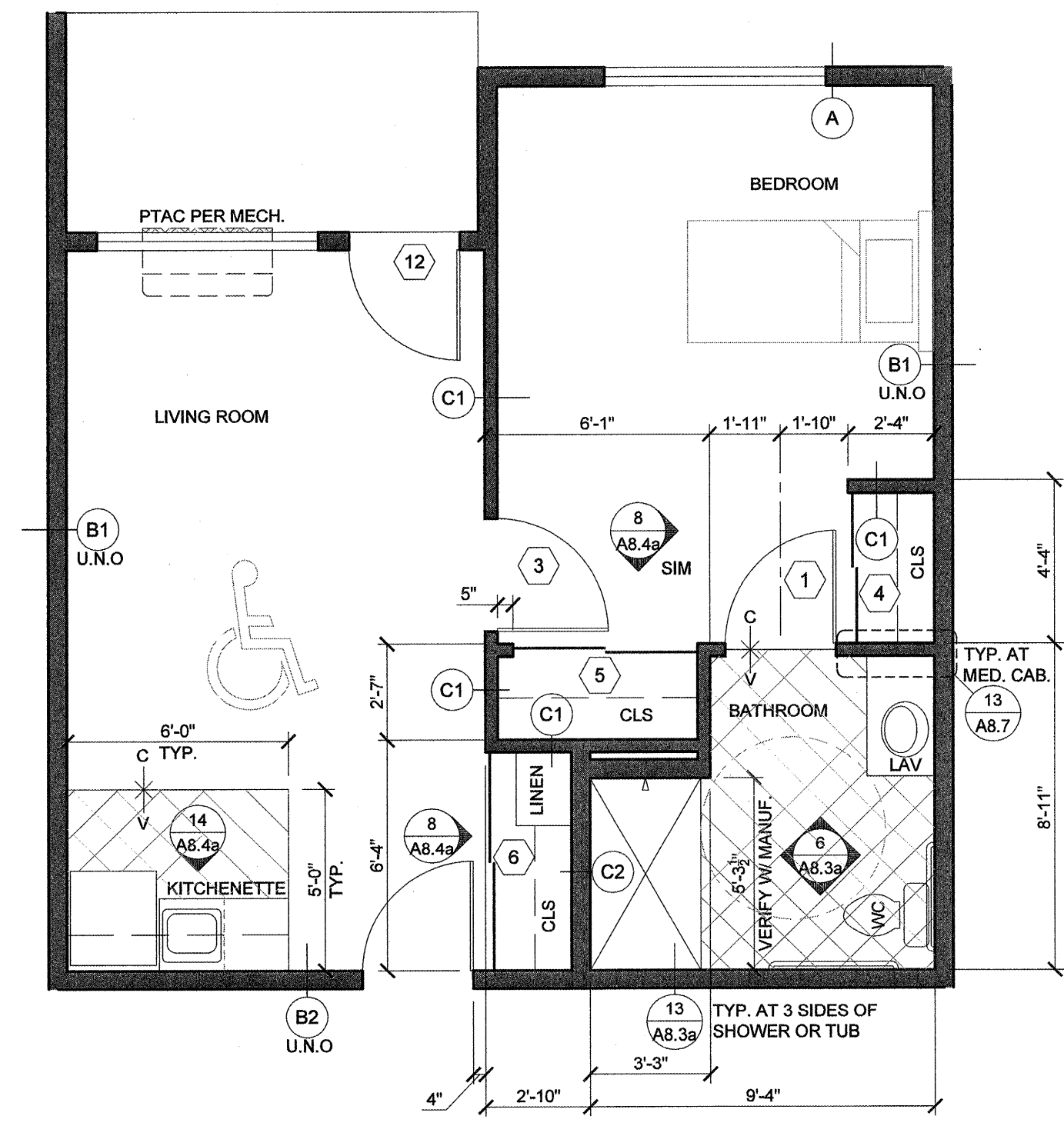
- REFER TO 2/A8.3a FOR TYPICAL SUITE BATH LAYOUT.
  - FRAME AND WIRE FOR FUTURE PTAC RECEPTACLE ON RIGHT SIDE OF BASEBOARD LOCATION. TO REPLACE BASEBOARD IN "C" UNIT SPARE BEDROOMS.
  - REFER TO PLUMBING DETAILS & GENERAL NOTES / SPECIFICATIONS ON SHEET M2.2 FOR FIRE BARRIER PENETRATION PROTECTION.
  - REFER TO PLUMBING DETAILS ON SHEETS M2.1 & M2.2.
  - PROVIDE DRYWALL EXPANSION JOINTS AT CORRIDOR FACE OF ALL COMMON DOORS AND INTERIOR DOOR JAMBS AT TOP FLOOR.
- DOOR DESIGNATION SEE A8.2a  
 INTERIOR ELEV. SEE A8.3a, A8.3b & A8.4 SHEETS  
 DESIGNATES WALL TYPES SHOWN ON COVER SHEET & A7.1a AND A7.1b

NOTE: REFER TO A3 SHEETS FOR WINDOW IDENTIFICATION.

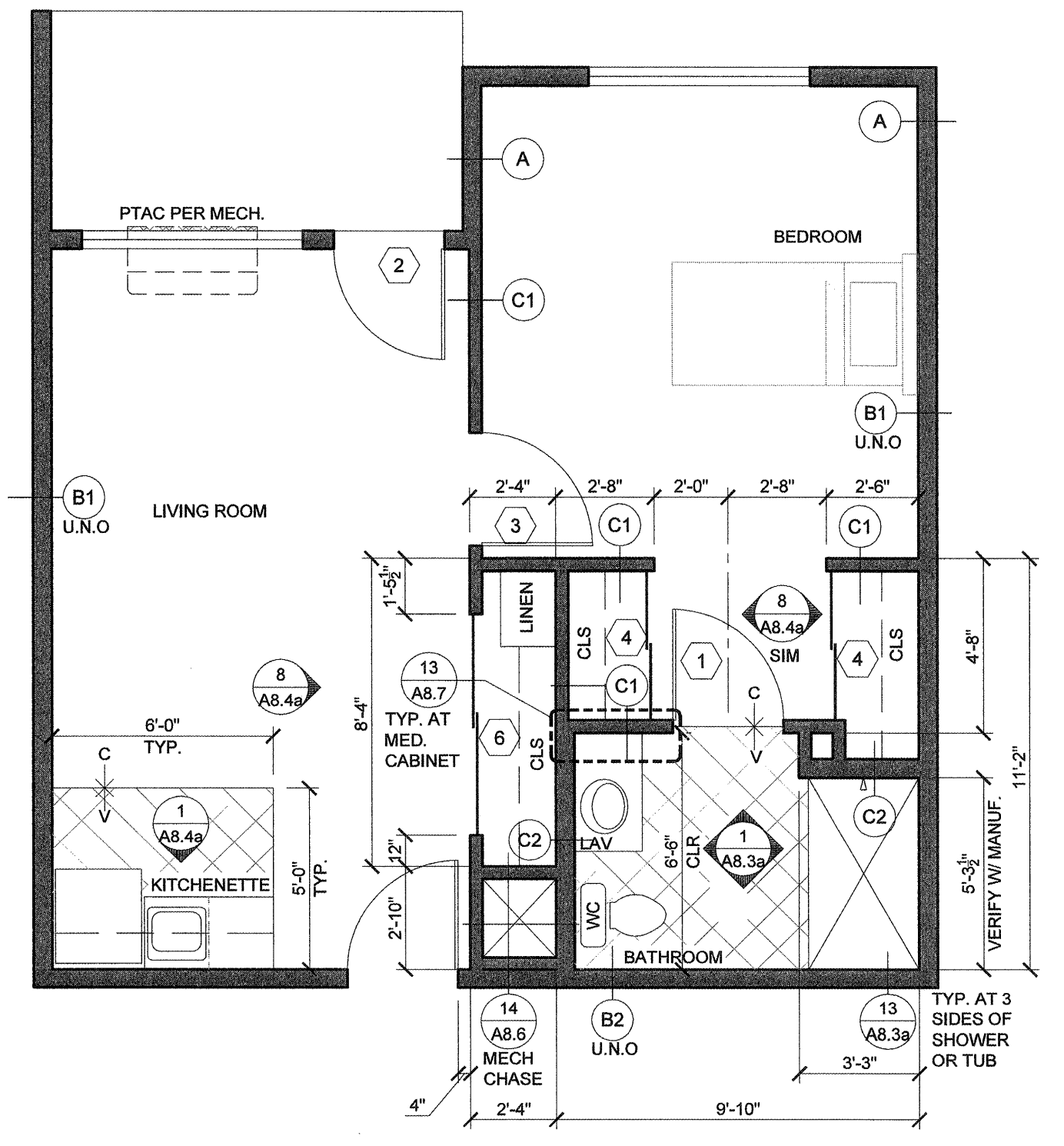
WALL TYPE "B" AT ALL STORAGE AND LAUNDRY ROOMS

NOTE: SEE E5 SHEETS FOR ELECTRICAL LAYOUTS AND M3 SHEET FOR MECH. LAYOUTS OF SUITES

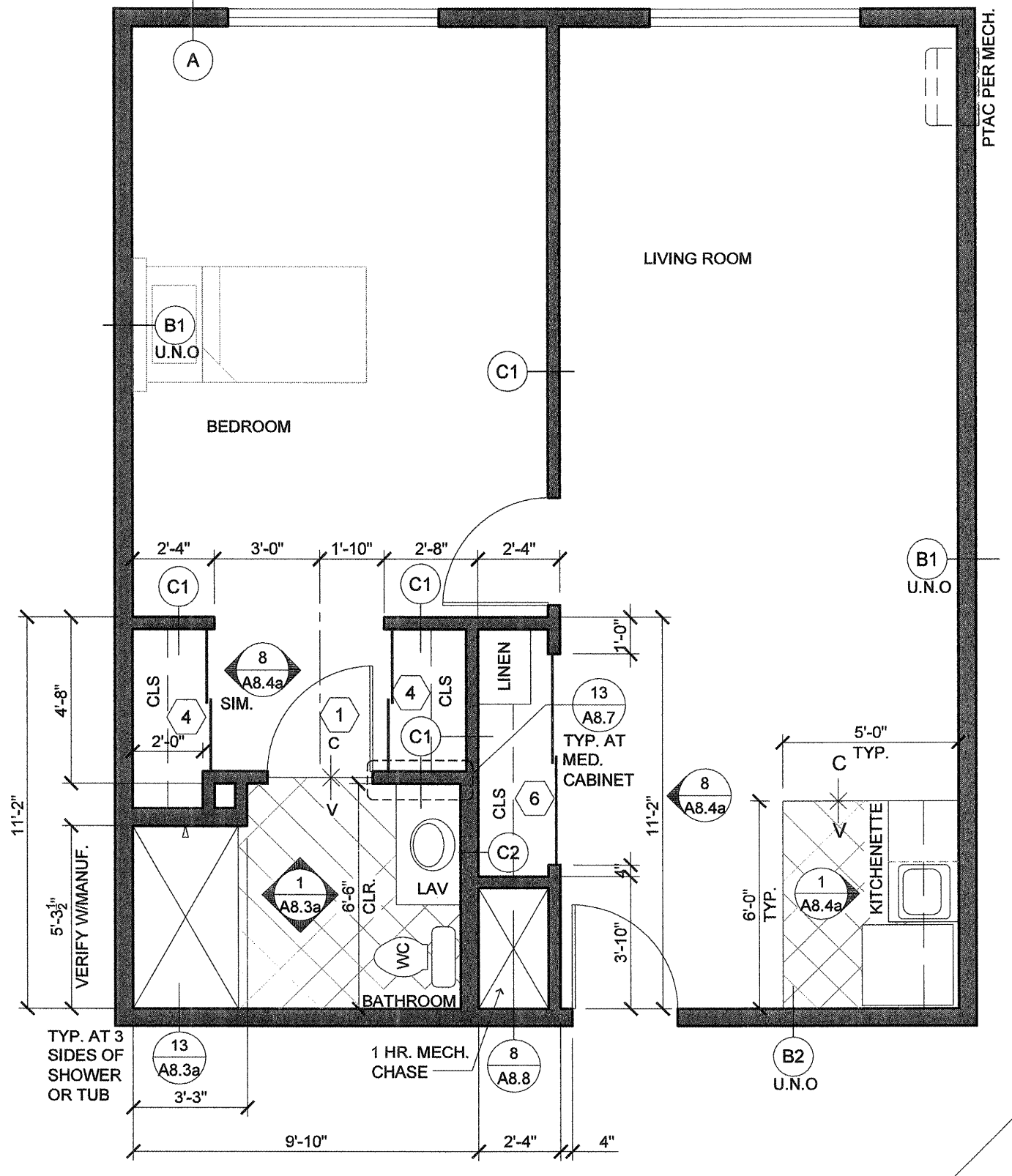
ALL UNITS OTHER THAN THOSE IDENTIFIED AS WHEELCHAIR ACCESSIBLE ARE TO BE ADAPTABLE PER FAIR HOUSING ACT/ADA WITH SHOWER ACCESSIBLE CONVERTIBLE SUITES



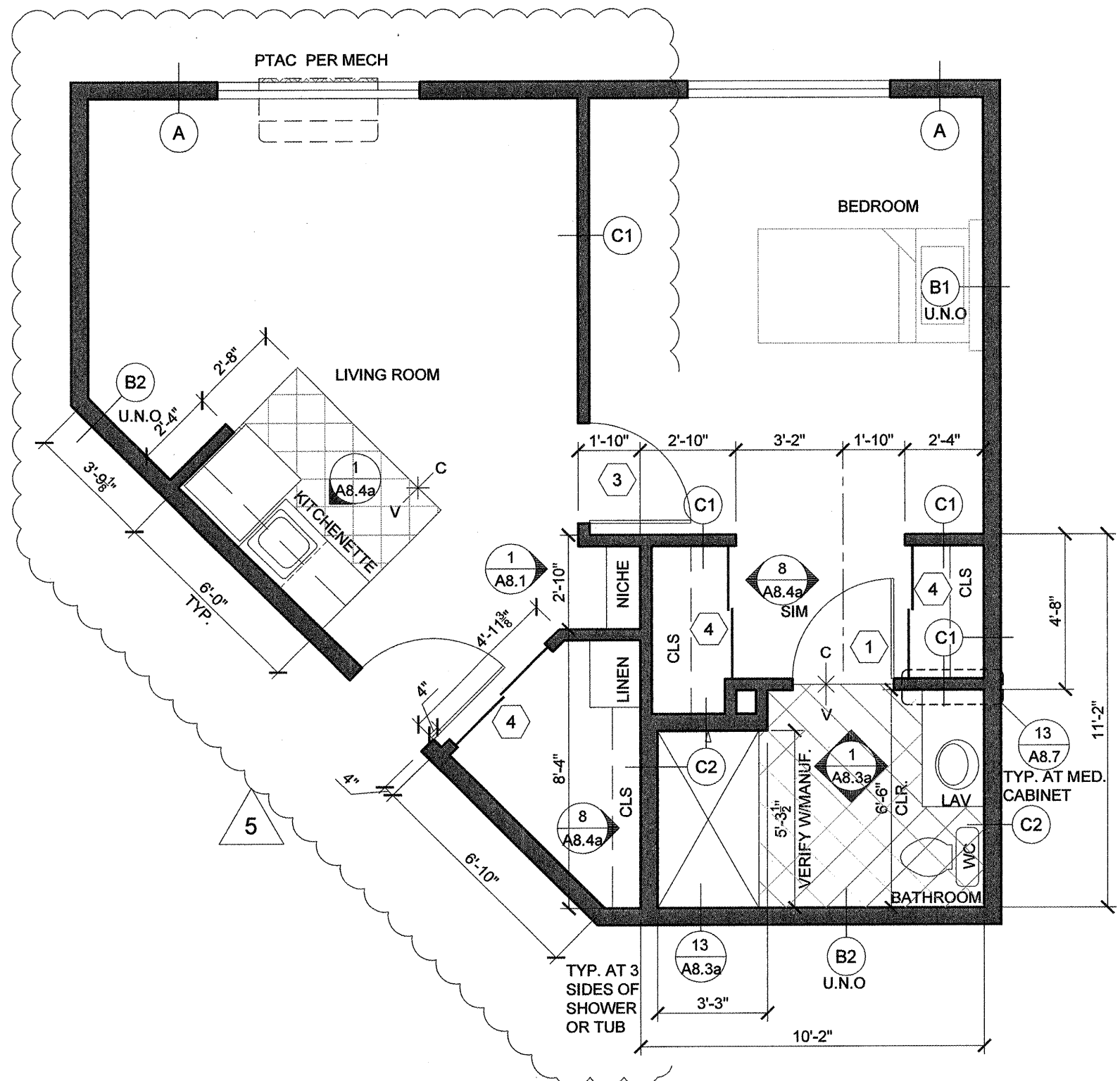
**B24**  
 SCALE: 1/4"=1'-0"



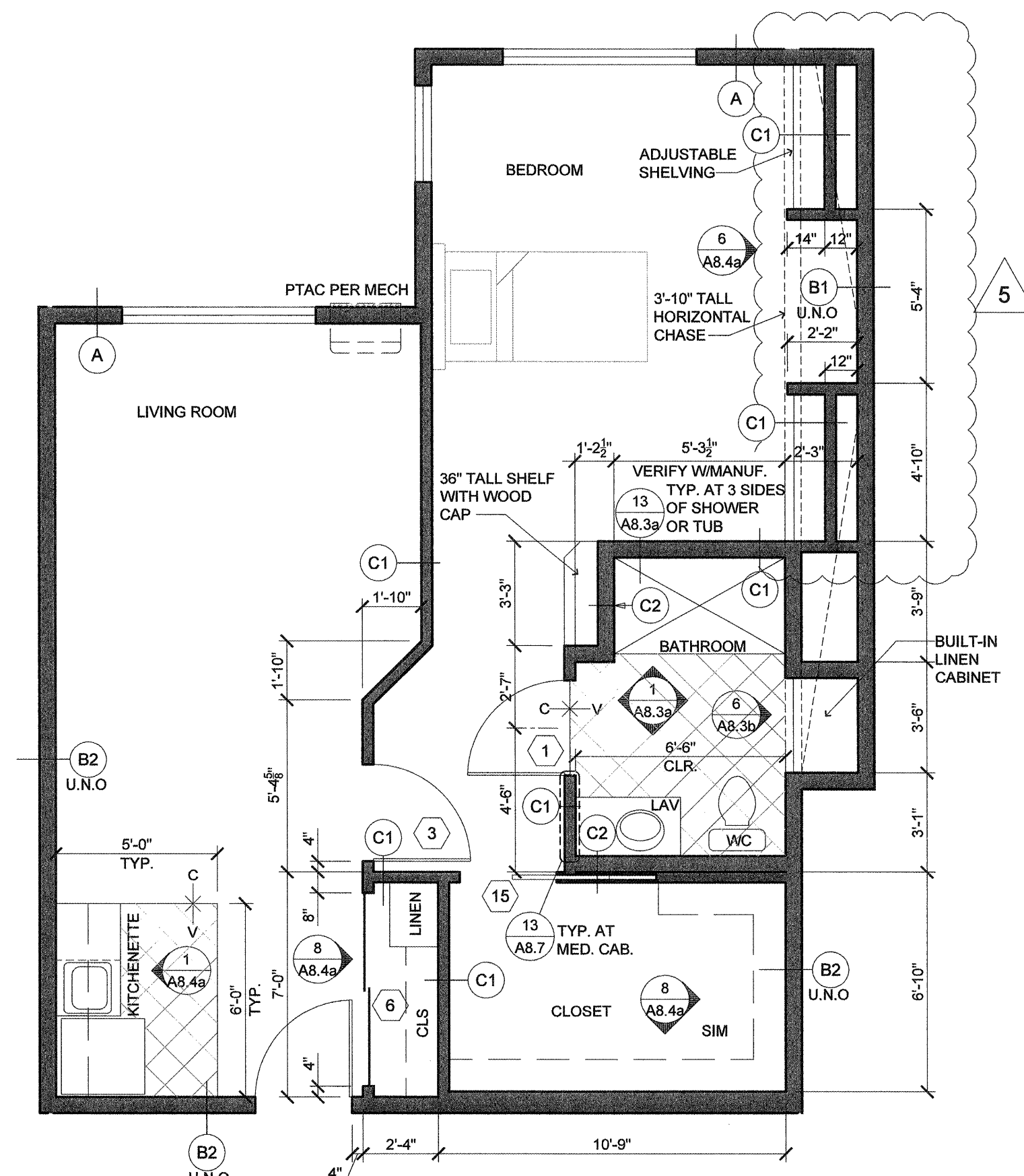
**B25**  
 SCALE: 1/4"=1'-0"



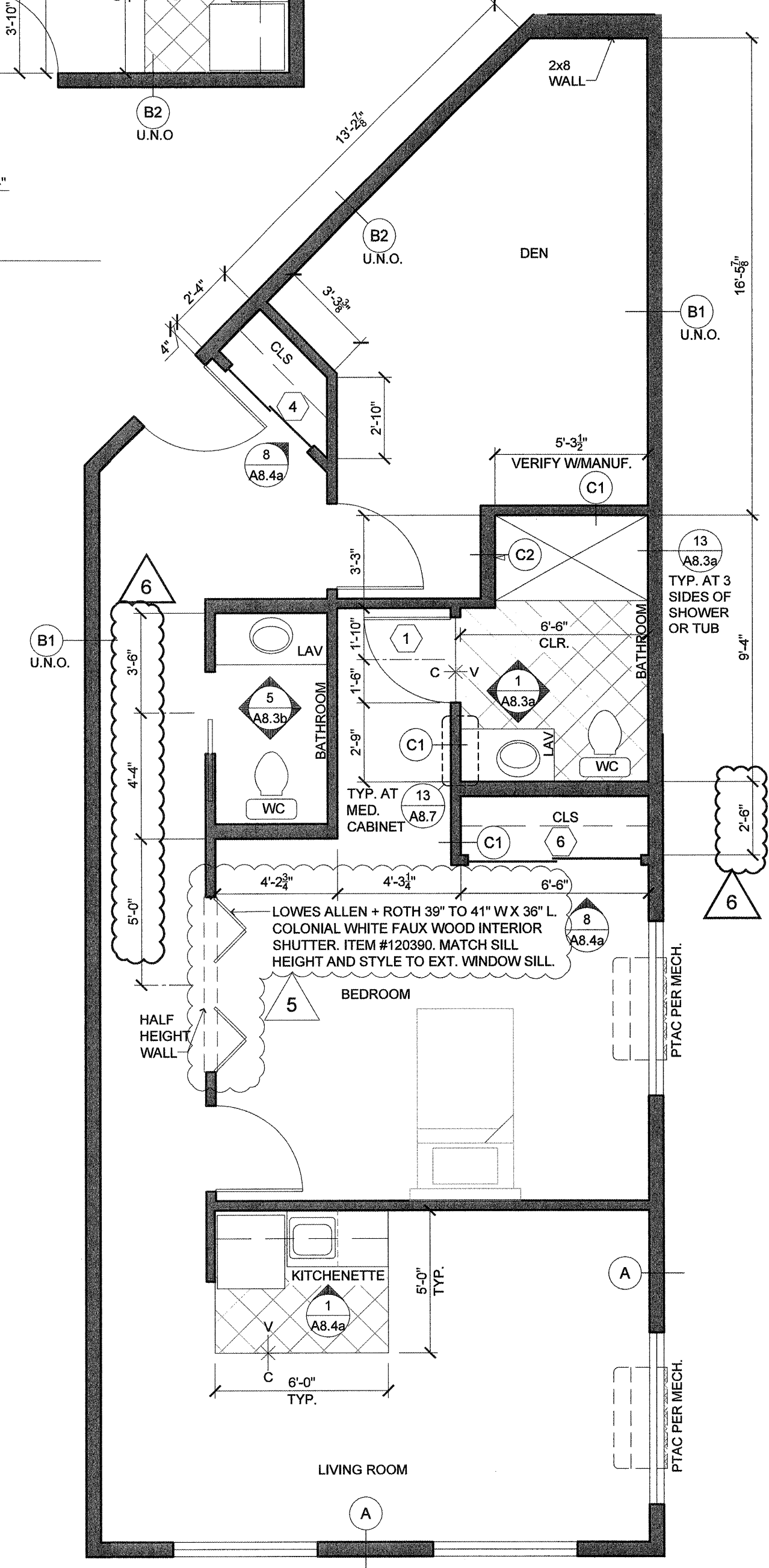
**B26**  
 SCALE: 1/4"=1'-0"



**B27**  
 SCALE: 1/4"=1'-0"



**B28**  
 SCALE: 1/4"=1'-0"



**BD1**  
 SCALE: 1/4"=1'-0"

**SUITE PLANS**  
 SCALE: 1/4"=1'-0"

11/15/2017 10:48:11 AM Job: 1845472017-640 AM Job Path: I:\37\hambroome\pdx\res\0422 suite plans\A5.9