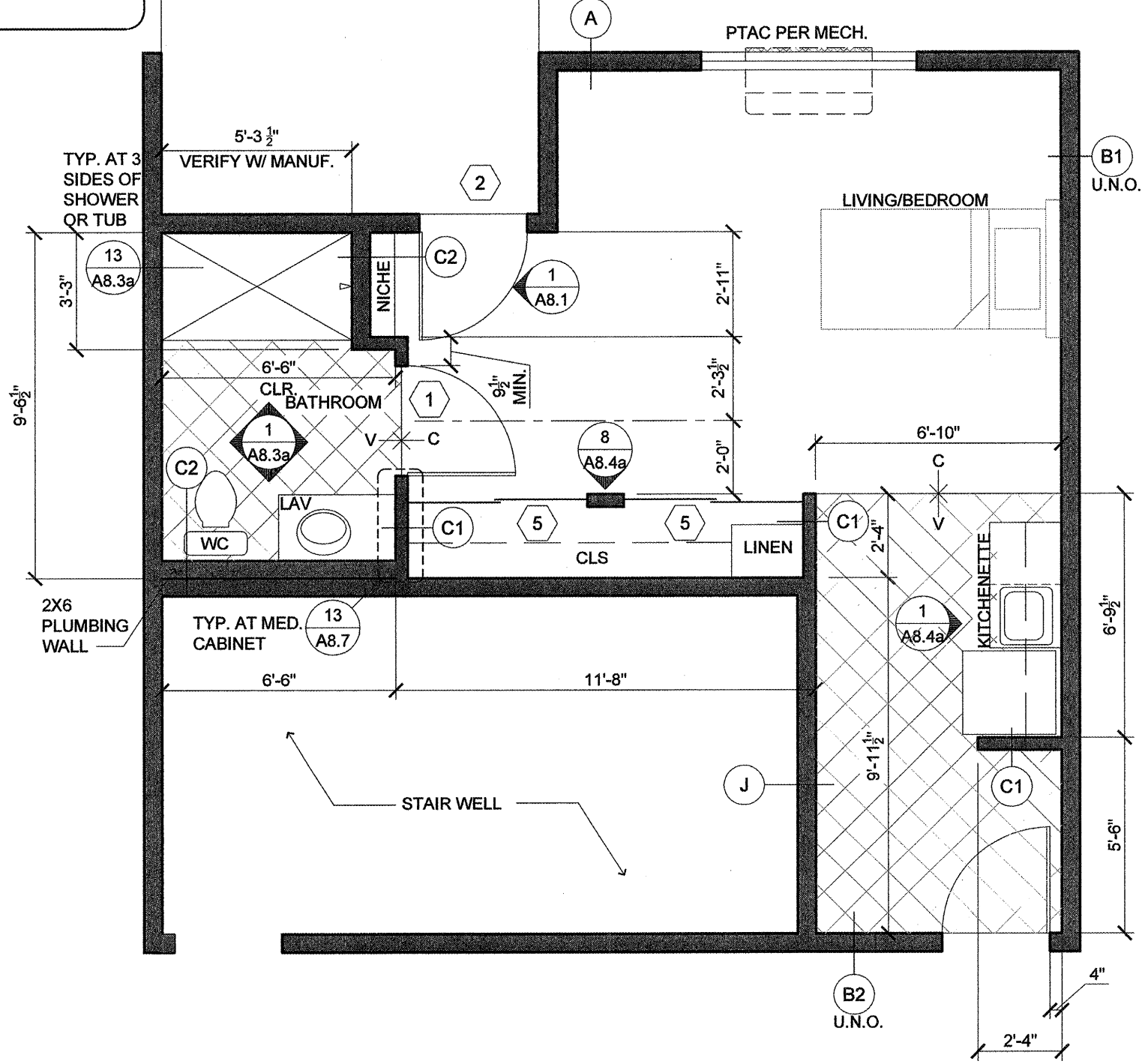
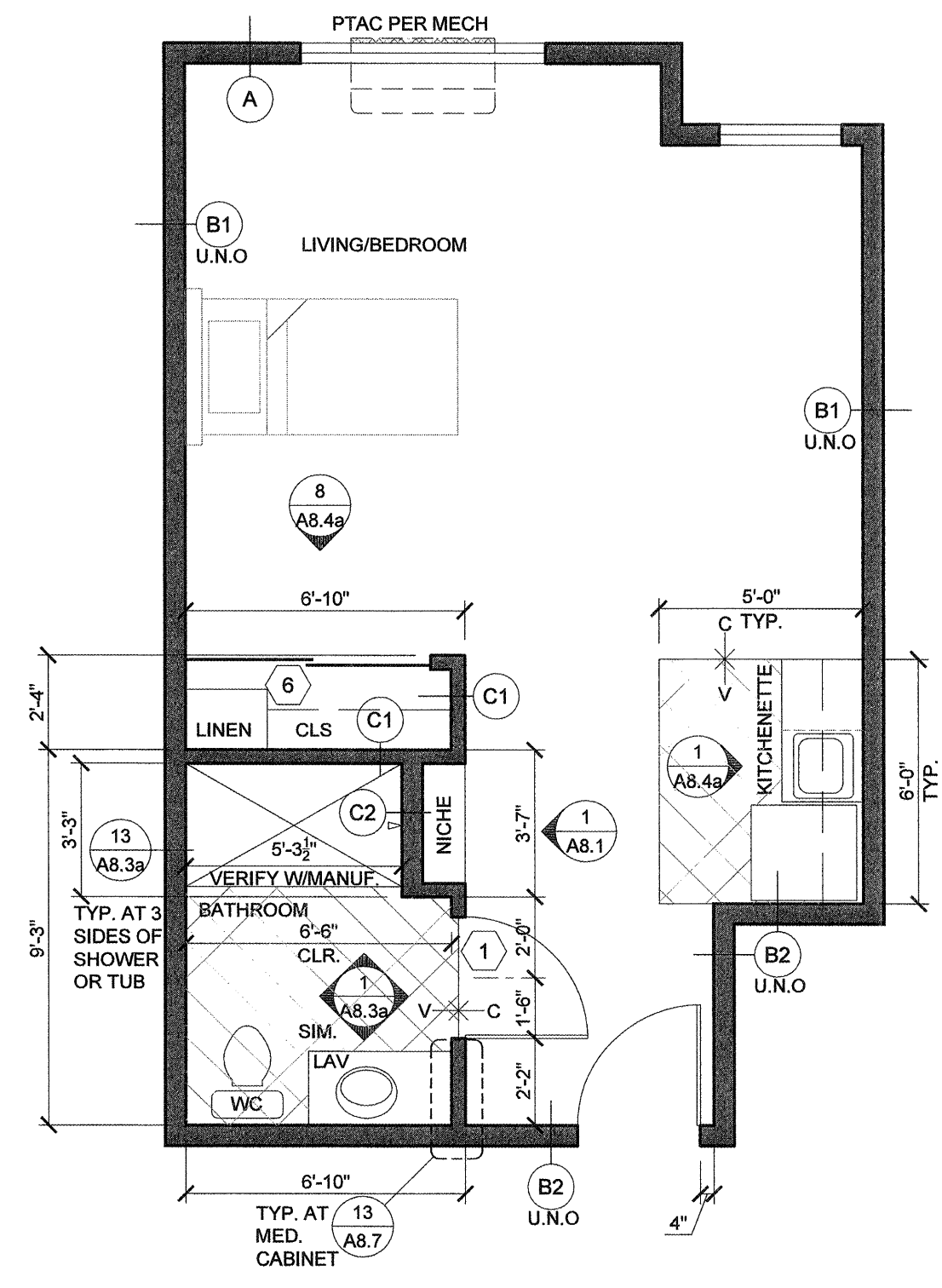


DELETE DOOR #2 AT PATIO. Q1 LIGHT PATIO LIGHT FIXTURE AND LIGHT SWITCH AT TOP FLOOR ONLY.



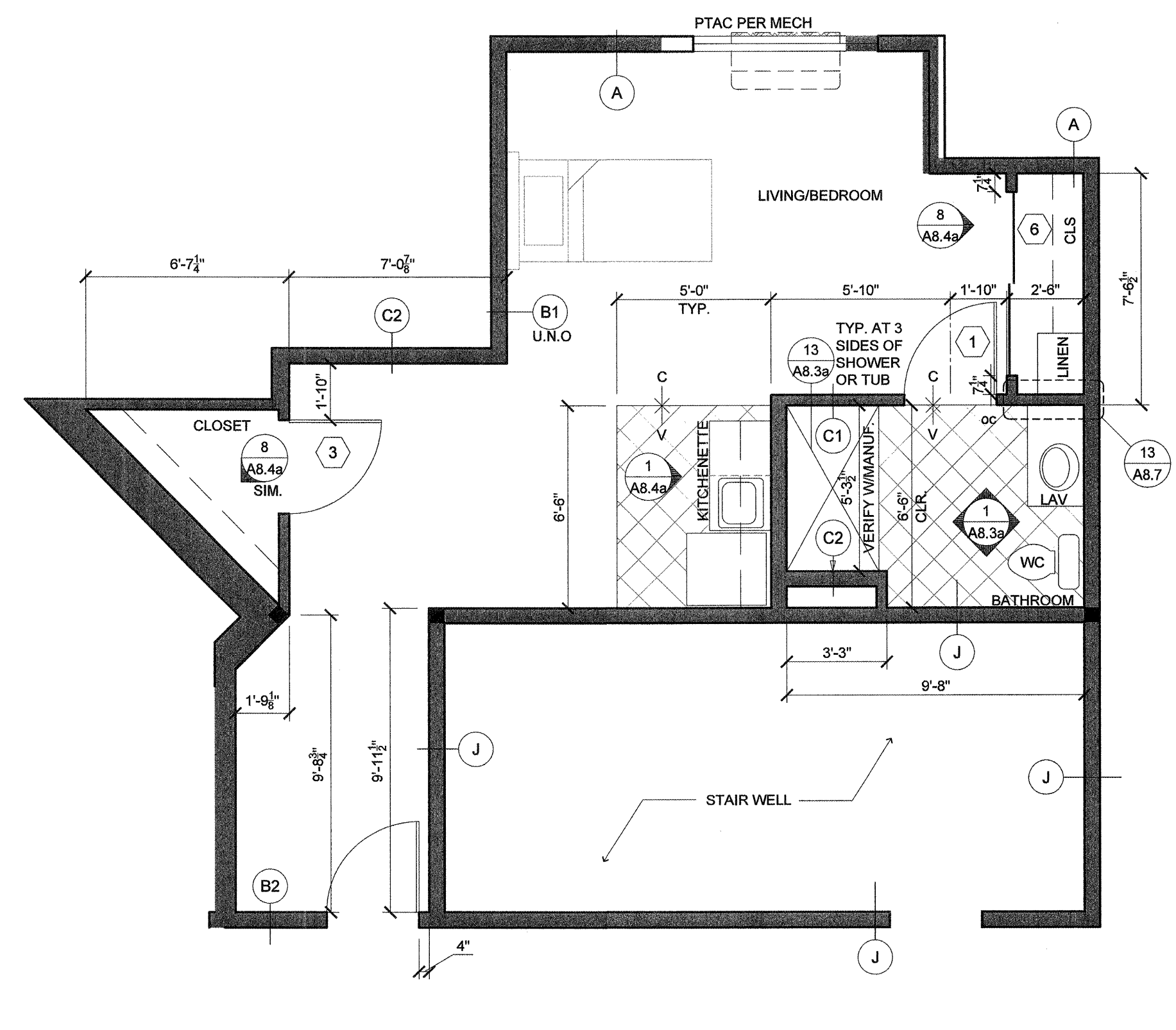
**A13**

SCALE: 1/4"=1'-0"



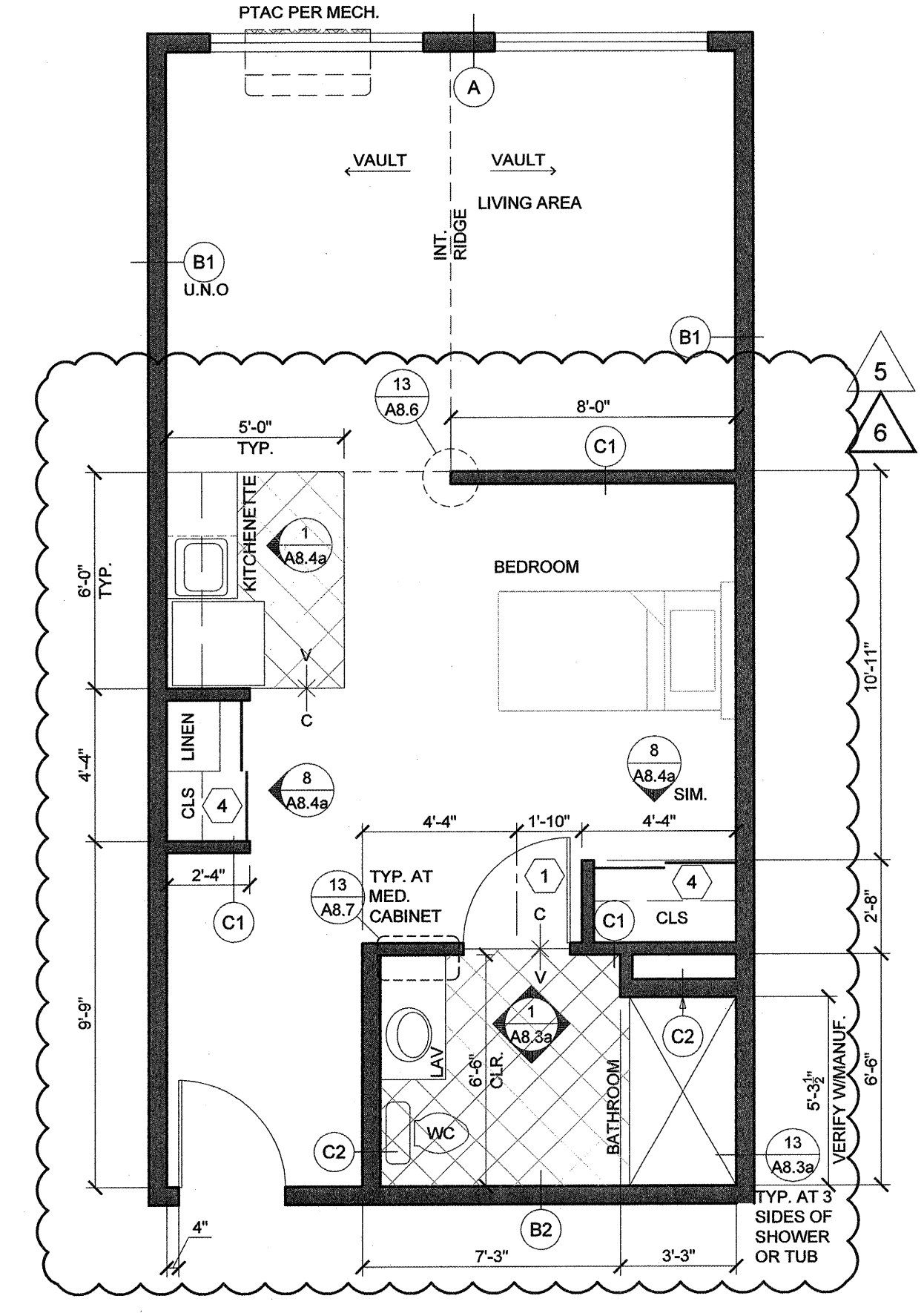
**A14**

SCALE: 1/4"=1'-0"



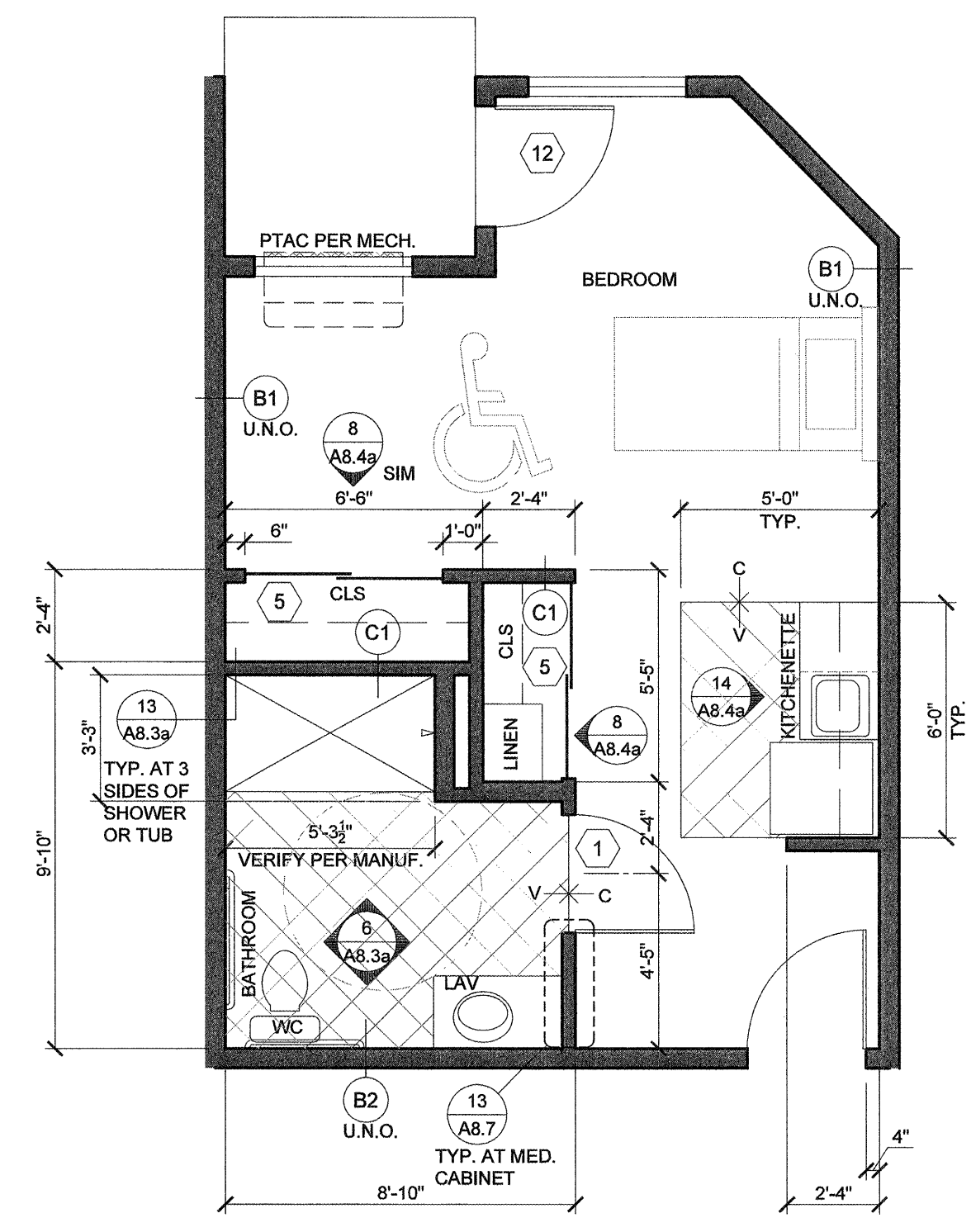
**A15**

SCALE: 1/4"=1'-0"



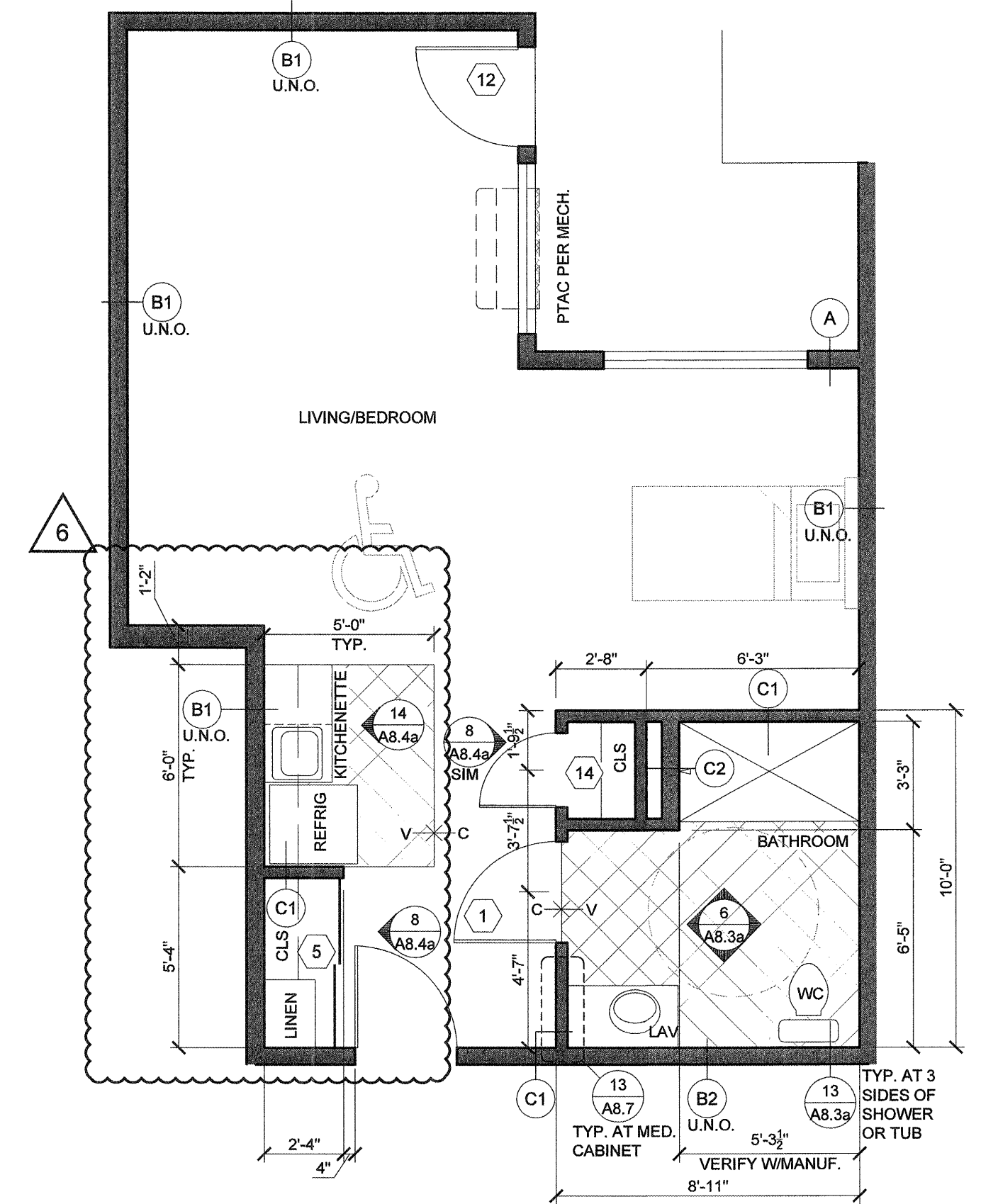
**A16**

SCALE: 1/4"=1'-0"



**A17**

SCALE: 1/4"=1'-0"



**A18**

SCALE: 1/4"=1'-0"

**GENERAL NOTES:**

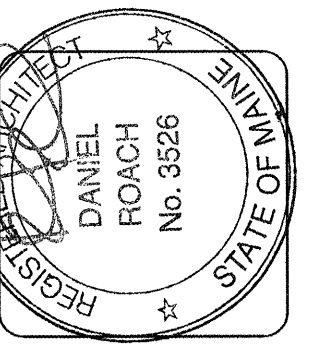
1. REFER TO 2/A8.3a FOR TYPICAL SUITE BATH LAYOUT.
  2. FRAME AND WIRE FOR FUTURE PTAC RECEPTACLE ON RIGHT SIDE OF BASEBOARD LOCATION. TO REPLACE BASEBOARD IN "C" UNIT SPARE BEDROOMS.
  3. REFER TO PLUMBING DETAILS & GENERAL NOTES / SPECIFICATIONS ON SHEET M2.2 FOR FIRE BARRIER PENETRATION PROTECTION.
  4. REFER TO PLUMBING DETAILS ON SHEETS M2.1 & M2.2.
  5. PROVIDE DRYWALL EXPANSION JOINTS AT CORRIDOR FACE OF ALL COMMON DOORS AND INTERIOR DOOR JAMBS AT TOP FLOOR.
- DOOR DESIGNATION SEE A8.2a  
 ○ INTERIOR ELEV. SEE A8.3a, A8.3b & A8.4 SHEETS  
 ○ B DESIGNATES WALL TYPES SHOWN ON COVER SHEET & A7.1a AND A7.1b

NOTE: REFER TO A3 SHEETS FOR WINDOW IDENTIFICATION.

WALL TYPE "B" AT ALL STORAGE AND LAUNDRY ROOMS

NOTE: SEE E5 SHEETS FOR ELECTRICAL LAYOUTS AND M3 SHEET FOR MECH. LAYOUTS OF SUITES

ALL UNITS OTHER THAN THOSE IDENTIFIED AS WHEELCHAIR ACCESSIBLE ARE TO BE ADAPTABLE PER FAIR HOUSING ACT/ADA WITH SHOWER ACCESSIBLE CONVERTIBLE SUITES



**lenity architecture**  
 3150 Kettle Court SE, Salem, Oregon 97301  
 P: 503.399.0550 F: 503.399.0555 W: lenityarchitecture.com

**COLSON AND COLSON**  
 GENERAL CONTRACTOR, INC.  
 2260 McCLCHRIST STREET SE, SUITE 200  
 SALEM, OREGON, 97302  
 PHONE (503) 586-7401

**PORTLAND RESIDENCE**  
 802 OCEAN AVE. PORTLAND, MAINE 04103

**SUITE PLANS**

DATE: 8/28/2015

REVISED DATE:

SHEET

A5.4

**SUITE PLANS**

SCALE: 1/4"=1'-0"

5/7/18/2016 3/13/2017

B:\A520114\_401\PI\p01.dwg pld4/7/2015 3:52 AM pld4/7/2015 3:52 AM pld4/7/2015 3:52 AM