

**lenity architecture**  
 3150 Kettle Court SE, Salem, Oregon 97301  
 P: 503.399.0565 W: lenityarchitecture.com

**COLSON AND COLSON**  
 GENERAL CONTRACTOR, INC.  
 2260 MCGILCHRIST STREET SE, SUITE 200  
 SALEM, OREGON, 97302  
 PHONE (503) 586-7401

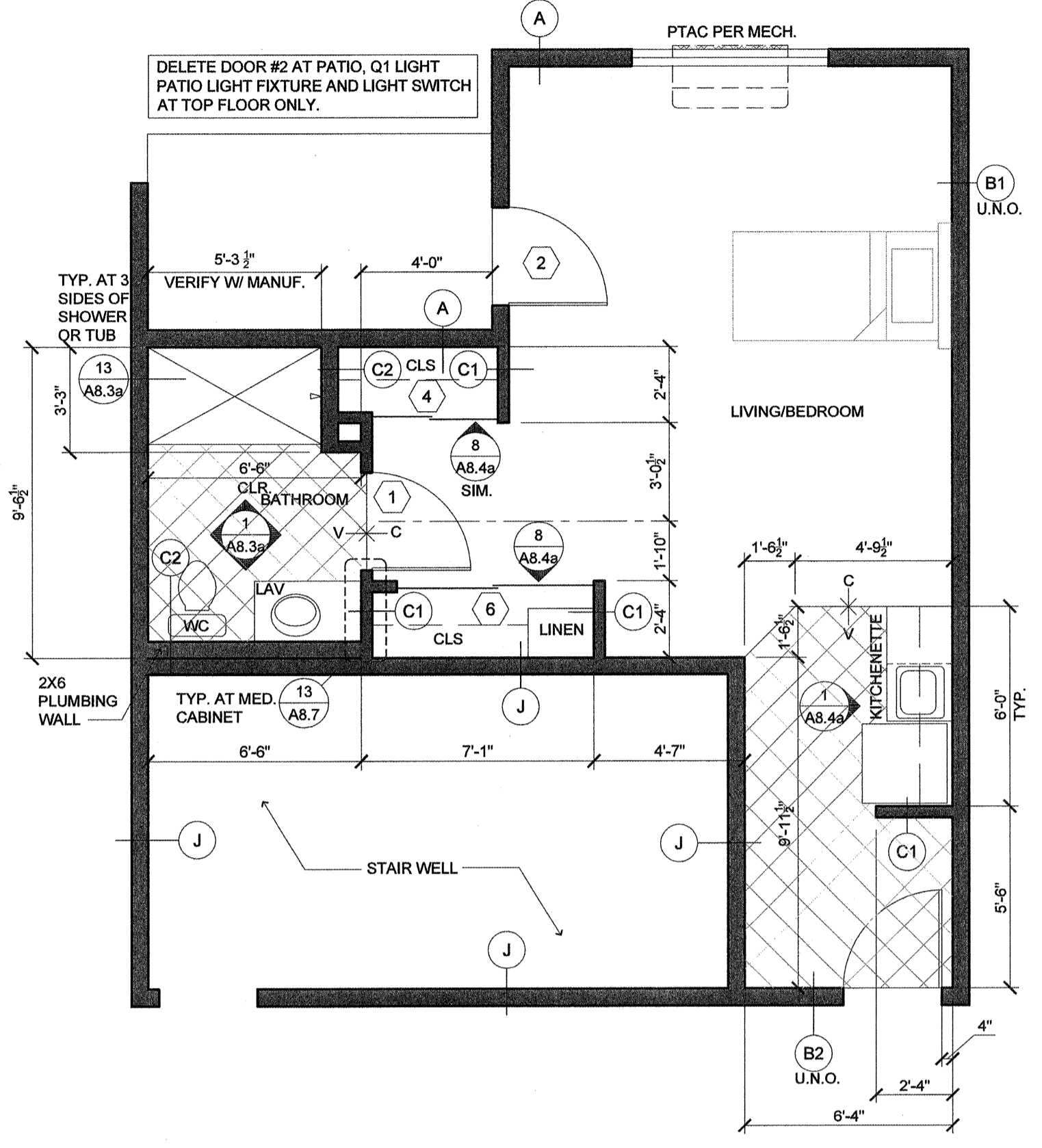
**PORTLAND RETIREMENT RESIDENCE**  
 802 OCEAN AVE. PORTLAND, MAINE 04103

**SUITE PLANS**

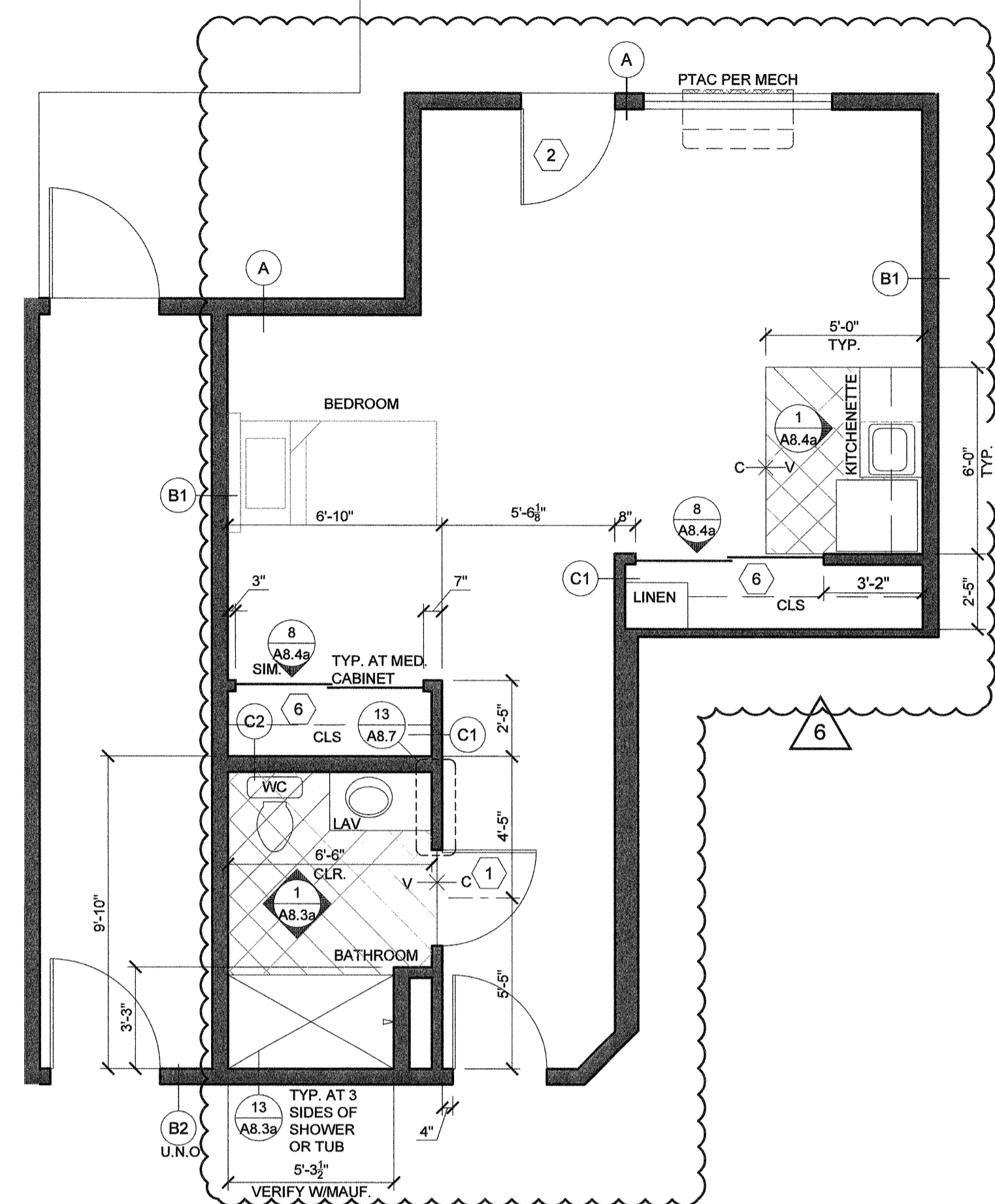
DATE: 8/28/2015  
 REVISED DATE:  
 SHEET: A5.3

**GENERAL NOTES:**

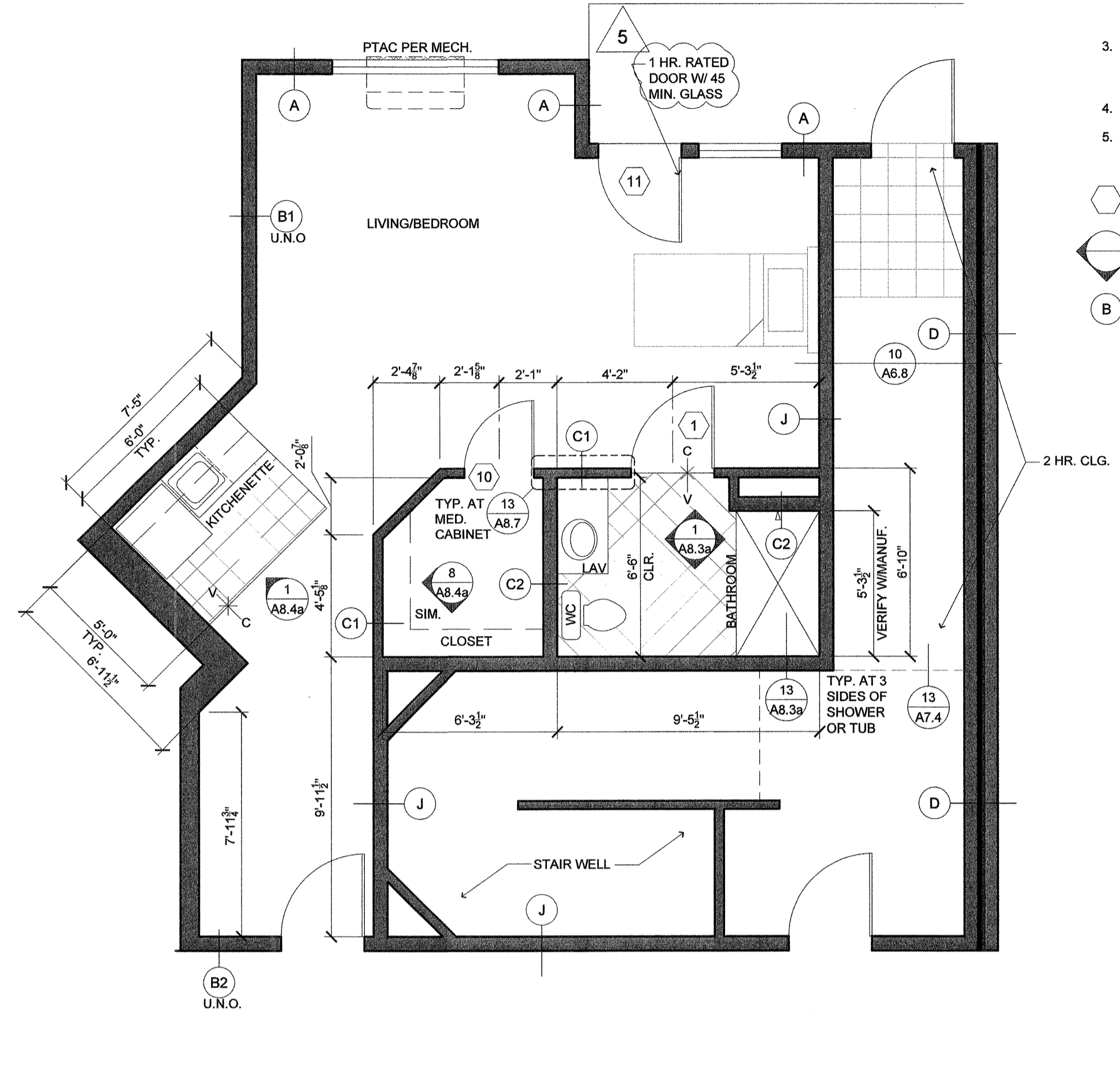
- REFER TO 2/A8.3a FOR TYPICAL SUITE BATH LAYOUT.
  - FRAME AND WIRE FOR FUTURE PTAC RECEPTACLE ON RIGHT SIDE OF BASEBOARD LOCATION. TO REPLACE BASEBOARD IN "C" UNIT SPARE BEDROOMS.
  - REFER TO PLUMBING DETAILS & GENERAL NOTES / SPECIFICATIONS ON SHEET M2.1 & M2.2.
  - PROVIDE DRYWALL EXPANSION JOINTS AT CORRIDOR FACE OF ALL COMMON DOORS AND INTERIOR DOOR JAMBS AT TOP FLOOR.
- DOOR DESIGNATION SEE A8.2a  
 INTERIOR ELEV. SEE A8.3a, A8.3b & A8.4 SHEETS  
 DESIGNATES WALL TYPES SHOWN ON COVER SHEET & A7.1a AND A7.1b



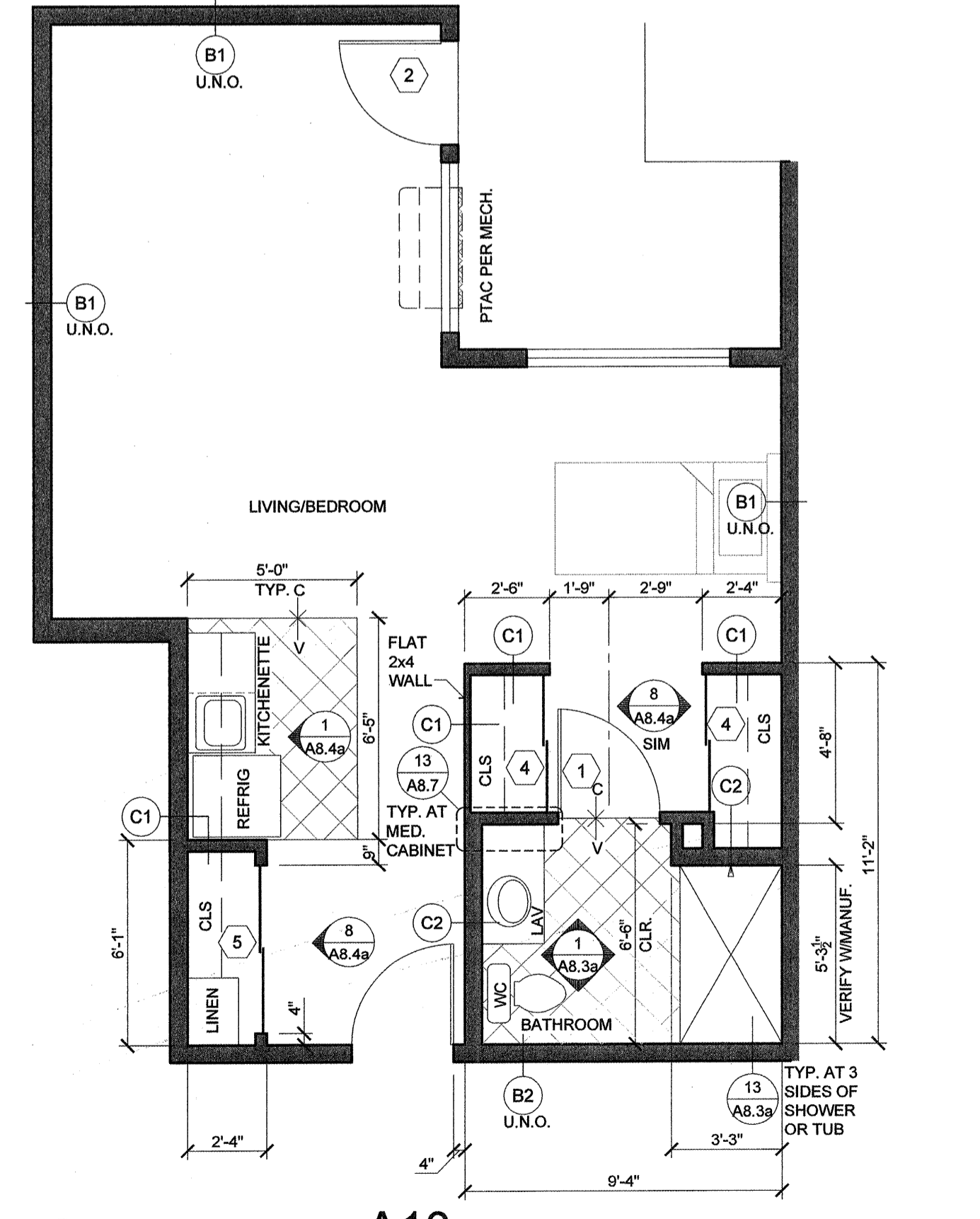
**1** **A7**  
 SCALE: 1/4"=1'-0"



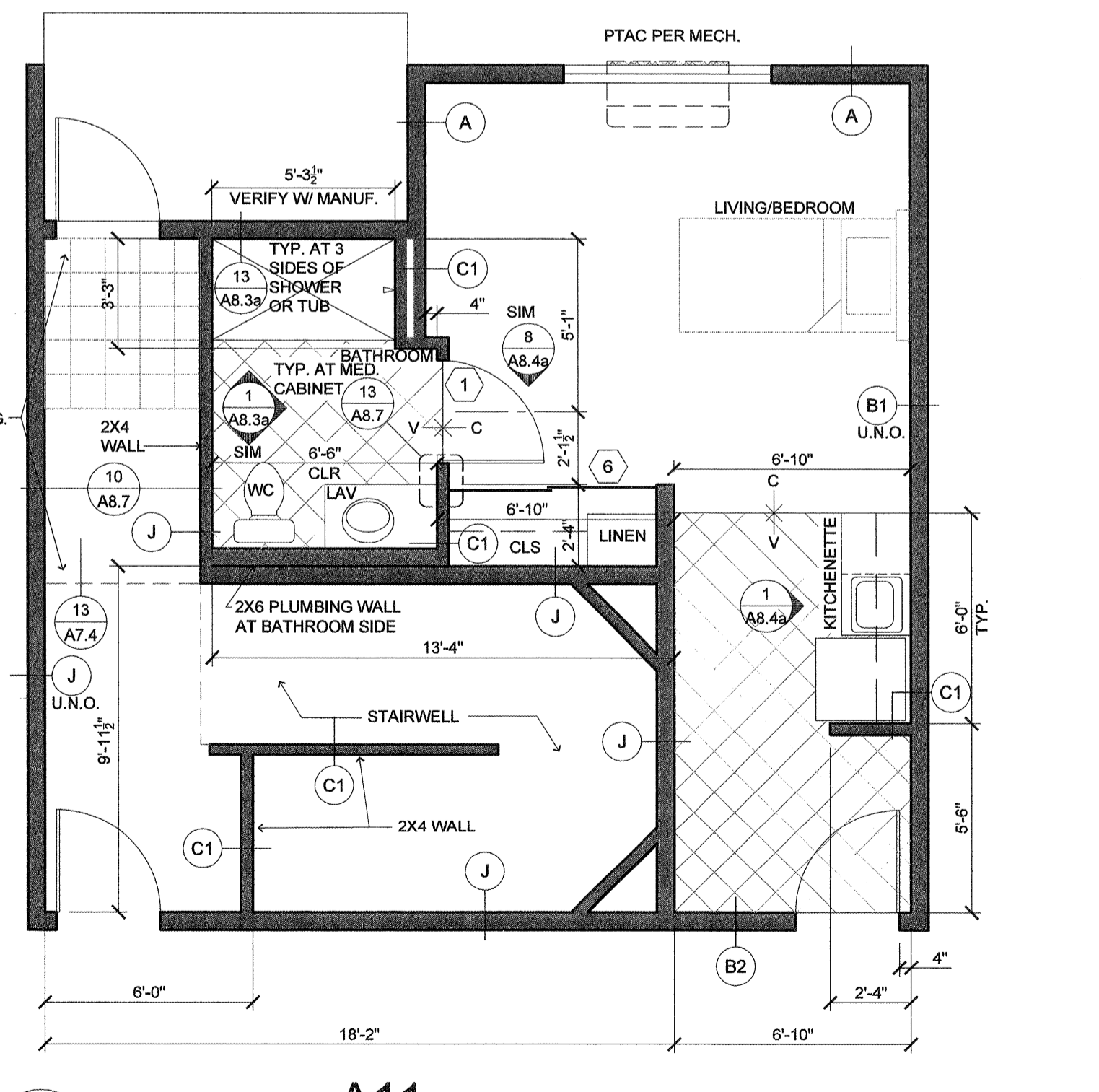
**2** **A8**  
 SCALE: 1/4"=1'-0"



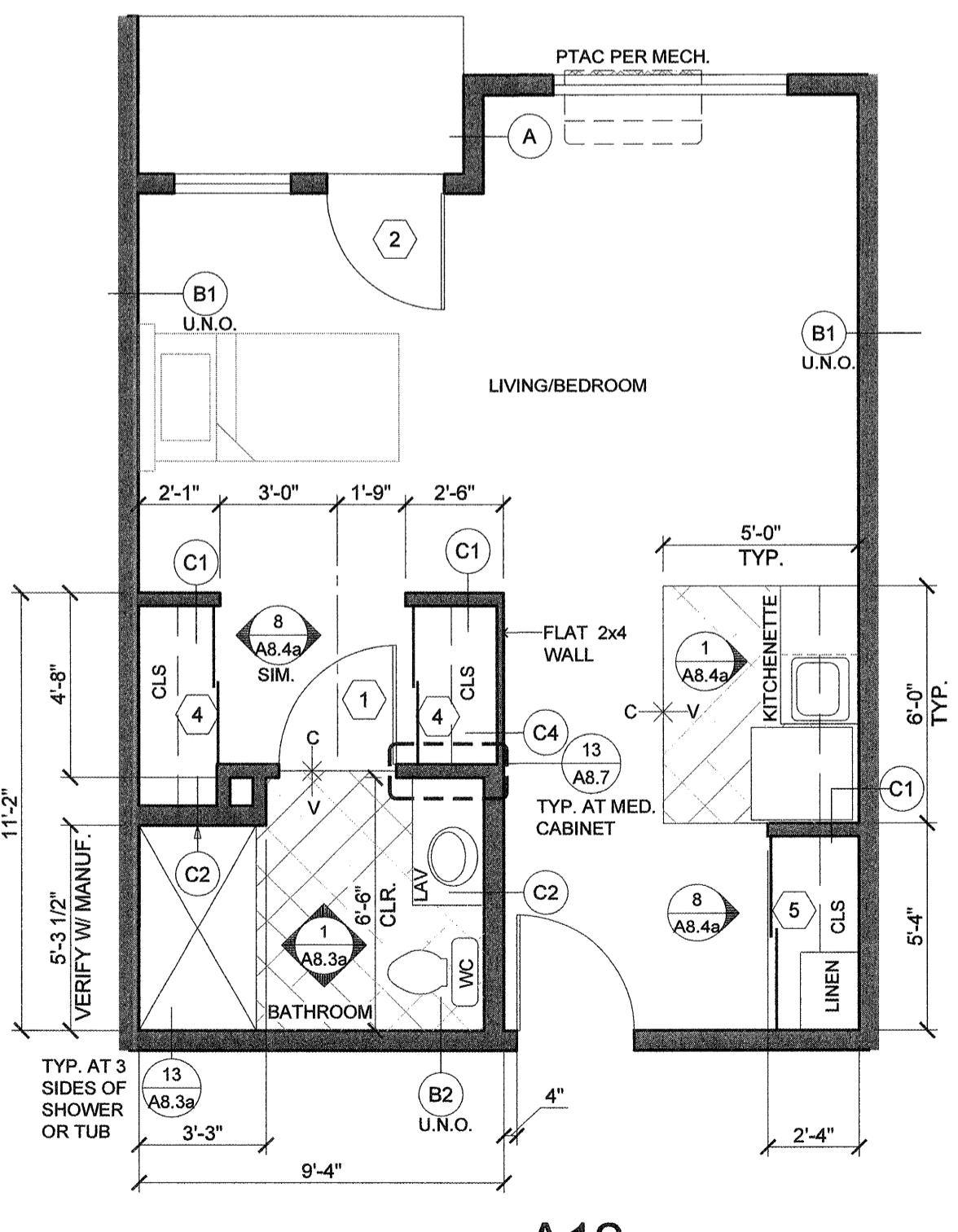
**3** **A9**  
 SCALE: 1/4"=1'-0"



**4** **A10**  
 SCALE: 1/4"=1'-0"



**5** **A11**  
 SCALE: 1/4"=1'-0"



**6** **A12**  
 SCALE: 1/4"=1'-0"

**NOTE: REFER TO A3 SHEETS FOR WINDOW IDENTIFICATION.**

**WALL TYPE "B" AT ALL STORAGE AND LAUNDRY ROOMS**

**NOTE: SEE E5 SHEETS FOR ELECTRICAL LAYOUTS AND M3 SHEET FOR MECH. LAYOUTS OF SUITES**

**ALL UNITS OTHER THAN THOSE IDENTIFIED AS WHEELCHAIR ACCESSIBLE ARE TO BE ADAPTABLE PER FAIR HOUSING ACT/ADA WITH SHOWER ACCESSIBLE CONVERTIBLE SUITES**

**SUITE PLANS**  
 SCALE: 1/4"=1'-0"

www.503.2011.4.601 PM (pdf) p44.4/7/2015 12:27 AM (pdf) R:\p\shawson\maine\portland\retire\A5.3 suite plans.dwg A5.3

7/18/2016 16:31/13/2017