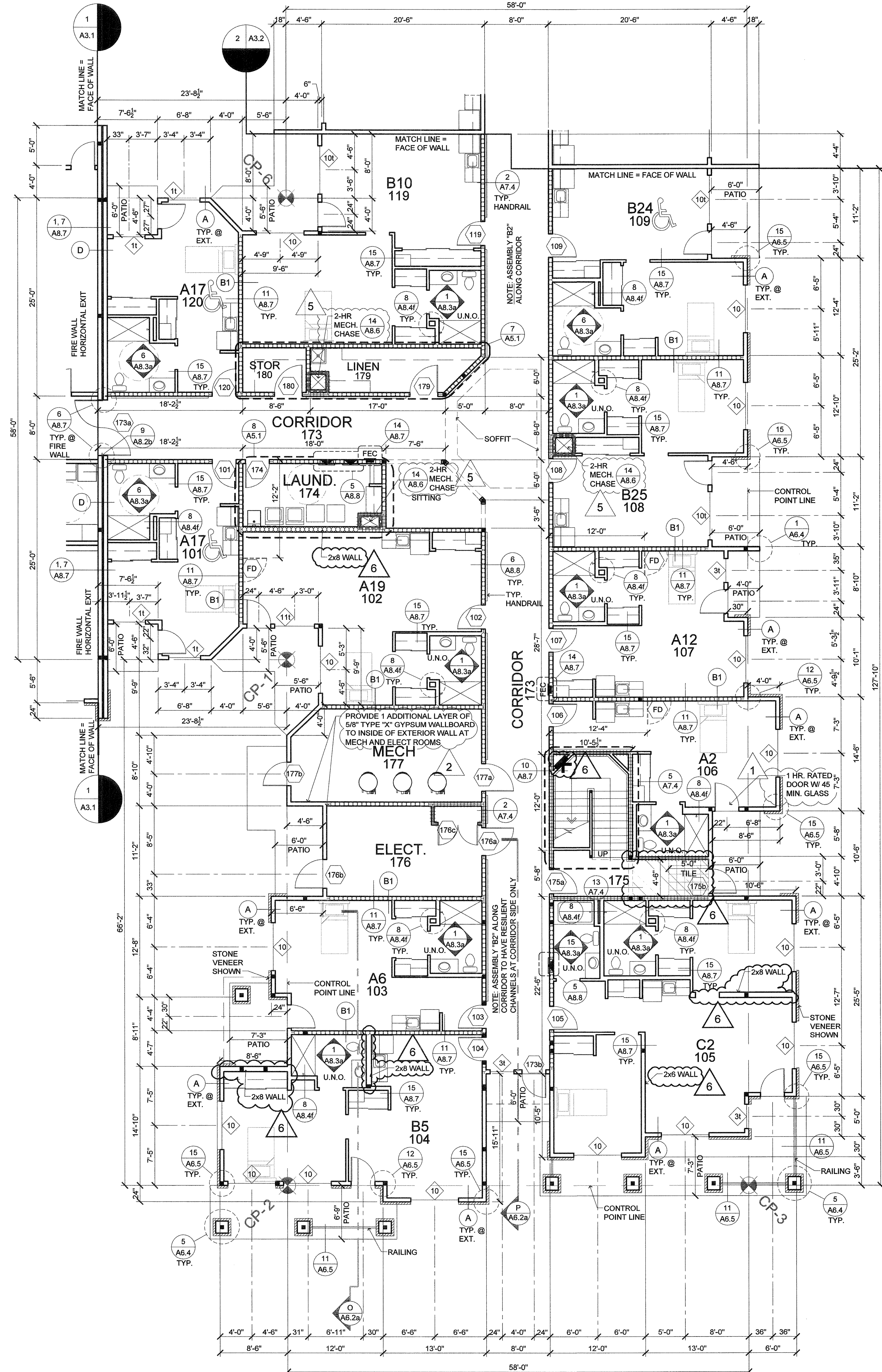


WING 'B'



WING 'B'

- LEGEND**
- ACCESSIBLE SUITE
 - TUB/SHOWER
 - ROLL-IN SHOWER
 - CONTROL POINT
 - DESIGNATES WALL TYPES SHOWN SHEETS A7.1a & A7.1b
 - DOOR DESIGNATION. SEE A8.2a
 - LOCATION OF FRAMING FOR FUTURE DOOR. SEE 10/33.3
 - WINDOW DESIGNATION. SEE A8.0a
1 = WINDOW GLAZING DESIGNATION (TEMPERED)
 - AREA SEPARATION WALL FIRE WALL/HORIZONTAL EXIT SEE SHEET A8.7 FOR DETAILS
 - ONE HOUR PARTITION
 - EPOXY
 - CERAMIC TILE
FEC SEE 14/A8.7
 - STANDPIPE CABINET SEE 3/A8.8
 - CLASS 1 STANDPIPE SEE 10/A8.8
 - ELECTRICAL PANEL SEE DETAIL 5/A8.8
 - FIRE PARTITION WALL. SEE DEFINITION ON EGRESS SHEETS

- GENERAL NOTES:**
1. PROVIDE DRYWALL EXPANSION JOINTS AT CORRIDOR FACE OF ALL INTERIOR DOOR JAMBS
 2. INSTALL BACKING AT ALL HOLD OPENS, FUTURE GRAB BARS
 3. REFER TO ROOF PLAN FOR DOWNSPOUT LOCATIONS.
 4. REFER TO 14" AS SHEETS FOR ENLARGED SUITE PLANS.
 5. REFER TO A7.1a AND A7.1b FOR TYPICAL WALL ASSEMBLIES.
 6. ALL EXTERIOR, PARTY, CORRIDOR AND PLUMBING WALLS TO BE 2x6 STUDS AT 16" oc UNLESS OTHERWISE NOTED.
 7. ALL JAMB FRAMING AT HINGE SIDE TO BE 4" U.O.N.
 8. REFER TO SHEETS A7.6, A7.7 AND A8.7, A8.8 FOR FIRE RATED CONSTRUCTION DETAILS AND INFO.
 9. ELEVATOR EQUIPMENT ROOMS SHALL BE 2-HR RATED CONSTRUCTION
 10. SEE DETAIL 12/A8.2b FOR MINIMUM ACCESSIBLE FLOOR CLEARANCE AT DOORS.

NOTE: FUTURE DOOR DIMENSIONS ADDED TO A3 SHEETS

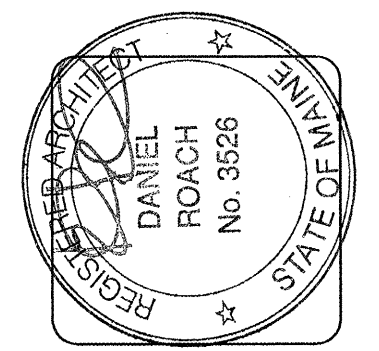
NOTE: DIMENSIONS OF SOFFITS ON 1ST FLOOR ARE TAKEN FROM FINISH FLOOR. DIMENSIONS OF SOFFITS ON 2ND FLOOR AND ABOVE ARE TAKEN FROM TOP OF PLYWOOD.

NOTE: ALL SLOPED CEILINGS TO BE SKIM COATED.
• SEE SHEET A2.1 FOR CONTROL POINT DIMENSIONS
• SEE DETAIL 1 AND 3 ON S2.3 FOR ALLOWABLE BORING/NOTCHING OF MEMBERS.

NOTE: FIRE EXTINGUISHERS SHALL BE INSTALLED IN ACCORDANCE WITH SECTION 908 OF THE 2009 IFC AND NFPA 10 2007 EDITION, IN ACCORDANCE WITH NFPA 10, TABLE 9.2.1. FIRE EXTINGUISHERS PLACED NOT TO EXCEED A MAXIMUM OF 75 FEET OF TRAVEL DISTANCE. ALL EXTINGUISHERS SHALL BE RATED AT A MINIMUM OF 2A:10BC, UNLESS OTHERWISE NOTED. ADDITIONAL FIRE EXTINGUISHERS ARE REQUIRED IN THE FOLLOWING COMMON AREAS:

1. ONE ABC IN THE ELEVATOR EQUIPMENT ROOM. A CLEAN AGENT IS RECOMMENDED, BUT NOT REQUIRED.
2. ONE 2A:10BC IN THE KITCHEN.
3. ONE K CLASS IN THE KITCHEN.

JOINTS BETWEEN GYPSUM BOARDS IN SYSTEMS RATED FOR FIRE, SOUND, OR SHEAR MUST BE CONSTRUCTED WITH THE GYPSUM BOARD EDGES IN MODERATE CONTACT. MODERATE CONTACT MEANS THAT THE EDGES ARE ESSENTIALLY TOUCHING EACH OTHER. IT IS POSSIBLE FOR THE GYPSUM BOARD EDGES TO BE IN MODERATE CONTACT YET NOT TOUCH ALONG THE ENTIRE LENGTH OF THE JOINT. THEREFORE, IN GYPSUM BOARD SYSTEMS RATED FOR FIRE, SOUND, OR SHEAR, SMALL GAPS SPACED SPORADICALLY ALONG THE JOINT ARE ACCEPTABLE AS LONG AS THE BOARD EDGES ARE ESSENTIALLY TOUCHING ONE ANOTHER. GAPS UP TO 1/4" MUST BE FILLED WITH A THROUGH-PENETRATION SEALANT (FIRE CAULK). GAPS OVER 1/4" ARE NOT ACCEPTABLE.



lenity architecture
Kenya Conroy, AIA, Oregon 97301
1550 NE Oregon Street, Suite 200
Portland, Oregon 97232
P: 503.599.7850 F: 503.599.6565
www.lenityarchitecture.com

COLSON AND COLSON
GENERAL CONTRACTOR, INC.
2260 MCGILCHRIST STREET SE, SUITE 200
SALEM, OREGON 97302
PHONE (503) 586-7401

PORTLAND
RETIREMENT RESIDENCE
802 OCEAN AVE., PORTLAND, MAINE 04103

1ST FLOOR
WING 'B' PLAN

DATE: 8/28/2015
REVISED DATE: 9/22/2015, 2/2/2016
SHEET: A3.2

FIRST FLOOR WING 'B' PLAN
SCALE: 1/8"=1'-0"

DATE: 8/28/2015
REVISED DATE: 9/22/2015, 2/2/2016

SHEET: A3.2