

lenity
architecture

100 Kennebec Street, Suite 200
Portland, ME 04101
Tel: 603.589.6655
www.lenityarchitecture.com

COLSON AND COLSON
GENERAL CONTRACTOR, INC.
2280 MCGILCHRIST STREET SE, SUITE 200
SALEM, OREGON, 97302
PHONE (503) 586-7401

PORTLAND
RETIREMENT RESIDENCE
802 OCEAN AVE. PORTLAND, MAINE 04103

FIRST FLOOR
REFERENCE
PLAN

DATE
8/28/2015

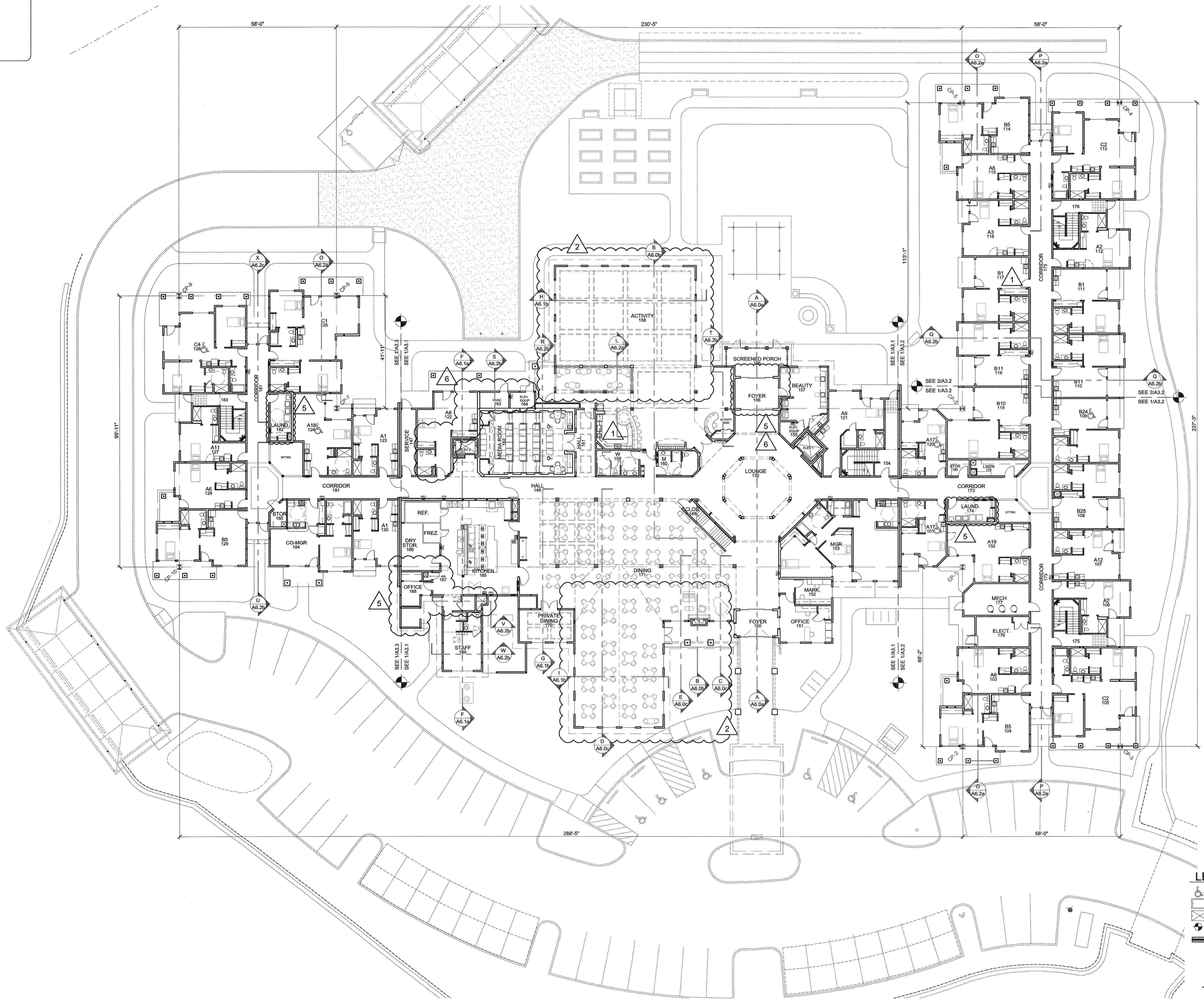
REVISED DATE
2/2/2016

SHEET
A2.1

DATE
7/18/2016

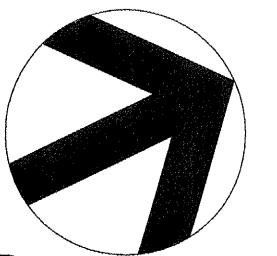
DATE
3/13/2017

www.lenity.com
10/14/2015 10:44 AM
lenity - plan_01.dwg
8/28/2015 10:44 AM
lenity - plan_01.dwg
1:5. reference plan.dwg
DLS



LEGEND

- ACCESSIBLE SUITE
- TUB/SHOWER
- ROLL-IN SHOWER
- CONTROL POINT
- RATED FIRE WALL
SEE SHEET A8.7 FOR DETAILS



FIRST FLOOR
1/16"=1'-0"

DATE
7/18/2016

DATE
3/13/2017