



DATE: 06/22/16

HVAC KEY NOTES:

- 1 4" EXHAUST DUCT FROM BATHROOM EXHAUST FAN TO APPROVED DISCHARGE CAP WITH INTEGRAL BACK DRAFT DAMPER. MAINTAIN 3FT MIN. CLEARANCE TO BUILDING OPENINGS, AND 10' MIN. FROM MECHANICAL FRESH AIR INTAKES. SEE 3/M4.0 FOR ROOF DISCHARGE DETAIL.
- 2 HOOD DRAWINGS (H-1 - H-5) FOR ADDITIONAL INFORMATION.
- 3 SEE SHEET M4.2 FOR KITCHEN HOOD SECTIONS
- 4 DISHWASHER: TYPE II HOOD AND EXHAUST SYSTEM.
- 5 6" SHEETMETAL EXHAUST DUCT IN SOFFIT TO APPROVED SOFFIT CAP WITH BACKDRAFT DAMPER.
- 6 8" EXHAUST DUCT TO APPROVED DISCHARGE CAP WITH INTEGRAL BACK DRAFT DAMPER. MAINTAIN 3FT MIN. CLEARANCE TO ALL OPENINGS. SEE 3/M4.0 FOR ROOF DISCHARGE DETAIL.
- 7 7" RANGE EXHAUST DUCT TO APPROVED CAP. PROVIDE UL LISTED FIRE CAULKING AT RATED MEMBRANE PENETRATIONS.
- 8 OUTDOOR COOLER/ FREEZER UNITS. ROUTE REFRIGERATION LINES UNDER SLAB IN 6" CONDUIT WITH LONG SWEEPS.
- 9 INSTALL ATTIC FANS (EF-8) NEAR ROOF PEAK, OPPOSITE OF MAIN PARKING.
- 10 8" EXHAUST DUCT FROM EXHAUST FAN TO APPROVED DISCHARGE CAP WITH INTEGRAL BACK DRAFT DAMPER. MAINTAIN 3FT MIN. CLEARANCE TO ALL OPENINGS. SEE 3/M4.0 FOR ROOF DISCHARGE DETAIL.
- 11 LOCATION OF FUTURE DOOR
- 12 MECHANICAL SHAFT COORDINATE WITH ARCHITECTURAL AND STRUCTURAL. SEE DETAILS 8/A8.8 AND 2/S2.5.
- 13 SPLIT SYSTEM EVAPORATORS, SEE MECH. SPECIFICATIONS
- 14 FILTER RETURN GRILLE FOR T-BAR INSTALLATION.
- 15 LAUNDRY MAKE UP AIR - SEE DETAIL 5/M4.0
- 16 ROUTE DRAIN OVER AND DOWN IN WALL. DAYLIGHT INTO JANITOR SINK.
- 17 NOT USED.
- 18 8x8 EXHAUST DUCT TO APPROVED CAP.
- 19 ROUTE ALL DUCTWORK UNDER MECHANICAL WELL INTO ATTIC SPACE.
- 20 SEE SHEETS SMOKE CONTROL SHEETS SC1.1, 1.2 1.3, 1.4 AND SC2.1 FOR ATRIUM SMOKE EXHAUST
- 21 COORDINATE DUCT ROUTING CLOSELY W/ STRUCTURAL. NOTIFY ARCHITECT IF CONFLICTS OCCUR. TYPICAL FOR ALL AREAS OF BUILDING.
- 22 W/ FSD AT TOP OF SHAFT
- 23 DRYER VENT, (4" MIN., MATCH DRYER DISCHARGE) EXHAUST DUCT TO APPROVED ROOF CAP WITH INTEGRAL BACK DRAFT DAMPER.
- 24 MOUNT PTAC UNIT 8" ABOVE OUTSIDE ROOF LINE. PROVIDE REMOTE THERMOSTAT OR REMOTE CONTROLLER WHERE MANUFACTURER EQUIPMENT HAS NO OPTION FOR REMOTE THERMOSTAT.
- 25 WATER HEATER VENTING UP. PROVIDE 3" PVC FOR VENT AND 3" PVC FOR COMBUSTION AIR. SEE DETAILS 1/M2.2 AND 14/M4.0.
- 26 DRYER VENT, 4" EXHAUST DUCT TO IN-O-VATE DRYER BOX AT WALL PENETRATION. PROVIDE UL LISTED RATED SEAL AT MEMBRANE PENETRATIONS. SEE SHEET M4.0 FOR DRYER DETAILS.
- 27 PROVIDE CONDENSATE LINE FOR FUTURE THRU-WALL PTAC UNITS IN "C" UNIT SPARE BEDROOMS.

lenity architecture
 3550 Lettice Court, SE, Salem, Oregon 97301
 PHONE (503) 399-0655
 P-503-399-1090

COLSON AND COLSON
 GENERAL CONTRACTOR, INC.
 2280 McGILCHRIST STREET SE, SUITE 200
 SALEM, OREGON, 97302
 PHONE (503) 586-7401

PORTLAND RETIREMENT RESIDENCE
 802 OCEAN AVE. PORTLAND, MAINE 04103

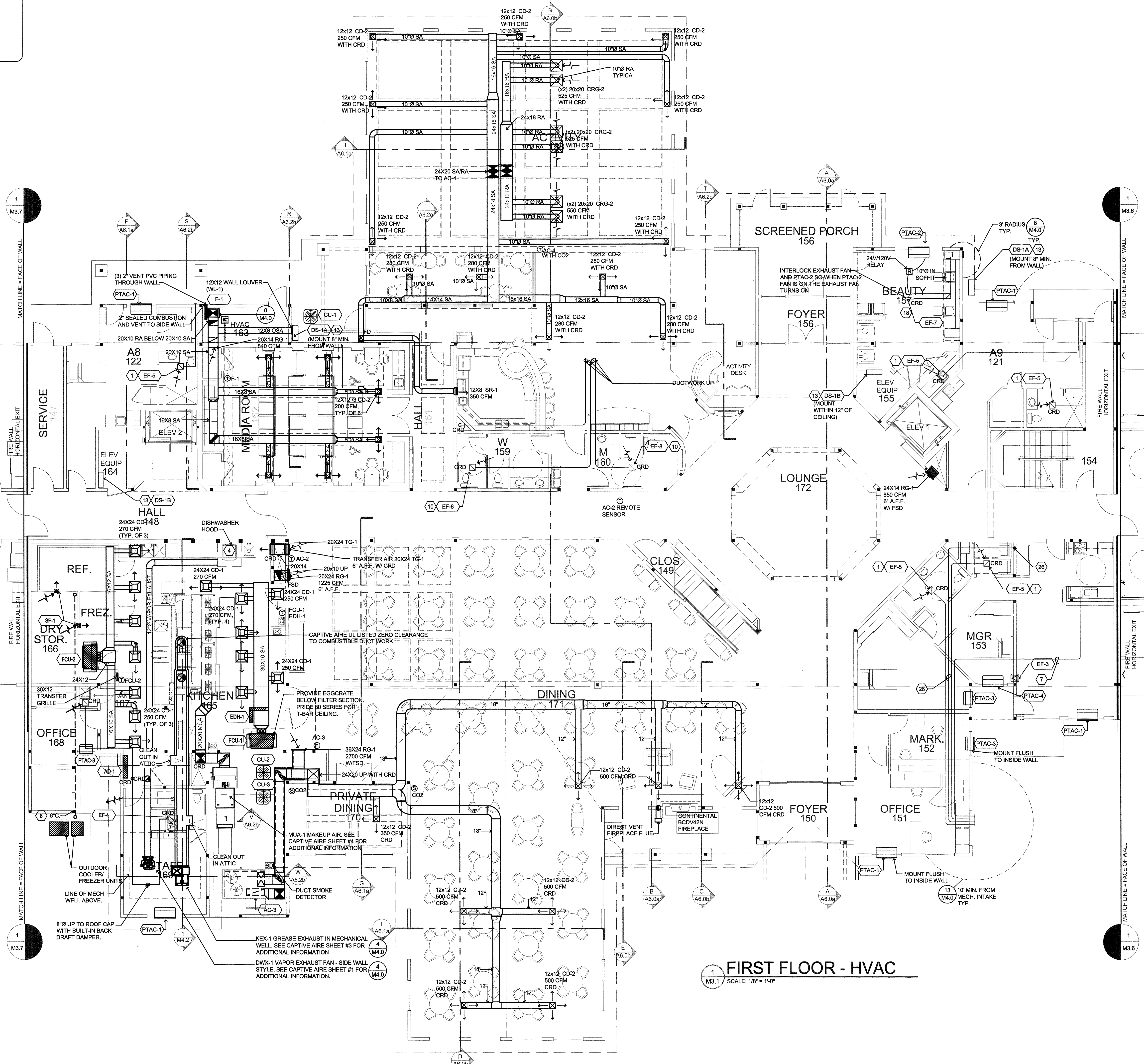
FIRST FLOOR CORE PLAN

DIFFUSER, REGISTER AND GRILLE SCHEDULE

SYM	TYPE	FACE	FRAME	DAMPER	FINISH	MODEL NO.
CD-1	CEILING DIFFUSER	LOWERED	T-BAR	MVD	WHITE	E.H. PRICE SMD
CD-2	CEILING DIFFUSER	LOWERED	SURFACE	CRD	WHITE	E.H. PRICE SMD
CD-3	CEILING SUPPLY/EXHAUST	LOWERED	SURFACE	N/A	WHITE	ALDES "CAR"
CRG-1	CEILING GRILLE	PERFORATED	T-BAR	MVD	WHITE	E.H. PRICE POR
CRG-2	CEILING GRILLE	PERFORATED	SURFACE	CRD	WHITE	E.H. PRICE POR
CRG-3	CEILING FILTER GRILLE	PERFORATED	T-BAR	MVD	WHITE	E.H. PRICE 10FF
RG-1	SIDEWALL SUPPLY GRILLE	FIXED BAR	1" BORDER	CRD	WHITE	E.H. PRICE 530
SR-1	SIDEWALL SUPPLY GRILLE	FIXED BAR	1" BORDER	CRD	WHITE	E.H. PRICE 530
TG-1	TRANSFER GRILLE	FIXED BAR	1" BORDER	CRD	WHITE	E.H. PRICE 530
CTG-1	CEILING GRILLE	FIXED BAR	SURFACE	CRD	WHITE	E.H. PRICE 530
WL-1	WALL LOUVER	FIXED BAR	DRAINABLE	CRD	MILL	RUSKIN ELF8750X
WL-2	WALL LOUVER	FIXED BAR	2" DEEP	CRD	MILL	GREENHECK EHR-201

CRD = OPPOSED SLIDE DAMPER
MVD = MANUAL VOLUME DAMPER

SEE DETAILS 8/M2.1, 9/M2.1, AND 9/M4.0 FOR ALLOWABLE BORING / NOTCHING OF MEMBERS.



FIRST FLOOR - HVAC

SCALE: 1/8" = 1'-0"

DATE: 8/28/2015

REVISED DATE: 9/22/2015

SHEET M3.1

