

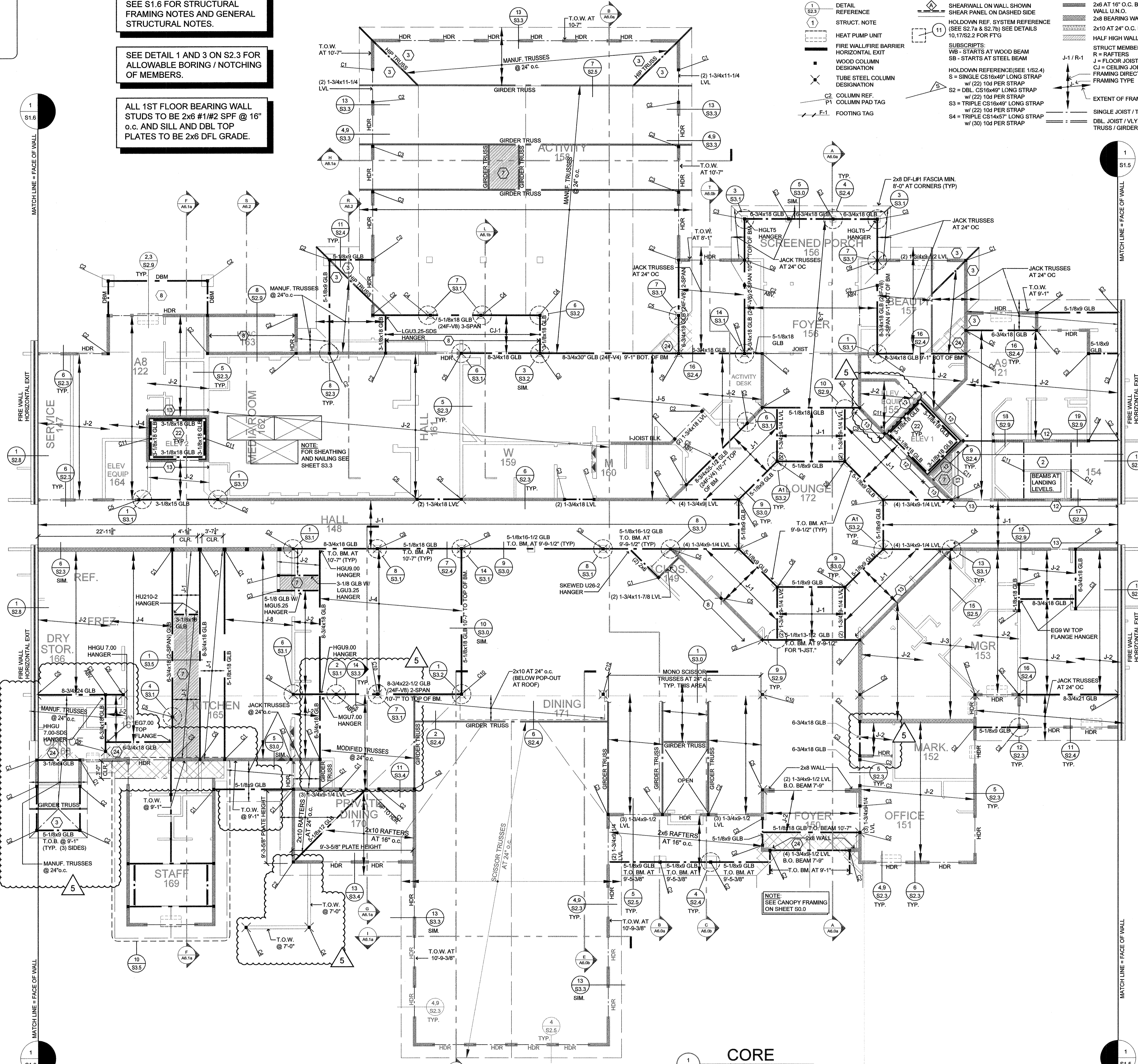
SEE S1.6 FOR STRUCTURAL FRAMING NOTES AND GENERAL STRUCTURAL NOTES.

SEE DETAIL 1 AND 3 ON S2.3 FOR ALLOWABLE BORING / NOTCHING OF MEMBERS.

ALL 1ST FLOOR BEARING WALL STUDS TO BE 2x6 #1/#2 SPF @ 16" o.c. AND SILL AND DBL TOP PLATES TO BE 2x6 DFL GRADE.

STRUCTURAL LEGEND:

- ① DETAIL REFERENCE
- ② STRUCT. NOTE
- HP HEAT PUMP UNIT
- FW FIRE WALL/FIRE BARRIER
- WC WOOD COLUMN DESIGNATION
- TS TUBE STEEL COLUMN DESIGNATION
- C2 COLUMN REF.
- P1 COLUMN PAD TAG
- F-1 FOOTING TAG
- SW SHEARWALL ON WALL SHOWN
- SP SHEAR PANEL ON DASHED SIDE
- HR HOLDOWN REF. SYSTEM REFERENCE (SEE S2.7a & S2.7b) SEE DETAILS 10, 17, 18, 22 FOR FTG
- WB SUBSCRIPTS: WB - STARTS AT WOOD BEAM SB - STARTS AT STEEL BEAM
- HOLDOWN REFERENCE (SEE 1(S2.4) S = SINGLE CS16x49" LONG STRAP w/ (2) 10d PER STRAP S2 = DBL CS16x49" LONG STRAP w/ (2) 10d PER STRAP S3 = TRIPLE CS16x49" LONG STRAP w/ (2) 10d PER STRAP S4 = TRIPLE CS14x57" LONG STRAP w/ (3) 10d PER STRAP
- 2x6 @ 16" O.C. BEARING WALL U.O.N.
- 2x8 BEARING WALL PER PLAN
- 2x10 @ 24" O.C. BEARING WALL
- HALF HIGH WALL PER PLAN
- STRUCT MEMBER (SEE BELOW)
- J-1 / R-1
- R = RAFTERS
- J = FLOOR JOISTS
- CJ = CEILING JOISTS
- FRAMING DIRECTION
- FRAMING TYPE
- EXTENT OF FRAMING
- SINGLE JOIST / TRUSS
- DBL. JOIST / V.L.Y. TRUSS HIP TRUSS / GIRDER TRUSS



COLUMN SCHEDULE

COL	MATERIAL	SIZE	BASEPLATE
C1	SPF #1/#2 OR BETTER DFL #1	(2) 2x6 4x6	
C2	SPF #1/#2 OR BETTER DFL #1	(3) 2x6 6x6	
C3	SPF #1/#2 OR BETTER DFL #1	8x6	
C4	ASTM A500	3-1/2x3-1/2x1/4"	9-1/2"x0'-91/2"x3/4"
C5	ASTM A500	4x4x1/4"	10'0"x0'-10"x3/4"
C6	ASTM A500	4x4x5/16"	10'0"x0'-10"x3/4"
C7	ASTM A500	4x4x3/8"	10'0"x0'-10"x3/4"
C8	ASTM A500	5x5x3/8"	11'0"x0'-11"x3/4"
C9	ASTM A500	5x5x1/4"	11'0"x0'-11"x3/4"
C10	ASTM A500	6x6x5/16"	12'x12'x3/4"
C11	SPF #1/#2 OR BETTER DFL #2	(4) 2x4 4x6	
C12	ASTM A500	8x8x1/4"	14'x14'x3/4"

JOIST SCHEDULE

JOIST	MATERIAL	SIZE	SPACING
J-1	REDBUILT RED-145	9-1/2" DEPTH	24" oc
J-2	REDBUILT RED-190	18" DEPTH	24" oc
J-3	REDBUILT RED-190	18" DEPTH	16" oc
J-4	REDBUILT RED-190	DBL 18" DEPTH	19.2" oc
J-5	REDBUILT RED-190	18" DEPTH (multi-span)	24" oc
J-6	REDBUILT RED-145	DBL 9-1/2" DEPTH	16" oc
J-7	REDBUILT RED-145	9-1/2" DEPTH	12" oc
J-8	REDBUILT RED-190	DBL 18" DEPTH	16" oc
J-9	REDBUILT RED-190	DBL 18" DEPTH	24" oc
CJ-1	SPF #1/#2	2x10	24" oc

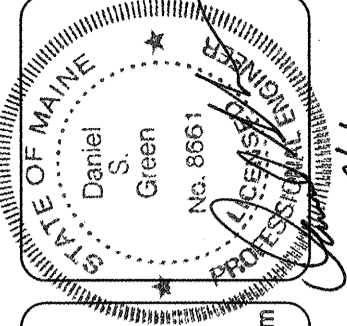
RAFTER SCHEDULE

RAFTER	MATERIAL	SIZE/SPAN*	SPACING
R-1	SPF #1/#2	2x12, 8'-6" SPAN	24" oc
R-2	SPF #1/#2	2x12, 11'-6" SPAN	16" oc
R-3	REDBUILT RED-190	11-7/8" DEPTH	24" oc
R-4	REDBUILT RED-190	DBL 11-7/8" DEPTH	19.2" oc
R-5	SPF #1/#2	2x6, 7'-6" SPAN	24" oc

SHEARWALL SCHEDULE

SHEARWALL MARK	SHAFTING TYPE & THICKNESS	SHAFTING NAIL INFO.	FLR. TO FLR. CONNECTION	SHEARWALL TO CONC. CONN.	LOAD (k)
B	7/16"	Bd	22"	6/32.3 1/2" DIA. @ 36" or 5/32.6 5/8" DIA. @ 48"	210
C	7/16"	Bd	14"	6/32.3 1/2" DIA. @ 24" or 5/32.6 5/8" DIA. @ 36"	320
D	7/16"	Bd	11"	6/32.3 1/2" DIA. @ 10" or 5/32.6 5/8" DIA. @ 16"	415
E	7/16"	Bd	8"	6/32.3 1/2" DIA. @ 8" or 5/32.6 5/8" DIA. @ 12"	535
F	7/16"	Bd	7"	7/32.6 1/2" DIA. @ 12" or 5/32.6 5/8" DIA. @ 18"	640
G	7/16"	Bd	5-1/2"	7/32.6 1/2" DIA. @ 10" or 5/32.6 5/8" DIA. @ 15"	830
H	7/16"	Bd	2"	7/32.6 1/2" DIA. @ 6" or 5/32.6 5/8" DIA. @ 8"	1100
J	10/32"	10d	2"	7/32.6 1/2" DIA. @ 6" or 5/32.6 5/8" DIA. @ 8"	1460

- NOTE: SHEARWALL TYPES "F", "J" ARE ON BOTH SIDES OF WALL.
- KEY NOTES:**
- 3x STUDS AT ADJOINING PLYWD PANEL EDGES.
 - 3x STUDS AND SILL PLATES, STAGGER PLYWD PANEL EDGES.
 - 3x DFL STUDS AND SILL PLATES, STAGGER PLYWD PANEL EDGES.
 - 5/8" GYPSUM SHEATHING TO BE SECURED WITH 6d COOLER NAILS OR #6-1" TYPE "W" OR "S" SCREWS DIRECTLY TO STUDS.
 - PLYWD PANEL EDGES ARE TO BE STAGGERED TO FALL ON DIFFERENT FRAMING MEMBERS.
 - NAILS ARE TO BE COMMON OR HOT DIPPED GALVANIZED U.O.N.
 - 3x SILL PLATES REQUIRED AT FOUNDATION ONLY.
- SHEAR PANEL NOTES:**
- * SHEAR VALUES ARE ADJUSTED FOR SPRUCE-PINE-FIR STUDS @ 16" oc U.O.N.
 - * ALL APA SHEATHING SHEARWALLS TO BE BACKED WITH 2" NOMINAL OR WIDER FRAMING.
 - * WHEN APA RATED PANELS ARE INSTALLED TO BOTH SIDES OF WALL, PANEL JOINTS OFFSET TO FALL ON DIFFERENT FRAMING MEMBERS.
 - * NAILING NOT TO PENETRATE THE OUTER VENEER LAYER.
 - * WHEN USING A NAIL GUN, CONTRACTOR SHALL ENSURE THAT GUN IS SET TO INSTALL NAIL SLIGHTLY BELOW OR SURFACE BEING NAILED. NAIL SHALL NOT BE SET BY HAMMER. DO NOT ALLOW NAIL TO OVER PENETRATE WOOD SURFACE ESPECIALLY ON SHEARWALLS.
 - * ALL EDGES ON APA RATED PANELS TO BE BLOCKED TO MAINTAIN STRENGTH.
 - * ALL PANELS LISTED MAY NOT BE USED ON ALL PROJECTS. REFER TO THE SHEARWALL LAYOUT PLANS FOR SIZE, TYPE AND LOCATION OF PANELS.
 - * GYPSUM WALLBOARD LOAD IS REDUCED IN HIGH SEISMIC LOCATIONS.
 - * SEE DETAIL #452.5 FOR STAPLES TO NAIL EQUIVALENT TABLE.
 - * 7/16" OSB (PS2-90 GRADE) MAY BE USED IF APPLIED DIRECTLY TO FRAMING WHEN STUDS ARE SPACED A MAXIMUM OF 16" o.c. OR PANELS ARE APPLIED WITH LONG DIMENSION ACROSS STUDS. 15/32 OSB SHALL BE USED WHEN STUDS ARE SPACED A MAXIMUM OF 24" o.c.
 - * USE EITHER 16d NAILS OR LTP4 CLIPS WHEN SHTG IS ATTACHED TO LOWER TOP PLATE.
 - * ALL ANCHOR BOLTS AT SHEARWALLS TO HAVE A 3x3x1/4 THICK PLATE WASHER.



lenity architecture
 1850 Kennebec Street, Suite 200
 Portland, ME 04103
 Phone: 503.938.1030

COLSON AND COLSON
 GENERAL CONTRACTOR, INC.
 2280 MCGILCHRIST STREET, SUITE 200
 SALEM, OREGON 97302
 PHONE (503) 586-7401

PORTLAND
 RETIREMENT RESIDENCE
 802 OCEAN AVE. PORTLAND, MAINE 04103

2ND FLOOR
 CORE FRAMING
 CORE PLAN

DATE: 8/28/2015
 REVISED DATE: 9/22/2015, 2/2/2016, 7/18/2016

SHEET
S1.4