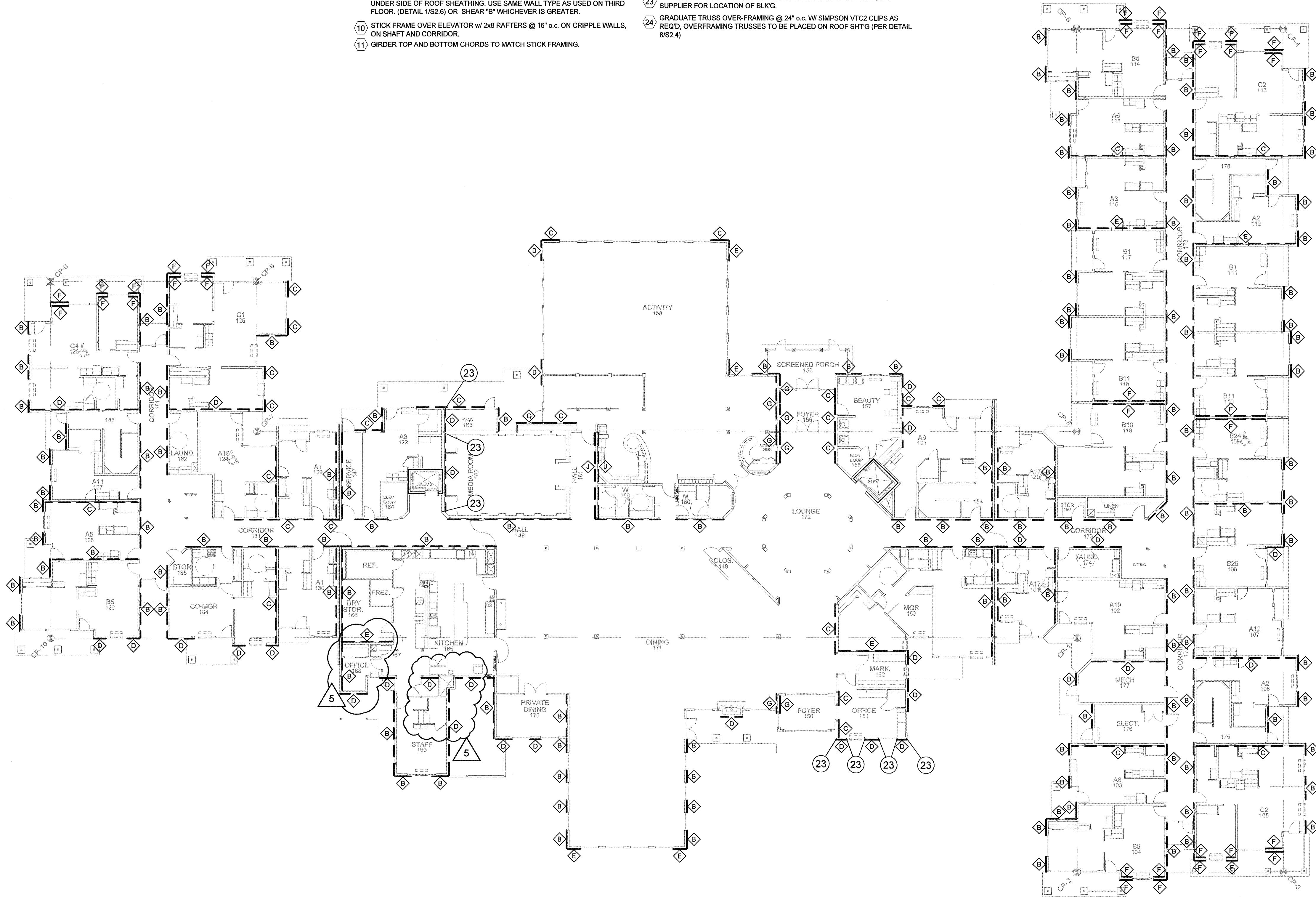


STRUCTURAL FRAMING NOTES

- 1 SIMPSON SSU HANGERS - CONNECT JACK TRUSS TOP AND BOTTOM CHORD, OR RAFTER AND C/LG JOISTS (WHERE STICK FRAMING IS USED) TO CARRY TRUSS.
- 2 TYPICAL STAIR CONSTRUCTION: (see architectural details A7.4) MID LANDINGS - 1-3/4x11-7/8 LVL @ 24" oc.
- 3 HEADERS - (2) 1-3/4x11-7/8. SEE DETAIL 13/S2.5 FOR STRINGER SIZE AND SPACING, DETAIL 11/S3.3 FOR ROOF FRAMING & DETAIL 9/S2.4 FOR BEAM SIZE AND LOCATIONS.
- 4 GRADUATED TRUSSES FOR HIP/VALLEY CONSTRUCTION.
- 5 SPACE JOISTS 32" FOR H.V.A.C. SUPPORT FLOOR SHEATHING w/ FLAT 4x12 @ 24" o.c. w/ Z2 CLIPS THIS LOCATION. (TYP.)
- 6 TRUSSES BEAR ON EXTERIOR WALL AND CANTILEVER OVER TOP FLOOR DECKS. SIMPSON H1 EACH TRUSS CANTILEVERED.
- 7 TRUSSES BEAR ON TOP OF WALL, OR COLUMN. SIMPSON H2.5 ANCHOR TIES TRUSS TO FRAMING MEMBER BELOW EACH END OF EACH TRUSS
- 8 SPACE FRAMING MEMBER FOR MECH CHASE, HATCHES AND OPENINGS. SEE DTLS. 2 & 3/S2.5 CONFIRM CLEAR OPENING REQMENTS WITH MECH CONTR.
- 9 2x6 DECK JOISTS @ 16" oc/ U.O.N. SEE DTL SHEET A7.3 and 10 & 11/S2.3 FOR DECK FRAMING.
- 10 SHEAR WALL NOTES- (PANELS REFER TO DETAIL 2/S2.6) * SHEAR WALL CONSTRUCTION IN ACCORDANCE WITH REPORT NO NER-272. * SHEAR WALL PERPENDICULAR TO CORRIDOR CONTINUE THROUGH ATTIC TO UNDER SIDE OF ROOF SHEATHING. USE SAME WALL TYPE AS USED ON THIRD FLOOR. (DETAIL 1/S2.6) OR SHEAR "B" WHICHEVER IS GREATER.
- 11 STICK FRAME OVER ELEVATOR w/ 2x6 RAFTERS @ 16" o.c. ON CRIPPLE WALLS, ON SHAFT AND CORRIDOR.
- 12 GIRDER TOP AND BOTTOM CHORDS TO MATCH STICK FRAMING.
- 12 NOT USED
- 13 FIRE BARRIER WALL SEE DETAIL 15 AND 16 ON S2.9
- 14 DRAG STRUTS - REFER TO STRUC. DETAIL 9 /S2.6, DRAG STRUT @ FLOOR.
- 15 DRAG STRUTS - REFER TO STRUC. DETAIL 11/S2.6, DRAG STRUT @ FLOOR.
- 16 DRAG STRUTS - REFER TO STRUC. DETAIL 11/S2.6 DESIGN TRUSS FOR ADDITIONAL 200# LATERAL LOAD PLACED ON TOP CHORD OF TRUSS. SEE DETAIL 13/S2.6 FOR UPLIFT CONNECTIONS. SEE DETAIL 15/S2.6 FOR WALL CONNECTION.
- 17 DRAG STRUTS - REFER TO STRUC. DETAIL 12/S2.6, DESIGN TRUSS FOR ADDITIONAL 500# LATERAL LOAD PLACED ON TOP CHORD OF TRUSS. SEE DETAIL 13/S2.6 FOR UPLIFT CONNECTIONS.
- 18 LOCATION OF FUTURE DOOR 14'-6" FROM CORRIDOR SIDE OF WALL OR 6" AWAY FROM NEAREST WALL. (PROVIDE DOOR HEADER IN FRAMING SEE DETAIL 10/S3.3).
- 19 SCISSORS TRUSSES TO BARE ON BEAMS. DO NOT HANG TRUSSES FROM BEAM
- 20 (1)-MST72 STRAPS BM TO DBL TOP PLATE/TRUSS OR BEAM TO BEAM
- 21 (2)-MST72 STRAPS BM TO DBL TOP PLATE. W/ (56)-16d NAILS
- 22 MITER BEAMS AT CORNERS OR PROVIDE (2) SIMPSON HGA10 ANGLES TOP AND BOTTOM. (AT ELEVATOR)
- 23 PROVIDE BLKG FOR KITCHEN HOOD. COORDINATE W/ KITCHEN EQUIP. SUPPLIER FOR LOCATION OF BLKG.
- 24 GRADUATE TRUSS OVER-FRAMING @ 24" o.c. W/ SIMPSON VTC2 CLIPS AS REQD. OVERFRAMING TRUSSES TO BE PLACED ON ROOF SHTG (PER DETAIL 8/S2.4)

STRUCTURAL LEGEND:

- 1 S2.3 DETAIL REFERENCE
- 1 STRUCT. NOTE
- HEAT PUMP UNIT
- FIRE WALL/FIRE BARRIER HORIZONTAL EXIT
- WOOD COLUMN DESIGNATION
- TUBE STEEL COLUMN DESIGNATION
- C2 P1 COLUMN REF. COLUMN PAD TAG
- F-1 FOOTING TAG
- 4 SHEARWALL ON WALL SHOWN SHEAR PANEL ON DASHED SIDE
- 11 HOLDOWN REF. SYSTEM REFERENCE (SEE S2.7a & S2.7b) SEE DETAILS 10,17/S2.2 FOR FTG
- SUBSCRIPTS: WB - STARTS AT WOOD BEAM SB - STARTS AT STEEL BEAM
- HOLDOWN REFERENCE(SEE 1/S2.4) S = SINGLE CS16x49" LONG STRAP w/ (22) 10d PER STRAP S2 = DBL. CS16x49" LONG STRAP w/ (22) 10d PER STRAP S3 = TRIPLE CS16x49" LONG STRAP w/ (22) 10d PER STRAP S4 = TRIPLE CS14x57" LONG STRAP w/ (30) 10d PER STRAP
- 2x6 AT 16" O.C. BEARING WALL U.N.O. 2x8 BEARING WALL PER PLAN 2x10 AT 24" O.C. BEARING WALL HALF HIGH WALL PER PLAN STRUCT MEMBER (SEE BELOW) R = RAFTERS J = FLOOR JOISTS C = CEILING JOISTS FRAMING DIRECTION FRAMING TYPE
- J-1 / R-1 EXTENT OF FRAMING
- SINGLE JOIST / TRUSS DBL. JOIST / VLY. TRUSS HIP TRUSS / GIRDER TRUSS



SHEARWALL SCHEDULE

SHEARWALL MARK	SHT'G. TYPE & THICKNESS	SHT'G. NAIL INFO.	FLR. TO FLR. CONNECTION	SHEARWALL TO CONC. CONN.	ANCHOR BOLTS TO BE 10" ON CENTER	LOAD
B	7/16"	SEE NOTE 1	22"	1/2" DIA. @ 36" or 5/8" DIA. @ 48"	210	
C	7/16"	SEE NOTE 1	14"	1/2" DIA. @ 24" or 5/8" DIA. @ 36"	320	
D	7/16"	SEE NOTE 1	11"	1/2" DIA. @ 10" or 5/8" DIA. @ 16"	415	
E	7/16"	SEE NOTE 1	8"	1/2" DIA. @ 12" or 5/8" DIA. @ 18"	335	
F	7/16"	SEE NOTE 1	7"	1/2" DIA. @ 12" or 5/8" DIA. @ 18"	840	
G	7/16"	SEE NOTE 1	5'-10"	1/2" DIA. @ 10" or 5/8" DIA. @ 15"	830	
H	7/16"	SEE NOTE 1	4'-10"	1/2" DIA. @ 8" or 5/8" DIA. @ 12"	1100	
J	7/16"	SEE NOTE 1	4'-10"	1/2" DIA. @ 6" or 5/8" DIA. @ 8"	1460	

KEY NOTES:

1. 3x STUDS AT ADJOINING PLYWD PANEL EDGES.
2. 3x STUDS AND SILL PLATES. STAGGER PLYWD PANEL EDGES.
3. 3x DFL STUDS AND SILL PLATES. STAGGER PLYWD PANEL EDGES.
4. 5/8" GYPSUM SHEATHING TO BE SECURED WITH 6d COOLER NAILS OR #6-1" TYPE "W" OR "S" SCREWS DIRECTLY TO STUDS.
5. PLYWD PANEL EDGES ARE TO BE STAGGERED TO FALL ON DIFFERENT FRAMING MEMBERS.
6. NAILS ARE TO BE COMMON OR HOT DIPPED GALVANIZED U.O.N.
7. 3x SILL PLATES REQUIRED AT FOUNDATION ONLY.

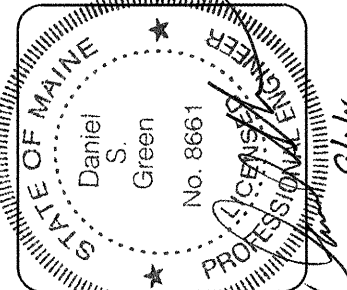
SHEAR PANEL NOTES:

- * SHEAR VALUES ARE ADJUSTED FOR SPRUCE-PINE-FIR STUDS @ 16" oc U.O.N.
- * ALL APA SHEATHING SHEARWALLS TO BE BACKED WITH 2" NOMINAL OR WIDER FRAMING.
- * WHEN APA RATED PANELS ARE INSTALLED TO BOTH SIDES OF WALL, PANEL JOINTS OFFSET TO FALL ON DIFFERENT FRAMING MEMBERS.
- * NAILING NOT TO PENETRATE THE OUTER VENEER LAYER.
- * WHEN USING A NAIL GUN, CONTRACTOR SHALL ENSURE THAT GUN IS SET TO INSTALL NAIL SLIGHTLY PROUD OF SURFACE BEING NAILED. NAIL SHALL THEN BE SET BY HAMMER. DO NOT ALLOW NAIL TO OVER PENETRATE WOOD SURFACE ESPECIALLY ON SHEARWALLS.
- * ALL EDGES ON APA RATED PANELS TO BE BLOCKED TO MAINTAIN STRENGTH.
- * ALL PANELS LISTED MAY NOT BE USED ON ALL PROJECTS. REFER TO THE SHEARWALL LAYOUT PLANS FOR SIZE, TYPE AND LOCATION OF PANELS.
- * GYPSUM WALLBOARD LOAD IS REDUCED IN HIGH SEISMIC LOCATIONS.
- * SEE DETAIL #14/S2.5 FOR STAPLES TO NAIL EQUIVALENT TABLE.
- * 7/16 OSB (PS2-32 GRADE) MAY BE USED IF APPLIED DIRECTLY TO FRAMING WHEN STUDS ARE SPACED A MAXIMUM OF 16" o.c. OR PANELS ARE APPLIED WITH LONG DIMENSION ACROSS STUDS. 15/32 OSB SHALL BE USED WHEN STUDS ARE SPACED A MAXIMUM OF 24" o.c.
- * USE EITHER 16d NAILS OR "LTP4" CLIPS WHEN SHT'G IS ATTACHED TO LOWER TOP PLATE.
- * ALL ANCHOR BOLTS AT SHEARWALLS TO HAVE A 3x3x1/4 THICK PLATE WASHER.

SEE S1.1 - S1.3 FOR ADDITIONAL FOUNDATION LOCATION AND INFORMATION. SEE S1.4 - S1.6 FOR ADDITIONAL FRAMING MEMBERS LOCATION AND INFORMATION.

SEE DETAIL 1 AND 3 ON S2.3 FOR ALLOWABLE BORING / NOTCHING OF MEMBERS.

-- SHEARWALLS ARE FROM FOUNDATION TO 2ND FLOOR / LOWER ROOF



lenity architecture
 360 Kennebec Street, Suite 200
 Portland, ME 04101
 P: 503.398.1090 F: 503.398.0555 W: lenityarchitecture.com

COLSON AND COLSON
 GENERAL CONTRACTOR, INC.
 2280 McGILCHRIST STREET SE, SUITE 200
 SALEM, OREGON, 97302
 PHONE (503) 586-7401

PORTLAND
 RETIREMENT RESIDENCE
 802 OCEAN AVE. PORTLAND, MAINE 04103

1ST FLOOR
 SHEARWALL
 PLAN

DATE: 8/28/2015
 REVISED DATE: 9/22/2015, 2/2/2016, 7/18/2016

SHEET
 S0.2