

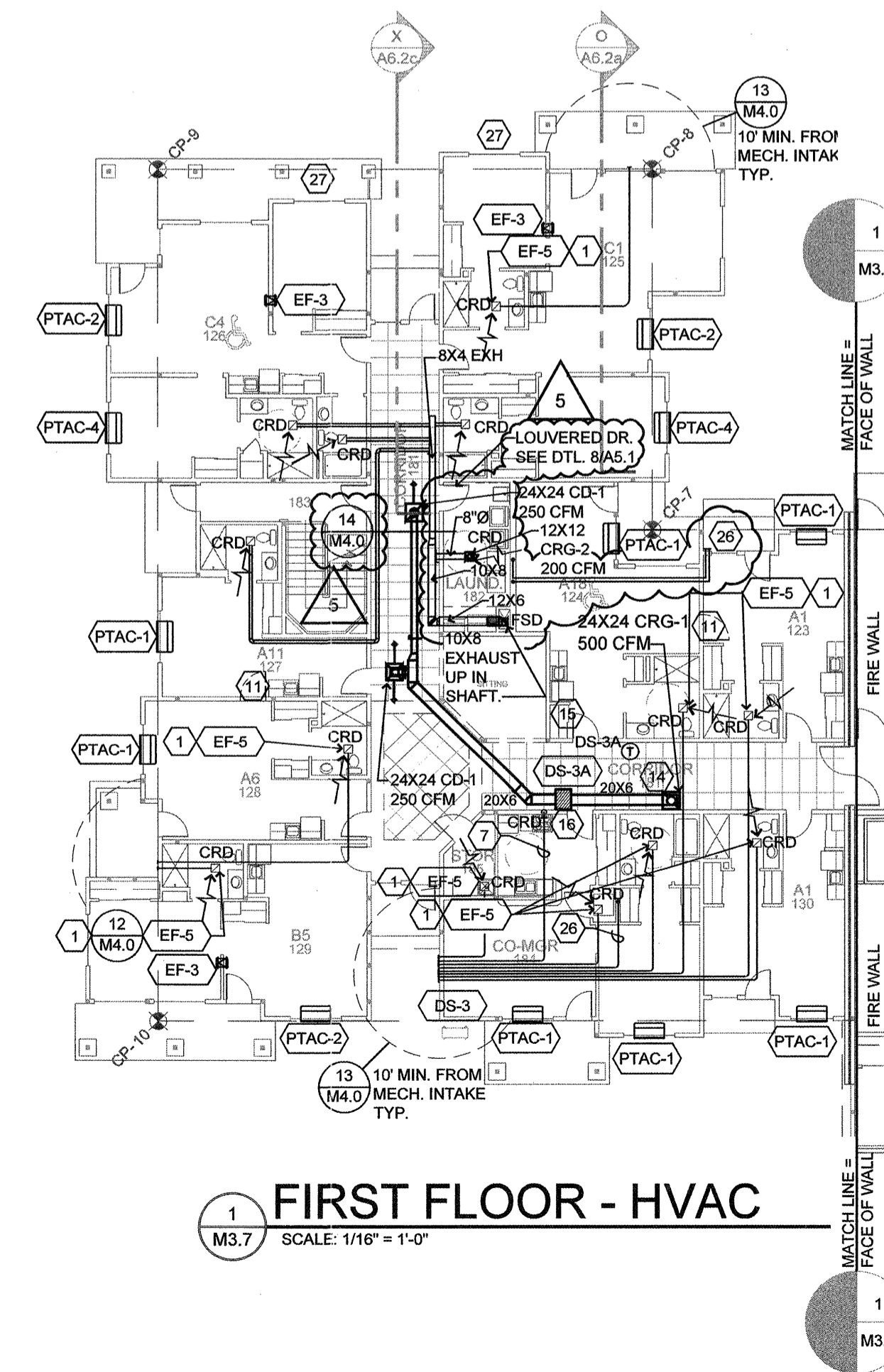
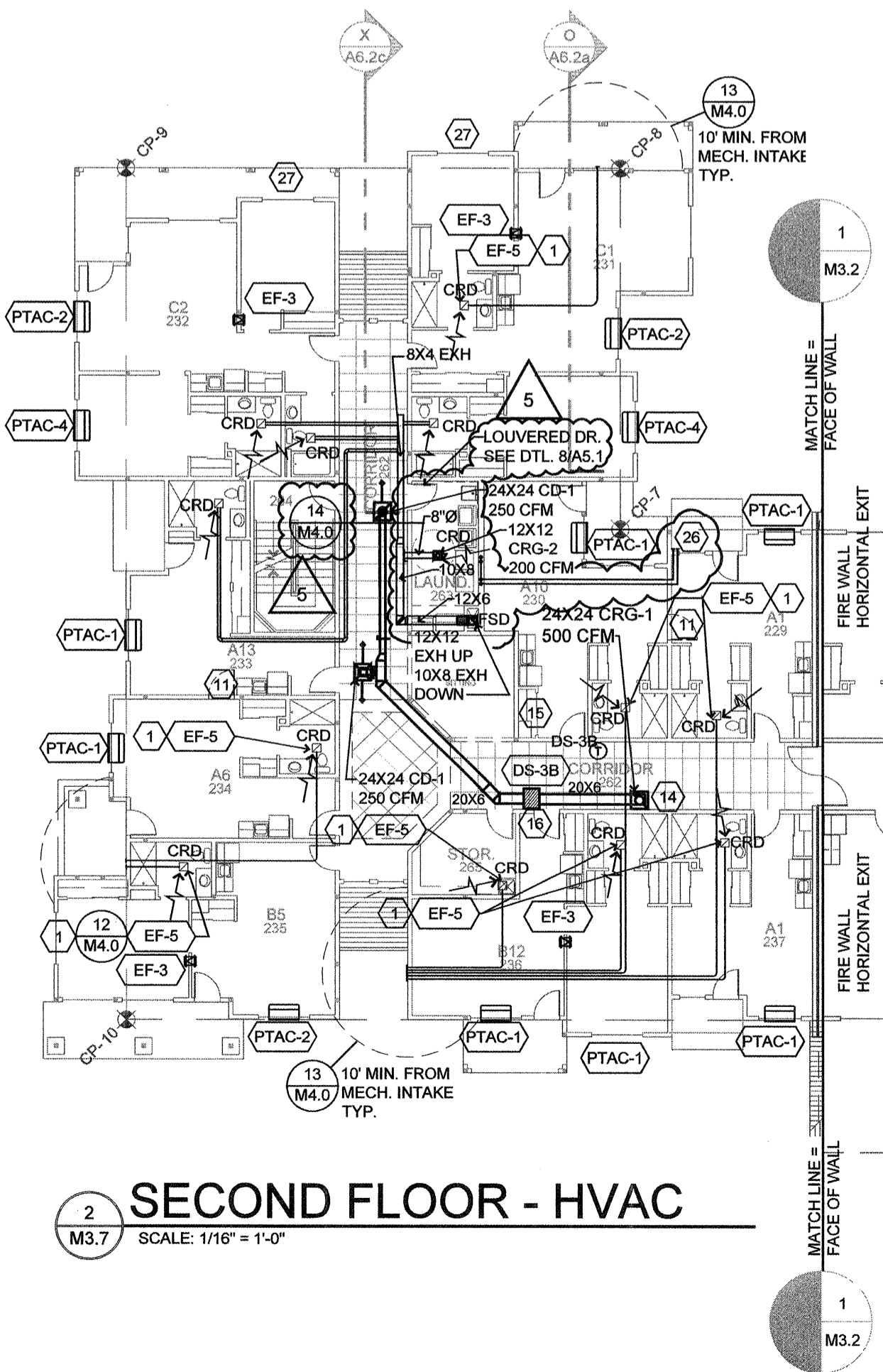
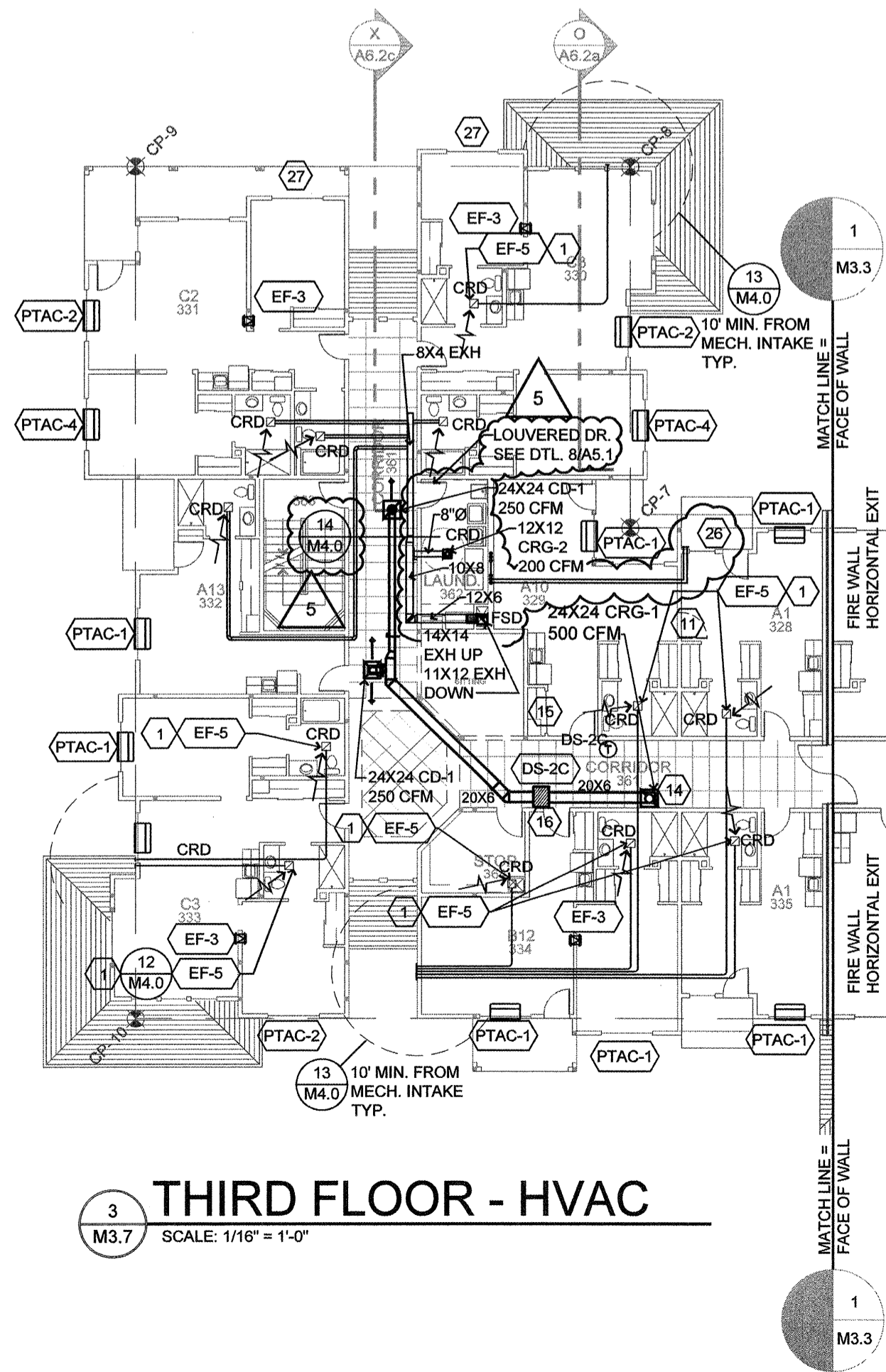
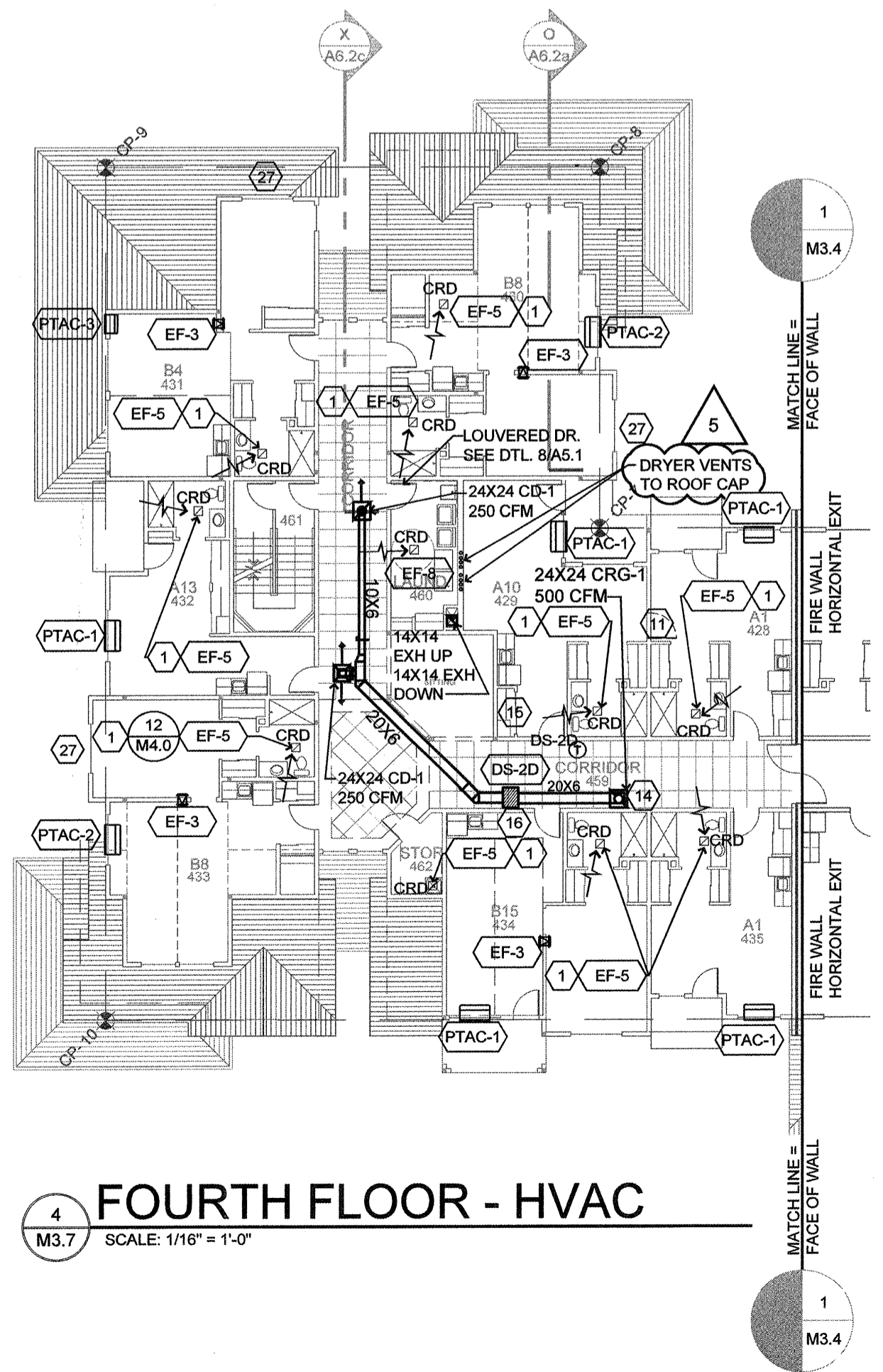
Ventilation Air Schedule - Ashrae 62.1

Room Name and Number	Area (SQ. FT.)	Occupant Density (Person / 1000 SQ. FT.)	Number of Occupants	People Outdoor Air Rate (CFM)	Area Outdoor Air Rate (CFM/FT.SQ.)	Total OSA Required (CFM)	Supply Air to Space (CFM)	Makeup Air to Space (CFM)	OSA Being Provided in Space (CFM)	Return Air from Space (CFM)	Exhaust Air Required (CFM)	Exhaust Air from Space (CFM)	Equipment Mark No.
Main Kitchen	1400	0	0	0	0.7	980	1800	0	390.00	1575	1410	0	F-1
Hood System								2400			0	3500	EF-1
Transfer air Dine								710					AH-3
TOTAL	1400					980	1800	3110	390.00	1575	1410	3500	
Kitchen hood type 1 is a variable volume with VFD interlocking controls between exhaust fan and make up air.													
Activity room 158	2190	100	219	7.5	0.06	1774	2400	0	444.44	1900	0	200	F-2-2a/Hood
Toilet 159	170	0	0	0	0	0	0	150	27.78	0	140	150	F-2-2a/EF-8
Toilet 160	130	0	0	0	0	0	0	150	27.78	0	140	150	F-2-2a/EF-8
TOTAL	2490					1774	2400	300	500.00	1900	280	500	
Outside air being provided design: Activity Room to be provided with CO2 sensor set for 700 PPM to signal economizer to full open.													
Media Room 162	700	25	18	10	0.12	264	1200	0	400.00	800	0	0	F-3
TOTAL	700					264	1200	0	400.00	800	0	0	
Outside air being provided design: 400													
Corridor 173	1550	0	0	0	0.06	93	450	0	103.85	450	0	0	SF-2
Laundry 177	125	10	2	5	0.12	25	0	150	34.62	0	0	150	SF-2/EF-8
Corridor 256	1550	0	0	0	0.06	93	450	0	103.85	450	0	0	SF-2
Laundry 257	125	10	2	5	0.12	25	0	150	34.62	0	0	150	SF-2/EF-8
Corridor 356	1550	0	0	0	0.06	93	600	0	136.46	600	0	0	SF-2
Laundry 357	125	10	2	5	0.12	25	0	150	34.62	0	0	150	SF-2/EF-8
TOTAL	5025					354	1500	450	450.00	1500	0	450	
Outside air being provided: 450													
Corridor 181	1667	0	0	0	0.06	100	600	0	109.76	600	0	0	SF-3
Laundry 182	136	10	2	5	0.12	26	0	150	32.93	0	0	150	SF-3/EF-8
Corridor 201	1667	0	0	0	0.06	100	600	0	109.76	600	0	0	SF-3
Laundry 202	136	10	2	5	0.12	26	0	150	32.93	0	0	150	SF-3/EF-8
Corridor 361	1667	0	0	0	0.06	100	600	0	131.71	600	0	0	SF-3
Laundry 362	136	10	2	5	0.12	26	0	150	32.93	0	0	150	SF-3/EF-8
TOTAL	5409					379	1600	450	450.00	1600	0	450	
Outside air being provided: 450													
Room Name and Number	Area (SQ. FT.)	Occupant Density (Person / 1000 SQ. FT.)	Number of Occupants	People Outdoor Air Rate (CFM)	Area Outdoor Air Rate (CFM/FT.SQ.)	Total OSA Required (CFM)	Supply Air to Space (CFM)	Makeup Air to Space (CFM)	OSA Being Provided in Space (CFM)	Return Air from Space (CFM)	Exhaust Air Required (CFM)	Exhaust Air from Space (CFM)	Equipment Mark No.
Lounge 172	430	30	13	13	15	195	1200	0	234.00	1000	0	0	AC-1
TV Room 253	474	30	15	15	15	225	500	0	97.50	400	0	0	AC-1
*Reading 252	625	30	19	15	15	285	850	0	165.75	550	0	0	AC-1
PC Room 251	146	7	2	2	20	40	250	0	48.76	250	0	0	AC-1
Wing A Corridor	9950	0	0	0	0.05	298	1200	0	234.00	1000	0	0	AC-1
TOTAL	7625					1043	4000	0	780.00	3200	0	0	
Outside air being provided: 780													
Dining Room and TV Room to be provided with CO2 sensor set for 700 PPM to signal economizer to full open.													
Corridor 355	960	0	0	0	0.06	58	340	0	62.04	340	0	0	AC-2
Multi 255	600	120	72	5	0.06	396	1200	0	218.98	1200	0	0	AC-2
Part of Dine Inter	1000	70	70	7.5	0.18	705	1200	0	218.98	700	0	0	AC-2
TOTAL	2560					1159	2740	0	500.00	2240	0	0	
Outside air being provided: 500													
Dining Room and Multi Room to be provided with CO2 sensor set for 700 PPM to signal economizer to full open.													
Part of Dine 171/170	3028	70	212	20	20	4240	3850	0	400.00	3000	0	0	AC-3
TOTAL	3028					0	3850	0	400.00	3000	0	0	
Outside air being provided: 450													
Dining Room and P-dine to be provided with CO2 sensor set for 700 PPM to signal economizer to full open.													

DIFFUSER, REGISTER AND GRILLE SCHEDULE

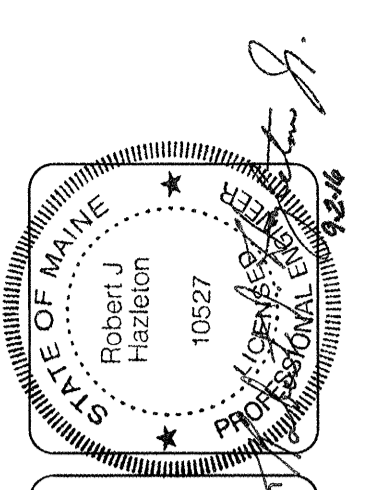
SYM	TYPE	FACE	FRAME	DAMPER	FINISH	MODEL NO.
CD-1	CEILING DIFFUSER	LOUVERED	T-BAR	MVD	WHITE	E.H. PRICE SMD
CD-2	CEILING DIFFUSER	LOUVERED	SURFACE	ORBD	WHITE	E.H. PRICE SMD
CD-3	CEILING SUPPLY/EXHAUST	LOUVERED	SURFACE	N/A	WHITE	ALDES "CAR"
CRG-1	CEILING GRILLE	PERFORATED	T-BAR	MVD	WHITE	E.H. PRICE PDR
CRG-2	CEILING GRILLE	PERFORATED	SURFACE	ORBD	WHITE	E.H. PRICE PDR
CRG-3	CEILING FILTER GRILLE	PERFORATED	T-BAR	MVD	WHITE	E.H. PRICE 10FF
RG-1	SIDEWALL GRILL	FIXED BAR	1" BORDER	ORBD	WHITE	E.H. PRICE 530
SR-1	SIDEWALL SUPPLY GRILL	DOUBLE DEFL.	1" BORDER	ORBD	WHITE	E.H. PRICE 520
TO-1	TRANSFER GRILL	FIXED BAR	1" BORDER	ORBD	WHITE	E.H. PRICE 530
CTG-1	CEILING GRILLE	FIXED BAR	SURFACE	ORBD	WHITE	E.H. PRICE 530
WL-1	WALL LOUVER	FIXED BAR	6" DEEP	ORBD	MILL	RUSKIN ELF637SD
WL-2	WALL LOUVER	FIXED BAR	DRAINABLE	ORBD	MILL	GREENHECK EHW-201
			2" DEEP			SIZE: 22X10

OBD = OPPOSED BLADE DAMPER
MVD = MANUAL VOLUME DAMPER



- ### HVAC KEY NOTES:
- 4" EXHAUST DUCT FROM BATHROOM EXHAUST FAN TO APPROVED DISCHARGE CAP WITH INTEGRAL BACK DRAFT DAMPER. MAINTAIN 3FT MIN. CLEARANCE TO BUILDING OPENINGS, AND 10' MIN. FROM MECHANICAL FRESH AIR INTAKES. SEE 3/M4.0 FOR ROOF DISCHARGE DETAIL.
 - HOOD DRAWINGS (H-1 - H-5) FOR ADDITIONAL INFORMATION.
 - SEE SHEET M4.2 FOR KITCHEN HOOD SECTIONS
 - DISHWASHER: TYPE II HOOD AND EXHAUST SYSTEM. USE ALUMINUM DUCTWORK.
 - 6"Ø SHEETMETAL EXHAUST DUCT IN SOFFIT TO APPROVED SOFFIT CAP WITH BACKDRAFT DAMPER.
 - 8" EXHAUST DUCT TO APPROVED DISCHARGE CAP WITH INTEGRAL BACK DRAFT DAMPER. MAINTAIN 3FT MIN. CLEARANCE TO ALL OPENINGS. SEE 3/M4.0 FOR ROOF DISCHARGE DETAIL.
 - 7"Ø RANGE EXHAUST DUCT TO APPROVED CAP. PROVIDE UL LISTED FIRE CAULKING AT RATED MEMBRANE PENETRATIONS.
 - OUTDOOR COOLER/ FREEZER UNITS. ROUTE REFRIGERATION LINES UNDER SLAB IN 6" CONDUIT WITH LONG SWEEPS.
 - INSTALL ATTIC FANS (EF-9) NEAR ROOF PEAK, OPPOSITE OF MAIN PARKING.
 - 8" EXHAUST DUCT FROM EXHAUST FAN TO APPROVED DISCHARGE CAP WITH INTEGRAL BACK DRAFT DAMPER. MAINTAIN 3FT MIN. CLEARANCE TO ALL OPENINGS. SEE 3/M4.0 FOR ROOF DISCHARGE DETAIL.
 - LOCATION OF FUTURE DOOR
 - MECHANICAL SHAFT COORDINATE WITH ARCHITECTURAL AND STRUCTURAL. SEE DETAILS 8/A8.8 AND 2/S2.5.
 - SPLIT SYSTEM EVAPORATORS. SEE MECH. SPECIFICATIONS
 - FILTER RETURN GRILLE FOR T-BAR INSTALLATION.
 - LAUNDRY MAKE UP AIR -SEE DETAIL 5/M4.0
 - ROUTE DRAIN OVER AND DOWN IN WALL. DAYLIGHT INTO JANITOR SINK.
 - NOT USED.
 - 8x8 EXHAUST DUCT TO APPROVED CAP.
 - ROUTE ALL DUCTWORK UNDER MECHANICAL WELL INTO ATTIC SPACE.
 - SEE SHEETS SMOKE CONTROL SHEETS SC1.1, 1.2 1.3, 1.4 AND SC2.1 FOR ATRIUM SMOKE EXHAUST
 - COORDINATE DUCT ROUTING CLOSELY W/ STRUCTURAL. NOTIFY ARCHITECT IF CONFLICTS OCCUR. TYPICAL FOR ALL AREAS OF BUILDING.
 - W/ FD AT TOP OF SHAFT
 - DRYER VENT. (4" MIN. MATCH DRYER DISCHARGE) EXHAUST DUCT TO APPROVED ROOF CAP WITH INTEGRAL BACK DRAFT DAMPER.
 - MOUNT PTAC UNIT 6" ABOVE OUTSIDE ROOF LINE. PROVIDE REMOTE THERMOSTAT OR REMOTE CONTROLLER WHERE MANUFACTURER EQUIPMENT HAS NO OPTION FOR REMOTE THERMOSTAT.
 - WATER HEATER VENTING UP. PROVIDE 3" PVC FOR VENT AND 3" PVC FOR COMBUSTION AIR. SEE DETAILS 1/M2.2 AND 14/M4.0
 - DRYER VENT. 4" EXHAUST DUCT TO IN-O-VATE DRYER BOX AT WALL PENETRATION. PROVIDE UL LISTED RATED SEAL AT MEMBRANE PENETRATIONS. SEE SHEET M4.0 FOR DRYER DETAILS.
 - PROVIDE CONDENSATE LINE FOR FUTURE THRU-WALL PTAC UNITS IN "C" UNIT SPARE BEDROOMS.

SEE DETAILS 8/M2.1, 9/M2.1, AND 9/M4.0 FOR ALLOWABLE BORING / NOTCHING OF MEMBERS.



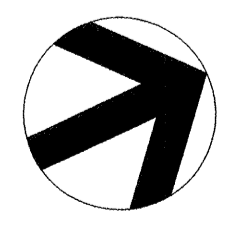
lenity architecture
3150 Lettie Court, SE, Salem, Oregon 97301
P: 503.599.1090 F: 503.599.0585
w@lenityarchitecture.com

COLSON AND COLSON GENERAL CONTRACTOR, INC.
2280 MICHURST STREET, SUITE 200
SALEM, OREGON, 97302
PHONE (503) 586-7401

PORTLAND RETIREMENT RESIDENCE
802 OCEAN AVE. PORTLAND, MAINE 04103

WING 'C' HVAC PLAN

DATE: 8/28/2015
REVISED DATE:
1 9/22/2015
2 2/2/2016
3 7/18/2016
SHEET M3.7



WING 'C' HVAC PLAN
SCALE: 1/8"=1'-0"