

**HVAC KEY NOTES:**

- 1 4" EXHAUST DUCT FROM BATHROOM EXHAUST FAN TO APPROVED DISCHARGE CAP WITH INTEGRAL BACK DRAFT DAMPER. MAINTAIN 3FT MIN. CLEARANCE TO BUILDING OPENINGS, AND 10' MIN. FROM MECHANICAL FRESH AIR INTAKES. SEE 3/M4.0 FOR ROOF DISCHARGE DETAIL.
- 2 HOOD DRAWINGS (H-1 - H-5) FOR ADDITIONAL INFORMATION.
- 3 SEE SHEET M4.2 FOR KITCHEN HOOD SECTIONS
- 4 DISHWASHER: TYPE II HOOD AND EXHAUST SYSTEM. USE ALUMINUM DUCTWORK
- 5 6"Ø SHEETMETAL EXHAUST DUCT IN SOFFIT TO APPROVED SOFFIT CAP WITH BACKDRAFT DAMPER.
- 6 6" EXHAUST DUCT TO APPROVED DISCHARGE CAP WITH INTEGRAL BACK DRAFT DAMPER. MAINTAIN 3FT MIN. CLEARANCE TO ALL OPENINGS. SEE 3/M4.0 FOR ROOF DISCHARGE DETAIL.
- 7 7"Ø RANGE EXHAUST DUCT TO APPROVED CAP. PROVIDE UL LISTED FIRE CAULKING AT RATED MEMBRANE PENETRATIONS.
- 8 OUTDOOR COOLER/ FREEZER UNITS. ROUTE REFRIGERATION LINES UNDER SLAB IN 6" CONDUIT WITH LONG SWEEPS.
- 9 INSTALL ATTIC FANS (EF-9) NEAR ROOF PEAK, OPPOSITE OF MAIN PARKING.
- 10 8" EXHAUST DUCT FROM EXHAUST FAN TO APPROVED DISCHARGE CAP WITH INTEGRAL BACK DRAFT DAMPER. MAINTAIN 3FT MIN. CLEARANCE TO ALL OPENINGS. SEE 3/M4.0 FOR ROOF DISCHARGE DETAIL.
- 11 LOCATION OF FUTURE DOOR
- 12 MECHANICAL SHAFT COORDINATE WITH ARCHITECTURAL AND STRUCTURAL. SEE DETAILS 8/A8.8 AND 2/S2.5.
- 13 SPLIT SYSTEM EVAPORATORS. SEE MECH. SPECIFICATIONS
- 14 FILTER RETURN GRILLE FOR T-BAR INSTALLATION.
- 15 LAUNDRY MAKE UP AIR - SEE DETAIL 5/M4.0
- 16 ROUTE DRAIN OVER AND DOWN IN WALL. DAYLIGHT INTO JANITOR SINK.
- 17 NOT USED.
- 18 8x8 EXHAUST DUCT TO APPROVED CAP.
- 19 ROUTE ALL DUCTWORK UNDER MECHANICAL WELL INTO ATTIC SPACE.
- 20 SEE SHEETS SMOKE CONTROL SHEETS SC1.1, 1.2 1.3, 1.4 AND SC2.1 FOR ATRIUM SMOKE EXHAUST
- 21 COORDINATE DUCT ROUTING CLOSELY W/ STRUCTURAL. NOTIFY ARCHITECT IF CONFLICTS OCCUR. TYPICAL FOR ALL AREAS OF BUILDING.
- 22 W/ FD AT TOP OF SHAFT
- 23 DRYER VENT, (4" MIN., MATCH DRYER DISCHARGE) EXHAUST DUCT TO APPROVED ROOF CAP WITH INTEGRAL BACK DRAFT DAMPER.
- 24 MOUNT PTAC UNIT 6" ABOVE OUTSIDE ROOF LINE. PROVIDE REMOTE THERMOSTAT OR REMOTE CONTROLLER WHERE MANUFACTURER EQUIPMENT HAS NO OPTION FOR REMOTE THERMOSTAT.
- 25 WATER HEATER VENTING UP. PROVIDE 3" PVC FOR VENT AND 3" PVC FOR COMBUSTION AIR. SEE DETAILS 1/M2.2 AND 14/M4.0.
- 26 DRYER VENT, 4" EXHAUST DUCT TO IN-O-VATE DRYER BOX AT WALL PENETRATION. PROVIDE UL LISTED RATED SEAL AT MEMBRANE PENETRATIONS. SEE SHEET 14/M4.0 FOR DRYER DETAILS.
- 27 PROVIDE CONDENSATE LINE FOR FUTURE THRU-WALL PTAC UNITS IN "C" UNIT SPARE BEDROOMS.

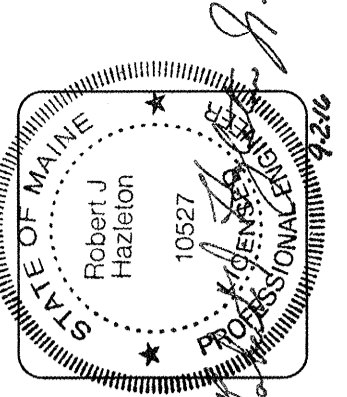
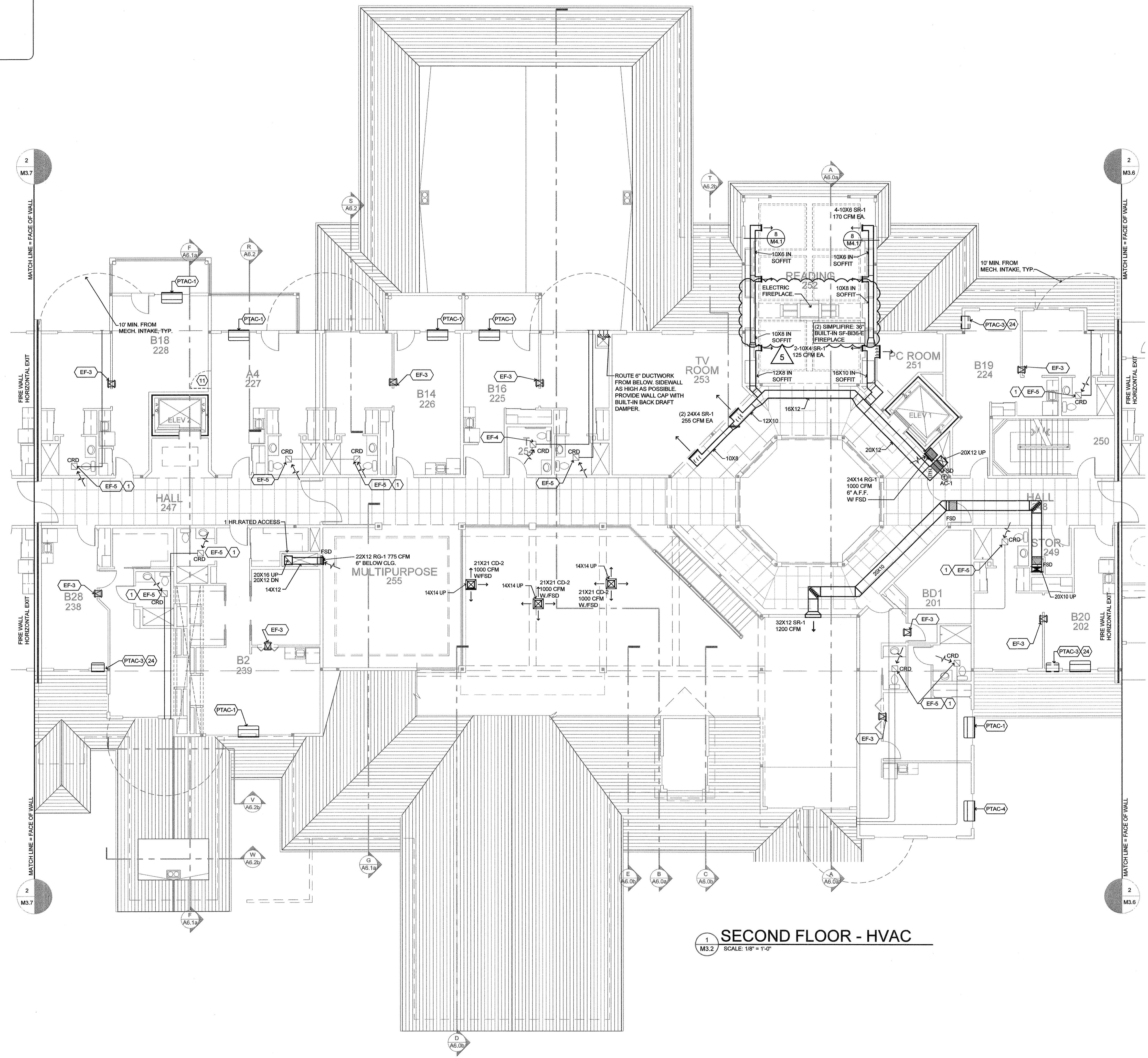
**DIFFUSER, REGISTER AND GRILLE SCHEDULE**

SYM	TYPE	FACE	FRAME	DAMPER	FINISH	MODEL NO.
CD-1	CEILING DIFFUSER	LOUVERED	T-BAR	MVD	WHITE	E.H. PRICE SMD
CD-2	CEILING DIFFUSER	LOUVERED	SURFACE	CRD	WHITE	E.H. PRICE SMD
CD-3	CEILING SUPPLY/EXHAUST	LOUVERED	SURFACE	N/A	WHITE	ALDES "CAR"
CRG-1	CEILING GRILLE	PERFORATED	T-BAR	MVD	WHITE	E.H. PRICE PDR
CRG-2	CEILING GRILLE	PERFORATED	SURFACE	CRD	WHITE	E.H. PRICE PDR
CRG-3	CEILING FILTER GRILLE	PERFORATED	T-BAR	MVD	WHITE	E.H. PRICE 10FP
RG-1	SIDEWALL GRILLE	FIXED BAR	CRD	CRD	WHITE	E.H. PRICE 530
SR-1	SIDEWALL SUPPLY GRILLE	DOUBLE DEFL.	1" BORDER	CRD	WHITE	E.H. PRICE 520
TG-1	TRANSFER GRILLE	FIXED BAR	1" BORDER	CRD	WHITE	E.H. PRICE 530
CTG-1	CEILING GRILLE	FIXED BAR	SURFACE	CRD	WHITE	E.H. PRICE 530
WL-1	WALL LOUVER	FIXED BAR	DRAINABLE	CRD	MILL	RUSKIN ELF83750X
WL-2	WALL LOUVER	FIXED BAR	DRAINABLE	2" DEEP	MILL	GREENHECK EHH-201

OBD = OPPOSED BLADE DAMPER  
MVD = MANUAL VOLUME DAMPER

SEE DETAILS 8/M2.1, 9/M2.1, AND 9/M4.0 FOR ALLOWABLE BORING / NOTCHING OF MEMBERS.

**1 SECOND FLOOR - HVAC**  
SCALE: 1/8" = 1'-0"



**lenity architecture**  
370 Kennebec Street, Portland, ME 04103  
Phone: (503) 999-1090

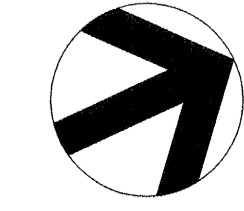
**COLSON AND COLSON**  
GENERAL CONTRACTOR, INC.  
2280 McGILCHRIST STREET SE, SUITE 200  
SALEM, OREGON, 97302  
PHONE (503) 586-7401

**PORTLAND**  
RETIREMENT RESIDENCE  
802 OCEAN AVE. PORTLAND, MAINE 04103

**SECOND FLOOR**  
CORE HVAC  
PLAN

DATE	8/28/2015
REVISED DATE	9/22/2015
	2/2/2016
	7/18/2016

**SHEET**  
M3.2



11/15/2015 1:20 PM lenity - portland-retirement-residence-2015-11-15.rvt 11/15/2015 1:20 PM lenity - portland-retirement-residence-2015-11-15.rvt 11/15/2015 1:20 PM lenity - portland-retirement-residence-2015-11-15.rvt