

lenity
architecture

3150 Lettis Court SE, Salem, Oregon 97301
www.lenityarchitecture.com
P 503 399 1090 F 503 399 0585

COLSON AND COLSON
GENERAL CONTRACTOR, INC.
2280 McGLICHRIST STREET SE, SUITE 200
SALEM, OREGON, 97302
PHONE (503) 586-7401

PORTLAND
RETIREMENT RESIDENCE
802 OCEAN AVE. PORTLAND, MAINE 04103

WING 'C'
SCHEMATIC
LOW VOLTAGE

DATE
8/28/2015

REVISED DATE
9/22/2015
2/2/2016
7/18/2016

SHEET
E3.6

REQUIRED UNITS WITH VISIBLE ALARMS		
FLOOR	# OF F-1 UNITS	
1ST FLOOR (INCLUDING MANAGER AND CO-MANAGER)	40	
2ND FLOOR	44	
3RD FLOOR	48	
TOTAL	132	
NUMBER OF SLEEPING UNITS WITH VISIBLE ALARMS REQUIRED PER IFC TABLE 907.6.2.3.3		
UNIT NUMBERS		
153 (MGR)	126 (C4)	411 (B24)
184 (CO-MGR)	203 (A17)	
101 (A17)	212 (B24)	
109 (B24)	303 (A17)	
120 (A17)	311 (B24)	
124 (A18)	403 (A17)	

LOW VOLTAGE LEGEND

- DOOR HOLDERS
 - DATA PORT (X = QUANTITY OF OUTLETS)
 - COMMON AREA TELEPHONE LOCATIONS
 - COMMON AREA CATV LOCATIONS
 - CEILING MOUNTED SPEAKER
 - SPEAKER VOLUME CONTROL
 - HUB MAX
 - FIRE SMOKE DAMPERS - SEE MECHANICAL
 - AREA OF RESCUE REMOTE CALL STATION
 - MASTER AREA OF RESCUE CALL STATION PANEL - RESCUE STAFF INTERFACE
 - EMERGENCY PULL SWITCH
 - P.O.E. NETWORK CAMERA
- FIRE ALARM LEGEND**
- FIRE ALARM CONTROL PANEL
 - REMOTE ANNUNCIATOR
 - ADDRESSABLE RELAY MODULE
 - ADDRESSABLE MANUAL PULL STATION
 - ADDRESSABLE PHOTOELECTRIC SMOKE DETECTOR
 - ADDRESSABLE COMBINATION PHOTOELECTRIC SMOKE AND CARBON MONOXIDE DETECTOR WITH SOUNDER BASE.
 - ADDRESSABLE HEAT DETECTOR
 - DUCT TYPE SMOKE DETECTOR IN HVAC RETURN DUCT
 - MAGNETIC DOOR HOLDER
 - TAMPER SWITCH (PIV, BUTTERFLY, OR OS&Y)
 - WATERFLOW SWITCH
 - LOW AIR PRESSURE SWITCH
 - WATERFLOW PRESSURE SWITCH
 - KITCHEN HOOD SUPPRESSION SYSTEM
 - FIRE SMOKE DAMPER
 - HORN/STROBE VARIABLE CANDELA WHITE WALL MOUNT
 - VOICE EVACUATION SPEAKER/STROBE
 - STROBE VARIABLE CANDELA WHITE WALL MOUNT
 - LOW FREQUENCY MINI HORN WHITE WALL MOUNT
 - LOW FREQUENCY ADA HORN/STROBE HI-INTENSITY

KEY NOTES:

- 1 ELECTRONIC STRIKE POWERED BY TRANSFORMER (VAC), CONNECTED TO RELAY W/ 24 VDC TO FIRE ALARM DOOR MAGNET CIRCUIT BY ELECTRICAL.
- 2 LOCATION OF FUTURE DOOR (DO NOT WIRE IN THIS LOCATION).
- 3 PROVIDE WIRE TO THESE DOORS FOR DOOR MONITORING DEVICE. HOME RUN BACK TO OFFICE W/ 20'-0" PIG TAIL ABOVE T-BAR CLG.
- 4 PROXI CARD READER LOCATION. PROVIDE STRIKE ON DOOR.
- 5 CAMERA LOCATION. PROVIDE DATA OUTLET, WITH CAT 6 CABLE BACK TO DATA CABINET. VERIFY LOCATION AND MOUNTING HEIGHT WITH OWNERS REPRESENTATIVE.
- 6 TERMINATION POINT OF VIDEO CABLES W/ 10'-0" PIG TAIL ABOVE T-BAR CEILING.
- 7 TERMINAL POINT FOR DATA DROPS.
- 8 PROVIDE CAT5E CABLE FROM OFFICE TO SECOND FLOOR CLOSET FOR TEL-TRON EQUIPMENT. TERMINATE PER TIA/EIA-568-B CONFIGURATION AT SINGLE OUTLET USING RED RJ-45 CONNECTOR AND LABEL FACEPLATE "TEL-TRON ONLY"
- 9 EVENT DISPLAY MONITOR. PROVIDE (2) CAT6 CABLES TO DATA CABINET AND (1) RGS CABLE BACK TO CATV BOARD. PROVIDE RECESSED STEEL TV BOX, ARLINGTON TV6507, OR APPROVED.
- 10 DOORBELL TO BE TIED TO CO-MANAGER AND MANAGER'S PHONE LINES THROUGH PHONE SYSTEM IN ELECTRICAL ROOM.
- 11 SMOKE DETECTOR TO ANNUNCIATE FACP ALARM, AND ACTIVATE ATRIUM SMOKE CONTROL SYSTEM.

NOTES:

LOW VOLTAGE CONTRACTOR TO NOTIFY CONTRACTOR IF ANY DOOR WHICH HAS REQUIRED DOOR MAGNET WILL NOT CLOSE FLUSH TO WALL. SEE DRAWING E4.2 FOR WIRING DETAILS.

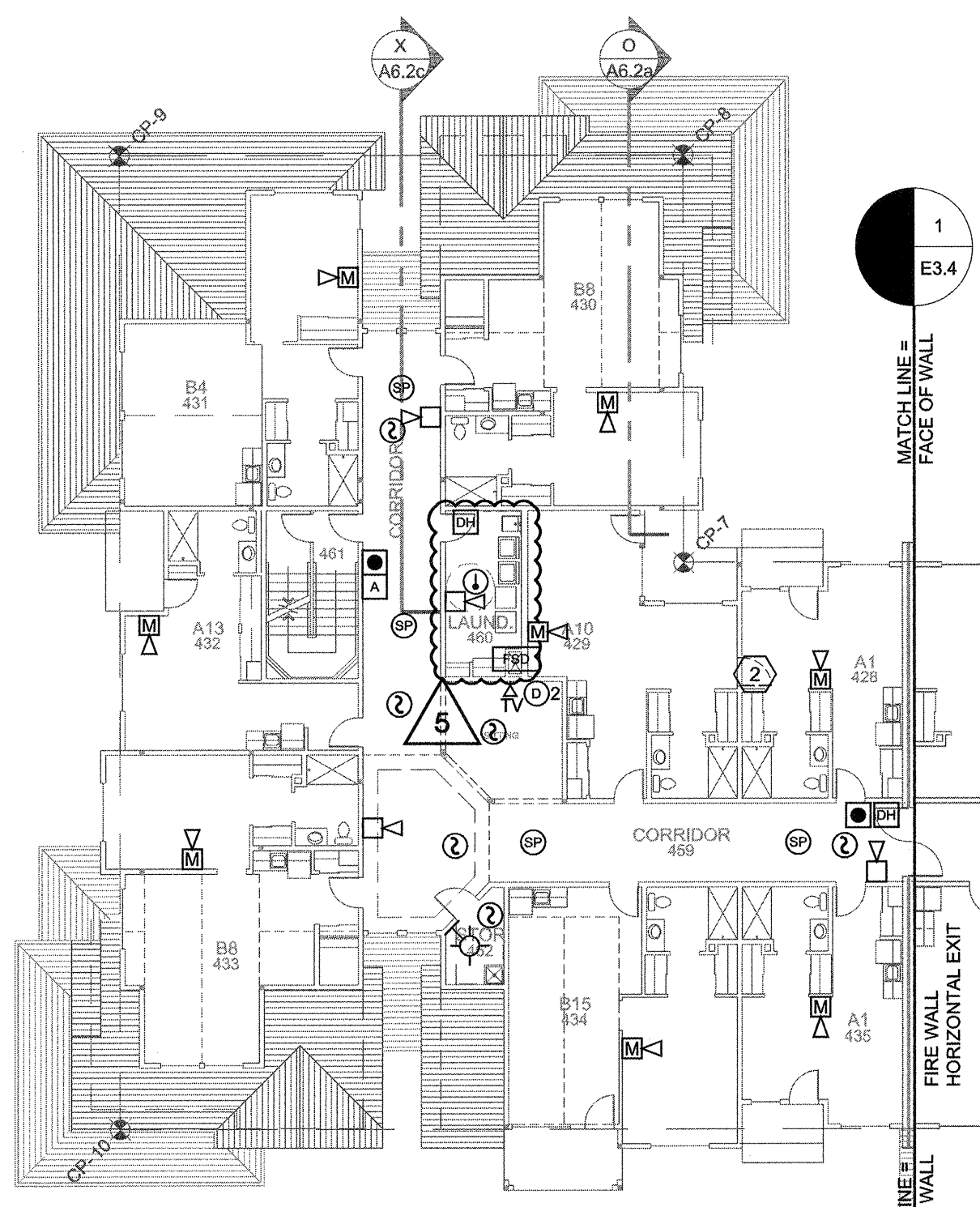
SEE DETAIL 11/E2.2b AND 14/E2.2b FOR ALLOWABLE BORING/NOTCHING OF MEMBERS.

SHOWN ONLY AS SCHEMATIC.

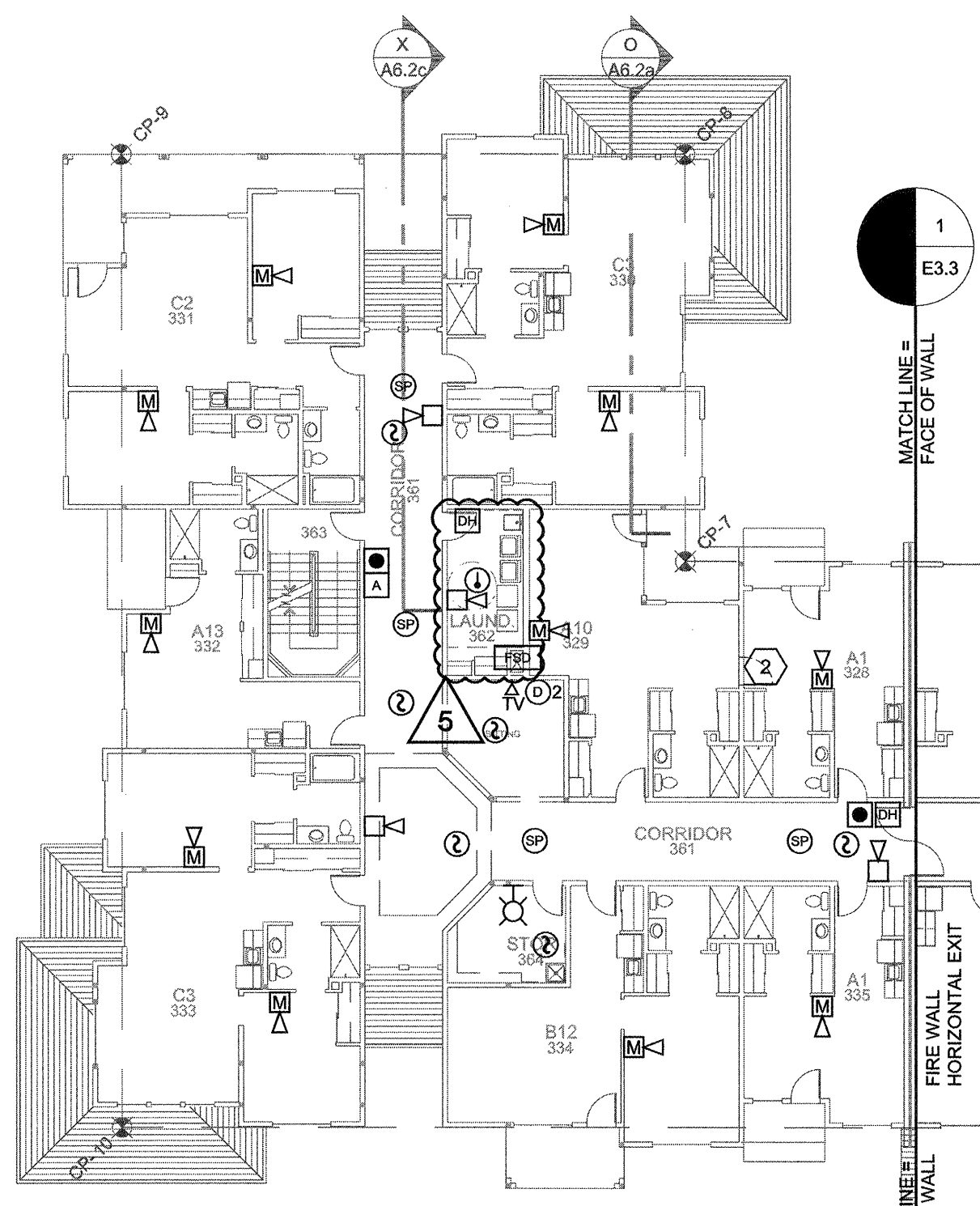
ELECTRICIAN SHALL OBTAIN ALL REQUIRED PERMITS PRIOR TO INSTALLATION

NOTE:
SMOKE DAMPERS SHALL BE CLOSED BY ACTUATION OF A SMOKE DETECTOR INSTALLED IN ACCORDANCE WITH THE FIRE CODE AND ONE OF THE FOLLOWING APPLICABLE METHODS:

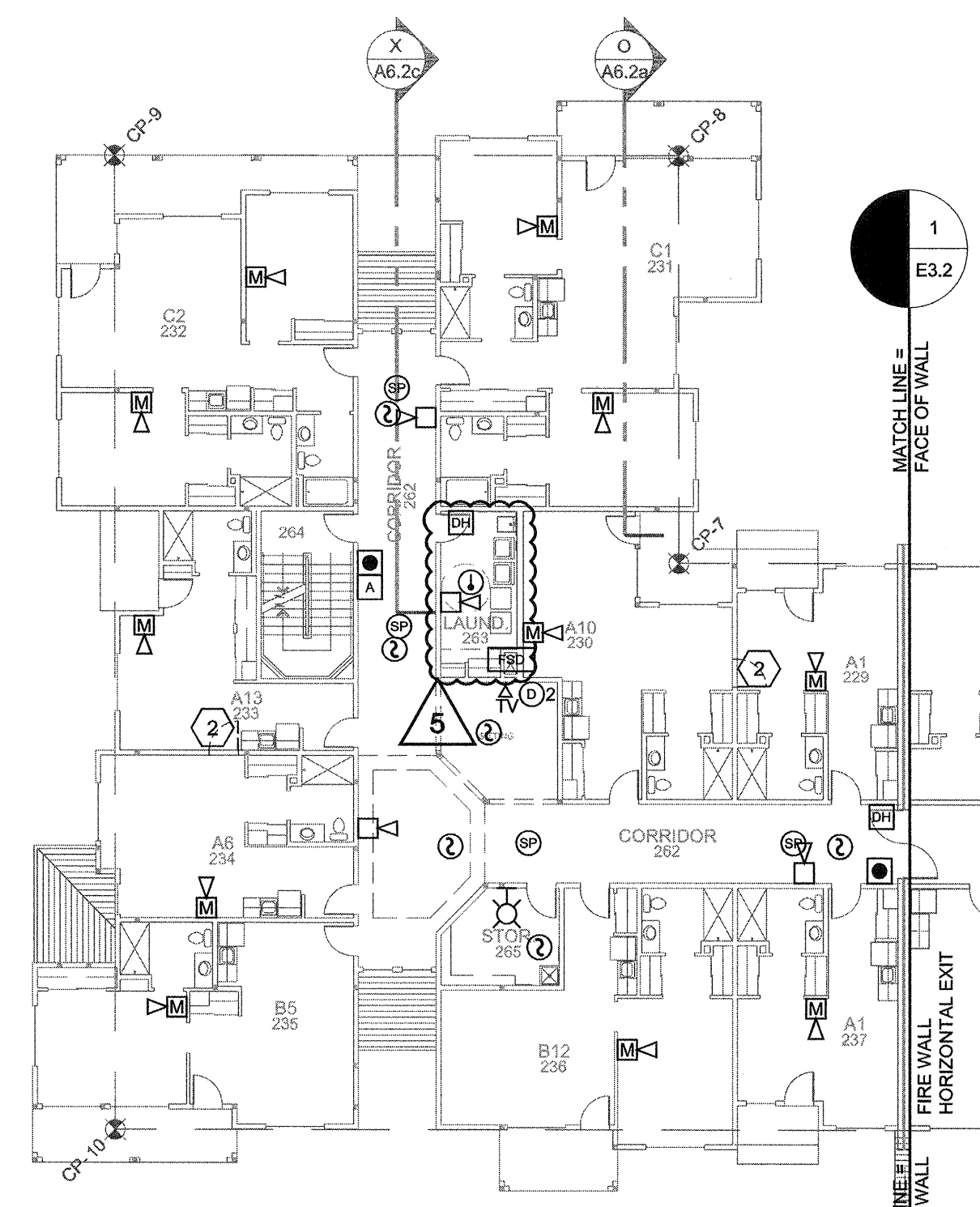
1. WHERE A DAMPER IS INSTALLED WITHIN A DUCT, A SMOKE DETECTOR SHALL BE INSTALLED IN THE DUCT WITHIN 5 FEET OF THE DAMPER WITH NO AIR OUTLETS OR INLETS BETWEEN THE DETECTOR AND THE DAMPER. THE DETECTOR SHALL BE LISTED FOR THE AIR VELOCITY, TEMPERATURE AND HUMIDITY ANTICIPATED AT THE POINT WHERE IT IS INSTALLED.
2. WHERE A DAMPER IS INSTALLED WITHIN AN UNDUCTED OPENING IN A WALL, A SPOT-TYPE DETECTOR LISTED FOR RELEASING SERVICE SHALL BE INSTALLED WITHIN 5 FEET HORIZONTALLY OF THE DAMPER.
3. WHERE A DAMPER IS INSTALLED IN A CEILING, A SPOT-TYPE DETECTOR LISTED FOR RELEASING SERVICE SHALL BE INSTALLED ON THE CEILING WITHIN 5 FEET OF THE DAMPER.
4. WHERE A DAMPER IS INSTALLED IN A CORRIDOR WALL OR CEILING, THE DAMPER MAY BE CONTROLLED BY A SMOKE-DETECTION SYSTEM INSTALLED IN THE CORRIDOR.
5. WHEN A TOTAL-COVERAGE SMOKE-DETECTION SYSTEM IS PROVIDED WITHIN ALL AREAS SERVED BY AN HVAC SYSTEM, DAMPERS MAY BE CONTROLLED BY THE SMOKE-DETECTION SYSTEM.
6. VERIFY LOCATIONS OF FSD WITH MECHANICAL DRAWINGS.



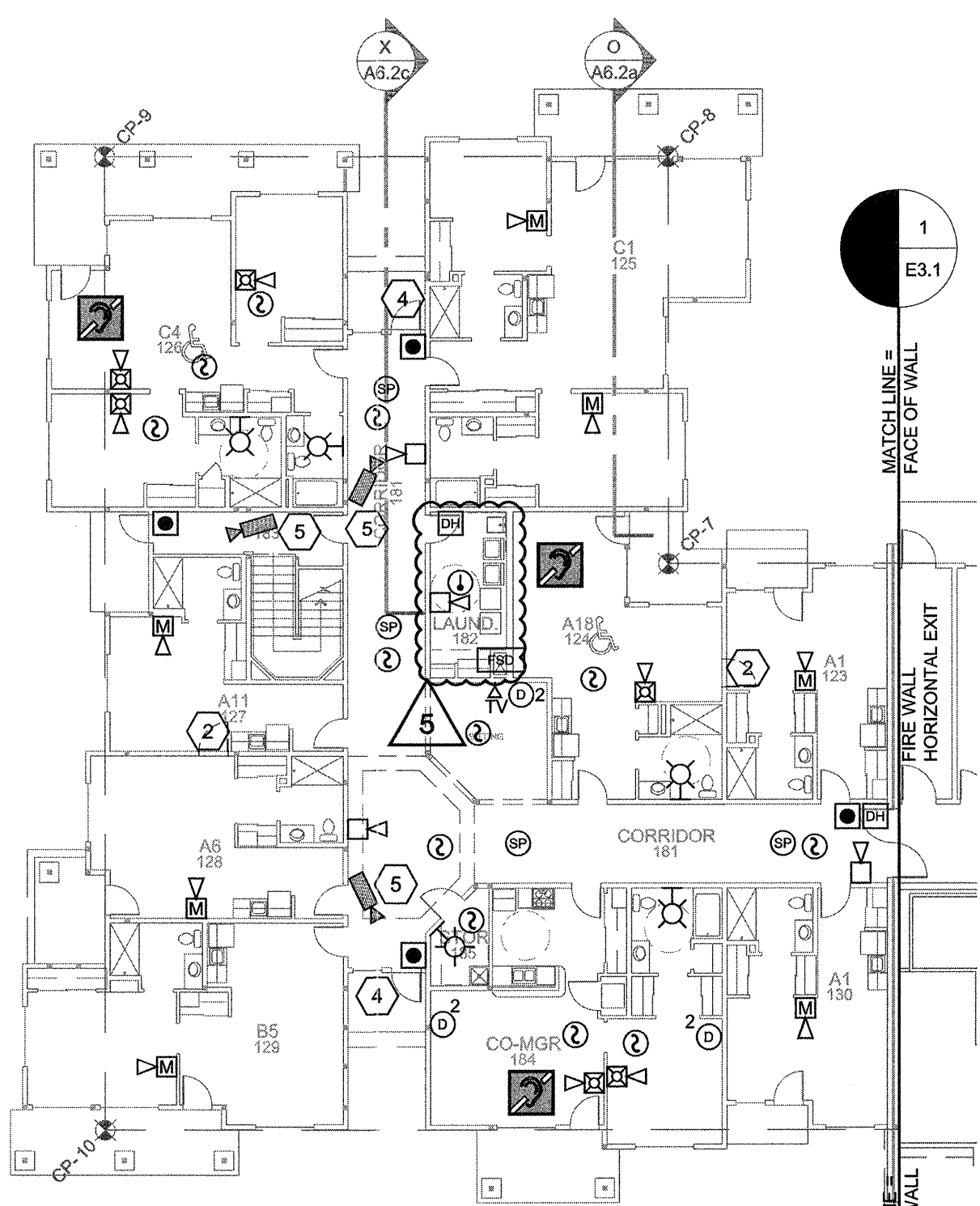
4 FOURTH FLOOR
SCHEMATIC LOW VOLTAGE
E3.6 SCALE: 1/16" = 1'-0"



3 THIRD FLOOR
SCHEMATIC LOW VOLTAGE
E3.6 SCALE: 1/16" = 1'-0"



2 SECOND FLOOR
SCHEMATIC LOW VOLTAGE
E3.6 SCALE: 1/16" = 1'-0"



1 FIRST FLOOR
SCHEMATIC LOW VOLTAGE
E3.6 SCALE: 1/16" = 1'-0"

8/28/2015 10:34 AM K:\Bldg\1445\2015\1445-2015-08-28-10-34-AM-Killburn - Bldg\1445\2015\1445-2015-08-28-10-34-AM-Killburn.dwg E3.6