

**ALLOWABLE HOLES CHART**

MINIMUM DISTANCE FROM TABLE A: 1 1/2" KNOCKOUTS AT APPROXIMATELY 12" ON-CENTER AVAILABLE IN MOST JOIST SERIES. JOISTS MAY BE ORIENTED WITH KNOCKOUTS AT TOP OR BOTTOM.

MINIMUM DISTANCE FROM TABLE B: 1 1/2" HOLE MAY BE CUT ANYWHERE IN WEB OUTSIDE OF HATCHED ZONE.

DO NOT CUT HOLES LARGER THAN 1 1/2" IN CANTILEVER.

DO NOT CUT, DRILL, OR NOTCH FLANGES.

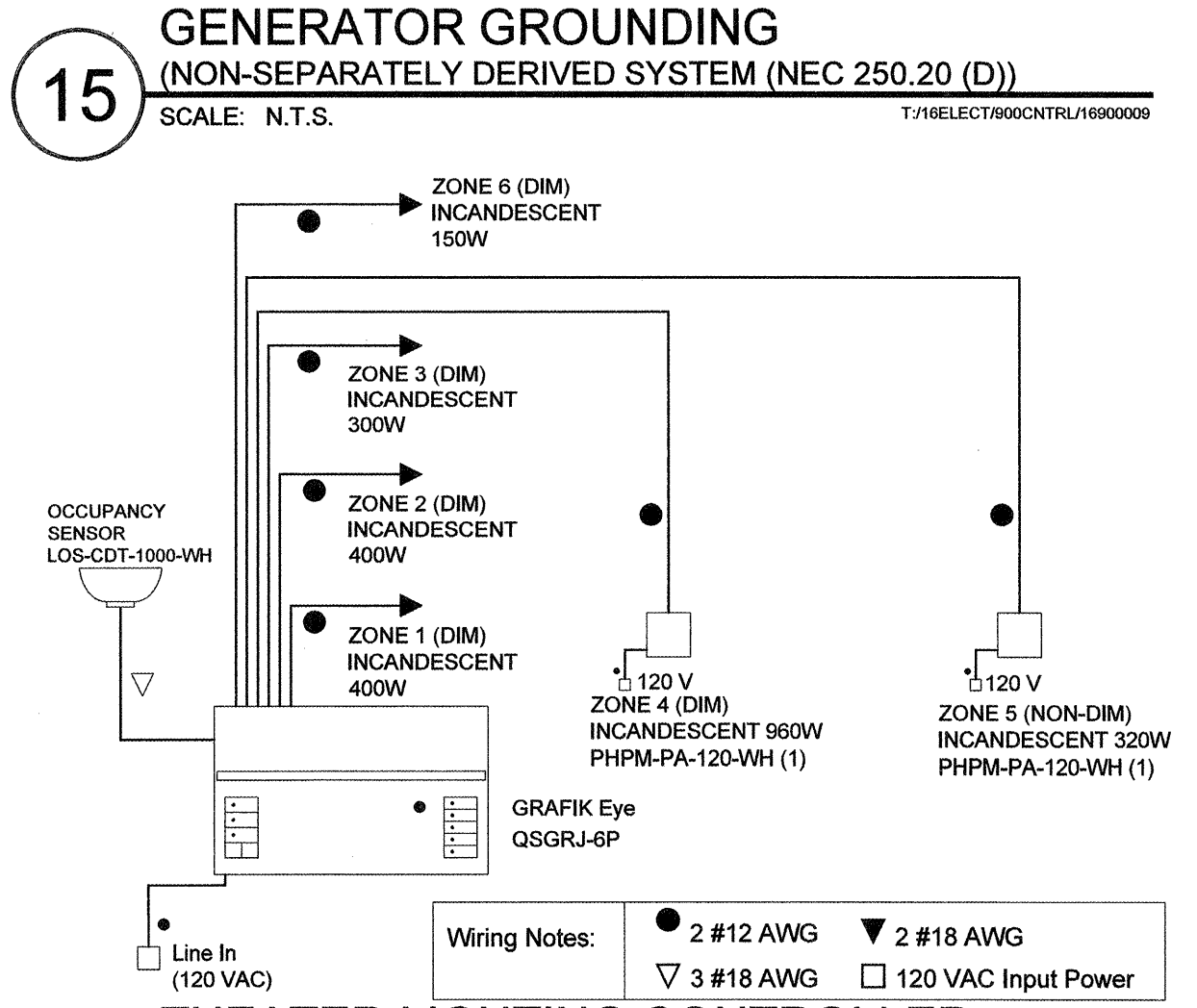
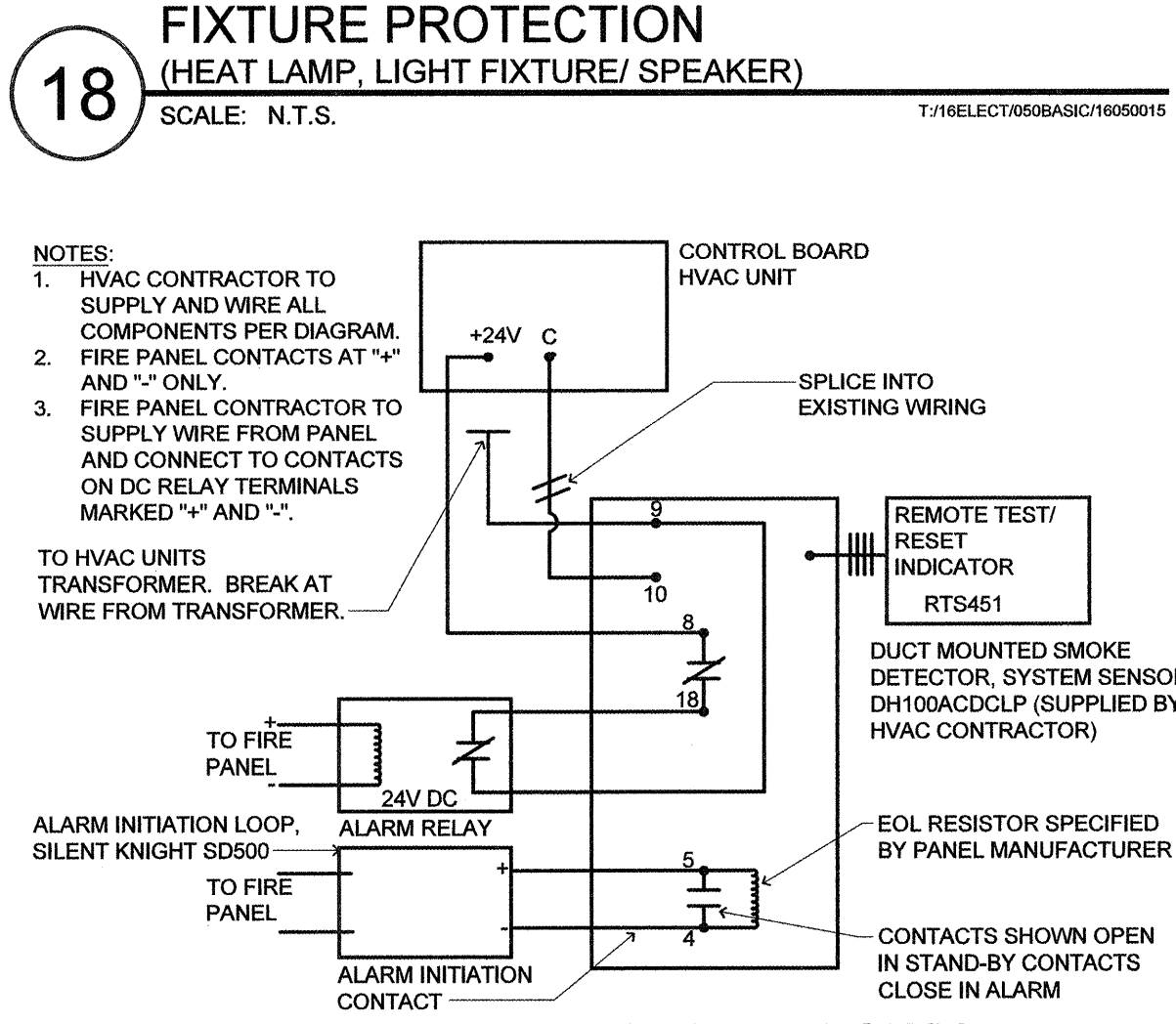
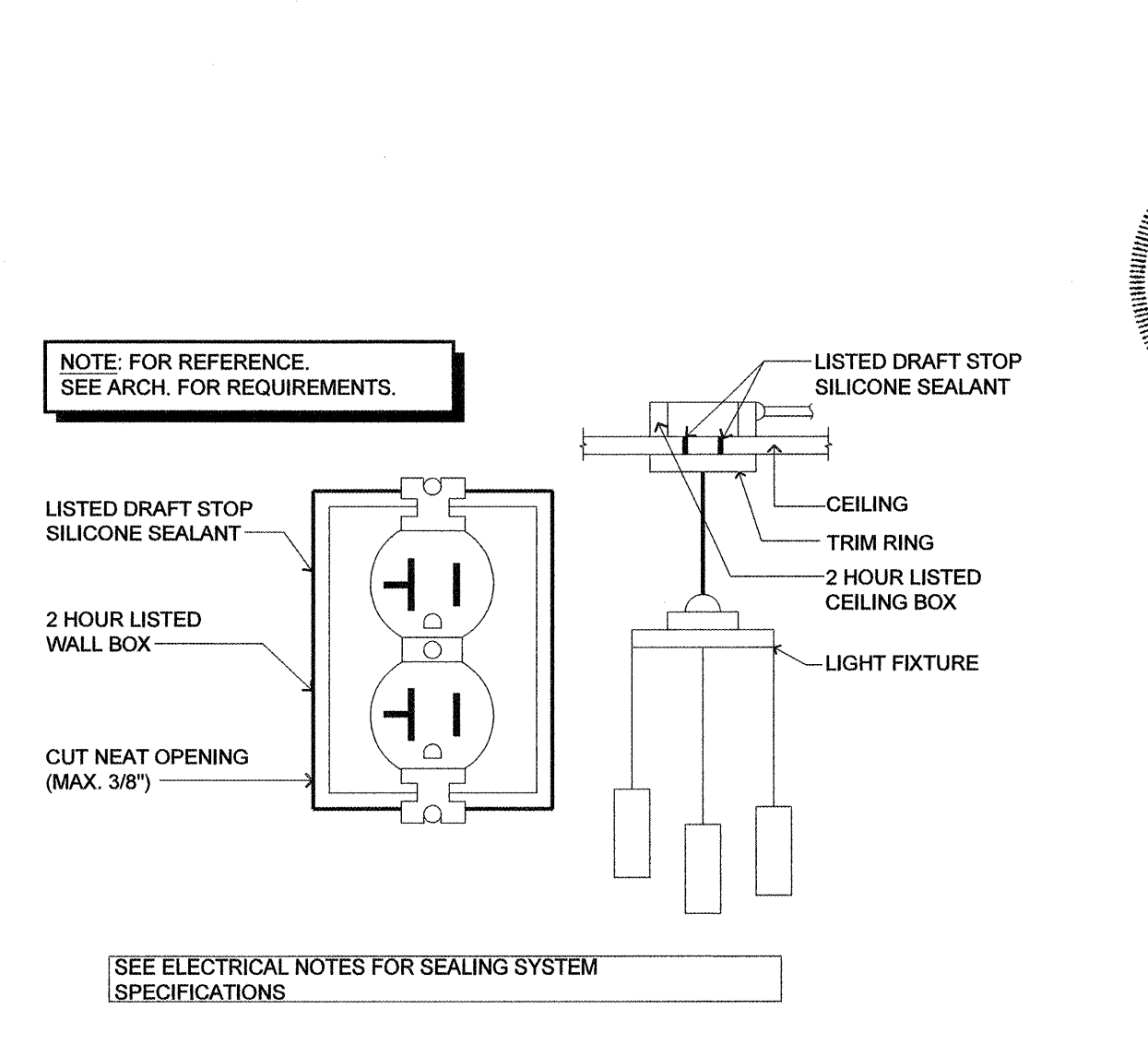
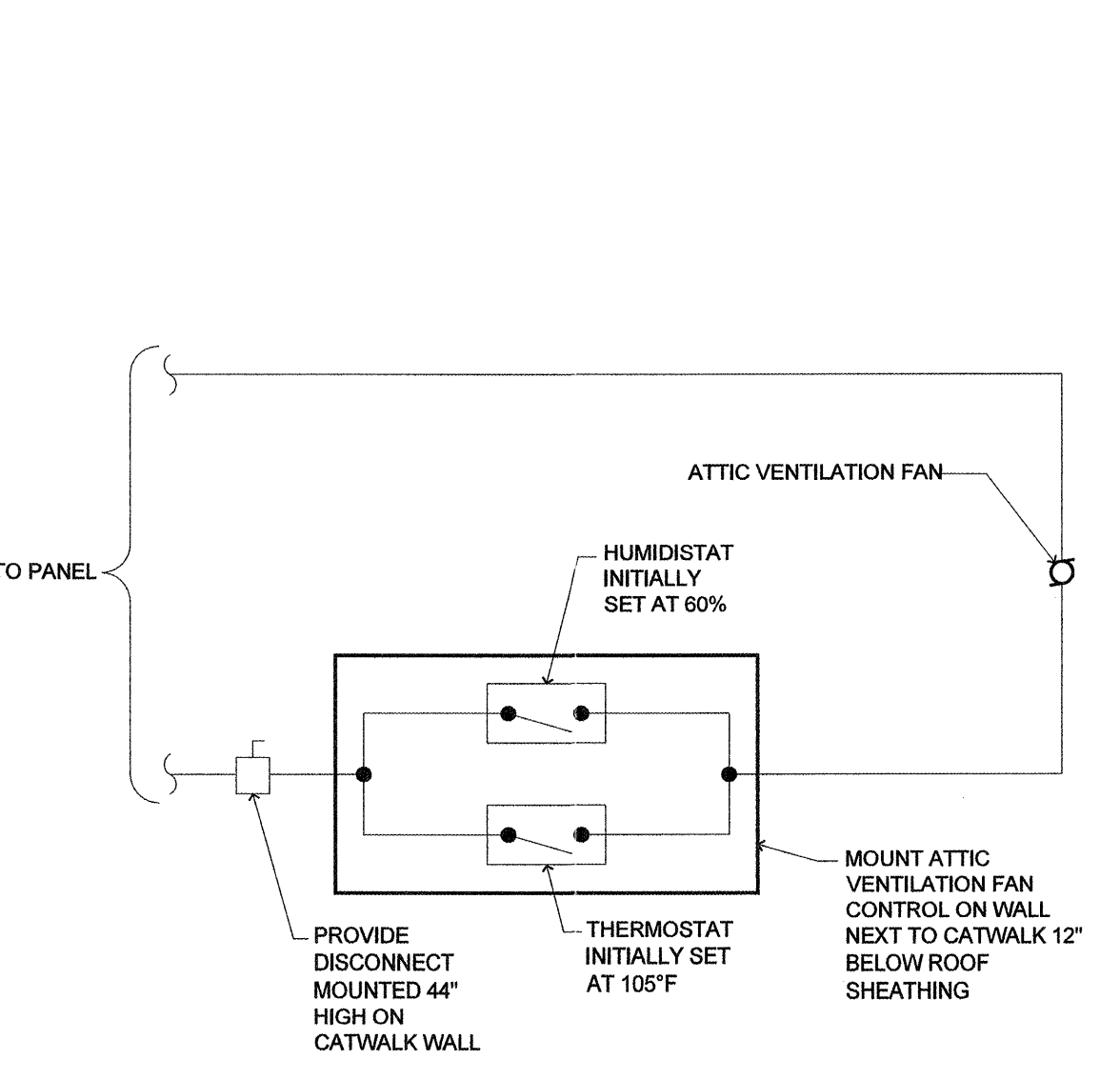
**Table A - End Support**  
Minimum distance from edge of hole to inside face of nearest end support

Joist Depth	Joist Series	Round Hole Size									
		2"	4"	6"	8"	10"	12"	14"	16"	18"	20"
9 1/2"	145 / 165	1'-6"	3'-0"	5'-0"	-	-	-	-	-	-	-
18"	190 / 190H	1'-0"	1'-0"	2'-6"	5'-0"	7'-0"	9'-6"	12'-6"	17'-0"	-	-

**Table B - Intermediate or Cantilever Support**  
Minimum distance from edge of hole to inside face of nearest intermediate or cantilever support

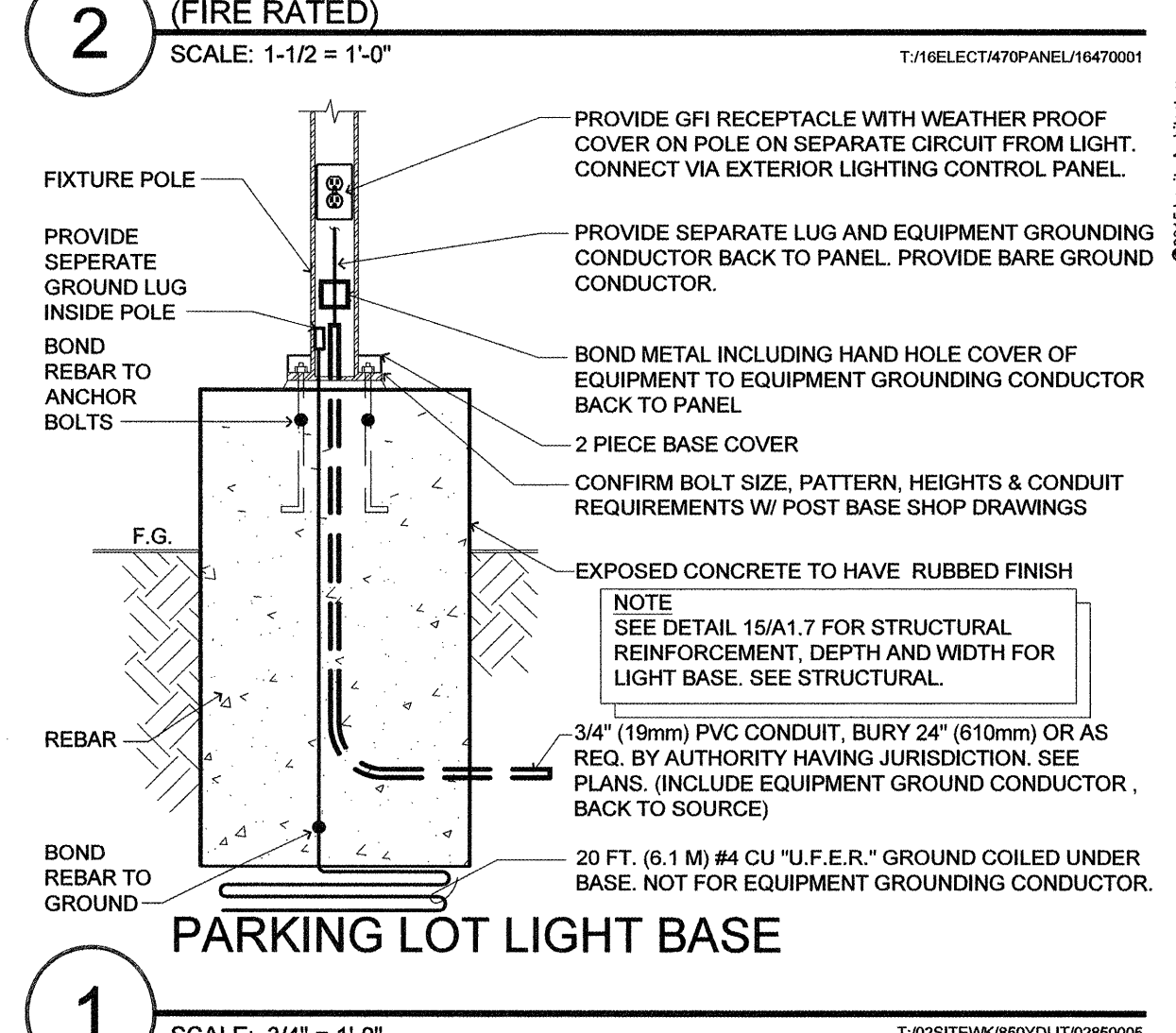
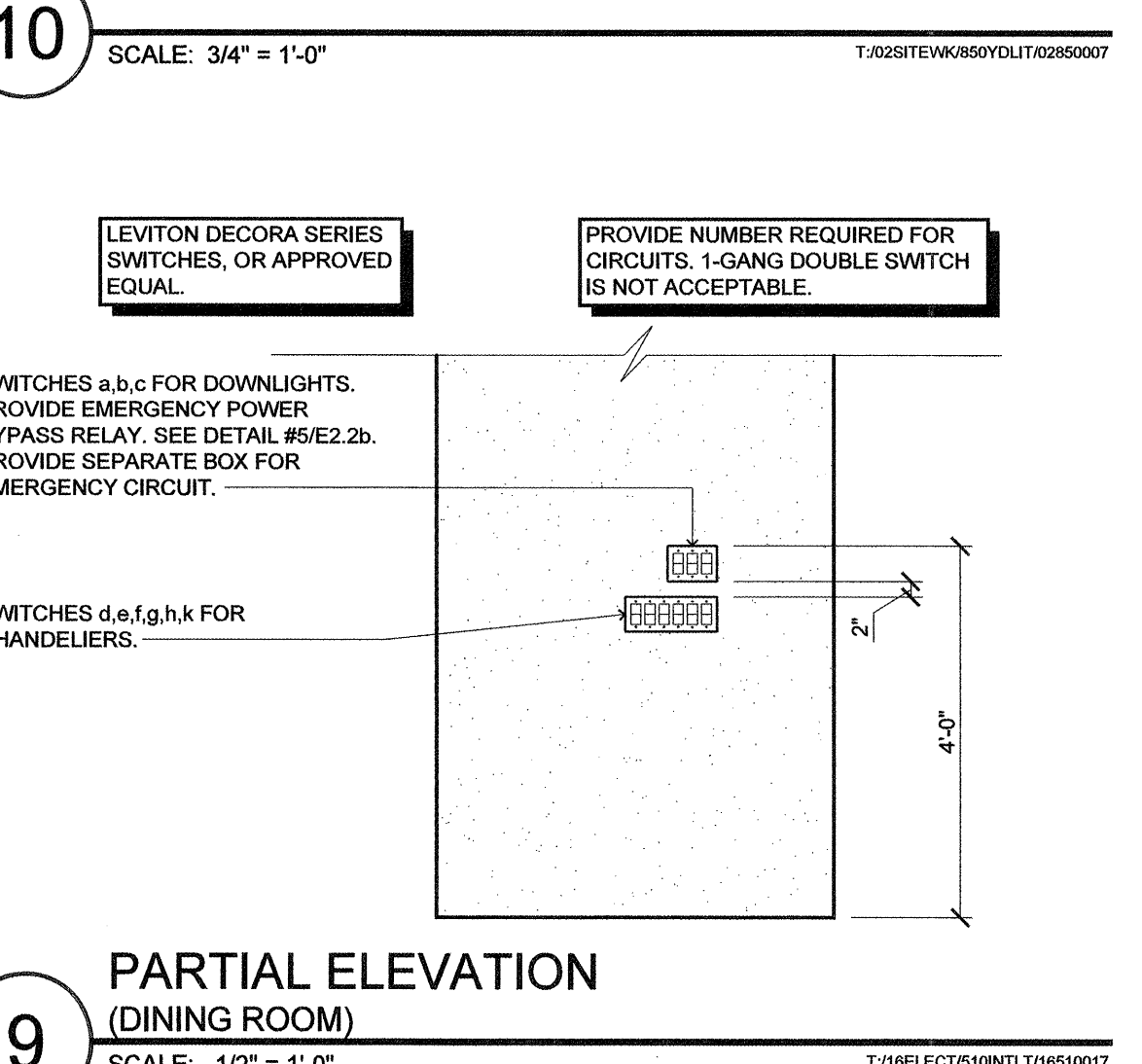
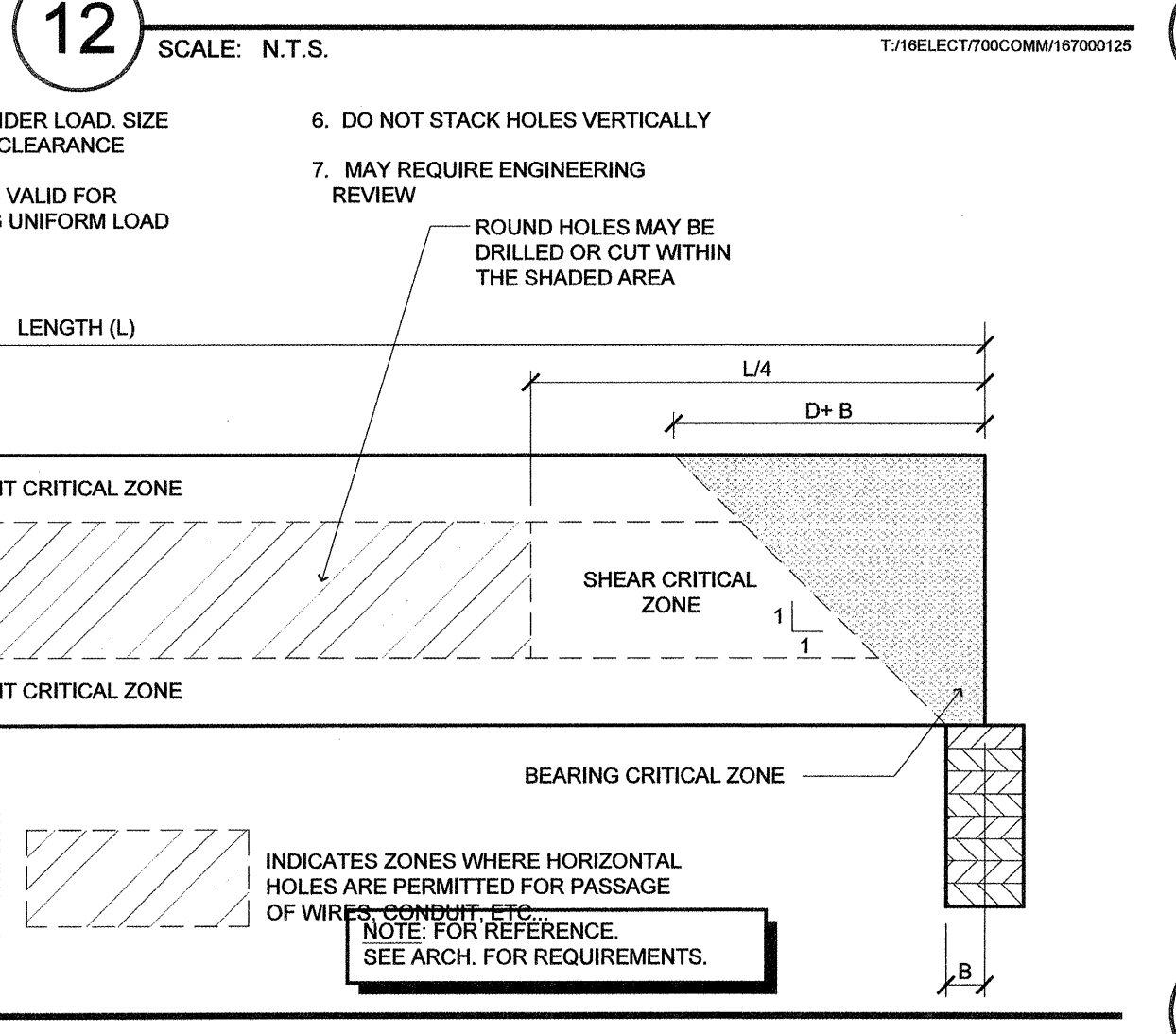
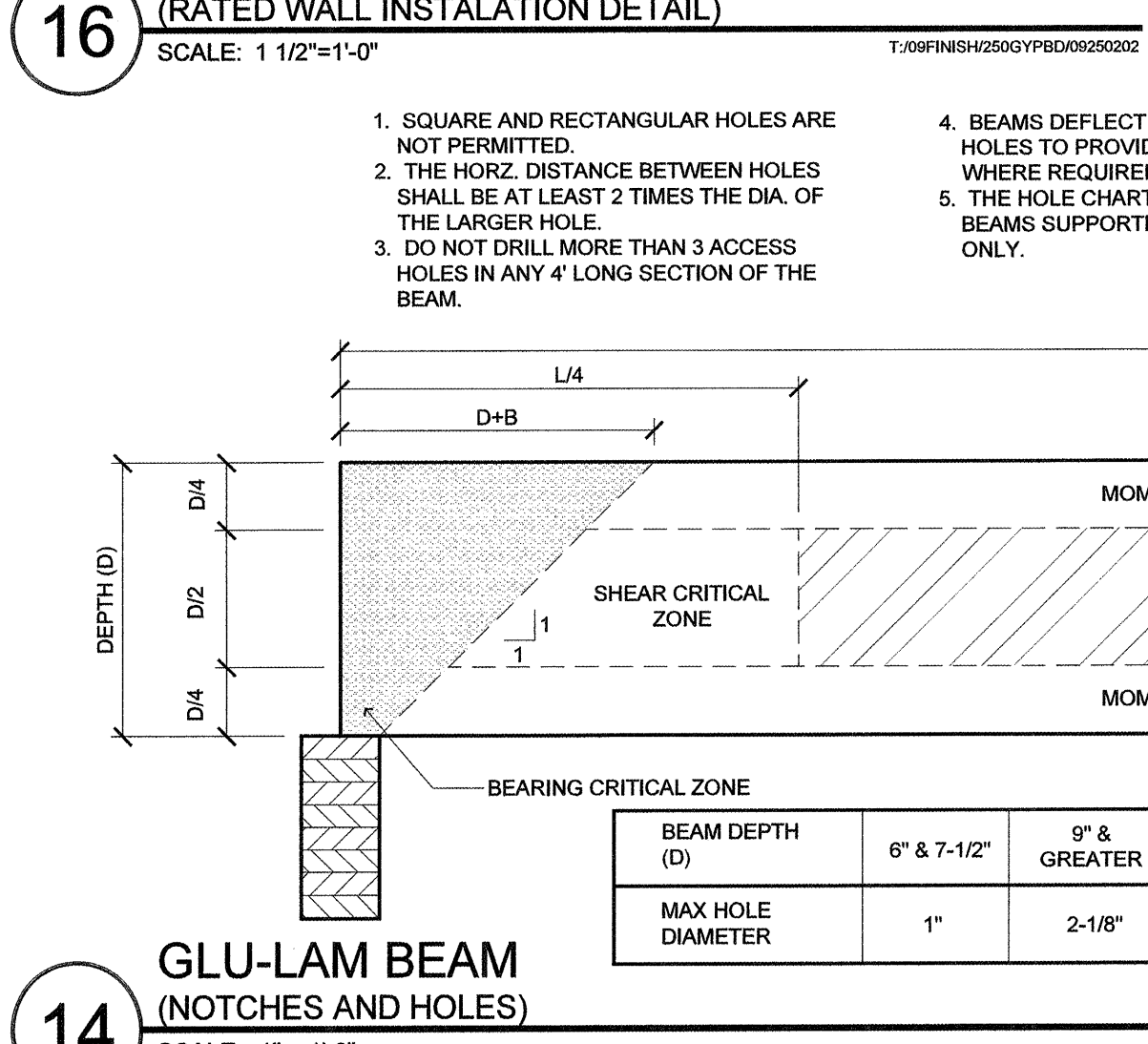
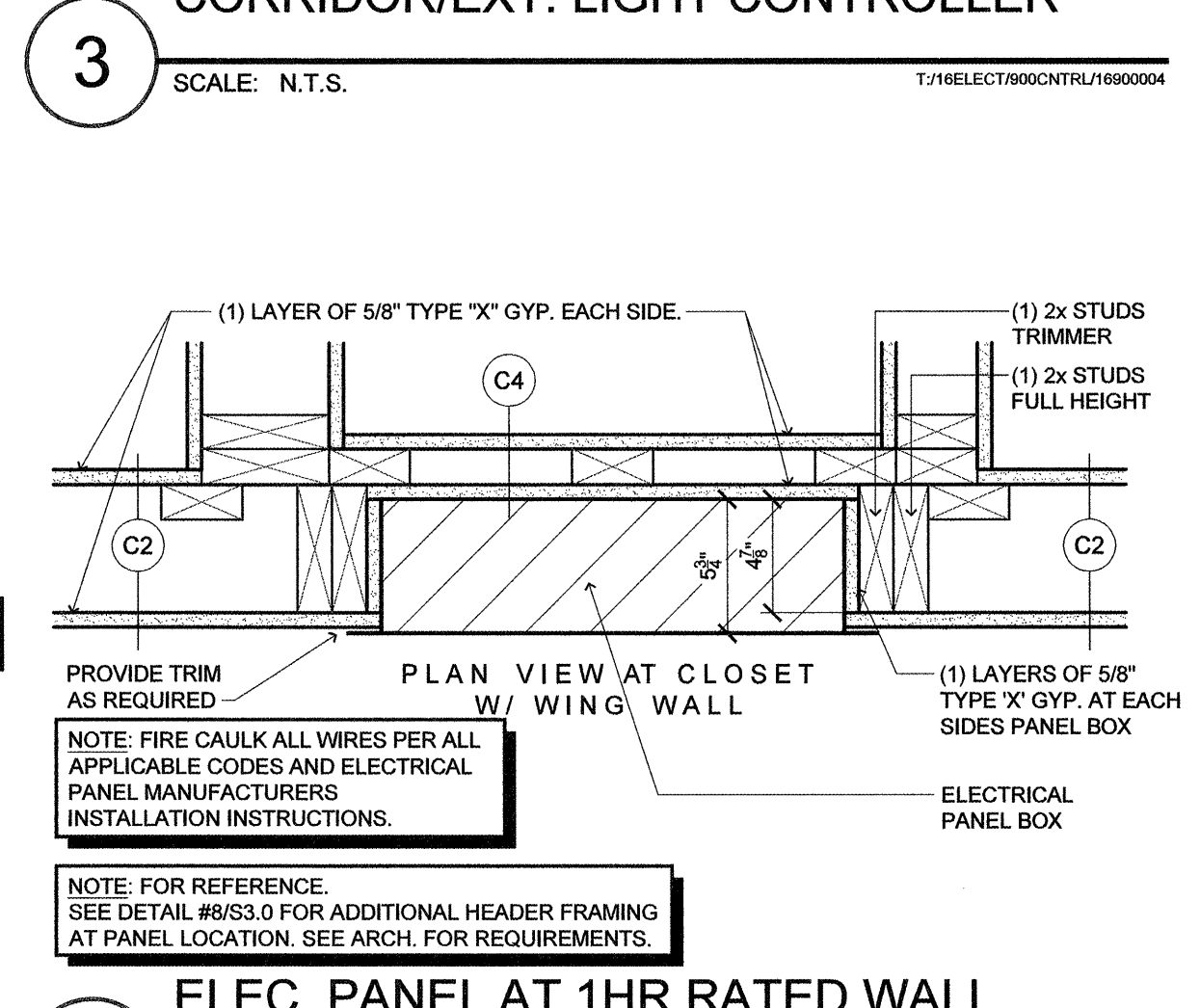
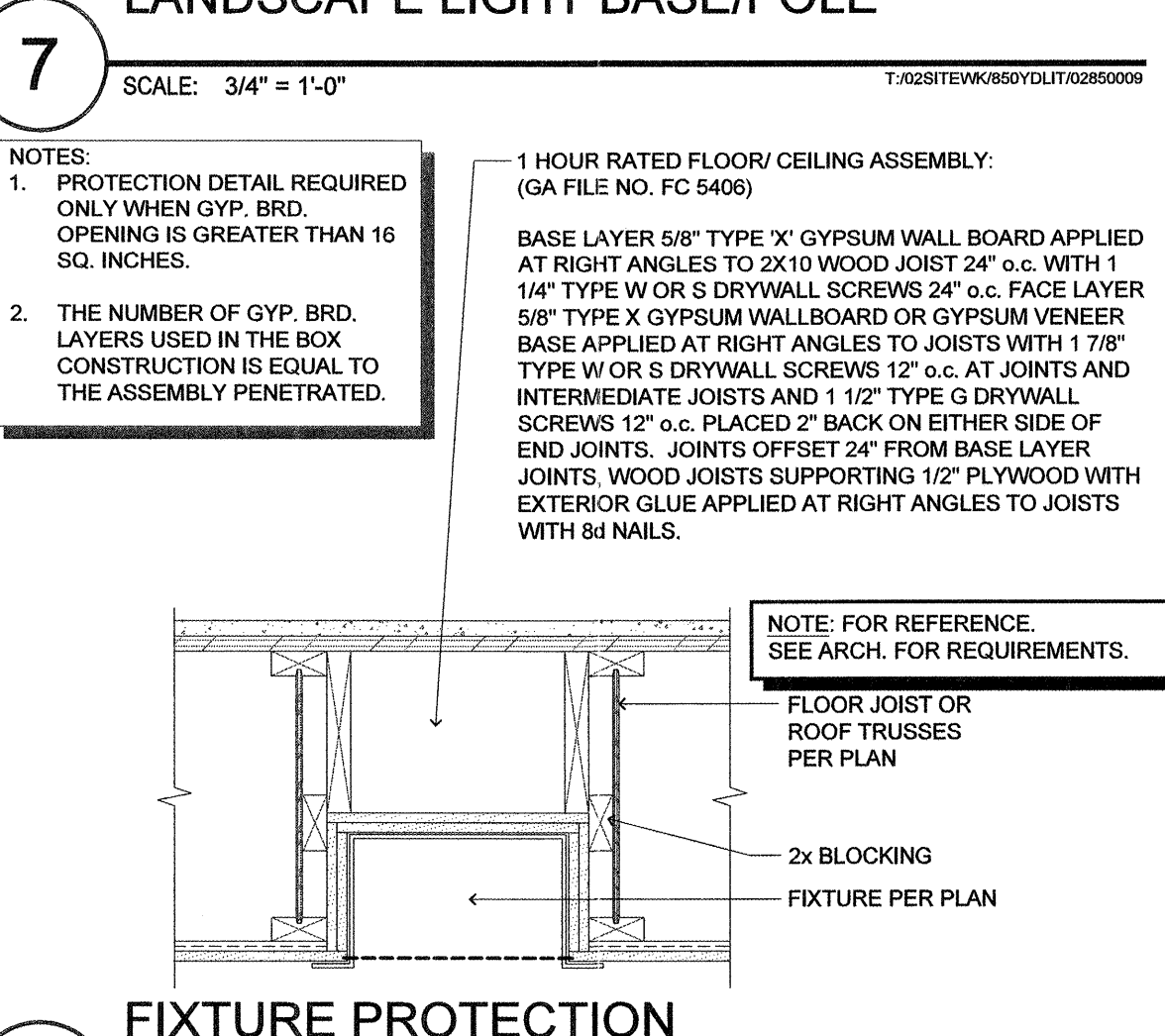
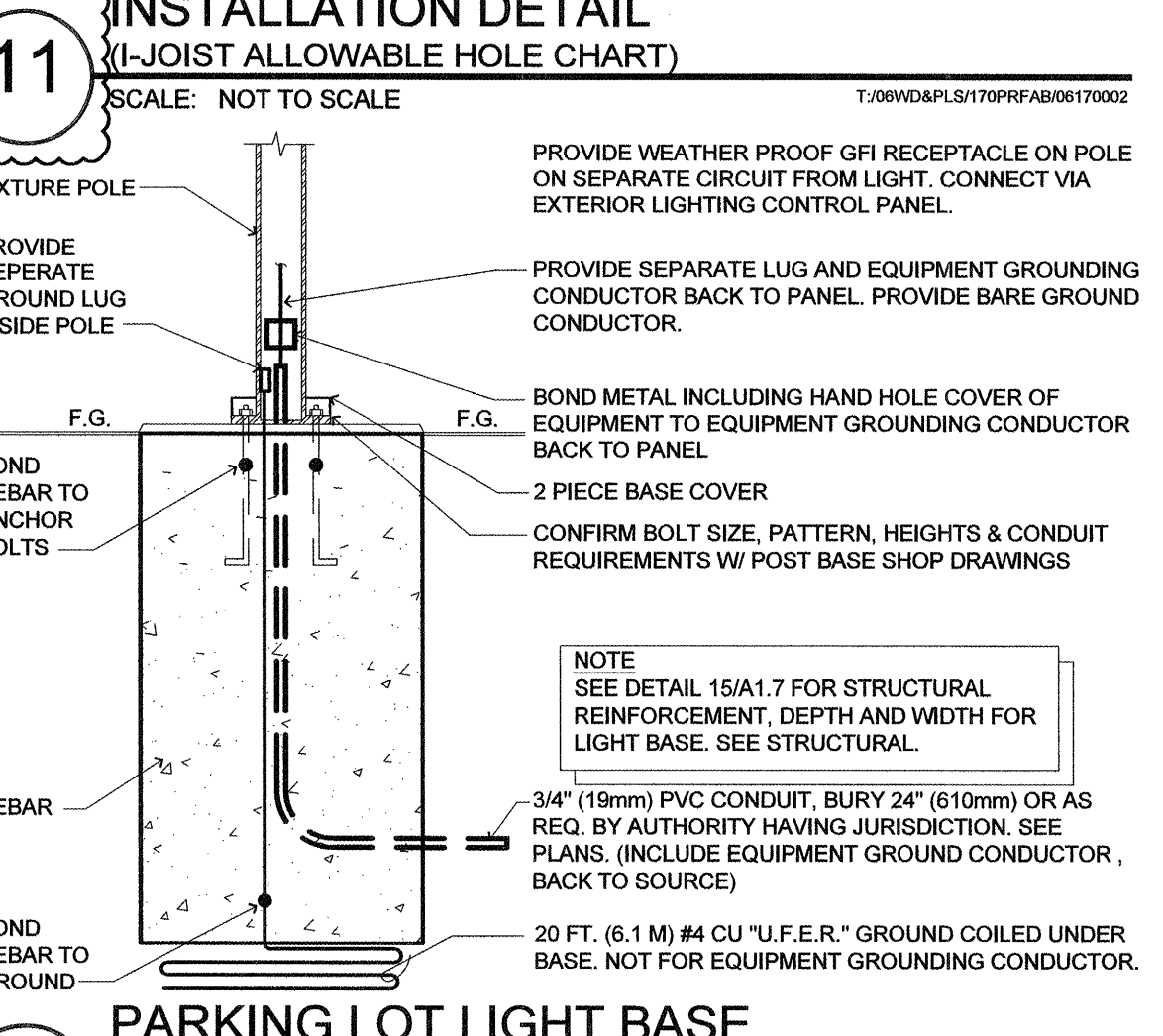
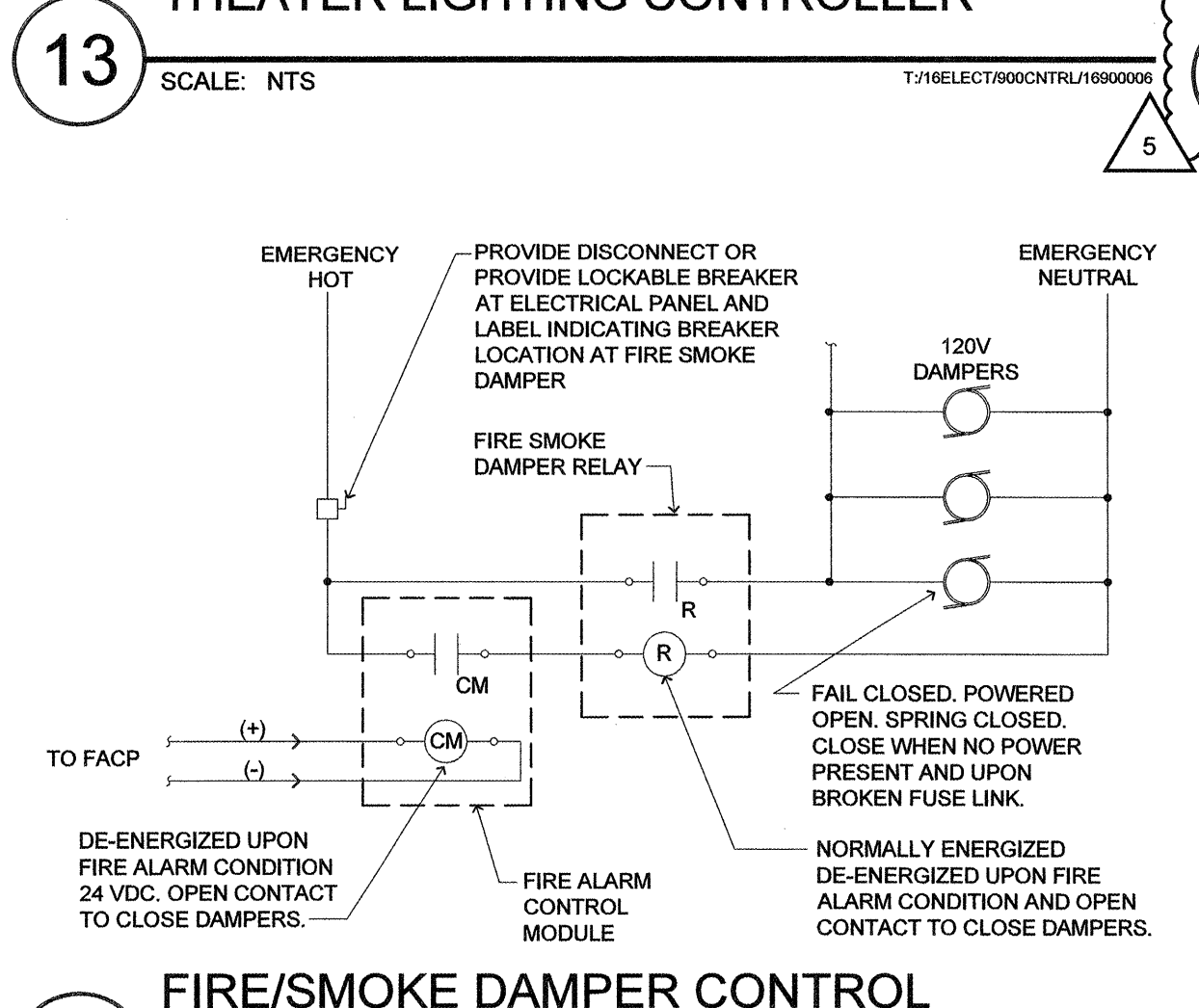
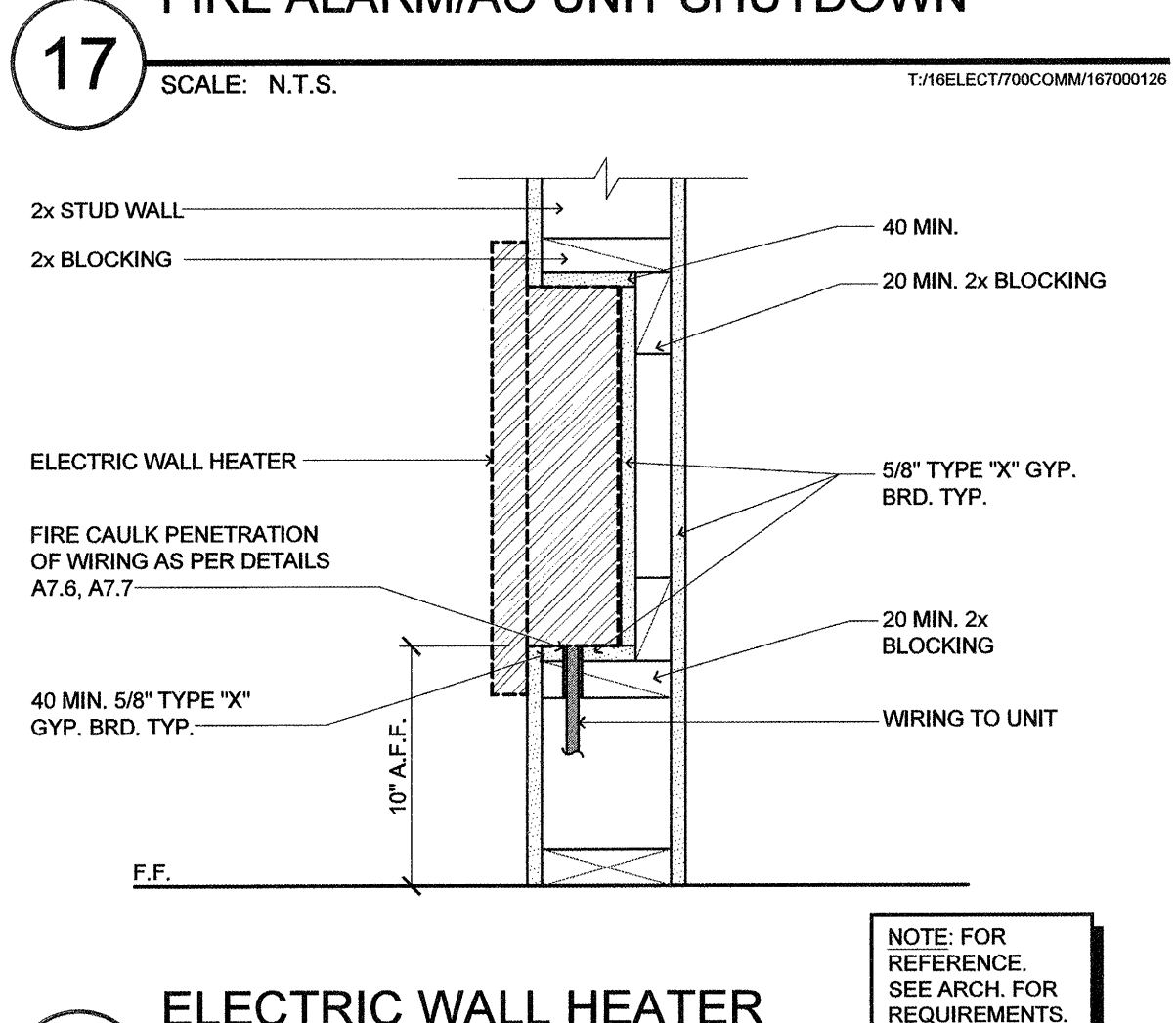
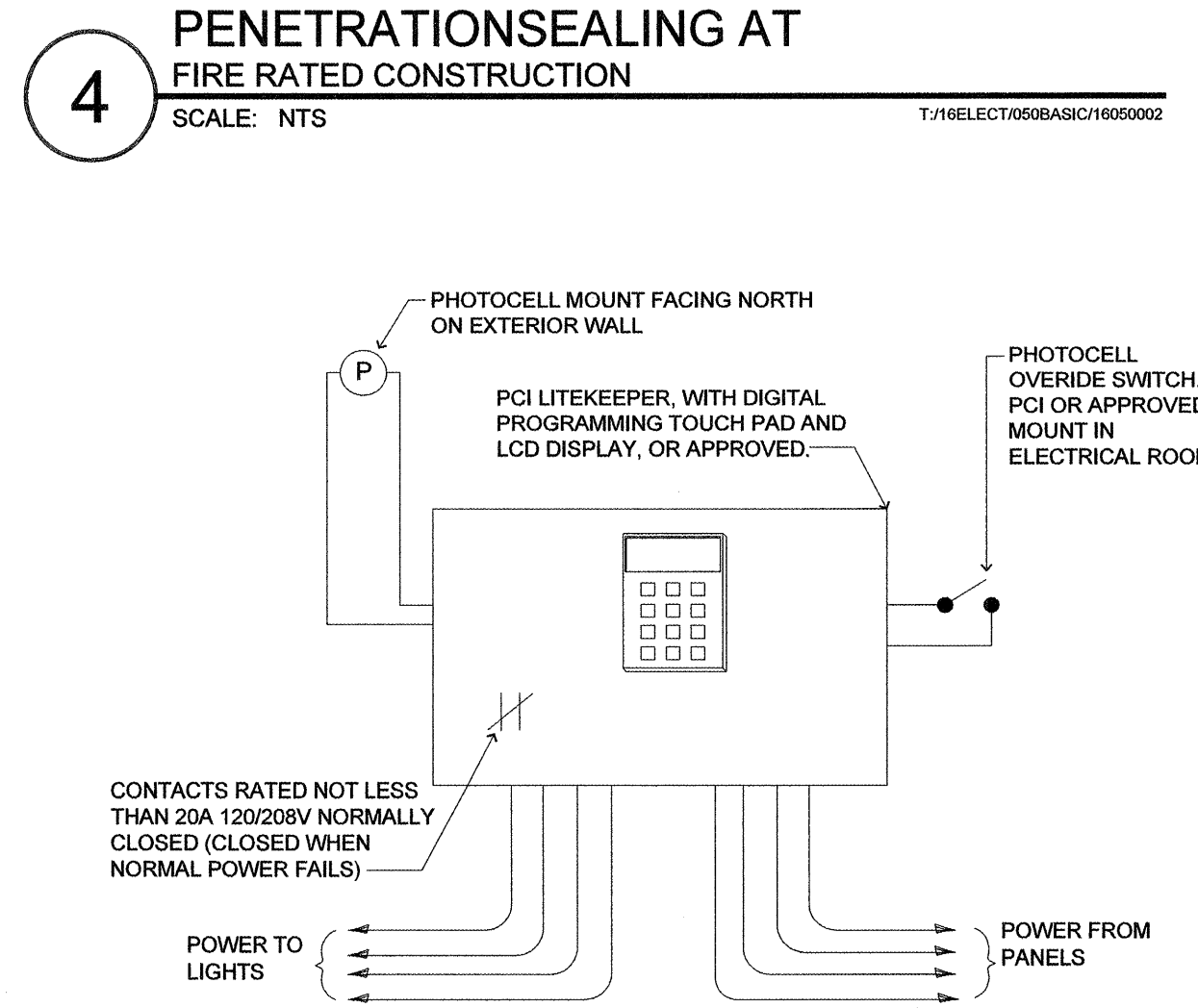
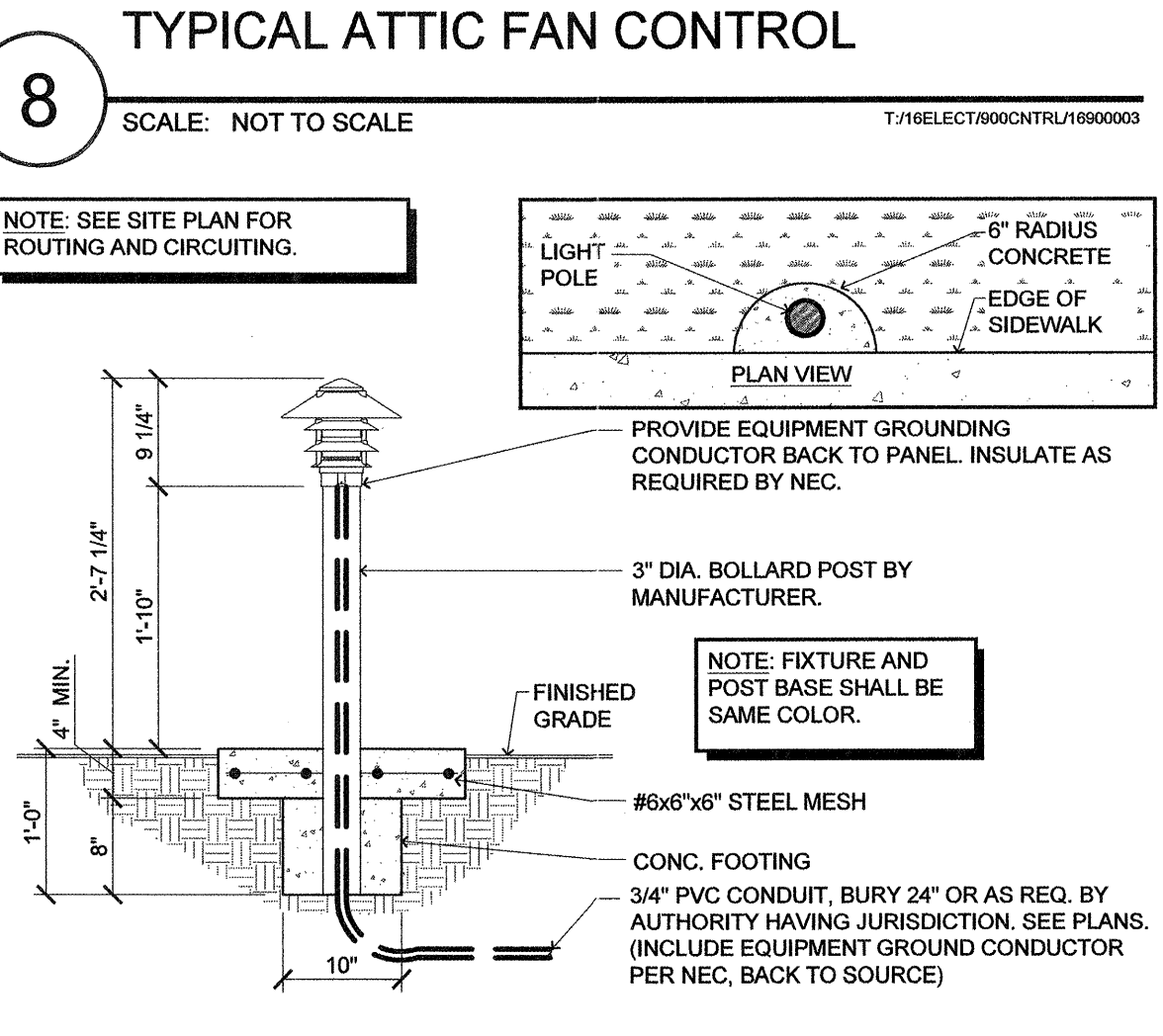
Joist Depth	Joist Series	Round Hole Size									
		2"	4"	6"	8"	10"	12"	14"	16"	18"	20"
9 1/2"	145 / 165	1'-6"	4'-0"	6'-6"	-	-	-	-	-	-	-
18"	190 / 190H	1'-0"	1'-0"	2'-6"	5'-6"	9'-0"	12'-6"	17'-0"	-	-	-

NOTE: FOR REFERENCE. SEE ARCH. FOR REQUIREMENTS.



**11** INSTALLATION DETAIL (JOIST ALLOWABLE HOLE CHART)  
SCALE: NOT TO SCALE

NOTE: FUTURE AND POST BASE SHALL BE SAME COLOR.



**lenity architecture**  
350 Main Street, Suite 200, Portland, ME 04101  
Phone: 503.599.1030, 503.599.0565, www.lenityarch.com

**COLSON AND COLSON GENERAL CONTRACTOR, INC.**  
2280 McGUIRE STREET SE, SUITE 200, SALEM, OREGON, 97302  
PHONE (503) 586-7401

**PORTLAND RETIREMENT RESIDENCE**  
802 OCEAN AVE., PORTLAND, MAINE 04103

**ELECTRICAL DETAILS**

DATE: 8/28/2015  
REVISED DATE: 9/22/2015, 2/2/2016, 7/18/2016

**SHEET E2.2b**