

ELECTRICAL MOUNTING HEIGHTS		ELECTRICAL LEGEND		ELECTRICAL HEAT SCHEDULE	
ITEM:	HEIGHT A.F.F. TO CENTER LINE:		RECESSED FLUORESCENT LIGHT FIXTURE		2 KILOWATT RECESSED WALL HEATER WITH INTEGRAL THERMOSTAT, 208 VOLT.
THERMOSTATS	48"		SURFACE MOUNT FLUORESCENT LIGHT FIXTURE		1.5 KILOWATT RECESSED WALL HEATER WITH INTEGRAL THERMOSTAT, 120 VOLT.
DOOR HOLDERS	75" TO CENTER		OPEN CHANNEL FLUORESCENT, TYPE INDICATED		1250 WATT BASEBOARD HEATER CONTROLLED BY WALL THERMOSTAT, 120 VOLT.
EMERGENCY CALL	40"		WALL MOUNT FIXTURE, TYPE INDICATED		1 KILOWATT RECESSED WALL HEATER WITH INTEGRAL THERMOSTAT, 120 VOLT.
SPEAKERS & PULL STATIONS	42"		SURFACE MOUNT OR CHAIN HUNG FIXTURE, TYPE INDICATED		1 KILOWATT BASEBOARD HEATER CONTROLLED BY WALL THERMOSTAT, 120 VOLT.
WALL LIGHTS IN CORRIDORS	80" TO CENTER LINE		RECESSED FIXTURE, TYPE INDICATED		750 WATT BASEBOARD HEATER CONTROLLED BY WALL THERMOSTAT, 120 VOLT.
EXTERIOR WALL LIGHTS	96" TO CENTER LINE (U.N.O.)		AREA OF RESCUE SIGN - SEE LIGHTING SCHEDULE		750 WATT LIQUID FILLED ELEC. HYDRONIC BASEBOARD HEATER CONTROLLED BY WALL THERMOSTAT, BERKO HB8750, 120 VOLT.
OUTLETS (COMMON AREAS)	17"		EXIT LIGHT, DIRECTIONAL ARROWS AS INDICATED.		500 WATT RECESSED WALL HEATER WITH INTEGRAL THERMOSTAT, 120 VOLT.
OUTLETS (SUITE AREAS)	24"		S.P.S.T. SWITCH, DIMMER SWITCH, FAN SPEED CONTROL SWITCH		500 WATT BASEBOARD HEATER CONTROLLED BY WALL THERMOSTAT, 120 VOLT.
LIGHT SWITCH	44"		3-WAY SWITCH, PILOT LIGHT SWITCH, KEYED SWITCH		
COUNTER OUTLETS	44" TO BOTTOM		AUTOMATIC WALL SWITCH		
STAIR LIGHTS	2" TO BOTTOM, ABOVE TREAD		DUPLEX RECEPTACLE, SPLIT WIRED WITH 1/2 SWITCHED, ABOVE COUNTER		
ELECTRICAL PANEL	80" TO TOP OF PANEL		DOUBLE DUPLEX (TWO) DUPLEX RECEPTACLE		
BATHROOM WALL VANITY LIGHT	6'-11" TO CENTER (SEE NOTE #1)		FLOOR BOX RECEPTACLE		
NOTES:			208V, 1P RECEPTACLE - 20A EXCEPT WHEN NOTED		
1. CENTER OVER CABINET BASE PROVIDE BACKING IF REQUIRED.			THROUGH WALL PTAC UNIT. SEE MECHANICAL DRAWINGS.		
2. INFORMATION SHOWN FOR REFERENCE. CONFORM TO ARCH, ADA, AND CODE REQUIREMENTS.					

### GENERAL NOTES:

SEE ELECTRICAL E5.X SHEETS FOR TYPICAL ELECTRICAL IN RESIDENTIAL SUITES. BASEBOARD AND WALL HEATERS TO BE WHITE.

CONNECT SUITES TO PANELS AS INDICATED ON POWER PLANS.

CONSULT FINISH SCHEDULE FOR CEILING TYPE IN COMMON AREAS. COORDINATE FIXTURE TYPE AND MOUNTING WITH CEILING TYPE.

SEE LIGHT FIXTURE PROTECTION DETAIL ON 0/E2.2b AND TYPICAL FOR RECESSED LIGHT FIXTURES AND EXHAUST FANS IN FIRE RATED CEILINGS. MODIFY DETAIL AS NEEDED TO MATCH UNIT INSTALLED.

PENETRATIONS OF FIRE RATED CONSTRUCTION OR DRAFT STOP CONSTRUCTION TO BE INSTALLED AND PROTECTED AS REQUIRED BY LOCAL CODES AND BUILDING AUTHORITY. SEE ARCH. FOR REQUIREMENTS.

ELECTRICAL CONTRACTOR RESPONSIBLE FOR DETERMINING NUMBER AND SIZE OF CONDUCTORS, GROUND, AND NEUTRAL WIRES. SEE PANEL SCHEDULES FOR MIN. SIZES.

COORDINATE MECHANICAL EQUIPMENT ELECTRICAL CONNECTIONS WITH MECHANICAL DRAWINGS AND EQUIPMENT FURNISHED. VERIFY LOCATIONS, CHARACTERISTICS AND LOADS, AND ADJUST WIRE AND BREAKER SIZES AS NEEDED. CONNECT PERIPHERALS AND INTERLOCK WITH OTHER MECHANICAL EQUIPMENT AS SHOWN ON MECHANICAL DRAWINGS OR AS REQUIRED.

PROVIDE DUCT SMOKE (PHOTO TYPE) DETECTORS AT RETURN OF AIR HANDLING EQUIPMENT IF REQUIRED BY LOCAL CODE.

CONNECT DUCT SMOKE DETECTORS TO SHUT DOWN AIR HANDLING UNIT AND PROVIDE REMOTE RESET LIGHT/ALARM IN CORRIDOR WALL CLOSEST TO UNIT. CONNECT SMOKE DETECTOR OUTPUT TO FIRE ALARM PANEL.

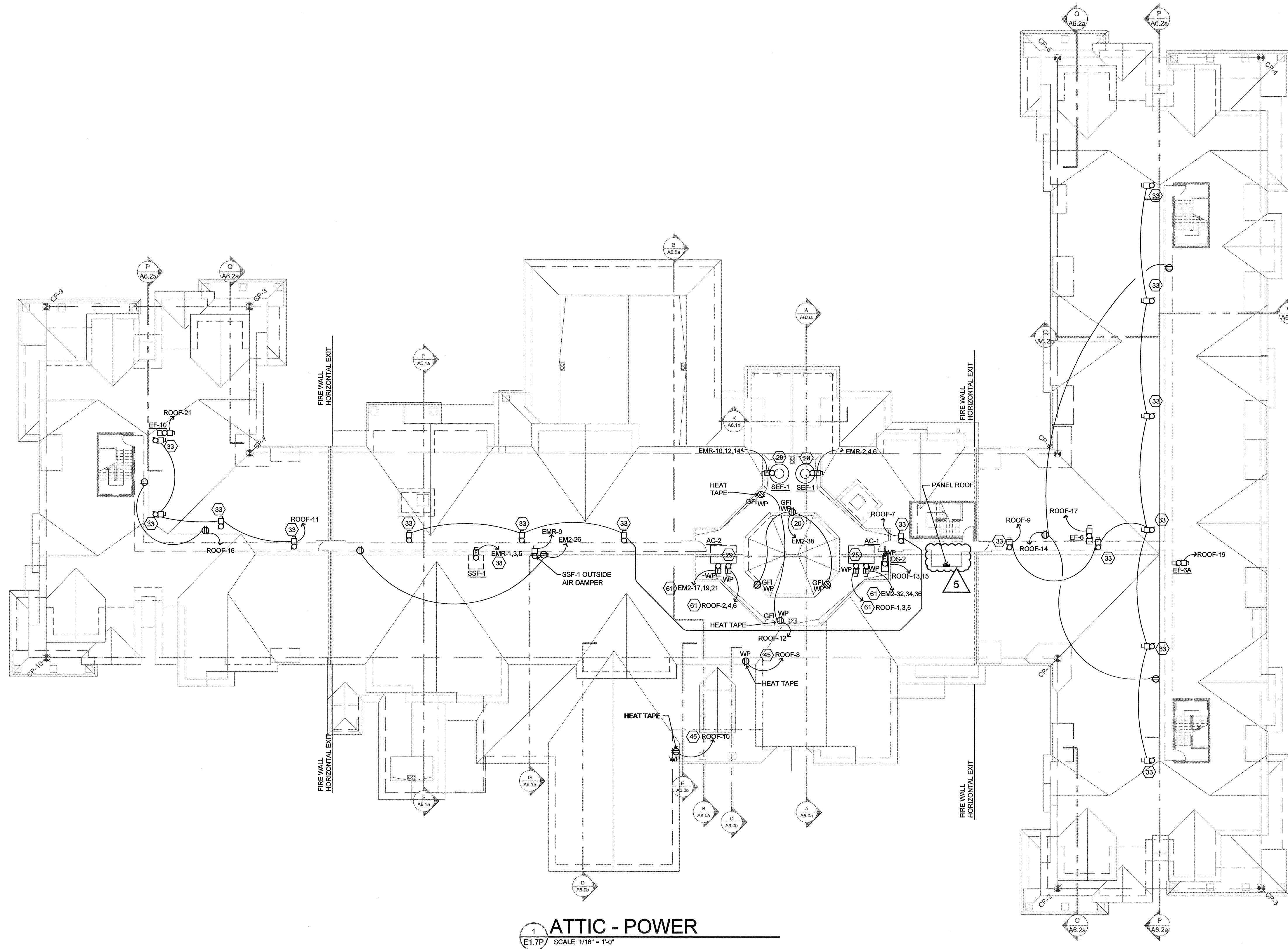
CONNECT CORRIDOR NON-EMERGENCY LIGHTING THROUGH AUTOMATIC LIGHTING CONTROLLER LOCATED IN MECHANICAL ROOM.

PROVIDE LINK SEAL LINK SLEEVE AT BUILDING ELECTRICAL PENETRATIONS IN FOUNDATION OR WHERE EXPOSED TO EARTH/ELEMENTS.

PROVIDE WARNING SIGN AT DISCONNECTS THAT SERVE EQUIPMENT LOCATIONS WITH MORE THAN ONE DISCONNECT. EQUIPMENT WITH MORE THAN ONE DISCONNECT SHALL HAVE LOCKABLE DISCONNECTS.

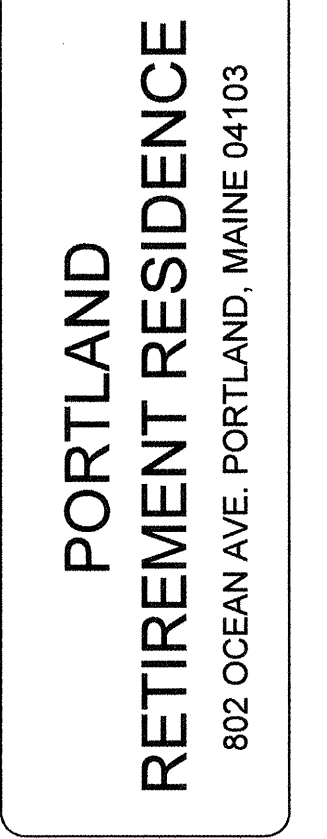
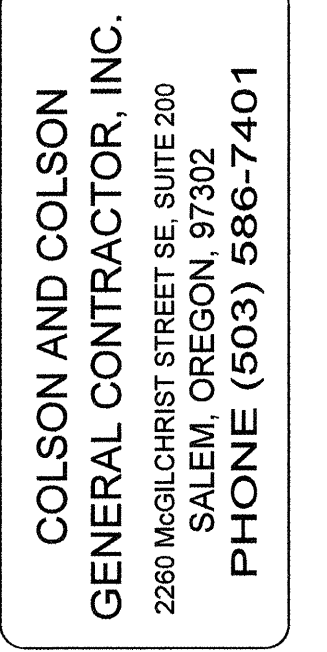
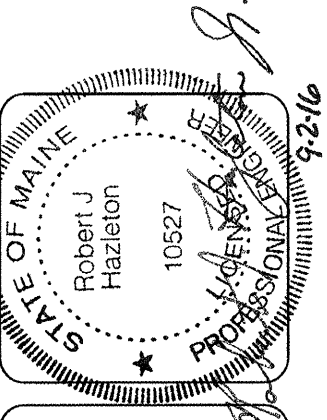
DO NOT USE HAMMERS OR BLUNT FORCE DEVICES TO "KNOCK-OUT" WIREWAYS IN BUILDING MATERIALS MAINTAIN NOT LESS THAN 18" FROM EDGE OF JOISTS. SEE DETAIL #11/E2.2b AND #14/E2.2b FOR ALLOWABLE BORING/NOTCHING OF MEMBERS. SEE ARCH FOR REQUIREMENTS.

CIRCUIT "E" DESIGNATED LIGHT AND RECEPTACLES FIXTURES TO EMERGENCY PANEL.



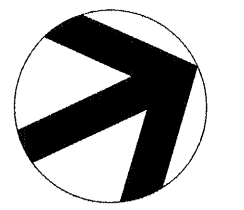
SWITCHES AND RECEPTACLES SHALL BE LEVITON DECORA SERIES (WHITE ONLY) UNLESS SPECIFIED OTHERWISE. SEE DRAWING E2.1 WIRING DEVICES.

1 ATTIC - POWER  
E1.7P SCALE: 1/16" = 1'-0"



DATE	8/28/2015
REVISED DATE	9/22/2015
	2/2/2016
	7/18/2016

SHEET  
E1.7P



15:00:00 10/11/15 AM Job: 14132015 10:54 AM Job Path: R:\14132015\attic-power-plan.e1.7p