

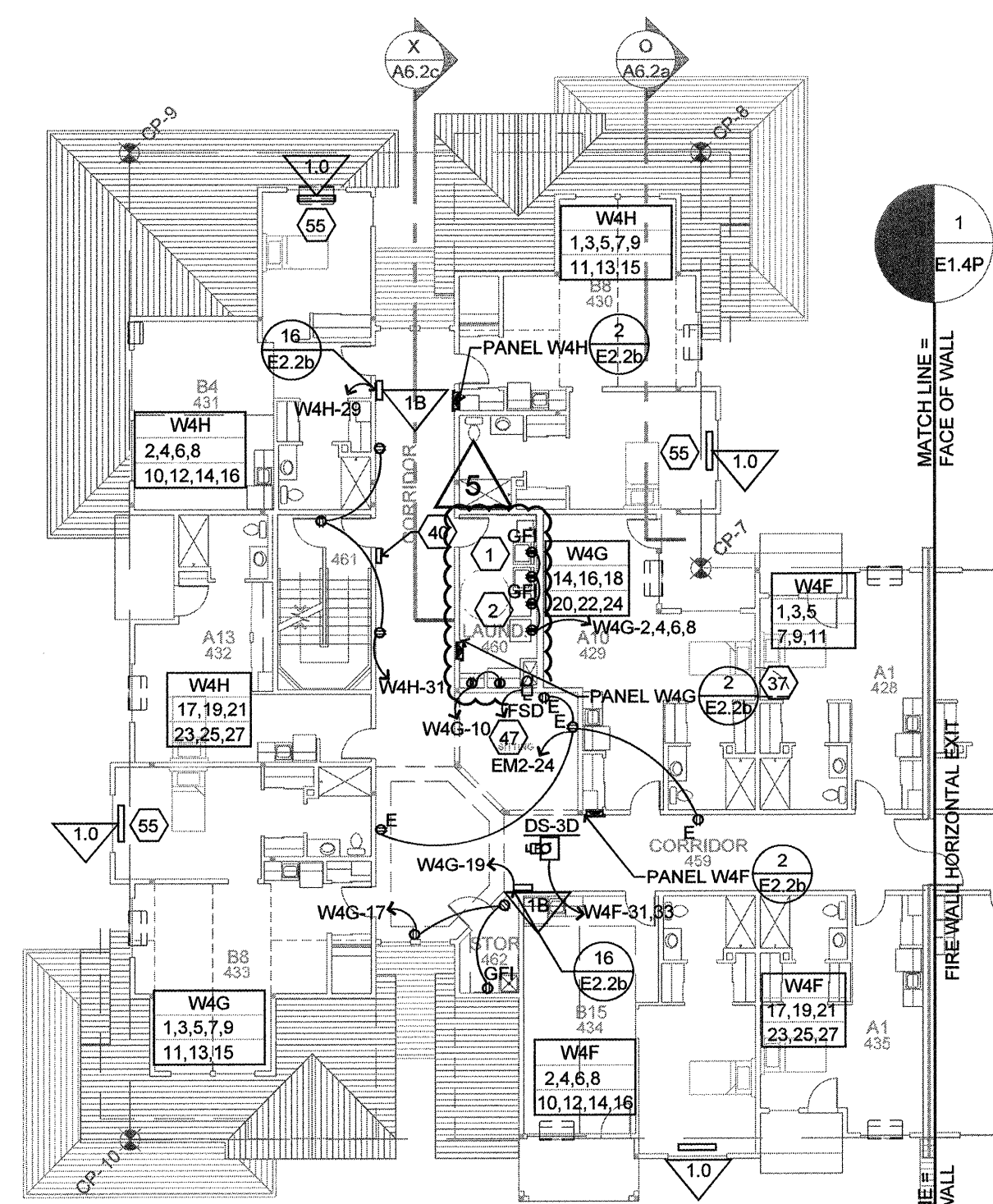
**SWITCHES AND RECEPTACLES SHALL BE LEVITON DECORA SERIES (WHITE ONLY) UNLESS SPECIFIED OTHERWISE. SEE DRAWING E2.1 WIRING DEVICES.**

**GENERAL NOTES:**

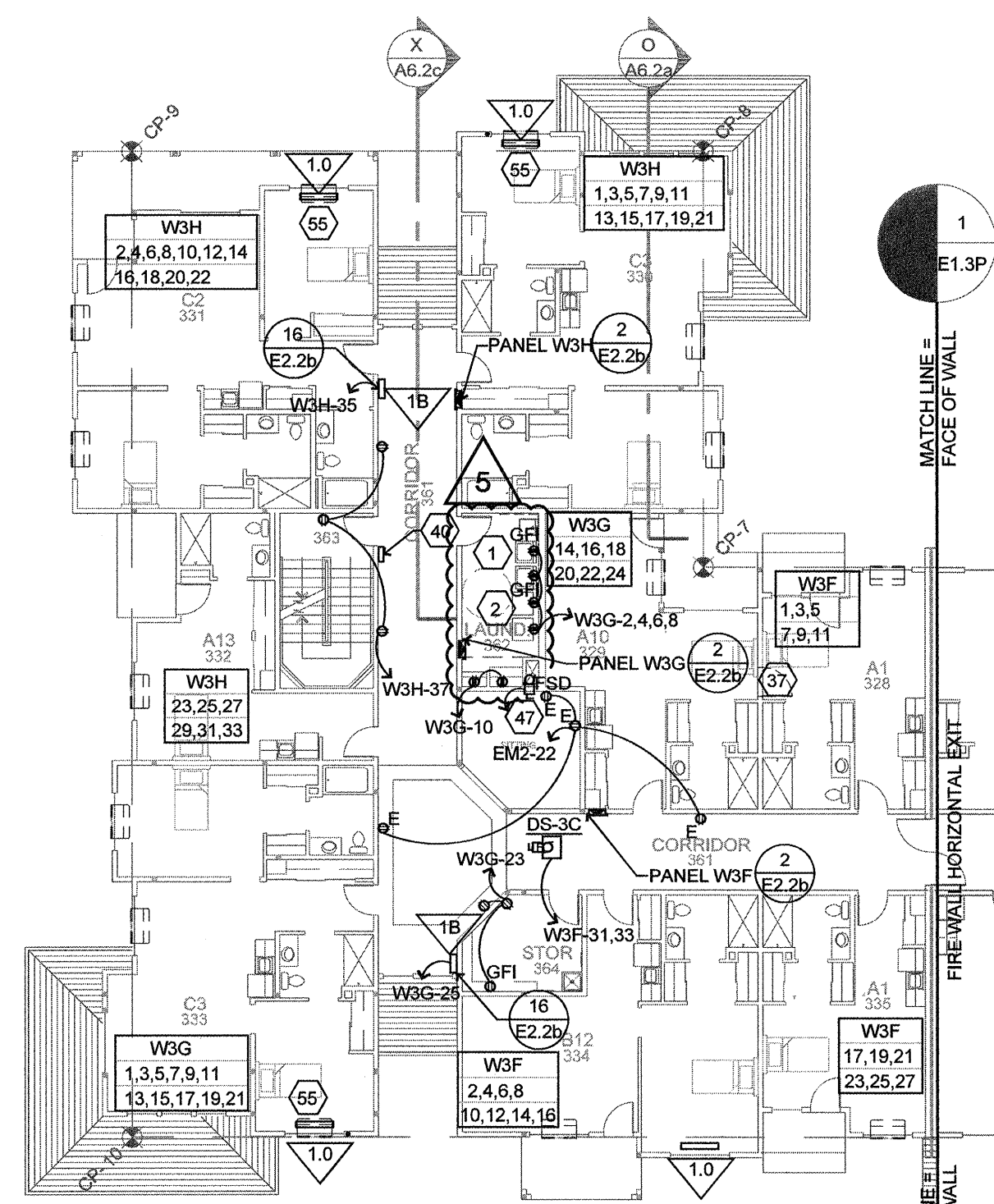
- SEE ELECTRICAL ES.X SHEETS FOR TYPICAL ELECTRICAL IN RESIDENTIAL SUITES, BASEBOARD AND WALL HEATERS TO BE WHITE.
- CONNECT SUITES TO PANELS AS INDICATED ON POWER PLANS.
- CONSULT FINISH SCHEDULE FOR CEILING TYPE IN COMMON AREAS. COORDINATE FIXTURE TYPE AND MOUNTING WITH CEILING TYPE.
- SEE LIGHT FIXTURE PROTECTION DETAIL ON 6/E2.2b AND TYPICAL FOR RECESSED LIGHT FIXTURES AND EXHAUST FANS IN FIRE RATED CEILINGS. MODIFY DETAIL AS NEEDED TO MATCH UNIT INSTALLED.
- PENETRATIONS OF FIRE RATED CONSTRUCTION OR DRAFT STOP CONSTRUCTION TO BE INSTALLED AND PROTECTED AS REQUIRED BY LOCAL CODES AND BUILDING AUTHORITY. SEE ARCH. FOR REQUIREMENTS.
- ELECTRICAL CONTRACTOR RESPONSIBLE FOR DETERMINING NUMBER AND SIZE OF CONDUCTORS, GROUND, AND NEUTRAL WIRES. SEE PANEL SCHEDULES FOR MIN. SIZES.
- COORDINATE MECHANICAL EQUIPMENT ELECTRICAL CONNECTIONS WITH MECHANICAL DRAWINGS AND EQUIPMENT FURNISHED. VERIFY LOCATIONS, CHARACTERISTICS, LOADS, AND ADJUST WIRE AND BREAKER SIZES AS NEEDED. CONNECT PERIPHERALS AND INTERLOCK WITH OTHER MECHANICAL EQUIPMENT AS SHOWN ON MECHANICAL DRAWINGS OR AS REQUIRED.
- PROVIDE DUCT SMOKE (PHOTO TYPE) DETECTORS AT RETURN OF AIR HANDLING EQUIPMENT IF REQUIRED BY LOCAL CODE.
- CONNECT DUCT SMOKE DETECTORS TO SHUT DOWN AIR HANDLING UNIT AND PROVIDE REMOTE RESET LIGHT/ALARM IN CORRIDOR WALL CLOSEST TO UNIT. CONNECT SMOKE DETECTOR OUTPUT TO FIRE ALARM PANEL.
- CONNECT CORRIDOR NON-EMERGENCY LIGHTING THROUGH AUTOMATIC LIGHTING CONTROLLER LOCATED IN MECHANICAL ROOM.
- PROVIDE LINK SEAL LINK SLEEVE AT BUILDING ELECTRICAL PENETRATIONS IN FOUNDATION OR WHERE EXPOSED TO EARTH ELEMENTS.
- PROVIDE WARNING SIGN AT DISCONNECTS THAT SERVE EQUIPMENT LOCATIONS WITH MORE THAN ONE DISCONNECT. EQUIPMENT WITH MORE THAN ONE DISCONNECT SHALL HAVE LOCKABLE DISCONNECTS.
- DO NOT USE HAMMERS OR BLUNT FORCE DEVICES TO "KNOCK-OUT" WIRES/IN BUILDING MATERIALS MAINTAIN NOT LESS THAN 18" FROM EDGE OF JOISTS. SEE DETAIL #1/E2.2b AND #14/E2.2b FOR ALLOWABLE BORING/ANCHORING OF MEMBERS. SEE ARCH FOR REQUIREMENTS. CIRCUIT "E" DESIGNATED LIGHT AND RECEPTACLES FIXTURES TO EMERGENCY PANEL.

**ELECTRICAL KEY NOTES:**

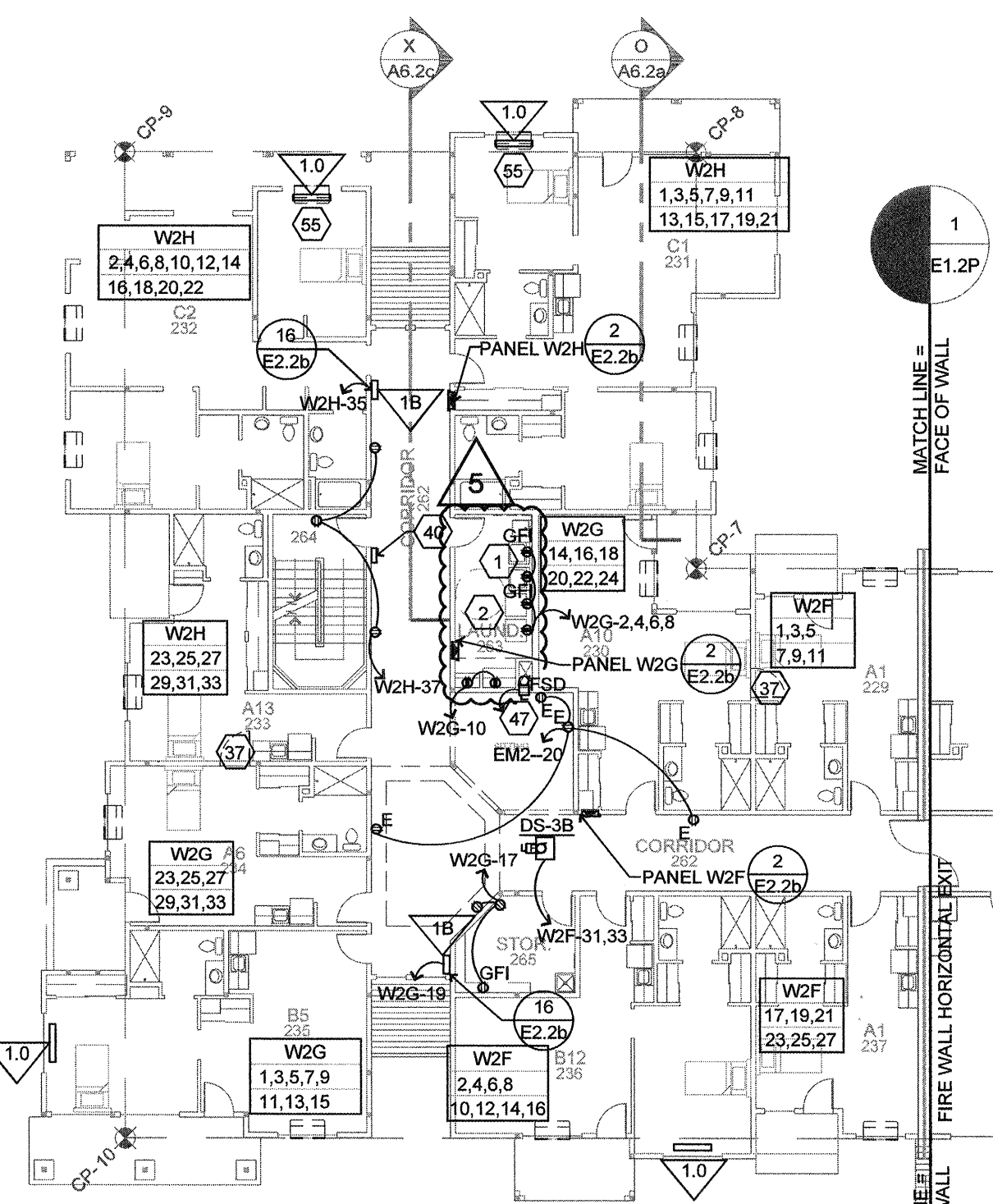
- CONNECT 120 VOLT SINGLE PHASE WASHING MACHINE. PROVIDE ONE CIRCUIT FOR EACH MACHINE. (MOUNT 40" A.F.F.)
- CONNECT 120 VOLT SINGLE PHASE GAS CLOTHES DRYER. PROVIDE ONE CIRCUIT FOR EACH MACHINE. RUN 3/4" EMT FROM 1ST FLOOR LAUNDRY ROOM TO ATTIC FOR FUTURE DRYER BOOSTER FAN. (MOUNT 40" A.F.F.)
- ELECTRIC RANGE. PROVIDE NEMA 14-50R 50 AMP 120/208VOLT SINGLE PHASE RANGE RECEPTACLE AT 6" A.F.F.
- ENTRY CANOPY / EXIT LIGHTS. CONNECT TO EXTERIOR LIGHTING CONTROL. SEE DETAIL 3/E2.2b
- PROVIDE A 30-AMPERE, 120-VOLT CIRCUIT WITH A NEMA L5-20R RECEPTACLE INSTALLED AT THE STANDPIPE RISER, SUPPLIED FROM THE EMERGENCY PANEL. THE WIRING SHALL BE IN METAL CONDUIT WITH APPROPRIATE GALVANIZED BOXES AND WITH WEATHERPROOF GASKETED FLAP-DOOR COVER. RECEPTACLE SHALL BE MOUNTED AS HIGH AS THE STANDPIPE AND WITHIN 2'. EACH OUTLET BOX MUST BE PAINTED "FIRE-ALARM RED" IN COLOR AND BE MARKED "ONLY FOR FIRE DEPARTMENT USE."
- PROVIDE TYPE "V" FIXTURE AND GFI RECEPTACLE IN ELEVATOR PIT. DO NOT CONNECT ON SAME CIRCUIT. MOUNT SWITCH IN PIT. MOUNT FIXTURES TO AVOID CAR.
- PROVIDE 20AMP ELEVATOR CAB LIGHT FUSED DISCONNECT IN EQUIPMENT ROOM CIRCUITED TO EMERGENCY PANEL. FUSE SIZE PER MANUFACTURER.
- TO EXTERIOR PARKING AREA, PATHWAY AND LANDSCAPE LIGHTING. CIRCUIT TO PANEL VIA EXTERIOR LIGHTING CONTROL. SEE SITE PLAN DRAWING(S) FOR LOCATIONS AND QUANTITIES.
- ELECTRICAL MAIN DISTRIBUTION PANEL. SEE ONE-LINE.
- DOMESTIC COLD WATER AND FIRE SPRINKLER SERVICE ENTRANCES FOR COORDINATE WITH PLUMBING CONTRACTOR.
- EMERGENCY STANDBY ENGINE GENERATOR. SEE SPECIFICATIONS. SEE SITE E1.0/A1.1 PLAN FOR LOCATION.
- AUTOMATIC TRANSFER SWITCH FURNISHED AS PART OF ENGINE GENERATOR PACKAGE. SEE SPECIFICATIONS AND ONE-LINE.
- PROVIDE FUSED DISCONNECT ELEVATOR MODULE WITH INTEGRAL SHUNT-TRIP FOR ELEVATOR MACHINE. COORDINATE FUSE REQUIREMENTS WITH ELEVATOR MANUFACTURER. CONNECT TO FIRE ALARM AND REMOTE SHUNT-TRIP SWITCH. COOPER BUSMAN EATON ELEVATOR CONTROL SWITCH ES SERIES, OR APPROVED.
- TELEPHONE TERMINAL BOARD. SEE TELEPHONE SECTION OF SPECIFICATIONS. PROVIDE DOUBLE DUPLEX RECEPTACLE MOUNTED ON BACKBOARD AND TWO DEDICATED CIRCUITS AND #6 EQUIPMENT GROUND CONNECTED TO GROUND BUS AT MDP.
- TELEVISION TERMINAL BD. SEE TELEVISION SECTION OF SPECIFICATIONS. PROVIDE DOUBLE DUPLEX RECEPTACLE MOUNTED ON BACKBOARD AND TWO DEDICATED CIRCUITS AND #6 EQUIPMENT GROUND CONNECTED TO GROUND BUS AT MDP.
- IRRIGATION CONTROL PANEL. PROVIDE RECEPTACLE ON DEDICATED CIRCUIT. STUB OUT A 2" PVC CONDUIT TO EXTERIOR OF BUILDING. COORDINATE LOCATION AND REQUIREMENTS WITH IRRIGATION CONTRACTOR.
- POWER DOOR CONNECTED TO ATRIUM SMOKE CONTROL SYSTEM. SEE DETAIL 15/E2.2b AND SEQUENCE OF OPERATION ON E1.7P SEE SPECIFICATION SECTION 0510 FOR ADDITIONAL WIRING REQUIREMENTS.
- INSTALL RECEPTACLE HORIZONTALLY.
- LOCATE FIXTURES IN ATTIC SPACE FOR EACH WING. MOUNT IN AREAS TO PROVIDE LIGHT FOR MAINTENANCE USE. PROVIDE PILOT LIGHT SWITCH AT EACH ACCESS INSIDE OF STAIR DOOR.
- PROVIDE WEATHERPROOF LIGHT FIXTURE AND WEATHERPROOF GFI RECEPTACLE WITHIN 10 FEET OF MECHANICAL EQUIPMENT. COORDINATE LOCATION WITH MECHANICAL.
- KITCHEN MAKE-UP AIR UNIT. ROUTE FAN POWER CONDUCTORS THROUGH SUPPLY VFD#1 LOCATED IN ENERGY MANAGEMENT SYSTEM (EMS) CONTROL PANEL. LOCATED ON THE SIDE OF THE KITCHEN HOOD. PROVIDE ONE 3/4" CONDUIT FOR CONTROL WIRING FROM EMS CONTROL PANEL TO MAKE-UP AIR UNIT. PROVIDE TWO SETS OF 2-WIRE 16 AWG SHIELDED MULTI-CONDUCTOR CABLES BETWEEN MAU AND EMS PANEL. DO NOT ROUTE CONTROL CABLE ADJACENT TO HIGH POWER WIRING. COORDINATE WITH KITCHEN HOOD VENTILATION CONTROL CONSULTANT DRAWINGS H-3 AND H-4. ACTIVATION OF ANSUL SYSTEM SHALL SHUT DOWN MAU. FUSE SIZE PER MANUFACTURER.
- THRU-WALL HVAC UNIT. SEE MECHANICAL SPECIFICATION. FURNISHED BY OWNER. INSTALLED BY MECHANICAL CONTRACTOR. CONNECTED BY ELECTRICAL CONTRACTOR.
- GAS FIRED WATER HEATERS. CIRCUIT ELECTRICAL GAS WATER HEATER CONNECTIONS TO BACK-UP POWER PANEL.
- HOT WATER RECIRCULATING PUMPS. FRACTIONAL HORSEPOWER 120V SINGLE PHASE. CIRCUIT TO BACK-UP POWER PANEL.
- PACKAGED ROOFTOP GAS PACK AIR CONDITIONING EQUIPMENT. SEE MECHANICAL EQUIPMENT SCHEDULE. SEE DETAIL 17/E2.2b.
- KITCHEN RANGE HOOD EXHAUST FAN. ROUTE FAN POWER CONDUCTORS THROUGH EXHAUST VFD#2 LOCATED IN ENERGY MANAGEMENT SYSTEM (EMS) CONTROL PANEL LOCATED ON THE SIDE OF THE KITCHEN HOOD. COORDINATE WITH KITCHEN HOOD VENTILATION CONTROL CONSULTANT DRAWINGS H-2 AND H-4. FUSE SIZE PER MANUFACTURER.
- NOT USED
- EF-6/6a. CONNECT TO EMERGENCY PANEL SEE DETAILS ON M4.2. FUSE PER MANUFACTURER AND NEC. SEE SPECIFICATIONS FOR ADDITIONAL REQUIREMENTS SPECIFIC TO THIS EQUIPMENT. SEE DETAIL 15/E2.2b.
- AC-2 PACKAGED ROOFTOP GASPACK AIR CONDITIONING EQUIPMENT. SEE MECHANICAL EQUIPMENT SCHEDULE. FUSE PER MANUFACTURER. SEE DETAIL 17/E2.2b.
- COORDINATE LIGHTING WITH EQUIPMENT. CHAIN OR SURFACE MOUNT.
- MOUNT LIGHTS, RECEPT., SWITCHES AND TIMERS ON WALL NEXT TO CATWALK.
- SF-2 SUPPLY FAN FOR COOLING AND HEATING CORRIDORS. SEE MECHANICAL EQUIPMENT SCHEDULE FOR DESCRIPTION. SEE DETAIL 17/E2.2b.
- 1/2 HP ATTIC FAN ON ROOF. PROVIDE INDIVIDUAL DISCONNECTS. MOUNT FAN CONTROL 12" BELOW ROOF ON WALL NEXT TO CATWALK. SEE DETAIL 17/E2.2b.
- QMARK MH-83-81 RATED 3KW AT 208 VOLT 1 PHASE. SUSPENDED FROM CEILING. CONTROLLED BY REMOTE WALL THERMOSTAT.
- 30 AMP 2 POLE CIRCUIT FOR COMBO WASHER & DRYER UNIT.
- PROVIDE POWER FOR ELECTRIC FIRE PLACE PER MANUFACTURER REQUIREMENTS.
- LOCATION OF FUTURE DOOR (DO NOT CIRCUIT (WIRE) IN THIS LOCATION).
- NOT USED
- AREA OF RESCUE ASSISTANCE ANNUNCIATOR. CORNELL 4200 SERIES. WIRE PER MANUFACTURER REQUIREMENTS. NOT LESS THAN #12 AWG. COPPER FOR POWER. PROVIDE BATTERY BACKUP BY MANUFACTURER AND LOCATED IN CLOSEST OFFICE 151.1. SEE I.E.S.1 LABEL ANNUNCIATOR PER AHJ REQUIREMENTS. SYSTEM PROVIDED BY OWNER.
- AREA OF RESCUE CALL STATION. CORNELL 4200 SERIES. CONNECT TO ANNUNCIATOR PANEL. IN FOYER. PER MANUFACTURER REQUIREMENTS. SYSTEM PROVIDED BY OWNER.
- EMERGENCY CALL REMOTE HEAD END. VERIFY LOCATION AND ELECTRICAL REQUIREMENTS WITH GENERAL CONTRACTOR.
- SHUTDOWN KITCHEN EQUIPMENT AND RECEPTACLE POWER UNDER HOOD UPON ACTIVATION OF ANSUL SYSTEM. SEE KITCHEN DRAWINGS.
- GFI RECEPTACLE @ #48 FOR WATER SOFTENER. CONNECT TO DEDICATED 120V CIRCUIT. OWNER SUPPLIED WATER SOFTENER. CONTRACTOR TO INSTALL.
- FRACTIONAL HP FAN MOTOR. 120V. CONNECT TO SWITCHED LEG OF LIGHTING CIRCUIT.
- PROVIDE GFI BREAKER.
- KITCHEN WALK-IN FREEZER & COOLER CONDENSING UNITS. REFER TO KITCHEN PLANS.
- FIRE/SMOKE DAMPER CONNECTION. CIRCUIT TO BACK-UP POWER PANEL. SEE DETAIL 12/E2.2b. DO NOT CONNECT MORE THAN SEVEN FSD'S TO EACH CIRCUIT.
- EMERGENCY CALL SYSTEM BACK BOARD. PROVIDE RECEPTACLE ON DEDICATED CIRCUIT.
- NOT USED
- BROAN MODEL 154 LOW PROFILE CEILING HEATER. 120 VOLT, 1,250 WATTS. WITH MODEL 86W LINE-VOLTAGE THERMOSTAT.
- PROVIDE UN-SWITCHED/UNCONTROLLED HOT TO EXIT SIGNS. TYPICAL.
- WIRE ATTIC LIGHTS TO EMERGENCY CIRCUIT.
- PROVIDE #6 CU GROUND WIRE FOR P.A. SYSTEM TO BUILDING GROUND IN MECHANICAL ROOM.
- ELECTRIC DRYER-VERIFY ELEC. REQUIREMENTS.
- WIRE FOR FUTURE THRU-WALL PTAC UNIT TO REPLACE BASEBOARD IN "C" UNIT BEDROOMS. SEE DETAIL "C-UNIT, TYPICAL." ON ES.X SHEETS. DO NOT CIRCUIT (WIRE) IN THIS LOCATION.
- PROVIDE EMERGENCY POWER SWITCH/DIMMER BYPASS RELAY. SEE DETAIL 9/E2.2b.
- PROVIDE SEPARATE BOX FOR EMERGENCY CIRCUIT.
- CONNECT VIA LIGHTING CONTROLLER. SEE DETAIL 3/E2.2b.
- SINGLE POINT POWER CONNECTION. PROVIDE CONNECTION TO EXTERIOR CONDENSING UNIT. SEE MECHANICAL.
- PROVIDE CONDUCTORS FOR BASEBOARD CONNECTIONS. INCLUDE REMOTE THERMOSTAT WIRING.
- ONLY HEAT AND FAN TO OPERATE WHEN EMERGENCY POWER IS IN OPERATION. PROVIDE DUAL CONNECTION TO UNIT. MECHANICAL UNIT MODIFICATIONS IS NOT ACCEPTABLE. SEE MECHANICAL.
- PROVIDE CF-1 CEILING FAN WITH SEPARATE SWITCH FOR FAN AND LIGHT. SEE ES5 SHEETS.



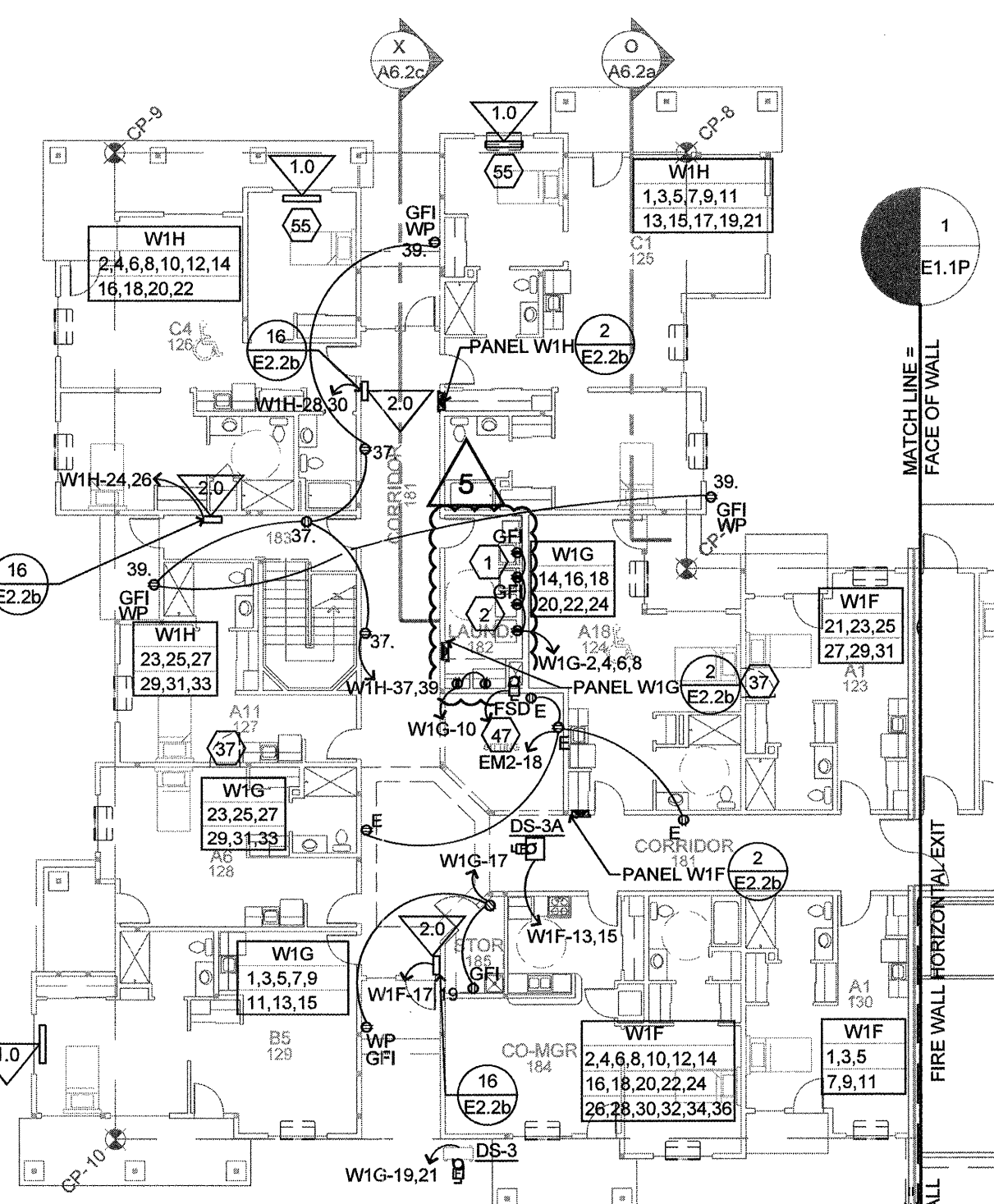
**4 FOURTH FLOOR - POWER**  
E1.6P SCALE: 1/16" = 1'-0"



**3 THIRD FLOOR - POWER**  
E1.6P SCALE: 1/16" = 1'-0"

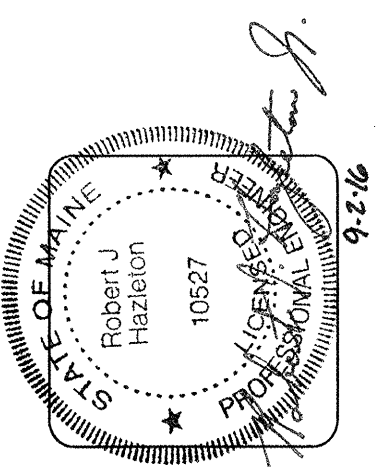


**2 SECOND FLOOR - POWER**  
E1.6P SCALE: 1/16" = 1'-0"



**1 FIRST FLOOR - POWER**  
E1.6P SCALE: 1/16" = 1'-0"

ELECTRICAL MOUNTING HEIGHTS		ELECTRICAL LEGEND		ELECTRICAL HEAT SCHEDULE	
ITEM:	HEIGHT A.F.F. TO CENTER LINE:	RECESSED FLUORESCENT LIGHT FIXTURE	DISCONNECT SWITCH	2.0	2 KILOWATT RECESSED WALL HEATER WITH INTEGRAL THERMOSTAT. 208 VOLT.
THERMOSTATS	48"	SURFACE MOUNT FLUORESCENT LIGHT FIXTURE	FUSED DISCONNECT SWITCH	1.5	1.5 KILOWATT RECESSED WALL HEATER WITH INTEGRAL THERMOSTAT. 120 VOLT.
DOOR HOLDERS	75" TO CENTER	OPEN CHANNEL FLUORECENT. TYPE INDICATED	TRANSFORMER	1.2	1250 WATT BASEBOARD HEATER CONTROLLED BY WALL THERMOSTAT. 120 VOLT.
EMERGENCY CALL	40"	WALL MOUNT FIXTURE. TYPE INDICATED	ELECTRICAL PANEL OR ENCLOSURE. DESIGNATION NOTED	1.0	1 KILOWATT RECESSED WALL HEATER WITH INTEGRAL THERMOSTAT. 120 VOLT.
SPEAKERS & PULL STATIONS	42"	ELECTRICAL MOTOR LOAD	CONTROL CABLE	0.7	750 WATT BASEBOARD HEATER CONTROLLED BY WALL THERMOSTAT. 120 VOLT.
WALL LIGHTS IN CORRIDORS	80" TO CENTER LINE	RECESSED FIXTURE. TYPE INDICATED	TELEVISION SIGNAL CONNECTION	0.7B	750 WATT LIQUID FILLED ELEC. HYDRONIC BASEBOARD HEATER CONTROLLED BY WALL THERMOSTAT. BERKO HBB750. 120 VOLT.
EXTERIOR WALL LIGHTS	96" TO CENTER LINE (U.N.O.)	AREA OF RESCUE SIGN - SEE LIGHTING SCHEDULE	TELEPHONE CONNECTION	0.5	500 WATT RECESSED WALL HEATER WITH INTEGRAL THERMOSTAT. 120 VOLT.
OUTLETS (COMMON AREAS)	17"	WIRE ALL EXIT LIGHTS TO NEAREST EM. LIGHT CIRCUIT.	EMERGENCY PULL SWITCH	0.5B	500 WATT BASEBOARD HEATER CONTROLLED BY WALL THERMOSTAT. 120 VOLT.
OUTLETS (SUITE AREAS)	24"	S.P.S.T. SWITCH, DIMMER SWITCH, FAN SPEED CONTROL SWITCH	THERMOSTAT		
LIGHT SWITCH	44"	3-WAY SWITCH, PILOT-LIGHT SWITCH, KEYED SWITCH	TRANSFORMER		
COUNTER OUTLETS	44" TO BOTTOM	AUTOMATIC WALL SWITCH	CEILING MOUNTED OCCUPANCY SENSOR		
STAIR LIGHTS	2" TO BOTTOM, ABOVE TREAD	DUPLEX RECEPTACLE, SPLIT WIRED WITH 1/2 SWITCHED, ABOVE COUNTER	JUNCTION BOX		
ELECTRICAL PANEL	80" TO TOP OF PANEL	DOUBLE DUPLEX (TWO) DUPLEX RECEPTACLE	"E" INDICATES WIRING TO EMERGENCY POWER. SEE SCHEDULE ON E2.1.		
BATHROOM WALL VANITY LIGHT	6'-11" TO CENTER (SEE NOTE #1)	FLOOR BOX RECEPTACLE	WEATHER PROOF		
		208V, 1P RECEPTACLE - 20A EXCEPT WHEN NOTED	GFI		
		THROUGH WALL PTAC UNIT. SEE MECHANICAL.	CVO		
<b>NOTES:</b>					
1. CENTER OVER CABINET BASE PROVIDE BACKING IF REQUIRED.					
2. INFORMATION SHOWN FOR REFERENCE. CONFORM TO ARCH, ADA, AND CODE REQUIREMENTS.					



**lenity**  
architecture  
3150 NE TERRY  
PORTLAND, OREGON 97201  
PHONE (503) 586-7401

**COLSON AND COLSON**  
GENERAL CONTRACTOR, INC.  
2280 MCGILCHRIST STREET, SUITE 200  
SALEM, OREGON, 97302  
PHONE (503) 586-7401

**PORTLAND RESIDENCE**  
802 OCEAN AVE. PORTLAND, MAINE 04103

**WING 'C' POWER PLAN**

<b>DATE</b>	8/28/2015
<b>REVISED DATE</b>	9/22/2015
	2/2/2016
	7/18/2016
<b>SHEET</b>	E1.6P