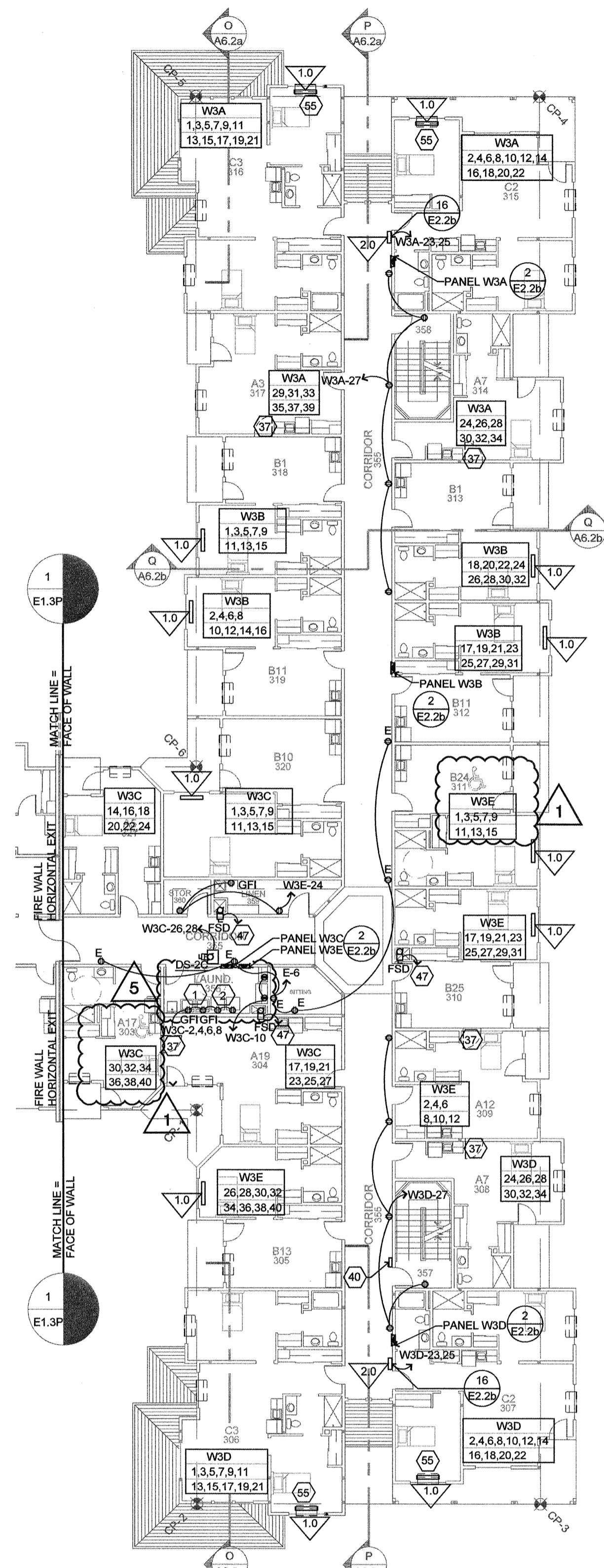
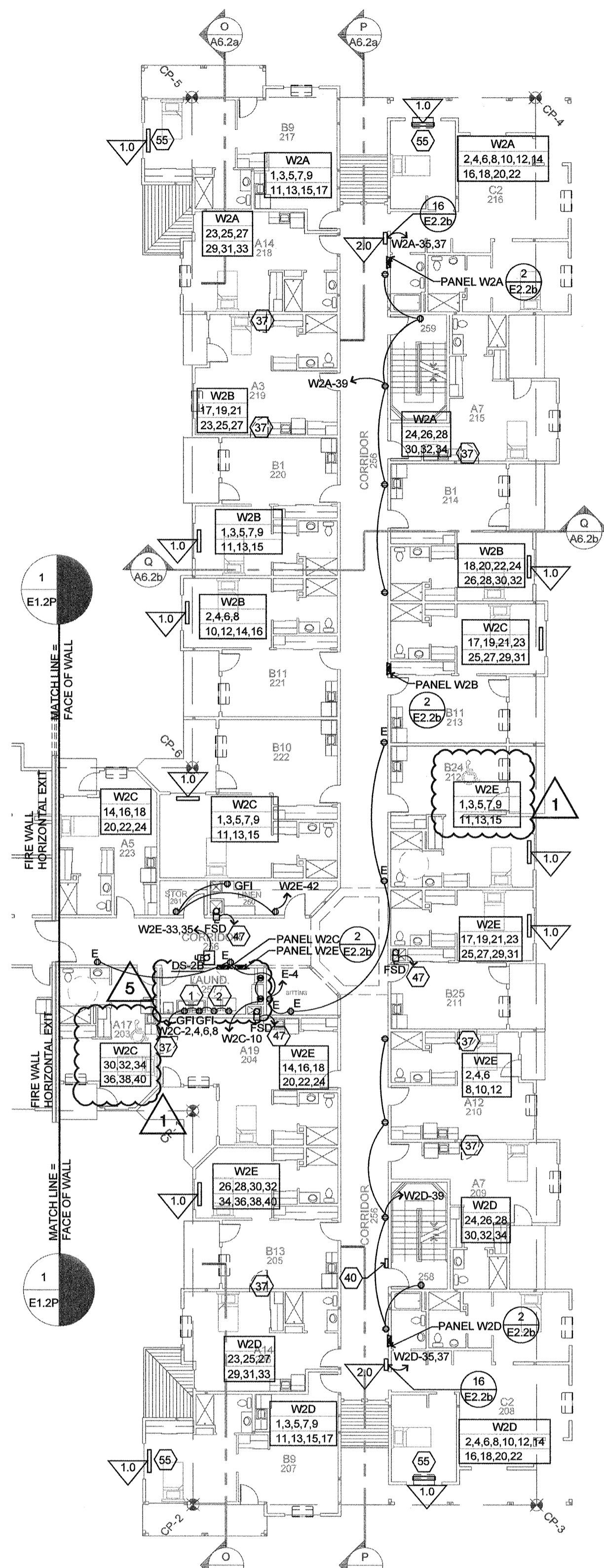


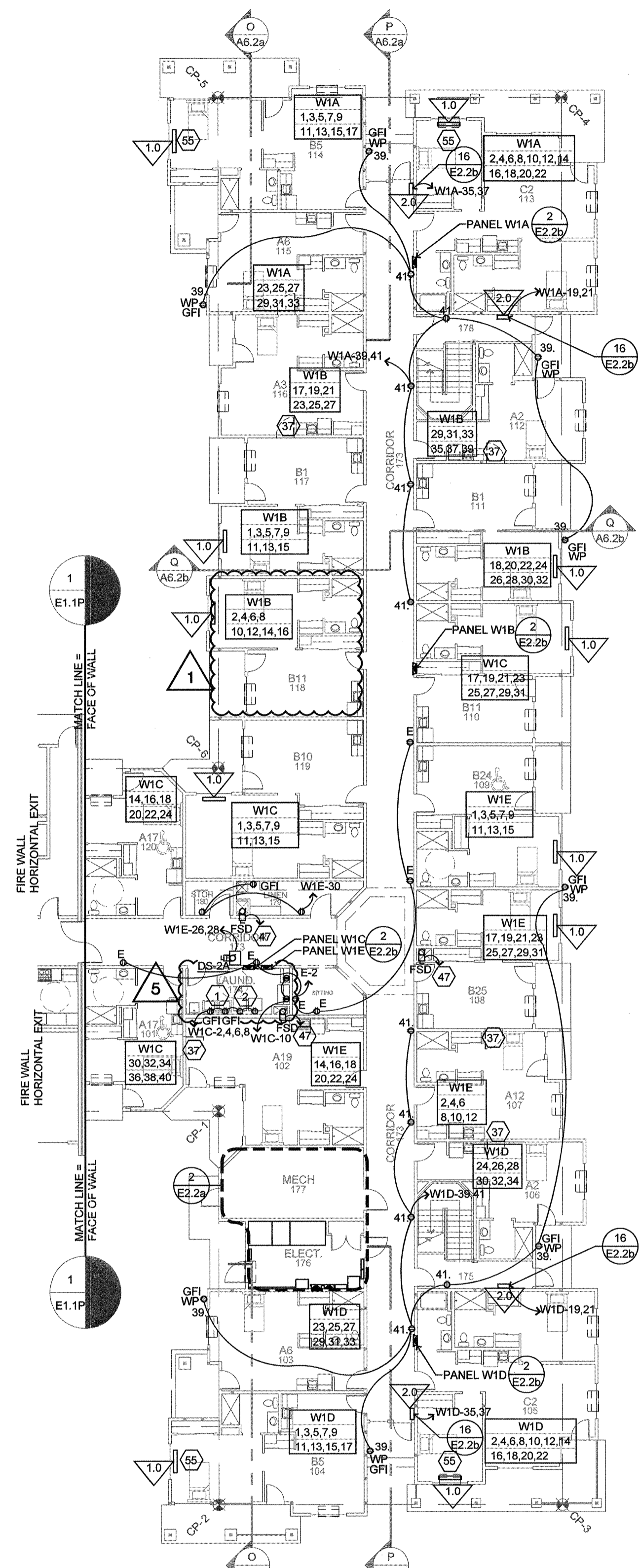
4 FOURTH FLOOR - POWER
E1.5P SCALE: 1/16" = 1'-0"



3 THIRD FLOOR - POWER
E1.5P SCALE: 1/16" = 1'-0"



2 SECOND FLOOR - POWER
E1.5P SCALE: 1/16" = 1'-0"



1 FIRST FLOOR - POWER
E1.5P SCALE: 1/16" = 1'-0"

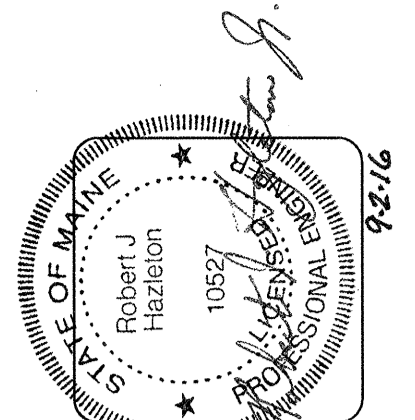
ELECTRICAL MOUNTING HEIGHTS	
ITEM	HEIGHT A.F.F. TO CENTER LINE:
THERMOSTATS	48"
DOOR HOLDERS	76" TO CENTER
EMERGENCY CALL	40"
SPEAKERS & PULL STATIONS	42"
WALL LIGHTS IN CORRIDORS	80" TO CENTER LINE
EXTERIOR WALL LIGHTS	96" TO CENTER LINE (J.N.O.)
OUTLETS (COMMON AREAS)	17"
OUTLETS (SUITE AREAS)	24"
LIGHT SWITCH	44"
COUNTER OUTLETS	44" TO BOTTOM
STAIR LIGHTS	2" TO BOTTOM, ABOVE TREAD
ELECTRICAL PANEL	80" TO TOP OF PANEL
BATHROOM WALL VANITY LIGHT	6'-11" TO CENTER (SEE NOTE #1)

ELECTRICAL LEGEND	
	RECESSED FLUORESCENT LIGHT FIXTURE
	SURFACE MOUNT FLUORESCENT LIGHT FIXTURE
	OPEN CHANNEL FLUORESCENT, TYPE INDICATED
	WALL MOUNT FIXTURE, TYPE INDICATED
	SURFACE MOUNT OR CHAIN HUNG FIXTURE, TYPE INDICATED
	RECESSED FIXTURE, TYPE INDICATED
	AREA OF RESCUE SIGN - SEE LIGHTING SCHEDULE
	EXIT LIGHT, DIRECTIONAL ARROWS AS INDICATED.
	WIRE ALL EXIT LIGHTS TO NEAREST EM. LIGHT CIRCUIT.
	S.P.S.T. SWITCH, DIMMER SWITCH, FAN SPEED CONTROL SWITCH
	3-WAY SWITCH, PILOT LIGHT SWITCH, KEYED SWITCH
	AUTOMATIC WALL SWITCH
	DUPLEX RECEPTACLE, SPLIT WIRED WITH 1/2 SWITCHED, ABOVE COUNTER
	DOUBLE DUPLEX (TWO) DUPLEX RECEPTACLE
	FLOOR BOX RECEPTACLE
	208V, 1P RECEPTACLE - 20A EXCEPT WHEN NOTED
	THROUGH WALL PTAC UNIT, SEE MECHANICAL.
	DISCONNECT SWITCH
	FUSED DISCONNECT SWITCH
	TRANSFORMER
	ELECTRICAL PANEL OR ENCLOSURE, DESIGNATION NOTED
	ELECTRICAL MOTOR LOAD
	CONTROL CABLE
	SPECIAL RECEPTACLE
	TELEVISION SIGNAL CONNECTION
	TELEPHONE CONNECTION
	EMERGENCY PULL SWITCH
	THERMOSTAT
	TIMESWITCH
	TRANSFORMER
	CEILING MOUNTED OCCUPANCY SENSOR
	JUNCTION BOX
	"E.T." INDICATES WIRING TO EMERGENCY POWER. SEE SCHEDULE ON E.T.
	WEATHER PROOF
	GROUND FAULT CURRENT INTERRUPTING RECEPTACLE
	CONVENIENCE OUTLET

ELECTRICAL HEAT SCHEDULE	
2.0	2 KILOWATT RECESSED WALL HEATER WITH INTEGRAL THERMOSTAT. 208 VOLT.
1.5	1.5 KILOWATT RECESSED WALL HEATER WITH INTEGRAL THERMOSTAT. 120 VOLT.
1.2	1250 WATT BASEBOARD HEATER CONTROLLED BY WALL THERMOSTAT. 120 VOLT.
1B	1 KILOWATT RECESSED WALL HEATER WITH INTEGRAL THERMOSTAT. 120 VOLT.
1.0	1 KILOWATT BASEBOARD HEATER CONTROLLED BY WALL THERMOSTAT. 120 VOLT.
0.7	750 WATT BASEBOARD HEATER CONTROLLED BY WALL THERMOSTAT. 120 VOLT.
0.7B	750 WATT LIQUID FILLED ELEC. HYDRONIC BASEBOARD HEATER CONTROLLED BY WALL THERMOSTAT. BERKO HBB750. 120 VOLT.
0.5	500 WATT RECESSED WALL HEATER WITH INTEGRAL THERMOSTAT. 120 VOLT.
0.5B	500 WATT BASEBOARD HEATER CONTROLLED BY WALL THERMOSTAT. 120 VOLT.

SWITCHES AND RECEPTACLES SHALL BE LEVITON DECORA SERIES (WHITE ONLY) UNLESS SPECIFIED OTHERWISE. SEE DRAWING E2.1 WIRING DEVICES.

SEE E1.1L FOR ELECTRICAL KEYED NOTES.



lenity
architecture
3150 Kellie Court SE, Salem, Oregon 97302
PHONE (503) 599-0585

COLSON AND COLSON
GENERAL CONTRACTOR, INC.
2280 MCGILCHRIST STREET SE, SUITE 200
SALEM, OREGON, 97302
PHONE (503) 586-7401

PORTLAND
RETIREMENT RESIDENCE
802 OCEAN AVE. PORTLAND, MAINE 04103

WING 'B'
POWER PLAN
E1.5P

DATE
8/28/2015
REVISED DATE
9/22/2015
2/2/2016
7/18/2016

SHEET
E1.5P

