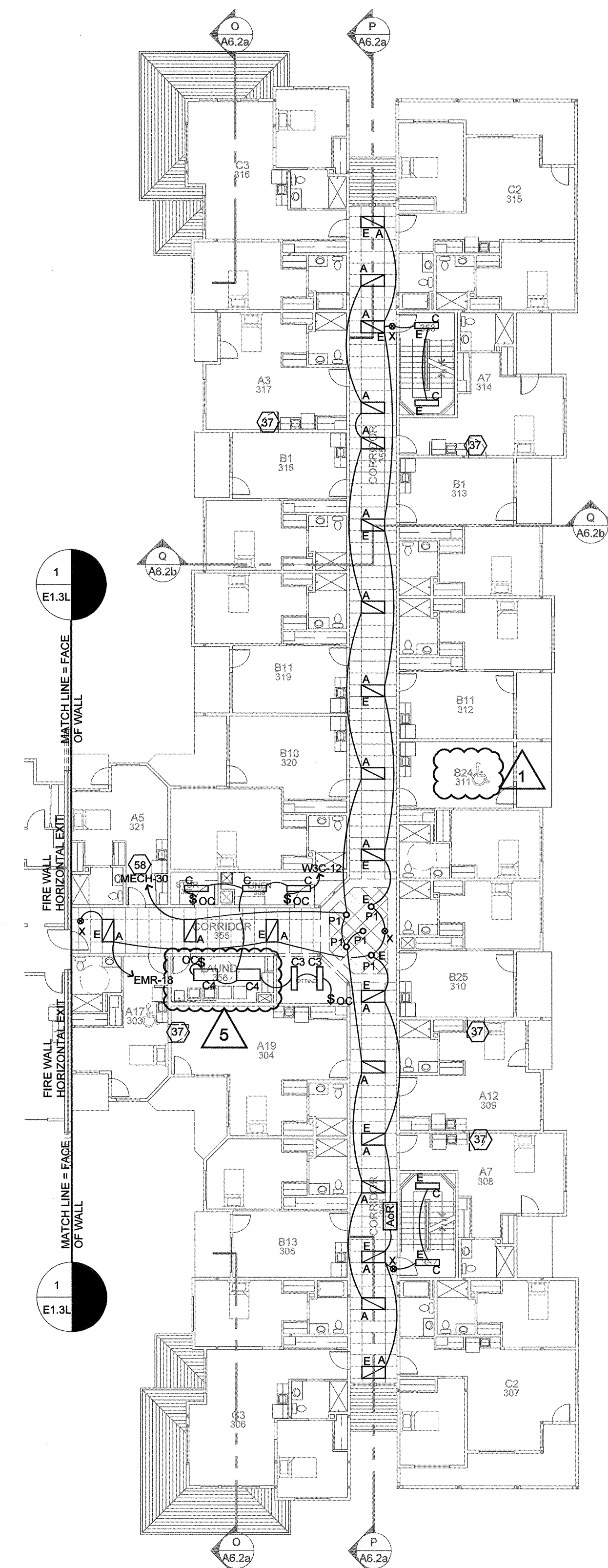
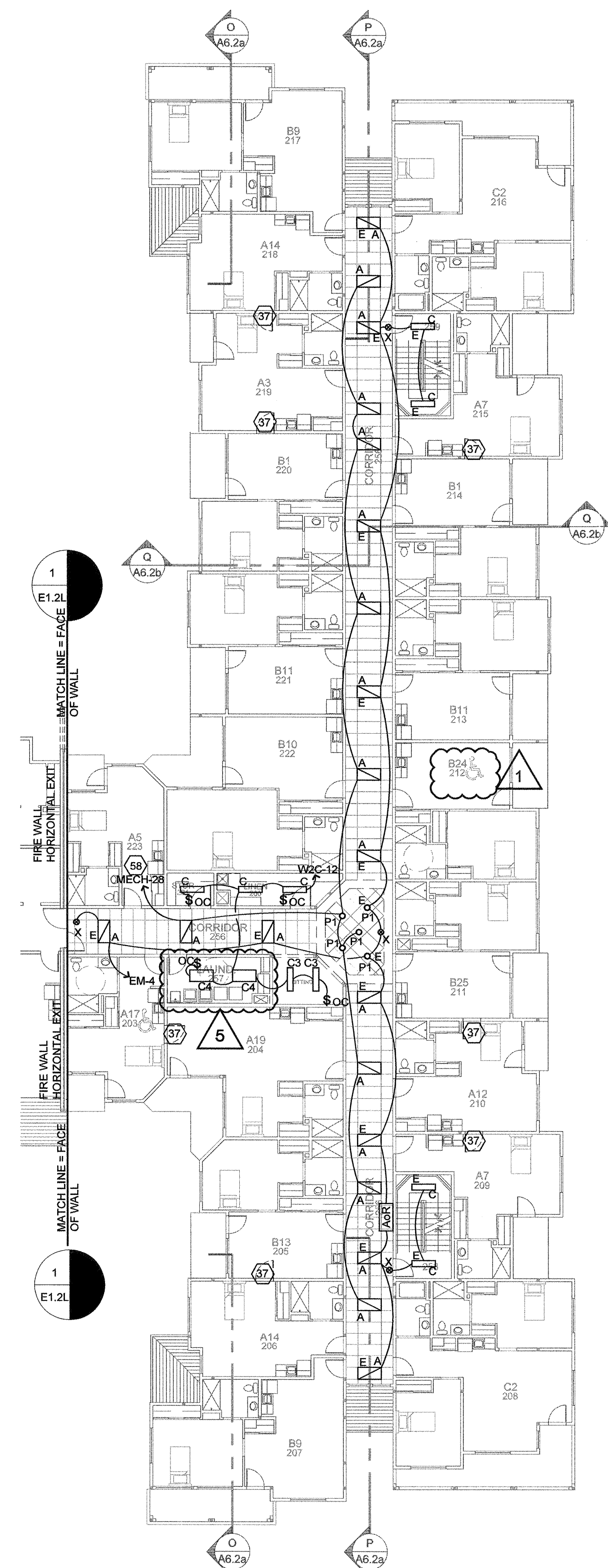


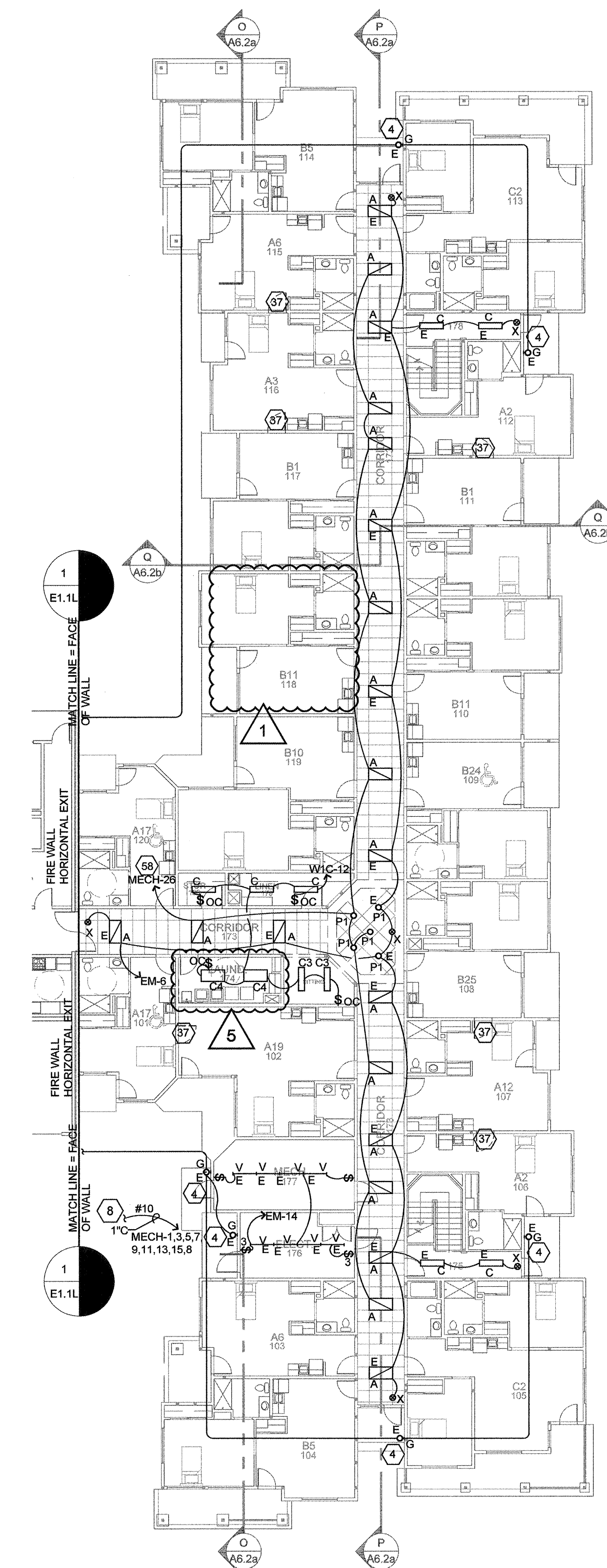
4 FOURTH FLOOR - LIGHTING
E1.5L SCALE: 1/16" = 1'-0"



3 THIRD FLOOR - LIGHTING
E1.5L SCALE: 1/16" = 1'-0"



2 SECOND FLOOR - LIGHTING
E1.5L SCALE: 1/16" = 1'-0"

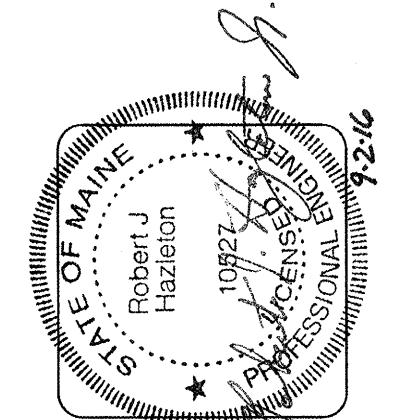


1 FIRST FLOOR - LIGHTING
E1.5L SCALE: 1/16" = 1'-0"

ELECTRICAL MOUNTING HEIGHTS		ELECTRICAL LEGEND	
ITEM:	HEIGHT A.F.F. TO CENTER LINE:	RECESSED FLUORESCENT LIGHT FIXTURE	DISCONNECT SWITCH
THERMOSTATS	48"	SURFACE MOUNT FLUORESCENT LIGHT FIXTURE	FUSED DISCONNECT SWITCH
DOOR HOLDERS	75" TO CENTER	OPEN CHANNEL FLUORESCENT, TYPE INDICATED	TRANSFORMER
EMERGENCY CALL	40"	WALL MOUNT FIXTURE, TYPE INDICATED	ELECTRICAL PANEL OR ENCLOSURE, DESIGNATION NOTED
SPEAKERS & PULL STATIONS	42"	SURFACE MOUNT OR CHAIN HUNG FIXTURE, TYPE INDICATED	ELECTRICAL MOTOR LOAD
WALL LIGHTS IN CORRIDORS	80" TO CENTER LINE	RECESSED FIXTURE, TYPE INDICATED	CONTROL CABLE
EXTERIOR WALL LIGHTS	96" TO CENTER LINE (L.N.O.)	AREA OF RESCUE SIGN - SEE LIGHTING SCHEDULE	SPECIAL RECEPTACLE
OUTLETS (COMMON AREAS)	17"	EXIT LIGHT, DIRECTIONAL ARROWS AS INDICATED, WIRE ALL EXIT LIGHTS TO NEAREST EM. LIGHT CIRCUIT.	TELEVISION SIGNAL CONNECTION
OUTLETS (SUITE AREAS)	24"	S.P.S.T. SWITCH, DIMMER SWITCH, FAN SPEED CONTROL SWITCH	TELEPHONE CONNECTION
LIGHT SWITCH	44"	3-WAY SWITCH, PILOT LIGHT SWITCH, KEYED SWITCH	EMERGENCY PULL SWITCH
COUNTER OUTLETS	44" TO BOTTOM	AUTOMATIC WALL SWITCH	THERMOSTAT
STAIR LIGHTS	2" TO BOTTOM, ABOVE TREAD	DUPLEX RECEPTACLE, SPLIT WIRED WITH 1/2 SWITCHED, ABOVE COUNTER	TIMESWITCH
ELECTRICAL PANEL	80" TO TOP OF PANEL	DOUBLE DUPLEX (TWO) DUPLEX RECEPTACLE	TRANSFORMER
BATHROOM WALL VANITY LIGHT	8"-11" TO CENTER (SEE NOTE #1)	FLOOR BOX RECEPTACLE	CEILING MOUNTED OCCUPANCY SENSOR
		208V, 1P RECEPTACLE - 20A EXCEPT WHEN NOTED	JUNCTION BOX
		THROUGH WALL PTAC UNIT. SEE MECHANICAL.	"E" INDICATES WIRING TO EMERGENCY POWER. SEE SCHEDULE ON E2.1.
			WEATHER PROOF
			GFI
			GROUND FAULT CURRENT INTERRUPTING RECEPTACLE
			CONVENIENCE OUTLET

NOTES:
1. CENTER OVER CABINET BASE PROVIDE BACKING IF REQUIRED.
2. INFORMATION SHOWN FOR REFERENCE. CONFORM TO ARCH, ADA, AND CODE REQUIREMENTS.

SEE E1.1L FOR ELECTRICAL KEYED NOTES AND GENERAL NOTES.



lenity
architecture
350 Ketta Court, SE, Salem, Oregon 97301
#503.399.0580 #lenityarchitecture.com

COLSON AND COLSON
GENERAL CONTRACTOR, INC.
2280 MCGILCHRIST STREET, SUITE 200
SALEM, OREGON, 97302
PHONE (503) 586-7401

PORTLAND
RETIREMENT RESIDENCE
802 OCEAN AVE. PORTLAND, MAINE 04103

WING 'B'
LIGHT/REF. CLG.
PLAN
E1.5L

DATE: 8/28/2015
REVISED DATE:
9/22/2015
2/2/2016
7/18/2016

SHEET
E1.5L

