

lenity
architecture
3700 Kenilworth Street, Suite 200
Portland, Oregon 97201
P: 503.399.1030 F: 503.399.0555
www.lenityarchitecture.com

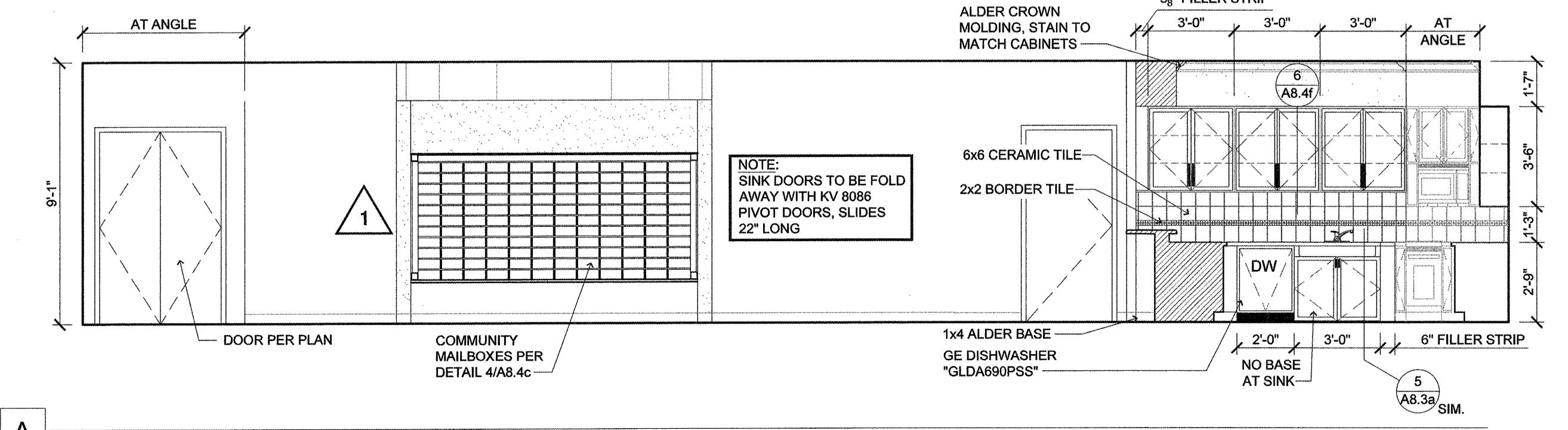
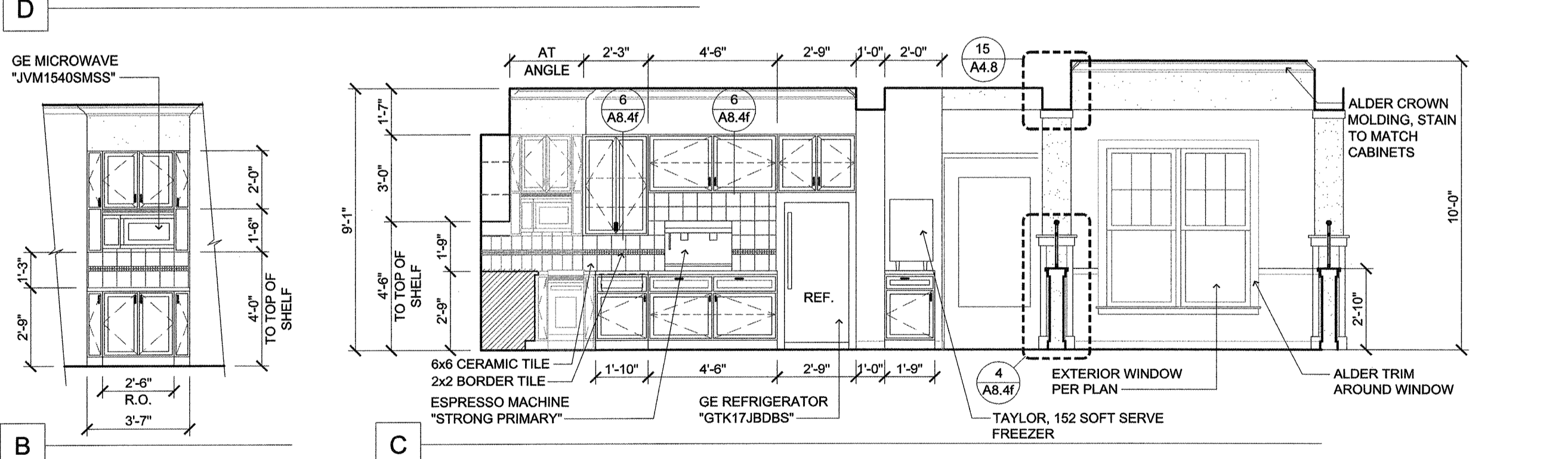
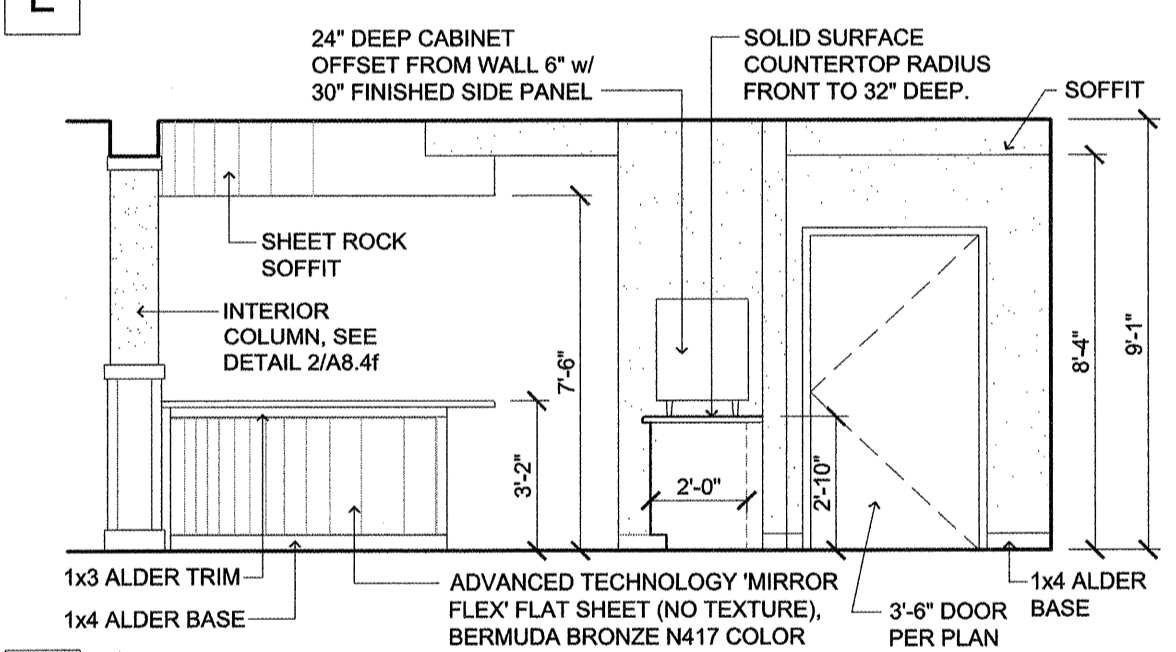
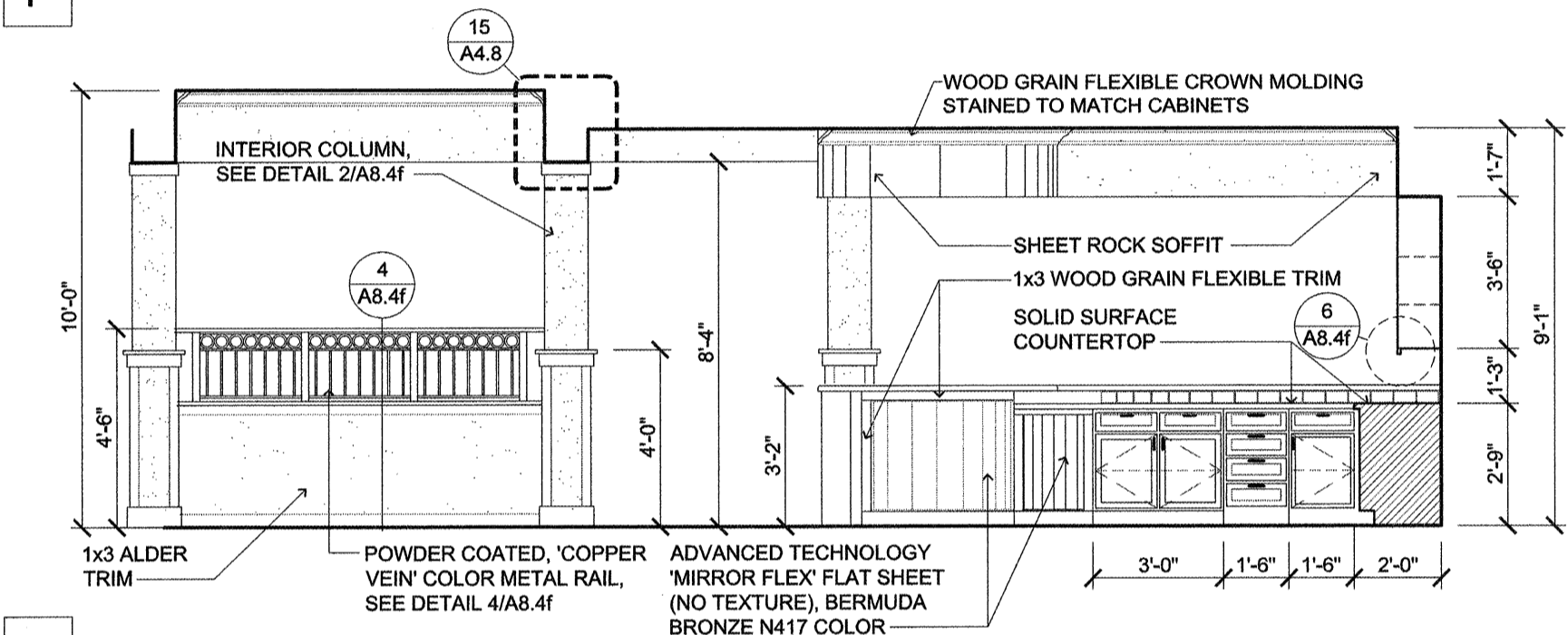
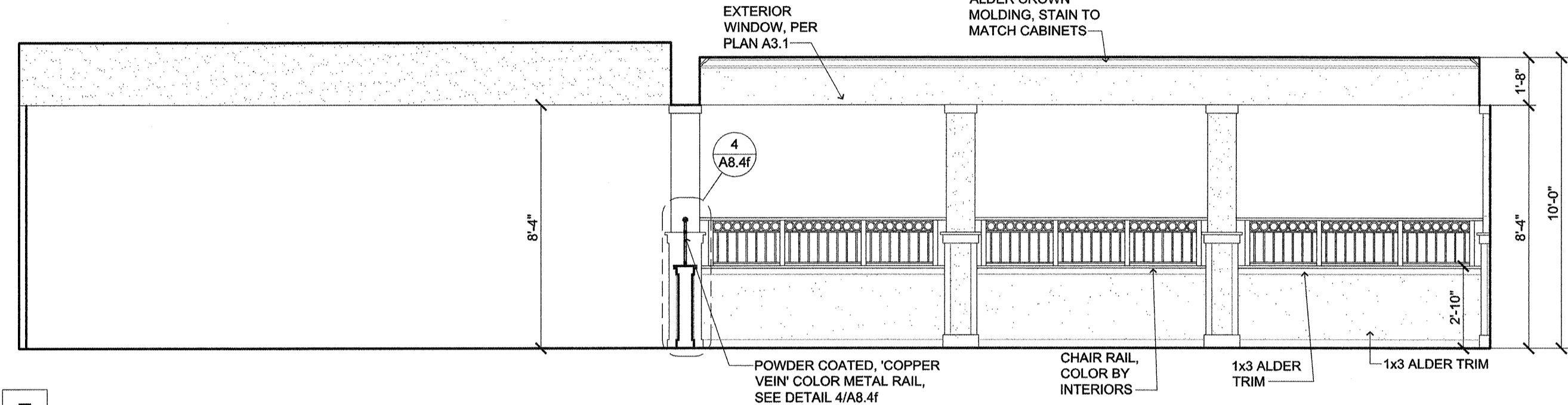
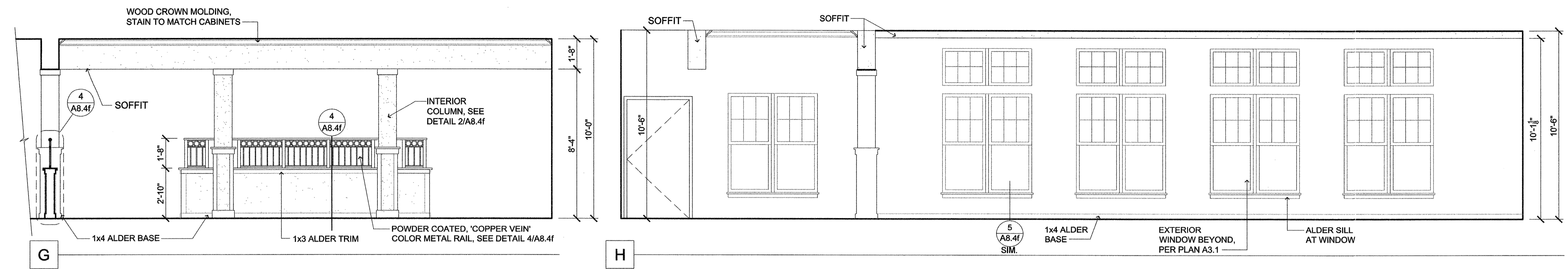
COLSON AND COLSON
GENERAL CONTRACTOR, INC.
2280 McILCHRIST STREET SE, SUITE 200
SALEM, OREGON, 97302
PHONE (503) 586-7401

PORTLAND
RETIREMENT RESIDENCE
802 OCEAN AVE. PORTLAND, MAINE 04103

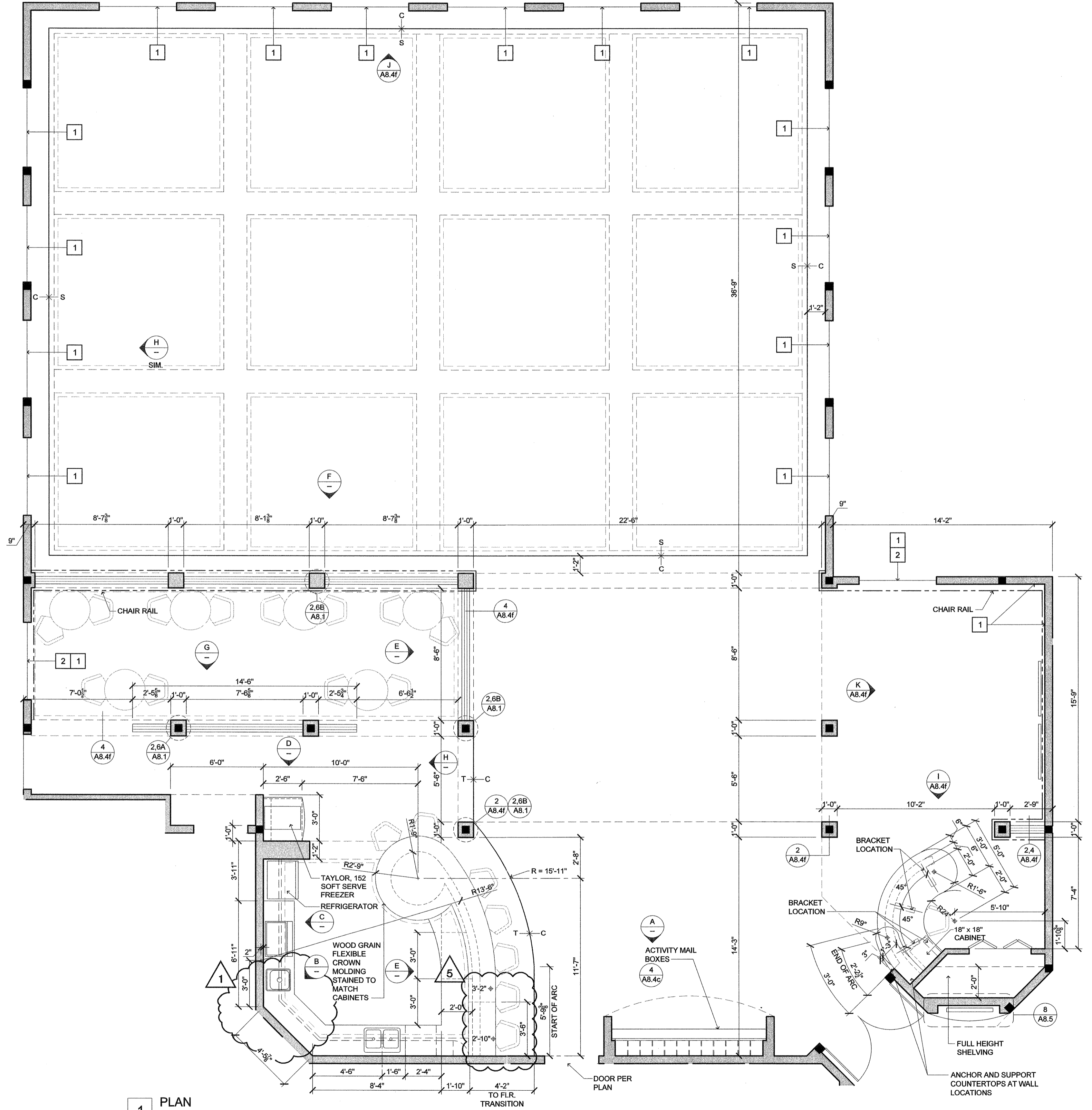
INTERIOR
ELEVATIONS
AND DETAILS

DATE
8/28/2015
REVISED DATE
9/22/2015
2/2/2016
7/18/2016

SHEET
A8.4e



- BISTRO/ACTIVITY LEGEND**
- 1 - WINDOW SILL, SEE 5/A8.4f
 - 2 - TRIM AT WINDOW
 - - - CHAIR RAIL
 - - - FLOOR FINISH TRANSITION
 - S - SPACIA FLOORING PER INTERIORS
 - T - TILE FLOORING PER INTERIORS
 - C - CARPET FLOORING PER INTERIORS
- NOTE: ALL ALDER TO BE STAINED TO MATCH BISTRO CABINETS.



1 PLAN
INTERIOR ELEVATIONS
(CAFE / BISTRO)
SCALE: 1/4" = 1'-0"