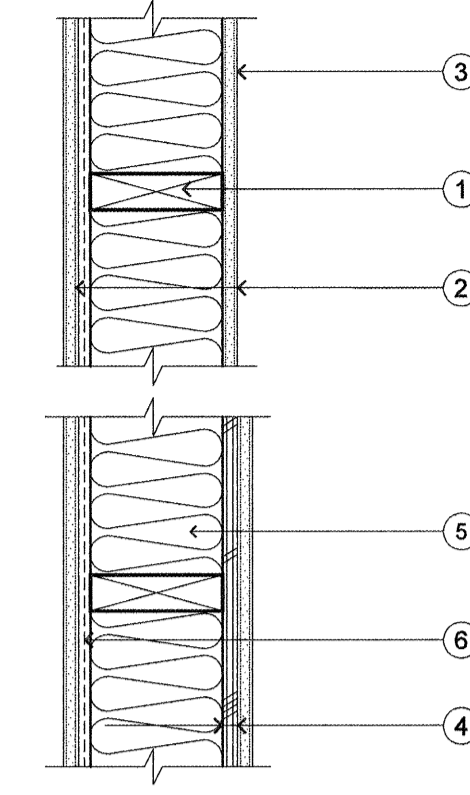
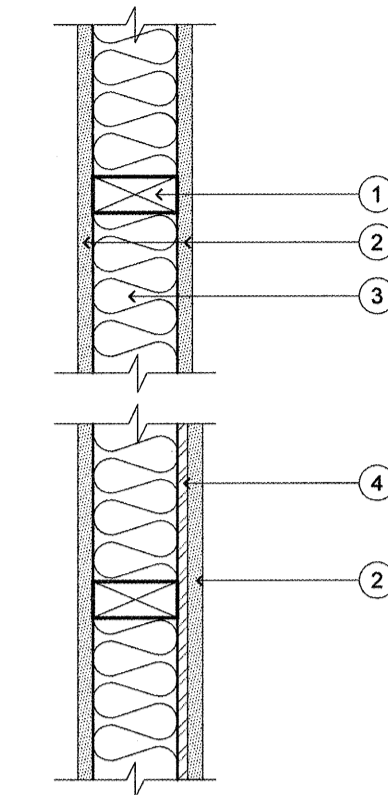
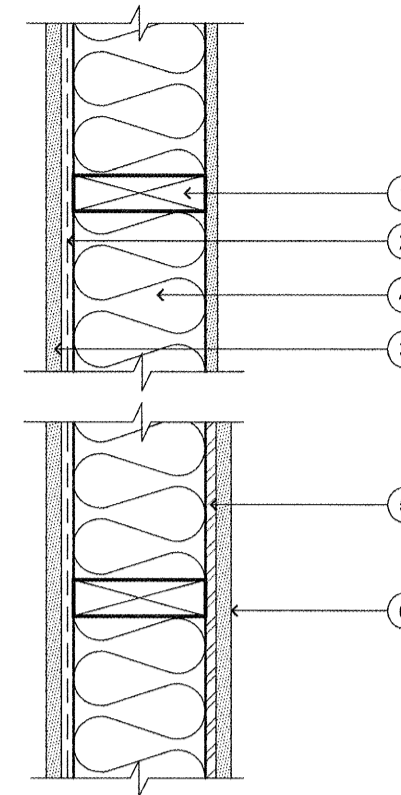
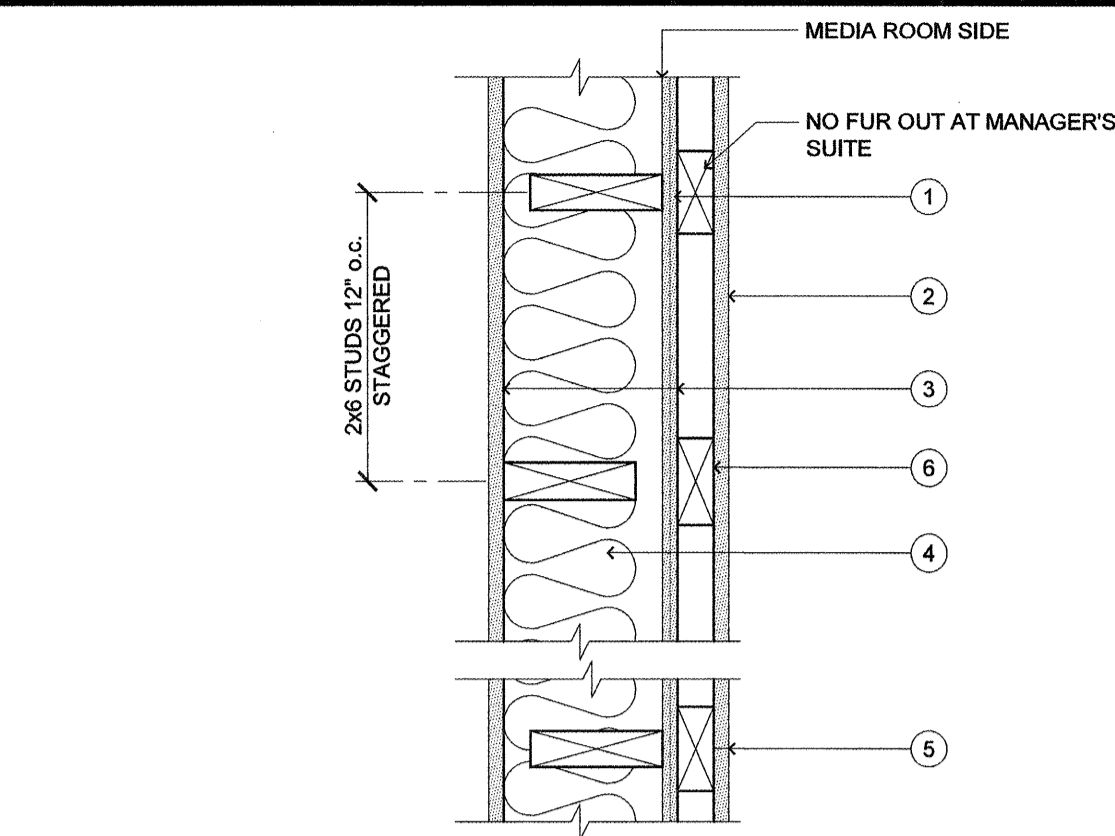
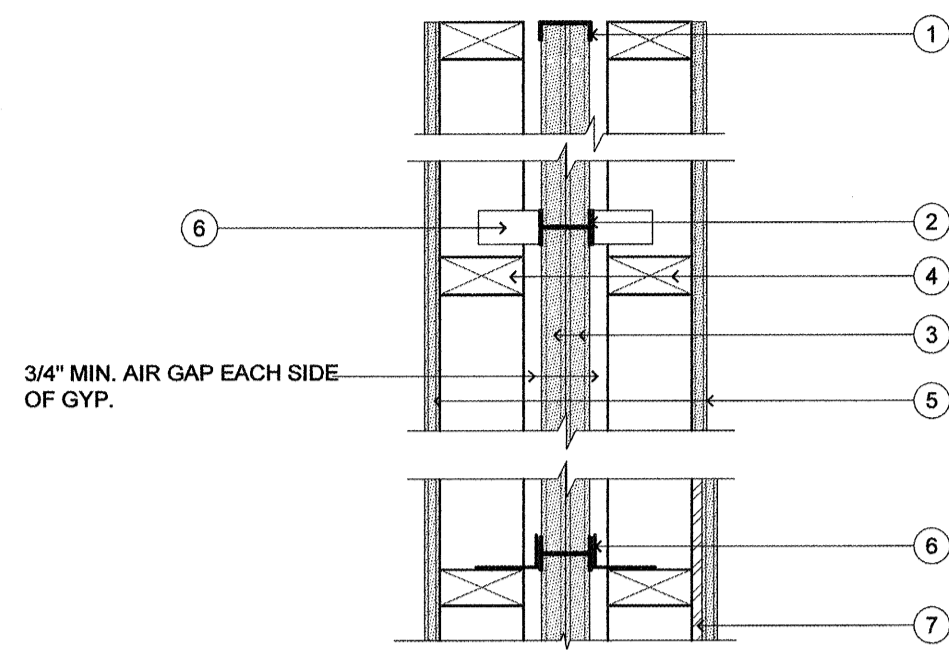


NOTE:  
- WALLS: R-21  
- ROOF/TYPIC: R-49  
- SLAB, VERT. R-10 FOR 24"  
- DOOR U-VALUE: 0.7  
- WINDOW U-VALUE: 0.3

JOINTS BETWEEN GYPSUM BOARDS IN SYSTEMS RATED FOR FIRE, SOUND, OR SHEAR MUST BE CONSTRUCTED WITH THE GYPSUM BOARD EDGES IN MODERATE CONTACT. MODERATE CONTACT MEANS THAT THE EDGES ARE ESSENTIALLY TOUCHING EACH OTHER. IT IS POSSIBLE FOR THE GYPSUM BOARD EDGES TO BE IN MODERATE CONTACT YET NOT TOUCH ALONG THE ENTIRE LENGTH OF THE JOINT. THEREFORE, IN GYPSUM BOARD SYSTEMS RATED FOR FIRE, SOUND, OR SHEAR, SMALL GAPS SPACED SPORADICALLY ALONG THE JOINT ARE ACCEPTABLE AS LONG AS THE BOARD EDGES ARE ESSENTIALLY TOUCHING ONE ANOTHER. GAPS UP TO 1/8" MUST BE FILLED WITH A THROUGH-PENETRATION SEALANT (FIRE CAULK). GAPS OVER 1/8" ARE NOT ACCEPTABLE.

NOTE:  
ALL ASSEMBLIES THIS SHEET MUST BE INSTALLED PER ASSEMBLY NUMBER LISTED ON DRAWING. ANY SUBSTITUTIONS TO ASSEMBLIES MUST BE SUBMITTED TO ARCHITECT FOR REVIEW AND APPROVAL. SUBJECT TO LOCAL APPROVAL



NOTE:  
PER GENERAL EXPLANATORY NOTE #16 IN GYPSUM ASSOCIATION BOOK, GREATER STUD SIZES ARE PERMITTED. SPACING INDICATED IN ASSEMBLY ARE MAXIMUMS.

NOTE:  
PER GENERAL EXPLANATORY NOTE #16 IN GYPSUM ASSOCIATION BOOK, GREATER STUD SIZES ARE PERMITTED. SPACING INDICATED IN ASSEMBLY ARE MAXIMUMS.

NOTE:  
PER GENERAL EXPLANATORY NOTE #16 IN GYPSUM ASSOCIATION BOOK, GREATER STUD SIZES ARE PERMITTED. SPACING INDICATED IN ASSEMBLY ARE MAXIMUMS.

**CONSTRUCTION ASSEMBLY**  
UL - DESIGN NUMBER U336

NOTES	DESCRIPTION
1	SEPARATION WALL: (MAX HEIGHT - 66") FLOOR, INTERMEDIATE OR TOP WALL - 2" WIDE CHANNEL SHAPED WITH 1" LONG LEGS FORMED FROM NO. 25 MSG GALV STEEL, SECURED WITH SUITABLE FASTENERS SPACED 24" O.C.
2	METAL STUDS - STEEL MEMBERS FORMED FROM NO. 25 MSG GALV STEEL HAVING "H"-SHAPED FLANGED SPACED 24" O.C. OVERALL DEPTH 2" AND FLANGE WIDTH 1-3/8".
3	1" SHEETROCK BRAND GYPSUM LINER PANELS - (2) LAYERS OF 1" THICK GYP. WALLBOARD LINER PANELS, BEARING THE UL CLASSIFICATION MARK, SUPPLIED IN 24" WIDTHS. VERTICAL EDGES OF PANELS FRICTION FITTED INTO "H"-SHAPED STUDS.
4	PROTECTED WALL (BEARING OR NONBEARING WALL) WOOD STUDS - 2x4 STUDS, SEE A3'S FOR WALL SIZE. MAX SPACING 24" O.C. STUDS CROSS BRACED AT MID-HEIGHT WHERE NECESSARY FOR CLIP ATTACHMENT. MIN. 3/4" SEPARATION BETWEEN WOOD FRAMING AND FIRE SEPARATION WALL.
5	GYPSUM BOARD - CLASSIFIED OR UNCLASSIFIED - MIN. 1/2" THICK, 4" WIDE, APPLIED EITHER HORIZ. OR VERT. WALLBOARD ATTACHED TO STUDS WITH 1-1/4" LONG STEEL DRYWALL NAILS SPACED 8" O.C. VERT. JOINTS LOCATED OVER STUDS.
6	ATTACHMENT CLIPS - ALUMINUM ANGLE, 0.063" THICK, 2" WIDE WITH 2" AND 2-1/4" LEGS. CLIPS SECURED WITH TYPE 'S' SCREWS 3/8" LONG TO 'H' STUDS AND WITH TYPE 'W' SCREWS 1-1/4" LONG TO WOOD FRAMING THROUGH HOLES PROVIDED IN CLIP. (A) CLIP PLACEMENT FOR SEPARATION WALLS UP TO 23" HIGH. SPACE CLIPS A MAX OF 10" O.C. VERT. BETWEEN WOOD FRAMING AND 'H' STUDS. (B) CLIP PLACEMENT FOR SEPARATION WALLS UP TO 41" HIGH. SPACE CLIPS AS DESCRIBED IN ITEM (A) FOR THE UPPER 24" REMAINING WALL AREA BELOW REQUIRES CLIPS SPACED A MAX 5" O.C. VERT. BETWEEN WOOD FRAMING AND 'H' STUDS. (C) CLIP PLACEMENT FOR SEPARATION WALLS UP TO 66" HIGH. SPACE CLIPS AS DESCRIBED IN ITEM (A) FOR UPPER 24". SPACE CLIPS AS DESCRIBED IN ITEM (B) FOR NEXT 20" BELOW THE UPPER 24". REMAINING WALL AREA BELOW REQUIRES CLIPS SPACED A MAX OF 40" O.C. VERT. BETWEEN WOOD FRAMING AND 'H' STUDS.
7	SHEAR PANEL (AS OCCURS) SEE STRUC. SHEAR WALL PLAN.

ACTUAL FIRE RESISTANCE RATING 2 HOUR FIRE

**CONSTRUCTION ASSEMBLY**  
UL - DESIGN NUMBER U340

NOTES	DESCRIPTION
1	WOOD STUDS - 2x6 AT 12" O.C. STAGGERED w/ 2x10 PLATES
2	(QUIETROCK 530) - 5/8" THICK, 4" WIDE PANELS, APPLIED VERTICALLY TO STUDS AND BEARING PLATES WITH 1-5/8" LONG, NO. 6, TYPE S, COARSE THREADED SCREWS SPACED AT 8" O.C. ALONG THE PERIMETER OF THE PANELS AND 12" O.C. IN THE FIELD. VERTICAL JOINTS CENTERED OVER STUDS AND STAGGERED ONE STUD CAVITY ON OPPOSITE SIDES OF STUD. HORIZONTAL JOINTS OF VERTICALLY APPLIED PANELS TO BE STAGGERED 4" ON OPPOSITE SIDES OF THE WALL. HORIZONTAL JOINTS OF VERTICALLY APPLIED PANELS TO BE SUPPORTED BY STUDS.
3	(SHEET ROCK BRAND FIRECODE) - 5/8" THICK, 4" WIDE PANELS, APPLIED VERTICALLY TO STUDS AND BEARING PLATES WITH 1-5/8" LONG, NO. 6, TYPE S, COARSE THREADED SCREWS SPACED AT 8" O.C. ALONG THE PERIMETER OF THE PANELS AND 12" O.C. IN THE FIELD. VERTICAL JOINTS CENTERED OVER STUDS AND STAGGERED ONE STUD CAVITY ON OPPOSITE SIDES OF STUD. HORIZONTAL JOINTS OF VERTICALLY APPLIED PANELS TO BE STAGGERED 4" ON OPPOSITE SIDES OF THE WALL. HORIZONTAL JOINTS OF VERTICALLY APPLIED PANELS TO BE BACKED WITH 2x4 WOOD BACKING.
4	(QUIETROCK NOISE CONTROL BATT) - UL CLASSIFIED GLASS FIBER INSULATION WITH OR WITH OUT KRAFT PAPER FACING, NOMINAL 5-1/2" THICK, NOMINAL DENSITY OF 0.95 PCF, FASTENED TO WOOD STUDS USING METAL FASTENERS TO COMPLETELY FILL THE STUD CAVITIES.
5	JOINTS AND SCREWHEADS - JOINT COMPOUND APPLIED IN TWO COATS TO JOINTS AND SCREW HEADS. PAPER TAPE, 2" WIDE, EMBEDDED IN FIRST LAYER OF COMPOUND OVER ALL JOINT.
6	2x4 FLAT FURRING, 16" O.C.

ACTUAL FIRE RESISTANCE RATING 1 HOUR FIRE

SOUND RATING STC 57+

**CONSTRUCTION ASSEMBLY**  
GA-600-2012 FIRE RESISTANCE DESIGN MANUAL (GA FILE NO. WP 3243)

NOTES	DESCRIPTION
1	2x6 STUDS AT 16" O.C. U.O.N.
2	RESILIENT CHANNELS 24" O.C. ATTACHED AT TIGHT ANGLES TO ONE SIDE OF 2x6 WOOD STUDS 16" OR 24" O.C. WITH 1-1/4" TYPE S DRYWALL SCREWS. NOTE: RESILIENT CHANNELS TO BE PLACED OPPOSITE OF PLYWD. AS OCCURS AT UNIT PARTY WALLS.
3	ONE LAYER 5/8" TYPE 'X' GYPSUM WALLBOARD OR GYPSUM VENEER BASE APPLIED AT RIGHT ANGLES TO CHANNELS WITH 1" TYPE S DRYWALL SCREWS 8" O.C. WITH VERTICAL JOINTS LOCATED MIDWAY BETWEEN STUDS END JOINTS BACKLOCKED WITH RESILIENT CHANNELS.
4	3" MINERAL OR GLASS FIBER INSULATION IN STUD SPACE.
5	SHEAR PANEL (AS OCCURS) SEE STRUC. SHEAR WALL PLAN.
6	OPPOSITE SIDE: ONE LAYER 5/8" TYPE 'X' GYPSUM WALLBOARD OR GYPSUM VENEER BASE APPLIED AT PARALLEL OR AT RIGHT ANGLES TO STUDS WITH 6d CEMENT COATED NAILS, 1 7/8" LONG, 0.0915" SHANK, 15/16" HEADS, 7" O.C.

ACTUAL FIRE RESISTANCE RATING 1 HOUR FIRE

SOUND RATING 50 TO 54 STC

**CONSTRUCTION ASSEMBLY**  
GA-600-2012 FIRE RESISTANCE DESIGN MANUAL (GA FILE NO. WP 3614)

NOTES	DESCRIPTION
1	2x4 STUDS AT 16" O.C. U.O.N.
2	ONE LAYER 5/8" TYPE 'X' GYPSUM WALLBOARD OR GYPSUM VENEER BASE APPLIED PARALLEL OR AT RIGHT ANGLES TO EACH SIDE OF 2x4 WOOD STUDS 16" O.C. WITH 1-1/4" TYPE W DRYWALL SCREWS 12" O.C.
3	JOINTS STAGGERED 16" ON OPPOSITE SIDES. (LOAD-BEARING)
4	3-1/2" SOUND BATT INSULATION WHERE INDICATED ON FLOOR PLANS
5	SHEAR PANEL (AS OCCURS) SEE STRUC. SHEAR WALL PLAN.

ACTUAL FIRE RESISTANCE RATING 1 HOUR FIRE

SOUND RATING 35 TO 39 STC

**CONSTRUCTION ASSEMBLY**  
UL DESIGN NO. U309

NOTES	DESCRIPTION
1	NOM 2 BY 6 IN., SPACED 16 IN. OC EFFECTIVELY FIRESTOPPED.
2	GYPSUM BOARD - 5/8 IN. THICK, 4 FT WIDE, APPLIED EITHER HORIZONTALLY OR VERTICALLY, NAILED TO STUDS AND BEARING PLATES WITH 6d CEMENT COATED NAILS 1-7/8 IN. LONG, 0.0915 IN. SHANK DIAM AND 1/4 IN. DIAM HEADS SPACED 7 IN. OC. (SEE UL DESIGN U309 FOR APPROVED GYPSUM BY MANUFACTURER)
3	JOINTS AND NAILHEADS (NOT SHOWN) - WALLBOARD JOINTS COVERED WITH PAPER TAPE AND JOINT COMPOUND. NAILHEADS COVERED WITH JOINT COMPOUND. GYPSUM PLASTER NOT MORE THAN 1/8 IN. THICK MAY BE APPLIED OVER THE WALLBOARD IN ADDITION TO THE SPECIFIED JOINT TREATMENT.
4	WOOD SHEAR PANEL (AS OCCURS) AS PER STRUCT. SHEAR WALL PLAN
5	3-1/2" SOUND BATT INSULATION WHERE INDICATED ON FLOOR PLANS
6	RESILIENT CHANNELS 24" O.C. ATTACHED AT TIGHT ANGLES TO ONE SIDE OF 2x6 WOOD STUDS 16" OR 24" O.C. WITH 1-1/4" TYPE S DRYWALL SCREWS. NOTE: RESILIENT CHANNELS TO BE PLACED OPPOSITE OF PLYWD. AS OCCURS AT UNIT PARTY WALLS.

TESTED FIRE RESISTANCE RATING 1 HOUR

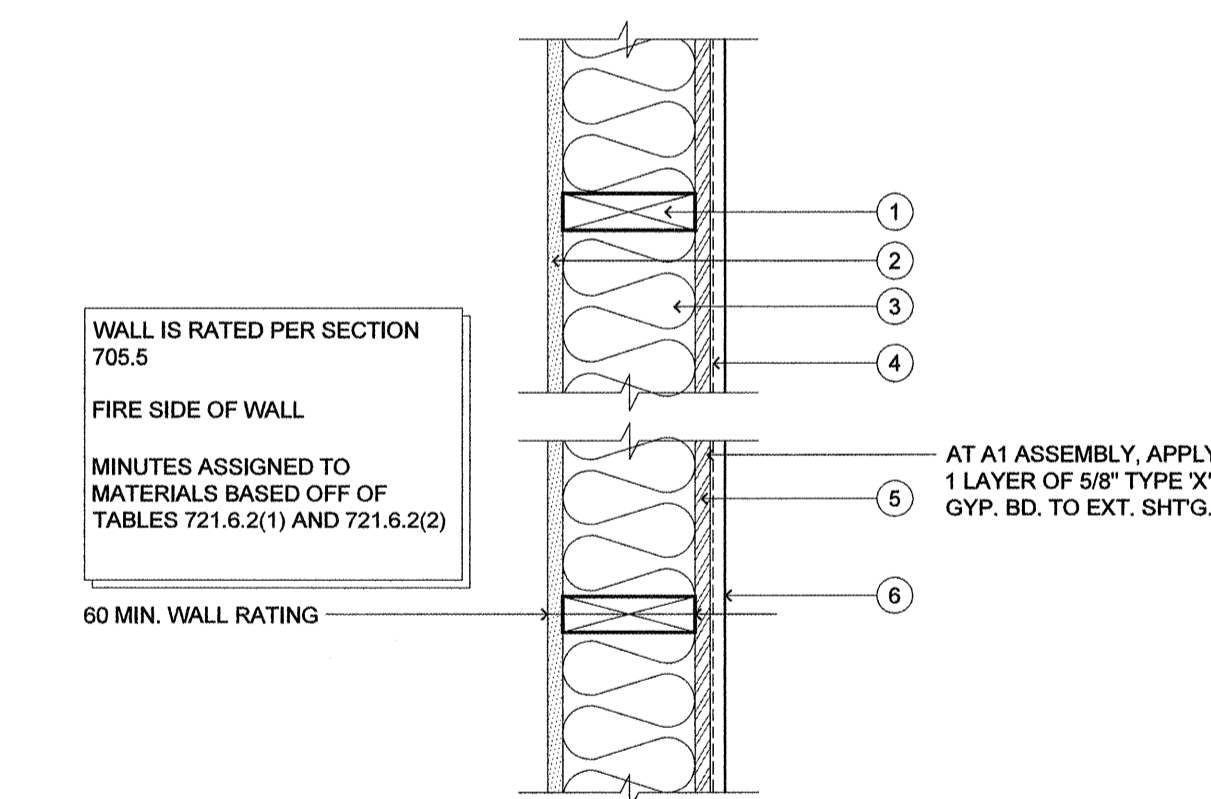
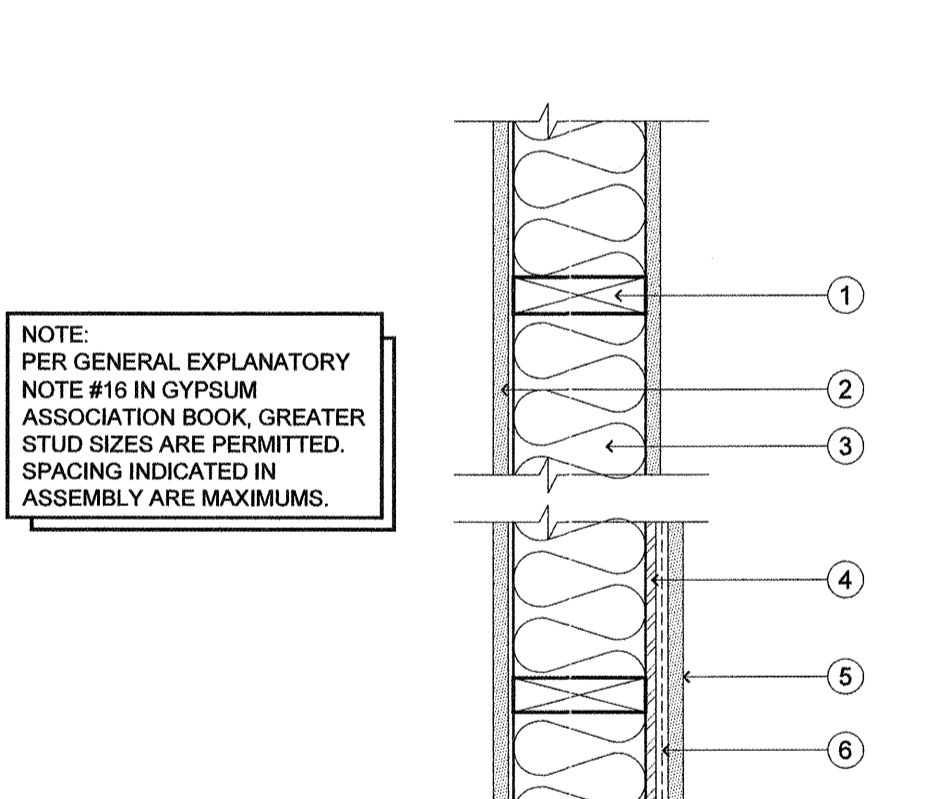
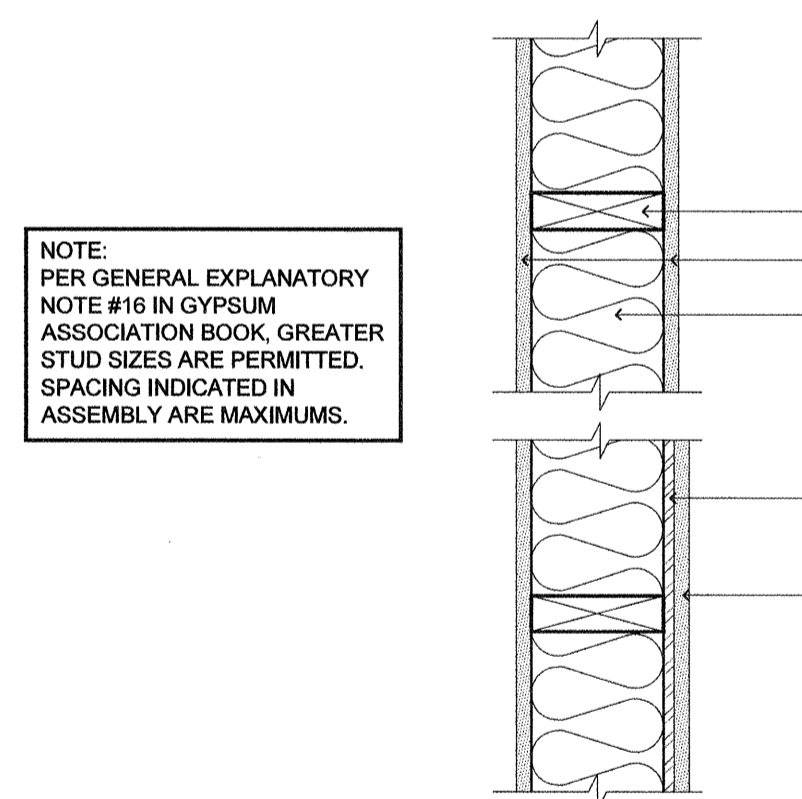
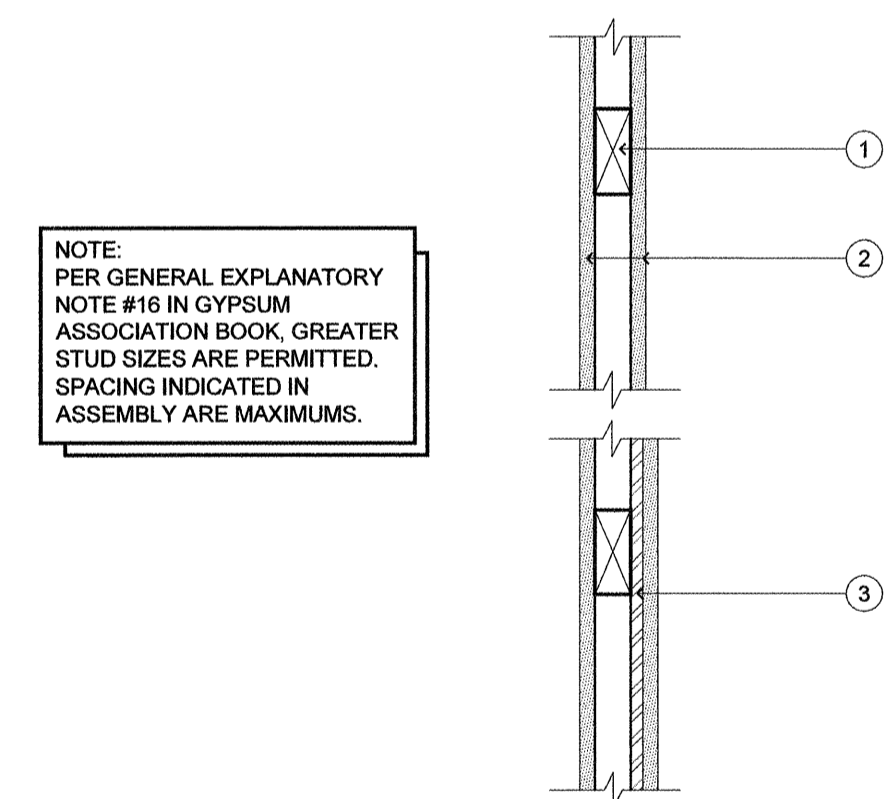
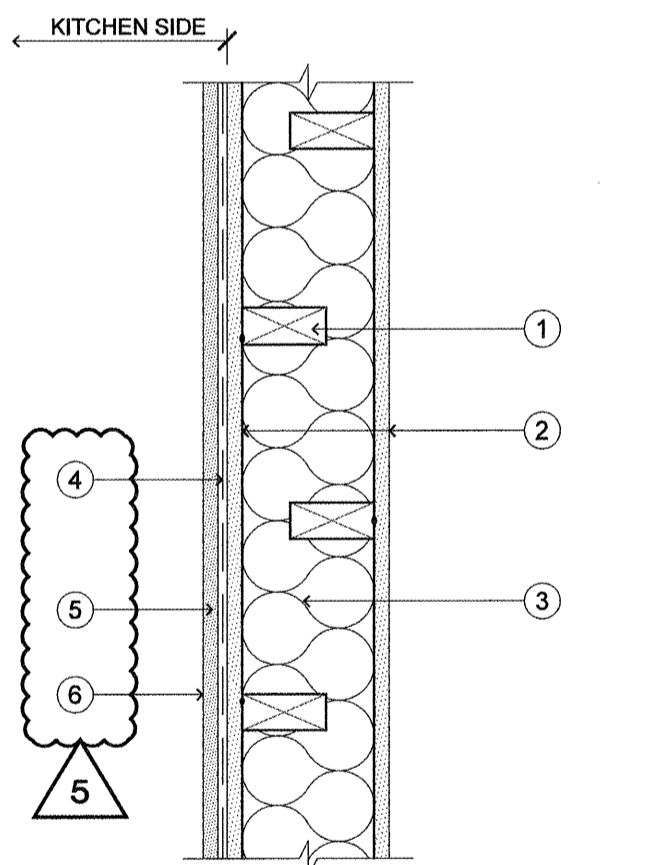
**D** AREA SEPARATION WALL (METAL "H" STUD FIRE WALL) (U336)  
SCALE: 1-1/2"=1'-0"

**C5** INT. WALL ASSEMBLY (INTERIOR 2x6 STAGGERED STUD WALL) (U340)  
SCALE: 1-1/2"=1'-0"

**C3** INT. WALL ASSEMBLY (LAUNDRY PARTITION) (WP 3243)  
SCALE: 1-1/2"=1'-0"

**C1** INT. WALL ASSEMBLY (INTERIOR 2x4 STUD WALL) (WP 3614)  
SCALE: 1-1/2"=1'-0"

**B1** INT. WALL ASSEMBLY (1 HR 6" SEPARATION WALLS) (U309)  
SCALE: 1 1/2" = 1'-0"



NOTE:  
PER GENERAL EXPLANATORY NOTE #16 IN GYPSUM ASSOCIATION BOOK, GREATER STUD SIZES ARE PERMITTED. SPACING INDICATED IN ASSEMBLY ARE MAXIMUMS.

NOTE:  
PER GENERAL EXPLANATORY NOTE #16 IN GYPSUM ASSOCIATION BOOK, GREATER STUD SIZES ARE PERMITTED. SPACING INDICATED IN ASSEMBLY ARE MAXIMUMS.

NOTE:  
PER GENERAL EXPLANATORY NOTE #16 IN GYPSUM ASSOCIATION BOOK, GREATER STUD SIZES ARE PERMITTED. SPACING INDICATED IN ASSEMBLY ARE MAXIMUMS.

NOTE:  
PER GENERAL EXPLANATORY NOTE #16 IN GYPSUM ASSOCIATION BOOK, GREATER STUD SIZES ARE PERMITTED. SPACING INDICATED IN ASSEMBLY ARE MAXIMUMS.

**CONSTRUCTION ASSEMBLY**

NOTES	DESCRIPTION
1	2x4 WOOD STUDS AT 16" O.C. STAGGERED 8" O.C. ON 2x6 WOOD PLATES
2	ONE LAYER 5/8" TYPE 'X' GYPSUM WALLBOARD OR VENEER BASE APPLIED PARALLEL OR AT RIGHT ANGLES TO EACH SIDE OF 2x4 WOOD STUDS AT 16" O.C. WITH 6d COATED NAILS, 1-7/8" LONG, 0.0915" SHANK, 1/4" HEADS, 7" O.C.
3	R-21 INSULATION
4	40-44 STC (44" WITH INSULATION)
5	GREEN GLUE APPLIED BETWEEN 5/8" TYPE 'X' GYPSUM WALL BOARD AND QUIETROCK 530
6	(QUIETROCK 530) - 5/8" THICK, 4" WIDE PANELS, APPLIED VERTICALLY TO STUDS AND BEARING PLATES WITH 1-5/8" LONG, NO. 6, TYPE S, COARSE THREADED SCREWS SPACED AT 8" O.C. ALONG THE PERIMETER OF THE PANELS AND 12" O.C. IN THE FIELD ON KITCHEN SIDE. VERTICAL JOINTS CENTERED OVER STUDS AND STAGGERED ONE STUD CAVITY ON OPPOSITE SIDES OF STUD. HORIZONTAL JOINTS OF VERTICALLY APPLIED PANELS TO BE STAGGERED 4" ON OPPOSITE SIDES OF THE WALL. HORIZONTAL JOINTS OF VERTICALLY APPLIED PANELS TO BE SUPPORTED BY STUDS.
6	ACOUSTICAL PAINT - COLOR PER OWNERS

**CONSTRUCTION ASSEMBLY**  
GA-600-2012 FIRE RESISTANCE DESIGN MANUAL (GA FILE NO. WP 3640)

NOTES	DESCRIPTION
1	2x4 STUDS @ 16" O.C. U.O.N.
2	ONE LAYER 5/8" TYPE 'X' GYPSUM WALLBOARD OR GYPSUM VENEER BASE APPLIED PARALLEL OR AT RIGHT ANGLES TO EACH SIDE OF EITHER 2x3 OR 2x4 WOOD STUDS, TURNED FLATWISE, 24" O.C. WITH 6d CEMENT-COATED NAILS, 1-7/8" LONG, 0.0915" SHANK, 1/4" HEADS, 7" O.C. (NON LOAD BEARING)
3	SHEAR PANEL (AS OCCURS) SEE STRUC. SHEAR WALL PLAN.

ACTUAL FIRE RESISTANCE RATING 1 HOUR FIRE

SOUND RATING NR

**CONSTRUCTION ASSEMBLY**  
GA-600-2012 FIRE RESISTANCE DESIGN MANUAL (GA FILE NO. WP 3614)

NOTES	DESCRIPTION
1	2x6 STUDS AT 16" O.C. U.O.N.
2	ONE LAYER 5/8" TYPE 'X' GYPSUM WALLBOARD OR GYPSUM VENEER BASE APPLIED PARALLEL OR AT RIGHT ANGLES TO EACH SIDE OF 2x6 WOOD STUDS 16" O.C. WITH 1-1/4" TYPE W DRYWALL SCREWS 12" O.C.
3	JOINTS STAGGERED 16" ON OPPOSITE SIDES. (LOAD-BEARING)
4	3-1/2" SOUND BATT INSULATION WHERE INDICATED ON FLOOR PLANS
5	SHEAR PANEL (AS OCCURS) SEE STRUC. SHEAR WALL PLAN.

ACTUAL FIRE RESISTANCE RATING 1 HOUR FIRE

SOUND RATING 35 TO 39 STC

**CONSTRUCTION ASSEMBLY**  
GA-600-2012 FIRE RESISTANCE DESIGN MANUAL (GA FILE NO. WP 3243)

NOTES	DESCRIPTION
1	2x6 STUDS AT 16" O.C. U.O.N.
2	ONE LAYER 5/8" TYPE 'X' GYPSUM WALLBOARD OR GYPSUM VENEER BASE APPLIED AT RIGHT ANGLES TO CHANNELS WITH 1" TYPE S DRYWALL SCREWS 8" O.C. WITH VERTICAL JOINTS LOCATED MIDWAY BETWEEN STUDS END JOINTS BACKLOCKED WITH RESILIENT CHANNELS.
3	3" MINERAL OR GLASS FIBER INSULATION IN STUD SPACE.
4	SHEAR PANEL (AS OCCURS) SEE STRUC. SHEAR WALL PLAN.
5	OPPOSITE SIDE: ONE LAYER 5/8" TYPE 'X' GYPSUM WALLBOARD OR GYPSUM VENEER BASE APPLIED AT PARALLEL OR AT RIGHT ANGLES TO STUDS WITH 6d CEMENT COATED NAILS, 1 7/8" LONG, 0.0915" SHANK, 15/16" HEADS, 7" O.C.
6	RESILIENT CHANNELS 24" O.C. ATTACHED AT TIGHT ANGLES TO ONE SIDE OF 2x6 WOOD STUDS 16" OR 24" O.C. WITH 1-1/4" TYPE S DRYWALL SCREWS.

ACTUAL FIRE RESISTANCE RATING 1 HOUR FIRE

SOUND RATING 50 TO 54 STC

**CONSTRUCTION ASSEMBLY**  
FIRE RATING ACHIEVED BY CALCULATED METHOD

NOTES	DESCRIPTION
1	2x6 STUDS AT 16" O.C. U.O.N. (FIRE RATING PER TABLE 721.6.2(2) 20 MIN.)
2	ONE LAYER 5/8" TYPE 'X' GYPSUM WALLBOARD OR WATER RESISTANT BACKER BOARD OR VENEER BASE, AS NOTED ON PLAN, APPLIED PARALLEL WITH OR AT RIGHT ANGLES TO 2x4 WOOD STUDS, WITH 6d COATED NAILS 1-7/8" LONG, 0.0915" SHANK, 1/4" HEADS, 7" O.C. (LOAD BEARING). FIRE RATING PER TABLE 721.6.2(1) 40 MIN.
3	R-21 FIBER GLASS BATT. INSUL.
4	WRAP ENTIRE EXTERIOR OF BUILDING WITH BUILDING PAPER PER CONTRACTOR (BY FORTIFIBER BUILDING SYSTEMS). ALL JOINTS TO BE TAPED WITH FORTIFIBER SHEATHING TAPE). SYSTEM MUST BE INSTALLED IN ACCORDANCE W/ MANUFACTURE INSTALLATION INSTRUCTIONS TO PROVIDE 10 YEAR WARRANTY TO GENERAL CONTRACTOR.
5	ONE LAYER 7/16" O.S.B. SHEATHING, 48" WIDE, APPLIED PARALLEL TO STUDS WITH GALVANIZED ROOFING NAILS, 1-3/4" LONG, 0.120" SHANK, 7/16" OR 1/2" HEADS, 12" O.C. IN FIELD, 6" O.C. FROM FIRE SIDE PERIMETER. EXT. CLADDING TO BE ATTACHED THROUGH SHEATHING TO STUDS. WALLBOARD AND SHEATHING NAILED TO TOP AND BOTTOM PLATES AT 8" O.C.
6	EXTERIOR SIDING PER ELEVATIONS

ACTUAL FIRE RESISTANCE RATING 1 HOUR FIRE

SOUND RATING N/A

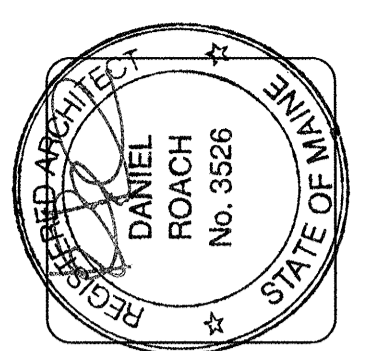
**C6** INT. WALL ASSEMBLY (STAGGERED STUD SOUND WALL) 1-HR (WP 3380)  
SCALE: 1 1/2" = 1'-0"

**C4** INT. WALL ASSEMBLY (2x4 PARTITION) (WP 3640)  
SCALE: 1-1/2"=1'-0"

**C2** INT. WALL ASSEMBLY (INTERIOR 2x6 STUD WALL) (WP 3243)  
SCALE: 1-1/2"=1'-0"

**B2** INT. WALL ASSEMBLY (INTERIOR 2x6 STUD WALL) (WP 3243)  
SCALE: 1-1/2"=1'-0"

**A** EXT. WALL ASSEMBLY (EXTERIOR 2x6 STUD WALL) 1-HR (U309)  
SCALE: 1-1/2"=1'-0"



**lenity**  
architecture  
3150 Kennebunk Coast SE, Scarborough, Oregon 97136  
P: 503.399.1090 W: lenityarchitecture.com

**COLSON AND COLSON**  
GENERAL CONTRACTOR, INC.  
2260 McCall Street SE, Suite 200  
SALEM, OREGON, 97302  
PHONE (503) 586-7401

**PORTLAND RETIREMENT RESIDENCE**  
802 OCEAN AVE. PORTLAND, MAINE 04103

**FLOOR AND WALL TYPES**

DATE: 8/28/2015

REVISED DATE:  
9/22/2015  
2/2/2016  
7/18/2016

**SHEET A7.1a**