

lenity
architecture
3150 Kettie Cole St. Salem, Oregon 97301
P: 503.399.1030 F: 503.399.0565 W: lenityarchitecture.com

COLSON AND COLSON
GENERAL CONTRACTOR, INC.
2280 McGLCHRIST STREET SE, SUITE 200
SALEM, OREGON, 97302
PHONE (503) 586-7401

PORTLAND
RETIREMENT RESIDENCE
802 OCEAN AVE. PORTLAND, MAINE 04103

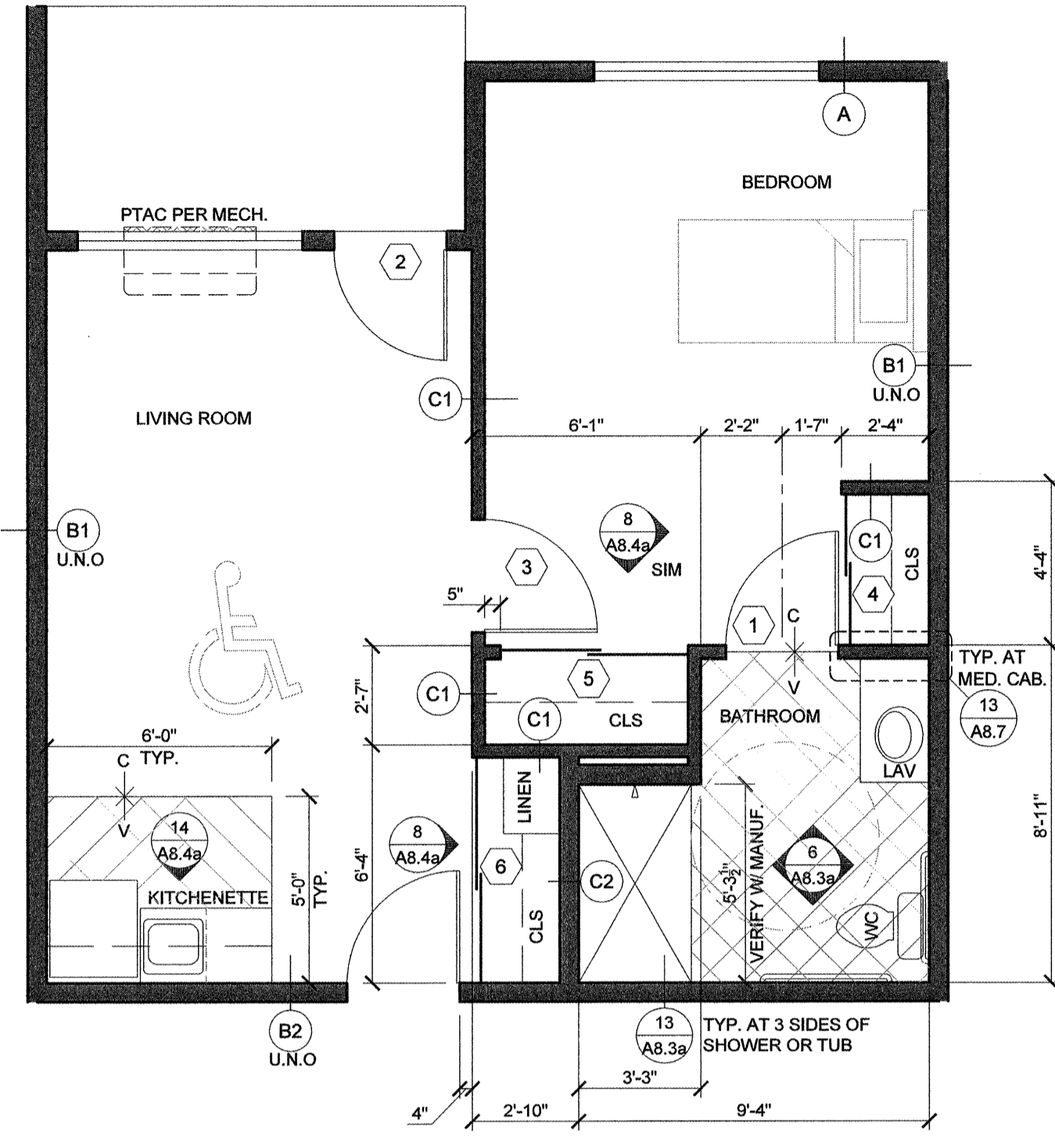
SUITE PLANS

DATE: 8/28/2015
REVISED DATE: 9/22/2015
2/2/2016
7/18/2016

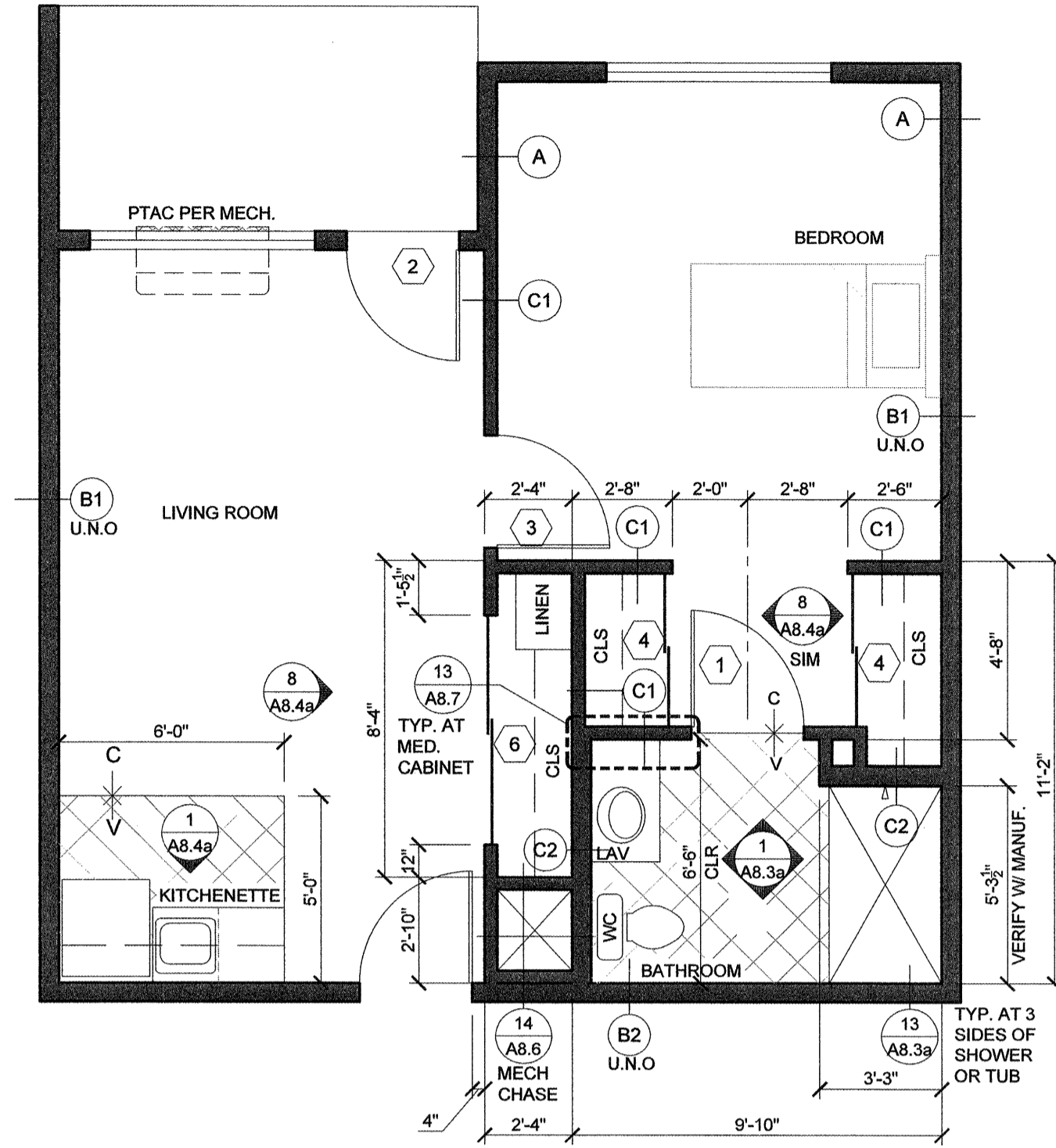
SHEET
A5.9

GENERAL NOTES:

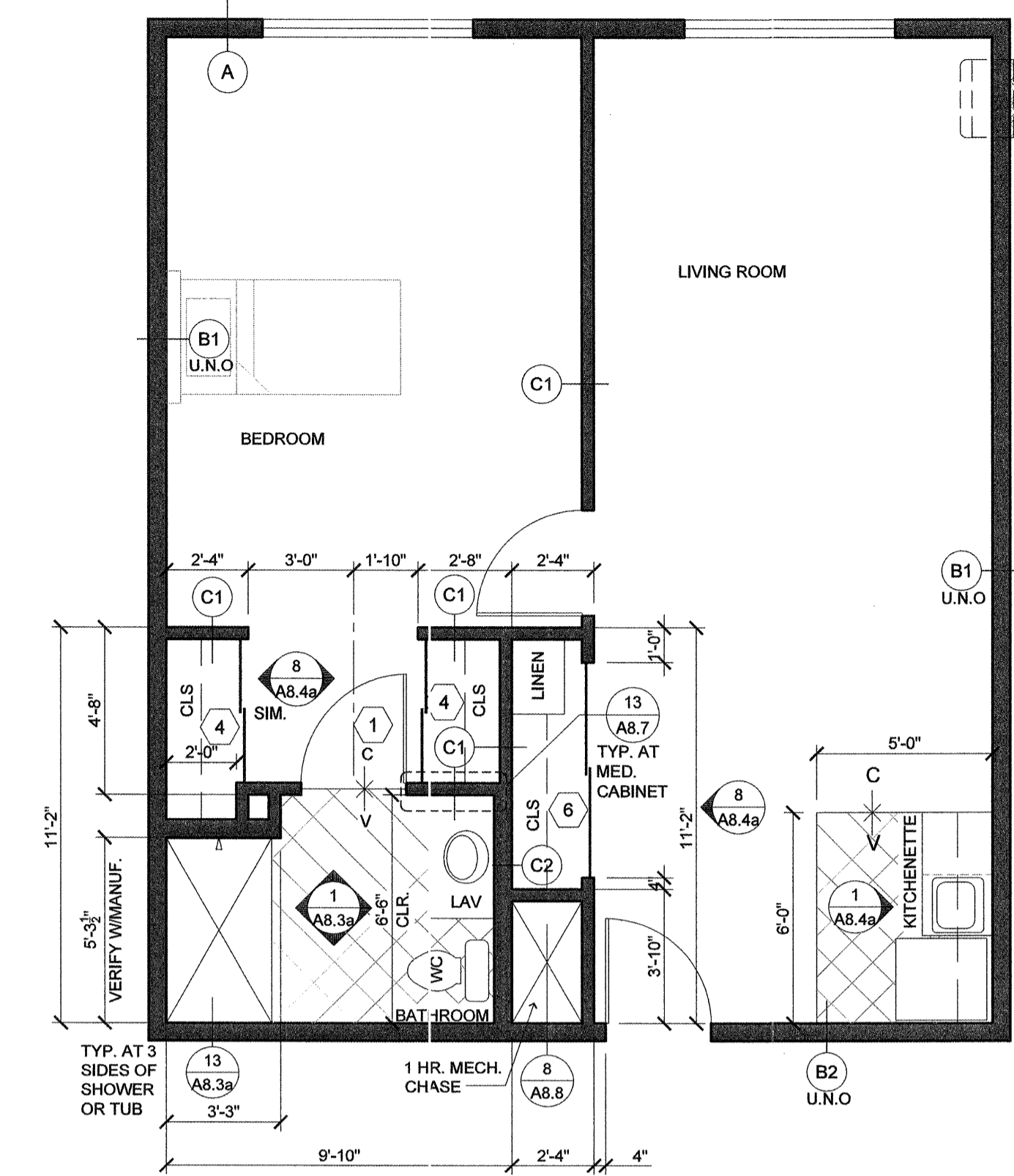
- REFER TO 2/A8.3a FOR TYPICAL SUITE LAYOUT.
 - FRAME AND WIRE FOR FUTURE PTAC RECEPTACLE ON RIGHT SIDE OF BASEBOARD LOCATION. TO REPLACE BASEBOARD IN "C" UNIT SPARE BEDROOMS.
 - REFER TO PLUMBING DETAILS & GENERAL NOTES / SPECIFICATIONS ON SHEET M2.2 FOR FIRE BARRIER.
 - REFER TO PLUMBING DETAILS ON SHEETS M2.1 & M2.2.
 - 1 1/2" GYP. CRETE FLR. COVERING AT UNIT BATHROOMS TYPICAL ALL UNITS. TRANSITION TO 1" AT CENTER OF DOOR.
 - PROVIDE DRYWALL EXPANSION JOINTS AT CORRIDOR FACE OF ALL COMMON DOORS AND INTERIOR DOOR JAMBS AT TOP FLOOR.
- DOOR DESIGNATION SEE A8.2a
 INTERIOR ELEV. SEE A8.3a, A8.3b & A8.4 SHEETS
 DESIGNATES WALL TYPES SHOWN ON COVER SHEET & A7.1a AND A7.1b



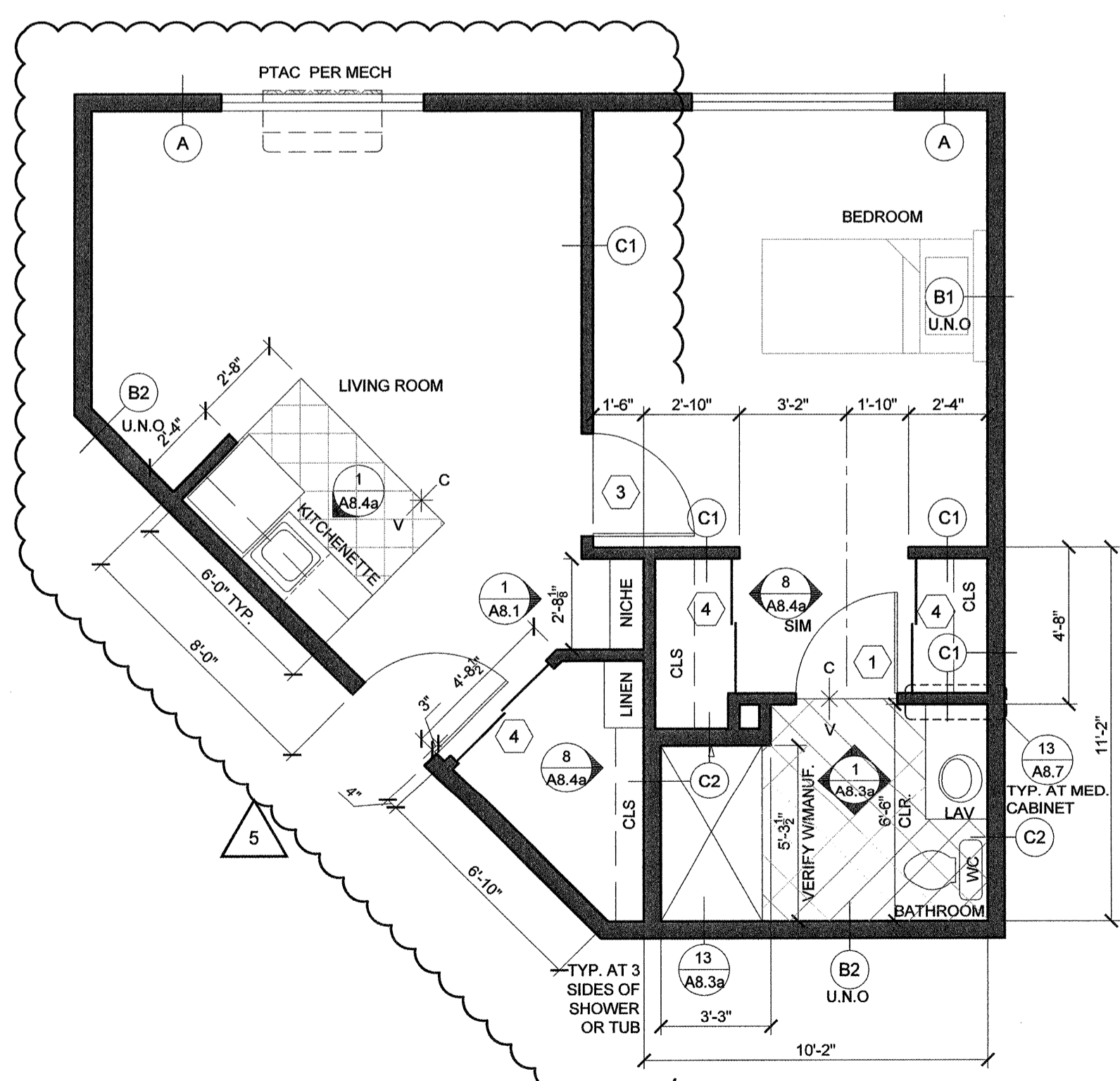
1 B24
SCALE: 1/4"=1'-0"



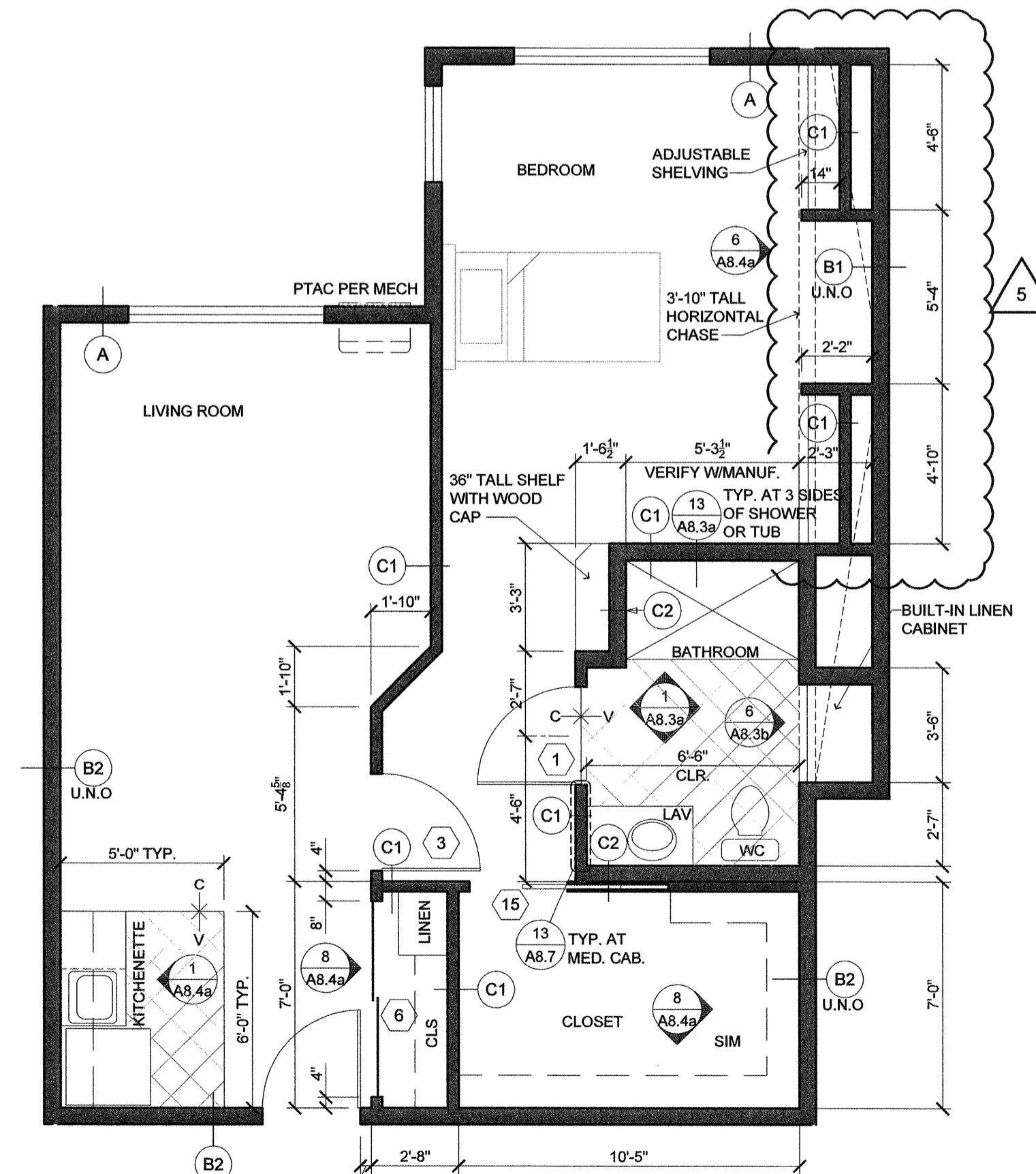
2 B25
SCALE: 1/4"=1'-0"



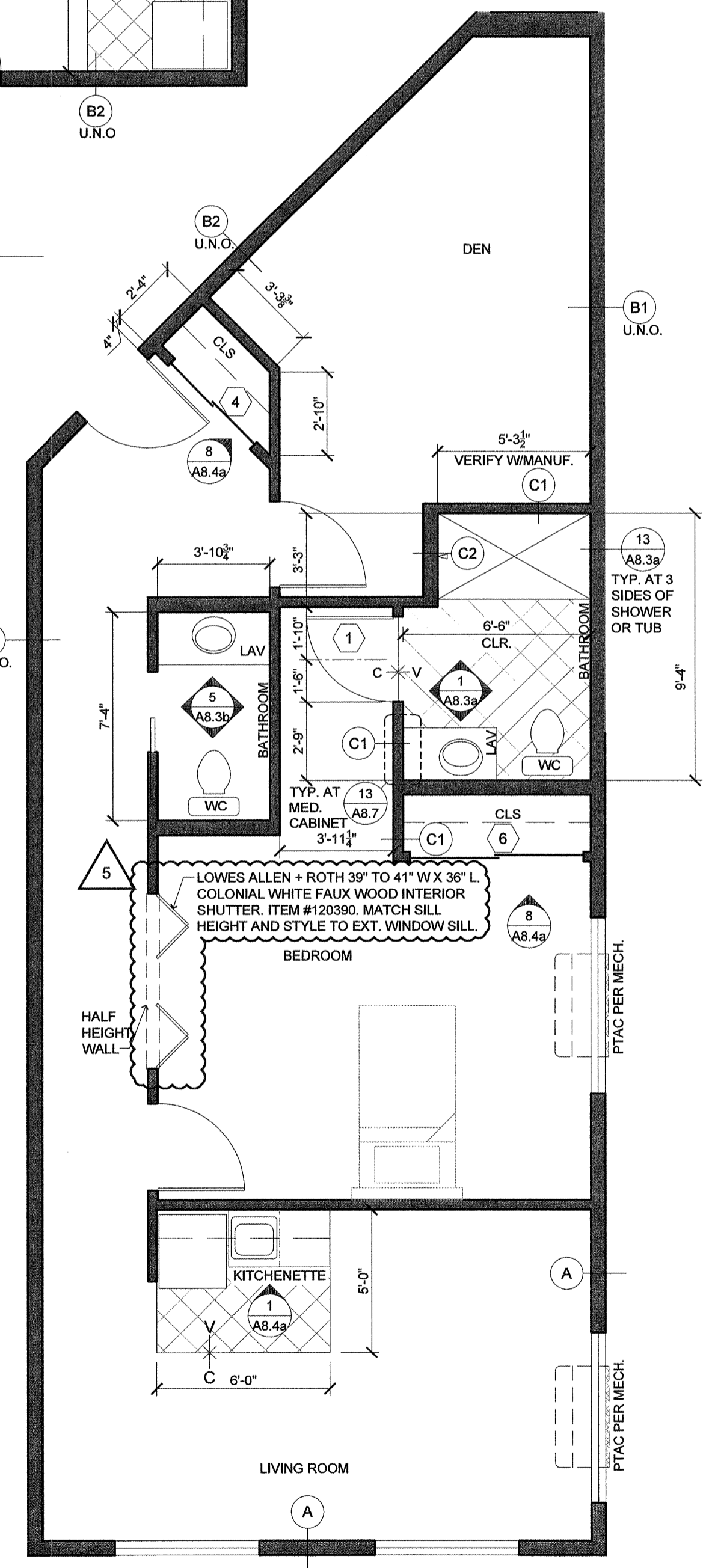
3 B26
SCALE: 1/4"=1'-0"



4 B27
SCALE: 1/4"=1'-0"



5 B28
SCALE: 1/4"=1'-0"



6 BD1
SCALE: 1/4"=1'-0"

NOTE: REFER TO A3 SHEETS FOR WINDOW IDENTIFICATION.

WALL TYPE "B" AT ALL STORAGE AND LAUNDRY ROOMS

NOTE: SEE E5 SHEETS FOR ELECTRICAL LAYOUTS AND M3 SHEET FOR MECH. LAYOUTS OF SUITES

ALL UNITS OTHER THAN THOSE IDENTIFIED AS WHEELCHAIR ACCESSIBLE ARE TO BE ADAPTABLE PER FAIR HOUSING ACT/ADA WITH SHOWER ACCESSIBLE CONVERTIBLE SUITES

SUITE PLANS

SCALE: 1/4"=1'-0"

www.aia.org 2015 2.35 PM Wed Oct 22 2015 13:21 PM local time. File: p:\main\main\portland\retire\plan\A5.9