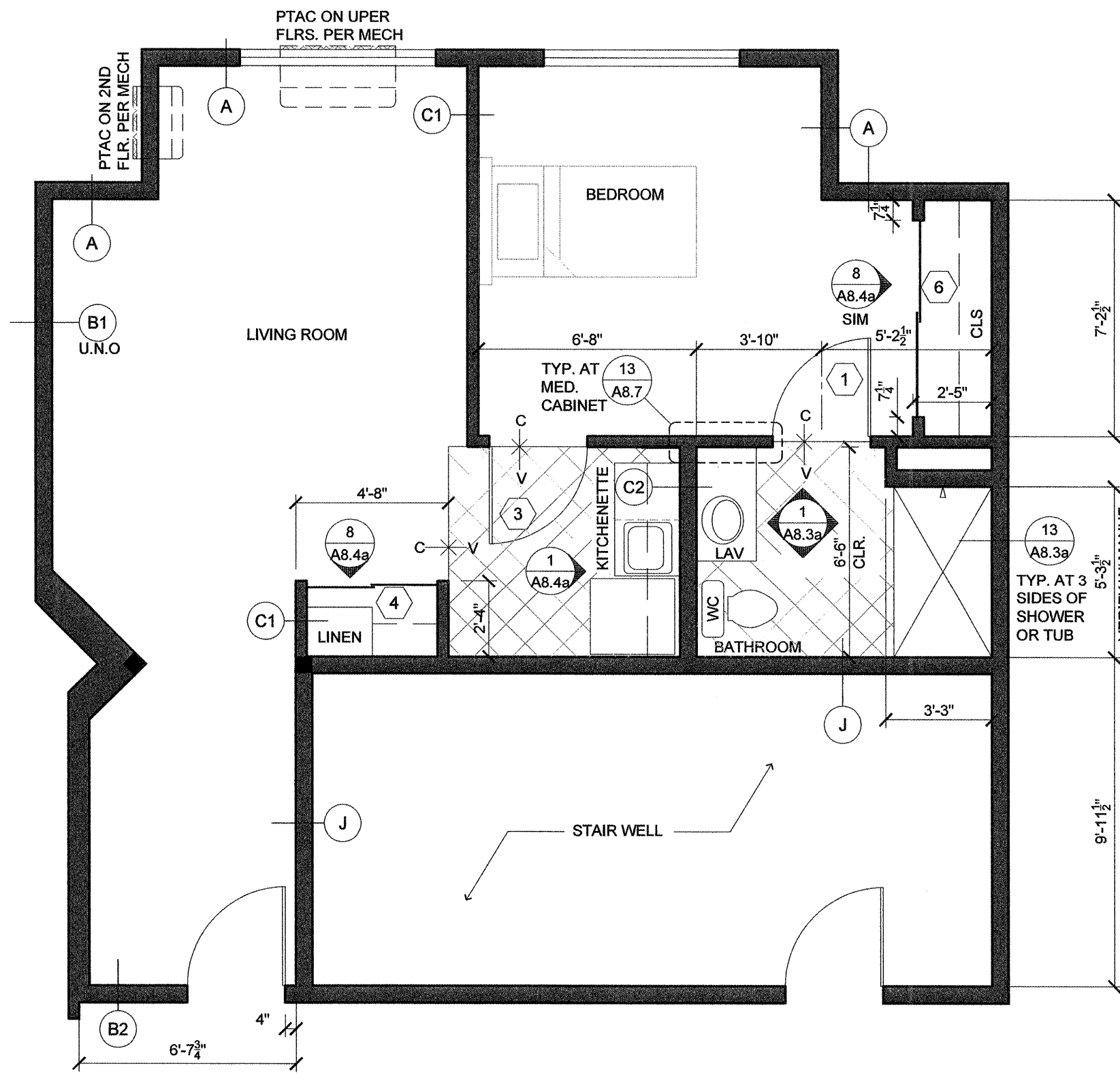
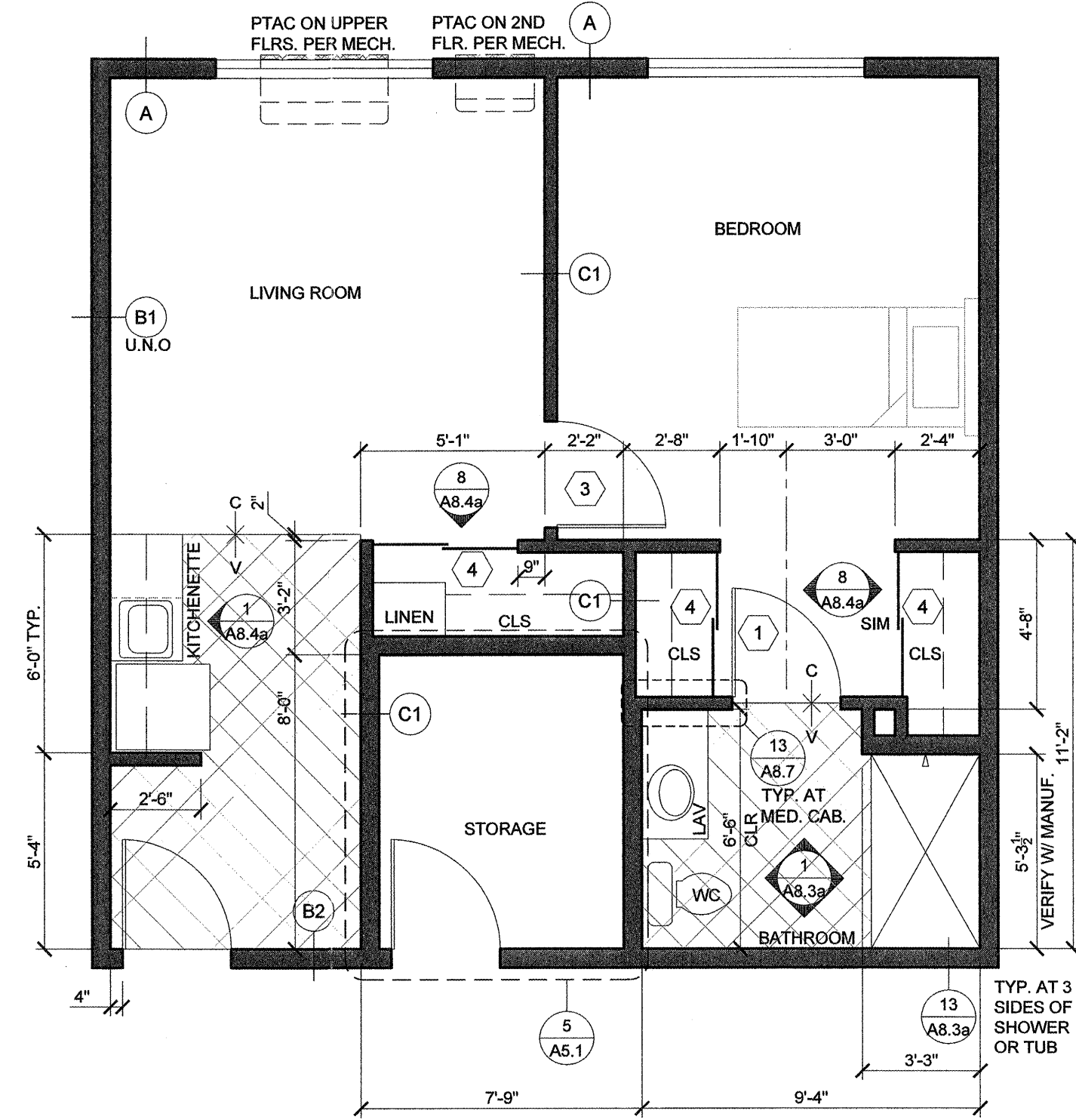


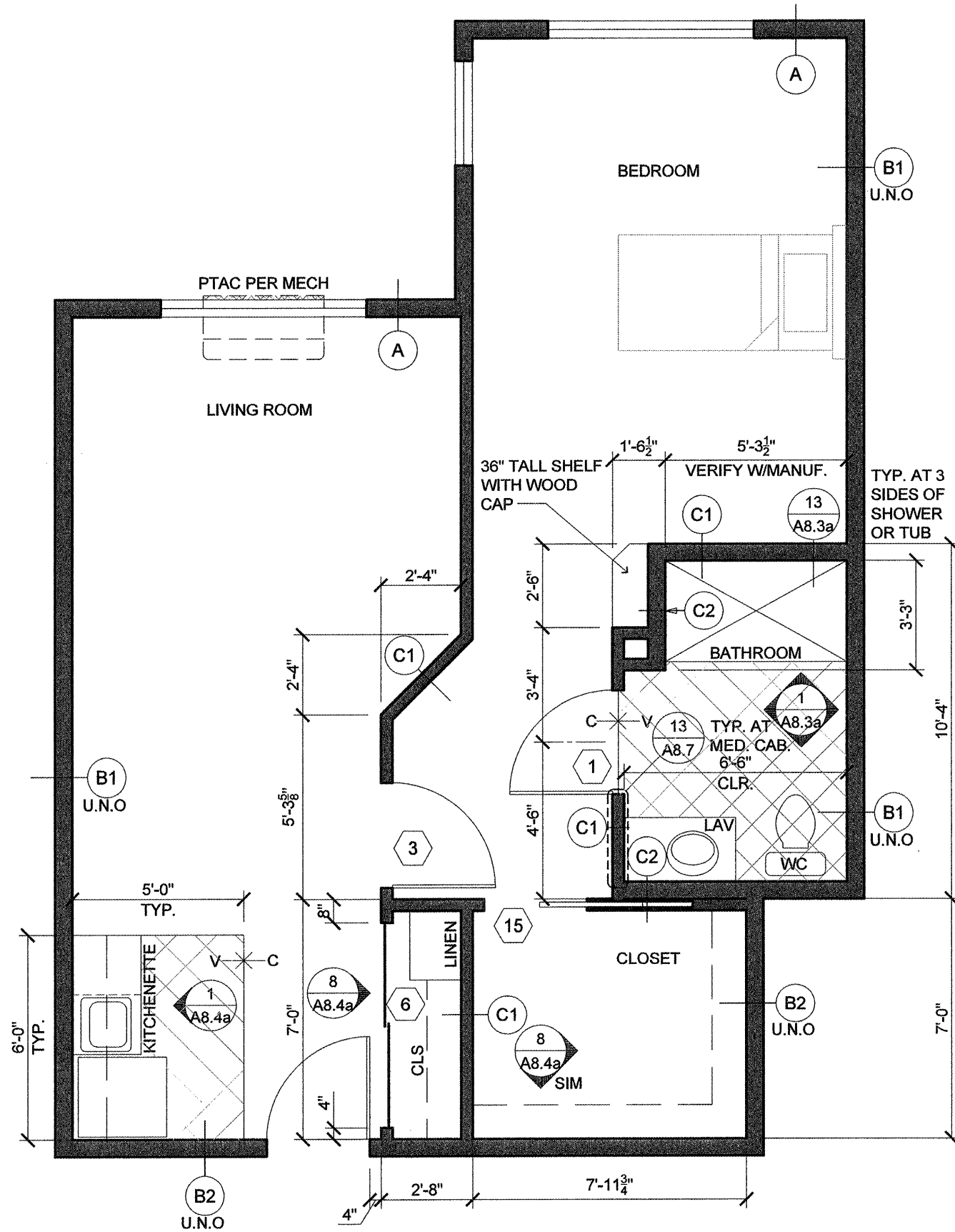
1 **B18**  
SCALE: 1/4"=1'-0"



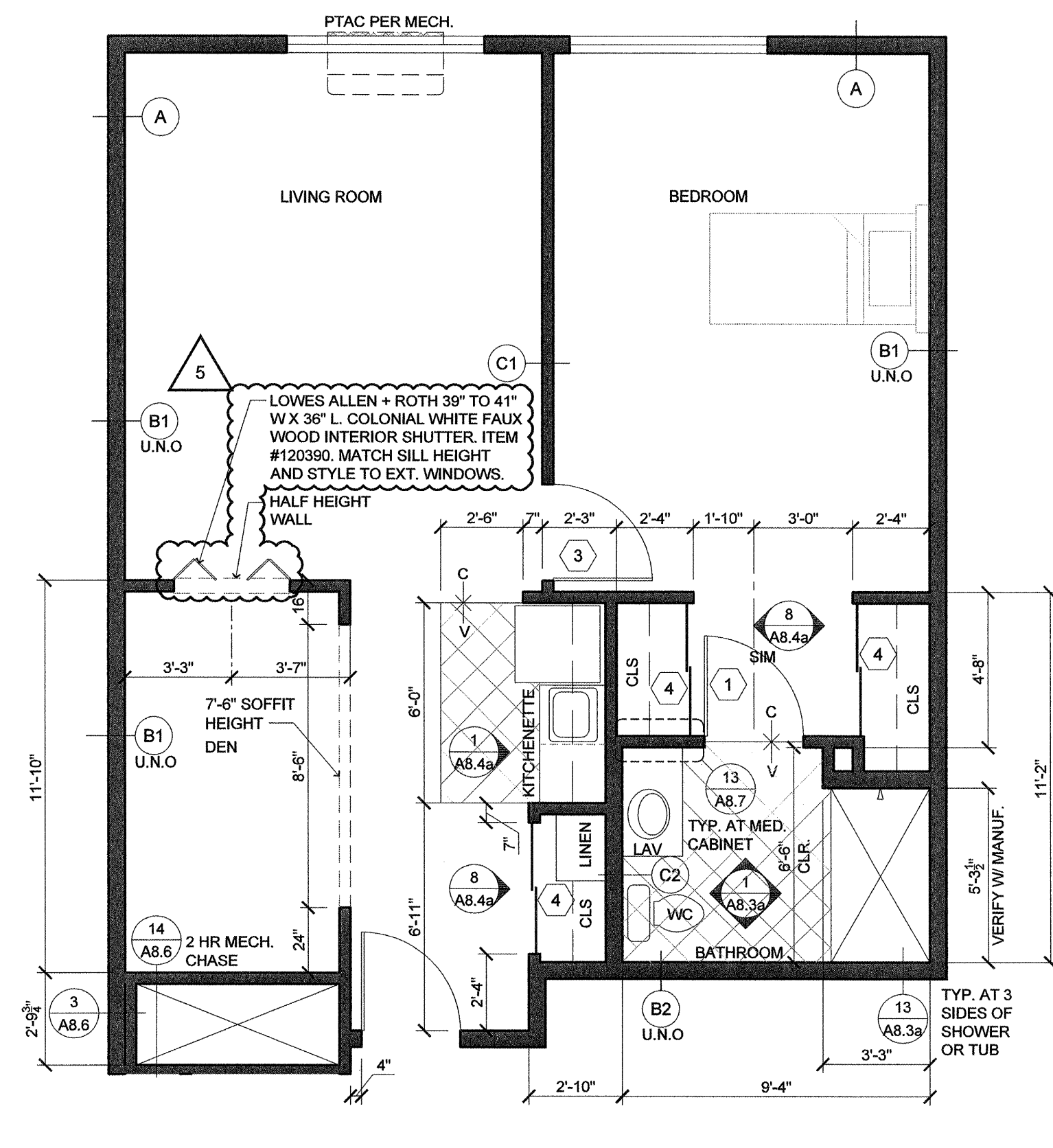
2 **B19**  
SCALE: 1/4"=1'-0"



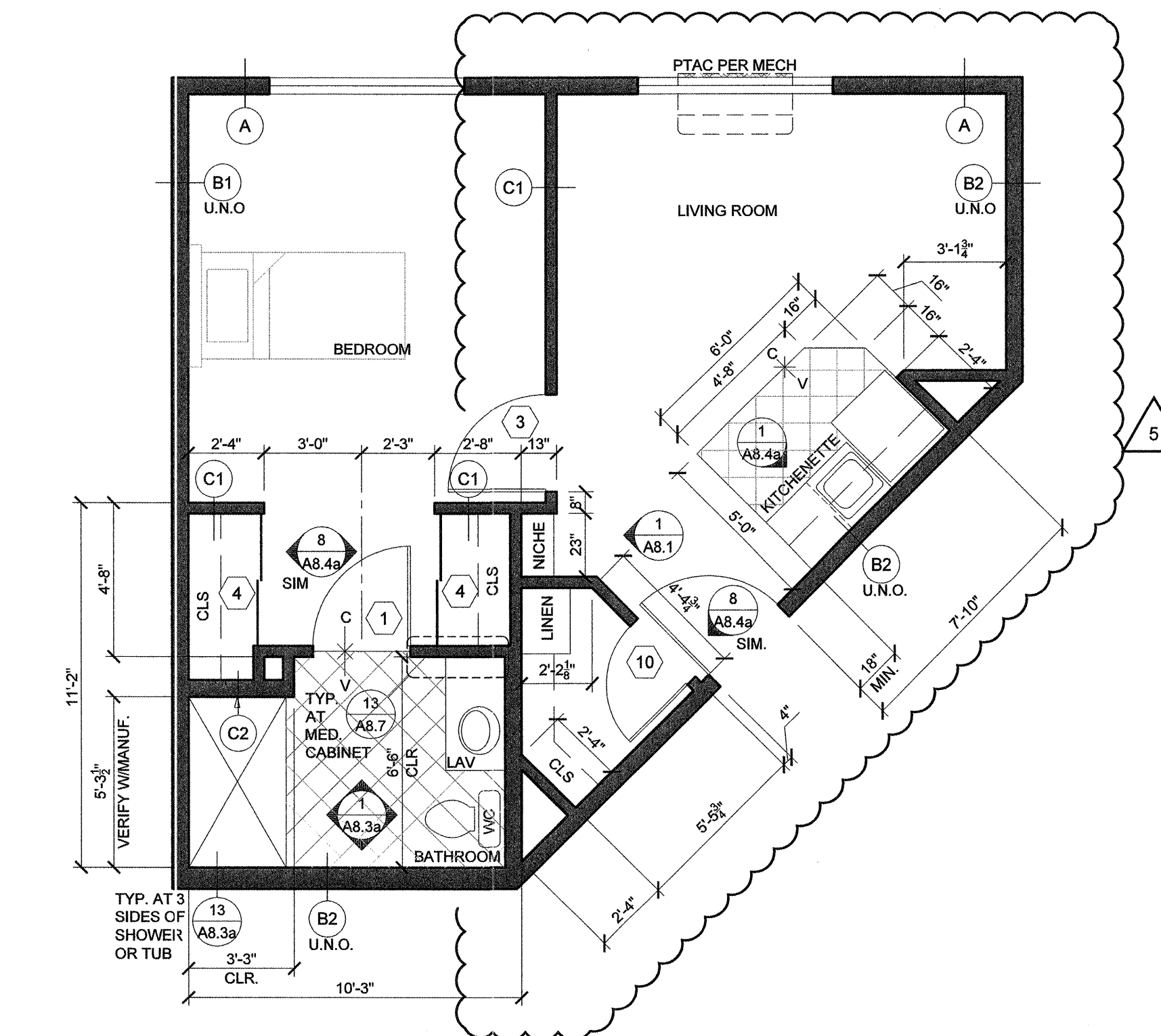
3 **B20**  
SCALE: 1/4"=1'-0"



4 **B21**  
SCALE: 1/4"=1'-0"



5 **B22**  
SCALE: 1/4"=1'-0"



6 **B23**  
SCALE: 1/4"=1'-0"

**GENERAL NOTES:**

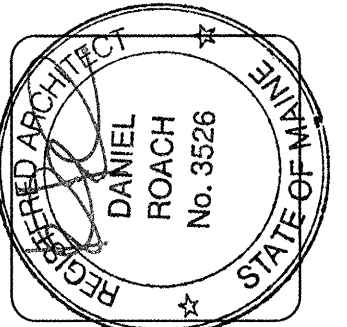
- REFER TO 2/A8.3a FOR TYPICAL SUITE BATH LAYOUT.
  - FRAME AND WIRE FOR FUTURE PTAC RECEPTACLE ON RIGHT SIDE OF BASEBOARD LOCATION. TO REPLACE BASEBOARD IN "C" UNIT SPARE BEDROOMS.
  - REFER TO PLUMBING DETAILS & GENERAL NOTES / SPECIFICATIONS ON SHEET M2.2 FOR FIRE BARRIER.
  - REFER TO PLUMBING DETAILS ON SHEETS M2.1 & M2.2.
  - 1 1/2" GYP. CRETE FLR. COVERING AT UNIT BATHROOMS TYPICAL ALL UNITS. TRANSITION TO 1" AT CENTER OF DOOR.
  - PROVIDE DRYWALL EXPANSION JOINTS AT CORRIDOR FACE OF ALL COMMON DOORS AND INTERIOR DOOR JAMBS AT TOP FLOOR.
- DOOR DESIGNATION SEE A8.2a  
 INTERIOR ELEV. SEE A8.3a, A8.3b & A8.4 SHEETS  
 DESIGNATES WALL TYPES SHOWN ON COVER SHEET & AT.1a AND AT.1b

**NOTE: REFER TO A3 SHEETS FOR WINDOW IDENTIFICATION.**

**WALL TYPE "B" AT ALL STORAGE AND LAUNDRY ROOMS**

**NOTE: SEE E5 SHEETS FOR ELECTRICAL LAYOUTS AND M3 SHEET FOR MECH. LAYOUTS OF SUITES**

**ALL UNITS OTHER THAN THOSE IDENTIFIED AS WHEELCHAIR ACCESSIBLE ARE TO BE ADAPTABLE PER FAIR HOUSING ACT/ADA WITH SHOWER ACCESSIBLE CONVERTIBLE SUITES**



**lenity architecture**  
3150 Kenia Court SE, Salem, Oregon 97302  
P: 503.399.1090 F: 503.399.0585 W: lenityarchitecture.com

**COLSON AND COLSON**  
GENERAL CONTRACTOR, INC.  
2280 McGILCHRIST STREET SE, SUITE 200  
SALEM, OREGON, 97302  
PHONE (503) 586-7401

**PORTLAND RETIREMENT RESIDENCE**  
802 OCEAN AVE. PORTLAND, MAINE 04103

**SUITE PLANS**

DATE: 8/28/2015  
REVISED DATE:  
9/22/2015  
2/2/2016  
7/18/2016

**SHEET A5.8**

s:\a5\2015 3-25 PM Job - Portland Retirement Residence - Suite Plans.dwg, A5.8  
 8/28/2015 3:25 PM Job - Portland Retirement Residence - Suite Plans.dwg, A5.8