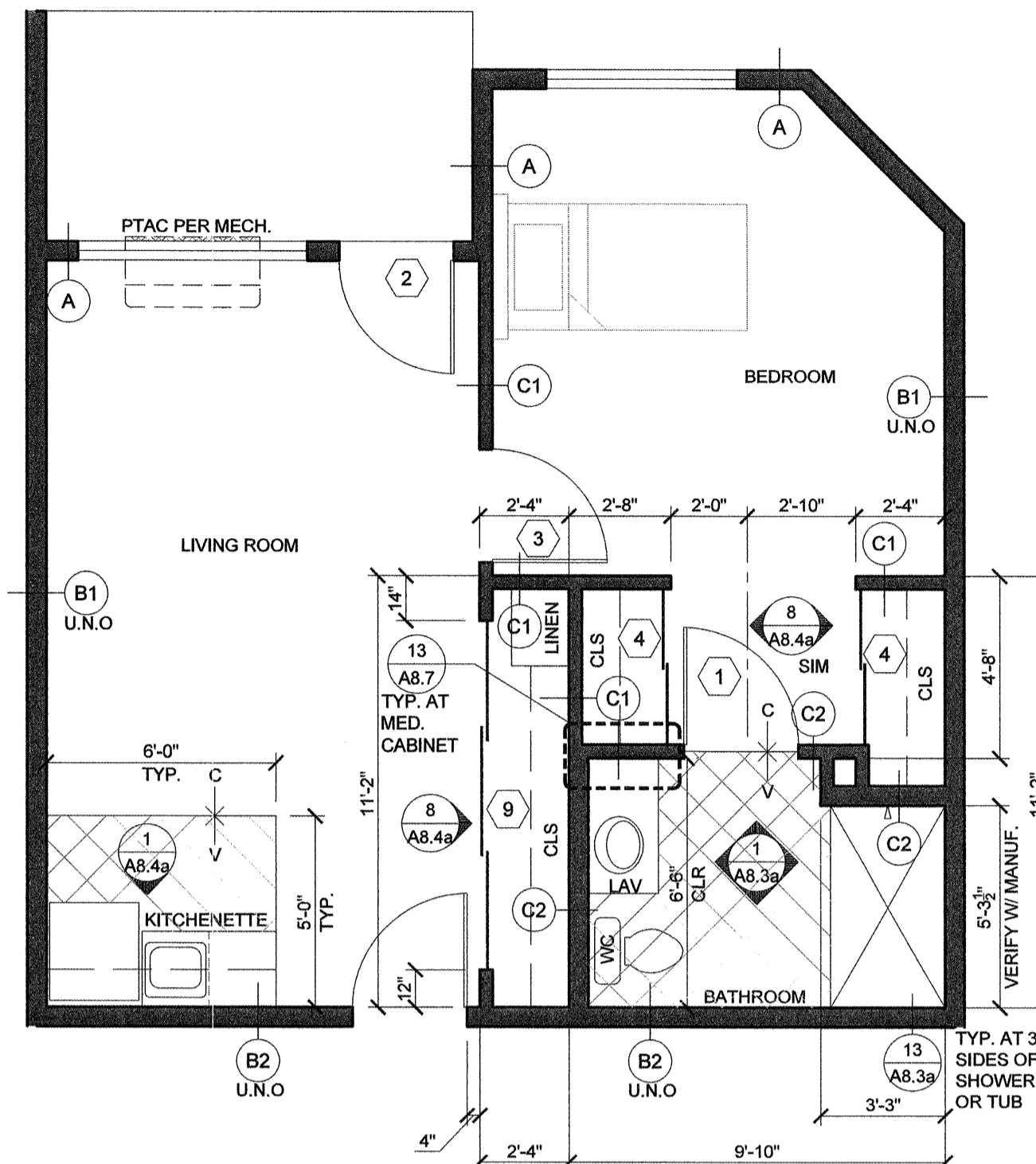
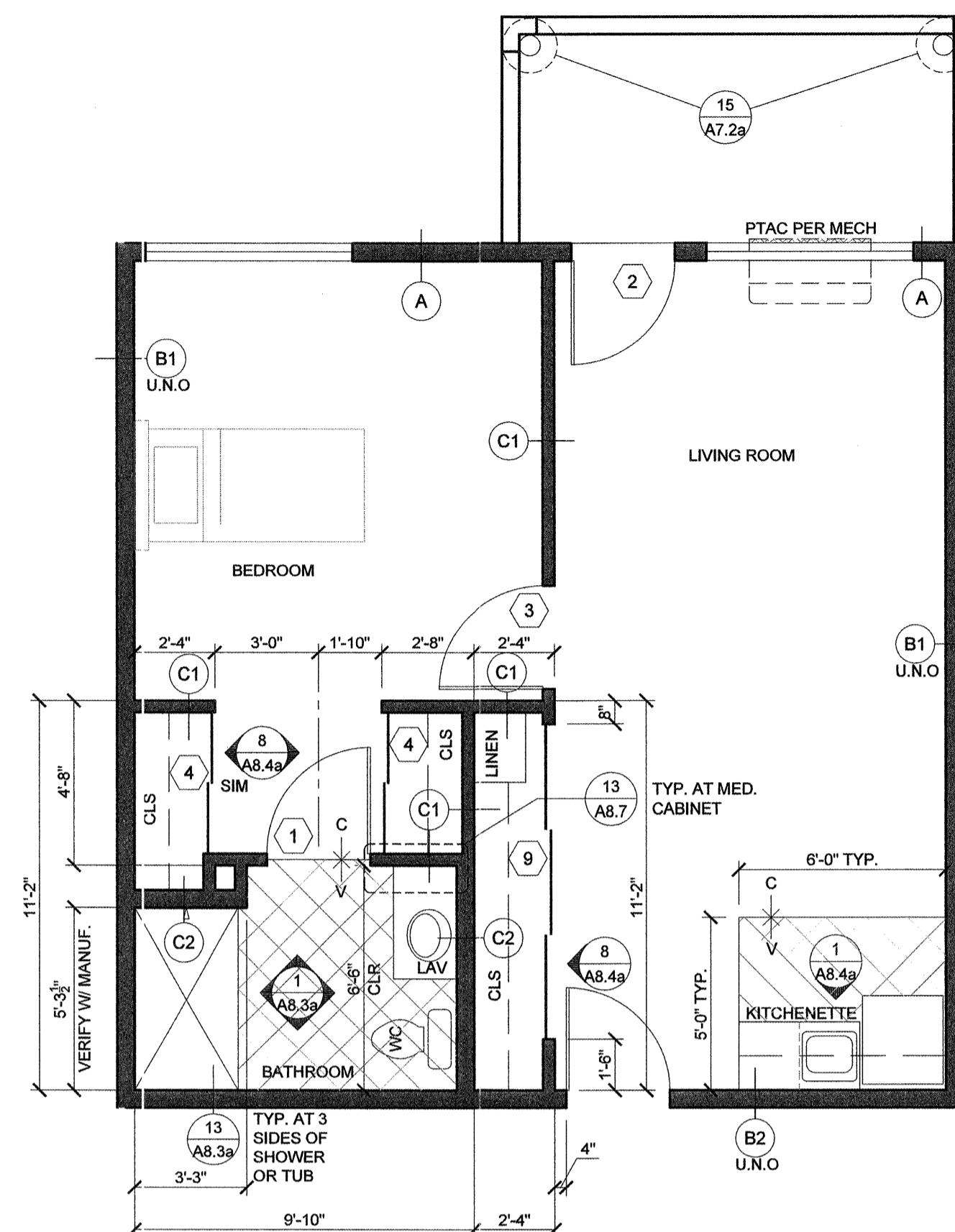


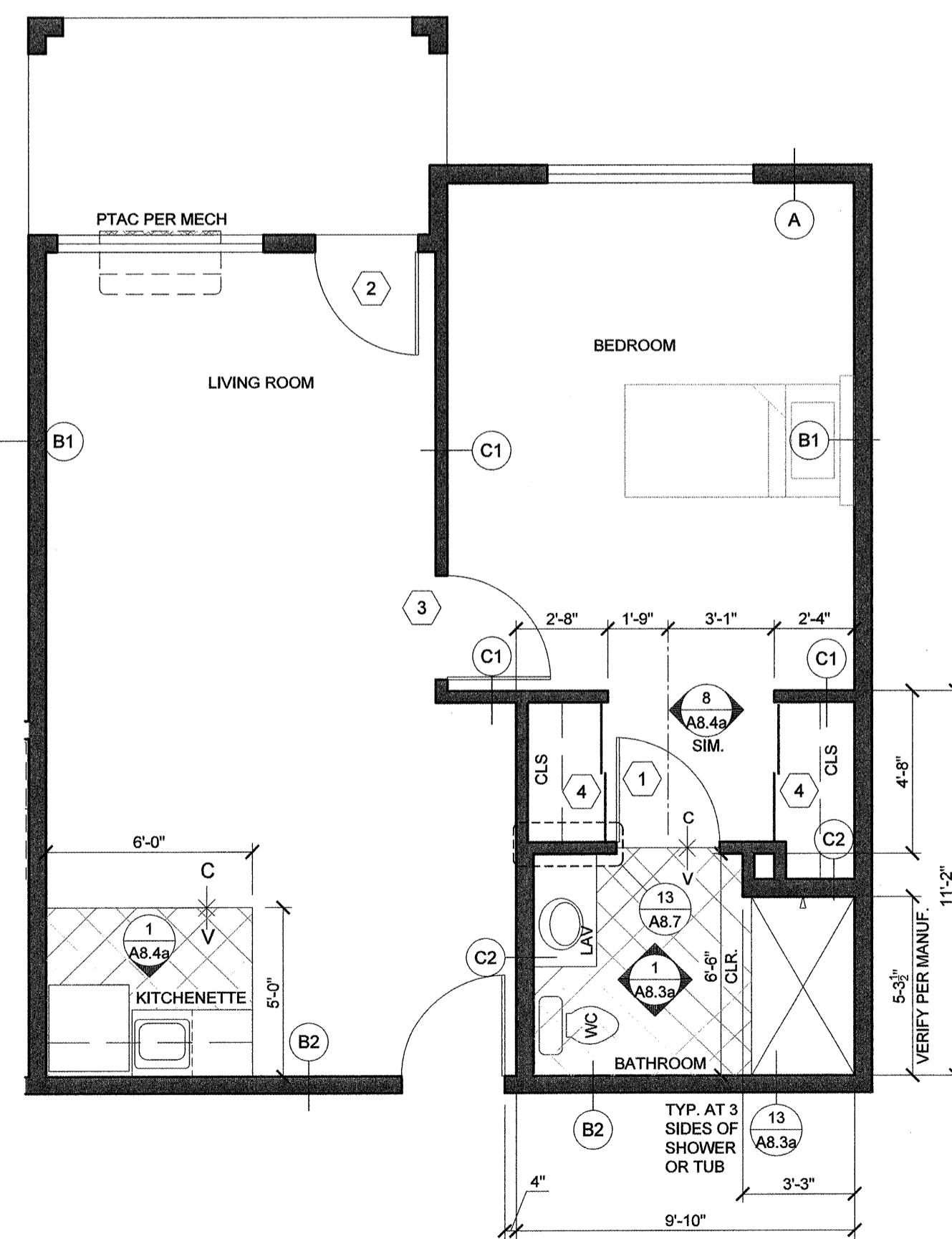
1
B12
SCALE: 1/4"=1'-0"



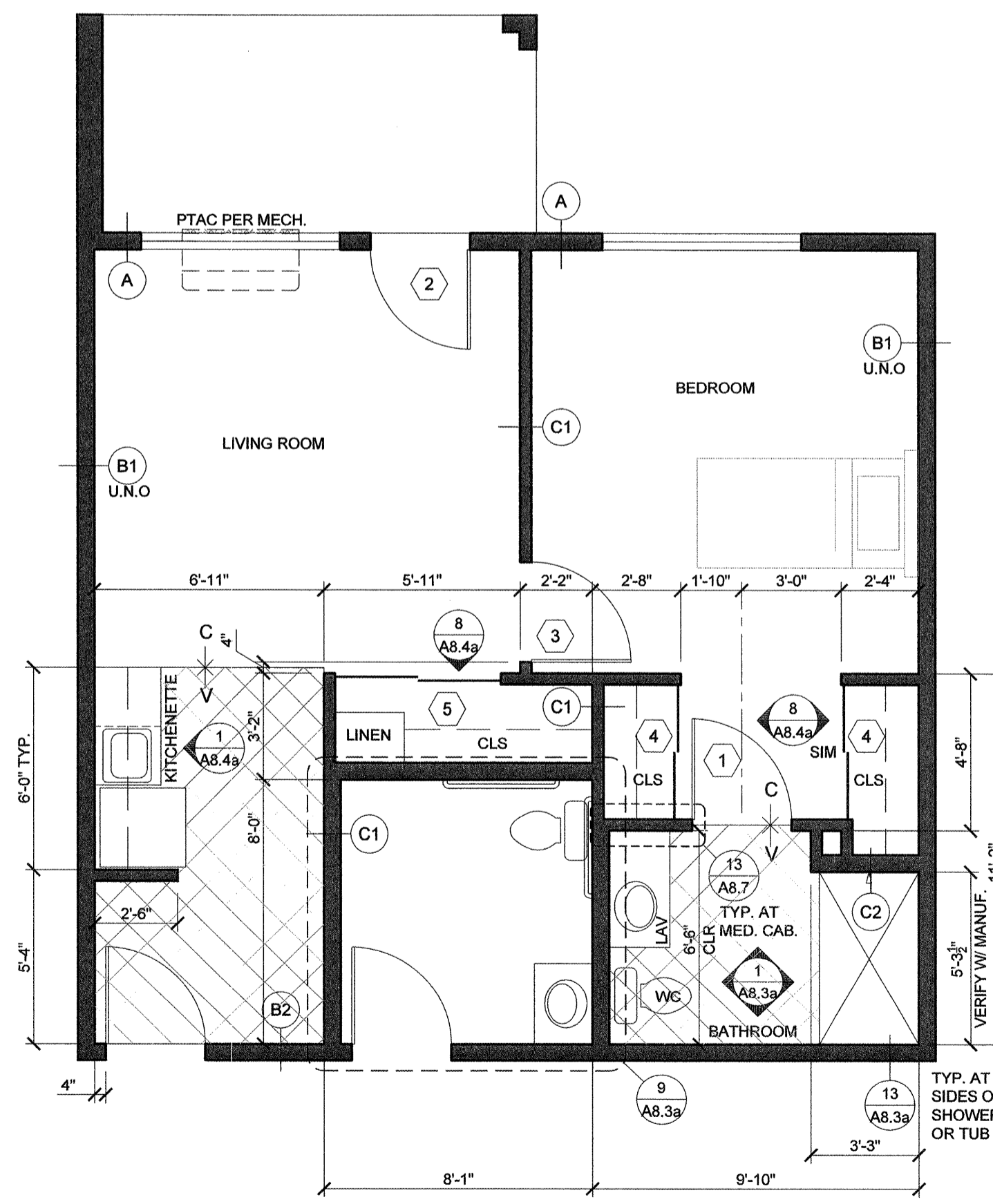
2
B13
SCALE: 1/4"=1'-0"



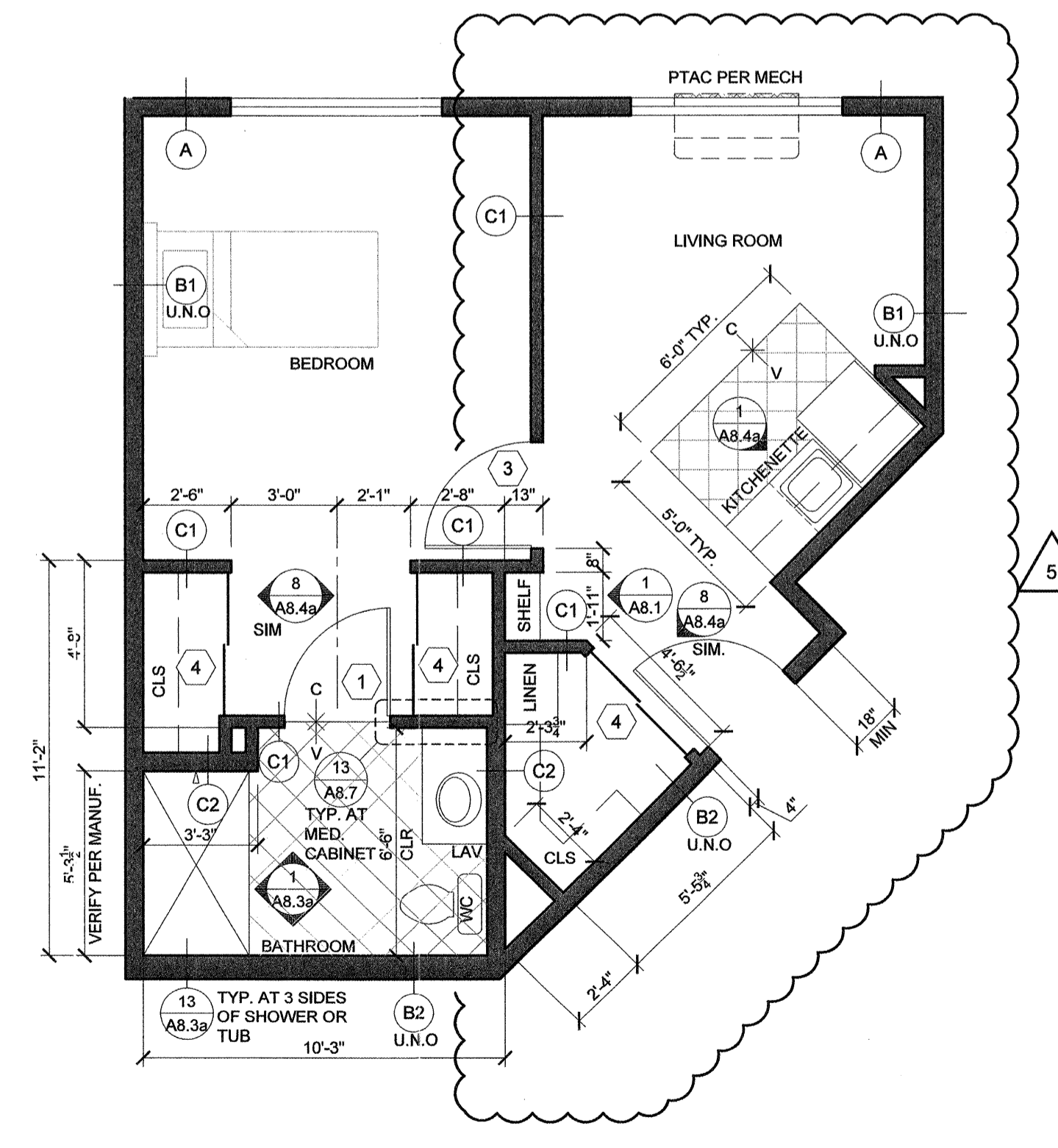
3
B14
SCALE: 1/4"=1'-0"



4
B15
SCALE: 1/4"=1'-0"



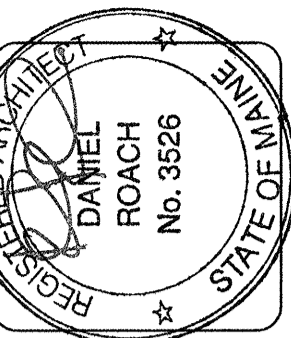
5
B16
SCALE: 1/4"=1'-0"



6
B17
SCALE: 1/4"=1'-0"

GENERAL NOTES:

1. REFER TO 2/A8.3a FOR TYPICAL SUITE BATH LAYOUT.
 2. FRAME AND WIRE FOR FUTURE PTAC RECEPTACLE ON RIGHT SIDE OF BASEBOARD LOCATION. TO REPLACE BASEBOARD IN "C" UNIT SPARE BEDROOMS.
 3. REFER TO PLUMBING DETAILS & GENERAL NOTES / SPECIFICATIONS ON SHEET M2.1 FOR FIRE BARRIER.
 4. REFER TO PLUMBING DETAILS ON SHEETS M2.1 & M2.2.
 5. 1 1/2" GYP. CRETE FLR. COVERING AT UNIT BATHROOMS TYPICAL ALL UNITS. TRANSITION TO 1" AT CENTER OF DOOR.
 6. PROVIDE DRYWALL EXPANSION JOINTS AT CORRIDOR FACE OF ALL COMMON DOORS AND INTERIOR DOOR JAMBS AT TOP FLOOR.
- DOOR DESIGNATION SEE A8.2a
 - INTERIOR ELEV. SEE A8.3a, A8.3b & A8.4 SHEETS
 - DESIGNATES WALL TYPES SHOWN ON COVER SHEET & A7.1a AND A7.1b



lenity
architecture
3150 North Coast SE, Salem, Oregon 97301
P: 503.399.0290 F: 503.399.0565 W: lenityarchitecture.com

COLSON AND COLSON
GENERAL CONTRACTOR, INC.
2280 McILCHRIST STREET SE, SUITE 200
SALEM, OREGON 97302
PHONE (503) 586-7401

PORTLAND RETIREMENT RESIDENCE
802 OCEAN AVE. PORTLAND, MAINE 04103

SUITE PLANS

DATE	8/28/2015
REVISED DATE	9/22/2015
	2/2/2016
	7/18/2016
SHEET	A5.7

NOTE: REFER TO A3 SHEETS FOR WINDOW IDENTIFICATION.

WALL TYPE "B" AT ALL STORAGE AND LAUNDRY ROOMS

NOTE: SEE E5 SHEETS FOR ELECTRICAL LAYOUTS AND M3 SHEET FOR MECH. LAYOUTS OF SUITES

ALL UNITS OTHER THAN THOSE IDENTIFIED AS WHEELCHAIR ACCESSIBLE ARE TO BE ADAPTABLE PER FAIR HOUSING ACT/ADA WITH SHOWER ACCESSIBLE CONVERTIBLE SUITES

©2015 LENITY ARCHITECTURE

s:\m\2015\20151230_Plan_A5.7.dwg pjc:02/02/16 4:03 PM Job Staff - file: s:\m\2015\20151230_Plan_A5.7.dwg - 2