

NOTE:
DIMENSIONS OF SOFFITS ON 1ST FLOOR ARE TAKEN FROM FINISH FLOOR. DIMENSIONS OF SOFFITS ON 2ND FLOOR AND ABOVE ARE TAKEN FROM TOP OF FLYWOOD.

NOTE:
• ALL SLOPED CEILINGS TO BE SKIM COATED.
• SEE SHEET A2.1 FOR CONTROL POINT DIMENSIONS
• SEE DETAIL 1 AND 3 ON S2.3 FOR ALLOWABLE BORING/NOTCHING OF MEMBERS.

JOINTS BETWEEN GYPSUM BOARDS IN SYSTEMS RATED FOR FIRE, SOUND, OR SHEAR MUST BE CONSTRUCTED WITH THE GYPSUM BOARD EDGES IN MODERATE CONTACT. MODERATE CONTACT MEANS THAT THE EDGES ARE ESSENTIALLY TOUCHING EACH OTHER. IT IS POSSIBLE FOR THE GYPSUM BOARD EDGES TO BE IN MODERATE CONTACT YET NOT TOUCH ALONG THE ENTIRE LENGTH OF THE JOINT. THEREFORE, IN GYPSUM BOARD SYSTEMS RATED FOR FIRE, SOUND, OR SHEAR, SMALL GAPS SPACED SPORADICALLY ALONG THE JOINT ARE ACCEPTABLE AS LONG AS THE BOARD EDGES ARE ESSENTIALLY TOUCHING ONE ANOTHER. GAPS UP TO 1/2" MUST BE FILLED WITH A THROUGH-PENETRATION SEALANT (FIRE CAULK). GAPS OVER 1/2" ARE NOT ACCEPTABLE.

NOTE:
FIRE EXTINGUISHERS SHALL BE INSTALLED IN ACCORDANCE WITH SECTION 906 OF THE 2009 IFC AND NFPA 10 2007 EDITION, IN ACCORDANCE WITH NFPA 10, TABLE 5.2.1, FIRE EXTINGUISHERS PLACED NOT TO EXCEED A MAXIMUM OF 75 FEET OF TRAVEL DISTANCE. ALL EXTINGUISHERS SHALL BE RATED AT A MINIMUM OF 2A:10BC, UNLESS OTHERWISE NOTED. ADDITIONAL FIRE EXTINGUISHERS ARE REQUIRED IN THE FOLLOWING COMMON AREAS:
1. ONE 40BC IN THE ELEVATOR EQUIPMENT ROOM. A CLEAN AGENT IS RECOMMENDED, BUT NOT REQUIRED.
2. ONE 2A:10BC IN THE KITCHEN.
3. ONE K CLASS IN THE KITCHEN.

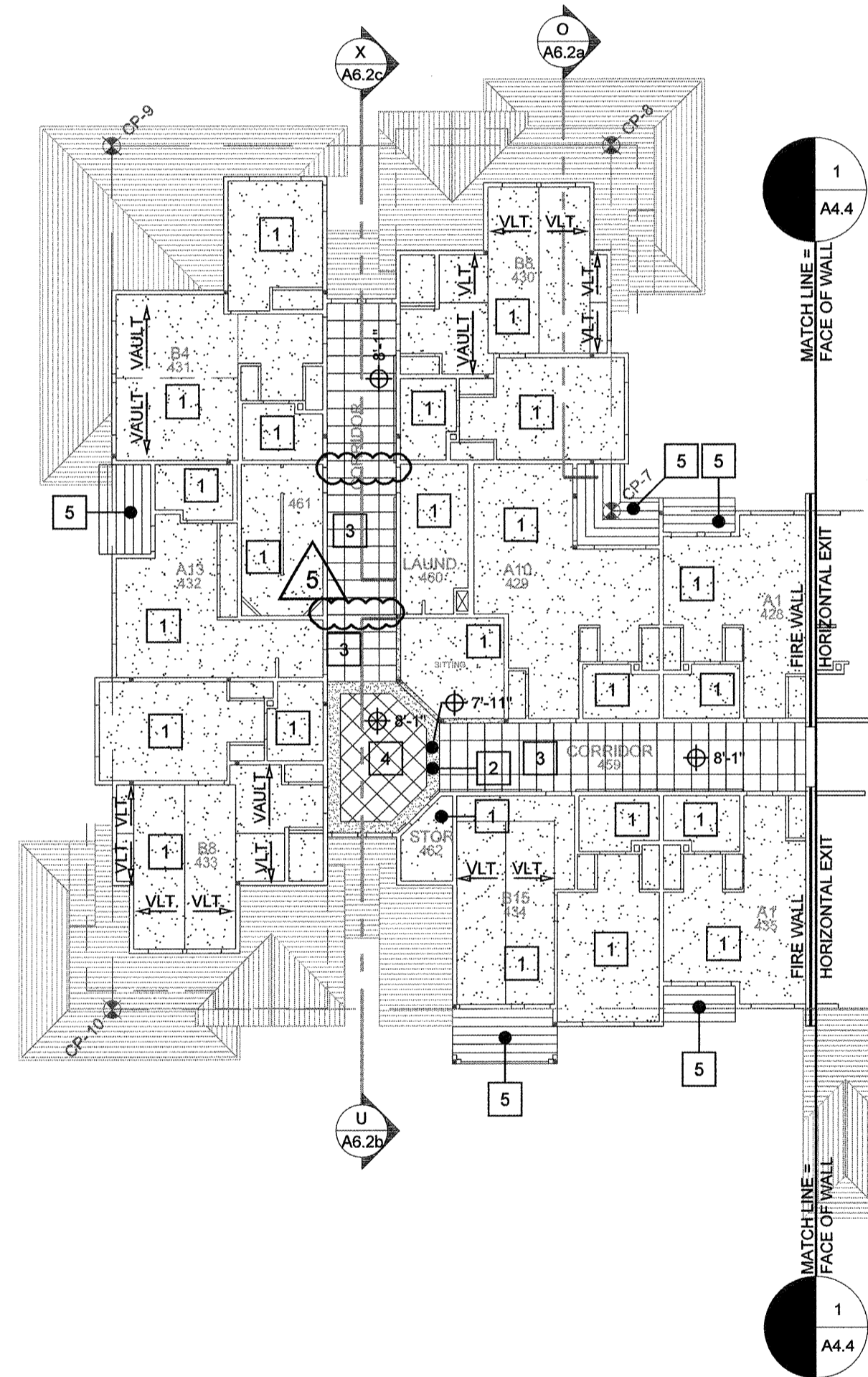
CEILING KEYNOTES

NOTE: ALL ASSEMBLIES OF FIRE RATED CONSTRUCTION ARE TO BE FOLLOWED BY ASSEMBLIES ON SHEET A7.1a / A7.1b

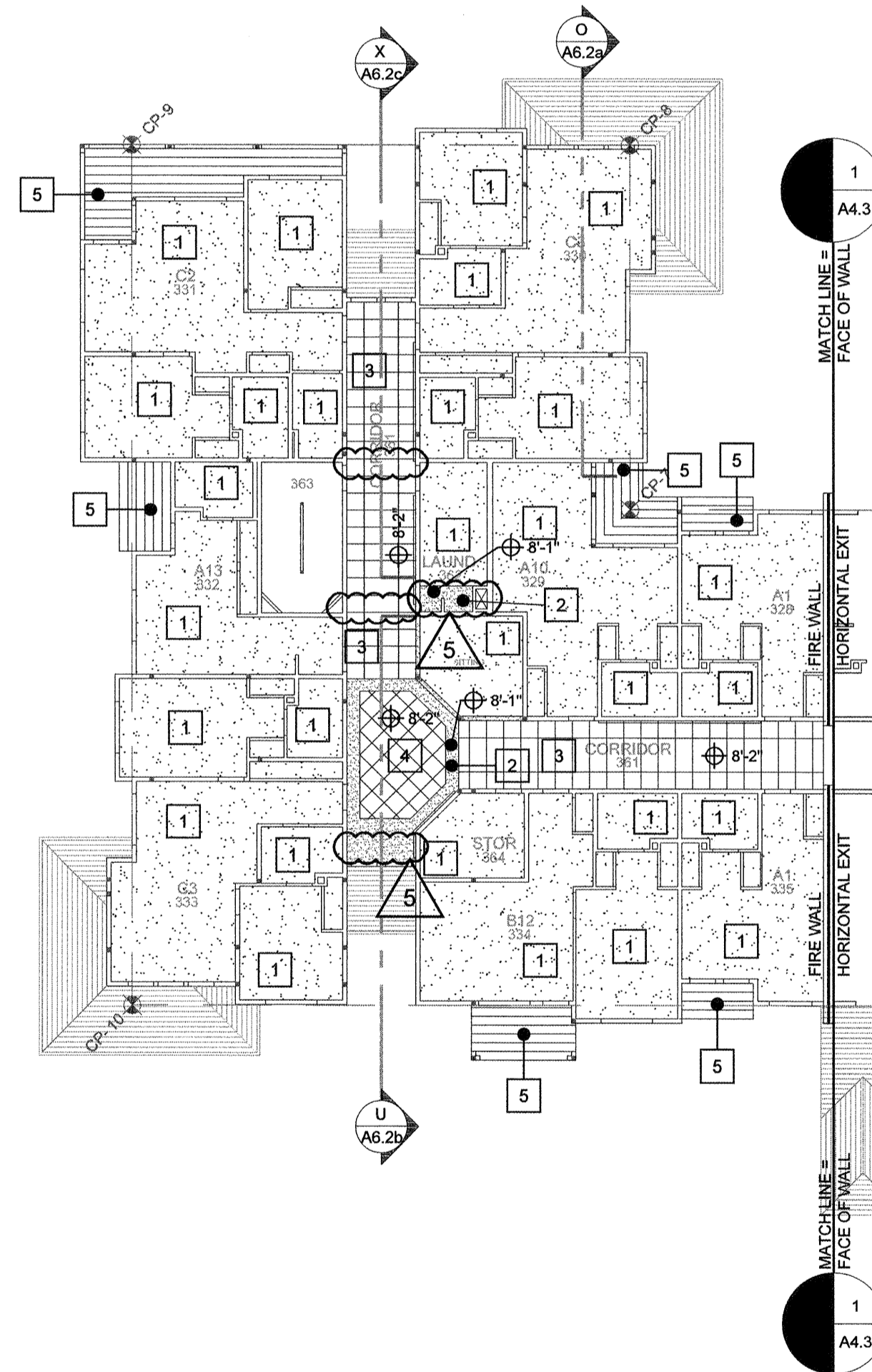
- | | | |
|----|----------|--|
| 1 | TYPE 1- | GYP. BD. CEILING APPLIED UNDERSIDE OF FRAMING, TAPE / TEXTURE FOR PAINT, SEE FINISH SCHEDULE FOR PAINT COLOR AND FINISH TEXTURE |
| 2 | TYPE 2- | GYP. BD. CEILING APPLIED TO DROP SOFFIT FRAMING, TAPE / TEXTURE FOR PAINT, SEE FINISH SCHEDULE FOR PAINT COLOR AND FINISH TEXTURE |
| 3 | TYPE 3- | 2x4 ARMSTRONG SECOND LOOK ANGLED TEGULAR HEAVY DUTY SUSPENDED CEILING TILE, SEE DETAIL 19/A8.5 FOR ADDITIONAL INFORMATION. |
| 4 | TYPE 4- | 2x2 ARMSTRONG SECOND LOOK ANGLED TEGULAR HEAVY DUTY SUSPENDED CEILING TILE, SEE DETAIL 19/A8.5 FOR ADDITIONAL INFORMATION. |
| 5 | TYPE 5- | CONTINUOUS VENTED VINYL SOFFIT, COLOR WHITE. |
| 6 | TYPE 6- | LINE OF SOFFIT FOR SPRINKLER PIPE SHOWN, 8x8 MAX SQUARE TYPICAL. SEE 8/A4.7. |
| 7 | TYPE 7- | MIRROFLEX - OLD WORLD - NEW ORLEANS - BERMUDA BRONZE T417 |
| 8 | TYPE 8- | 2x2 ARMSTRONG FINE FIGURED SQUARE LAY-IN SUSPENDED CEILING TILE. ITEM NO. 1713, COLOR - TECH BLACK, SEE DETAIL 19/A8.5 FOR ADDITIONAL INFORMATION. |
| 9 | TYPE 9- | WOOD STAINED CROWN MOLDING. |
| 10 | TYPE 10- | PAINT GRADE CROWN MOLDING. |
| 11 | TYPE 11- | EXPANSION JOINTS IN GYP. BD. CEILING |
| 12 | TYPE 12- | 2x2 GRIDSTONE BRAND FIRE-SHIELD GYPSUM CEILING PANELS. ITEM NO. GB 5044, SEE DETAIL 19/A8.5 (SIM.) FOR ADDITIONAL INFORMATION. |

CEILING LEGEND

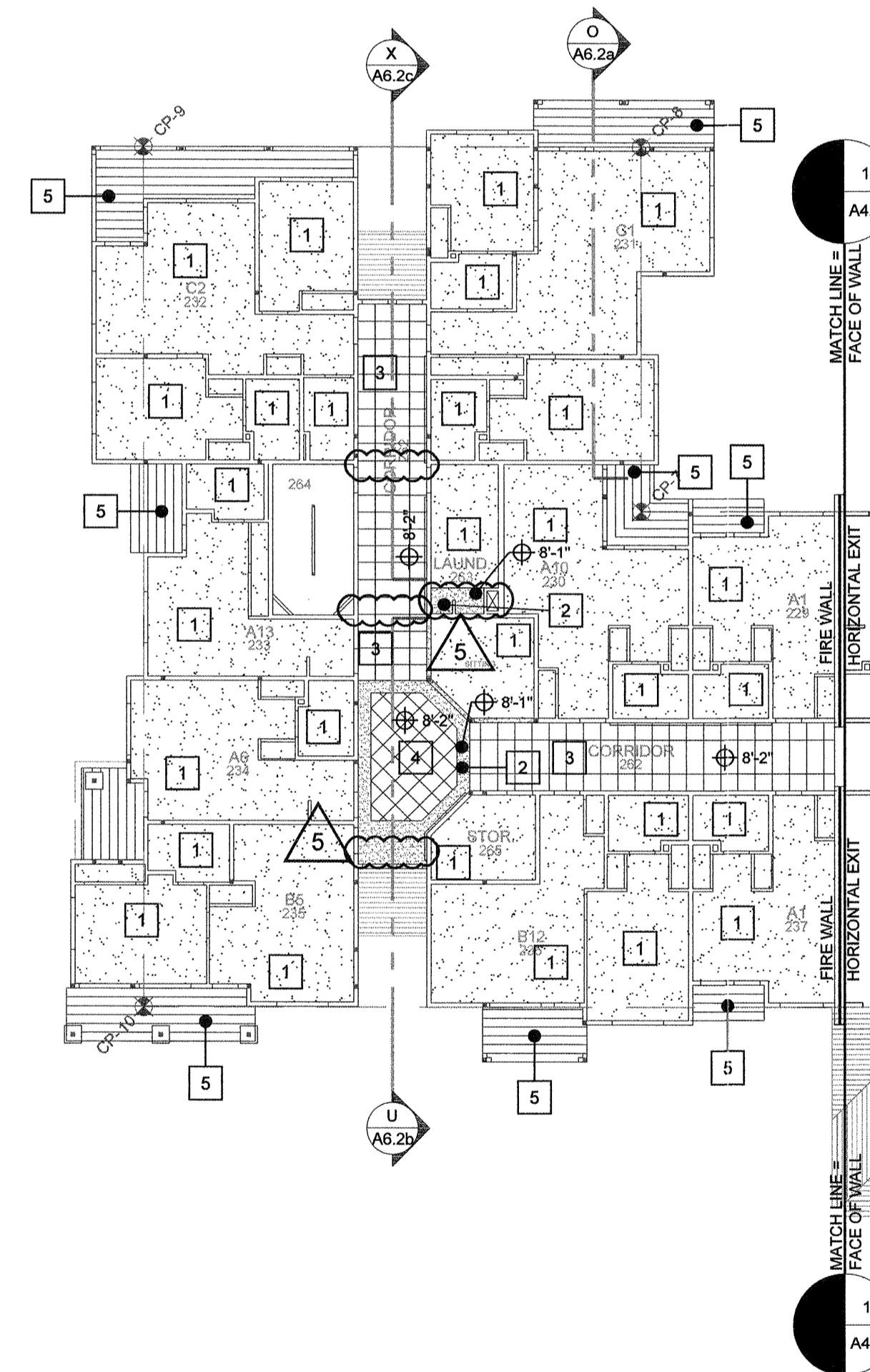
--- HVAC EQUIPMENT IN CEILING, SEE M3 SHEETS FOR SIZING INFORMATION



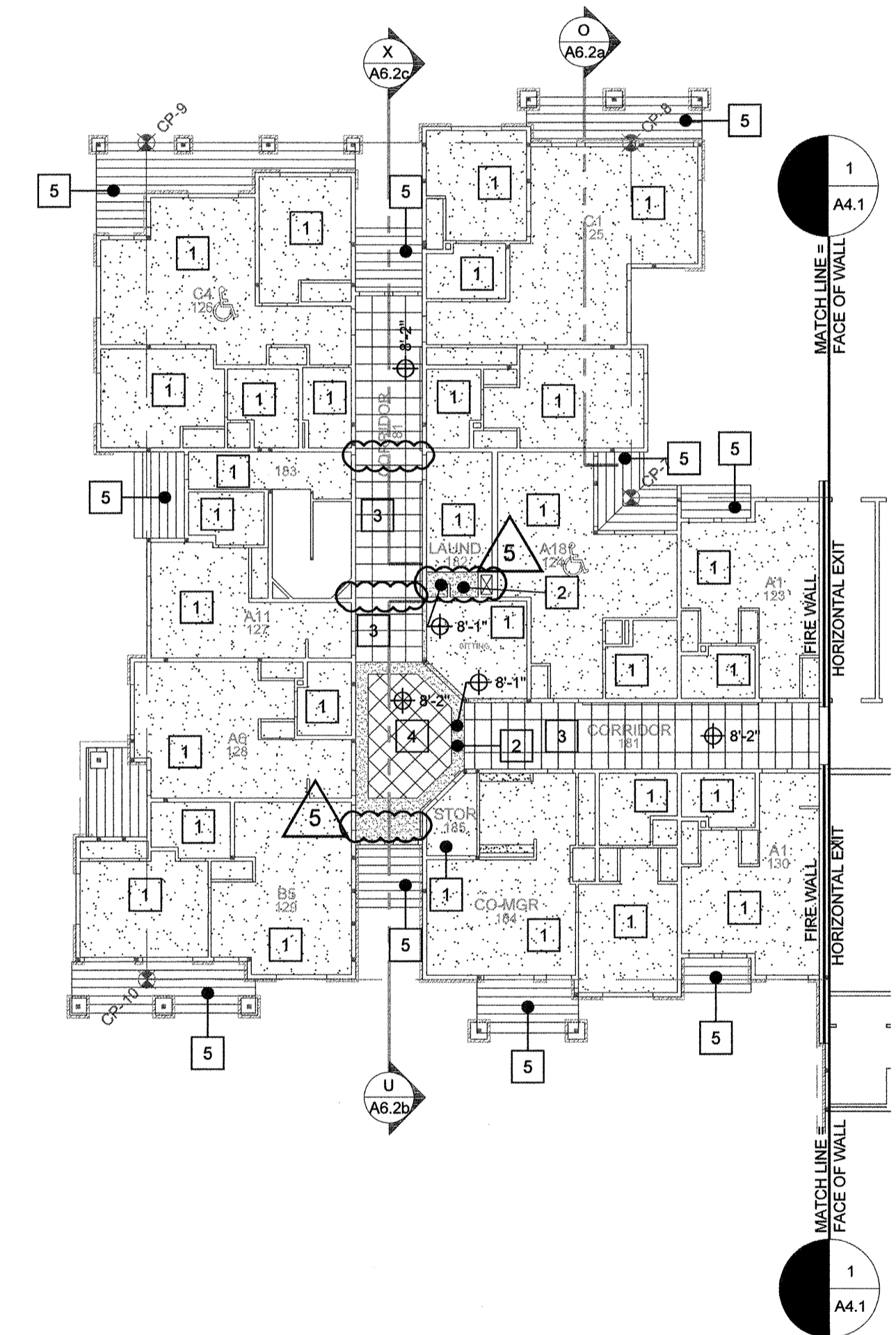
4 FOURTH FLOOR - CEILING
A4.6 SCALE: 1/16" = 1'-0"



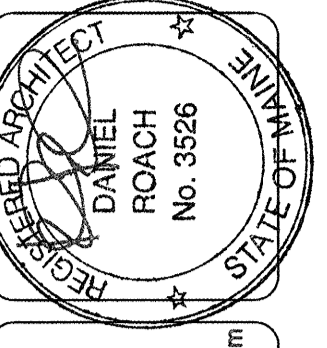
3 THIRD FLOOR - CEILING
A4.6 SCALE: 1/16" = 1'-0"



2 SECOND FLOOR - CEILING
A4.6 SCALE: 1/16" = 1'-0"



1 FIRST FLOOR - CEILING
A4.6 SCALE: 1/16" = 1'-0"



lenity
architecture
3150 Kenna Court SE, Salem, Oregon 97301
#503.399.1090 #503.399.0585 www.lenityarchitecture.com

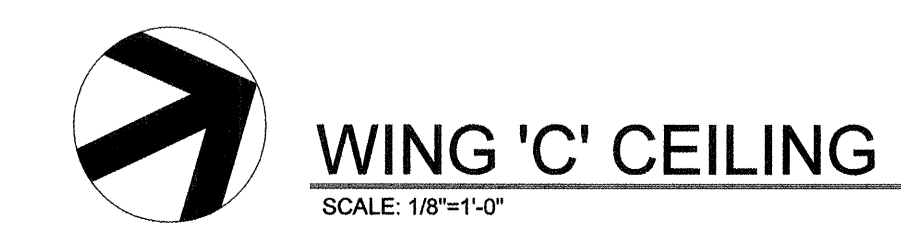
COLSON AND COLSON
GENERAL CONTRACTOR, INC.
2280 MCGILCHRIST STREET SE, SUITE 200
SALEM, OREGON, 97302
PHONE (503) 586-7401

PORTLAND
RETIREMENT RESIDENCE
802 OCEAN AVE. PORTLAND, MAINE 04103

WING 'C'
CEILING PLAN

DATE
8/28/2015
REVISED DATE
9/22/2015
2/2/2016
7/18/2016

SHEET
A4.6



www.9/18/2016 4:48 PM jobp_00122/2015 1.34 194 job.pdf \\s37\hawaii\newportland\archival\1 ceiling plan.dwg A4.6