

JOINTS BETWEEN GYPSUM BOARDS IN SYSTEMS RATED FOR FIRE, SOUND, OR SHEAR MUST BE CONSTRUCTED WITH THE GYPSUM BOARD EDGES IN MODERATE CONTACT. MODERATE CONTACT MEANS THAT THE EDGES ARE ESSENTIALLY TOUCHING EACH OTHER. IT IS POSSIBLE FOR THE GYPSUM BOARD EDGES TO BE IN MODERATE CONTACT YET NOT TOUCH ALONG THE ENTIRE LENGTH OF THE JOINT. THEREFORE, IN GYPSUM BOARD SYSTEMS RATED FOR FIRE, SOUND, OR SHEAR, SMALL GAPS SPACED SPORADICALLY ALONG THE JOINT ARE ACCEPTABLE AS LONG AS THE BOARD EDGES ARE ESSENTIALLY TOUCHING ONE ANOTHER. GAPS UP TO 1/8" MUST BE FILLED WITH A THROUGH-PENETRATION SEALANT (FIRE CAULK). GAPS OVER 1/8" ARE NOT ACCEPTABLE.

NOTE: DIMENSIONS OF SOFFITS ON 1ST FLOOR ARE TAKEN FROM FINISH FLOOR. DIMENSIONS OF SOFFITS ON 2ND FLOOR AND ABOVE ARE TAKEN FROM TOP OF PLYWOOD.

NOTE:
 • ALL SLOPED CEILINGS TO BE SKIM COATED.
 • SEE SHEET A2.1 FOR CONTROL POINT DIMENSIONS
 • SEE DETAIL 1 AND 3 ON S2.3 FOR ALLOWABLE BORING/NOTCHING OF MEMBERS.

NOTE: FIRE EXTINGUISHERS SHALL BE INSTALLED IN ACCORDANCE WITH SECTION 908 OF THE 2009 IFC AND NFPA 10 2007 EDITION. IN ACCORDANCE WITH NFPA 10: TABLE 5.2.1, FIRE EXTINGUISHERS PLACED NOT TO EXCEED A MAXIMUM OF 75 FEET OF TRAVEL DISTANCE. ALL EXTINGUISHERS SHALL BE RATED AT A MINIMUM OF 2A:10BC, UNLESS OTHERWISE NOTED. ADDITIONAL FIRE EXTINGUISHERS ARE REQUIRED IN THE FOLLOWING COMMON AREAS:

- ONE 40BC IN THE ELEVATOR EQUIPMENT ROOM. A CLEAN AGENT IS RECOMMENDED, BUT NOT REQUIRED.
- ONE 2A:10BC IN THE KITCHEN.
- ONE K CLASS IN THE KITCHEN.

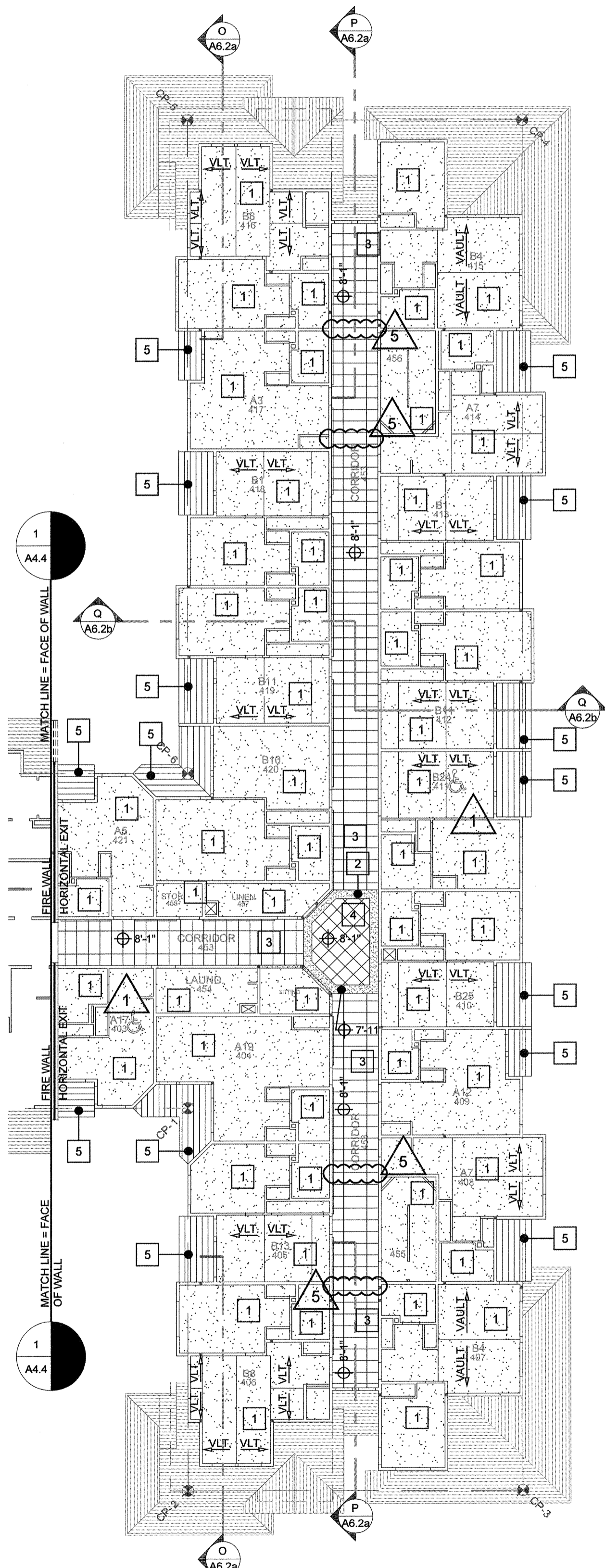
CEILING LEGEND

--- HVAC EQUIPMENT IN CEILING, SEE M3 SHEETS FOR SIZING INFORMATION

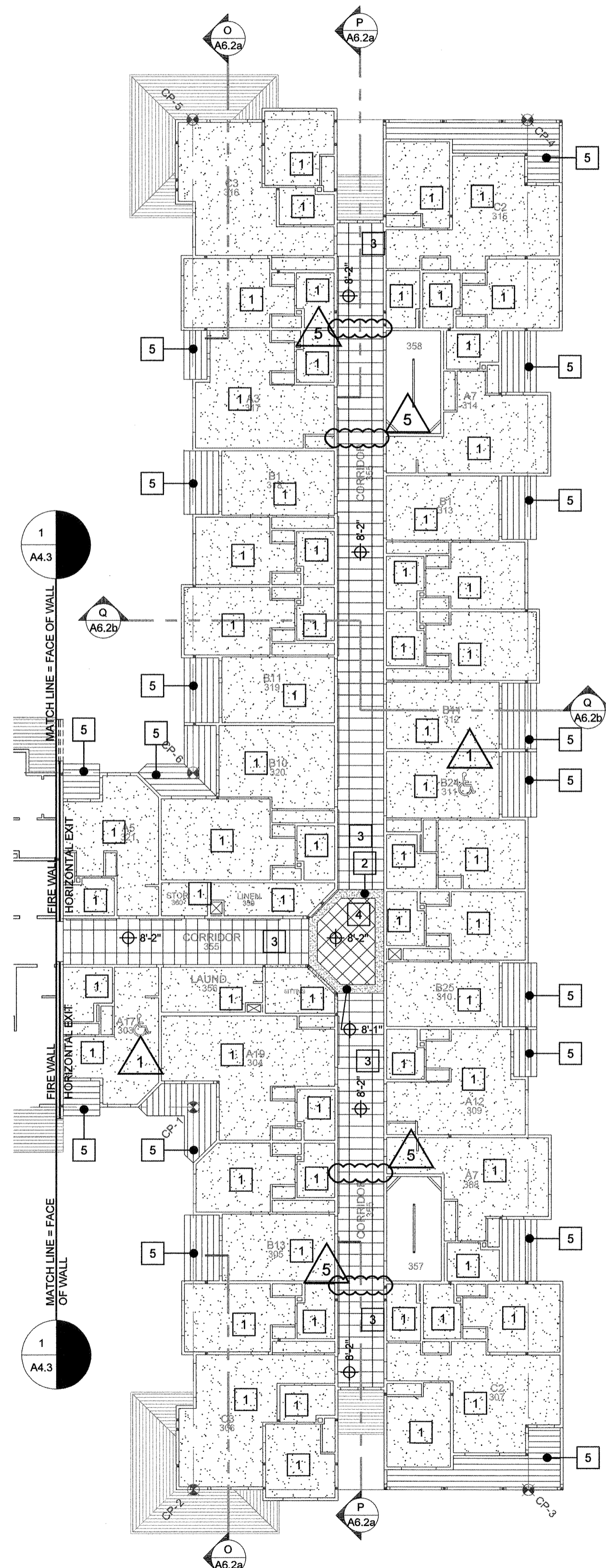
CEILING KEYNOTES

NOTE: ALL ASSEMBLIES OF FIRE RATED CONSTRUCTION ARE TO BE FOLLOWED BY ASSEMBLIES ON SHEET A7.1a / A7.1b

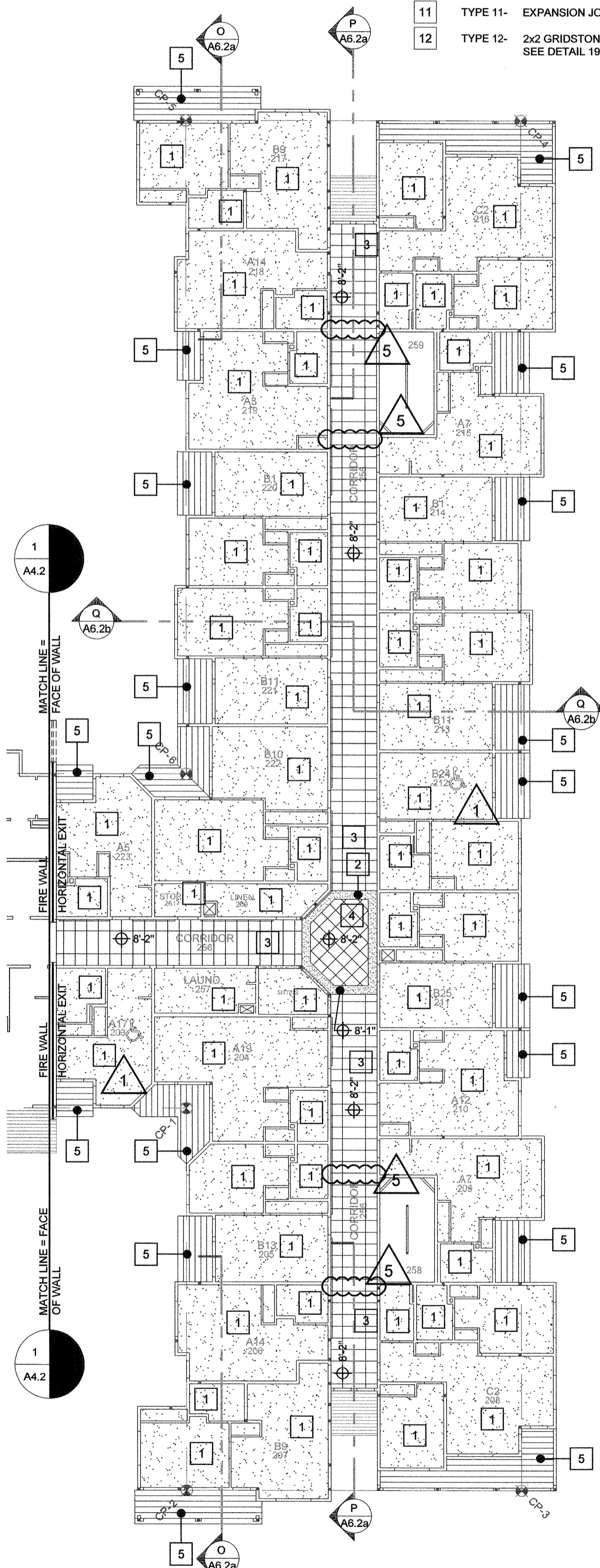
- | | | |
|----|----------|--|
| 1 | TYPE 1- | GYP. BD. CEILING APPLIED UNDERSIDE OF FRAMING, TAPE / TEXTURE FOR PAINT, SEE FINISH SCHEDULE FOR PAINT COLOR AND FINISH TEXTURE. |
| 2 | TYPE 2- | GYP. BD. CEILING APPLIED TO DROP SOFFIT FRAMING, TAPE / TEXTURE FOR PAINT, SEE FINISH SCHEDULE FOR PAINT COLOR AND FINISH TEXTURE. |
| 3 | TYPE 3- | 2x4 ARMSTRONG SECOND LOOK ANGLED TEGULAR HEAVY DUTY SUSPENDED CEILING TILE. SEE DETAIL 19/A8.5 FOR ADDITIONAL INFORMATION. |
| 4 | TYPE 4- | 2x2 ARMSTRONG SECOND LOOK ANGLED TEGULAR HEAVY DUTY SUSPENDED CEILING TILE. SEE DETAIL 19/A8.5 FOR ADDITIONAL INFORMATION. |
| 5 | TYPE 5- | CONTINUOUS VENTED VINYL SOFFIT, COLOR WHITE. |
| 6 | TYPE 6- | LINE OF SOFFIT FOR SPRINKLER PIPE SHOWN, 8x8 MAX SQUARE TYPICAL. SEE 8/A4.7. |
| 7 | TYPE 7- | MIRROFLEX - OLD WORLD - NEW ORLEANS- BERMUDA BRONZE 'N417 |
| 8 | TYPE 8- | 2x2 ARMSTRONG FINE FIGURED SQUARE LAY-IN SUSPENDED CEILING TILE. ITEM NO. 1713, COLOR - TECH BLACK. SEE DETAIL 19/A8.5 FOR ADDITIONAL INFORMATION. |
| 9 | TYPE 9- | WOOD STAINED CROWN MOLDING. |
| 10 | TYPE 10- | PAINT GRADE CROWN MOLDING. |
| 11 | TYPE 11- | EXPANSION JOINTS IN GYP. BD. CEILING |
| 12 | TYPE 12- | 2x2 GRIDSTONE BRAND FIRE-SHIELD GYPSUM CEILING PANELS. ITEM NO. GB 5044. SEE DETAIL 19/A8.5 (SIM.) FOR ADDITIONAL INFORMATION. |



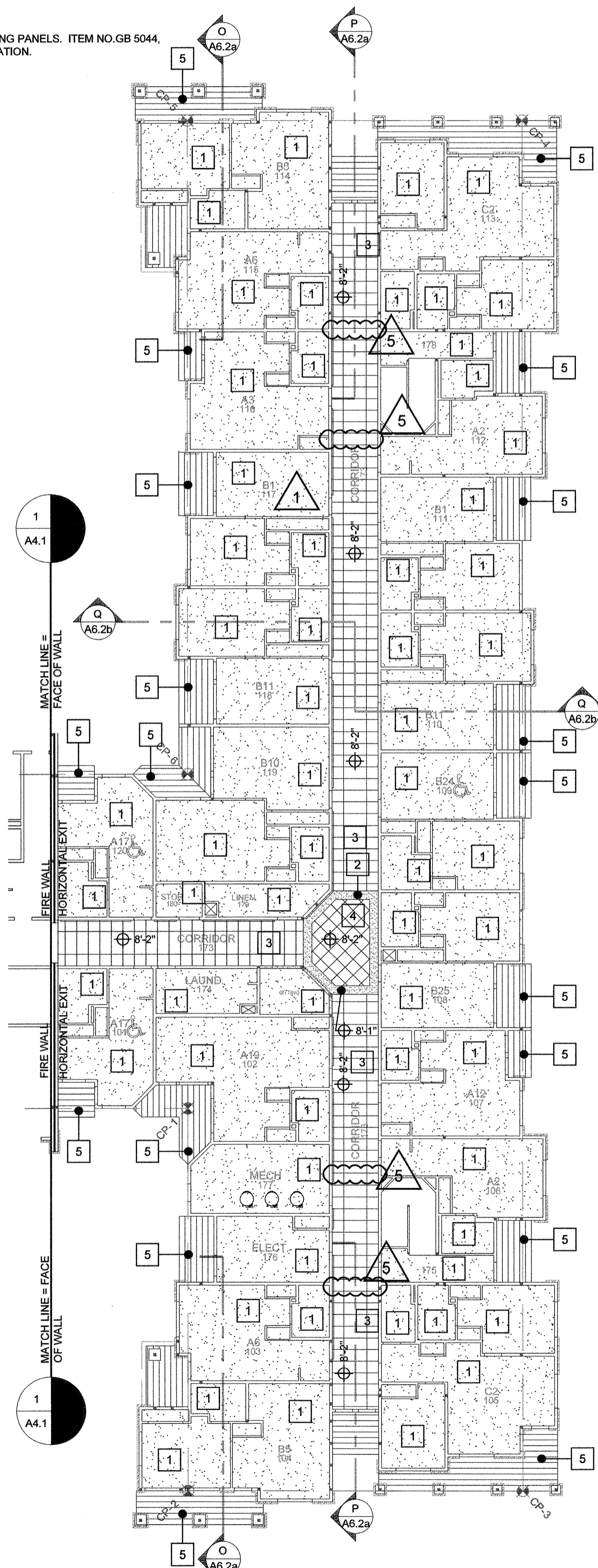
4 FOURTH FLOOR - CEILING
 SCALE: 1/16" = 1'-0"



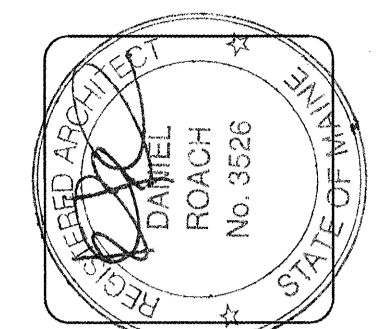
3 THIRD FLOOR - CEILING
 SCALE: 1/16" = 1'-0"



2 SECOND FLOOR - CEILING
 SCALE: 1/16" = 1'-0"



1 FIRST FLOOR - CEILING
 SCALE: 1/16" = 1'-0"



lenity
 architecture
 3150 Kelso Court SE, Salem, Oregon 97302
 P: 503.399.1050 W: lenityarchitecture.com

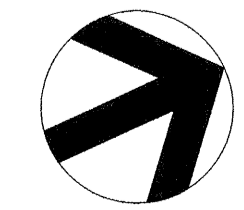
COLSON AND COLSON
 GENERAL CONTRACTOR, INC.
 2280 McGILCHRIST STREET SE, SUITE 200
 SALEM, OREGON, 97302
 PHONE (503) 586-7401

PORTLAND
 RETIREMENT RESIDENCE
 802 OCEAN AVE. PORTLAND, MAINE 04103

WING 'B'
 CEILING PLAN

DATE: 8/28/2015
 REVISED DATE:
 9/22/2015
 2/2/2016
 7/18/2016

SHEET
 A4.5



WING 'B' CEILING
 SCALE: 1/8" = 1'-0"

8/19/2015 4:40 PM Job: 1503202015 1:30 PM Job Path: R:\2015\1503202015\portland\residence\4.5 ceiling plan.rvt A4.5