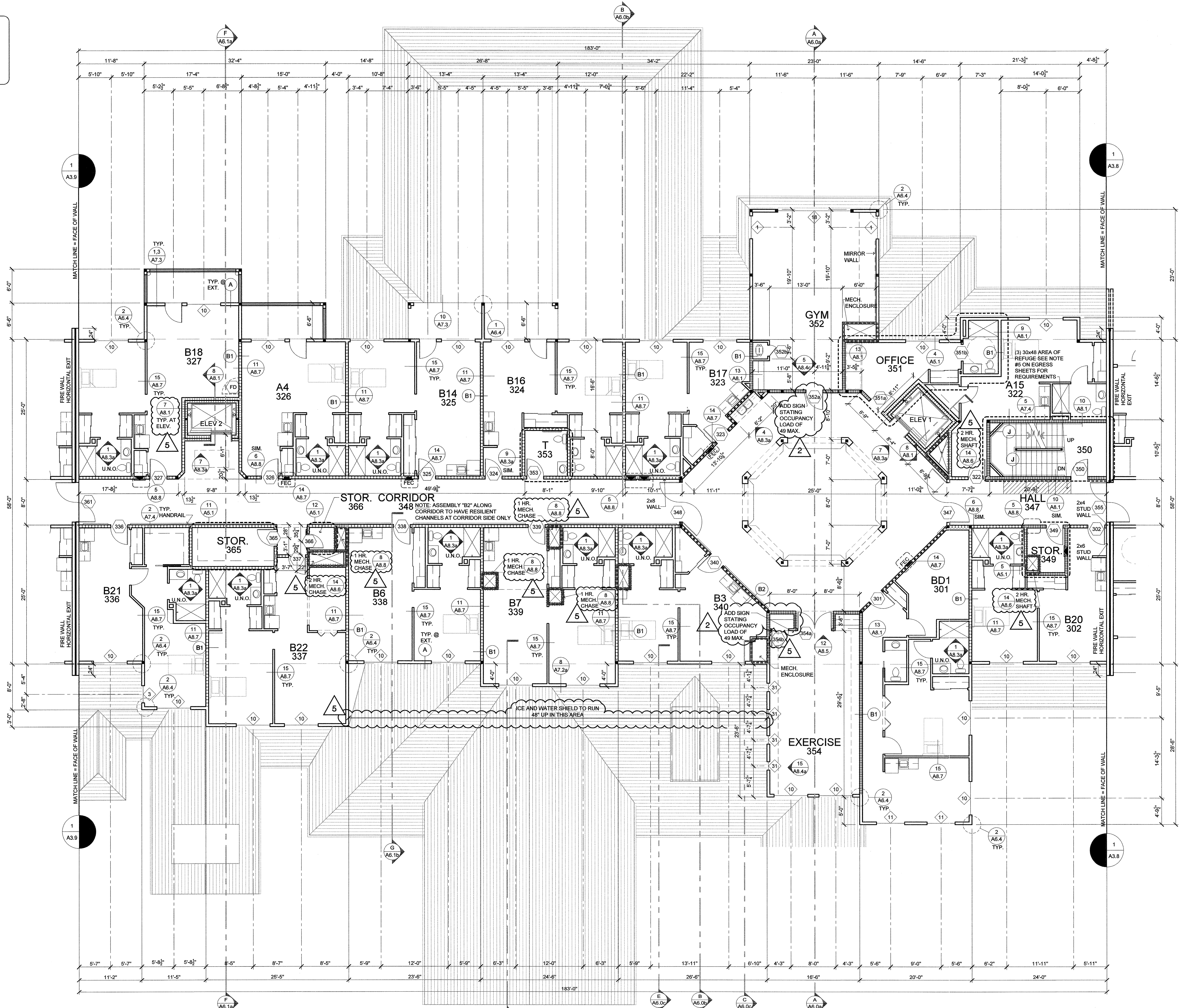


11/15/2016 10:26 AM pwp_jed0202016_025.rvt (p) 11/15/2016 10:26 AM pwp_jed0202016_025.rvt



- LEGEND**
- ACCESSIBLE SUITE
 - TUB/SHOWER
 - ROLL-IN SHOWER
 - CONTROL POINT
 - DESIGNATES WALL TYPES SHOWN SHEETS A7.1a & A7.1b
 - DOOR DESIGNATION. SEE A8.2a
 - LOCATION OF FRAMING FOR FUTURE DOOR. SEE 10/S3.3
 - WINDOW DESIGNATION. SEE A8.0a
1 = WINDOW GLAZING DESIGNATION (TEMPERED)
 - AREA SEPARATION WALL FIRE WALL/HORIZONTAL EXIT SEE SHEET A8.7 FOR DETAILS
 - ONE HOUR PARTITION
 - EPOXY
 - CERAMIC TILE
 - FEC SEE 14/A8.7
 - ELECTRICAL PANEL SEE DETAIL 5/A8.8
 - FIRE PARTITION WALL. SEE DEFINITION ON EGRESS SHEETS
 - SMOKE BARRIER WALL. SEE DEFINITION ON EGRESS SHEETS
 - OCCUPANCY SEPARATION / FIRE BARRIER SEE DETAIL 9/13/A8.1 AND 10/A8.7 AND EGRESS SHEETS
 - SOUND INSULATED MECH. CHASE SEE DETAIL 8/A8.8 & 14/A8.6
- GENERAL NOTES:**
1. PROVIDE DRYWALL EXPANSION JOINTS AT CORRIDOR FACE OF ALL INTERIOR DOOR JAMBS
 2. INSTALL BACKING AT ALL HOLD OPENS, FUTURE GRAB BARS
 3. REFER TO ROOF PLAN FOR DOWNSPOUT LOCATIONS.
 4. REFER TO A7.1a AND A7.1b FOR TYPICAL WALL ASSEMBLIES.
 5. ALL EXTERIOR PARTY, CORRIDOR AND PLUMBING WALLS TO BE 2x6 STUDS AT 16" o.c. UNLESS OTHERWISE NOTED.
 6. ALL JAMB FRAMING AT HINGE SIDE TO BE 4" U.O.N.
 7. REFER TO SHEETS A7.6, A7.7 AND A8.7, A8.8 FOR FIRE RATED CONSTRUCTION DETAILS AND INFO.
 8. ELEVATOR EQUIPMENT ROOMS SHALL BE 2-HR RATED CONSTRUCTION
 9. SEE DETAIL 12/A8.2b FOR MINIMUM ACCESSIBLE FLOOR CLEARANCE

NOTE: DIMENSIONS OF SOFFITS ON 1ST FLOOR ARE TAKEN FROM FINISH FLOOR. DIMENSIONS OF SOFFITS ON 2ND FLOOR AND ABOVE ARE TAKEN FROM TOP OF PLYWOOD.

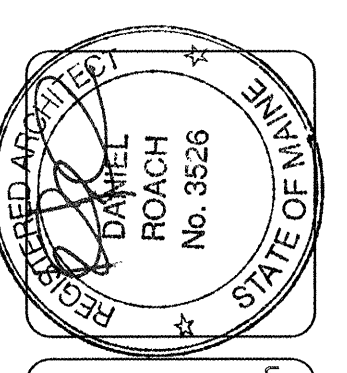
NOTE:

- ALL SLOPED CEILINGS TO BE SKIM COATED.
- SEE SHEET A2.1 FOR CONTROL POINT DIMENSIONS
- SEE DETAIL 1 AND 3 ON S2.3 FOR ALLOWABLE BORING/NOTCHING OF MEMBERS.

NOTE: FIRE EXTINGUISHERS SHALL BE INSTALLED IN ACCORDANCE WITH SECTION 906 OF THE 2009 IFC AND NFPA 10 2007 EDITION. IN ACCORDANCE WITH NFPA 10, TABLE 5.2.1, FIRE EXTINGUISHERS PLACED NOT TO EXCEED A MAXIMUM OF 75 FEET OF TRAVEL DISTANCE. ALL EXTINGUISHERS SHALL BE RATED AT A MINIMUM OF 2A:10BC. UNLESS OTHERWISE NOTED, ADDITIONAL FIRE EXTINGUISHERS ARE REQUIRED IN THE FOLLOWING COMMON AREAS:

1. ONE 40BC IN THE ELEVATOR EQUIPMENT ROOM. A CLEAN AGENT IS RECOMMENDED, BUT NOT REQUIRED.
2. ONE 2A:10BC IN THE KITCHEN.
3. ONE K CLASS IN THE KITCHEN.

JOINTS BETWEEN GYPSUM BOARDS IN SYSTEMS RATED FOR FIRE, SOUND, OR SHEAR MUST BE CONSTRUCTED WITH THE GYPSUM BOARD EDGES IN MODERATE CONTACT. MODERATE CONTACT MEANS THAT THE EDGES ARE ESSENTIALLY TOUCHING EACH OTHER. IT IS POSSIBLE FOR THE GYPSUM BOARD EDGES TO BE IN MODERATE CONTACT YET NOT TOUCH ALONG THE ENTIRE LENGTH OF THE JOINT. THEREFORE, IN GYPSUM BOARD SYSTEMS RATED FOR FIRE, SOUND, OR SHEAR, SMALL GAPS SPACED SPORADICALLY ALONG THE JOINT ARE ACCEPTABLE AS LONG AS THE BOARD EDGES ARE ESSENTIALLY TOUCHING ONE ANOTHER. GAPS UP TO 1/4" MUST BE FILLED WITH A THROUGH-PENETRATION SEALANT (FIRE CAULK). GAPS OVER 1/4" ARE NOT ACCEPTABLE.



lenity architecture
3150 Lettie Court SE, Salem, Oregon 97301
P: 503 399 1030 F: 503 399 0665 w: lenityarchitecture.com

COLSON AND COLSON
GENERAL CONTRACTOR, INC.
2280 McILCHRIST STREET, SUITE 200
SALEM, OREGON 97302
PHONE (503) 586-7401

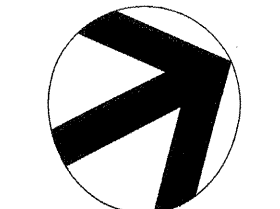
PORTLAND
RETIREMENT RESIDENCE
802 OCEAN AVE., PORTLAND, MAINE 04103

3RD FLOOR
CORE PLAN

DATE
8/28/2015

REVISED DATE
9/22/2015
2/2/2016
7/18/2016

SHEET
A3.7



THIRD FLOOR CORE PLAN
SCALE: 1/8"=1'-0"