

LEGEND

- ACCESSIBLE SUITE
- TUBSHOWER
- ROLL-IN SHOWER
- CONTROL POINT
- DESIGNATES WALL TYPES
SHOWN SHEETS A7.1a & A7.1b
- DOOR DESIGNATION. SEE A8.2a
- LOCATION OF FRAMING FOR
FUTURE DOOR. SEE 10/S3.3
- WINDOW DESIGNATION. SEE A8.0a
1 = WINDOW GLAZING DESIGNATION
(TEMPERED)
- AREA SEPARATION WALL
FIRE WALL/HORIZONTAL EXIT
SEE SHEET A8.7 FOR DETAILS
- ONE HOUR PARTITION
- EPOXY
- CERAMIC TILE
- FEC SEE 14/A8.7
- ELECTRICAL PANEL SEE DETAIL 5/A8.8
- FIRE PARTITION WALL. SEE DEFINITION
ON EGRESS SHEETS
- SMOKE BARRIER WALL. SEE
DEFINITION ON EGRESS SHEETS

SOUND INSULATED MECH. CHASE
SEE DETAIL 8/A8.8 & 14/A8.6

GENERAL NOTES:

1. PROVIDE DRYWALL EXPANSION JOINTS AT CORRIDOR FACE OF ALL INTERIOR DOOR JAMBS
2. INSTALL BACKING AT ALL HOLD OPENS. FUTURE GRAB BARS
3. REFER TO ROOF PLAN FOR DOWNSPOUT LOCATIONS.
4. REFER TO 1/4" A5 SHEETS FOR ENLARGED SUITE PLANS.
5. REFER TO A7.1a AND A7.1b FOR TYPICAL WALL ASSEMBLIES.
6. ALL EXTERIOR, PARTY, CORRIDOR AND PLUMBING WALLS TO BE 2x6 STUDS AT 16" oc UNLESS OTHERWISE NOTED.
7. ALL JAMB FRAMING AT HINGE SIDE TO BE 4" U.O.N.
8. REFER TO SHEETS A7.6, A7.7 AND A8.7, A8.8 FOR FIRE RATED CONSTRUCTION DETAILS AND INFO.
9. ELEVATOR EQUIPMENT ROOMS SHALL BE 2-HR RATED CONSTRUCTION.
10. SEE DETAIL 12/A8.2b FOR MINIMUM ACCESSIBLE FLOOR CLEARANCE

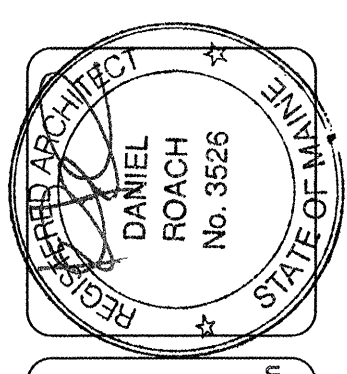
NOTE:
DIMENSIONS OF SOFFITS ON 1ST FLOOR ARE TAKEN FROM FINISH FLOOR. DIMENSIONS OF SOFFITS ON 2ND FLOOR AND ABOVE ARE TAKEN FROM TOP OF PLYWOOD.

NOTE:
• ALL SLOPED CEILINGS TO BE SKIM COATED.
• SEE SHEET A2.1 FOR CONTROL POINT DIMENSIONS.
• SEE DETAIL 1 AND 3 ON S2.3 FOR ALLOWABLE BORING/NOTCHING OF MEMBERS.

NOTE:
FIRE EXTINGUISHERS SHALL BE INSTALLED IN ACCORDANCE WITH SECTION 906 OF THE 2009 IFC AND NFPA 10 2007 EDITION. IN ACCORDANCE WITH NFPA 10, TABLE 9.2.1, FIRE EXTINGUISHERS PLACED NOT TO EXCEED A MAXIMUM OF 75 FEET OF TRAVEL DISTANCE. ALL EXTINGUISHERS SHALL BE RATED AT A MINIMUM OF 2A:10BC. UNLESS OTHERWISE NOTED. ADDITIONAL FIRE EXTINGUISHERS ARE REQUIRED IN THE FOLLOWING COMMON AREAS:

1. ONE 40BC IN THE ELEVATOR EQUIPMENT ROOM. A CLEAN AGENT IS RECOMMENDED, BUT NOT REQUIRED.
2. ONE 2A:10BC IN THE KITCHEN.
3. ONE K CLASS IN THE KITCHEN.

JOINTS BETWEEN GYPSUM BOARDS IN SYSTEMS RATED FOR FIRE, SOUND, OR SHEAR MUST BE CONSTRUCTED WITH THE GYPSUM BOARD EDGES IN MODERATE CONTACT. MODERATE CONTACT MEANS THAT THE EDGES ARE ESSENTIALLY TOUCHING EACH OTHER. IT IS POSSIBLE FOR THE GYPSUM BOARD EDGES TO BE IN MODERATE CONTACT YET NOT TOUCH ALONG THE ENTIRE LENGTH OF THE JOINT. THEREFORE, IN GYPSUM BOARD SYSTEMS RATED FOR FIRE, SOUND, OR SHEAR, SMALL GAPS SPACED SPORADICALLY ALONG THE JOINT ARE ACCEPTABLE AS LONG AS THE BOARD EDGES ARE ESSENTIALLY TOUCHING ONE ANOTHER. GAPS UP TO 1/2" MUST BE FILLED WITH A THROUGH-PENETRATION SEALANT (FIRE CAULK). GAPS OVER 1/2" ARE NOT ACCEPTABLE.



lenity architecture
3150 Kenton Court, SE, Salem, Oregon 97301
P: 503.399.1050 F: 503.399.0505
W: lenityarchitecture.com

COLSON AND COLSON GENERAL CONTRACTOR, INC.
2280 McCLURIST STREET SE, SUITE 200 SALEM, OREGON, 97302
PHONE (503) 586-7401

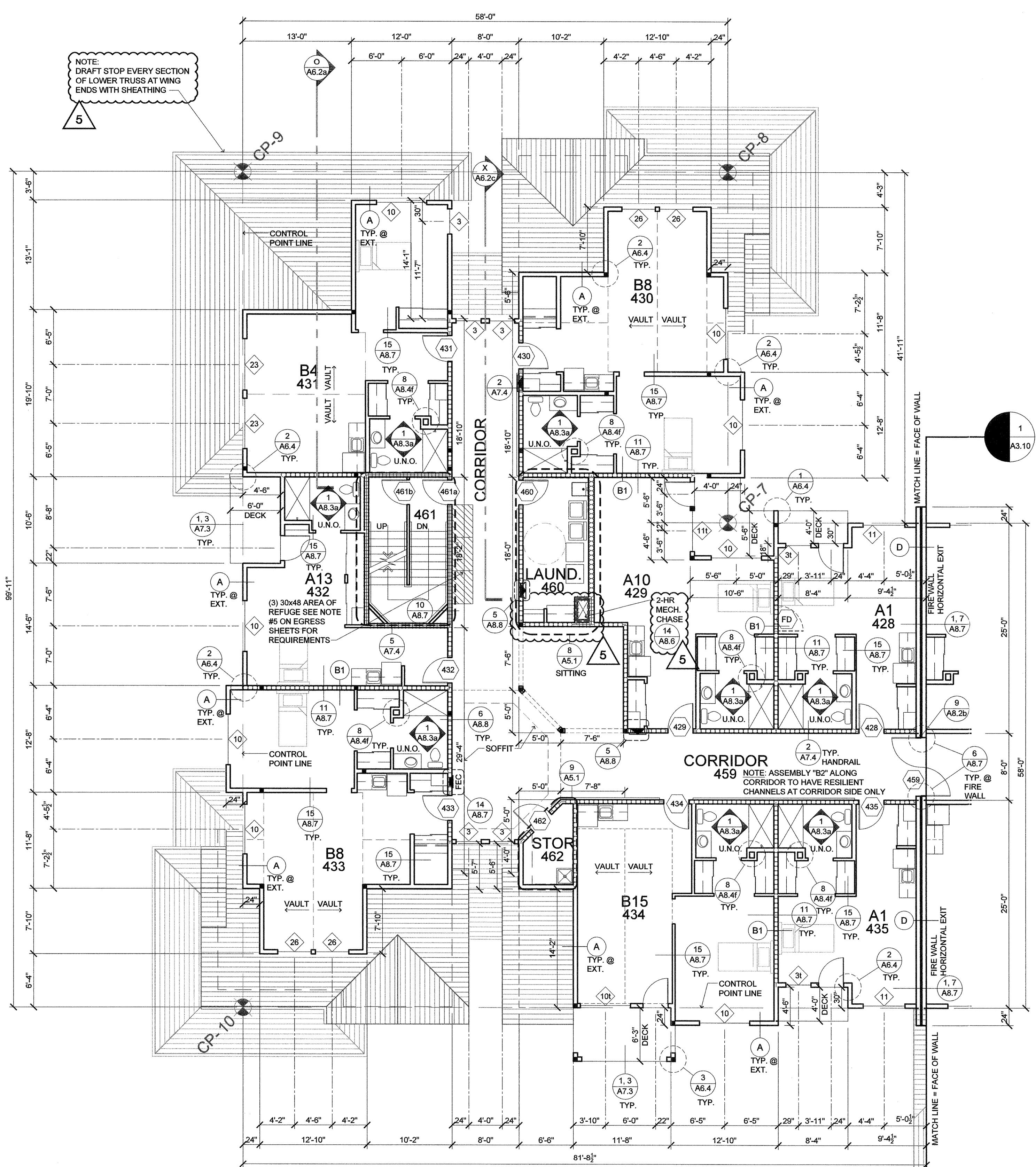
PORTLAND RETIREMENT RESIDENCE
802 OCEAN AVE. PORTLAND, MAINE 04103

4TH FLOOR WING 'C' PLAN

DATE
8/28/2015

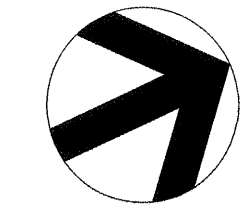
REVISED DATE
▲ 9/22/2015
▲ 2/2/2016
▲ 7/18/2016

SHEET
A3.12



NOTE:
DRAFT STOP EVERY SECTION OF LOWER TRUSS AT WING ENDS WITH SHEATHING

1
A3.12 WING 'C'



FOURTH FLOOR WING 'C' PLAN

SCALE: 1/8"=1'-0"

s:\projects\2015\11-20-15\4th floor wing 'c' plan.dwg
 8/28/2015 11:52 AM
 plm
 plm