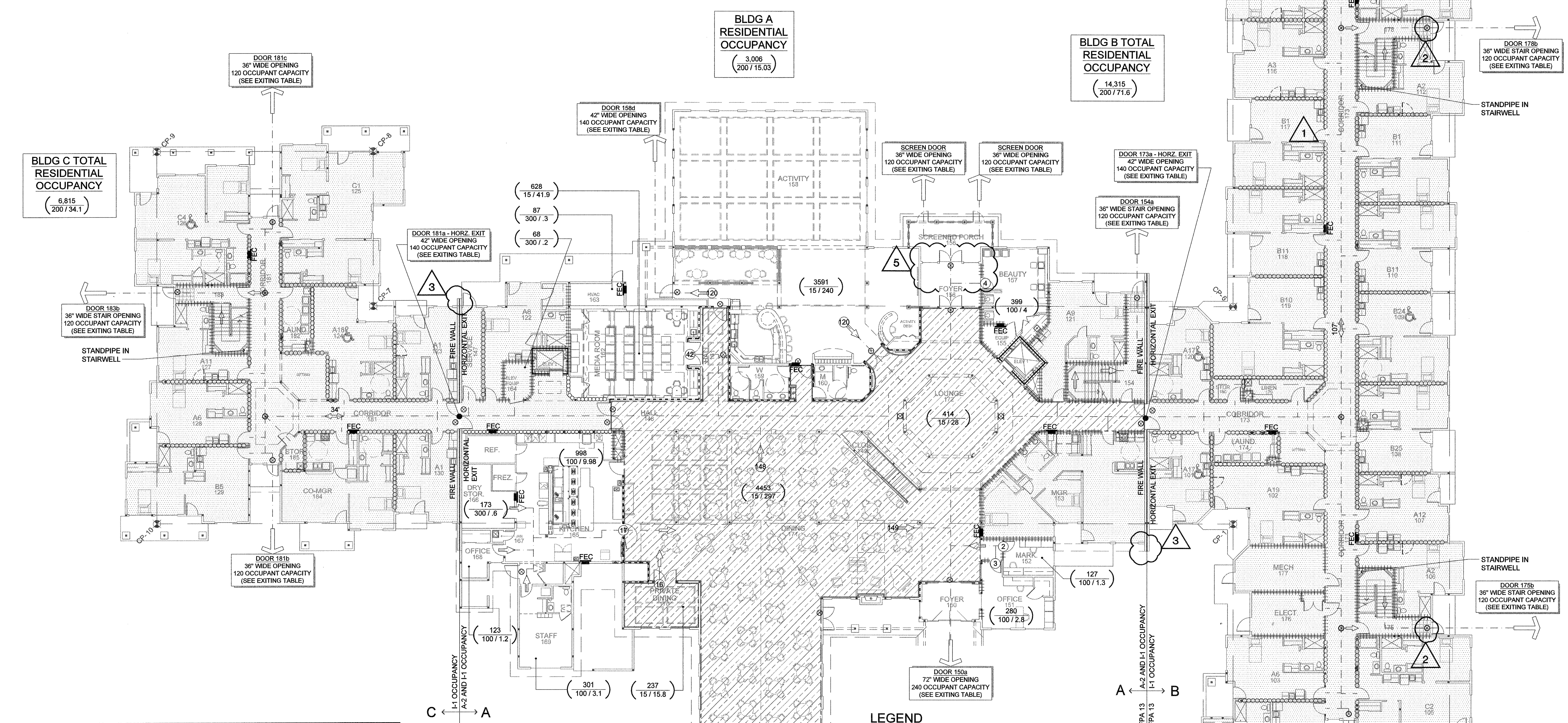


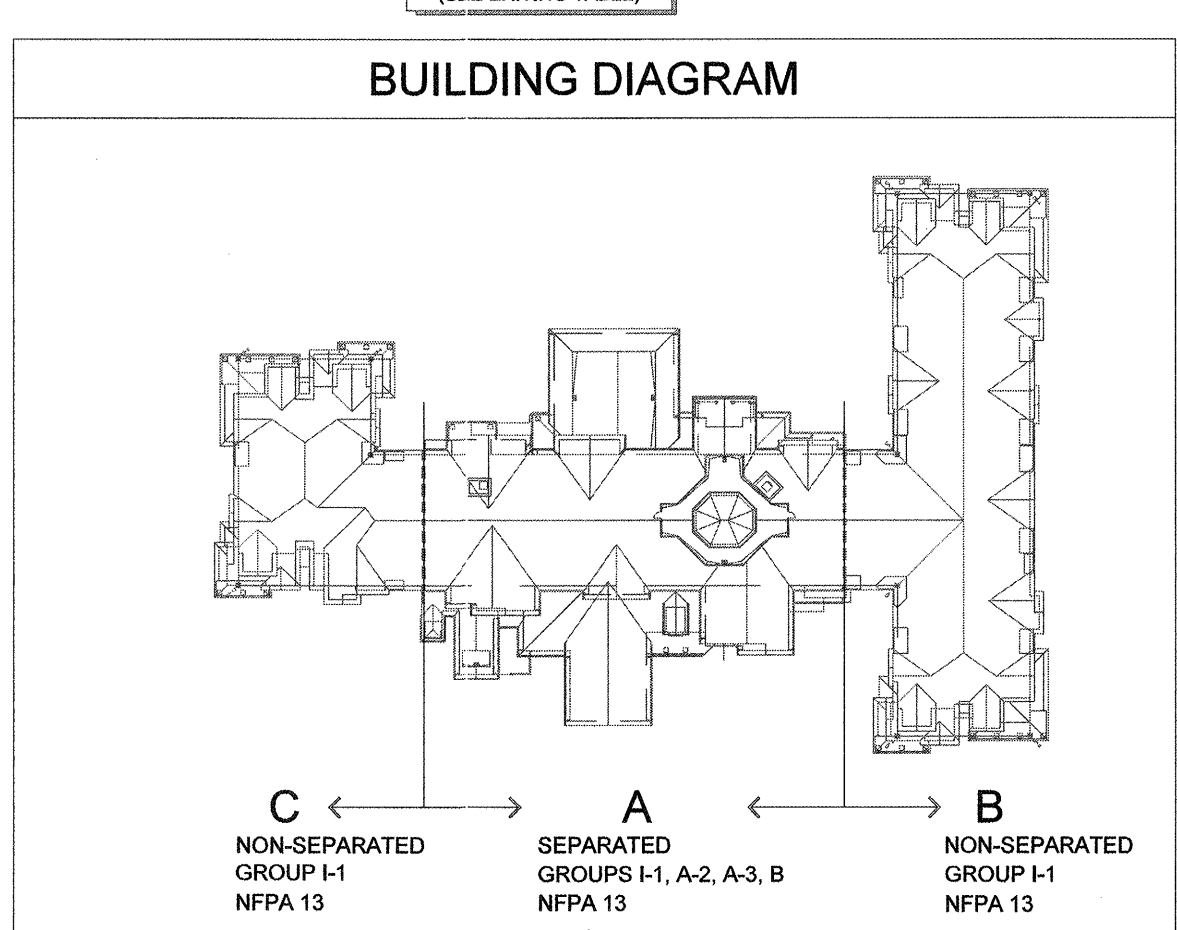
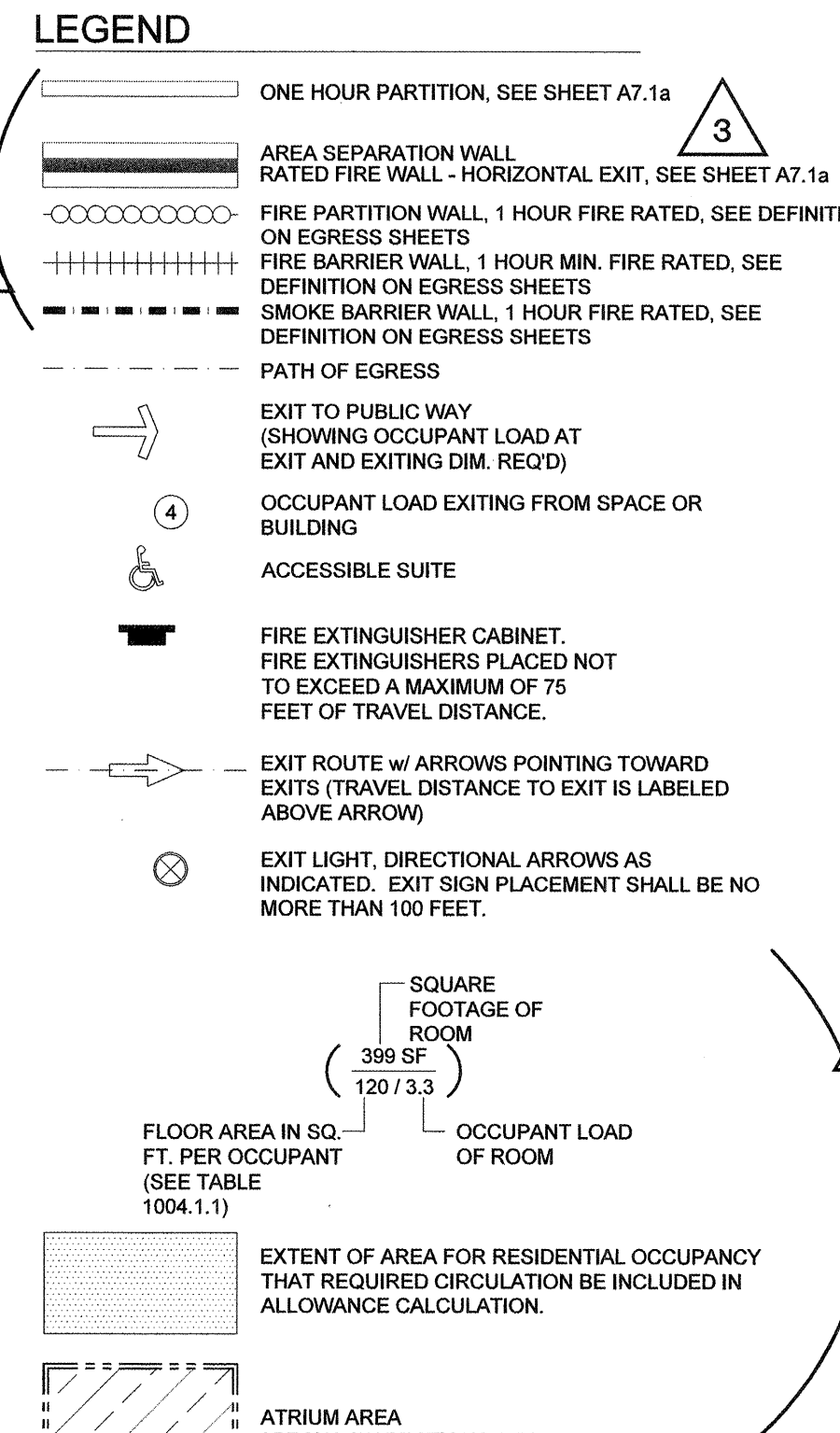
SEE SHEET A0.5 FOR FULL CODE SUMMARY

NOTE:
THIS IS AN I-1 OCCUPANCY FACILITY AND IS NOT REQUIRED TO BE LICENSED. STAFF DOES NOT PROVIDE RESIDENTS WITH ASSISTANCE WITH BATHING, OR MEDICATION DISPENSING.



EXITING TABLE - (BUILDING 'A')			
- EGRESS OCCUPANT LOADS PER TABLE 1004.1.1 -			
1ST FLOOR LOAD -			
TOTAL BUILDING 'A' 1ST FLOOR OCCUPANT LOAD	EGRESS WIDTH REQ. PER TABLE 1005.1	# OF EXITS REQ. PER TABLE 1019.1	
668	688 x .3 = 200.4"	3	
EXIT			
EGRESS WIDTH	MAX. OCC. LOAD CAPACITY		
EXIT DOOR 150a	72"	240	
EXIT DOOR 156 (SCREEN DOOR)	36"	120	
EXIT DOOR 156 (SCREEN DOOR)	36"	120	
EXIT DOOR 158a	42"	140	
HORIZONTAL EXIT DOOR 173a	42"	140	
HORIZONTAL EXIT DOOR 181a	42"	140	
TOTALS PROVIDED:	270"	900	
EXITING TABLE - (BUILDING 'B')			
- EGRESS OCCUPANT LOADS PER TABLE 1004.1.1 -			
1ST FLOOR LOAD -			
TOTAL BUILDING 'B' 1ST FLOOR OCCUPANT LOAD	EGRESS WIDTH REQ. PER TABLE 1005.1	# OF EXITS REQ. PER TABLE 1019.1	
72	72 x .3 = 21.6"	2	
EXIT			
EGRESS WIDTH	MAX. OCC. LOAD CAPACITY		
HORIZONTAL EXIT DOOR 173a	42"	140	
EXIT DOOR 173b	36"	120	
EXIT DOOR 173c	36"	120	
TOTALS PROVIDED:	114"	380	
EXITING TABLE - (BUILDING 'C')			
- EGRESS OCCUPANT LOADS PER TABLE 1004.1.1 -			
1ST FLOOR LOAD -			
TOTAL BUILDING 'C' 1ST FLOOR OCCUPANT LOAD	EGRESS WIDTH REQ. PER TABLE 1005.1	# OF EXITS REQ. PER TABLE 1019.1	
35	35 x .3 = 10.5"	2	
EXIT			
EGRESS WIDTH	MAX. OCC. LOAD CAPACITY		
HORIZONTAL EXIT DOOR 181a	42"	140	
EXIT DOOR 181b	36"	120	
EXIT DOOR 181c	36"	120	
TOTALS PROVIDED:	114"	380	

OCCUPANT LOAD CALCULATIONS PER TABLE 1004.1.1					
FIRST FLOOR					
Room Number	Room	SqFt	Floor Area Per Occupant	Occupant Load	Occupant Load
BLDG "A"					
149	Residential Area	3,006	200	15.03	16
150	Foyer	-	-	-	-
151	Office Room	280	100	2.80	3
152	Marketing	127	100	1.27	2
155	Elev Equip Room	52	300	0.17	1
156	Foyer	-	-	-	-
156	Screen Porch	-	-	-	-
157	Beauty	399	100	3.99	4
158	Activity	3,591	15	239.40	240
159	Womens Toilet	-	-	-	-
160	Mens Toilet	-	-	-	-
161	Hall	-	-	-	-
162	Media Room	628	15	41.87	42
163	HVAC Equip Room	87	300	0.29	1
164	Elev Equip Room	68	300	0.23	1
165	Kitchen	998	100	9.98	10
166	Dry Storage	173	300	0.58	1
167	Janitor Closet	-	-	-	-
168	Office Room	123	100	1.23	2
169	Staff Room	301	100	3.01	4
170	Private Dining	237	15	15.80	16
171	Dining Room	4,453	15	296.87	297
172	Lounge	414	15	27.60	28
BLDG "B"					
All Spaces					
		14,315	200	71.58	72
BLDG "C"					
All Spaces					
		6,815	200	34.08	35
				Building 'A' Total =	668
				Building 'B' Total =	72
				Building 'C' Total =	35
				Grand Total =	775



NOTES:

- AREA OCCUPANCY LAYOUT PER LOCAL CODE.
- PROVIDE AN OCCUPANT LOAD SIGN AT ALL ASSEMBLY AREAS AS PER LOCAL CODE.
- SIGNS WHICH DESIGNATE PERMANENT ROOMS AND SPACES SHALL COMPLY WITH ADAAG SECTIONS 4.1.3(16)(a) AND 4.30. SIGNS SHALL HAVE RAISED AND BRAILLED CHARACTERS AND PICTORIAL SYMBOL SIGNS, FINISH AND CONTRAST, AND MOUNTED AT 60 INCHES ABOVE THE FINISH FLOOR TO THE SIGN.
- NOT USED
- EACH AREA OF REFUGE SHALL BE SIZED TO ACCOMMODATE ONE WHEELCHAIR SPACE OF 30 INCHES BY 48 INCHES. IN AREAS OF REFUGE SHALL HAVE A TWO-WAY EMERGENCY COMMUNICATIONS SYSTEM, INSTRUCTIONS ON THE USE OF THE AREA UNDER EMERGENCY CONDITIONS AND SHALL BE POSTED ADJOINING THE COMMUNICATIONS SYSTEM. THE INSTRUCTIONS SHALL INCLUDE ALL OF THE FOLLOWING:
 - DIRECTIONS TO FIND OTHER MEANS OF EGRESS.
 - DIRECTIONS TO USE THE EXIT STAIRWAY DO SO AS SOON AS POSSIBLE UNLESS THEY ARE ASSISTING OTHERS.
 - INFORMATION ON PLANNED AVAILABILITY OF ASSISTANCE IN THE USE OF STAIRS AND HOW TO SUMMON SUCH ASSISTANCE.
 - DIRECTIONS FOR USE OF THE EMERGENCY COMMUNICATIONS SYSTEM.
 - AREAS OF REFUGE SHALL BE PROVIDED WITH A TWO-WAY COMMUNICATION SYSTEM BETWEEN THE AREA OF REFUGE AND A CENTRAL CONTROL POINT. IF THE CENTRAL CONTROL POINT IS NOT CONSTANTLY ATTENDED, THE AREA OF REFUGE SHALL ALSO HAVE CONTROLLED ACCESS TO A PUBLIC TELEPHONE SYSTEM. LOCATION OF THE CENTRAL CONTROL POINT SHALL BE APPROVED BY THE FIRE DEPARTMENT. THE TWO-WAY COMMUNICATION SYSTEM SHALL INCLUDE BOTH AUDIBLE AND VISIBLE SIGNALS.
- IDENTIFICATION AT EACH DOOR PROVIDING ACCESS TO AN AREA OF REFUGE FROM AN ADJACENT FLOOR AREA SHALL BE IDENTIFIED BY A SIGN COMPLYING WITH ICC A117.1. STATING: AREA OF REFUGE, AND INCLUDING THE INTERNATIONAL SYMBOL OF ACCESSIBILITY. WHERE EXIT SIGN ILLUMINATION IS REQUIRED BY SECTION 707.5 THE AREA OF REFUGE SIGN SHALL BE ILLUMINATED. ADDITIONALLY, TACTILE SIGNAGE COMPLYING WITH ICC A117.1 SHALL BE LOCATED AT EACH DOOR TO AN AREA OF REFUGE.
- 709.4 CONTINUITY. FIRE PARTITIONS SHALL EXTEND FROM THE TOP OF THE FOUNDATION OR FLOOR/CEILING ASSEMBLY BELOW TO THE UNDERSIDE OF THE FLOOR OR ROOF SHEATHING, SLAB OR DECK ABOVE OR TO THE FIRE-RESISTANT FLOOR/CEILING OR ROOF/CEILING ASSEMBLY ABOVE, AND SHALL BE SECURELY ATTACHED THERETO. IF THE PARTITIONS ARE NOT CONTINUOUS TO THE SHEATHING, DECK OR SLAB, AND WHERE CONSTRUCTED OF COMBUSTIBLE CONSTRUCTION, THE SPACE BETWEEN THE SHEATHING, DECK OR SLAB ABOVE SHALL BE FIRE BLOCKED OR DRAFTS TOPPED IN ACCORDANCE WITH SECTIONS 717.2 AND 717.3 AT THE PARTITION LINE. THE SUPPORTING CONSTRUCTION SHALL BE PROTECTED TO AFFORD THE REQUIRED FIRE RESISTANCE RATING OF THE WALL SUPPORTED EXCEPT FOR WALLS SEPARATING TENANT SPACES IN COVERED MALL BUILDINGS, WALLS SEPARATING DWELLING UNITS, WALLS SEPARATING SLEEPING UNITS AND CORRIDOR WALLS, IN BUILDINGS OF TYPE IIB, IIBB AND VB CONSTRUCTION.
 - WHERE THE CORRIDOR CEILING IS CONSTRUCTED AS REQUIRED FOR THE CORRIDOR WALLS, THE WALLS SHALL BE PERMITTED TO TERMINATE AT THE UPPER MEMBRANE OF SUCH CEILING ASSEMBLY.
- 707.5 CONTINUITY. FIRE BARRIERS SHALL EXTEND FROM THE TOP OF THE FOUNDATION OR FLOOR/CEILING ASSEMBLY BELOW TO THE UNDERSIDE OF THE FLOOR OR ROOF SHEATHING, SLAB OR DECK ABOVE AND SHALL BE SECURELY ATTACHED THERETO. SUCH FIRE BARRIERS SHALL BE CONTINUOUS THROUGH CONCEALED SPACES, SUCH AS THE SPACE ABOVE A SUSPENDED CEILING.
- 710.4 CONTINUITY. SMOKE BARRIERS SHALL FORM AN EFFECTIVE MEMBRANE CONTINUOUS FROM OUTSIDE WALL TO OUTSIDE WALL AND FROM THE TOP OF THE FOUNDATION OR FLOOR/CEILING ASSEMBLY BELOW TO THE UNDERSIDE OF THE FLOOR OR ROOF SHEATHING, DECK OR SLAB ABOVE, INCLUDING CONTINUITY THROUGH CONCEALED SPACES, SUCH AS THOSE FOUND ABOVE SUSPENDED CEILINGS, AND INTERSTITIAL STRUCTURAL AND MECHANICAL SPACES. THE SUPPORTING CONSTRUCTION SHALL BE PROTECTED TO AFFORD THE REQUIRED FIRE-RESISTANCE RATING OF THE WALL OR FLOOR SUPPORTED IN BUILDINGS OTHER THAN TYPE IIB, IIBB OR VB CONSTRUCTION.

EXCEPTIONS:

 - SMOKE-BARRIER WALLS ARE NOT REQUIRED IN INTERSTITIAL SPACES WHERE SUCH SPACES ARE DESIGNED AND CONSTRUCTED WITH CEILINGS THAT PROVIDE RESISTANCE TO THE PASSAGE OF FIRE AND SMOKE EQUIVALENT TO THAT PROVIDED BY THE SMOKE-BARRIER WALLS.
- 708.1 FIREWALL. EACH PORTION OF A BUILDING SEPARATED BY ONE OR MORE FIRE WALLS THAT COMPLY WITH THE PROVISIONS OF THIS SECTION SHALL BE CONSIDERED A SEPARATE BUILDING. THE EXTENT AND LOCATION OF SUCH FIRE WALLS SHALL PROVIDE A COMPLETE SEPARATION.
 - 708.2 STRUCTURAL STABILITY. FIRE WALLS SHALL HAVE SUFFICIENT STRUCTURAL STABILITY UNDER FIRE CONDITIONS TO ALLOW COLLAPSE OF CONSTRUCTION ON EITHER SIDE WITHOUT COLLAPSE OF THE WALL FOR THE DURATION OF TIME INDICATED BY THE REQUIRED FIRE-RESISTANCE RATING.
 - 708.3 MATERIALS. FIRE WALLS SHALL BE OF ANY APPROVED NONCOMBUSTIBLE MATERIALS.

EXCEPTION:

 BUILDINGS OF TYPE V CONSTRUCTION.
 - 708.4 FIRE-RESISTANCE RATING. FIRE WALLS SHALL HAVE A FIRE-RESISTANCE RATING OF NOT LESS THAN THAT REQUIRED BY TABLE 706.4, TABLE 706.5, TABLE 706.6, TABLE 706.7, TABLE 706.8, TABLE 706.9, TABLE 706.10, TABLE 706.11, TABLE 706.12, TABLE 706.13, TABLE 706.14, TABLE 706.15, TABLE 706.16, TABLE 706.17, TABLE 706.18, TABLE 706.19, TABLE 706.20, TABLE 706.21, TABLE 706.22, TABLE 706.23, TABLE 706.24, TABLE 706.25, TABLE 706.26, TABLE 706.27, TABLE 706.28, TABLE 706.29, TABLE 706.30, TABLE 706.31, TABLE 706.32, TABLE 706.33, TABLE 706.34, TABLE 706.35, TABLE 706.36, TABLE 706.37, TABLE 706.38, TABLE 706.39, TABLE 706.40, TABLE 706.41, TABLE 706.42, TABLE 706.43, TABLE 706.44, TABLE 706.45, TABLE 706.46, TABLE 706.47, TABLE 706.48, TABLE 706.49, TABLE 706.50, TABLE 706.51, TABLE 706.52, TABLE 706.53, TABLE 706.54, TABLE 706.55, TABLE 706.56, TABLE 706.57, TABLE 706.58, TABLE 706.59, TABLE 706.60, TABLE 706.61, TABLE 706.62, TABLE 706.63, TABLE 706.64, TABLE 706.65, TABLE 706.66, TABLE 706.67, TABLE 706.68, TABLE 706.69, TABLE 706.70, TABLE 706.71, TABLE 706.72, TABLE 706.73, TABLE 706.74, TABLE 706.75, TABLE 706.76, TABLE 706.77, TABLE 706.78, TABLE 706.79, TABLE 706.80, TABLE 706.81, TABLE 706.82, TABLE 706.83, TABLE 706.84, TABLE 706.85, TABLE 706.86, TABLE 706.87, TABLE 706.88, TABLE 706.89, TABLE 706.90, TABLE 706.91, TABLE 706.92, TABLE 706.93, TABLE 706.94, TABLE 706.95, TABLE 706.96, TABLE 706.97, TABLE 706.98, TABLE 706.99, TABLE 706.100, TABLE 706.101, TABLE 706.102, TABLE 706.103, TABLE 706.104, TABLE 706.105, TABLE 706.106, TABLE 706.107, TABLE 706.108, TABLE 706.109, TABLE 706.110, TABLE 706.111, TABLE 706.112, TABLE 706.113, TABLE 706.114, TABLE 706.115, TABLE 706.116, TABLE 706.117, TABLE 706.118, TABLE 706.119, TABLE 706.120, TABLE 706.121, TABLE 706.122, TABLE 706.123, TABLE 706.124, TABLE 706.125, TABLE 706.126, TABLE 706.127, TABLE 706.128, TABLE 706.129, TABLE 706.130, TABLE 706.131, TABLE 706.132, TABLE 706.133, TABLE 706.134, TABLE 706.135, TABLE 706.136, TABLE 706.137, TABLE 706.138, TABLE 706.139, TABLE 706.140, TABLE 706.141, TABLE 706.142, TABLE 706.143, TABLE 706.144, TABLE 706.145, TABLE 706.146, TABLE 706.147, TABLE 706.148, TABLE 706.149, TABLE 706.150, TABLE 706.151, TABLE 706.152, TABLE 706.153, TABLE 706.154, TABLE 706.155, TABLE 706.156, TABLE 706.157, TABLE 706.158, TABLE 706.159, TABLE 706.160, TABLE 706.161, TABLE 706.162, TABLE 706.163, TABLE 706.164, TABLE 706.165, TABLE 706.166, TABLE 706.167, TABLE 706.168, TABLE 706.169, TABLE 706.170, TABLE 706.171, TABLE 706.172, TABLE 706.173, TABLE 706.174, TABLE 706.175, TABLE 706.176, TABLE 706.177, TABLE 706.178, TABLE 706.179, TABLE 706.180, TABLE 706.181, TABLE 706.182, TABLE 706.183, TABLE 706.184, TABLE 706.185, TABLE 706.186, TABLE 706.187, TABLE 706.188, TABLE 706.189, TABLE 706.190, TABLE 706.191, TABLE 706.192, TABLE 706.193, TABLE 706.194, TABLE 706.195, TABLE 706.196, TABLE 706.197, TABLE 706.198, TABLE 706.199, TABLE 706.200, TABLE 706.201, TABLE 706.202, TABLE 706.203, TABLE 706.204, TABLE 706.205, TABLE 706.206, TABLE 706.207, TABLE 706.208, TABLE 706.209, TABLE 706.210, TABLE 706.211, TABLE 706.212, TABLE 706.213, TABLE 706.214, TABLE 706.215, TABLE 706.216, TABLE 706.217, TABLE 706.218, TABLE 706.219, TABLE 706.220, TABLE 706.221, TABLE 706.222, TABLE 706.223, TABLE 706.224, TABLE 706.225, TABLE 706.226, TABLE 706.227, TABLE 706.228, TABLE 706.229, TABLE 706.230, TABLE 706.231, TABLE 706.232, TABLE 706.233, TABLE 706.234, TABLE 706.235, TABLE 706.236, TABLE 706.237, TABLE 706.238, TABLE 706.239, TABLE 706.240, TABLE 706.241, TABLE 706.242, TABLE 706.243, TABLE 706.244, TABLE 706.245, TABLE 706.246, TABLE 706.247, TABLE 706.248, TABLE 706.249, TABLE 706.250, TABLE 706.251, TABLE 706.252, TABLE 706.253, TABLE 706.254, TABLE 706.255, TABLE 706.256, TABLE 706.257, TABLE 706.258, TABLE 706.259, TABLE 706.260, TABLE 706.261, TABLE 706.262, TABLE 706.263, TABLE 706.264, TABLE 706.265, TABLE 706.266, TABLE 706.267, TABLE 706.268, TABLE 706.269, TABLE 706.270, TABLE 706.271, TABLE 706.272, TABLE 706.273, TABLE 706.274, TABLE 706.275, TABLE 706.276, TABLE 706.277, TABLE 706.278, TABLE 706.279, TABLE 706.280, TABLE 706.281, TABLE 706.282, TABLE 706.283, TABLE 706.284, TABLE 706.285, TABLE 706.286, TABLE 706.287, TABLE 706.288, TABLE 706.289, TABLE 706.290, TABLE 706.291, TABLE 706.292, TABLE 706.293, TABLE 706.294, TABLE 706.295, TABLE 706.296, TABLE 706.297, TABLE 706.298, TABLE 706.299, TABLE 706.300, TABLE 706.301, TABLE 706.302, TABLE 706.303, TABLE 706.304, TABLE 706.305, TABLE 706.306, TABLE 706.307, TABLE 706.308, TABLE 706.309, TABLE 706.310, TABLE 706.311, TABLE 706.312, TABLE 706.313, TABLE 706.314, TABLE 706.315, TABLE 706.316, TABLE 706.317, TABLE 706.318, TABLE 706.319, TABLE 706.320, TABLE 706.321, TABLE 706.322, TABLE 706.323, TABLE 706.324, TABLE 706.325, TABLE 706.326, TABLE 706.327, TABLE 706.328, TABLE 706.329, TABLE 706.330, TABLE 706.331, TABLE 706.332, TABLE 706.333, TABLE 706.334, TABLE 706.335, TABLE 706.336, TABLE 706.337, TABLE 706.338, TABLE 706.339, TABLE 706.340, TABLE 706.341, TABLE 706.342, TABLE 706.343, TABLE 706.344, TABLE 706.345, TABLE 706.346, TABLE 706.347, TABLE 706.348, TABLE 706.349, TABLE 706.350, TABLE 706.351, TABLE 706.352, TABLE 706.353, TABLE 706.354, TABLE 706.355, TABLE 706.356, TABLE 706.357, TABLE 706.358, TABLE 706.359, TABLE 706.360, TABLE 706.361, TABLE 706.362, TABLE 706.363, TABLE 706.364, TABLE 706.365, TABLE 706.366, TABLE 706.367, TABLE 706.368, TABLE 706.369, TABLE 706.370, TABLE 706.371, TABLE 706.372, TABLE 706.373, TABLE 706.374, TABLE 706.375, TABLE 706.376, TABLE 706.377, TABLE 706.378, TABLE 706.379, TABLE 706.380, TABLE 706.381, TABLE 706.382, TABLE 706.383, TABLE 706.384, TABLE 706.385, TABLE 706.386, TABLE 706.387, TABLE 706.388, TABLE 706.389, TABLE 706.390, TABLE 706.391, TABLE 706.392, TABLE 706.393, TABLE 706.394, TABLE 706.395, TABLE 706.396, TABLE 706.397, TABLE 706.398, TABLE 706.399, TABLE 706.400, TABLE 706.401, TABLE 706.402, TABLE 706.403, TABLE 706.404, TABLE 706.405, TABLE 706.406, TABLE 706.407, TABLE 706.408, TABLE 706.409, TABLE 706.410, TABLE 706.411, TABLE 706.412, TABLE 706.413, TABLE 706.414, TABLE 706.415, TABLE 706.416, TABLE 706.417, TABLE 706.418, TABLE 706.419, TABLE 706.420, TABLE 706.421, TABLE 706.422, TABLE 706.423, TABLE 706.424, TABLE 706.425, TABLE 706.426, TABLE 706.427, TABLE 706.428, TABLE 706.429, TABLE 706.430, TABLE 706.431, TABLE 706.432, TABLE 706.433, TABLE 706.434, TABLE 706.435, TABLE 706.436, TABLE 706.437, TABLE 706.438, TABLE 706.439, TABLE 706.440, TABLE 706.441, TABLE 706.442, TABLE 706.443, TABLE 706.444, TABLE 706.445, TABLE 706.446, TABLE 706.447, TABLE 706.448, TABLE 706.449, TABLE 706.450, TABLE 706.451, TABLE 706.452, TABLE 706.453, TABLE 706.454, TABLE 706.455, TABLE 706.456, TABLE 706.457, TABLE 706.458, TABLE 706.459, TABLE 706.460, TABLE 706.461, TABLE 706.462, TABLE 706.463, TABLE 706.464, TABLE 706.465, TABLE 706.466, TABLE 706.467, TABLE 706.468, TABLE 706.469, TABLE 706.470, TABLE 706.471, TABLE 706.472, TABLE 706.473, TABLE 706.474, TABLE 706.475, TABLE 706.476, TABLE 706.477, TABLE 706.478, TABLE 706.479, TABLE 706.480, TABLE 706.481, TABLE 706.482, TABLE 706.483, TABLE 706.484, TABLE 706.485, TABLE 706.486, TABLE 706.487, TABLE 706.488, TABLE 706.489, TABLE 706.490, TABLE 706.491, TABLE 706.492, TABLE 706.493, TABLE 706.494, TABLE 706.495, TABLE 706.496, TABLE 706.497, TABLE 706.498, TABLE 706.499, TABLE 706.500, TABLE 706.501, TABLE 706.502, TABLE 706.503, TABLE 706.504, TABLE 706.505, TABLE 706.506, TABLE 706.507, TABLE 706.508, TABLE 706.509, TABLE 706.510, TABLE 706.511, TABLE 706.512, TABLE 706.513, TABLE 706.514, TABLE 706.515, TABLE 706.516, TABLE 706.517, TABLE 706.518, TABLE 706.519, TABLE 706.520, TABLE 706.521, TABLE 706.522, TABLE 706.523, TABLE 706.524, TABLE 706.525, TABLE 706.526, TABLE 706.527, TABLE 706.528, TABLE 706.529, TABLE 706.530, TABLE 706.531, TABLE 706.532, TABLE 706.533, TABLE 706.534, TABLE 706.535, TABLE 706.536, TABLE 706.537, TABLE 706.538, TABLE 706.539, TABLE 706.540, TABLE 706.541, TABLE 706.542, TABLE 706.543, TABLE 706.544, TABLE 706.545, TABLE 706.546, TABLE 706.547, TABLE 706.548, TABLE 706.549, TABLE 706.550, TABLE 706.551, TABLE 706.552, TABLE 706.553, TABLE 706.554, TABLE 706.555, TABLE 706.556, TABLE 706.557, TABLE 706.558, TABLE 706.559, TABLE 706.560, TABLE 706.561, TABLE 706.562, TABLE 706.563, TABLE 706.564, TABLE 706.565, TABLE 706.566, TABLE 706.567, TABLE 706.568, TABLE 706.569, TABLE 706.570, TABLE 706.571, TABLE 706.572, TABLE 706.573, TABLE 706.574, TABLE 706.575, TABLE 706.576, TABLE 706.577, TABLE 706.578, TABLE 706.579, TABLE 706.580, TABLE 706.581, TABLE 706.582, TABLE 706.583, TABLE 706.584, TABLE 706.585, TABLE 706.586, TABLE 706.587, TABLE 706.588, TABLE 706.589, TABLE 706.590, TABLE 706.591, TABLE 706.592, TABLE 706.593, TABLE 706.594, TABLE 706.595, TABLE 706.596, TABLE 706.597, TABLE 706.598, TABLE 706.599, TABLE 706.600, TABLE 706.601, TABLE 706.602, TABLE 706.603, TABLE 706.604, TABLE 706.605, TABLE 706.606, TABLE 706.607, TABLE 706.608, TABLE 706.609, TABLE 706.610, TABLE 706.611, TABLE 706.612, TABLE 706.613, TABLE 706.614, TABLE 706.615, TABLE 706.616, TABLE 706.617, TABLE 706.618, TABLE 706.619, TABLE 706.620, TABLE 706.621, TABLE 706.622, TABLE 706.623, TABLE 706.624, TABLE 706.625, TABLE 706.626, TABLE 706.627, TABLE 706.628, TABLE 706.629, TABLE 706.630, TABLE 706.631, TABLE 706.632, TABLE 706.633, TABLE 706.634, TABLE 706.635, TABLE 706.636, TABLE 706.637, TABLE 706.638, TABLE 706.639, TABLE 706.640, TABLE 706.641, TABLE 706.642, TABLE 706.643, TABLE 706.644, TABLE 706.645, TABLE 706.646, TABLE 706.647, TABLE 706.648, TABLE 706.649, TABLE 706.650, TABLE 706.651, TABLE 706.652, TABLE 706.653, TABLE 706.654, TABLE 706.655, TABLE 706.656, TABLE 706.657, TABLE 706.658, TABLE 706.659, TABLE 706.660, TABLE 706.661, TABLE 706.662, TABLE 706.663, TABLE 706.664, TABLE 706.665, TABLE 706.666, TABLE 706.667, TABLE 706.668, TABLE 706.669, TABLE 706.670, TABLE 706.671, TABLE 706.672, TABLE 706.673, TABLE 706.674, TABLE 706.675, TABLE 706.676, TABLE 706.677, TABLE 706.678, TABLE 706.679, TABLE 706.680, TABLE 706.681, TABLE 706.682, TABLE 706.683, TABLE 706.684, TABLE 706.685, TABLE 706.686, TABLE 706.687, TABLE 706.688, TABLE 706.689, TABLE 706.690, TABLE 706.691, TABLE 706.692, TABLE 706.693, TABLE 706.694, TABLE 706.695, TABLE 706.696, TABLE 706.697, TABLE 706.698, TABLE 706.699, TABLE 706.700, TABLE 706.701, TABLE 706.702, TABLE 706.703, TABLE 706.704, TABLE 706.705, TABLE 706.706, TABLE 706.707, TABLE 706.708, TABLE 706.709, TABLE 706.710, TABLE 706.711, TABLE 706.712, TABLE 706.713, TABLE 706.714, TABLE 706.715, TABLE 706.716, TABLE 706.717, TABLE 706.718, TABLE 706.719, TABLE 706.720, TABLE 706.721, TABLE 706.722, TABLE 706.723, TABLE 706.724, TABLE 706.725, TABLE 706.726, TABLE 706.727, TABLE 706.728, TABLE 706.729, TABLE 706.730, TABLE 706.731, TABLE 706.732, TABLE 706.733, TABLE 706.734