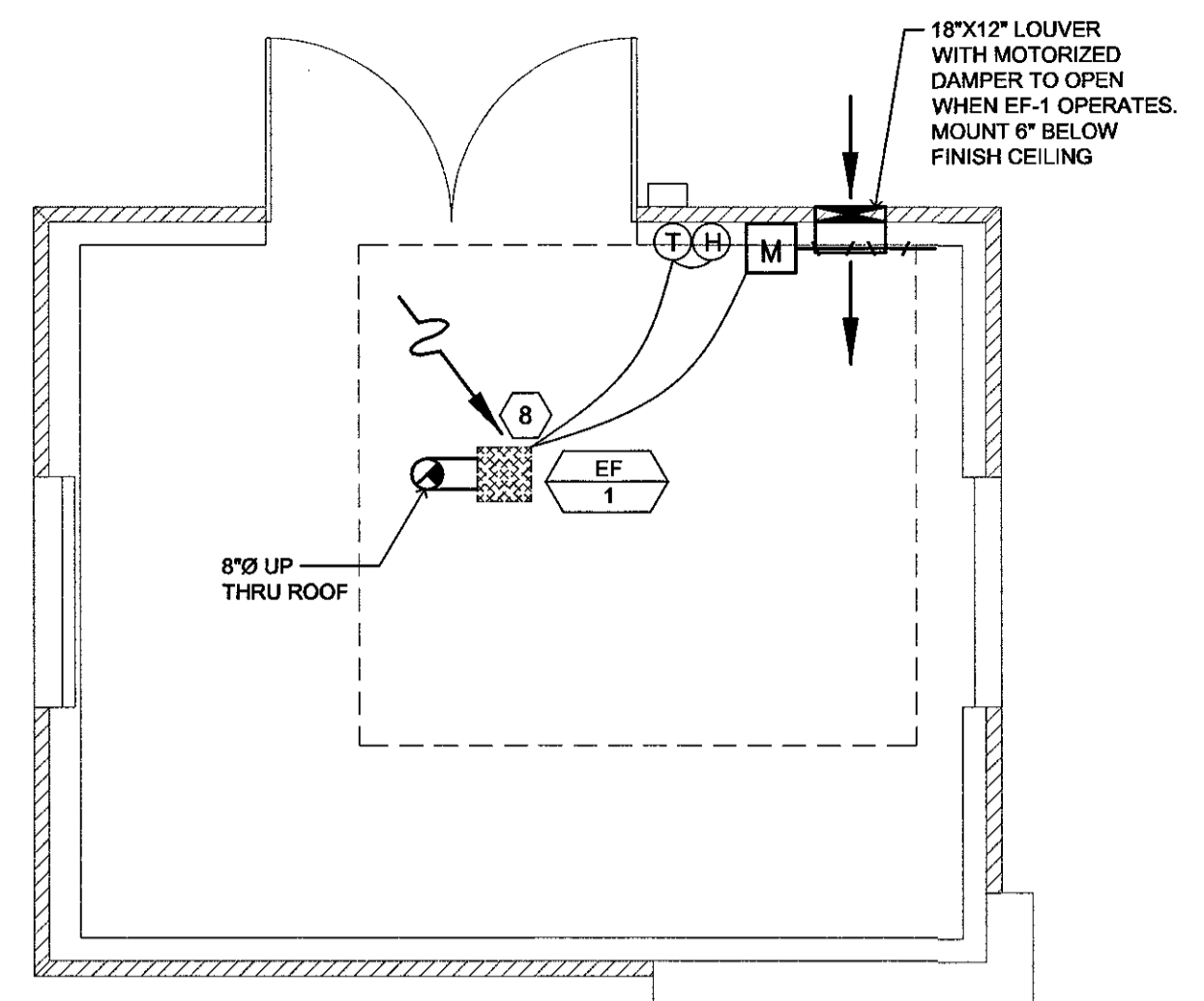
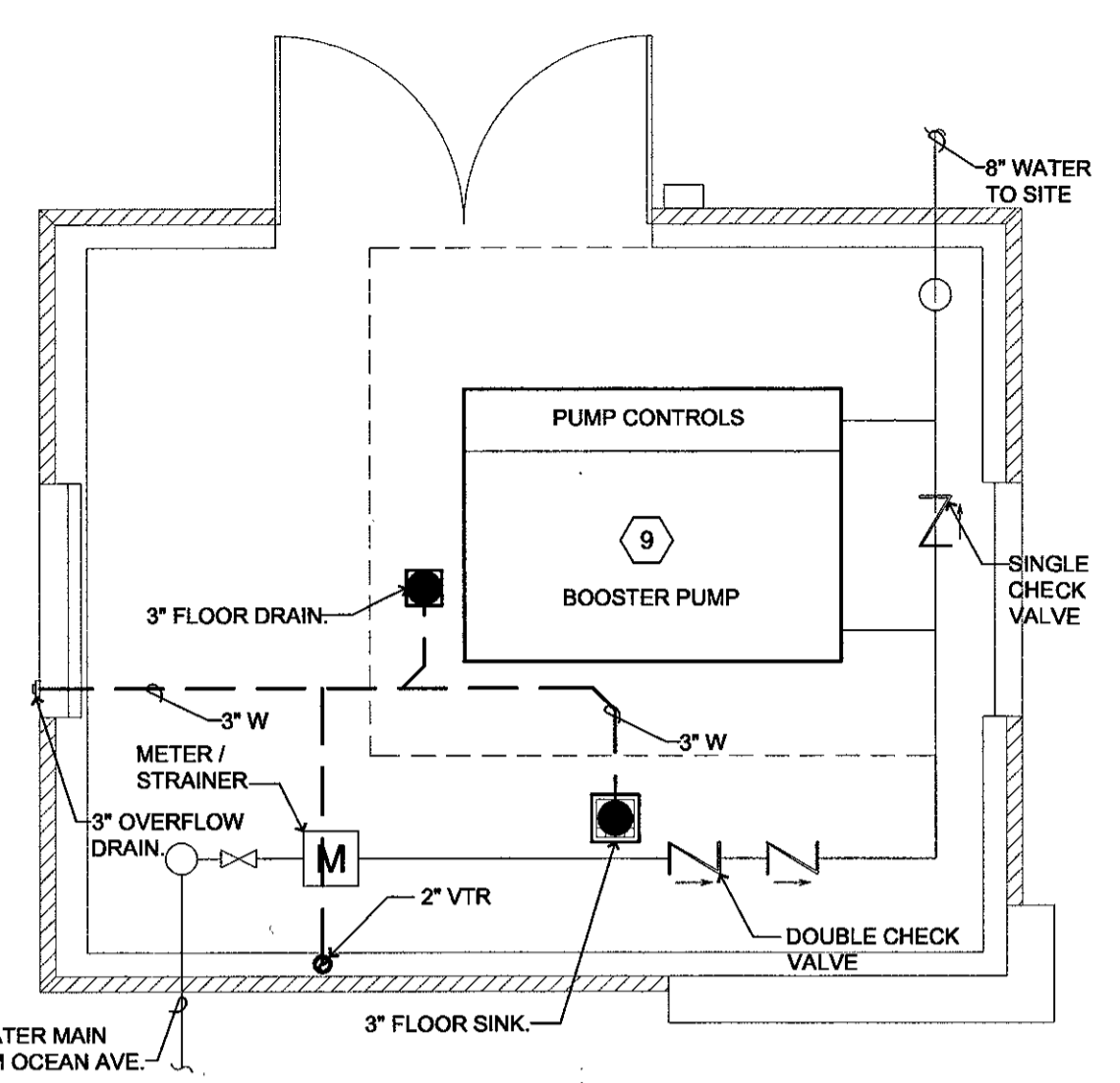


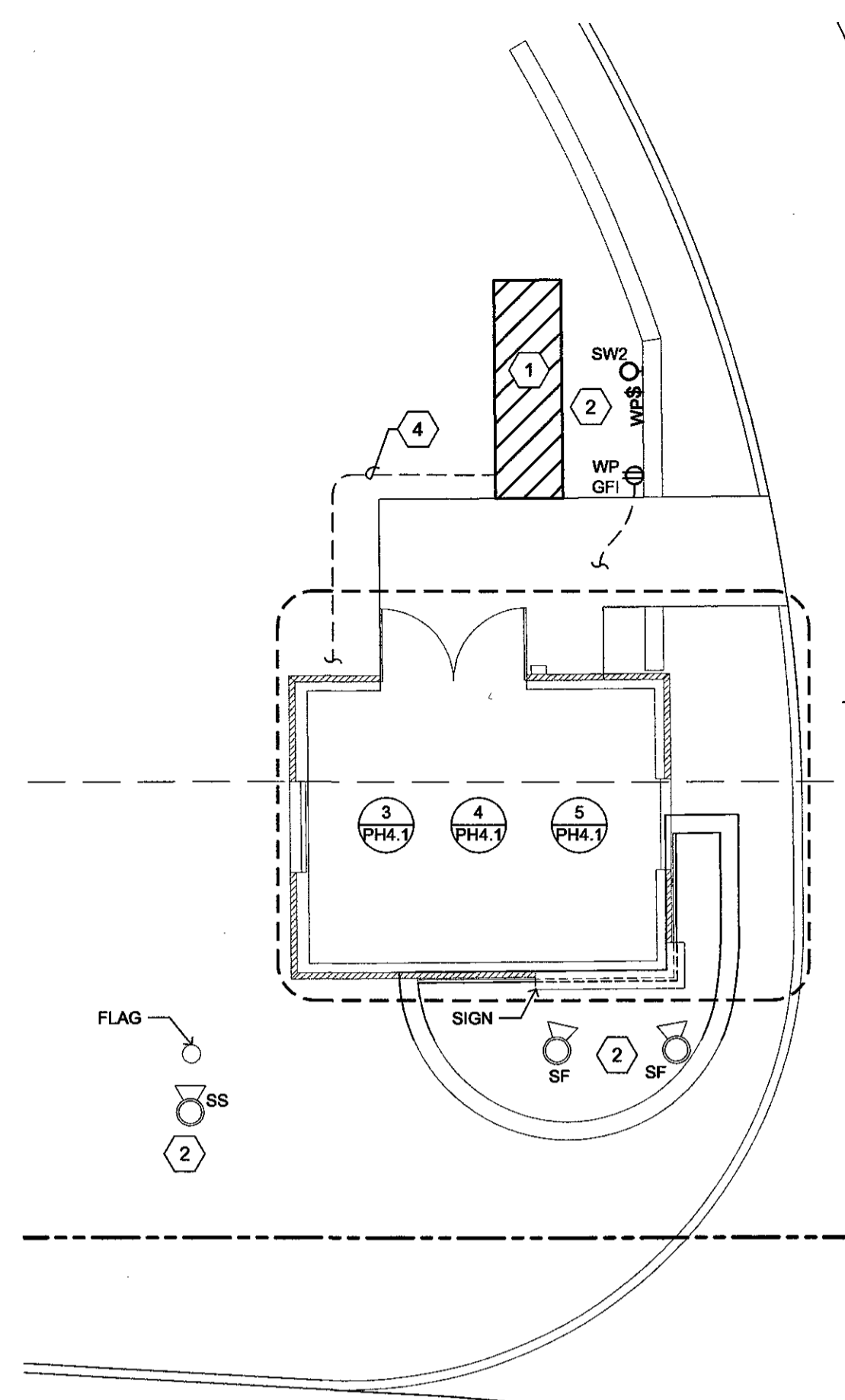
**3 ENLARGED ELECTRICAL PUMP HOUSE PLAN**  
PH4.1 SCALE: 1/4" = 1'



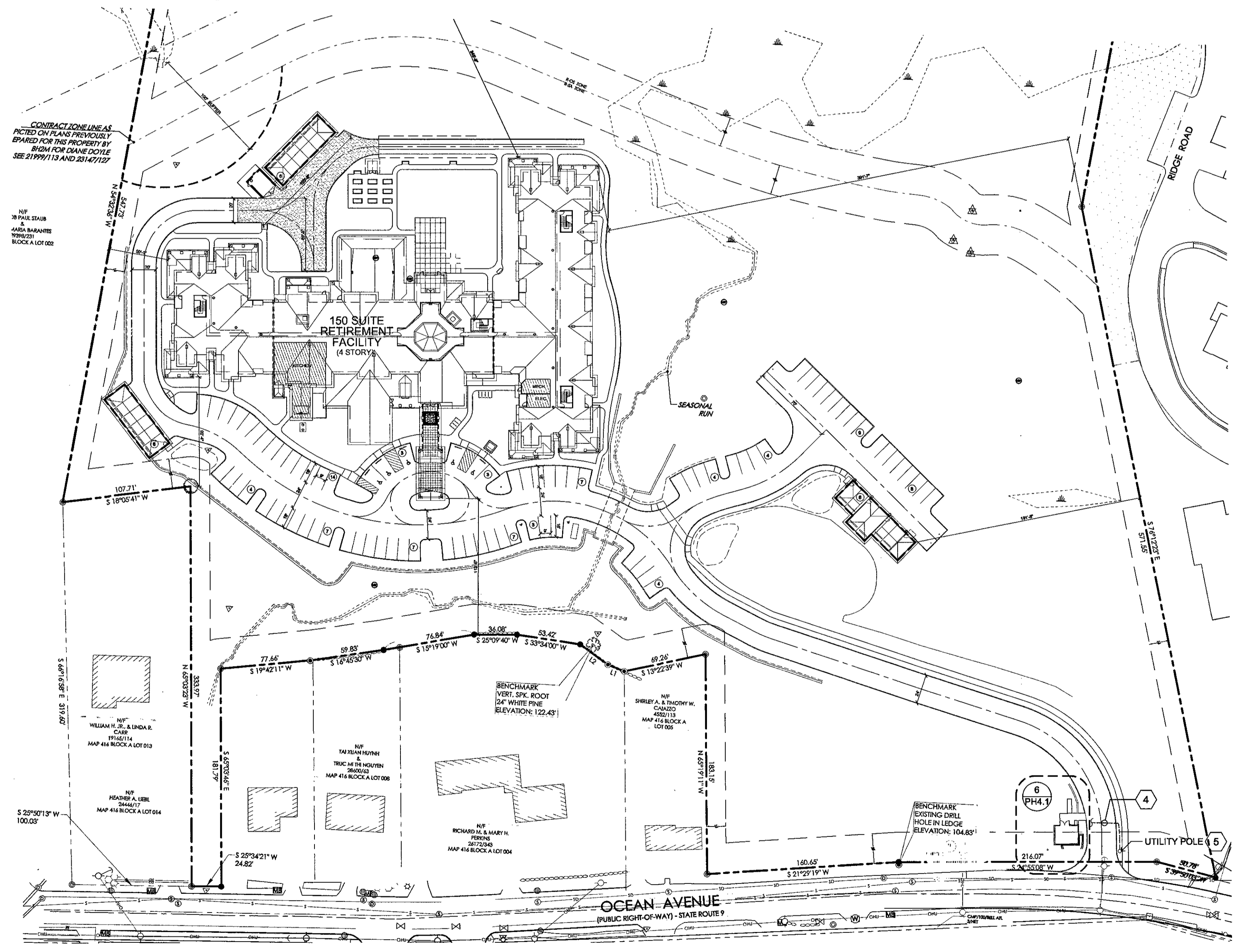
**4 ENLARGED MECHANICAL PUMP HOUSE PLAN**  
PH4.1 SCALE: 1/4" = 1'



**5 ENLARGED PLUMBING PUMP HOUSE PLAN**  
PH4.1 SCALE: 1/4" = 1'



**6 ENLARGED MEP - PUMP HOUSE PLAN**  
PH4.1 SCALE: 1/8" = 1'



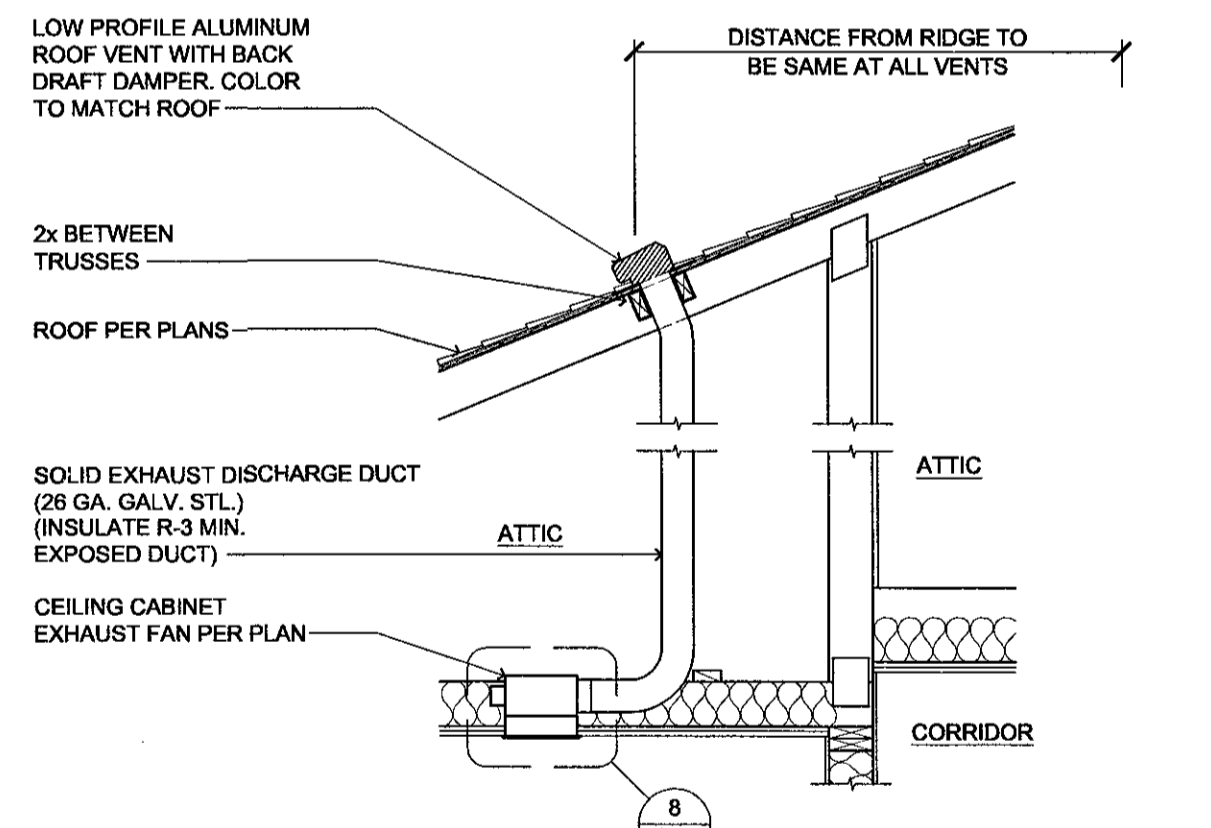
**1 MECHANICAL, ELECTRICAL, AND PLUMBING - SITE PLAN**  
PH4.1 SCALE: 1" = 32'

**MEP KEY NOTES:**

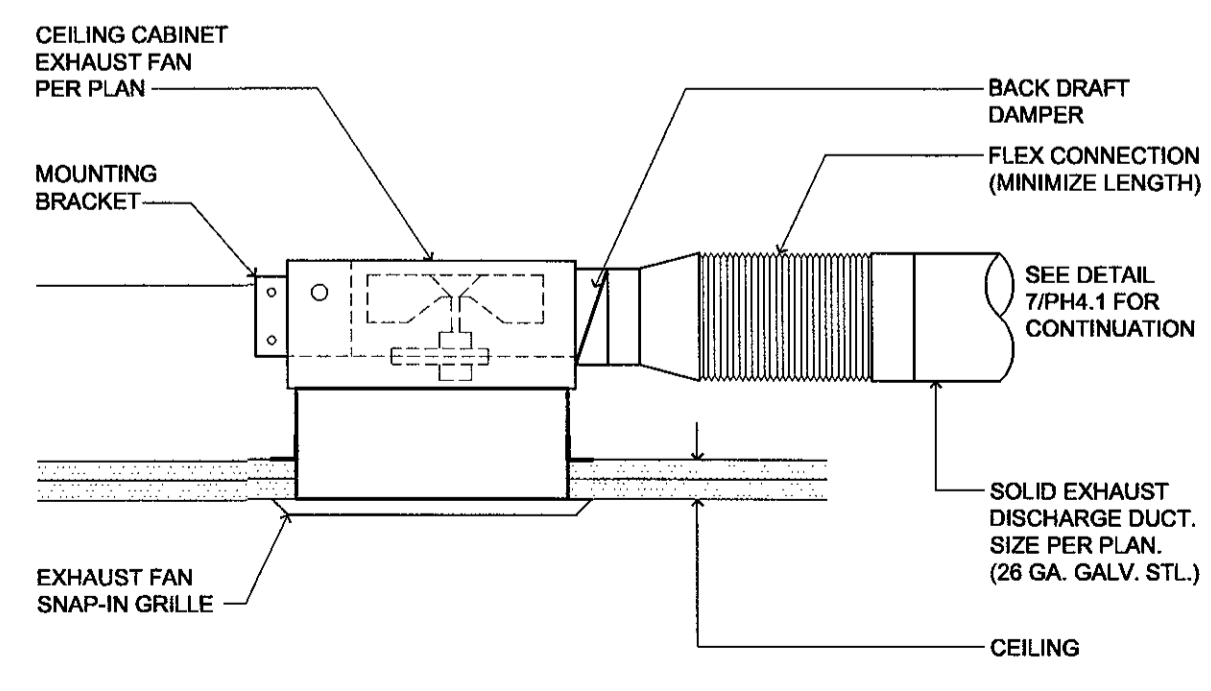
- EMERGENCY STANDBY ENGINE GENERATOR. SEE SPECIFICATIONS ON PH4.2, AND ONE-LINE DIAGRAM 1/PH4.2
- CIRCUIT LIGHTING PER LIGHTING WIRING DIAGRAM. SEE DETAIL 2/PH4.2
- COORDINATE WITH STRUCTURAL FOR ROUTING OF RACEWAY WHEN ROUTED UNDER BUILDING.
- SEE ONE-LINE DIAGRAM 1/PH4.2 FOR WIRE AND CONDUIT SIZE.
- POLE MOUNTED UTILITY TRANSFORMER. 120/208 VOLT, 3 PHASE. COORDINATE WITH UTILITY.
- UNDERGROUND PRIMARY SERVICE. COORDINATE SERVICE AND PAY ALL CHARGES AS REQUIRED BY SERVING UTILITY. PROVIDE CONDUIT AND RACEWAY FROM TRANSFORMER TO UTILITY SERVICE VAULT AS REQUIRED BY SERVING UTILITY. INSTALL RACEWAY A MINIMUM OF 36" BELOW GRADE. COORDINATE EXACT ROUTING, CONDUIT SIZE AND QUANTITY, INSTALLATION REQUIREMENTS, AND TERMINATION POINT WITH UTILITY.
- SKW UNIT HEATER 208V/3PH WITH TWO STAGE INTERNAL THERMOSTAT. QMARK MUH0581-UHM12
- CEILING MOUNTED EXHAUST FAN - 100 CFM @ 0.1" TSP, WITH BACK DRAFT DAMPER. CONTROL THERMOSTAT SET TO 75-DEGREE F. HUMIDISTAT SET TO 60% RELATIVE HUMIDITY
- AQUA FORCE XL VARIABLE SPEED BOOSTING PACKAGE PUMP SYSTEM. 4 PUMPS EACH RATED @ 475 GPM, - 25 HP, 208 VOLT, 3 PHASE. TOTAL PACKAGE FLOW - 1900 GPM @ 55 PSI BOOST.

**ELECTRICAL GENERAL NOTES:**

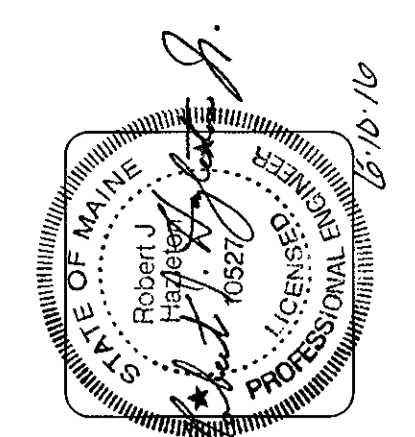
- OUTSIDE THE BUILDING AND BELOW GRADE, WIRING MAY BE IN SCHEDULE-40 PVC CONDUIT WITH GROUNDING CONDUCTOR IF ACCEPTABLE BY LOCAL CODES. NOT LESS THAN 3/4" CONDUIT.
- INSTALL EXTERIOR CIRCUITS UNDERGROUND. DIRECT BURIED BRANCH CIRCUIT WIRING OUTSIDE THE BUILDING AND BELOW GRADE MAY BE IN TYPE UF MOISTURE RESISTANT CABLE, NOT LESS THAN 10AWG CONDUCTORS OR AS NOTED. COMPLY WITH ELECTRICAL CODE AS REQUIRED AND NOTED ON COVER.



**7 CEILING EXHAUST FAN TERMINATION (AT ATTIC SPACE)**  
SCALE: N.T.S.



**8 CEILING EXHAUST FAN**  
SCALE: N.T.S.



**lenity architecture**  
3150 Kettle Court, SE, Salem, Oregon 97302  
PHONE (503) 399-0580

**COLSON AND COLSON**  
GENERAL CONTRACTOR, INC.  
2280 MACGILL CHRIST STREET, SUITE 200  
SALEM, OREGON, 97302  
PHONE (503) 586-7401

**PORTLAND**  
RETIREMENT RESIDENCE  
802 OCEAN AVE., PORTLAND, MAINE 04103

**PUMP HOUSE PLNS**  
**AND SITE PLAN**  
**- MECH, ELEC, PLMB**

DATE: 5/27/2016  
REVISED DATE:  
SHEET  
PH4.1

www.1000DTH.com 8:30 AM (local) 5/27/2016 11:27 AM (local) R:\projects\portland\pump house\ph4.1\ph4.1.mxd