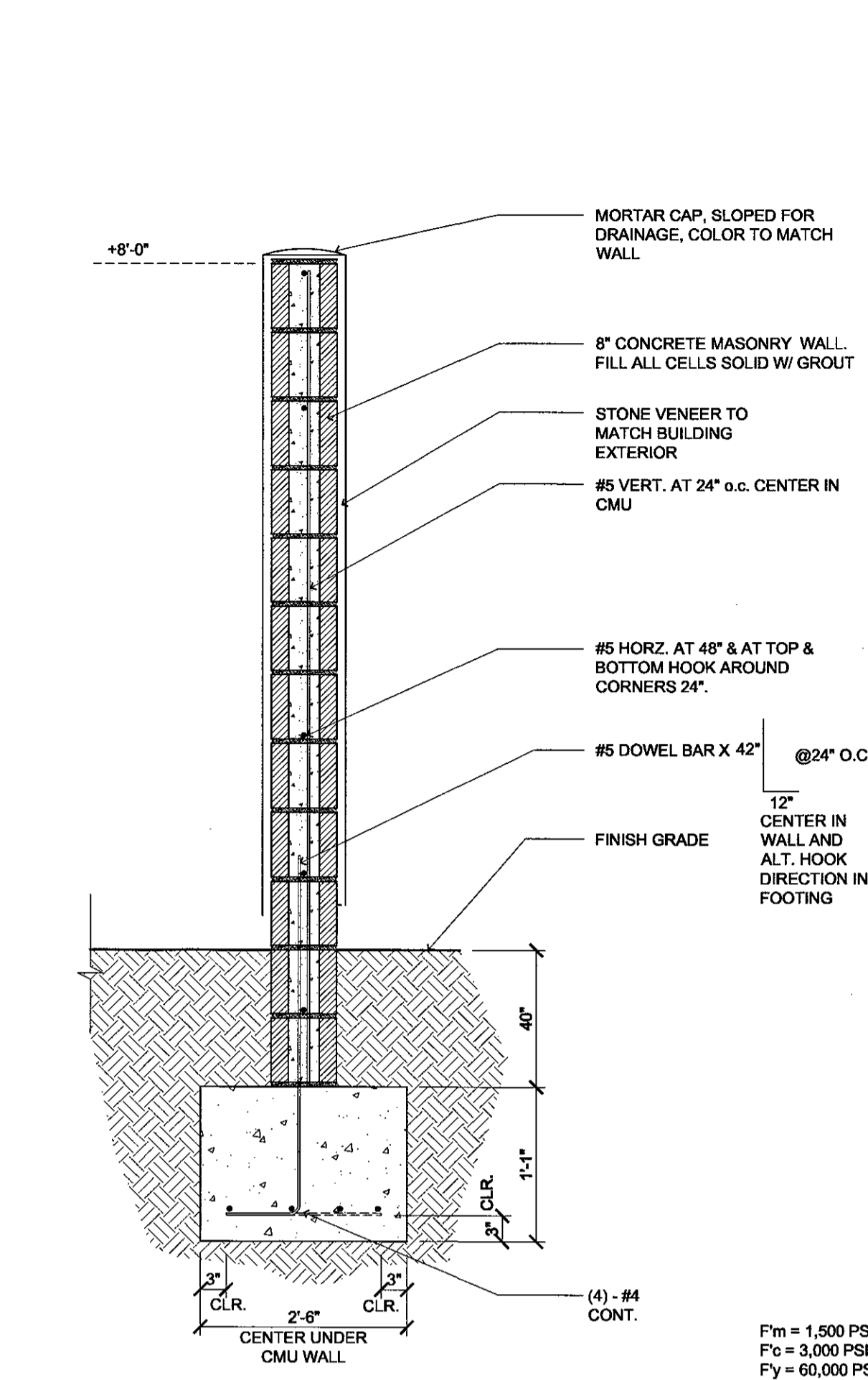
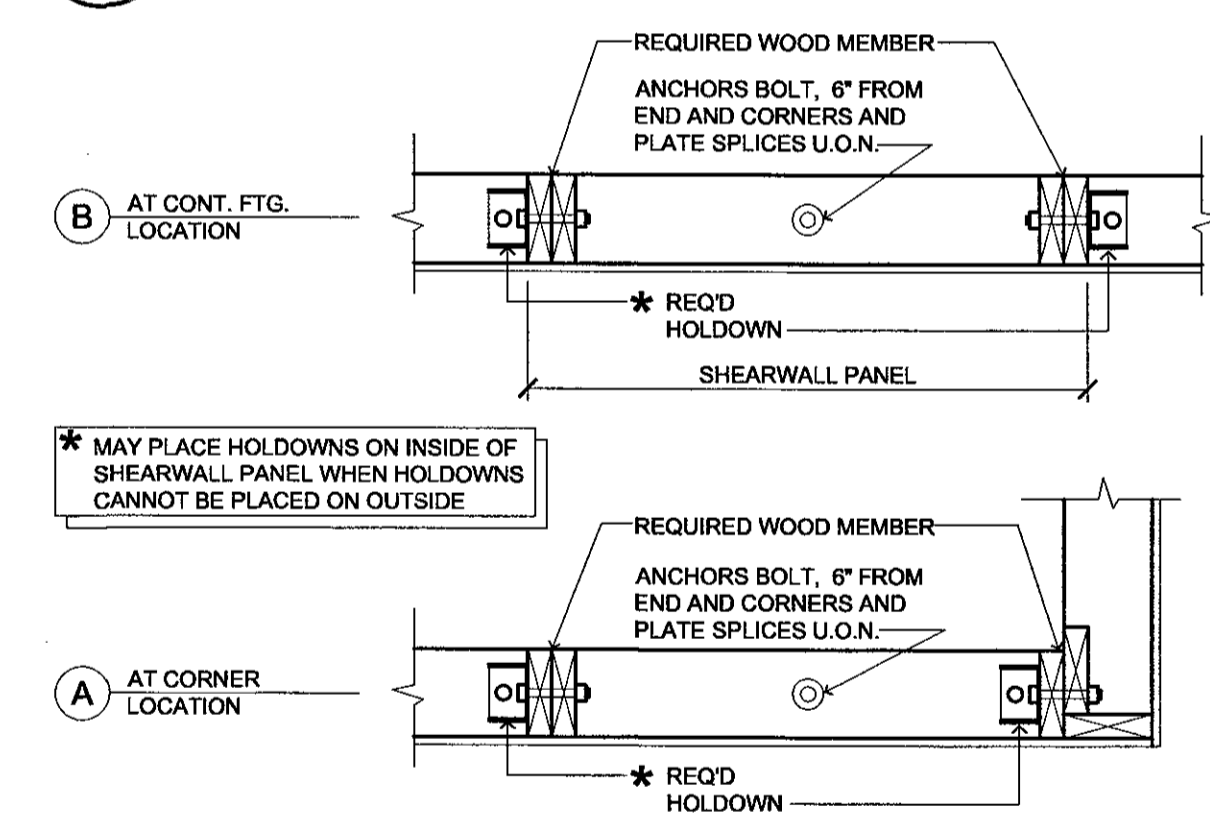


HOLDOWN SCHEDULE									
MARK	HOLDOWN	ANCHOR BOLT	ANCHOR SIZE	EMBED. LENGTH	WOOD MEMBER	ANCHORAGE TO WOOD	DETAILS	REMARKS	ALLOW LOAD (lbs)
HDU2	HDU2-SDS2.5	SSTB16	5/8"Ø	12-5/8"	(2) 2x STUDS	(6) SDS 1/4" x 2-1/2" SCREWS	PER DETAILS 5 & 6/PH3.1		3075

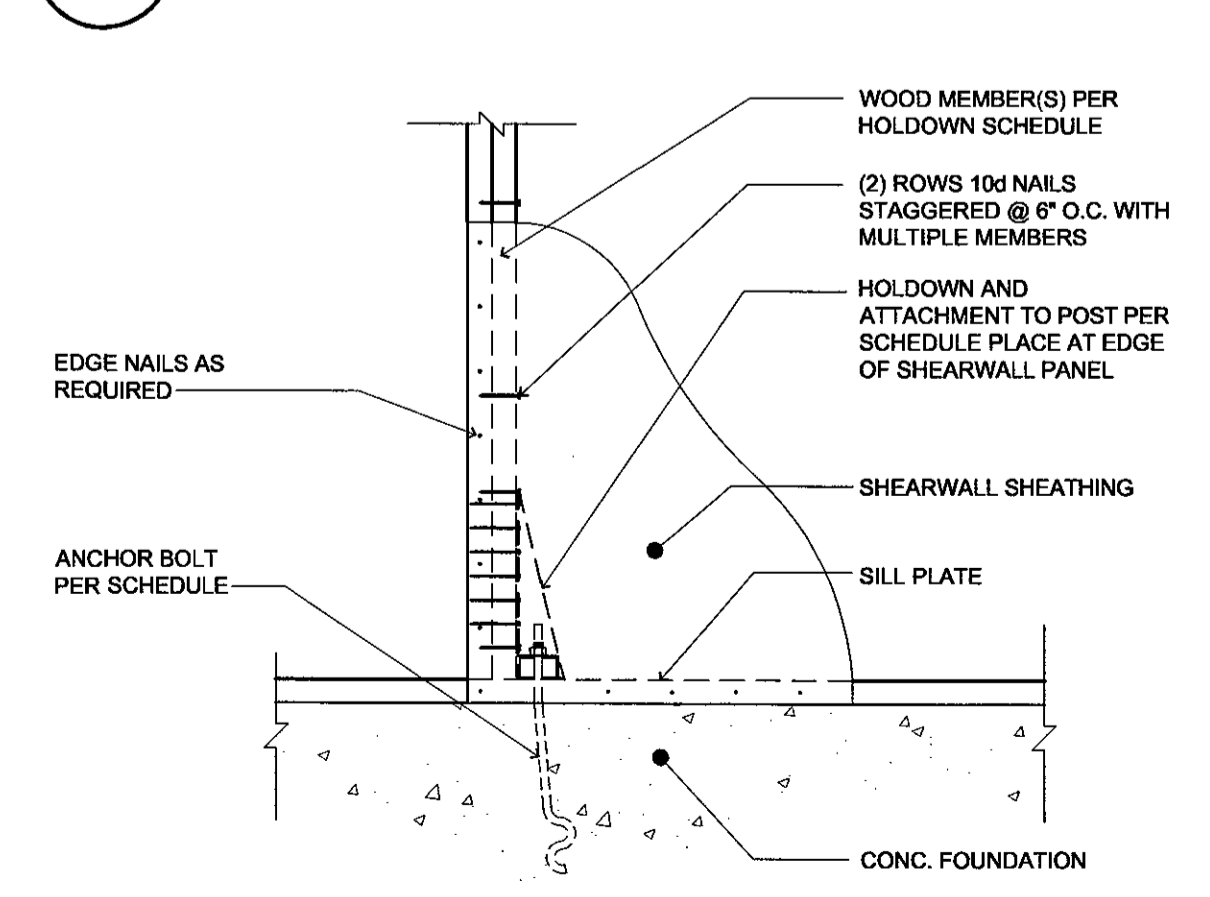
NOTE: ON ALL HD HOLDDOWNS, PLACE ONE (1) EXTRA VERTICAL #4 BAR FROM FOOTING INTO STEMWALL NEXT TO HD.



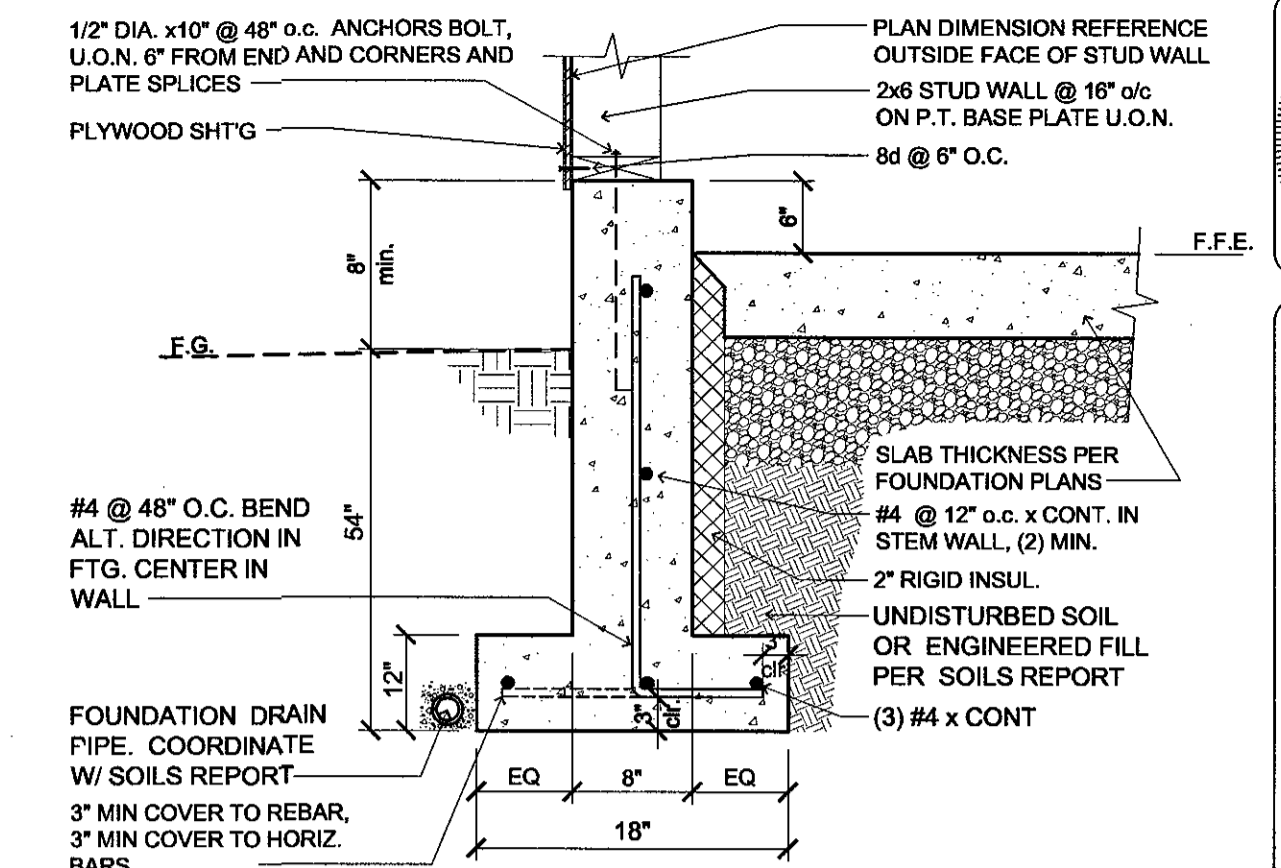
7 SCREEN WALL
SCALE: N.T.S.
P:\AWTHOR\NAME-PORTLANDPUMP HOUSE\DETAILS\02082022



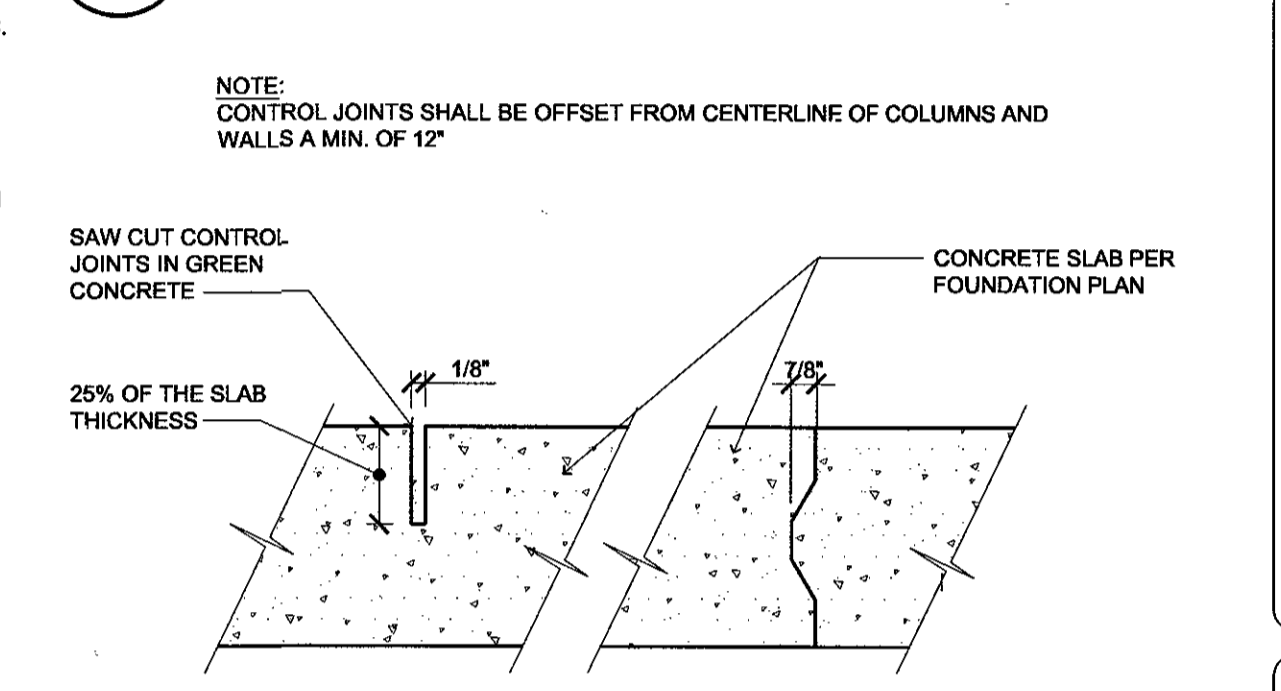
6 TYPICAL HOLDOWN PLACEMENT
SCALE: 1" = 1'-0"
T:\030CONC\2002\CAST\03030007



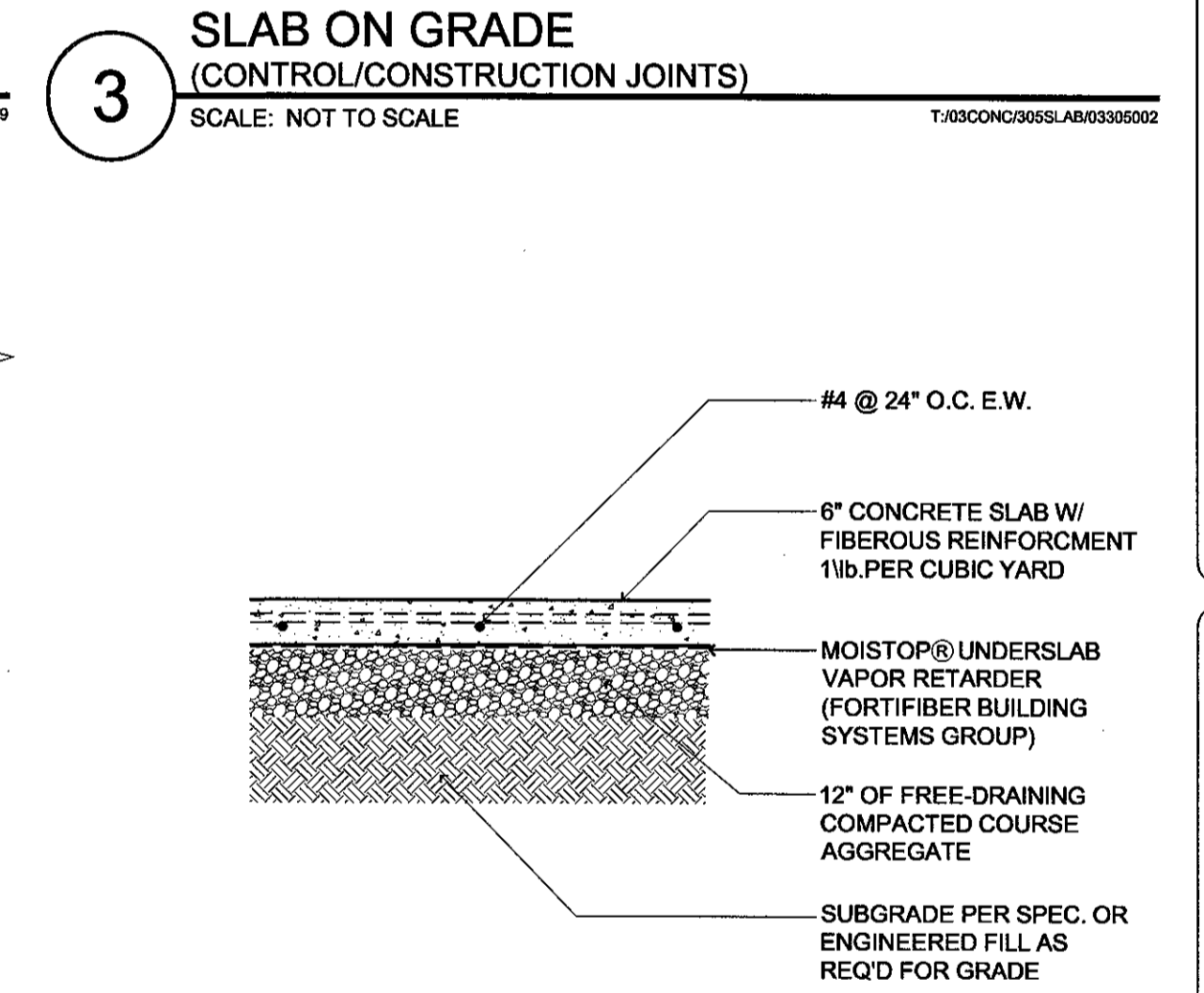
5 BUILT-UP COLUMN @ HOLDOWN LOCATION
SCALE: 1" = 1'-0"
T:\030CONC\2002\CAST\03030024



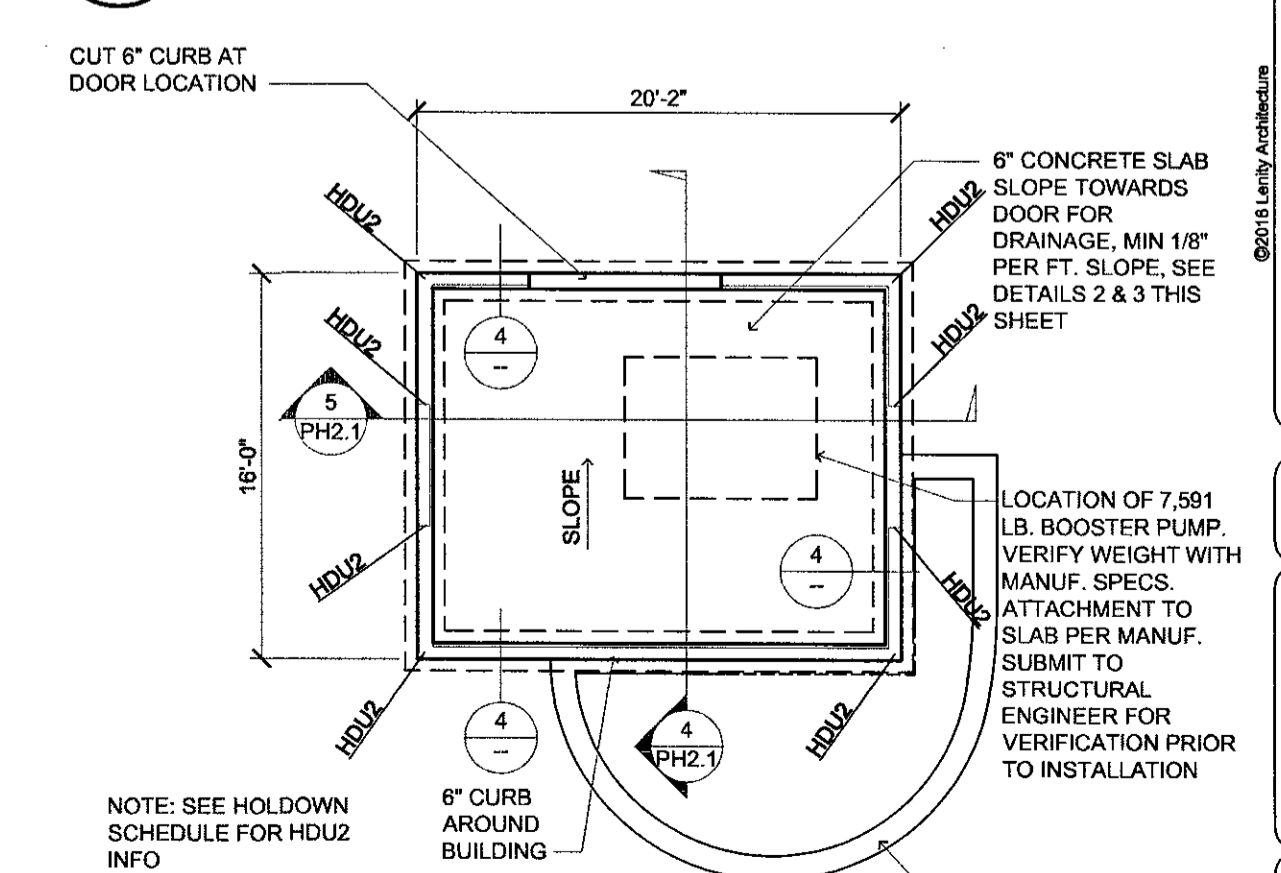
4 EXTERIOR WALL FOOTING (SPREAD FOOTING)
SCALE: NOT TO SCALE
P:\AWTHOR\NAME-PORTLANDPUMP HOUSE\DETAILS\02082022



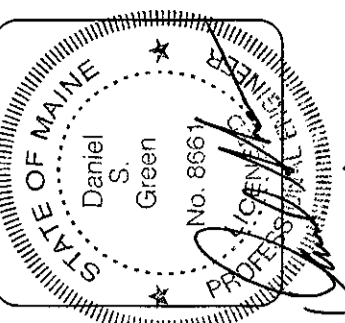
3 SLAB ON GRADE (CONTROL/CONSTRUCTION JOINTS)
SCALE: NOT TO SCALE
T:\030CONC\2002\ASB\03030020



2 SLAB ON GRADE (CONCRETE SLAB DETAIL)
SCALE: 3/4" = 1'-0"
T:\030CONC\2002\ASB\03030001



1 PUMP HOUSE (FOUNDATION PLAN)
SCALE: 1/8" = 1'-0"
P:\AWTHOR\NAME-PORTLANDPUMP HOUSE\DETAILS\02082022



lenity architecture
3150 Kettle Court SE, Salem, Oregon 97301
P: 503.399.1090 F: 503.399.0385
www.lenityarchitecture.com

COLSON AND COLSON GENERAL CONTRACTOR, INC.
2280 McGillchrist Street SE, Suite 200
SALEM, OREGON 97302
PHONE (503) 586-7401

PORTLAND RETIREMENT RESIDENCE
802 OCEAN AVE., PORTLAND, MAINE 04103

PUMP HOUSE FOUNDATION PLAN AND DETAILS

DATE: 5/27/2016
REVISED DATE:
SHEET PH3.1