

lenity
architecture

3160 Maine Court SE, Salem, Oregon 97302
P 503 399 1050 F 503 399 0565
www.lenityarchitecture.com

COLSON AND COLSON
GENERAL CONTRACTOR, INC.
2280 McGill-Christ Street SE, Suite 200
Salem, Oregon, 97302
PHONE (503) 586-7401

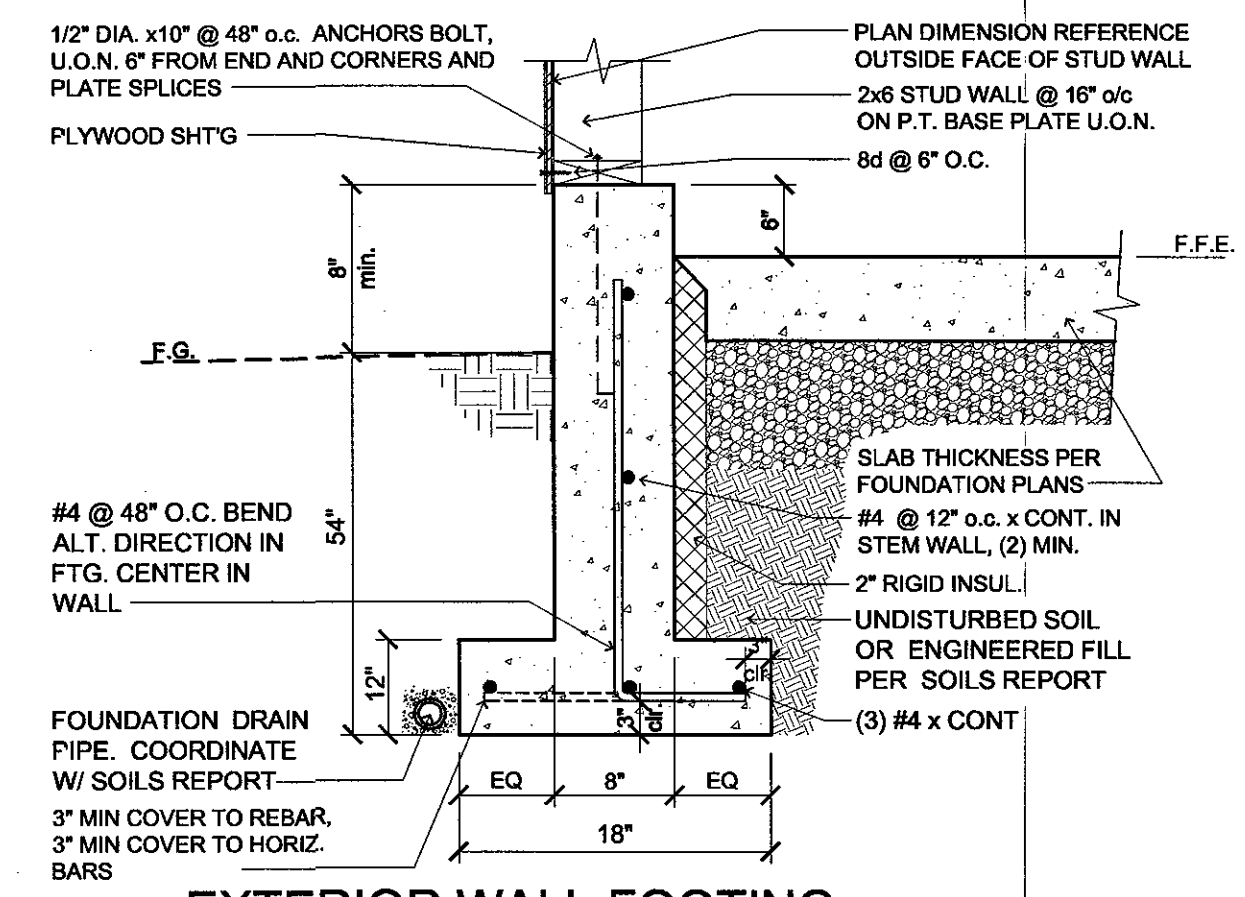
PORTLAND
RETIREMENT RESIDENCE
802 OCEAN AVE., PORTLAND, MAINE 04103

PUMP HOUSE
FOUNDATION PLAN
AND DETAILS

DATE
5/27/2016

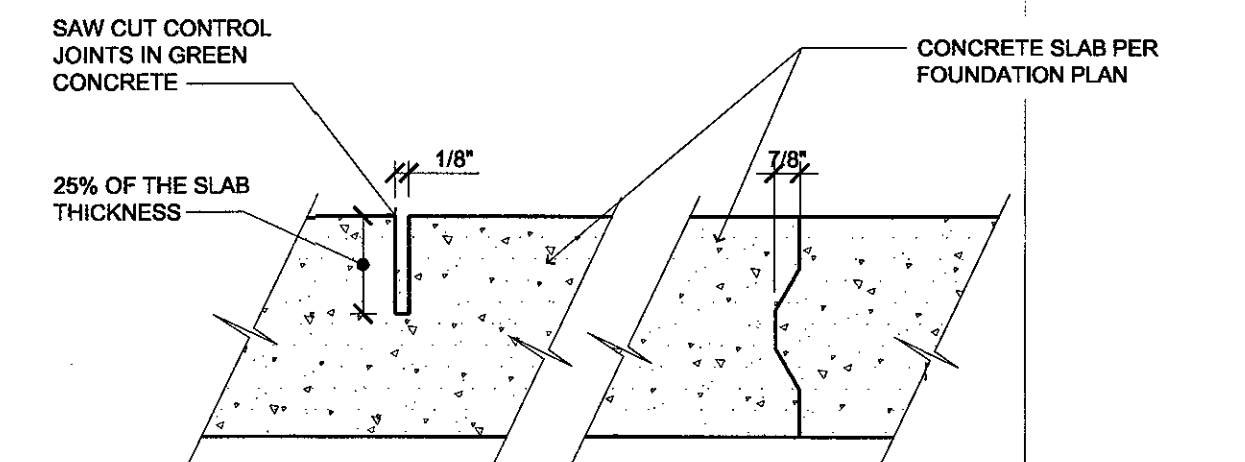
REVISED DATE

SHEET
PH3.1



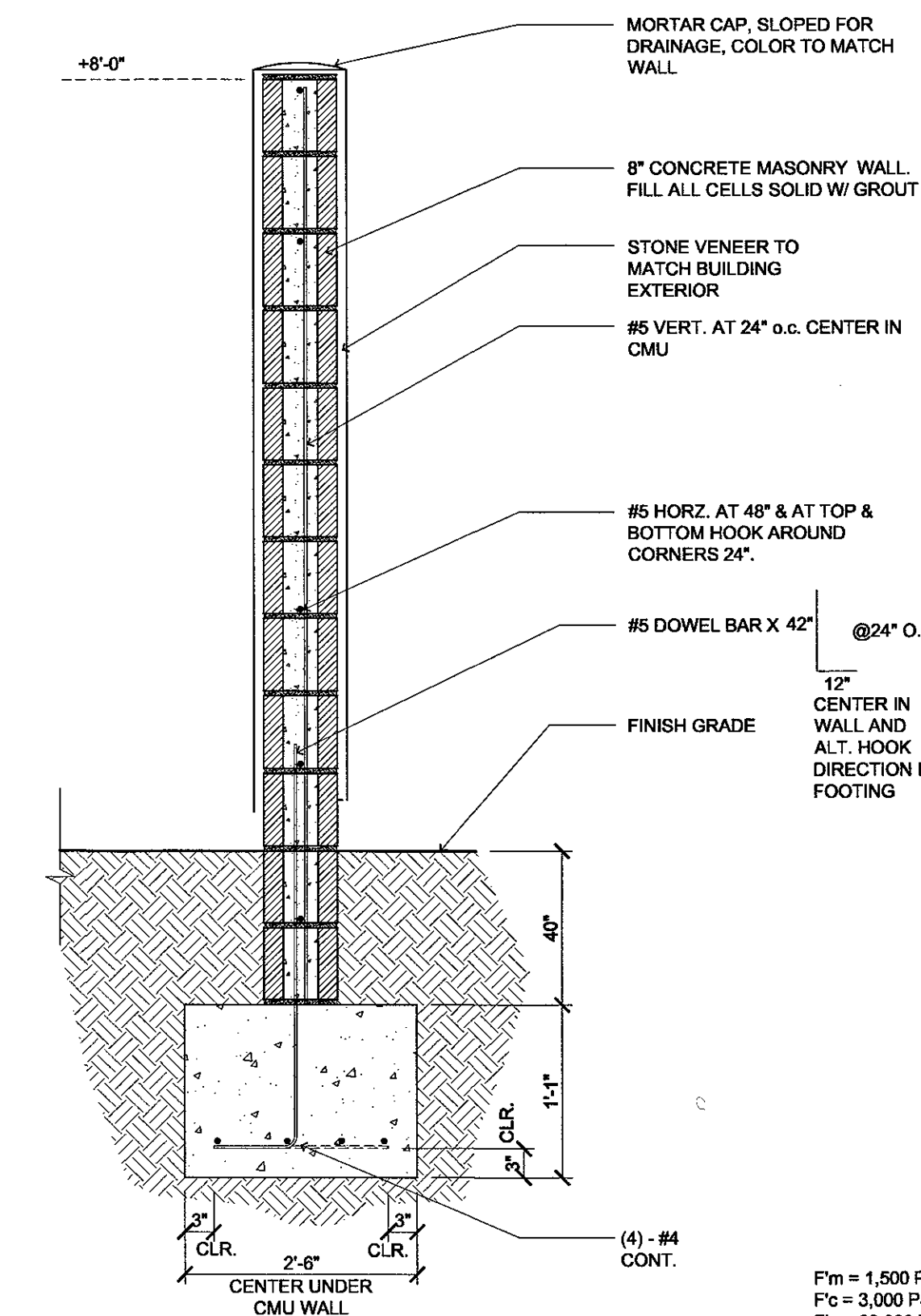
4 EXTERIOR WALL FOOTING (SPREAD FOOTING)
SCALE: NOT TO SCALE
P:\HAWTHORNE-PORTLAND-PUMP HOUSE\DETAILS\10530202

NOTE: CONTROL JOINTS SHALL BE OFFSET FROM CENTERLINE OF COLUMNS AND WALLS A MIN. OF 12"

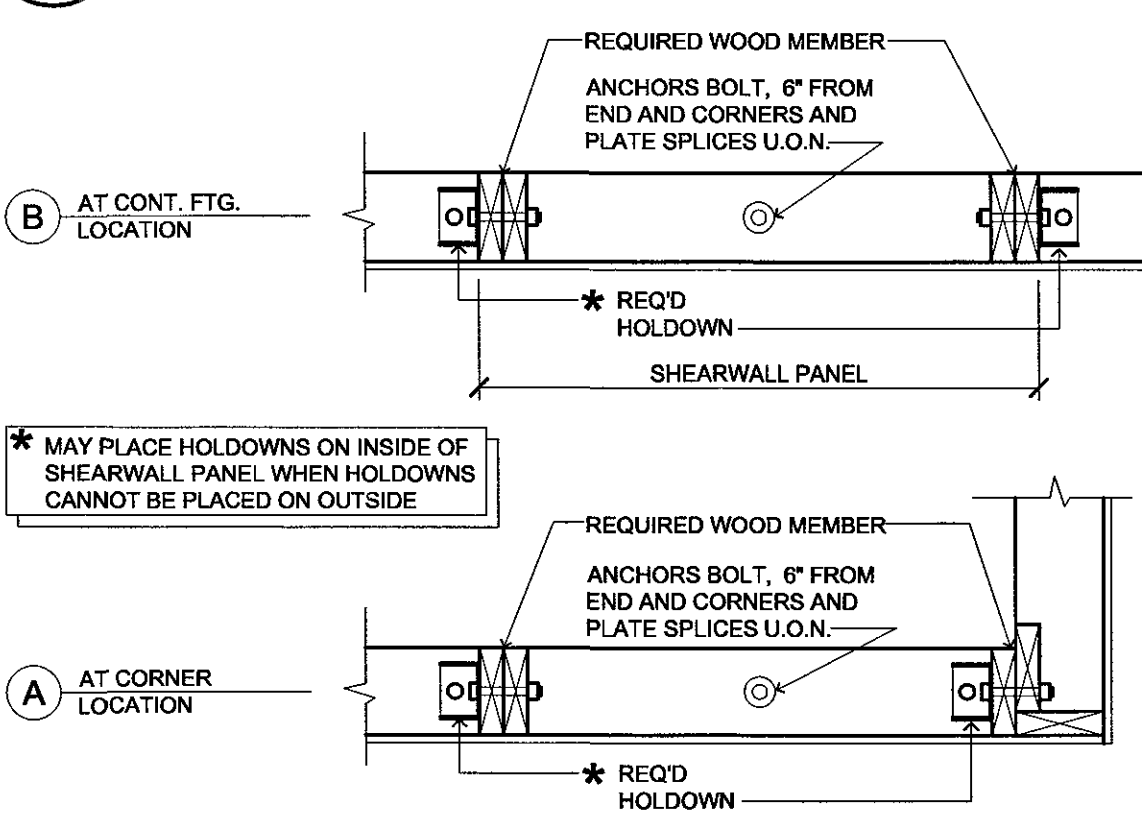


3 SLAB ON GRADE (CONTROL/CONSTRUCTION JOINTS)
SCALE: NOT TO SCALE
T:\03\CONC\2005\LAB\03305001

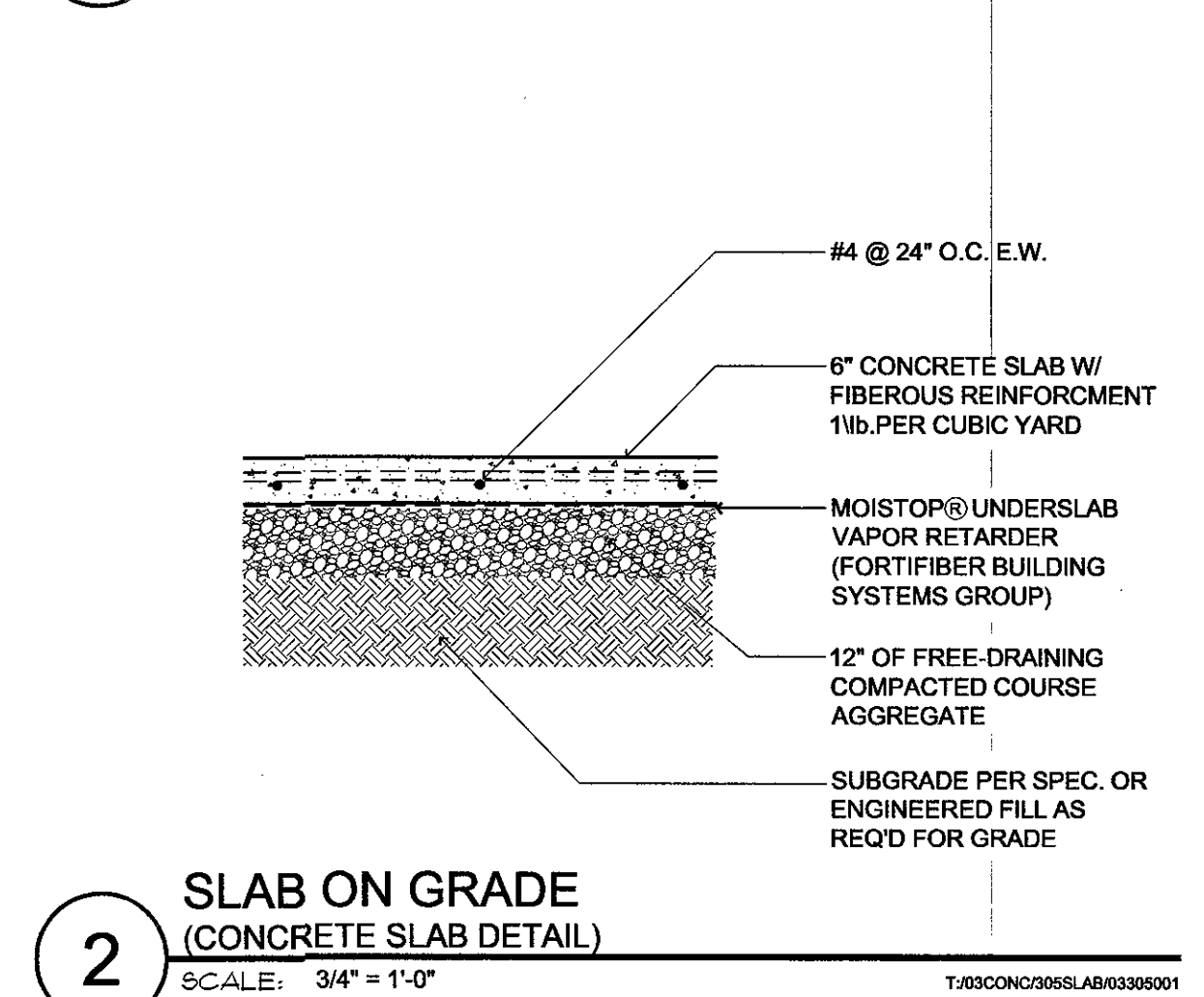
CONTROL JOINT INSTALL EVERY 600' MAX
CONSTRUCTION JOINT INSTALL EVERY 20000' MAX
ALL ATTEMPTS SHOULD BE MADE TO ACHIEVE A SQUARE GRID OF CONTROL AND CONSTRUCTION (COLD) JOINTS



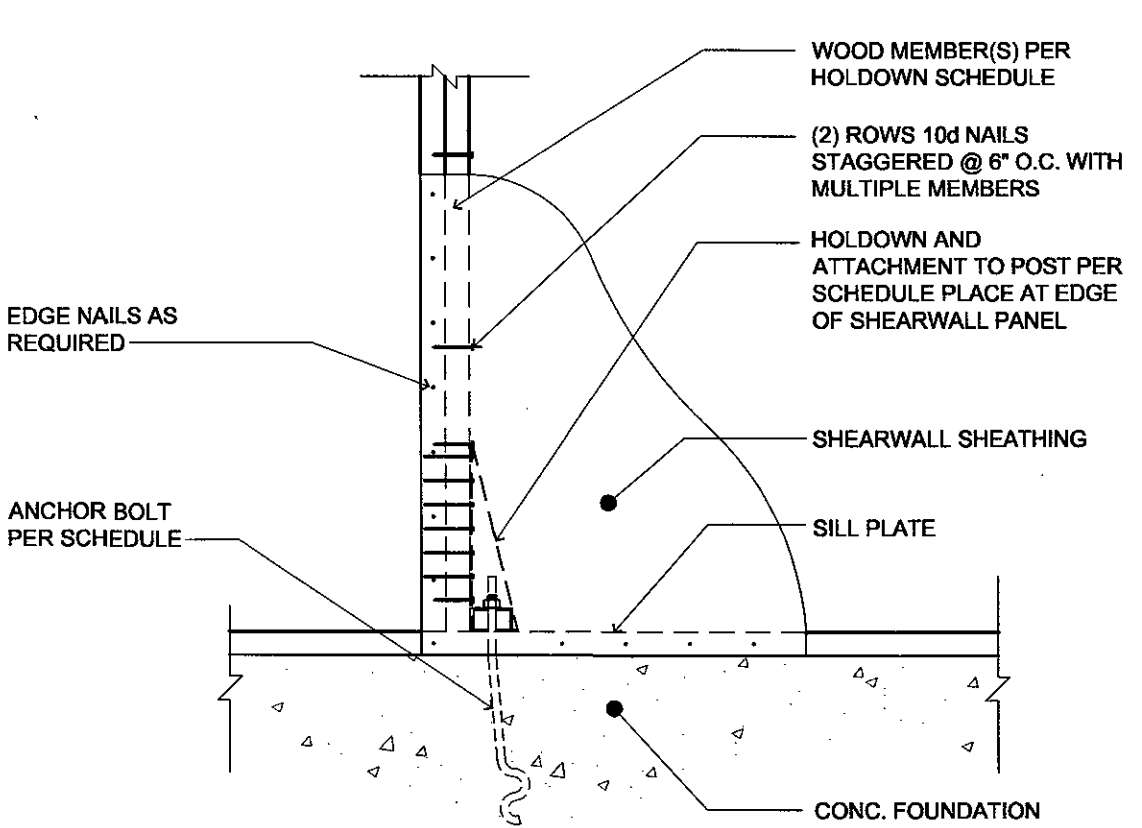
7 SCREEN WALL
SCALE: N.T.S.
P:\HAWTHORNE-PORTLAND-PUMP HOUSE\DETAILS\10530202



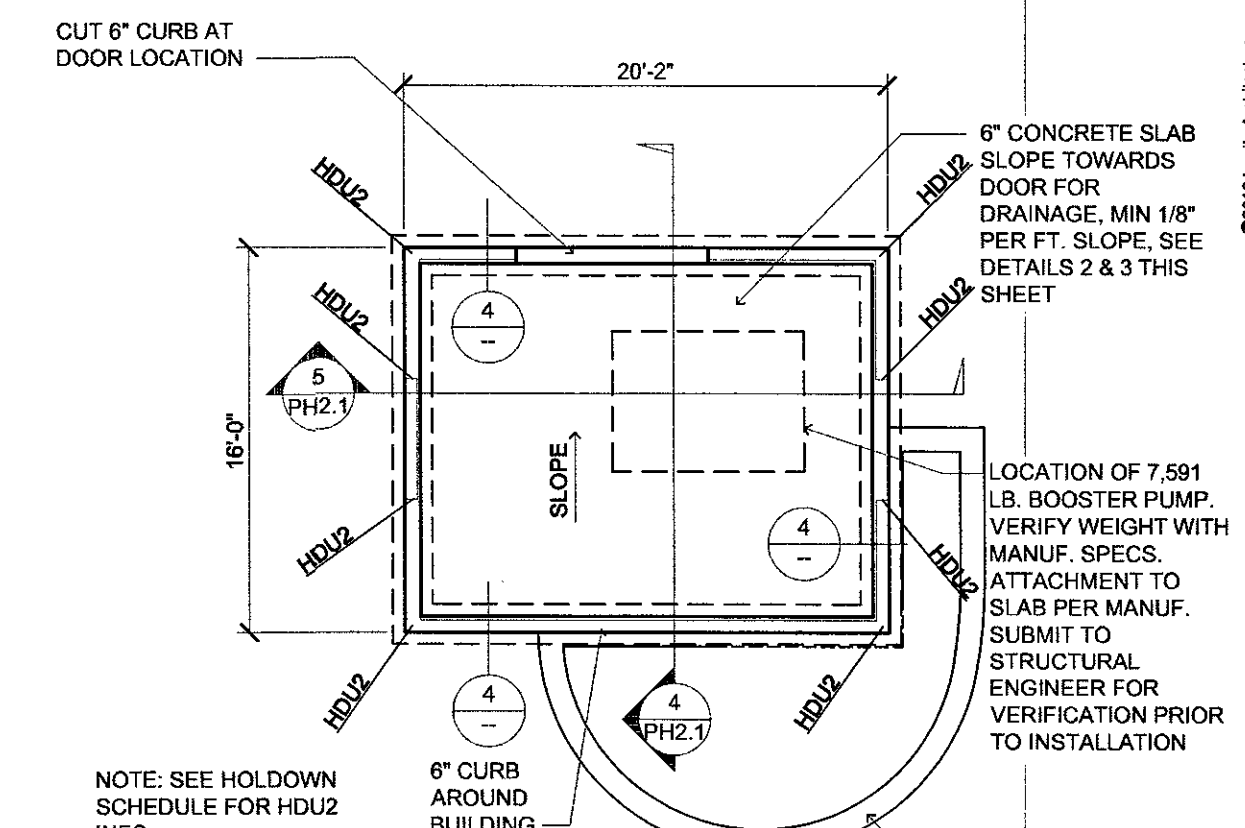
6 TYPICAL HOLDOWN PLACEMENT
SCALE: 1" = 1'-0"
T:\03\CONC\2005\LAB\03305001



2 SLAB ON GRADE (CONCRETE SLAB DETAIL)
SCALE: 3/4" = 1'-0"
T:\03\CONC\2005\LAB\03305001



5 BUILT-UP COLUMN (@HOLDOWN LOCATION)
SCALE: 1" = 1'-0"
T:\03\CONC\2005\LAB\03305001



1 PUMP HOUSE (FOUNDATION PLAN)
SCALE: 1/8" = 1'-0"
P:\HAWTHORNE-PORTLAND-PUMP HOUSE\DETAILS\10530202

HOLDOWN SCHEDULE									
MARK	HOLDOWN	ANCHOR BOLT	ANCHOR SIZE	EMBED. LENGTH	WOOD MEMBER	ANCHORAGE TO WOOD	DETAILS	REMARKS	ALLOW LOAD (lbs)
HDU2	HDU2-SDS2.5	SSTB16	5/8"Ø	12-5/8"	(2) 2x STUDS	(6) SDS 1/4" X 2-1/2" SCREWS	PER DETAILS 5 & 6/PH3.1		3075

NOTE: ON ALL HD HOLDOWNS, PLACE ONE (1) EXTRA VERTICAL #4 BAR FROM FOOTING INTO STEMWALL NEXT TO HD.

www.lenity.com | 3160 Maine Court SE, Salem, Oregon 97302 | P 503 399 1050 | F 503 399 0565 | www.lenityarchitecture.com