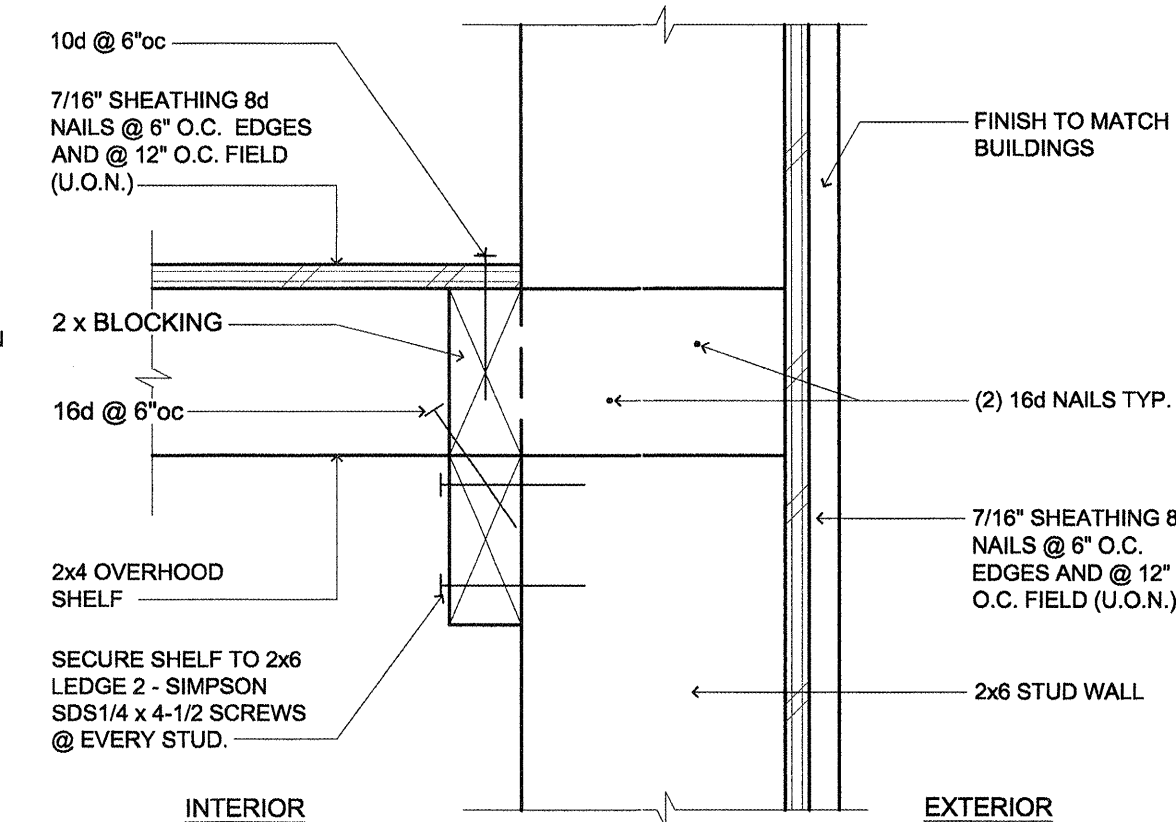
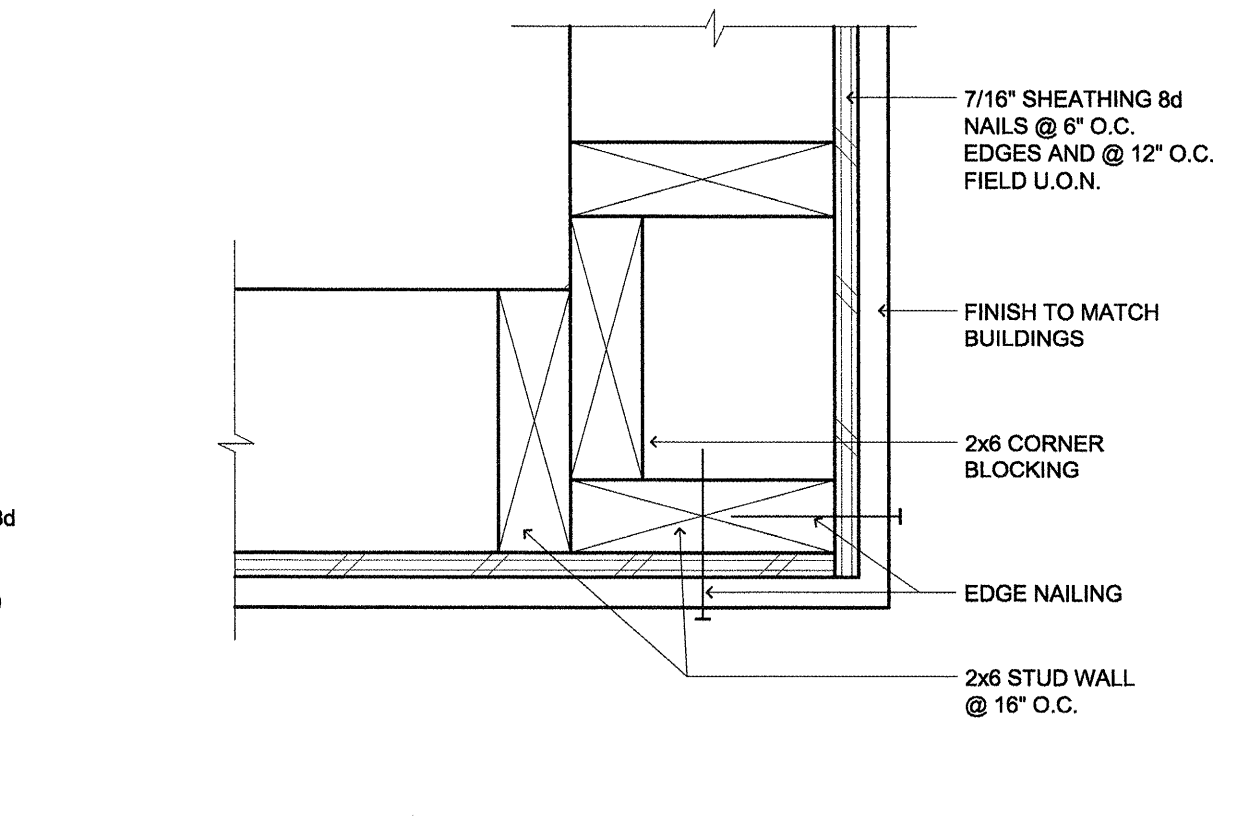


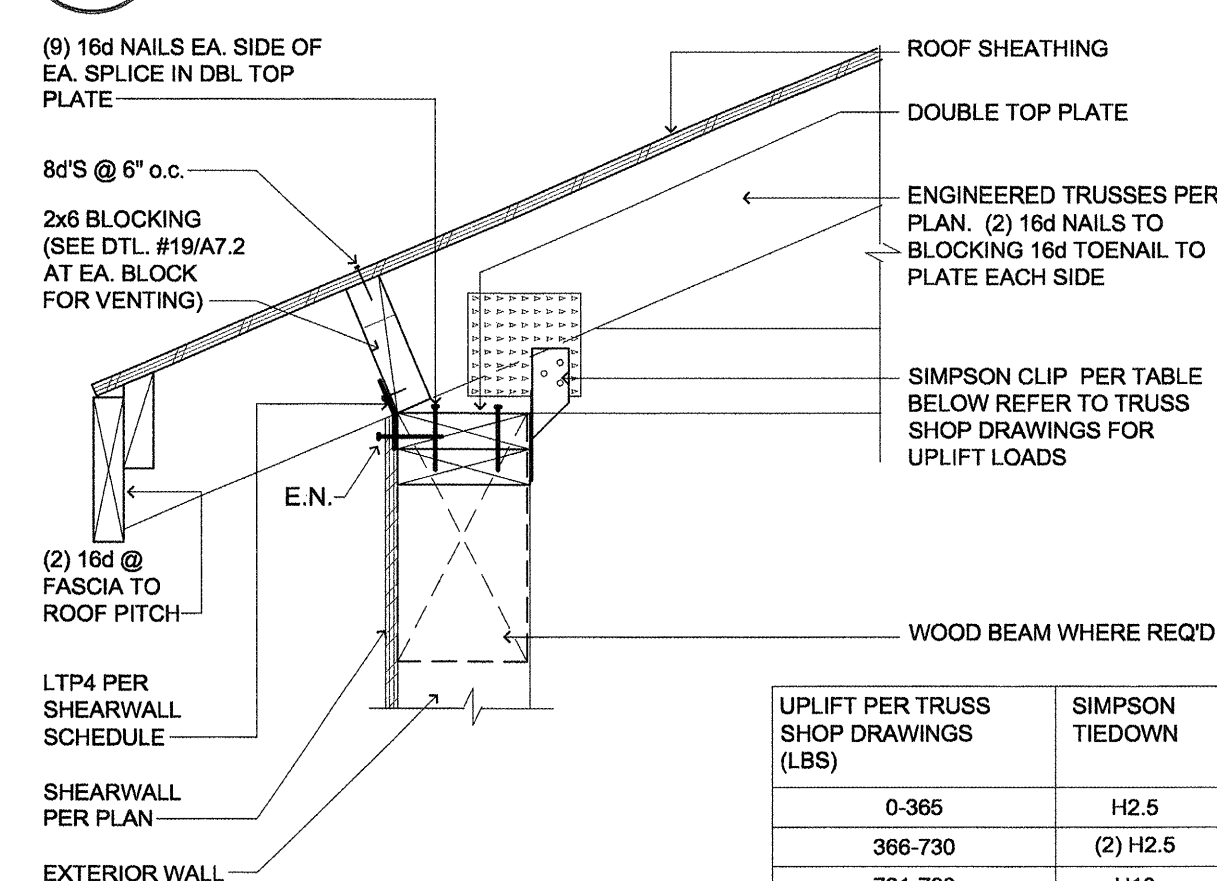
8 WALL INTERSECTION DETAIL
SCALE: 3" = 1'-0"
T:\108PECL\7530GARG\10530034



5 WALL DETAIL (OVERHOOD SHELF)
SCALE: 3" = 1'-0"
T:\108PECL\7530GARG\10530010



4 CORNER DETAIL (UNINSULATED)
SCALE: 3" = 1'-0"
T:\108PECL\7530GARG\10530008



7 BLOCKING DETAIL (ROOF AT EAVE / NOT VENTED)
SCALE: N.T.S.
T:\06WD&PLS\110FRAMG\06110125

UPLIFT PER TRUSS SHOP DRAWINGS (LBS)	SIMPSON TIEDOWN (LBS)
0-365	H2.5
366-730	(2) H2.5
731-780	H10
781-1145	H10 + H2.5

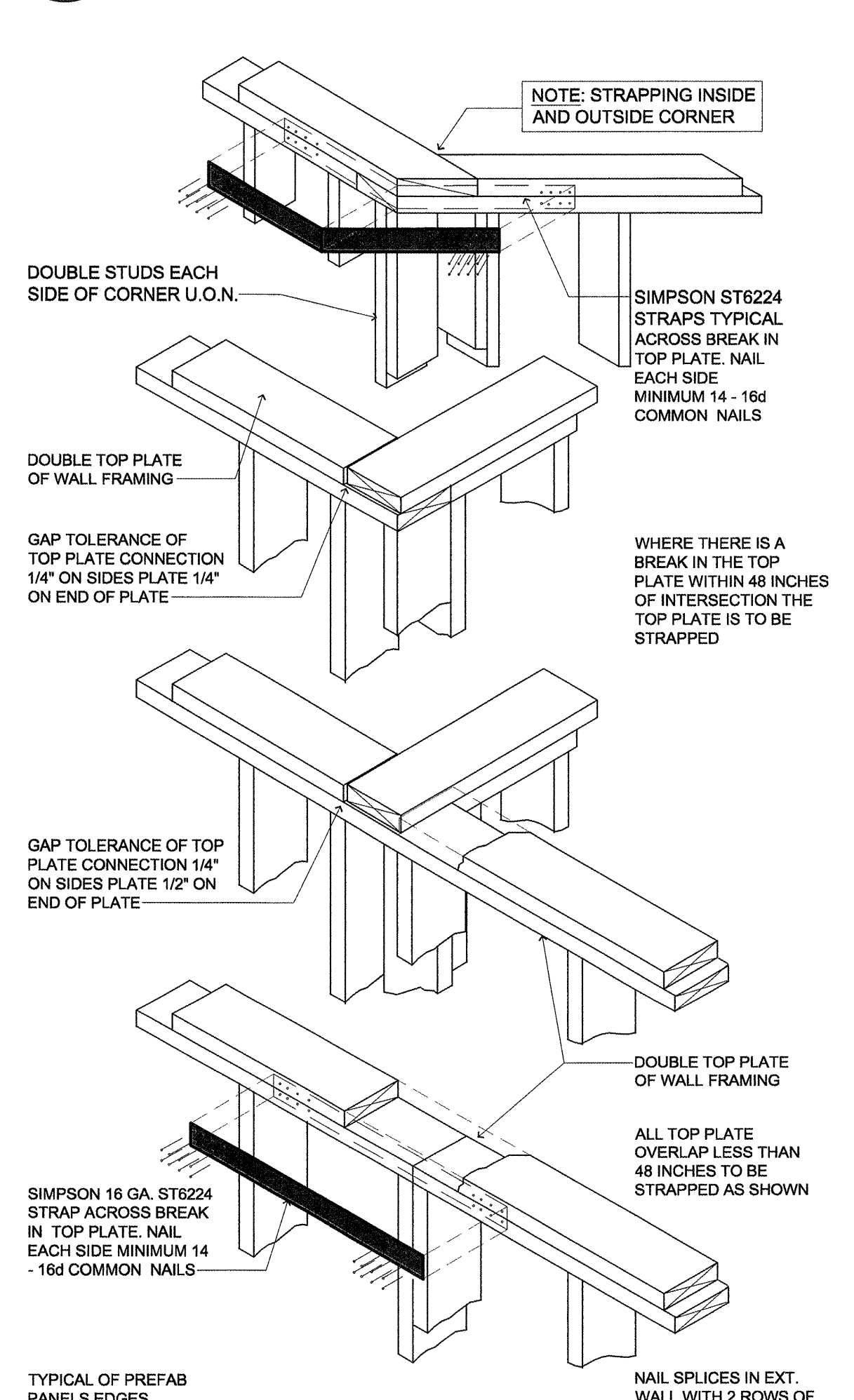
GENERAL NOTE:
1. CONNECTORS AND FASTENERS FOR PRESERVATIVE-TREATED AND FIRE-RETARDANT-TREATED WOOD SHALL BE OF HOT-DIPPED ZINC-COATED GALVANIZED STEEL, STAINLESS STEEL, SILICON BRONZE, OR COPPER INCLUDING BUT NOT LIMITED TO ANCHOR BOLTS, POWDER ACTUATED FASTENERS, NAILS, SCREWS, BOLTS, AND METAL FRAMING HARDWARE. (ZINC COATING WEIGHTS SHALL COMPLY WITH EITHER ASTM A 153M OR ASTM A 641, SUPPLEMENTARY REQUIREMENTS.)
2. PREENGINEERED METAL PLATE CONNECTED WOOD TRUSSES SHALL BE BRACED IN ACCORDANCE WITH TRUSS PLATE INSTITUTE'S "HANDLING, INSTALLING AND BRACING METAL PLATE CONNECTED WOOD TRUSSES, HB-91".
3. PREENGINEERED TRUSS SHOP DRAWINGS SHALL BE AVAILABLE ON THE JOB SITE DURING THE TIMES OF INSPECTION AND SHALL BEAR CLEAR INDICATION THAT THEY HAVE BEEN REVIEWED AND APPROVED BY THE PROJECT STRUCTURAL ENGINEER-OF-RECORD * (OR ARCHITECT-OF-RECORD FOR PROJECTS WITHOUT A STRUCTURAL ENGINEER-OF-RECORD)

KEY NOTES:
1. 3X STUDS AT PANELS EDGES.
2. 5/8" GYP. SHT'G TO BE SECURED W/ 6d COOLER NAILS DIRECTLY TO STUDS
3. NAILS ARE TO BE COMMON OR HOT DIPPED GALVANIZED IRON.

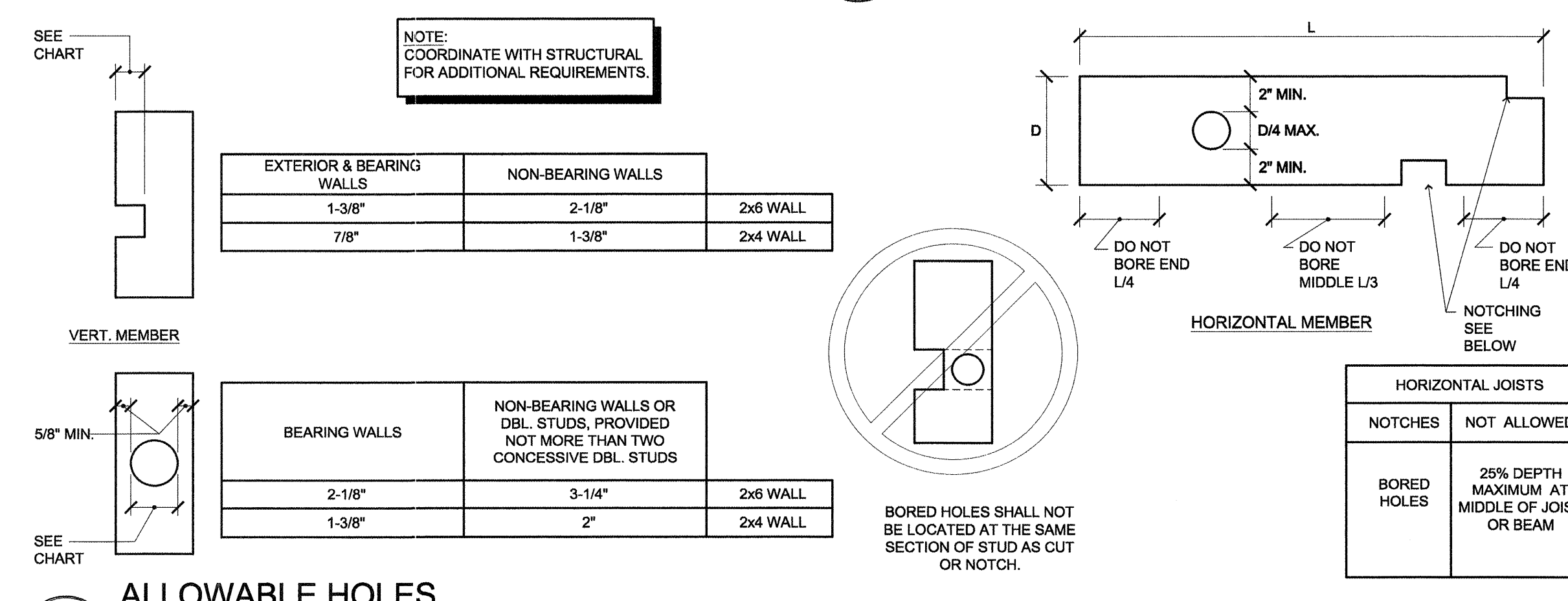
SHEAR PANEL NOTE:
* SHEAR VALUES ARE ADJUSTED FOR SPRUCE-PINE-FIR STUDS @ 16" O.C. U.O.N.
* ALL APA SHT'G SHEAR WALLS TO BE BACKED W/ 2" NOMINAL OR WIDER FRAMING
* WHEN APA RATED PANELS ARE INSTALLED TO BOTH SIDES OF WALL PANEL JOINTS OFFSET TO FALL ON DIFFERENT FRAMING MEMBERS
* NAILING NOT TO PENETRATE THE OUTER VENEER LAYER
* ALL EDGES ON APA RATED PANELS TO BE BLOCKED TO MAINTAIN STRENGTH

SHEARWALL MARK	APA SHT'G. TYPE & THICKNESS	SHT'G. NAIL INFO	DBL TOP & CONN.	SHEARWALL TO CONC. CONN.	(#) LOAD
A	5/8" -	6d CLR. 7" 7"	2 6" o.c. 24" o.c.	1/2" @ 48" 5/8" @ 48"	100
B	7/16" -	8d 6" 12"	5" o.c. 22" o.c.	1/2" @ 36" 5/8" @ 48"	210
C	7/16" -	8d 4" 12"	3" o.c. 14" o.c.	1/2" @ 24" 5/8" @ 36"	320
D	7/16" -	8d 3" 12"	2-1/2" o.c. 11" o.c.	1/2" @ 16" 5/8" @ 30"	415
E	7/16" -	8d 2" 12"	1 2" o.c. 8" o.c.	1/2" @ 12" 5/8" @ 21"	535
F	7/16" - YES	8d 3" 12"	1 2" o.c. 5 1/2" o.c.	1/2" @ 10" 5/8" @ 15"	830

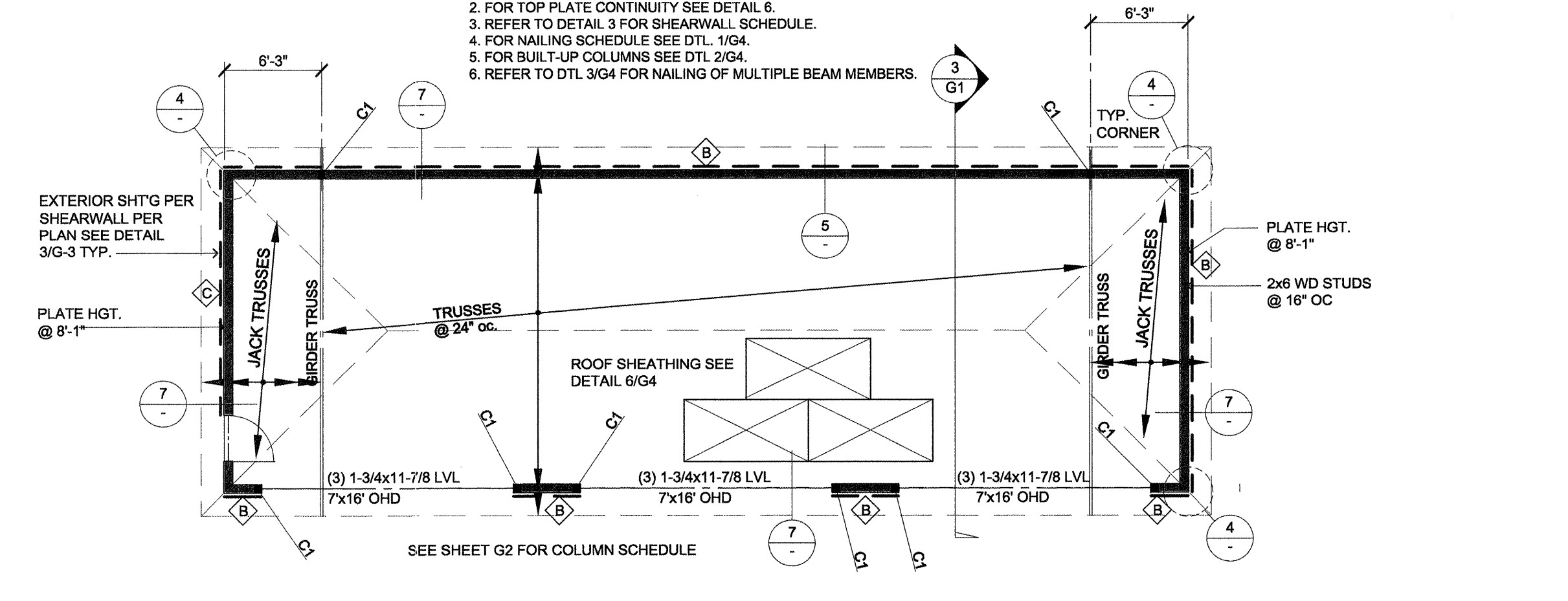
3 SHEARWALL SCHEDULE (OUTBUILDINGS)
SCALE: N.T.S.
T:\06WD&PLS\110FRAMG\06110120



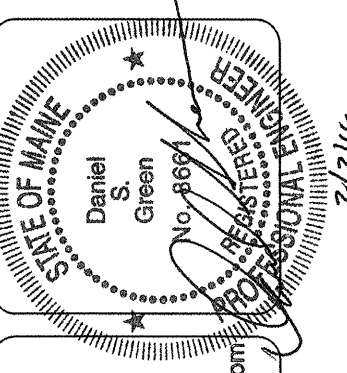
6 TOP PLATE CONNECTION (PLATE CONTINUITY)
SCALE: N.T.S.
T:\06WD&PLS\110FRAMG\06110154



2 ALLOWABLE HOLES (SOLID WOOD FRAMING MEMBERS ONLY)
SCALE: N.T.S. (1:4)
T:\06WD&PLS\110FRAMG\06110002



1 FRAMING PLAN (GARAGE)
SCALE: 1/8" = 1'-0"
T:\108PECL\7530GARG\10530012



lenity architecture
3502 Kettle Court SE, Salem, Oregon 97301
P: 503.399.1050 F: 503.399.0655 W: lenityarchitecture.com

COLSON AND COLSON
GENERAL CONTRACTOR, INC.
2280 MCGILCHRIST STREET SE, SUITE 200
SALEM, OREGON, 97302
PHONE (503) 586-7401

PORTLAND RETIREMENT RESIDENCE
802 OCEAN AVE. PORTLAND, MAINE 04103

GARAGE FRAMING PLAN AND DETAILS

DATE: 8/28/2015
REVISED DATE: 9/22/2015
SHEET: G3

www.11x17.com 1-877-PAW-INDOW 9042202016 120 PAW-INDOW Blog: http://www.11x17.com/indow 1/3 3/11/2015 12:33