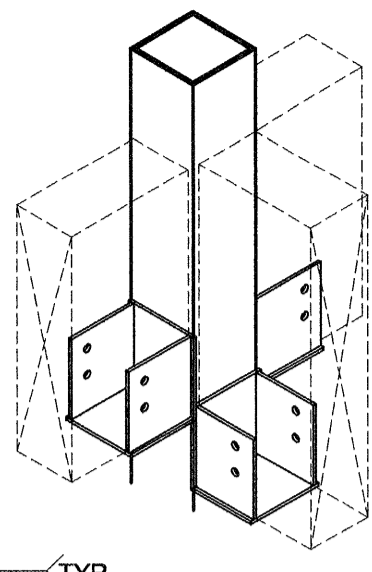
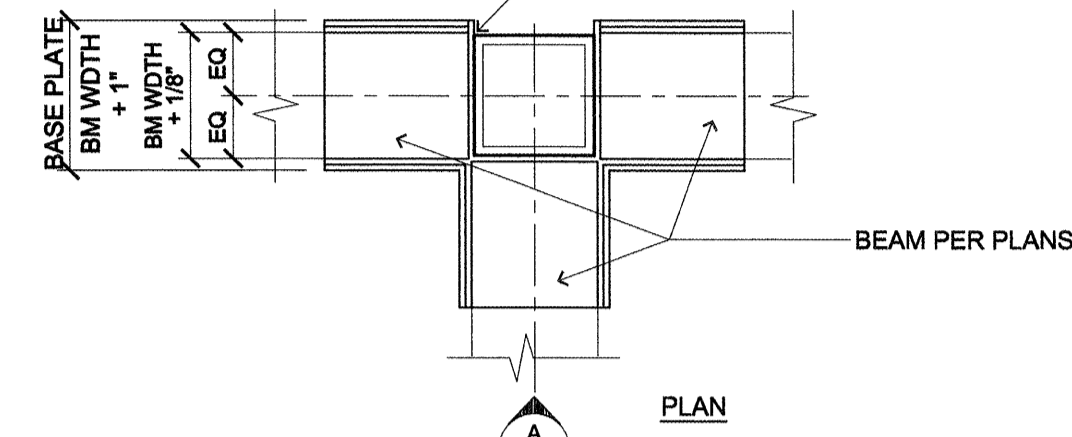


SIDE PLATE STEEL TO BE 1/4" LOW CARBON STEEL. BOT. PLATE AND FACE TO BE 3/8" LOW CARBON STL. ALL WELDS TO BE 1/4" FILLET WELDS (U.N.O.)

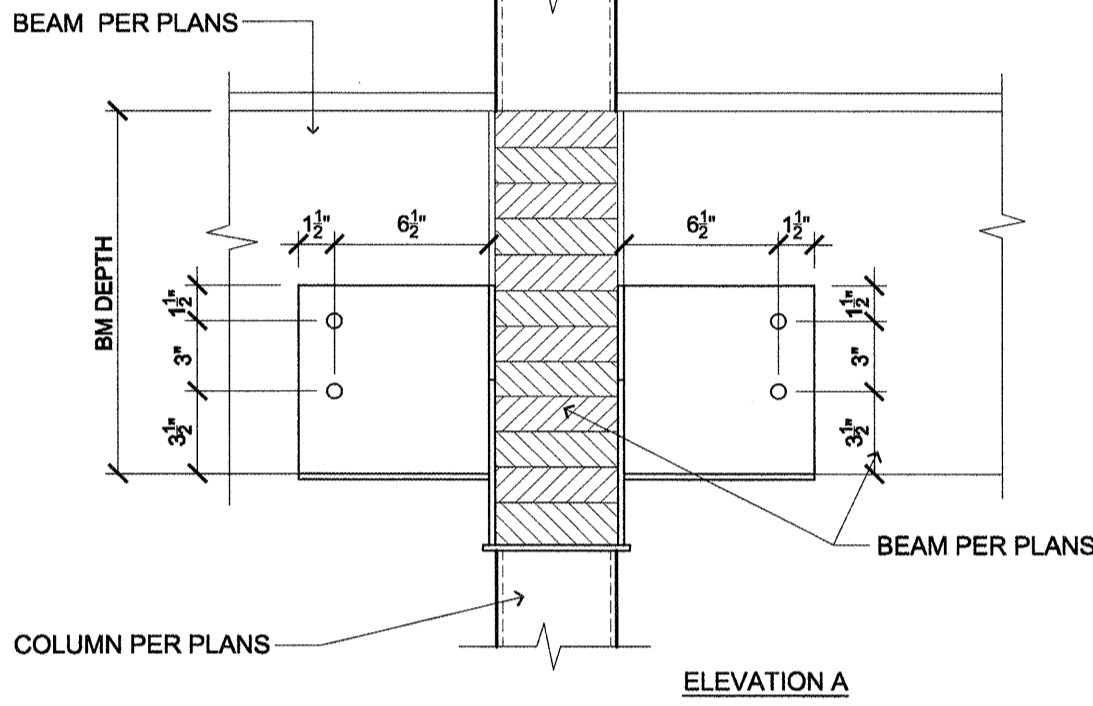
ALL BEAMS ARE TO HAVE BEAM CENTERLINES INTERSECTING AT COLUMN CENTER



ISOMETRIC



PLAN



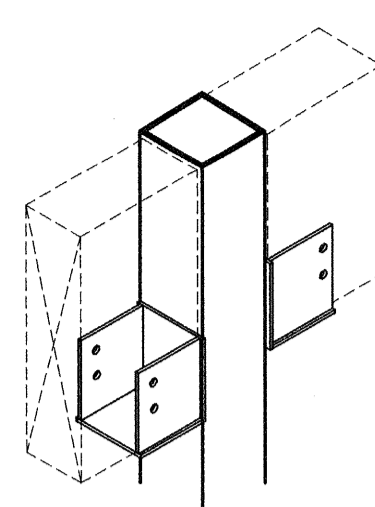
ELEVATION A

14 CONNECTION DETAIL (WD BEAM TO CONT STL COL) SCALE: NOT TO SCALE (1:8)

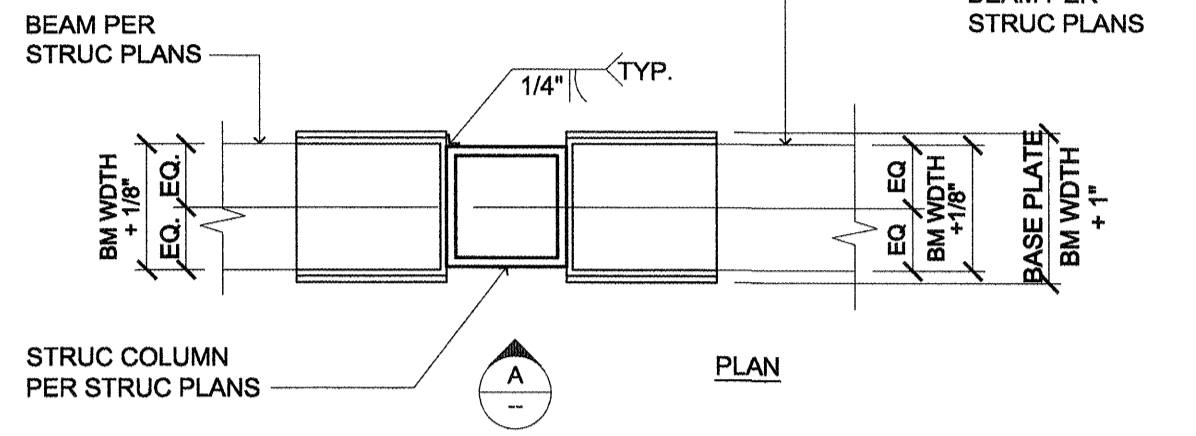
T:\06\WDP\LS\150\WDM\T1\06150038

ALL BEAMS ARE TO HAVE BEAM CENTERLINES INTERSECTING AT COLUMN CENTER

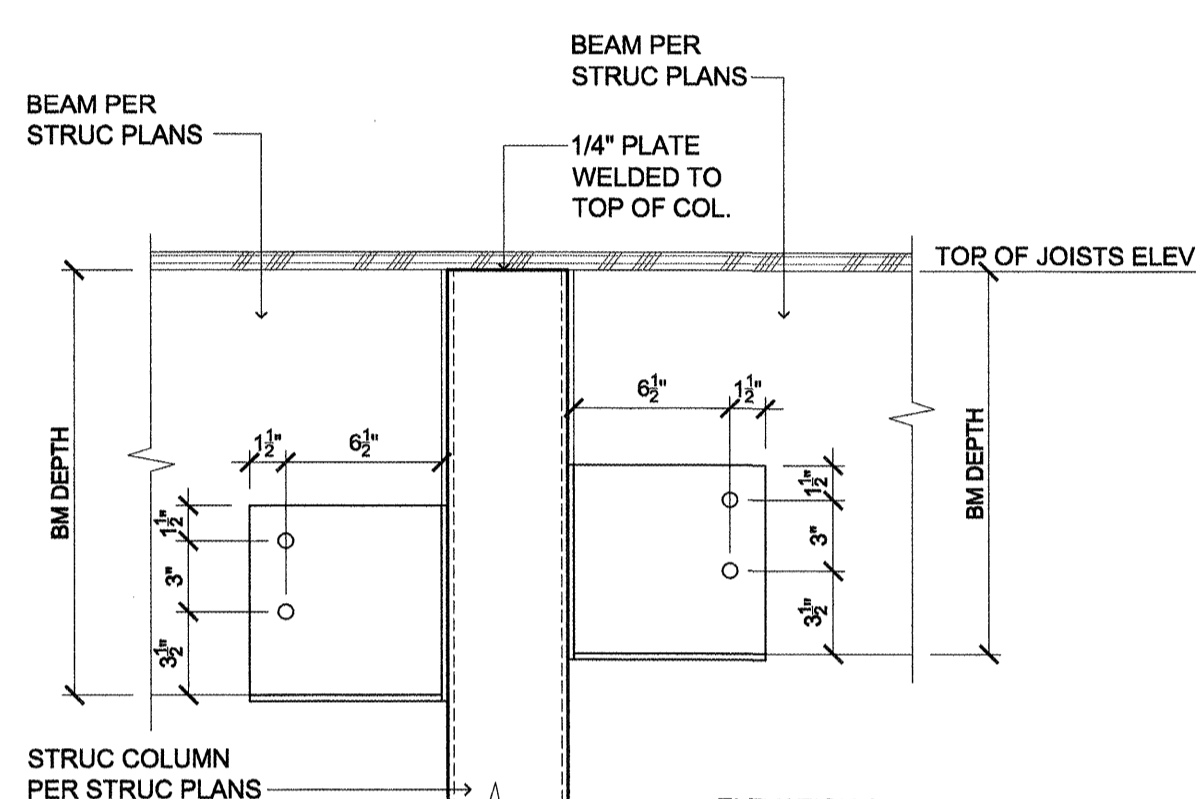
SIDE PLATE STEEL TO BE 1/4" LOW CARBON STEEL. BOT. PLATE AND FACE TO BE 3/8" LOW CARBON STL. ALL WELDS TO BE 1/4" FILLET WELDS (U.N.O.)



ISOMETRIC



PLAN

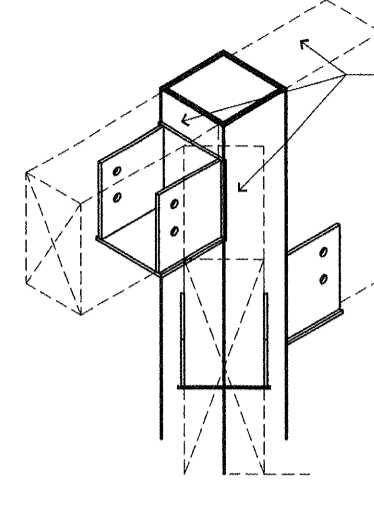


ELEVATION A

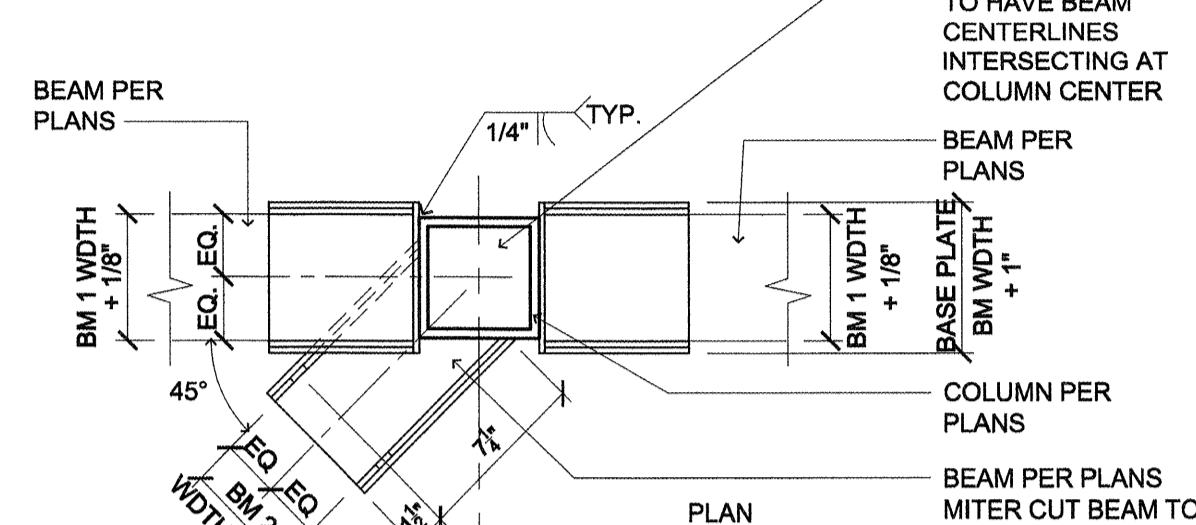
12 CONNECTION DETAIL (TWO WOOD BEAMS TO STL COL) SCALE: NOT TO SCALE (1:8)

T:\06\WDP\LS\150\WDM\T1\06150039

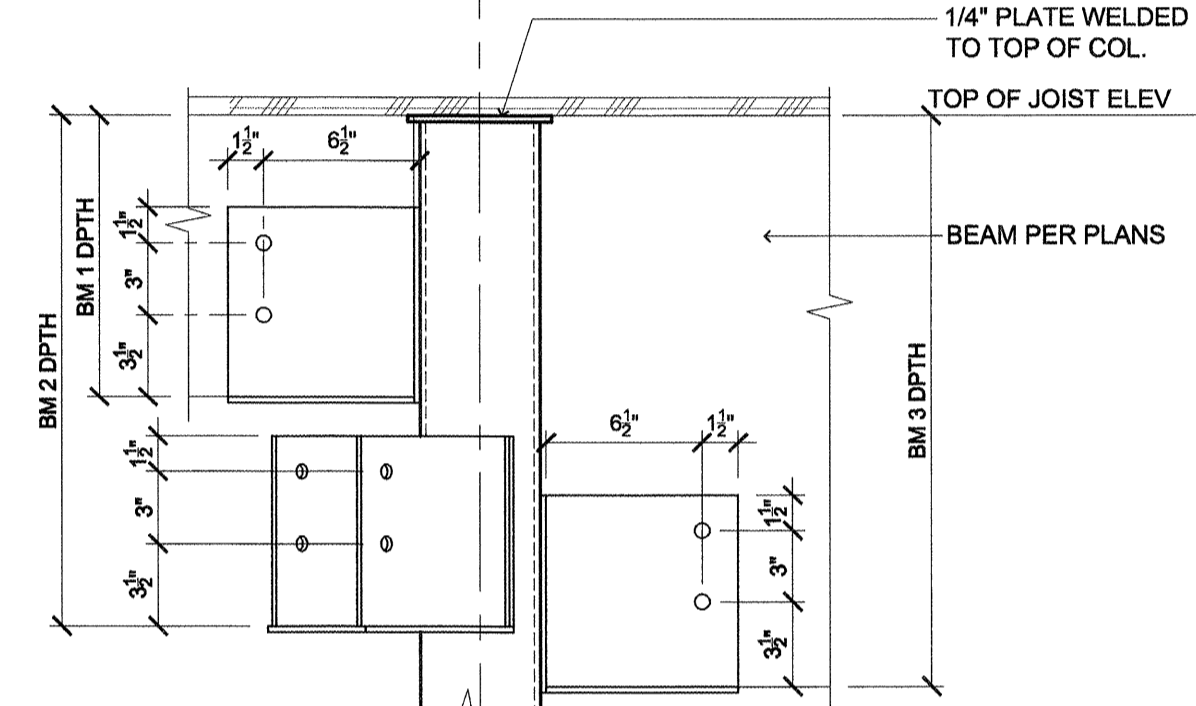
SIDE PLATE STEEL TO BE 1/4" LOW CARBON STEEL. BOT. PLATE AND FACE TO BE 3/8" LOW CARBON STL. ALL WELDS TO BE 1/4" FILLET WELDS (U.N.O.)



ISOMETRIC



PLAN

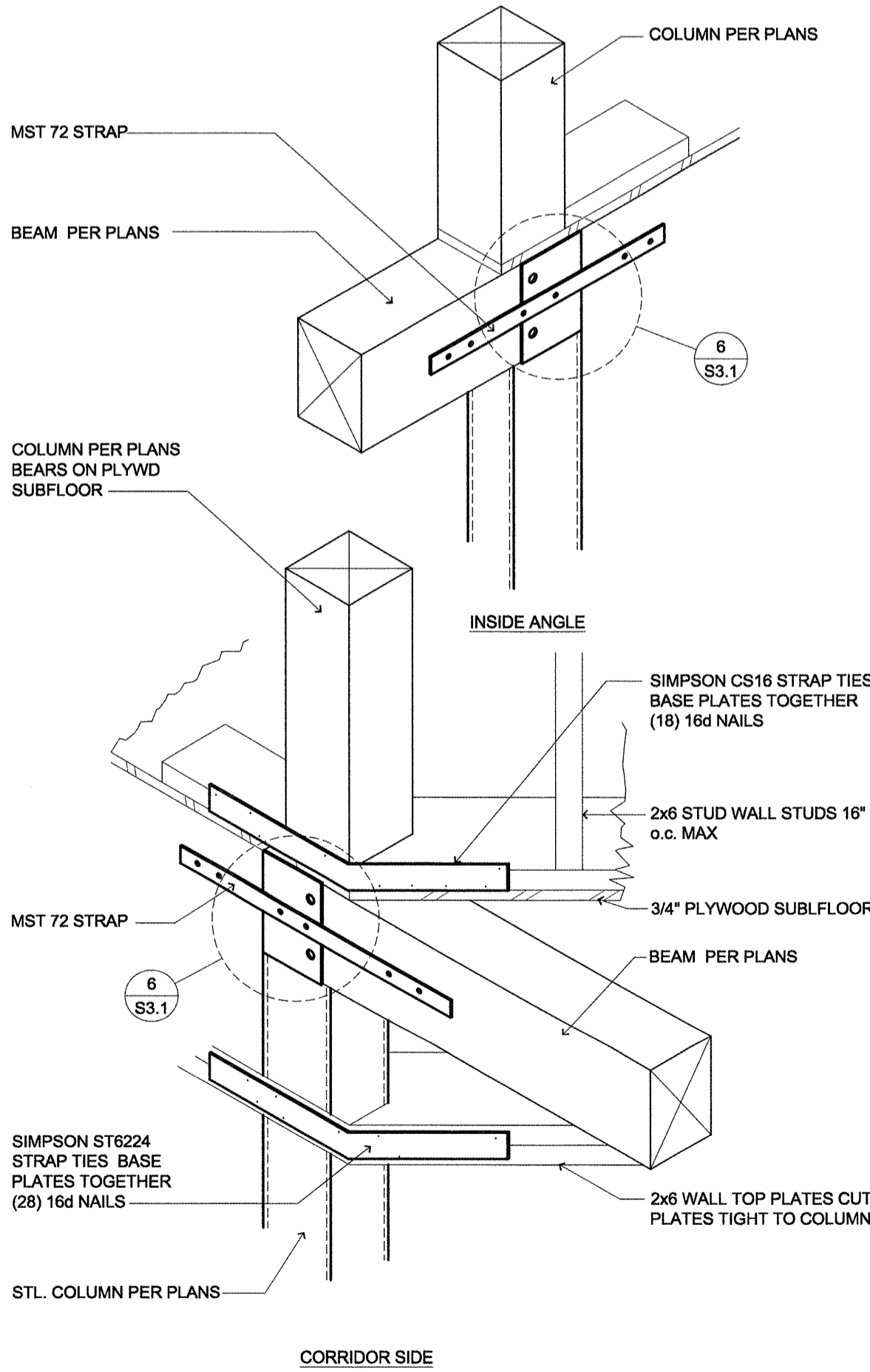


ELEVATION

10 CONNECTION DETAIL (WOOD BEAMS TO STL COLUMN) SCALE: NOT TO SCALE (1:8)

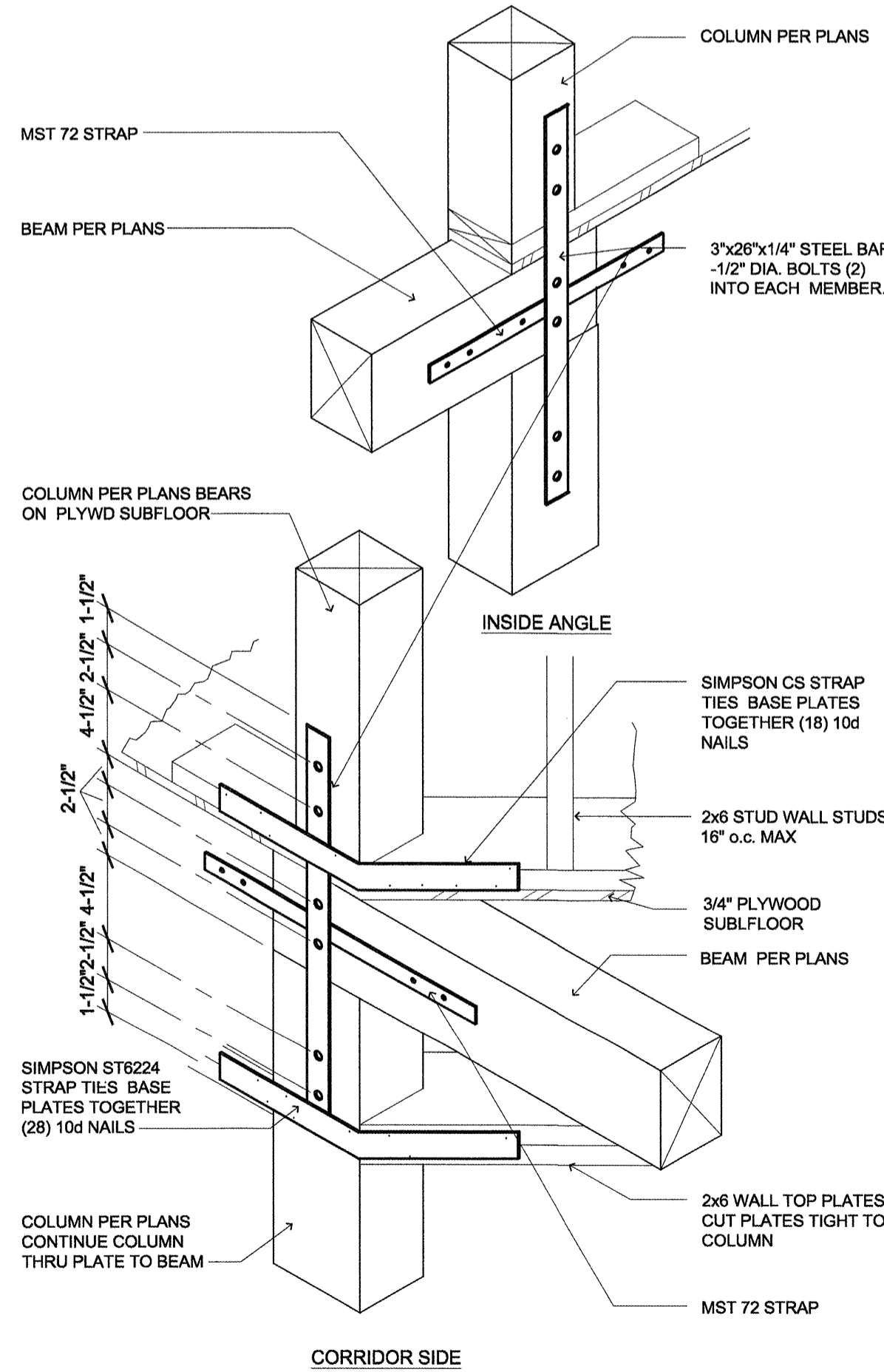
T:\06\WDP\LS\150\WDM\T1\06150030

NOT USED



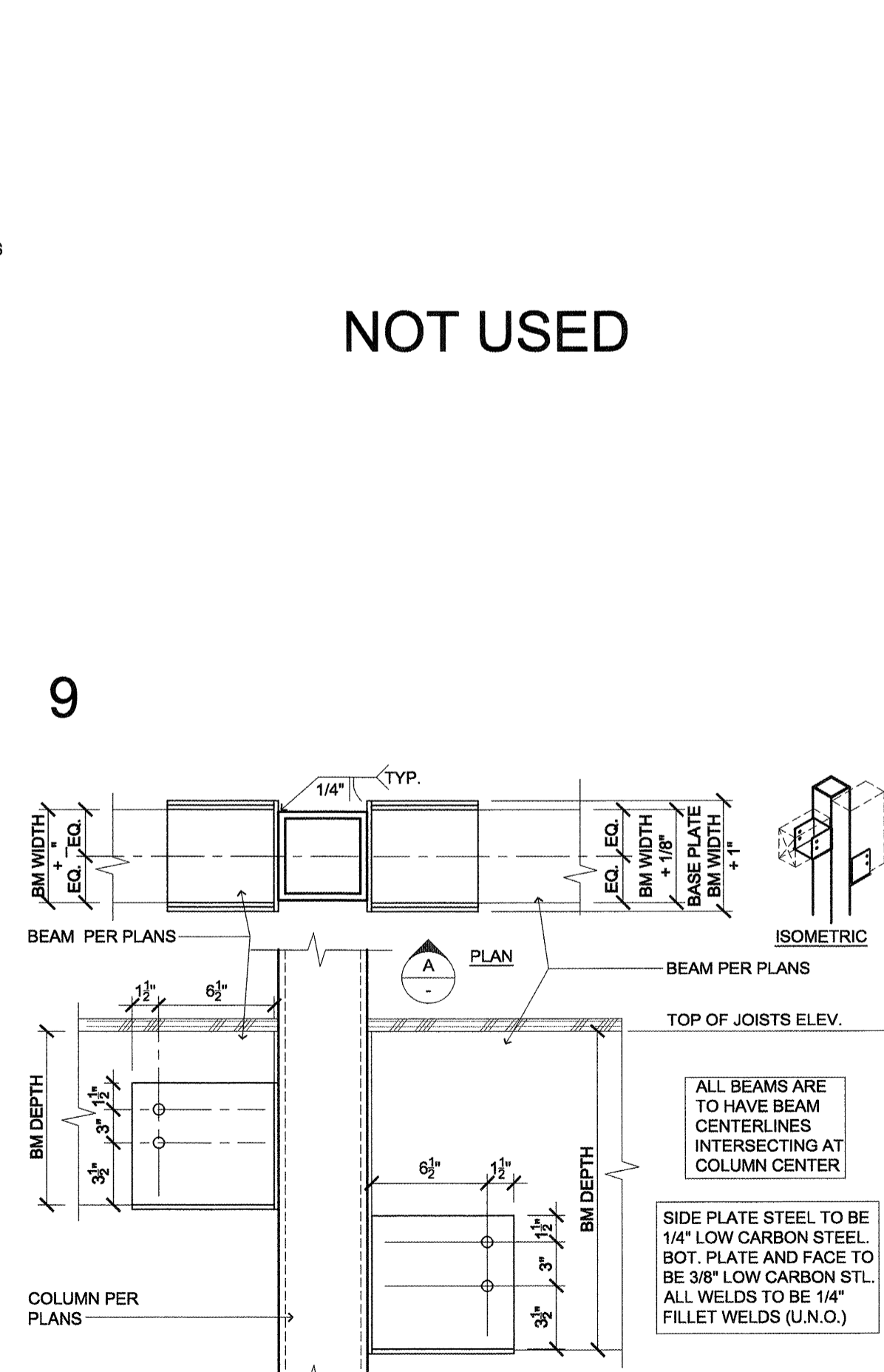
13 CONNECTION DETAIL (WOOD BEAM, STEEL COL BELOW) SCALE: N.T.S.

T:\06\WDP\LS\150\WDM\T1\06150038



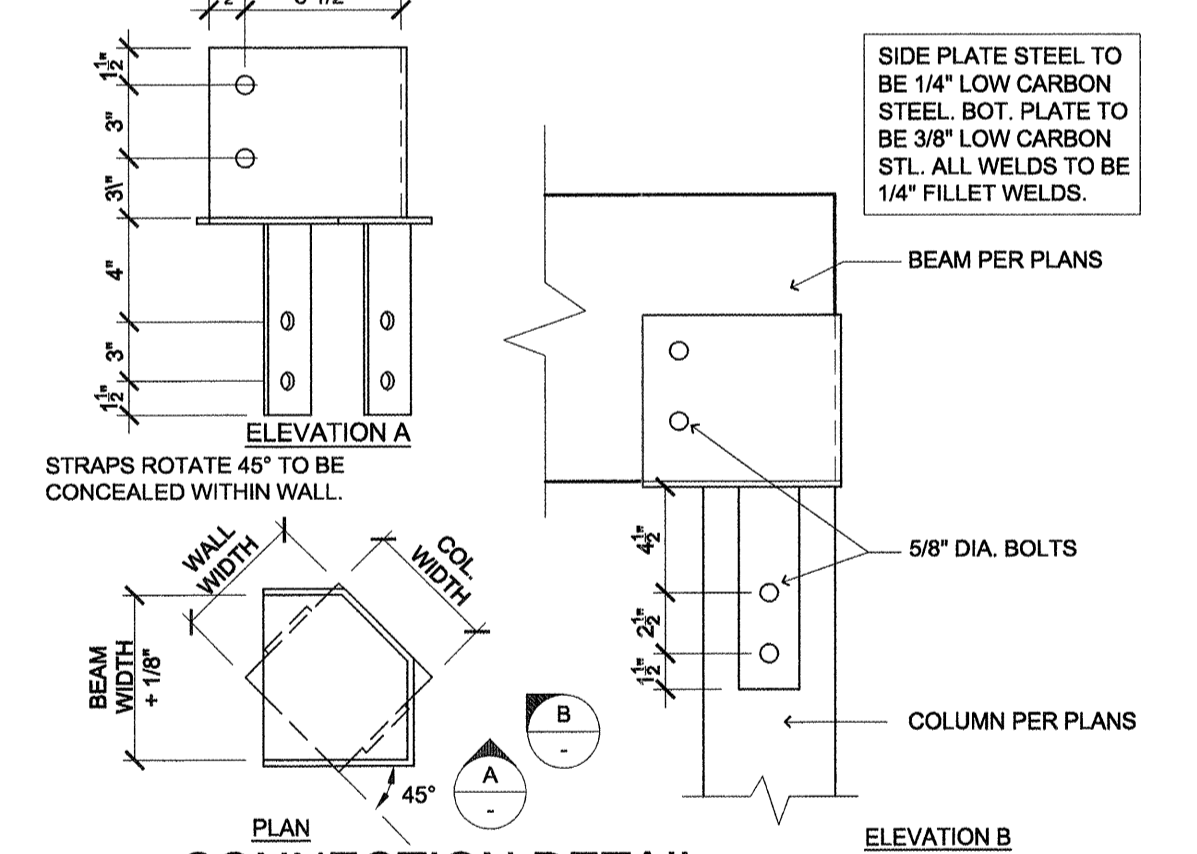
11 CONNECTION DETAIL (WOOD BEAM, WOOD COL ABOVE & BELOW) SCALE: NOT TO SCALE (1:8)

T:\06\WDP\LS\150\WDM\T1\06150039



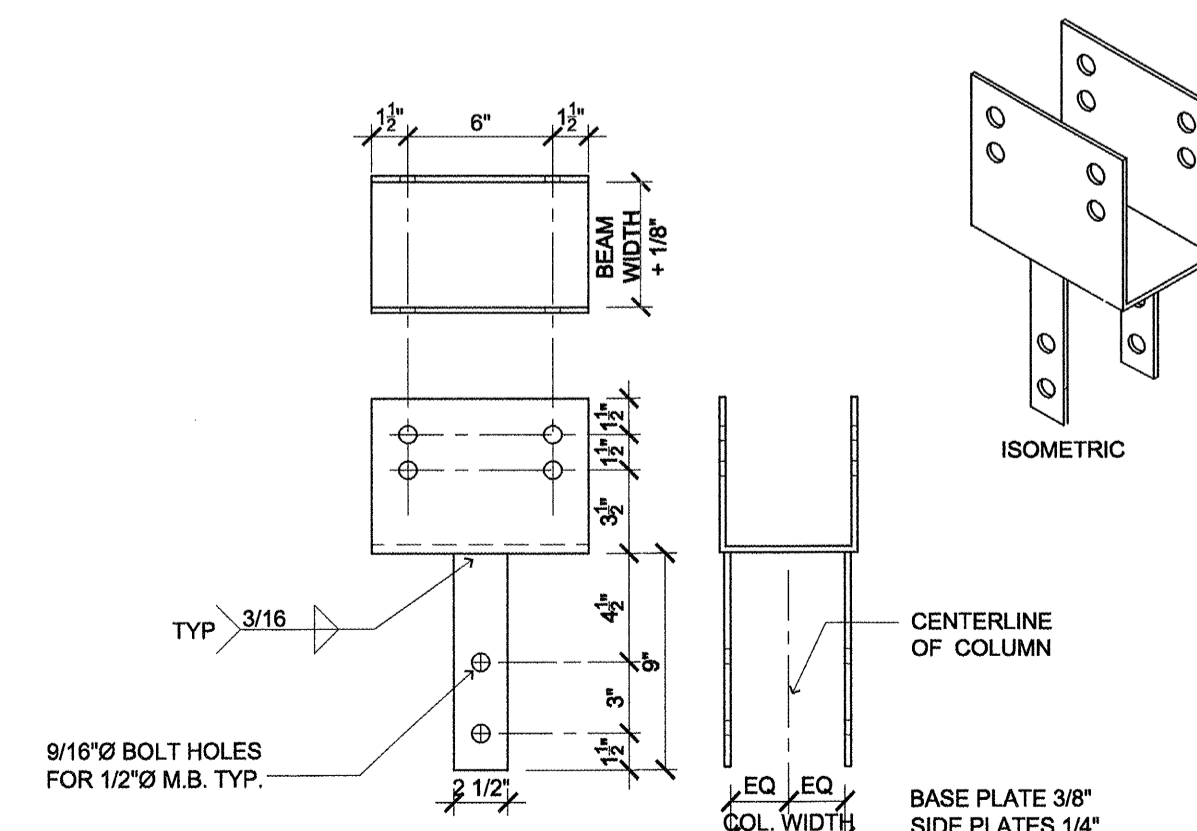
8 CONNECTION DETAIL (TWO UNEQUAL WOOD BEAMS TO STL COL) SCALE: N.T.S.

T:\06\WDP\LS\150\WDM\T1\06150034



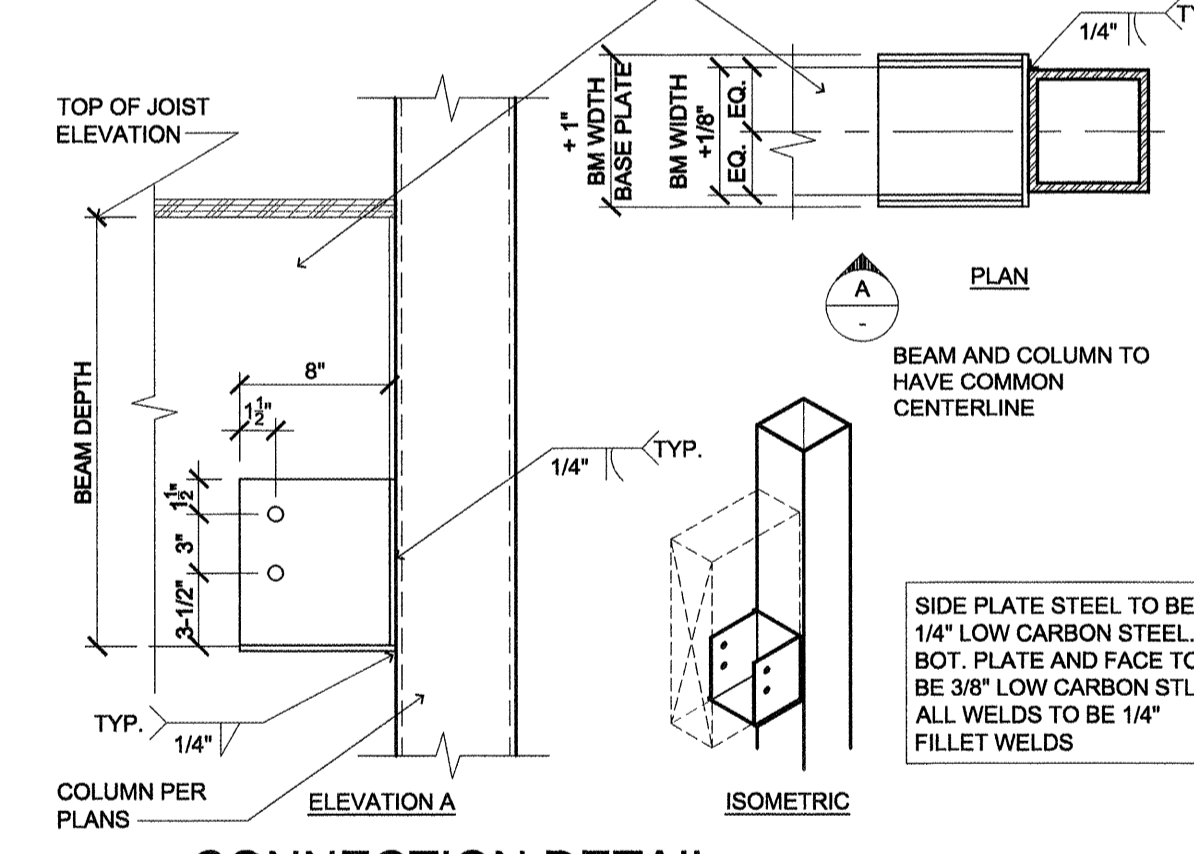
5 CONNECTION DETAIL (SKEWED BEAM ON WOOD COLUMN) SCALE: 1 1/2" = 1'-0"

T:\06\WDP\LS\150\WDM\T1\06150030



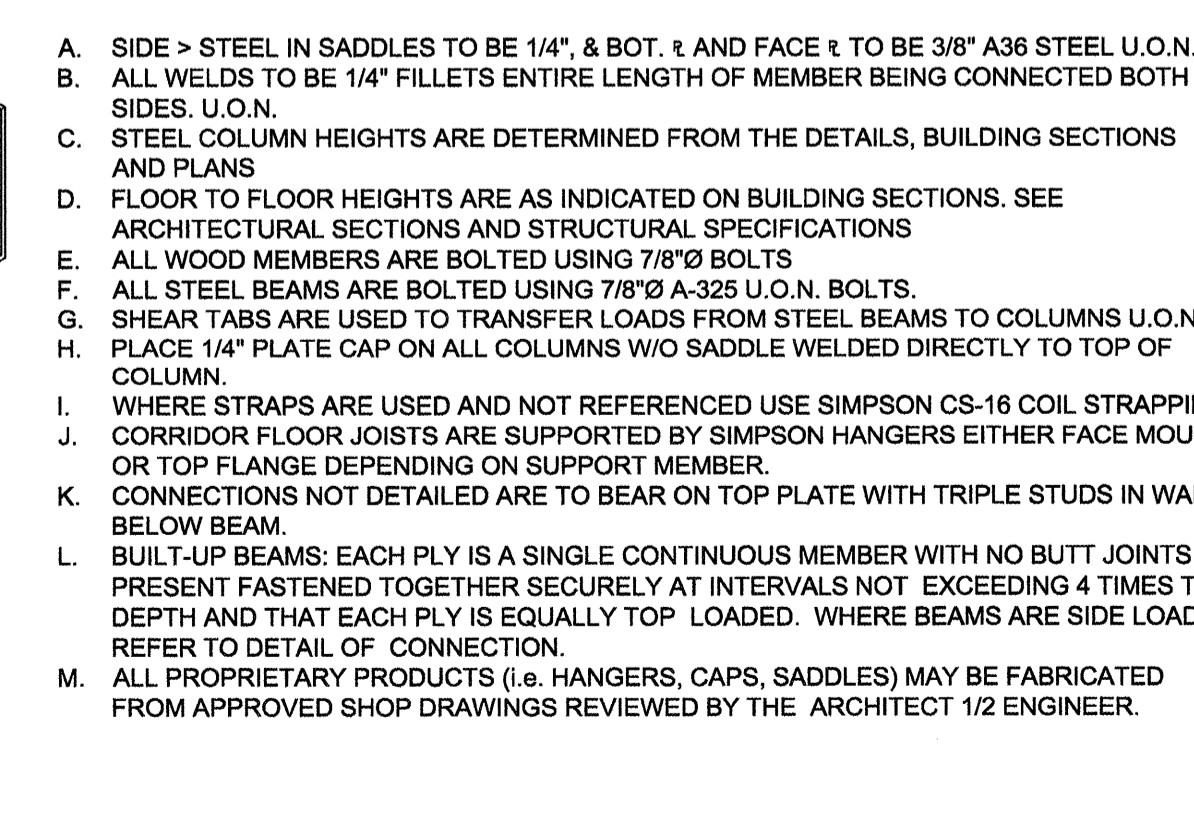
4 SINGLE BEAM SADDLE (CONTINUOUS WOOD BEAM) SCALE: 1 1/2" = 1'-0"

T:\06\WDP\LS\150\WDM\T1\06150048



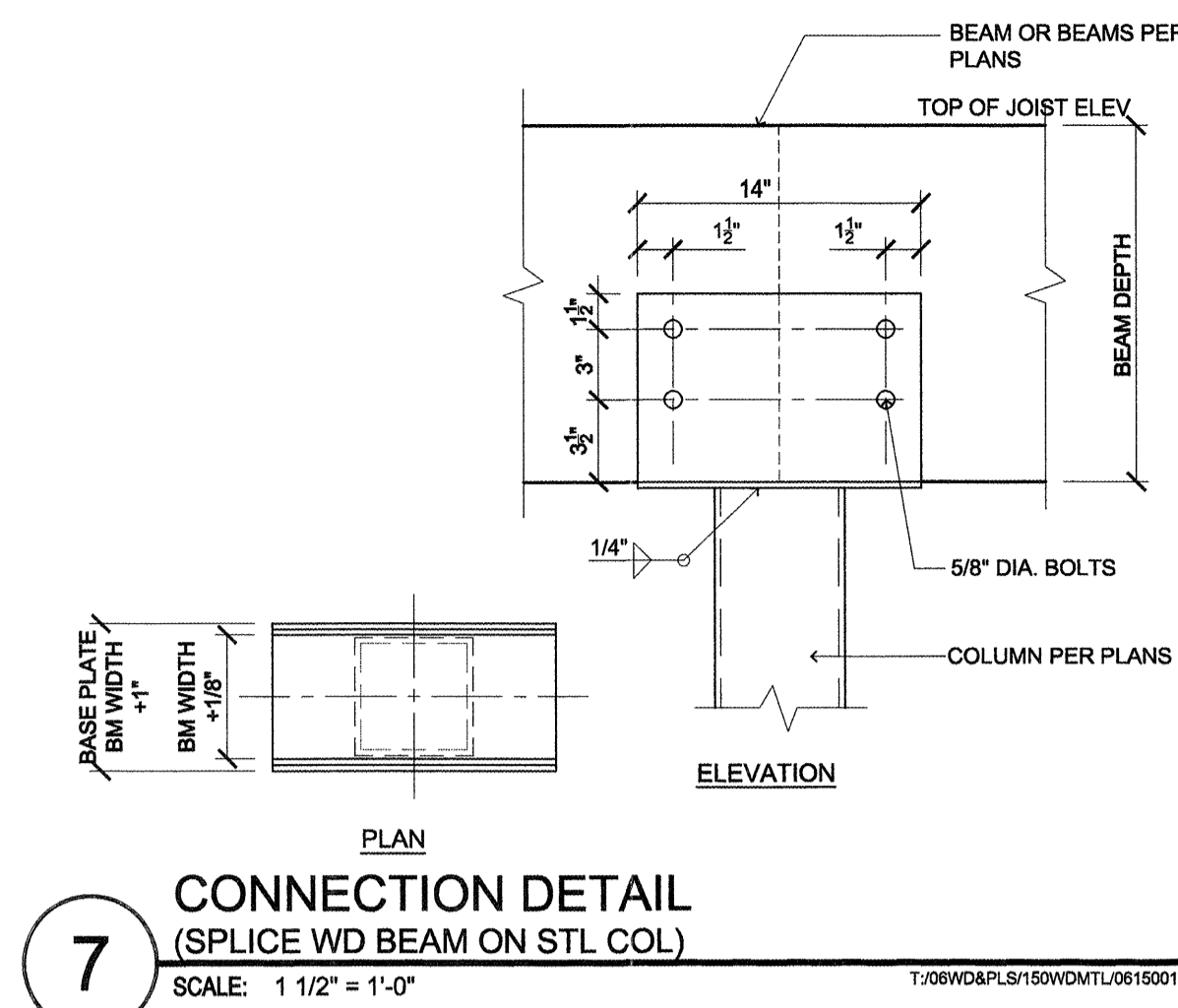
1 CONNECTION DETAIL (WOOD BEAM TO CONT STEEL COL) SCALE: N.T.S.

T:\06\WDP\LS\150\WDM\T1\06150016



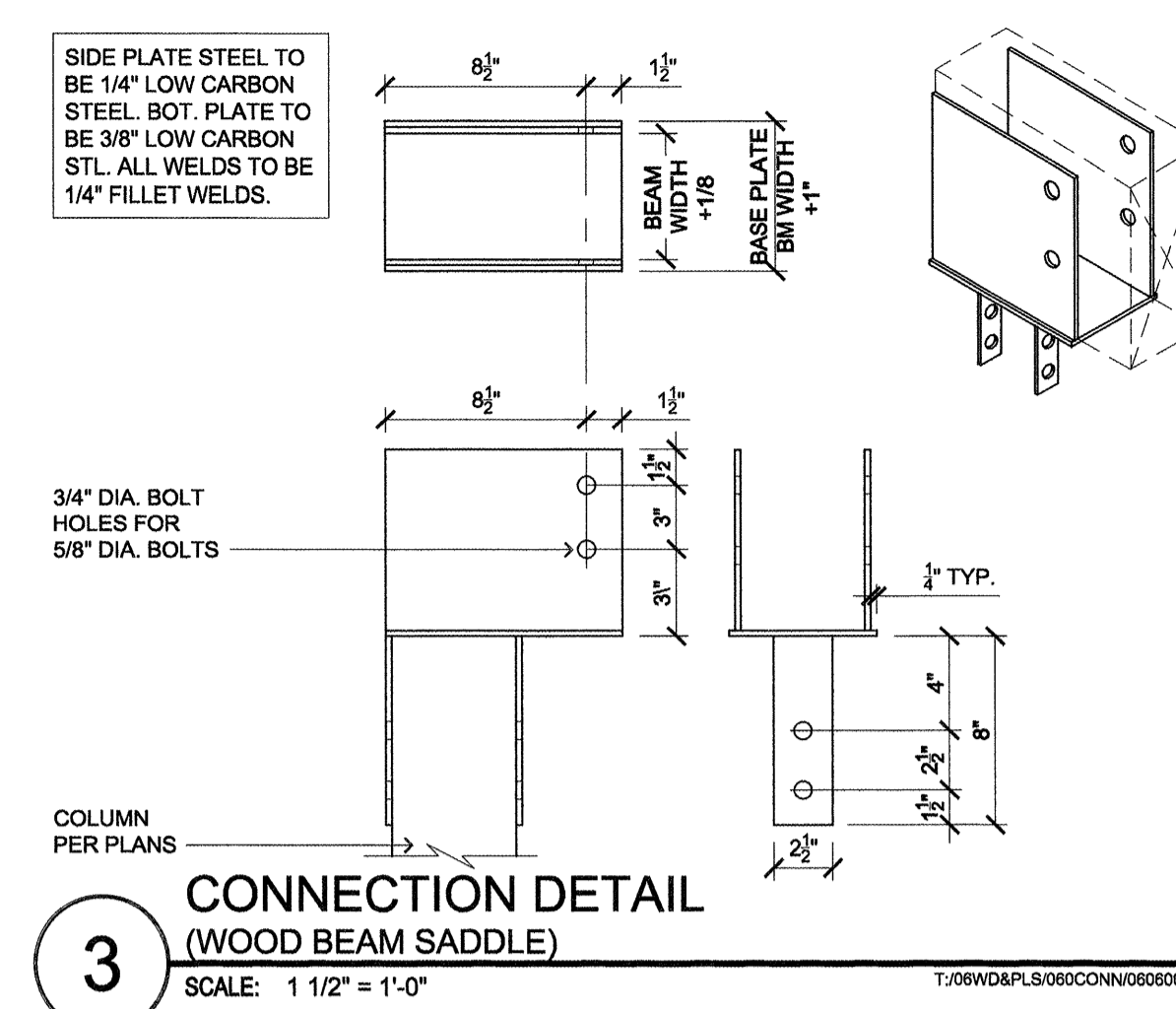
A CONNECTION NOTES SCALE: NOT TO SCALE (1:8)

T:\06\WDP\LS\150\WDM\T1\06150014



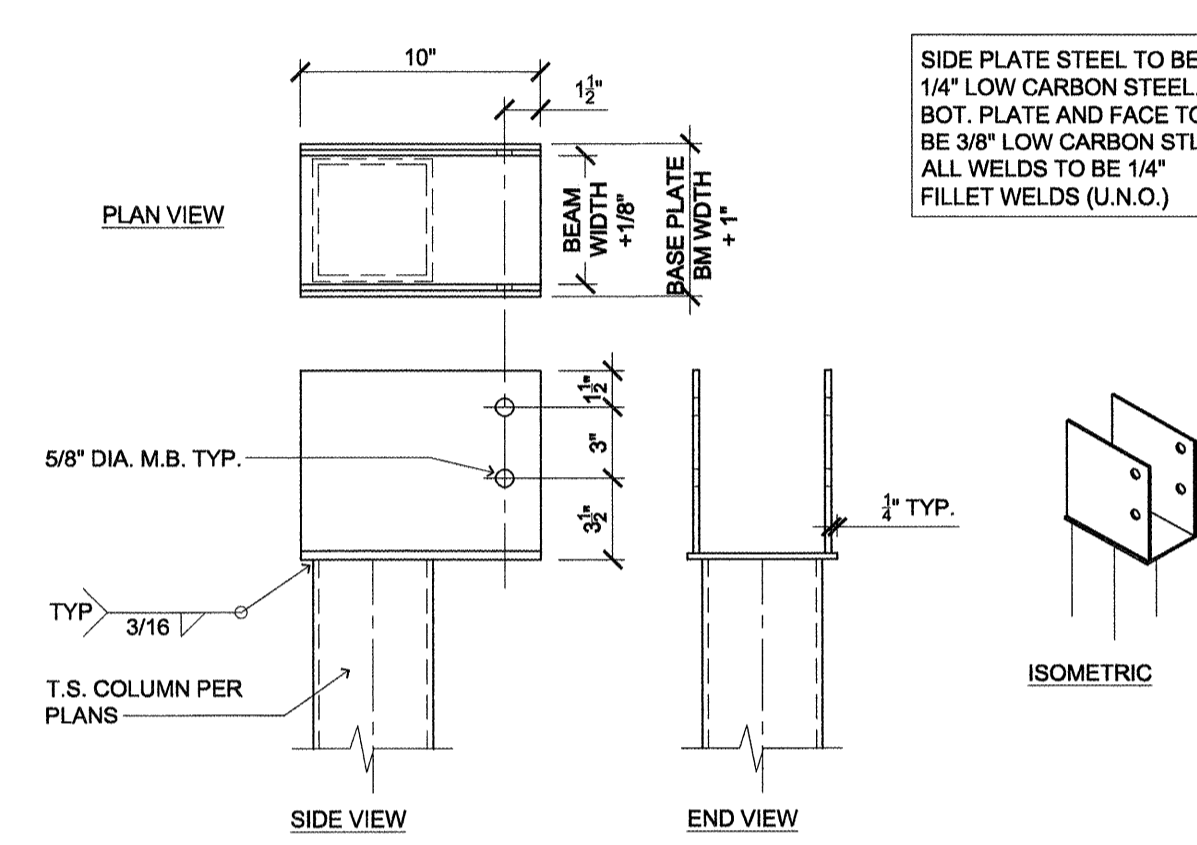
7 CONNECTION DETAIL (SPLICE WD BEAM ON STL COL) SCALE: 1 1/2" = 1'-0"

T:\06\WDP\LS\150\WDM\T1\06150012



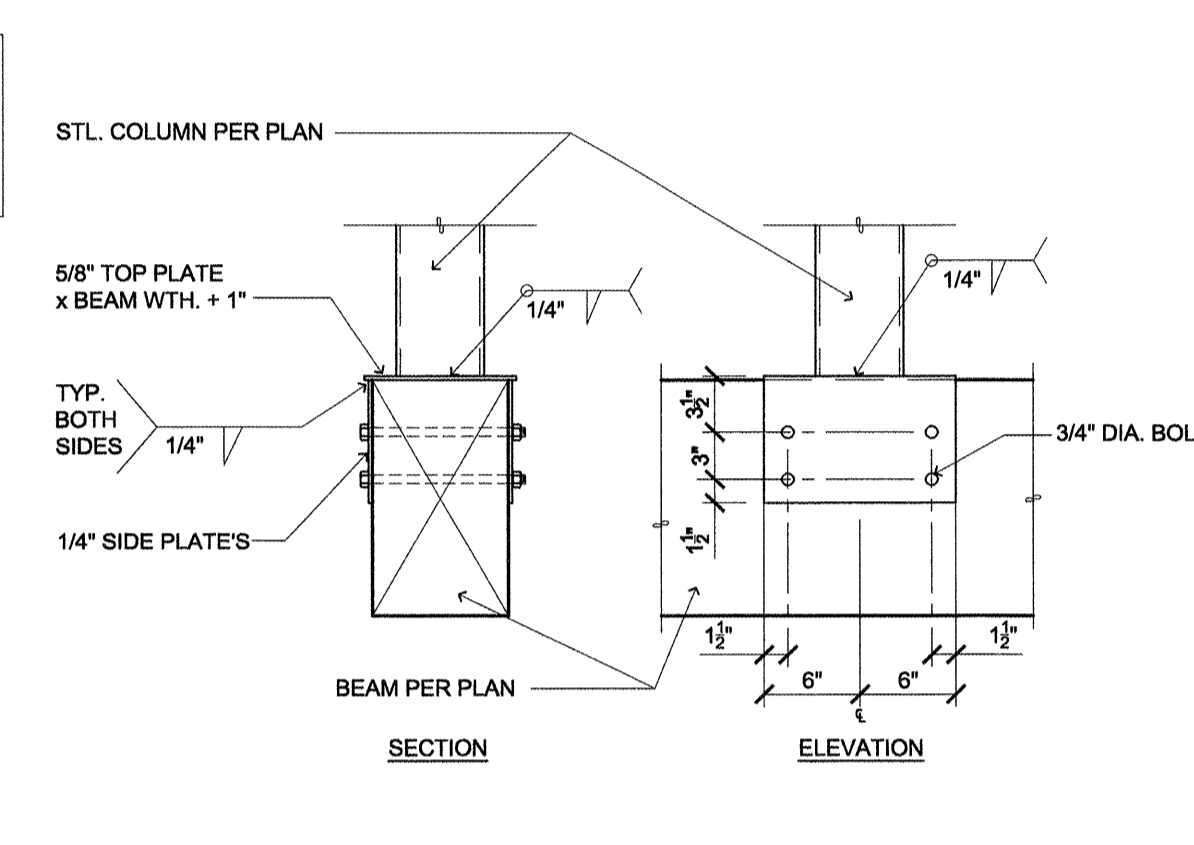
3 CONNECTION DETAIL (WOOD BEAM SADDLE) SCALE: 1 1/2" = 1'-0"

T:\06\WDP\LS\150\WDM\T1\06150013



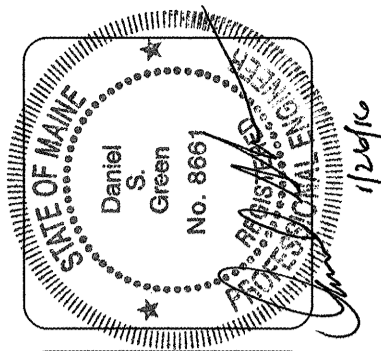
6 SINGLE BEAM SADDLE (WOOD BEAM/STEEL COLUMN) SCALE: 1 1/2" = 1'-0"

T:\06\WDP\LS\150\WDM\T1\06150023



2 CONNECTION DETAIL (STL COLUMN BEARING ON WOOD BEAM) SCALE: 1" = 1'-0"

T:\06\WDP\LS\150\WDM\T1\06150078



lenity architecture
350 W. Main, Portland, ME 04101
P: 503.399.1090 F: 503.399.0585 W: lenityarchitecture.com

COLSON AND COLSON
GENERAL CONTRACTOR, INC.
2260 MCGILCHRIST STREET SE, SUITE 200
SALEM, OREGON 97302
PHONE (503) 586-7401

PORTLAND
RETIREMENT RESIDENCE
802 OCEAN AVE. PORTLAND, MAINE 04103

CONNECTION
DETAILS

DATE
8/28/2015
REVISED DATE
9/22/2015

SHEET
S3.1

www.11x17.com 4:20 PM 11/15/2015 11:57 AM 11/15/2015 11:57 AM 11/15/2015 11:57 AM 11/15/2015 11:57 AM