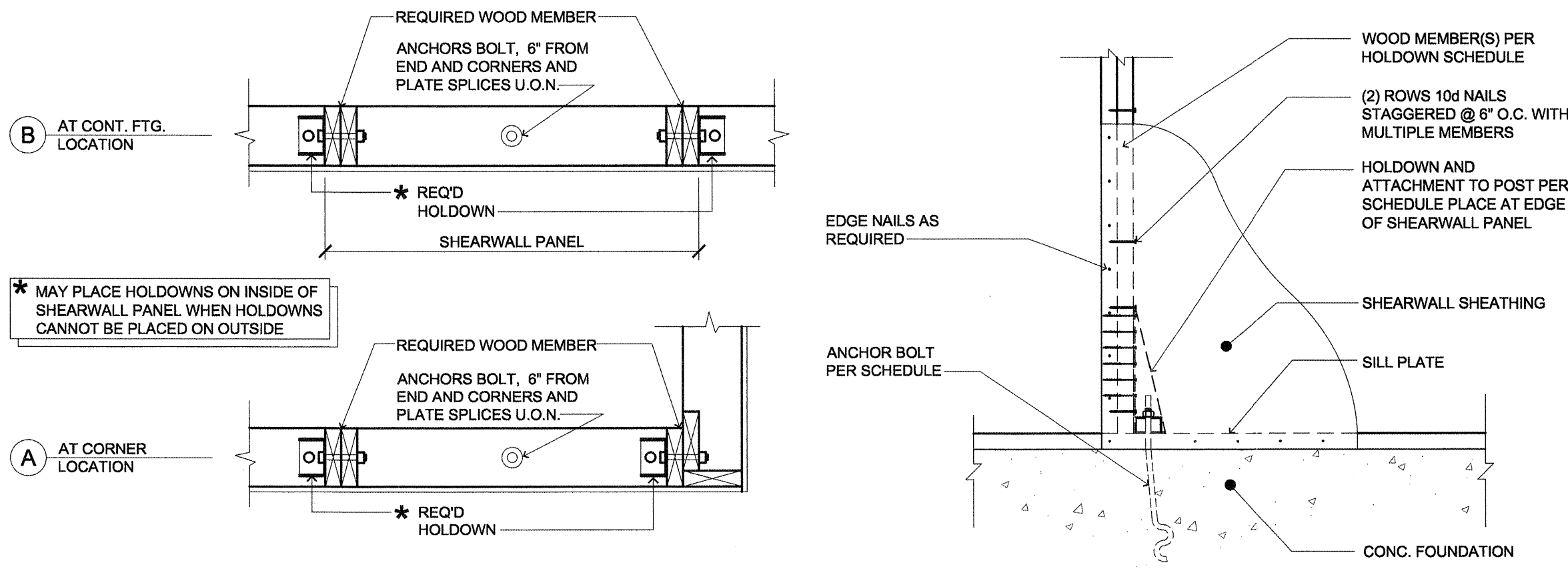


ALTERNATE HOLDOWN FOR 11A

HOLDOWN	ANCHOR BOLT	ANCHOR SIZE	EMBED. LENGTH	WOOD MEMBER	ANCHORAGE TO WOOD	REMARKS / DETAILS	ALLOW LOAD (lbs)
HDU5	A307 THREADED ROD	5/8" DIA.	10"	(2) 2x STUDS	(14) SDS 1/4" x 2-1/2" SCREWS	SEE DETAILS 1/S2.7b - 2/S2.7b USE SIMPSON SET-XP EPOXY OR EQ.	3610

NOTE:

WOOD SPEC.	
2X4	= SPF #2
3X4	= SPF #2
2X6	= SPF #2
3X6	= SPF #2
4X4 & 4X6	= SPF #2
6X6 OR LARGER	= SPF #1



ZONE 4 HOLDOWN SCHEDULE

QC	THIRD FLOOR	SECOND FLOOR	FIRST FLOOR	A307 BOLT DIA. (LNG)	EMBED. DEPTH	CONC. PAD (WxHxD)
11A			3610	3/4"	10-12"	NO PAD
11			9000	3/4"	10-12"	54x54x24 W/17#5 E.W
13			17082	1"	15-12"	80x80x24 W/11#4 E.W TOP & BTM
21	6100	6100	6100	5/8"	10-12"	42x42x18 W/9#4 E.W
23		12000	17500	1-1/8"	13-12"	102x102x24 W/9#4 E.W TOP & BTM
31	6100	6100	6100	5/8"	10-12"	42x42x18 W/9#4 E.W TOP & BTM
33	6000	12000	17500	1-1/8"	13-12"	102x102x24 W/9#4 E.W TOP & BTM
35	12000	20000	21675	1-1/4"	16-7/8"	108x108x30 W/11#5 E.W TOP & BTM

HOLDOWN NOTES EMBEDMENT DEPTHS ARE CALCULATED FOR THE SIMPSON SET-XP EPOXY SYSTEM. ALL OTHER EPOXY SYSTEMS SHALL BE APPROVED BY THE ARCHITECT OR ENGINEER BEFORE INSTALLATION.

ARCHITECT TO RECEIVE WRITTEN CONFIRMATION THAT HOLDOWNS ARE INSTALLED PER THE MANUFACTURER'S RECOMMENDATIONS.

EMBEDMENT DEPTH IS REQUIRED DEPTH MEASURED FROM TOP OF CONCRETE PAD. (EXCLUDE SLAB AND STEELWALL DEPTH).

CONCRETE PAD DIMENSIONS SHALL ACHIEVE 100% STRENGTH WITHOUT USING EDGE REDUCTION FACTORS TO ACHIEVE DESIGN UPLIFT (TENSILE RESISTANCE OF EMBEDDED ANCHOR BOLTS).

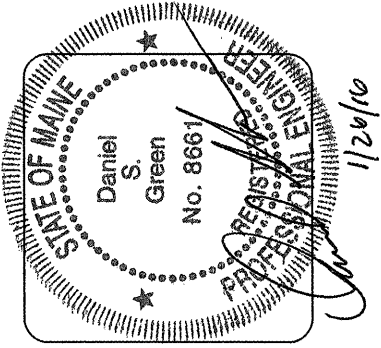
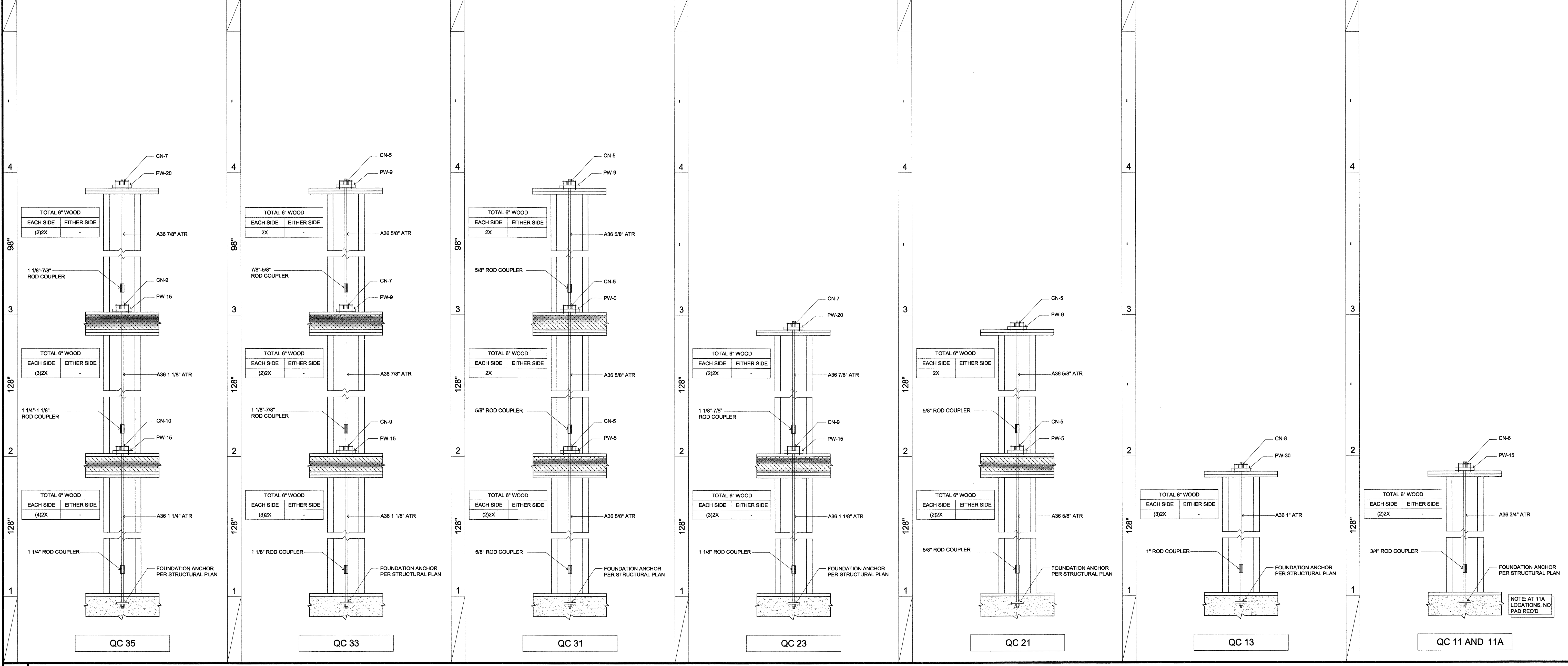
ALL HOLES DRILLED IN OR THROUGH WOOD MEMBERS FOR HOLDOWN RODS AND ANCHOR BOLTS TO BE A MINIMUM OF 1/32" TO A MAXIMUM OF 1/8" LARGER THAN THE BOLT OR ROD DIAMETER.

IF HOLDOWN FOOTING SIZE IS LARGER THAN COLUMN PAD USE HOLDOWN SCHEDULE FOOTING.

* - A193 GR B7 BOLT REQUIRED.

NOTE: SEE ANCHOR BOLT LAYOUT ON SHEET S2.7a & S2.7b FOR INSTALLATION INFORMATION.

LVL	ACCUMULATIVE LOAD DEMAND		LOAD PER LEVEL CAPACITY		LVL	ACCUMULATIVE LOAD DEMAND		LOAD PER LEVEL CAPACITY		LVL	ACCUMULATIVE LOAD DEMAND		LOAD PER LEVEL CAPACITY		LVL	ACCUMULATIVE LOAD DEMAND		LOAD PER LEVEL CAPACITY		LVL	ACCUMULATIVE LOAD DEMAND		LOAD PER LEVEL CAPACITY		LVL	ACCUMULATIVE LOAD DEMAND		LOAD PER LEVEL CAPACITY		LVL	ACCUMULATIVE LOAD DEMAND		LOAD PER LEVEL CAPACITY						
	DEMAND	CAPACITY	DEMAND	CAPACITY		DEMAND	CAPACITY	DEMAND	CAPACITY		DEMAND	CAPACITY	DEMAND	CAPACITY		DEMAND	CAPACITY	DEMAND	CAPACITY		DEMAND	CAPACITY	DEMAND	CAPACITY		DEMAND	CAPACITY	DEMAND	CAPACITY		DEMAND	CAPACITY	DEMAND	CAPACITY	DEMAND	CAPACITY			
-	-	-	-	-	-	-	-	-	-	-	-	-	-	-	-	-	-	-	-	-	-	-	-	-	-	-	-	-	-	-	-	-	-	-					
4					4					4					4					4					4								4						
3	12000	13079	12000	13079	3	6100	6300	6100	6300	3	6100	6300	6100	6300	3	6100	6300	6100	6300	3	6100	6300	6100	6300	3	6100	6300	6100	6300	3	6100	6300	6100	6300	3	6100	6300	6100	6300
2	20000	21038	8000	10300	2	12000	12600	5900	6300	2	6100	6673	0	3500	2	12000	13079	12000	13079	2	6100	6300	6100	6300	2	6100	6300	6100	6300	2	17100	17082	17100	17082	2	9000	9609	9000	9609
1	26600	26691	6600	10300	1	20000	21038	8000	10300	1	6100	6673	0	3500	1	20000	21038	8000	10300	1	6100	6673	0	3500	1	17100	17082	17100	17082	1	9000	9609	9000	9609	1	9000	9609	9000	9609



lenity architecture
350. W. 2nd St. SE, Salem, Oregon 97301
P: 503.399.1030 W: lenityarchitecture.com

COLSON AND COLSON GENERAL CONTRACTOR, INC.
2260 MCGILCHRIST STREET, SE, SUITE 200 SALEM, OREGON, 97302
PHONE (503) 586-7401

PORTLAND RETIREMENT RESIDENCE
802 OCEAN AVE., PORTLAND, MAINE 04103

ZONE FOUR QUICK CONNECT TYP. DETAILS

DATE: 8/28/2015
REVISED DATE: 9/22/2015
SHEET: S2.7b

11/20/2016 4:28 PM andrew.pdf (20/20) 11:50 AM jason - Map: h:\norman\portland\resid\2.7b holdown details\zone 4.dwg (S2.7b)