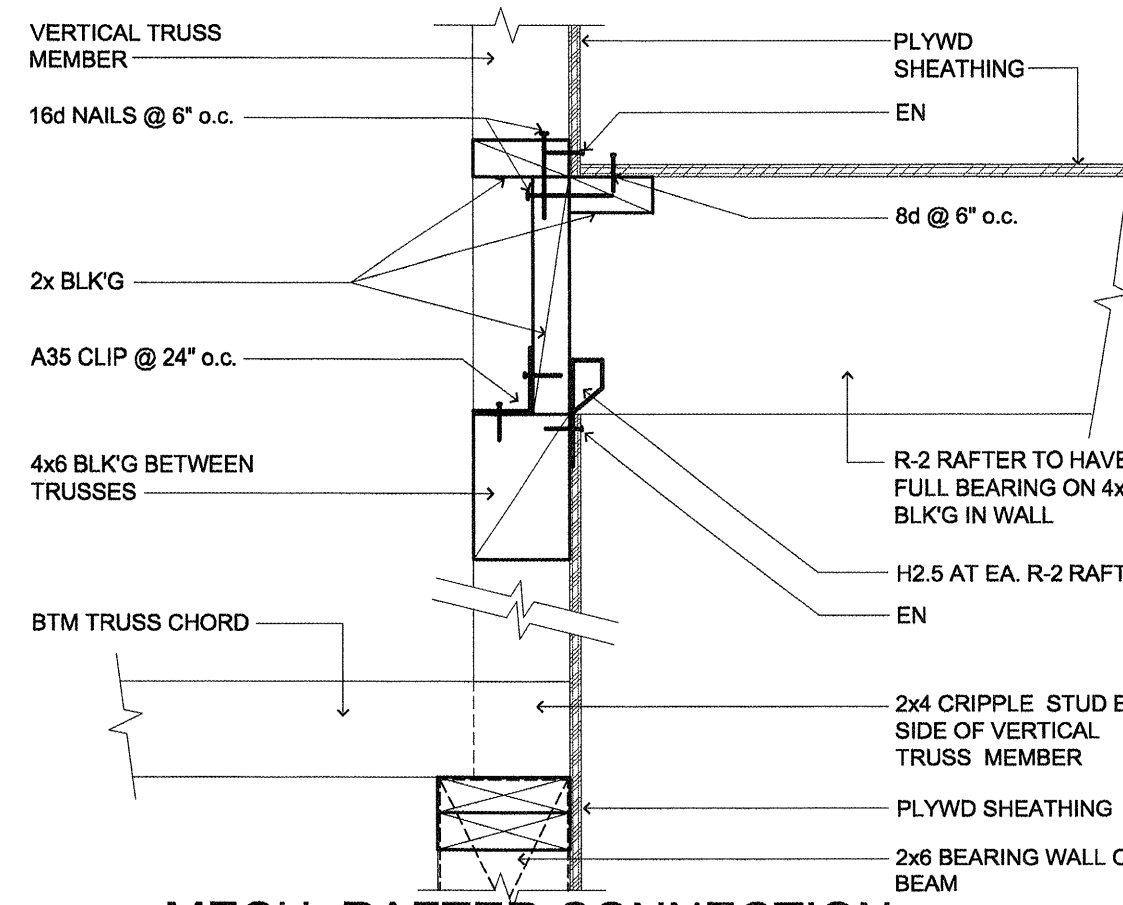


15 INTERIOR WALL (NON-BEARING)
SCALE: N.T.S. (1:16)
T:\09\WDP\SL111RFRM06111097

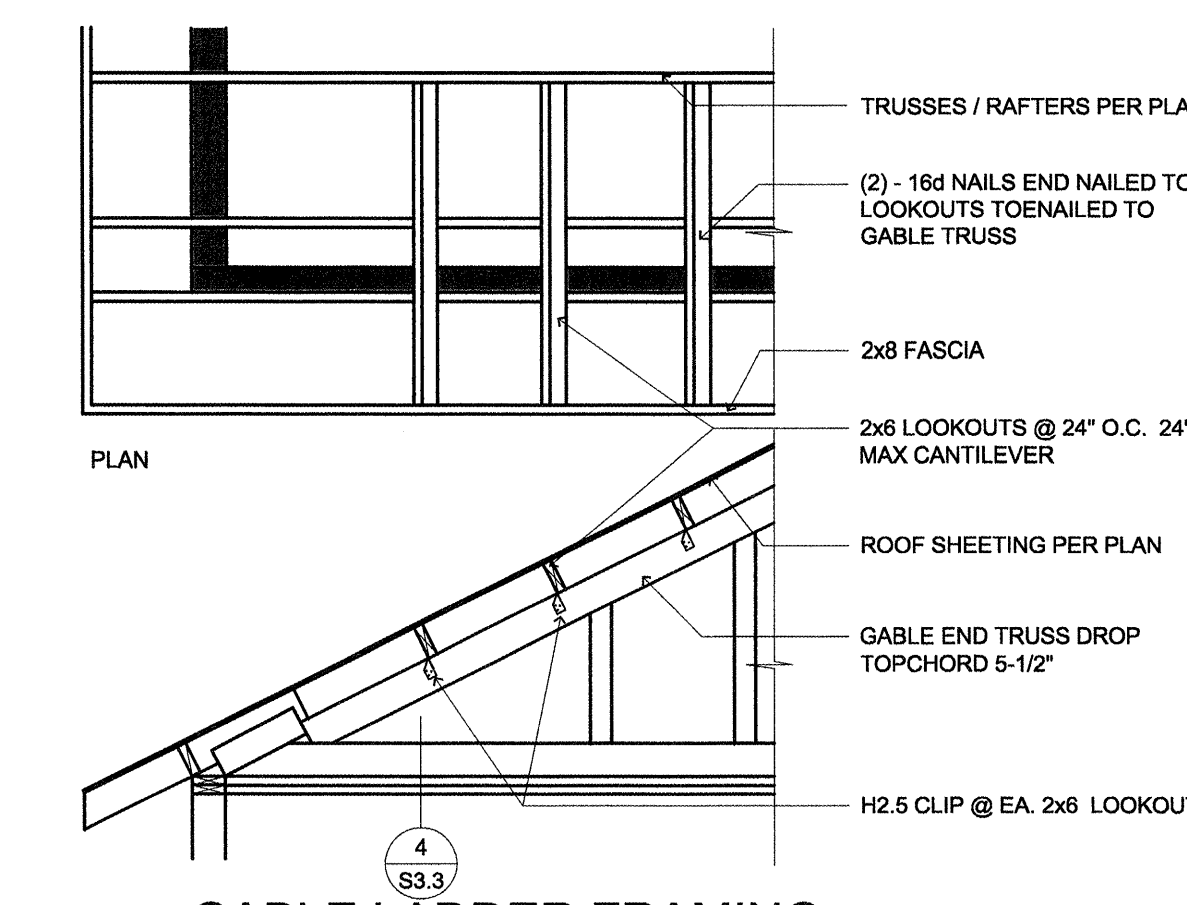
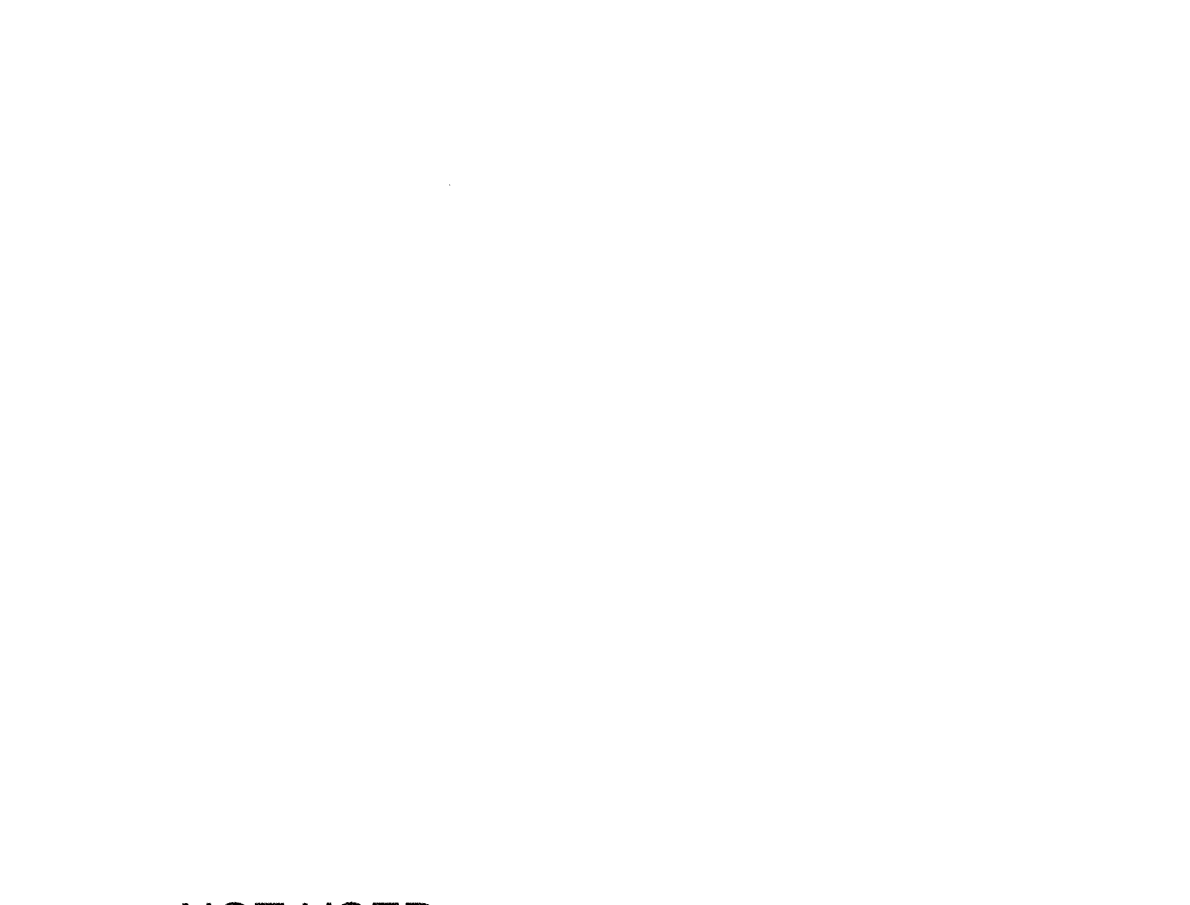
**** VALID FOR LATERAL LOADS ONLY ****

COMMON NAIL SPACING	GAUGE	EQUIVALENT O.C. SPACING OF STAPLES		
		16	15	14
6d	4"	1"	1"	1"
	6"	3-1/2"	4"	5"
	8"	5"	6"	7"
	10"	6-1/2"	8"	9-1/2"
	12"	8-1/2"	10"	12"
8d	4"	2-1/2"	3-1/2"	4"
	6"	4"	5"	6"
	8"	5-1/2"	6-1/2"	8"
	10"	6-1/2"	8"	10"
	12"	8"	10"	12"
10d	4"	2"	2-1/2"	3"
	6"	3-1/2"	3-1/2"	5"
	8"	4-1/2"	4"	6-1/2"
	10"	5-1/2"	7"	8"
	12"	6-1/2"	8"	9-1/2"

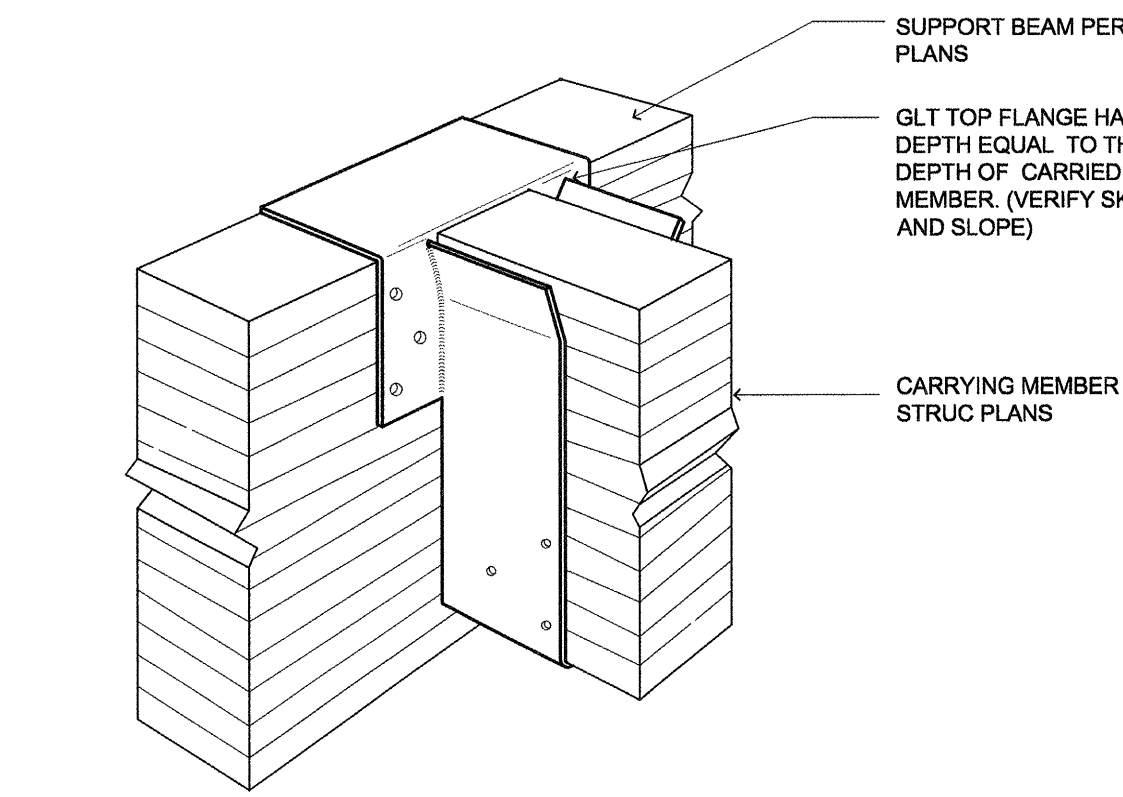
NOTES:
1. PENETRATION IS THE DEPTH OF EMBEDMENT OF THE STAPLE INTO THE MAIN MEMBER REQUIRED TO ATTAIN ITS FULL CAPACITY (SHEAR VALUE) FOR LATERAL LOADING.
2. TABLE IS ONLY INTENDED FOR USE IN DIAPHRAGM NAILING OF ROOF, FLOOR, AND WALL SHEATHING.



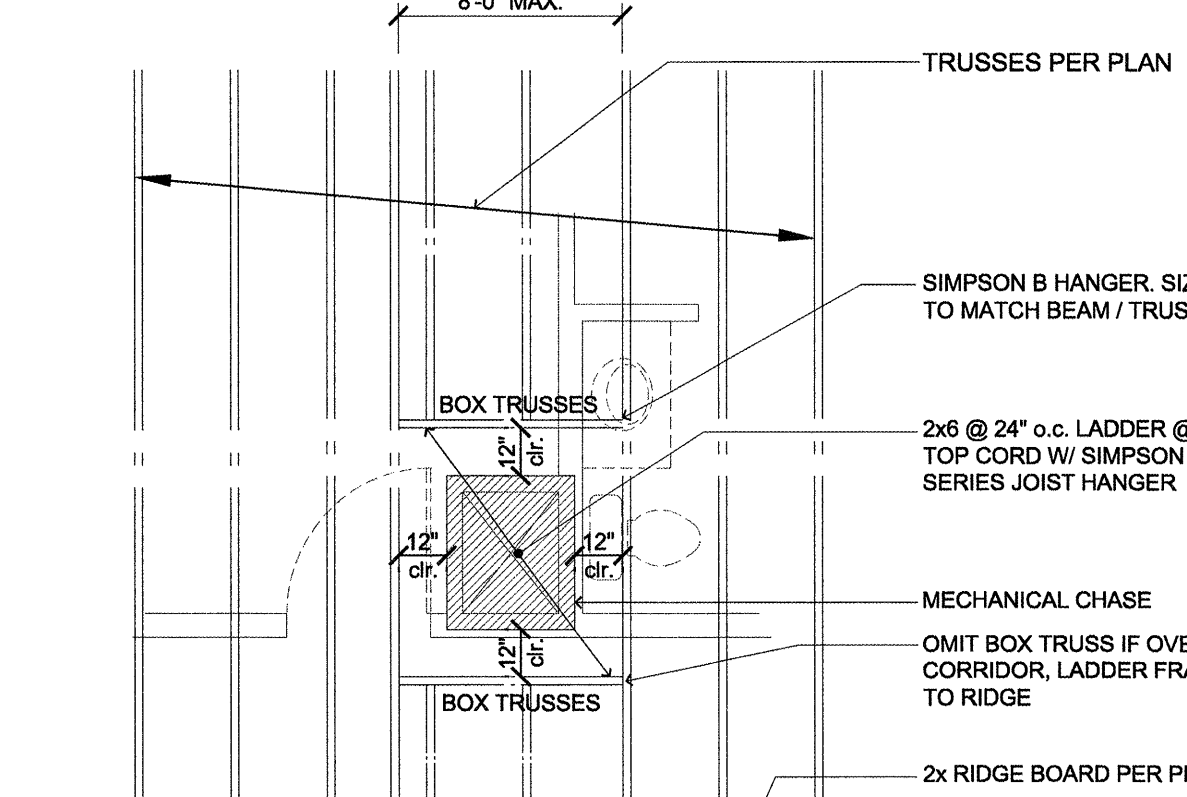
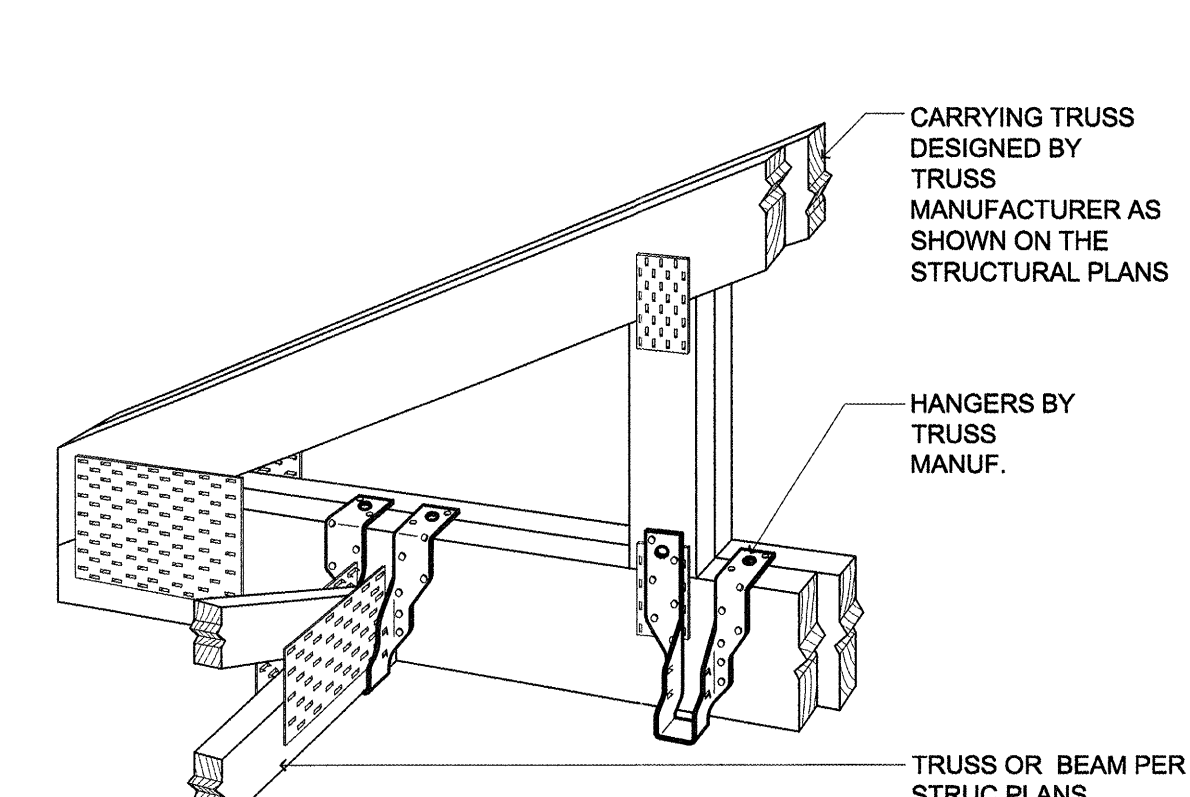
12 MECH. RAFTER CONNECTION (R-2 TO TRUSS CONNECTION)
SCALE: 1 1/2" = 1'-0"
T:\09\WDP\SL0600CONV0606006



4 GABLE LADDER FRAMING (FRAMING PLAN AND SECTION)
SCALE: N.T.S. (1:16)
T:\09\WDP\SL111RFRM06111018



11 BEAM SADDLE (TOP FLANGE SUPPORT)
SCALE: N.T.S. (1:8)
T:\09\WDP\SL0600CONV0606006



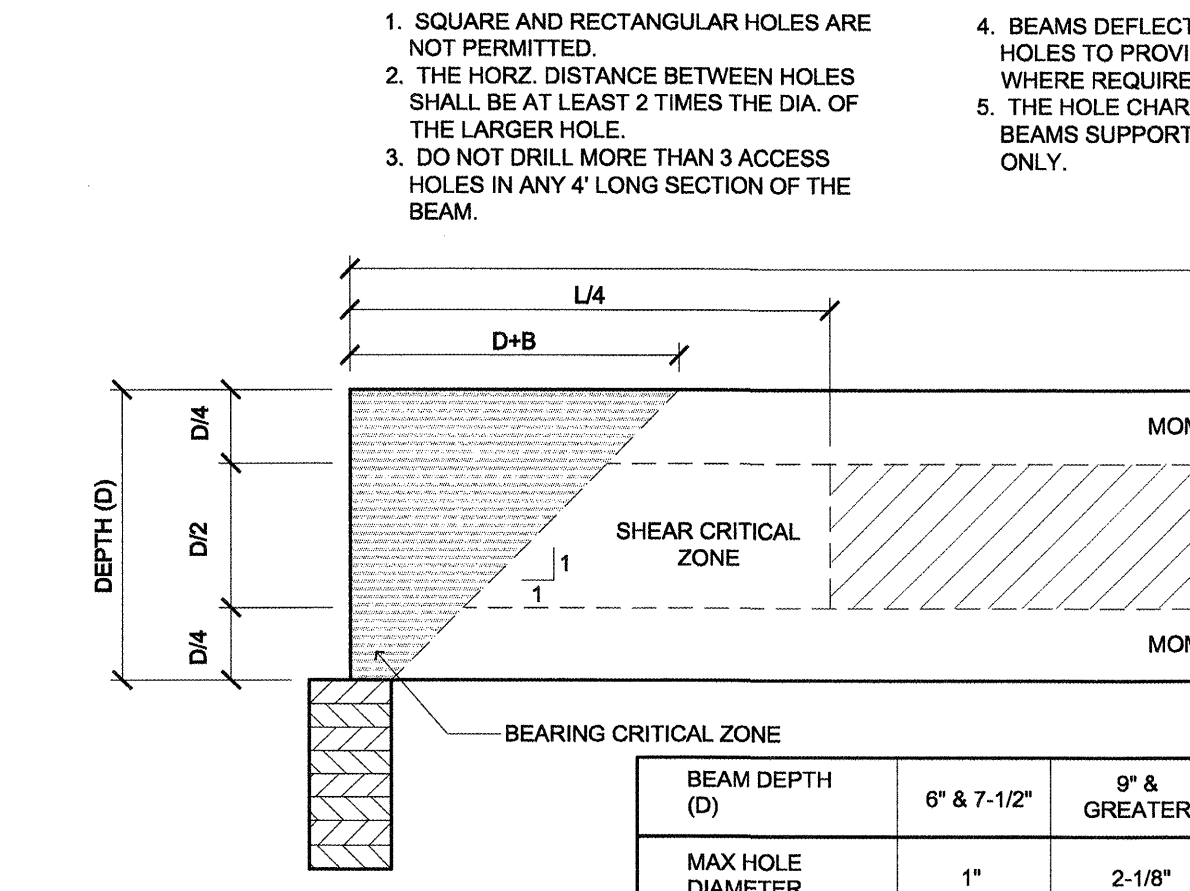
3 MECHANICAL CHASE (AT FLOOR AND ROOF FRAMING)
SCALE: N.T.S. (1:1)
T:\09\WDP\SL111RFRM06111029

17 NOT USED
SCALE: N.T.S.

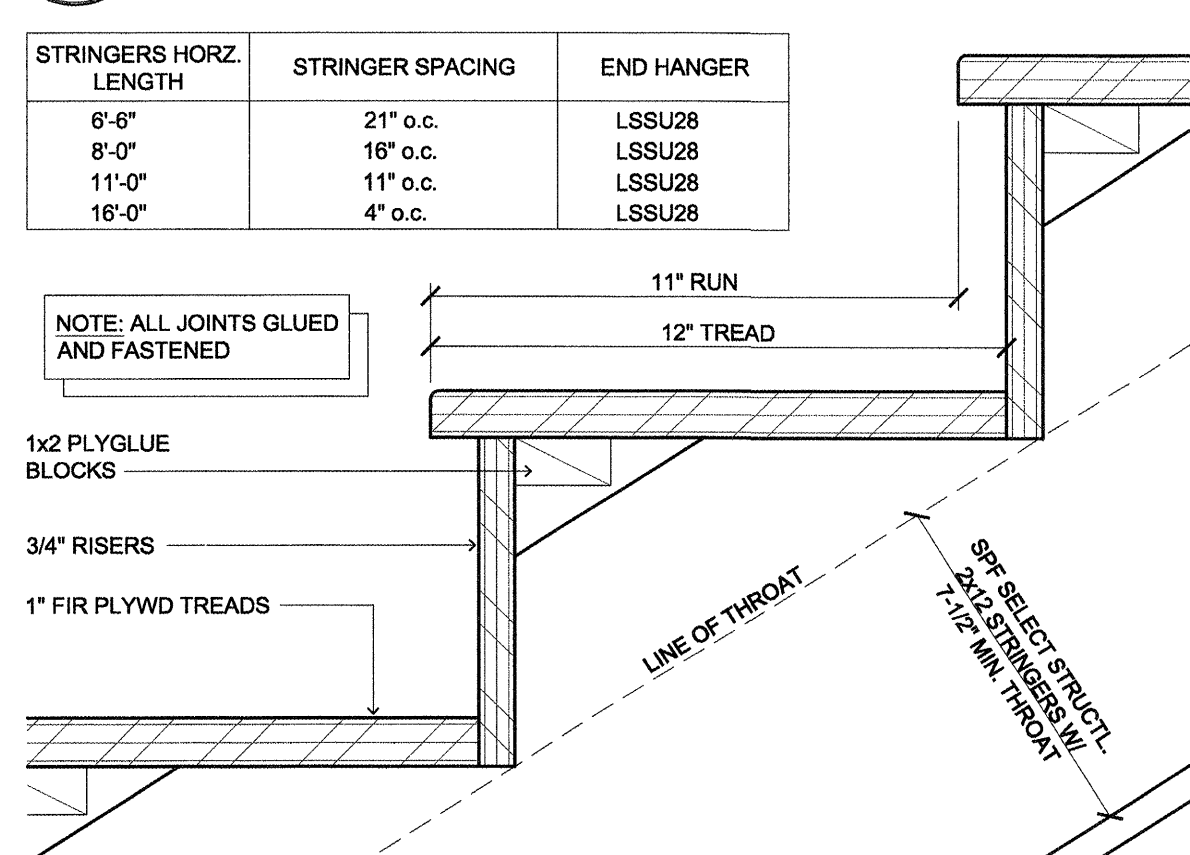
NAILING SCHEDULE		
NO.	CONNECTION	NAILING (note 1)
1	Joist to sill or girder, toenail	3-8d
2	Bridging to joist, toenail each end	2-8d
3	1x6" subflr or less to each joist, face nail	2-8d
4	Wider than 1x6" subfloor to ea. joist, face nail	3-8d
5	2" subflr to joist or girder, blind & face nail	2-16d
6	Sole plate to joist/blocking, face nail	16d-16" oc
7	Top plate to stud, end nail	2-16d
8	Stud to sole plate	4-8d toenail or 2-16d endnail 2-20d nails @ 3x sole plates
9	Double studs, face nail	16d-24" oc
10	Doubled top plates, typical face nail Double top plates, at lap splices	16d-6" oc 8-16d
11	Blocking between joists/rafters to top plate	3-8d toenail
12	Rim joist to top plate	8d @ 6" oc
13	Top plates, laps and intersections, face nail	2-16d
14	Continuous header, two pieces	16d @ 16" oc along ea. edge
15	Ceiling joists to plate, toenail	3-8d
16	Continuous header to stud, toenail	4-8d
17	Ceiling joists, laps over partitions, face nail	3-16d
18	Ceiling joist to parallel rafters, face nail	3-16d
19	Rafter to plate, toenail	3-8d
20	1" brace to each stud and plate, face nail	2-8d
21	1x8" shing or less to each bearing, face nail	2-8d
22	Wider than 1x8" shing to each bearing, face nail	3-8d
23	Built up corner studs	16d-24" oc
24	Built up girder and beams	20d @ 32" oc T&B and stagger 2-20d @ ends and at splices
25	2" planks	2-16d at each bearing
26	Wood structural panels and particleboard (note 2) Subfloor, roof and wall sheathing to framing 1/2" and less 19/32" - 1" 1-1/8" - 1-1/4" Combination subfloor-underlayment to framing 3/4" and less 7/8" - 1" 1-1/8" - 1-1/4"	6d 8d 10d 8d 8d 10d
27	Panel siding to framing 1/2" and less 5/8"	6d corrosion resist 8d corrosion resist

16 NAILING SCHEDULE (MINIMUM REQUIREMENTS)
SCALE: N.T.S.
T:\09\WDP\SL111RFRM06111013

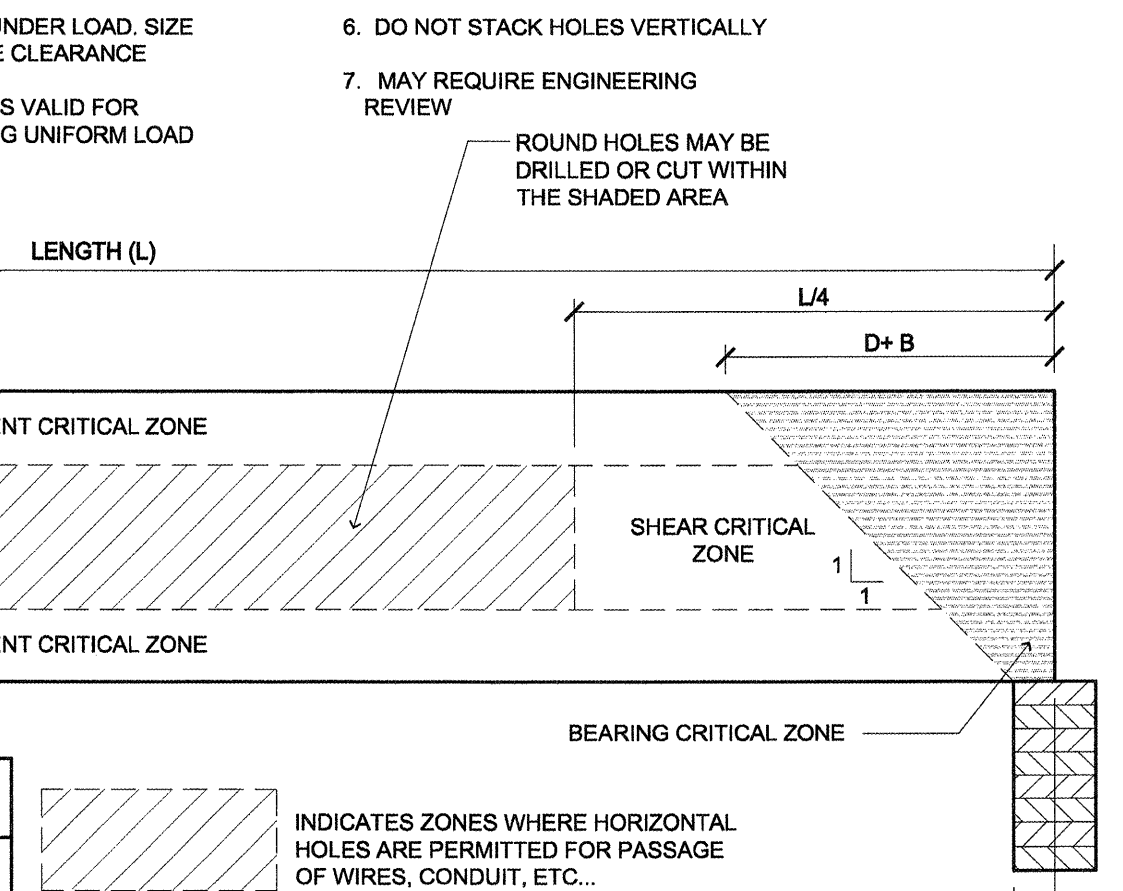
14 STAPLES AND NAILS (TABLE OF EQUIVALENT)
SCALE: N.T.S.



10 GLU-LAM BEAM (NOTCHES AND HOLES)
SCALE: 1" = 1'-0"
T:\15\MECH\500\H\AC15505102

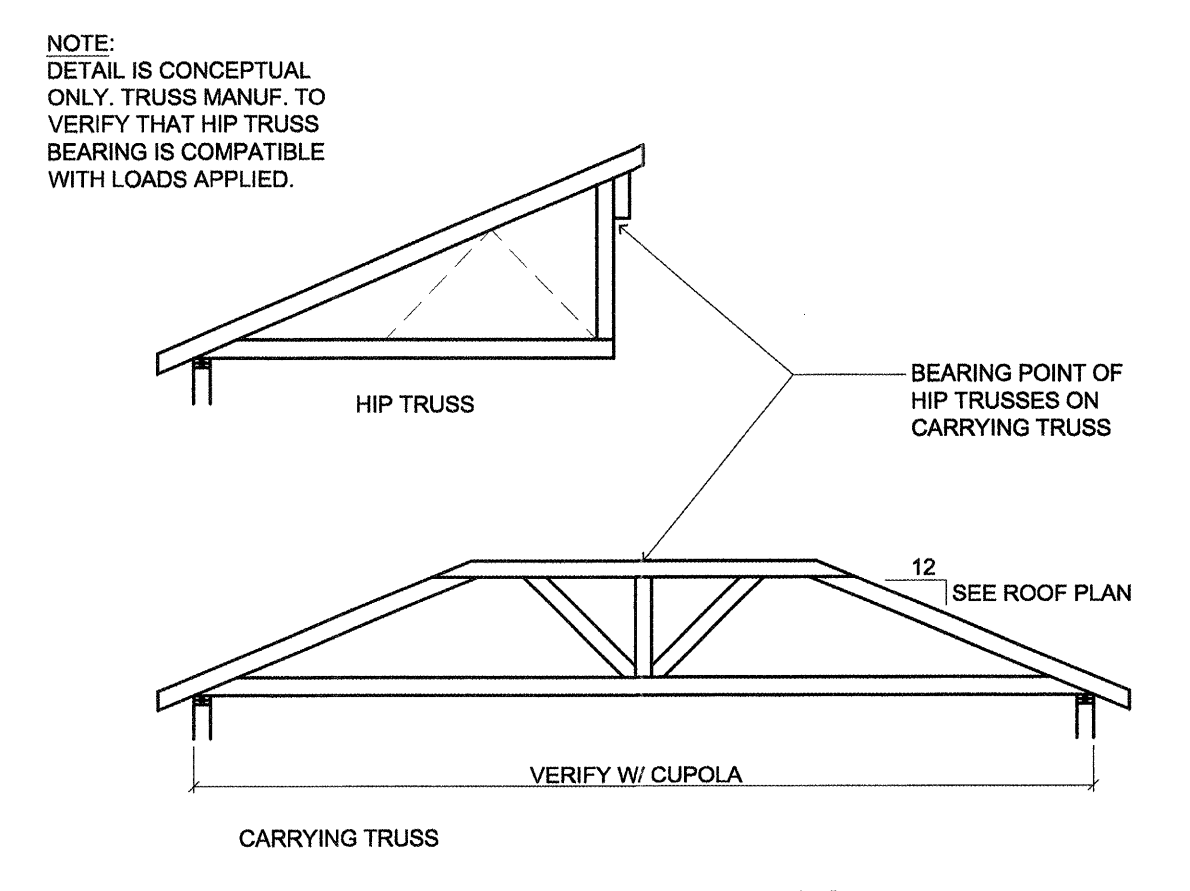


13 STAIR STRINGERS (TYPICAL STAIR TREAD)
SCALE: N.T.S. (1:4)
T:\09\WDP\SL111RFRM06111004

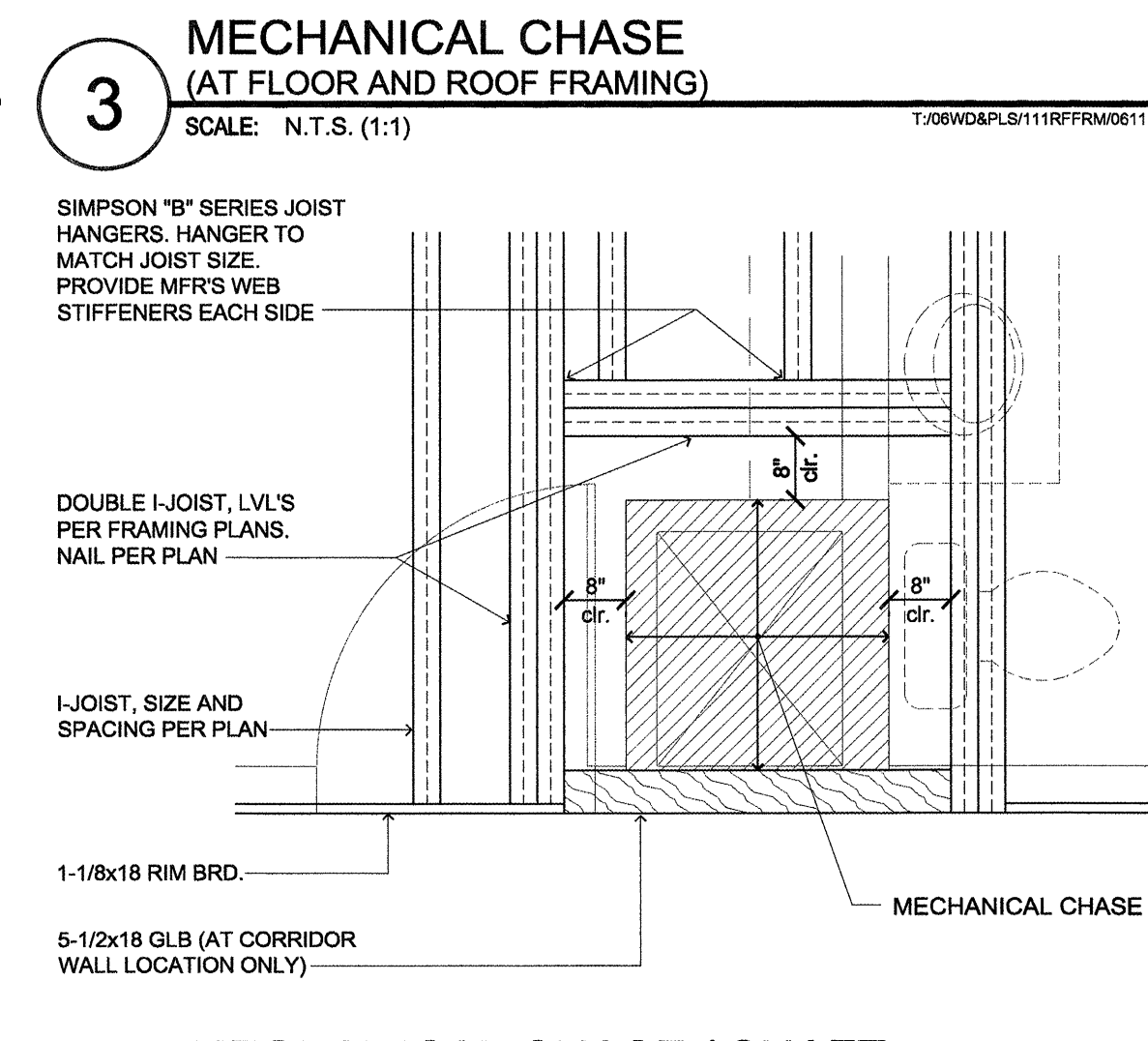


9 DECK DETAIL (@ TEE SUITES)
SCALE: 1" = 1'-0"
T:\09\WDP\SL125WDECK06125015

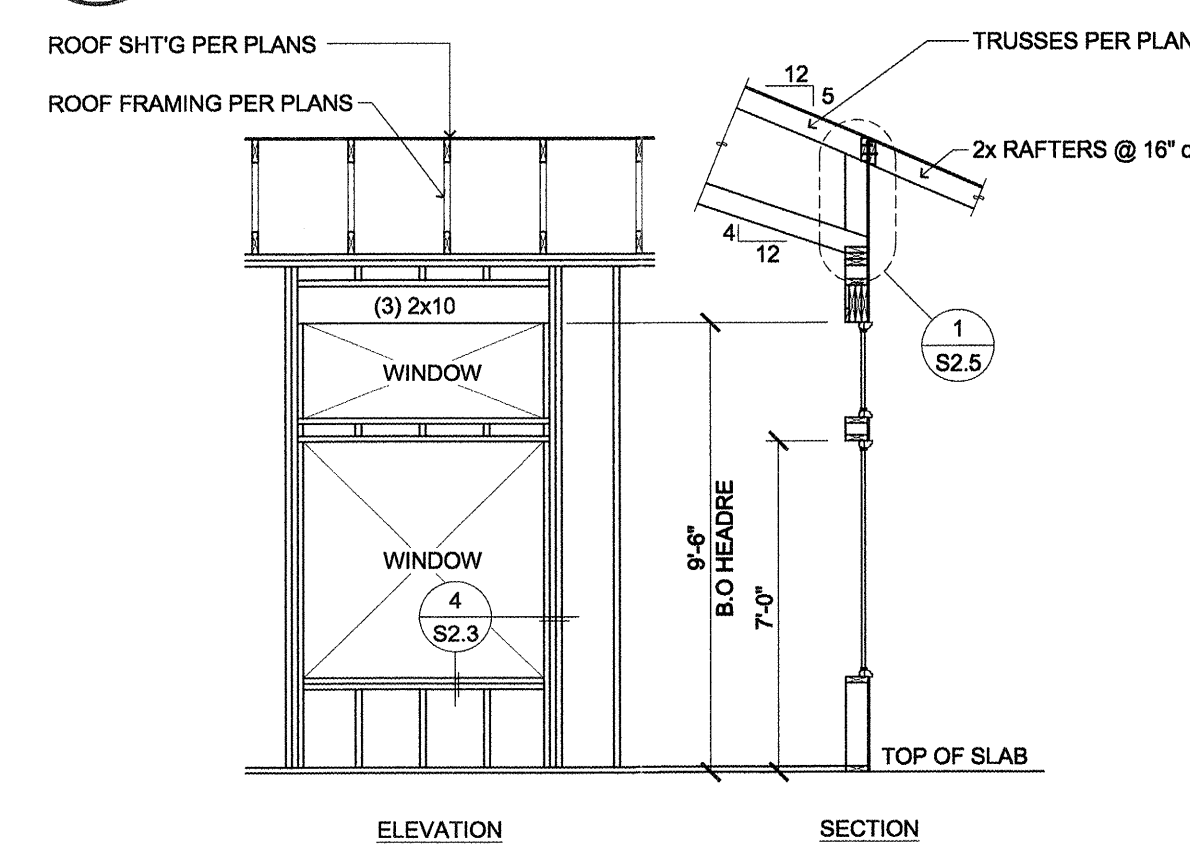
7 ROOF FRAMING
SCALE: N.T.S. (1:16)
T:\09\WDP\SL111RFRM06111009



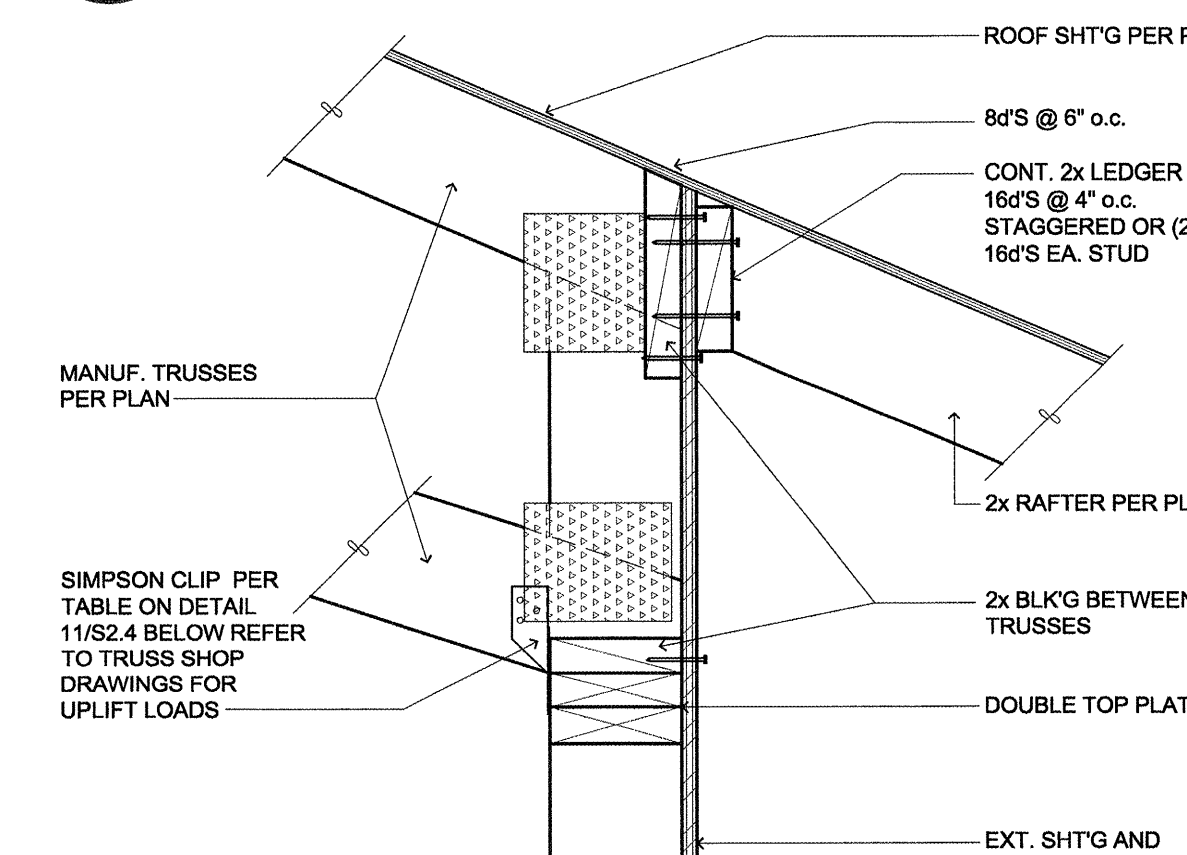
6 CUPOLA CARRYING TRUSS (TRUSS CONFIGURATION)
SCALE: NOT TO SCALE (1:96)
T:\09\WDP\SL111RFRM06111004



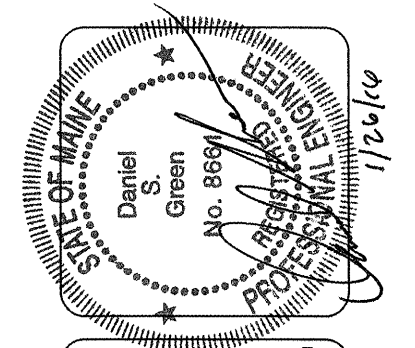
2 MECHANICAL CHASE / SHAFT (FLOOR FRAMING LAYOUT)
SCALE: N.T.S. (1:24)
T:\09\WDP\SL111RFRM06111022



5 DINING RM. EXT. WALL SECT. (HVAC DUCT PENETRATION)
SCALE: N.T.S.
T:\09\WDP\SL111RFRM06111006



1 CONNECTION (RAFTERS TO TRUSS)
SCALE: N.T.S. (1:8)
T:\09\WDP\SL111RFRM06111010



lenity architecture

3150 Wells Court, SE, Salem, Oregon 97301
P: 503 399 1030 F: 503 399 0565 W: lenityarchitecture.com

COLSON AND COLSON
GENERAL CONTRACTOR, INC.
22860 MCGILCHRIST STREET, SE, SUITE 200
SALEM, OREGON, 97302
PHONE (503) 586-7401

PORTLAND
RETIREMENT RESIDENCE
802 OCEAN AVE., PORTLAND, MAINE 04103

STRUCTURAL
DETAILS

DATE: 8/28/2015

REVISED DATE: 9/22/2015

SHEET: S2.5