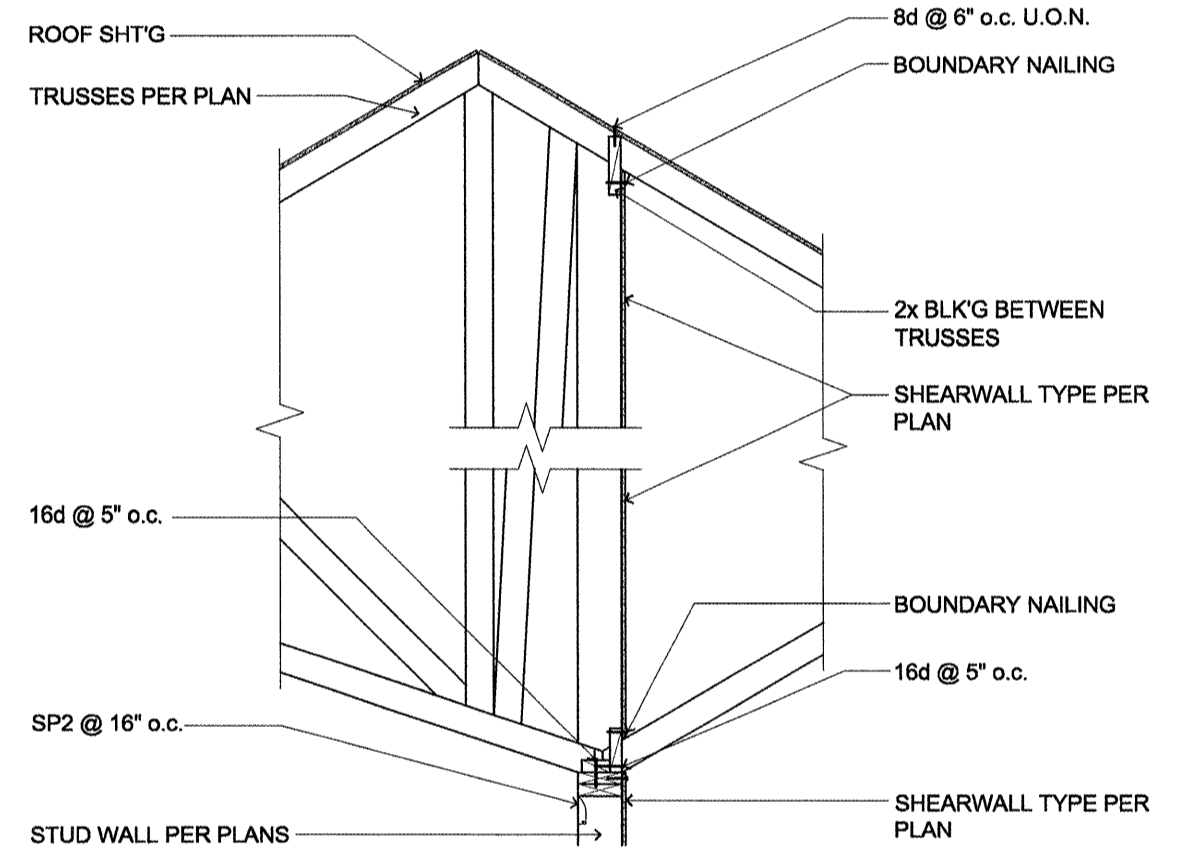
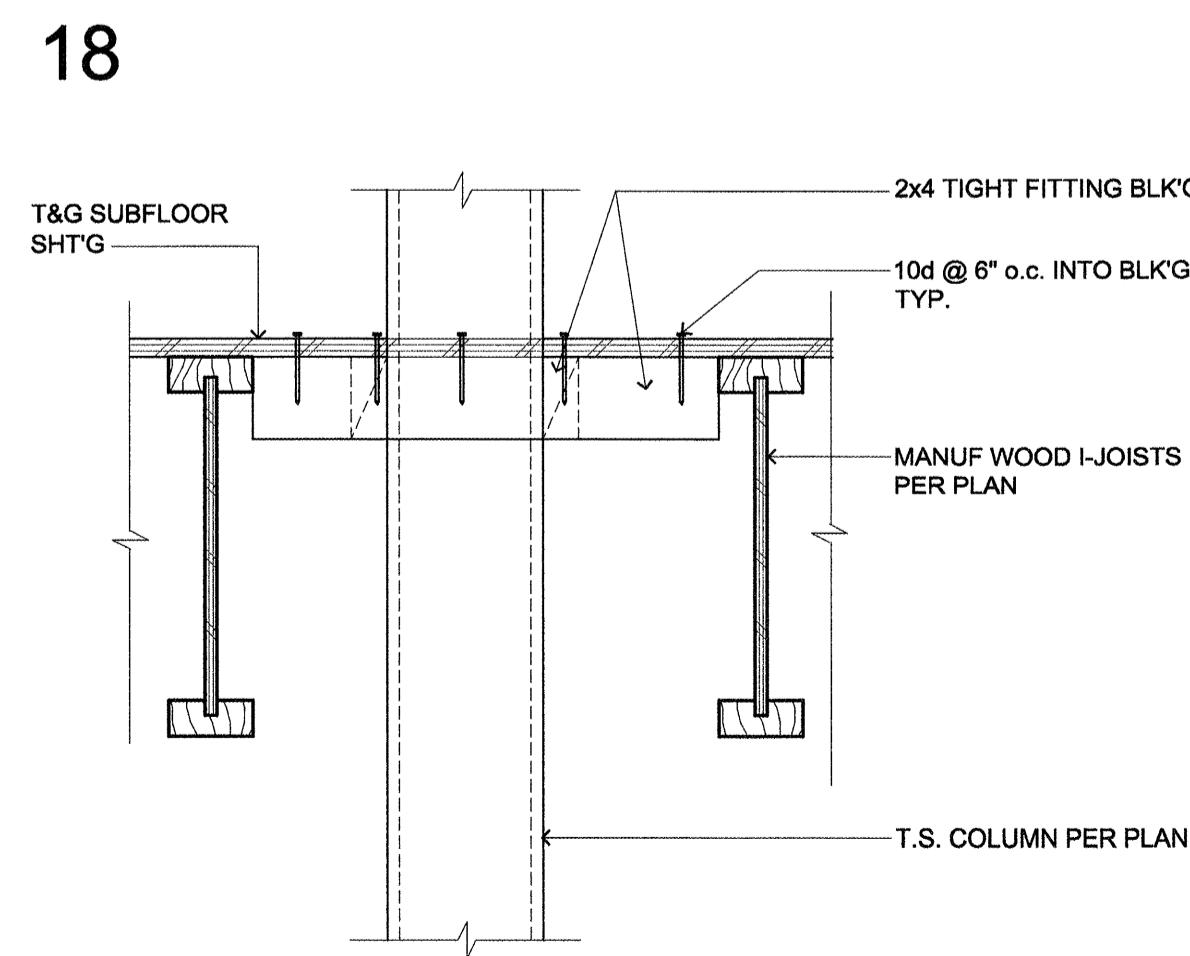


20 WALL / FLOOR INTERSECTION (JOISTS PERPENDICULAR/PARALLEL TO WALL)
SCALE: 1 1/2" = 1'-0"

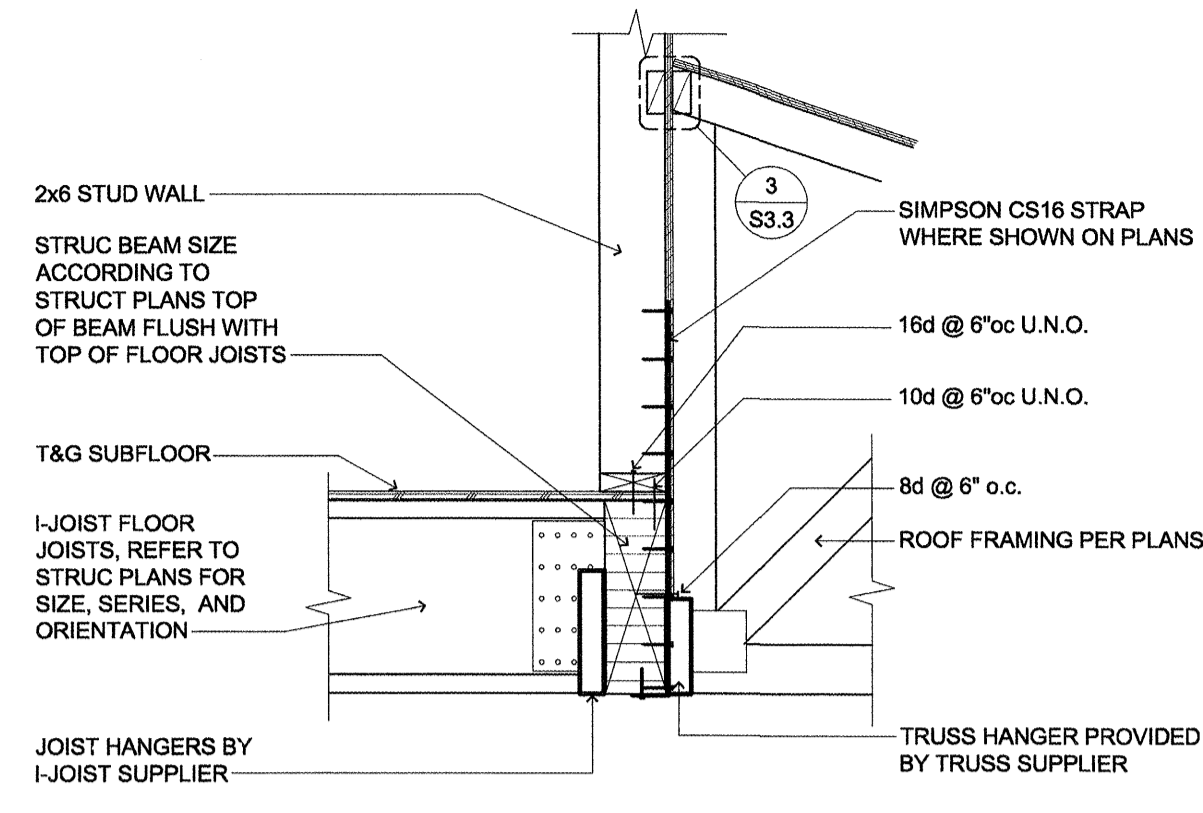


19 SHEAR TRANSFER (TRUSS WALL CONNECTION)
SCALE: 1/2" = 1'-0"

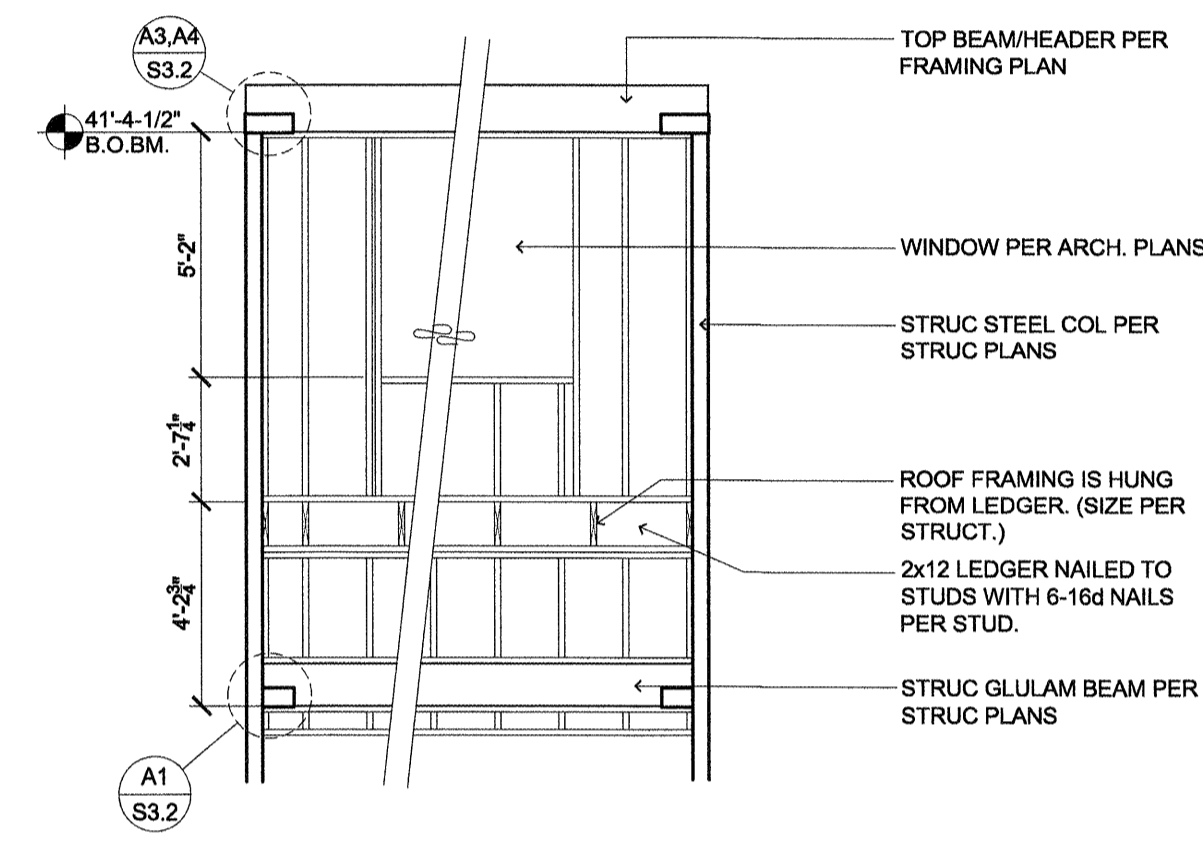
NOT USED



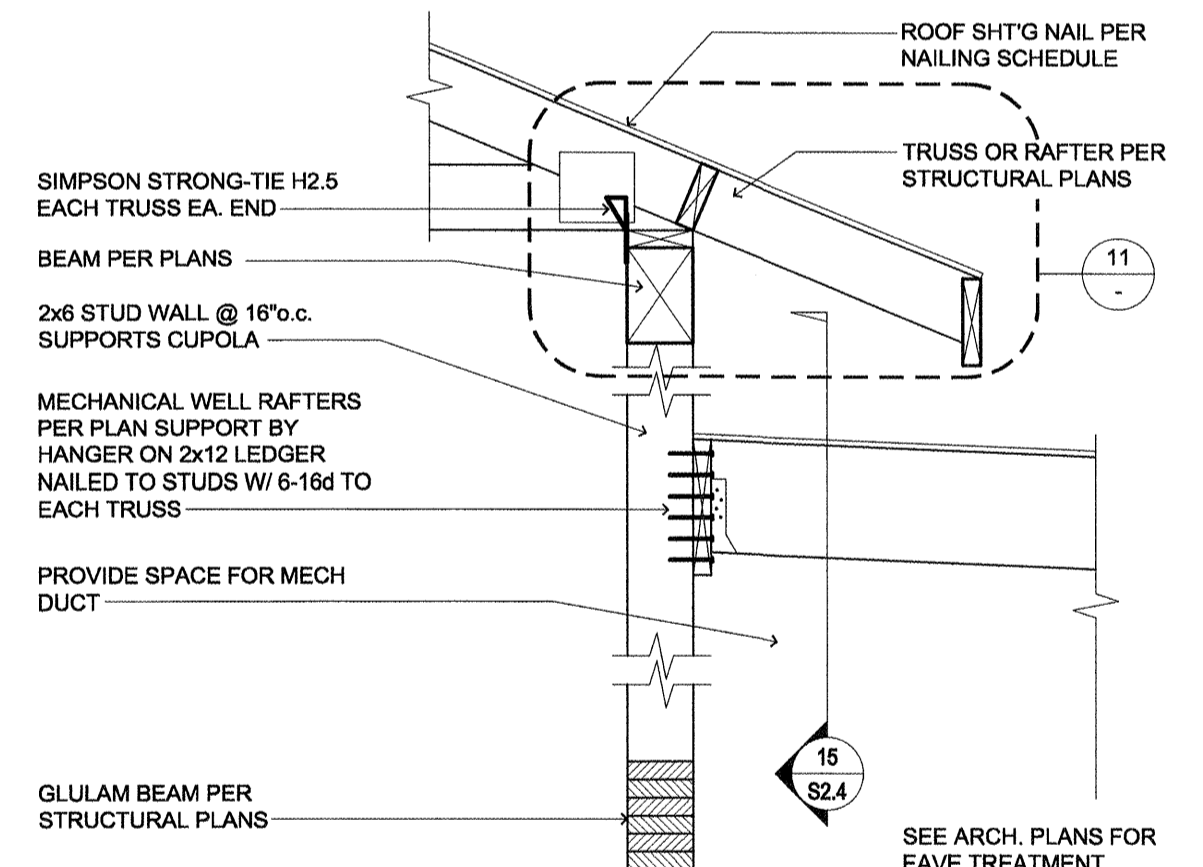
17 WALL / FLOOR INTERSECTION (MANUF. JOIST PARALLEL TO WALL)
SCALE: 1 1/2" = 1'-0"



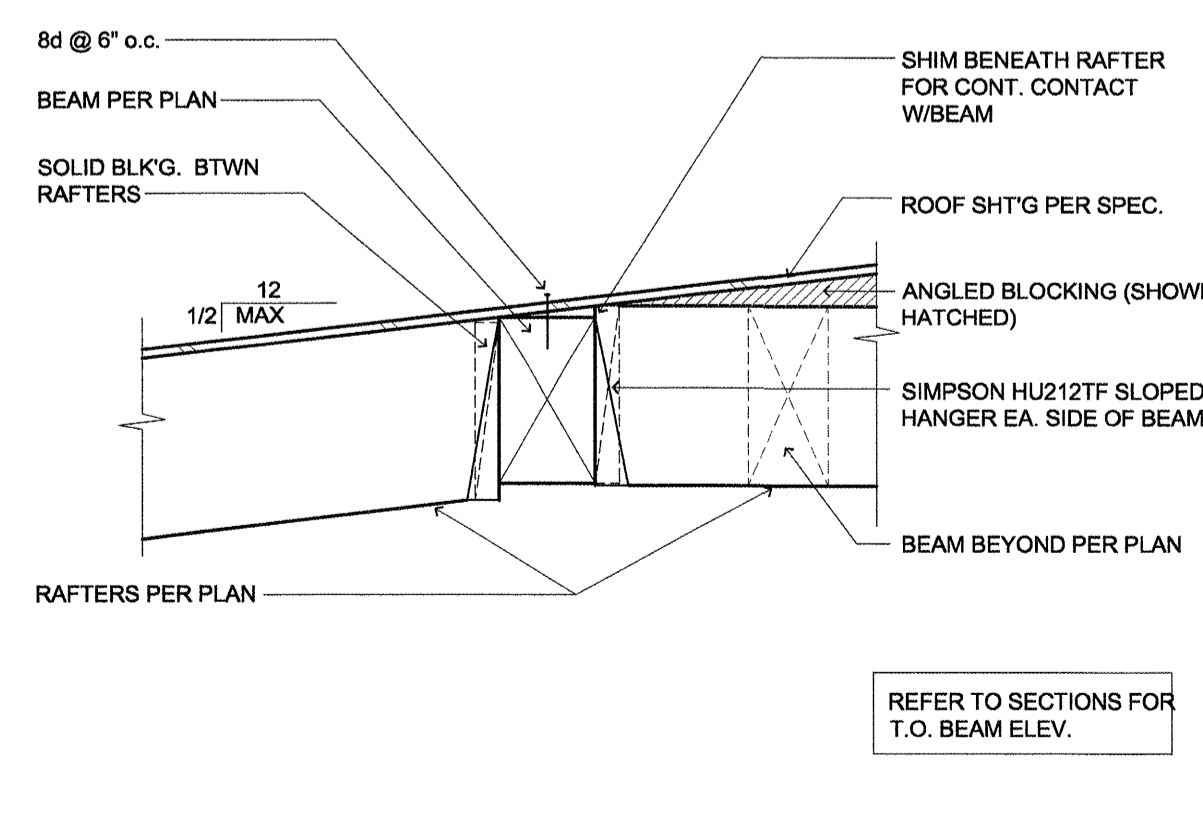
16 FLOOR / ROOF FRAMING (I-JOIST AND TRUSS CONNECTION)
SCALE: 3/4" = 1'-0"



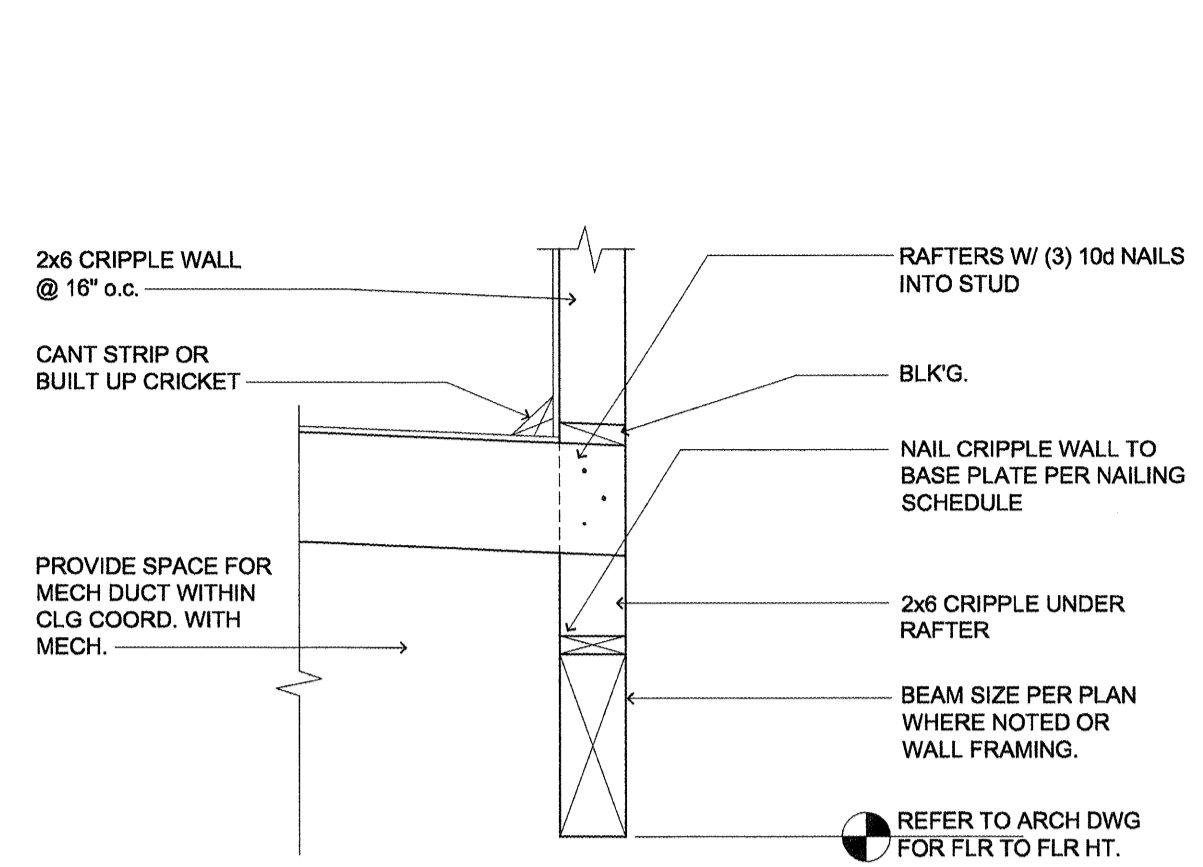
15 CUPOLA FRAMING (TYPICAL RETIREMENT RESIDENCE)
SCALE: 1/4" = 1'-0"



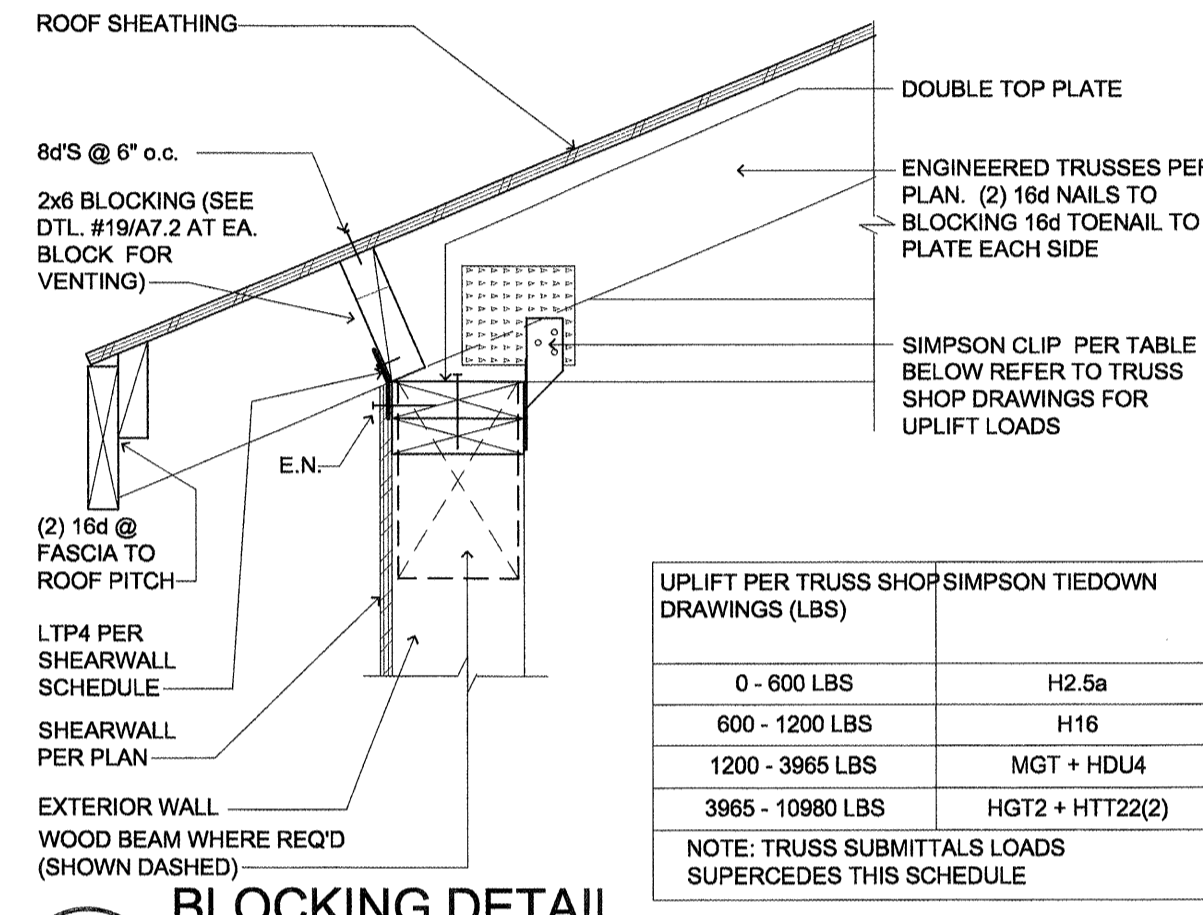
14 ROOF BEAM CONNECTION (AT CUPOLA IN ATRIUM)
SCALE: 3/4" = 1'-0"



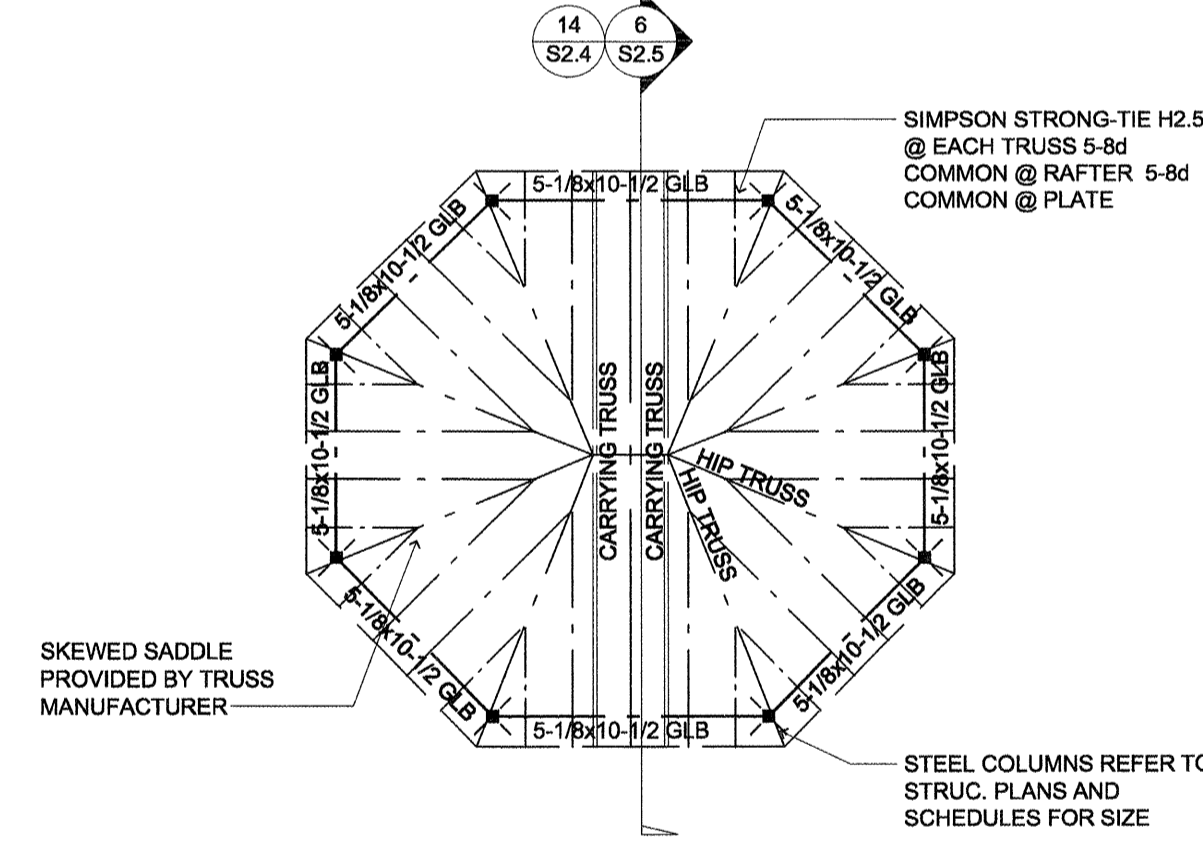
13 CONNECTION RAFTER TO BEAM
SCALE: 1" = 1'-0"



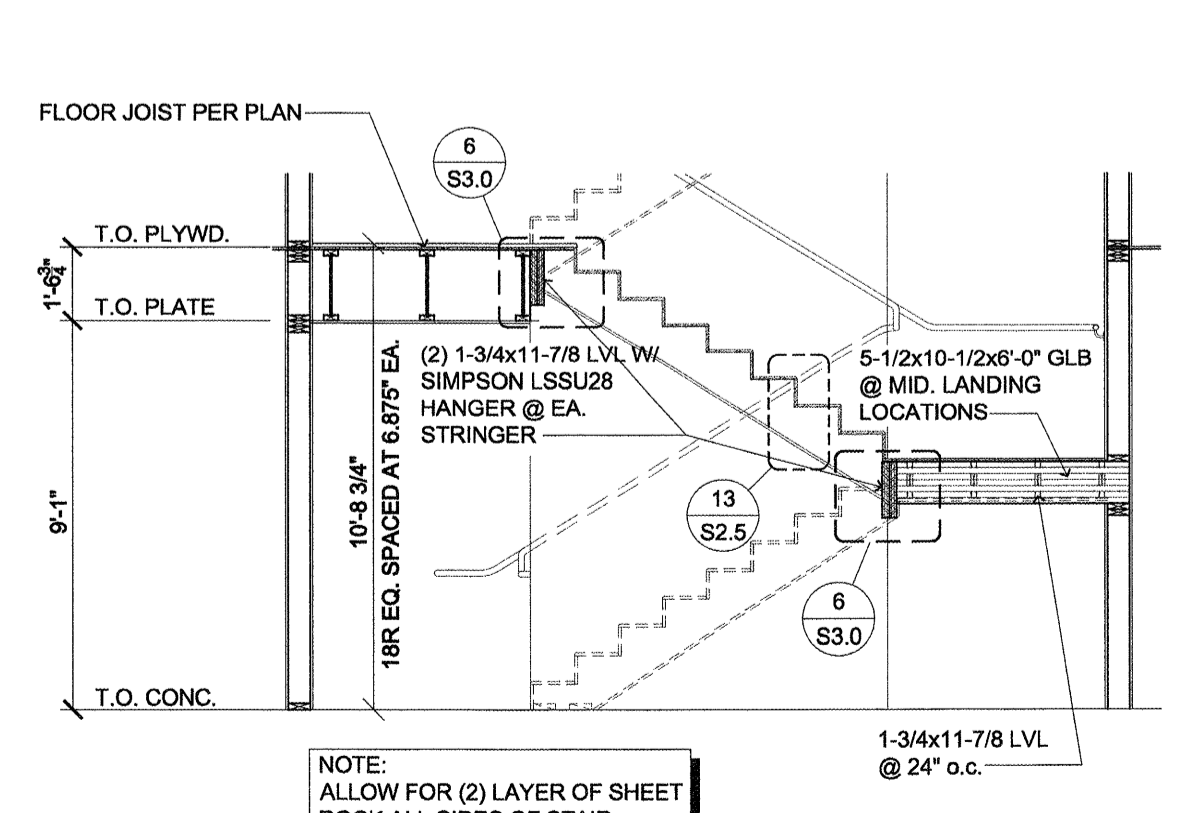
12 ROOF JOIST / BEAM CONNECTION (AT CORE NEAR ATRIUM)
SCALE: 3/4" = 1'-0"



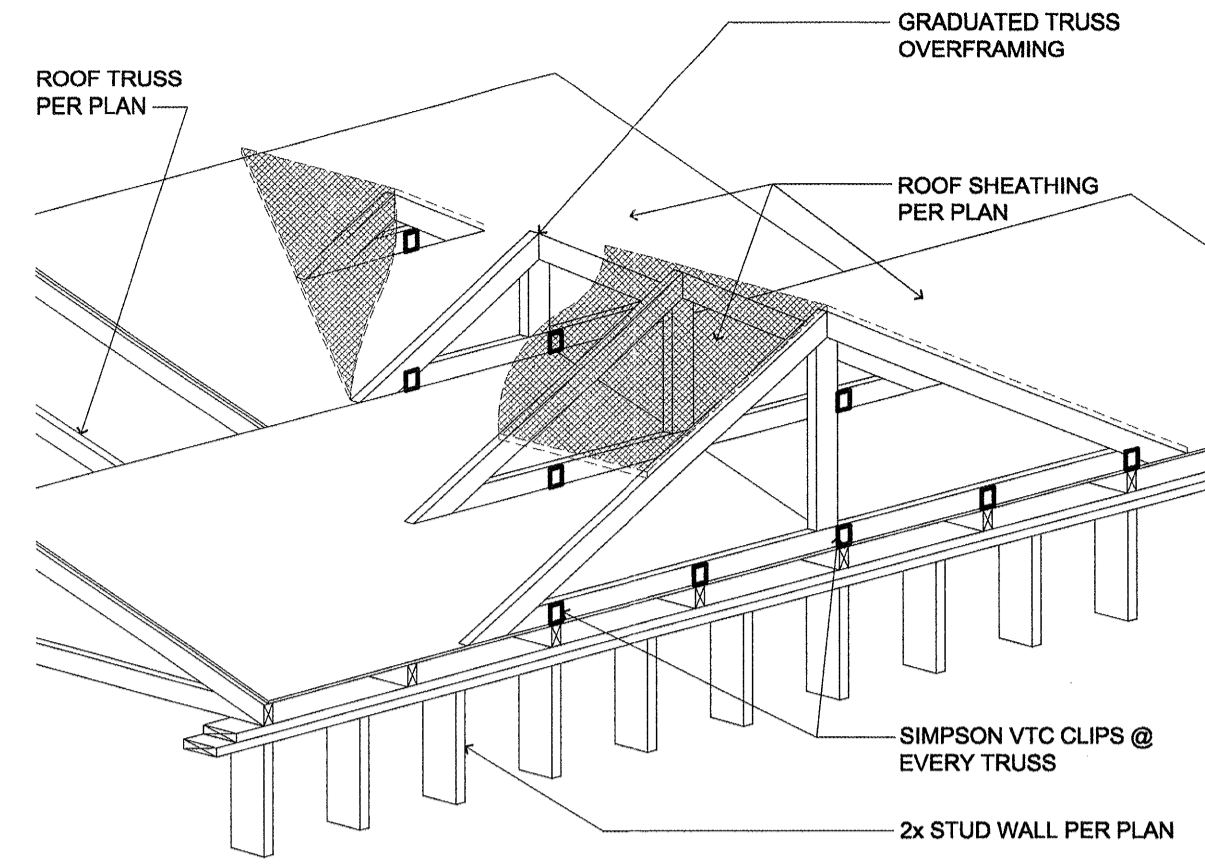
11 BLOCKING DETAIL (ROOF AT EAVE)
SCALE: N.T.S. (1:8)



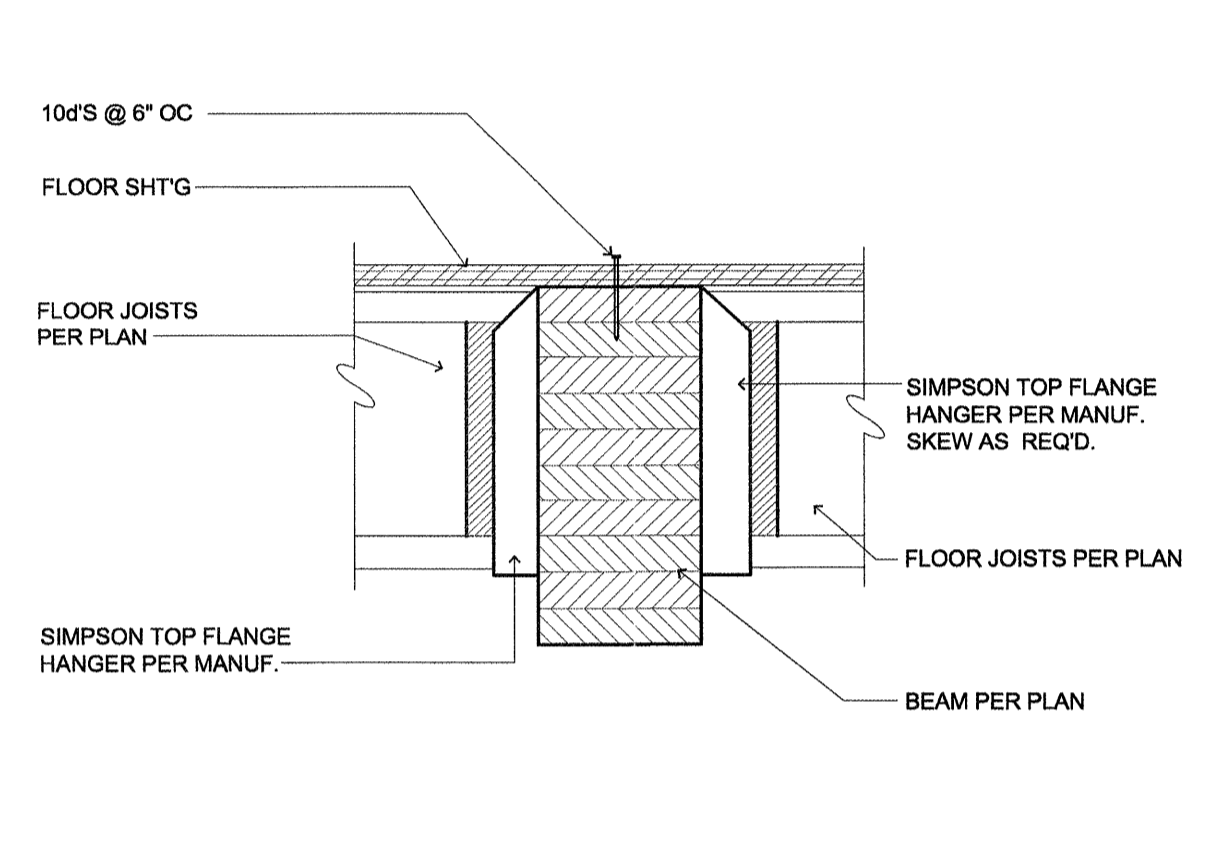
10 CUPOLA ROOF FRAMING (TRUSSED FRAMING)
SCALE: 1/8" = 1'-0"



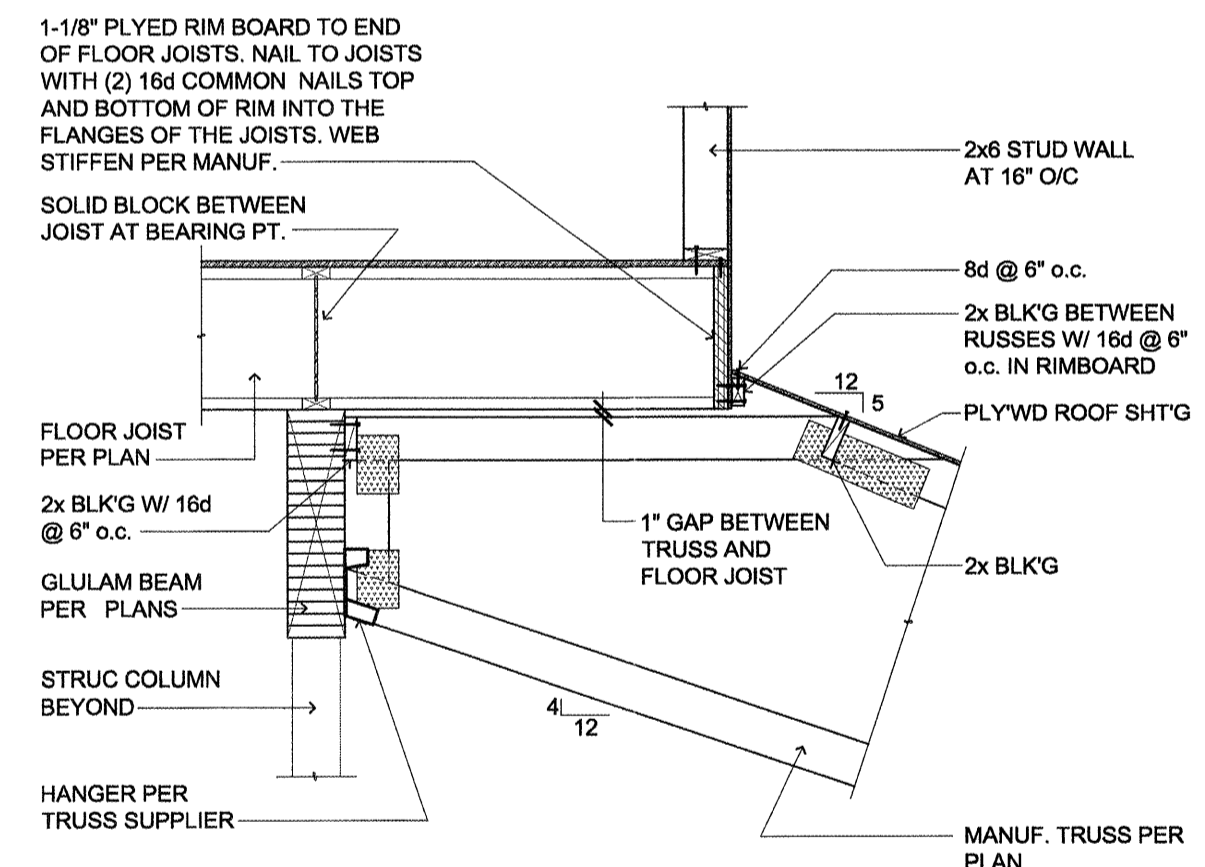
9 BEAMS AT STAIR LANDINGS (WOOD FRAMING - TYPICAL @ WING ENDS)
SCALE: 1/4" = 1'-0"



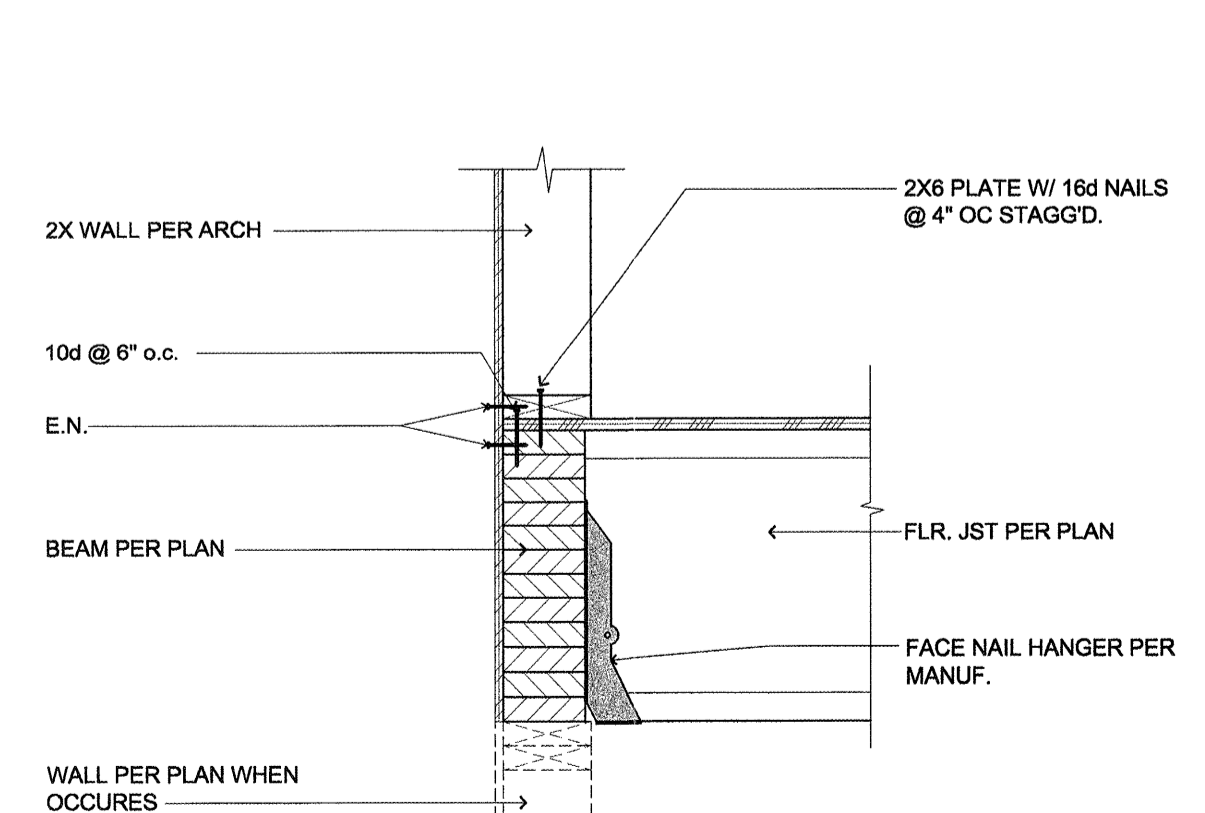
8 TYPICAL GABLE OVERFRAMING
SCALE: 3/4" = 1'-0"



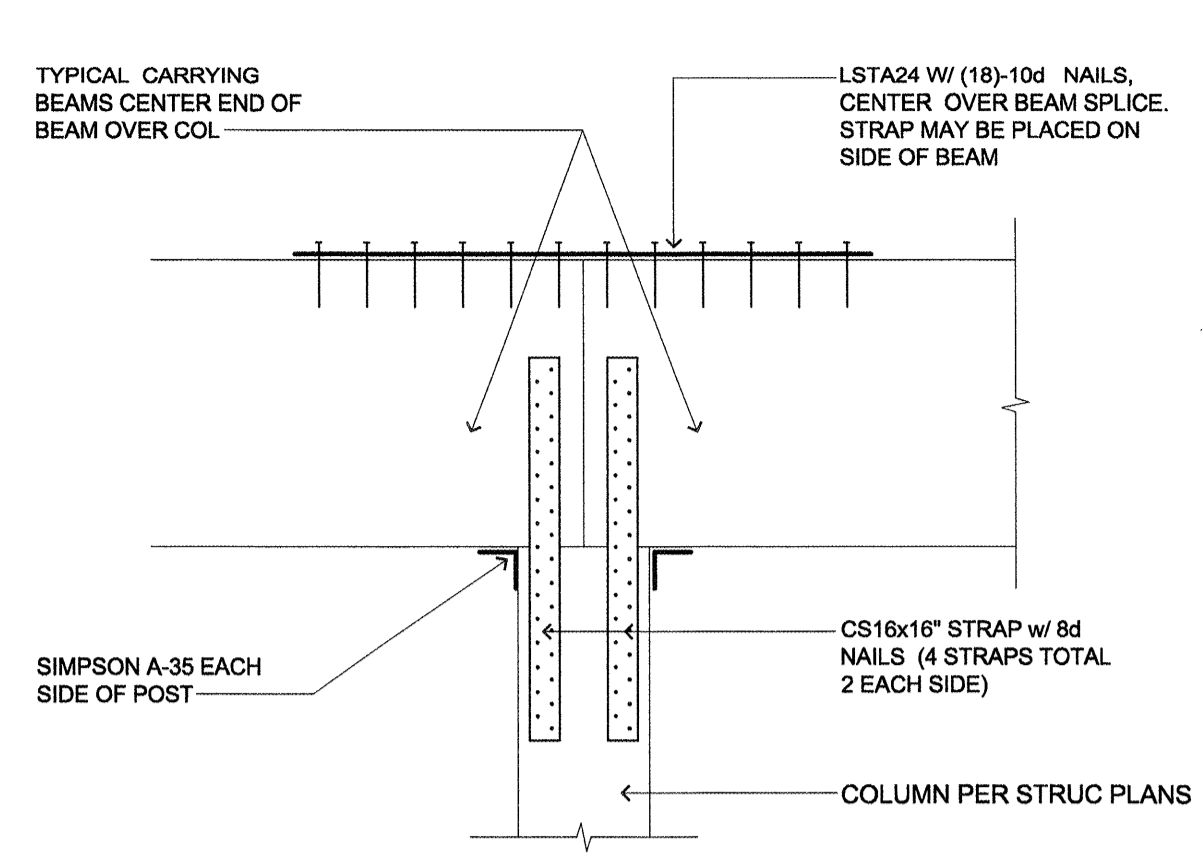
7 CONNECTION DETAIL (JOIST TO WOOD BEAM)
SCALE: N.T.S. (1:8)



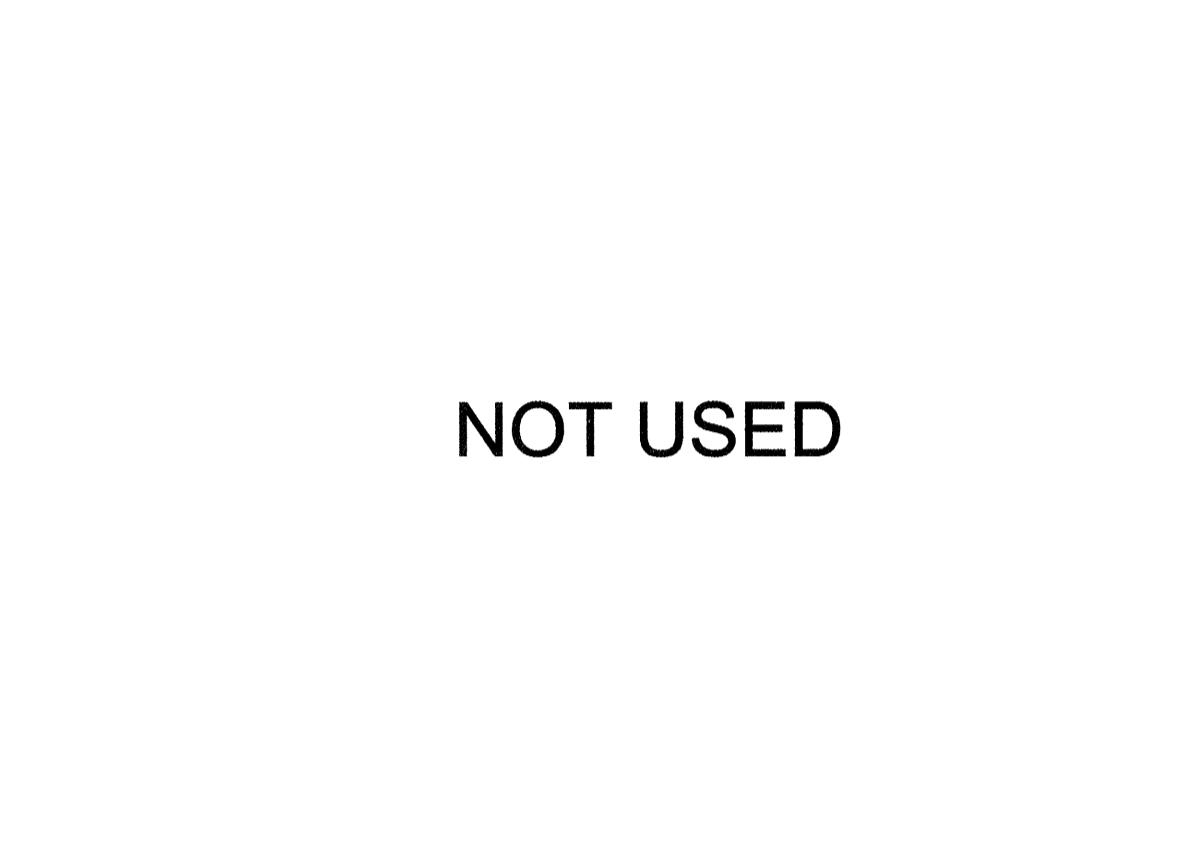
6 CONNECTION (DINNING ROOM CEILING)
SCALE: 1/2" = 1'-0"



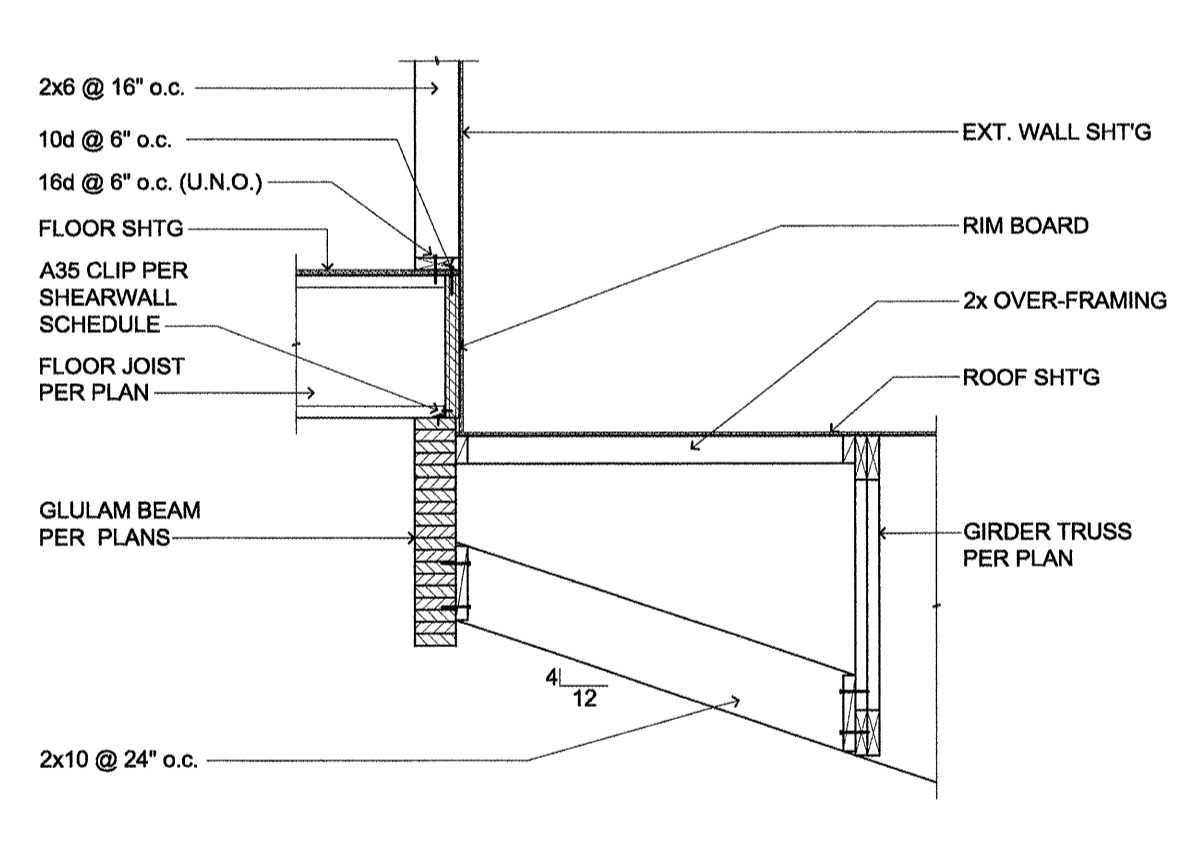
5 CONNECTION FLOOR TO BEAM
SCALE: 1" = 1'-0"



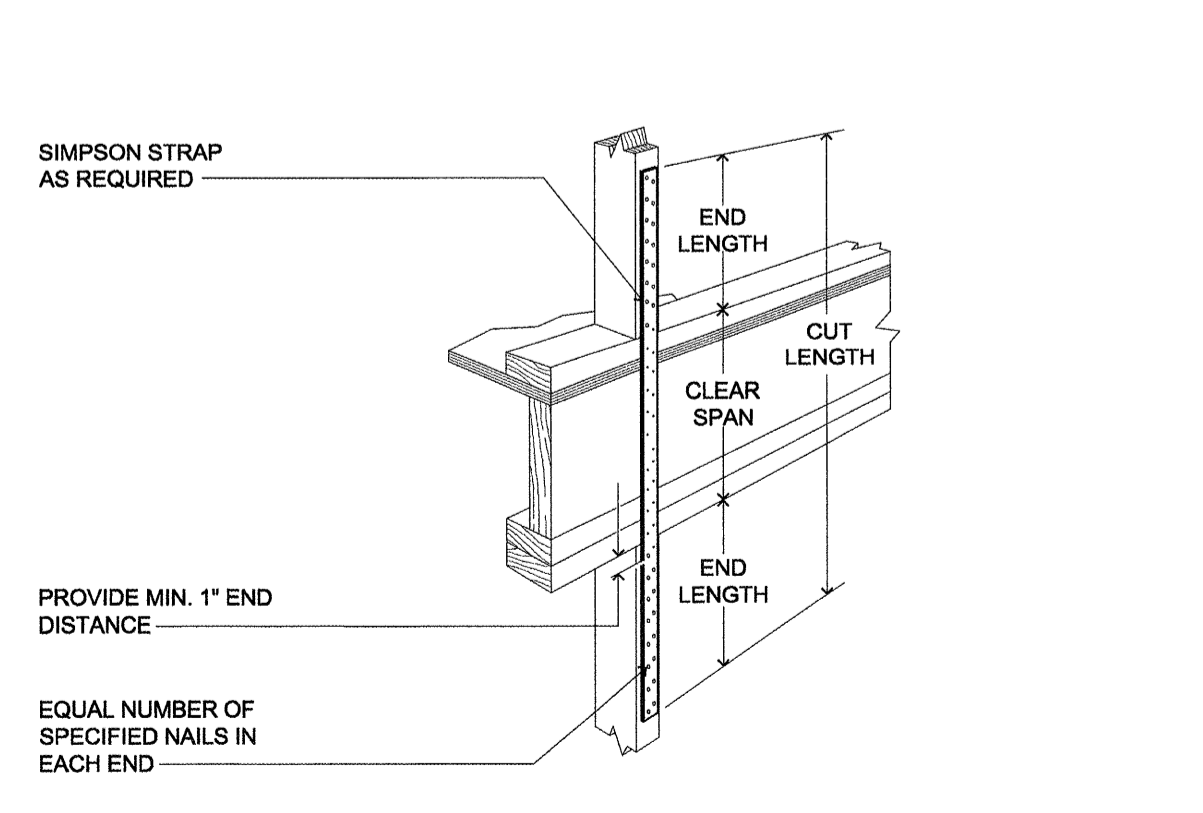
4 CONNECTION DETAIL (TYPICAL CONNECTION)
SCALE: N.T.S. (1:8)



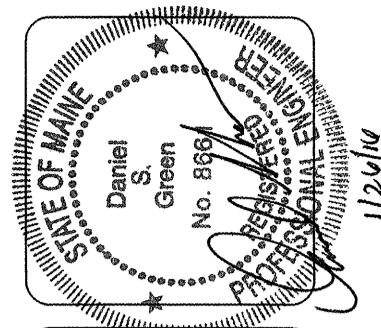
3 CONNECTION (DINNING ROOM CEILING)
SCALE: 1/2" = 1'-0"



2 CONNECTION (DINNING ROOM CEILING)
SCALE: 1/2" = 1'-0"



1 SHEAR WALL HOLDOWNS (NAILING AND HOLDOWN HARDWARE)
SCALE: N.T.S. (1:24)



lenity architecture
3150 Ketter Court, SE, Salem, Oregon 97301
P: 503 399 1050 F: 503 399 0565 W: lenityarchitecture.com

COLSON AND COLSON
GENERAL CONTRACTOR, INC.
2860 MCGILCHRIST STREET, SE, SUITE 200
SALEM, OREGON, 97302
PHONE (503) 586-7401

PORTLAND
RETIREMENT RESIDENCE
802 OCEAN AVE. PORTLAND, MAINE 04103

STRUCTURAL
DETAILS

SHEET
S2.4

www.11x14.com 4.25M PWA 11/20/2015 11:48 AM [Backup] http://www.11x14.com/structural/structural_details.dwg:27.4