

GENERAL NOTES

- In any run of 10 or more trusses, any web with lateral bracing, needs diagonal brace every 10th truss (20 feet). Diagonal brace should be at approximately 45 degrees, and should cross at least 3 trusses.
- These truss plans are to be used in conjunction with the job blueprints. If there are any discrepancies, please notify the truss designer.
- All hardware is specified as Simpson hardware. Equivalents are acceptable.
- If there are any questions, please phone Fred Vanhedegan at (250) 874-3304.

TRUSSES TO BE PLACED @ 2'-0" o/c UNLESS OTHERWISE NOTED!

ALL BEAMS SHOWN ON DRAWINGS ARE PROVIDED BY OTHERS AND ARE ONLY SHOWN FOR REFERENCE!

REFER TO ENGINEERED TRUSS SHOP DRAWINGS FOR BRACING REQUIREMENTS OF TRUSSES AND LOCATIONS.

NOTE: T1/T3 TYPE TRUSS WILL ACCOMADATE CANTILEVER CONDITION AND REGULAR BEARING.

NOTE: FOR TRUSS UPLIFT FOLLOW THE BELOW SCHEDULE:

- 0 - 600lbs = 1 - H2.5A
- 600 - 1200lbs = 2 - H2.5A
- 1200 - 3965lbs = MGT+HDU4
- 3965 - 10980lbs = HGT2+HTT22 (2)

HANGER SCHEDULE

- Simpson Hanger LUS24
- Simpson Hanger HUS26
- ⊗ Simpson Hanger THASR/L29
- ⊕ Simpson Hanger HGUS210-3
- ⊛ Simpson Hanger HGUS210-2

Project Design Data:

Building Code	IBC2009/TP2007			
Building Classification	Commercial			
Wind Loading	100 mph	Exposure B		
Typical Roof Loading	TCLL-40 psf	TCDL-7 psf	BCLL-10 psf	BCDL-10 psf
Mechanical Well Loading	TCLL-40 psf	TCDL-80 psf	BCLL-10 psf	BCDL-10 psf



304 7th ST
CRANBROOK, BC CAN. 250-874-3304
E-mail: fredvan@inlinetruss.com

COLSON & COLSON

PORTLAND, ME

PORTLAND RETIREMENT RESIDENCE

B-WING ROOF

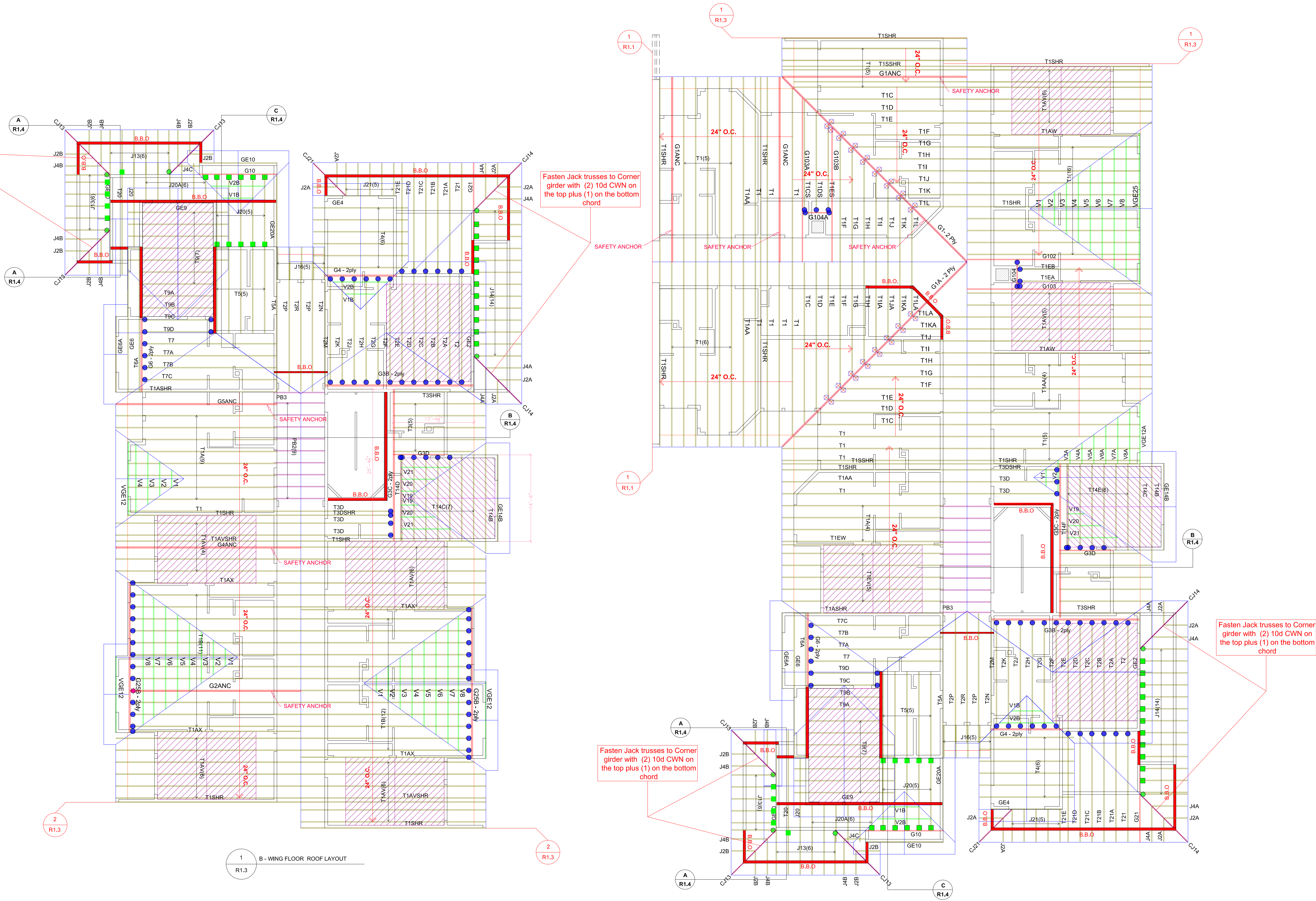
Scale:	1/8" = 1'	Date:	23 SEPT 2015	Drawn By:	FV	Job Number:	UXXX
Revision:	00	Date:	23 SEPT 2015	Comments:	FOR APPROVALS ONLY	Drawing Number:	R1.3

Fasten Jack trusses to Corner girder with (2) 10d CWN on the top plus (1) on the bottom chord

Fasten Jack trusses to Corner girder with (2) 10d CWN on the top plus (1) on the bottom chord

Fasten Jack trusses to Corner girder with (2) 10d CWN on the top plus (1) on the bottom chord

Fasten Jack trusses to Corner girder with (2) 10d CWN on the top plus (1) on the bottom chord



1 B-WING FLOOR ROOF LAYOUT

2 CORE FIRST FLOOR ROOF LAYOUT