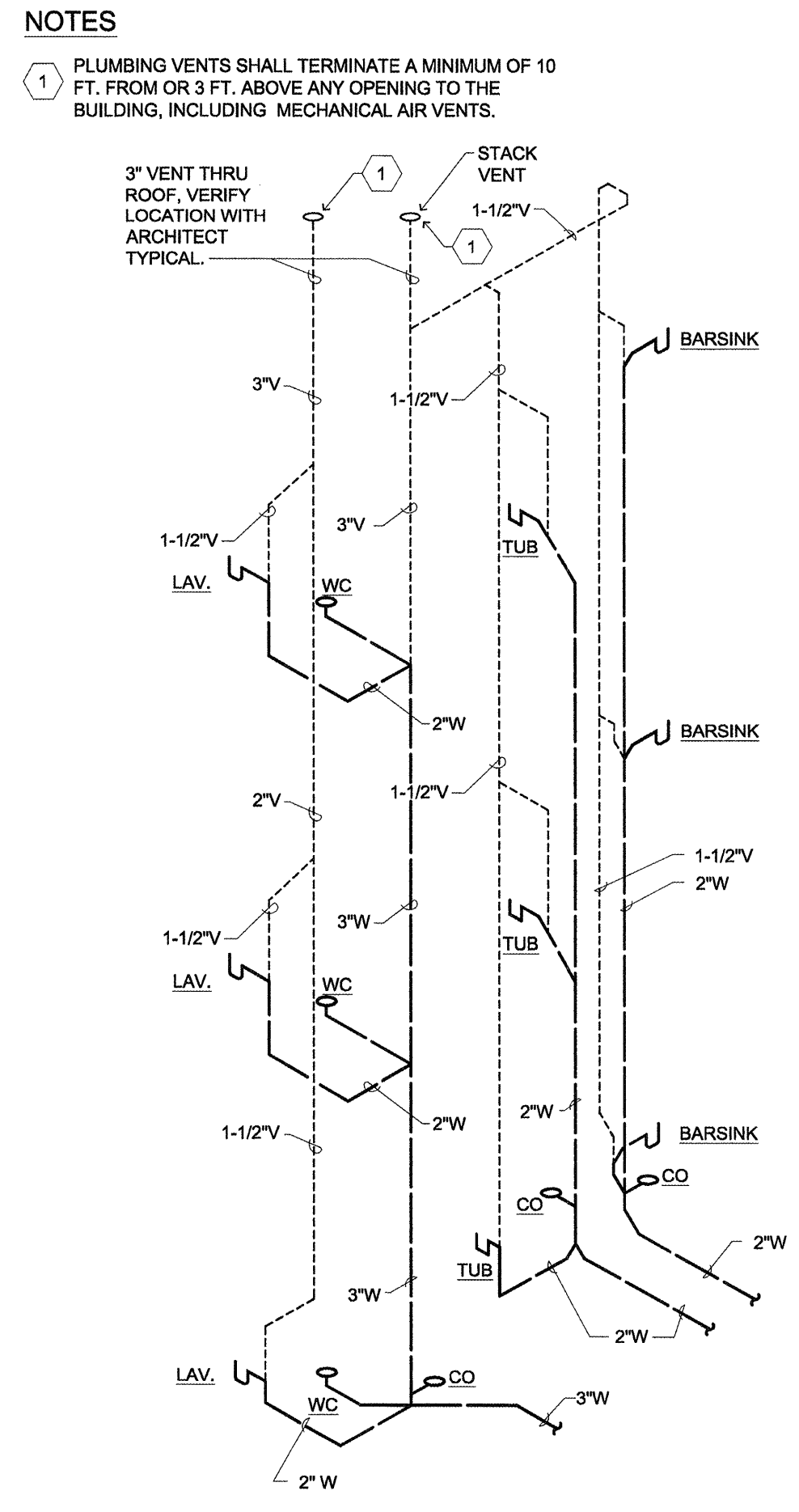


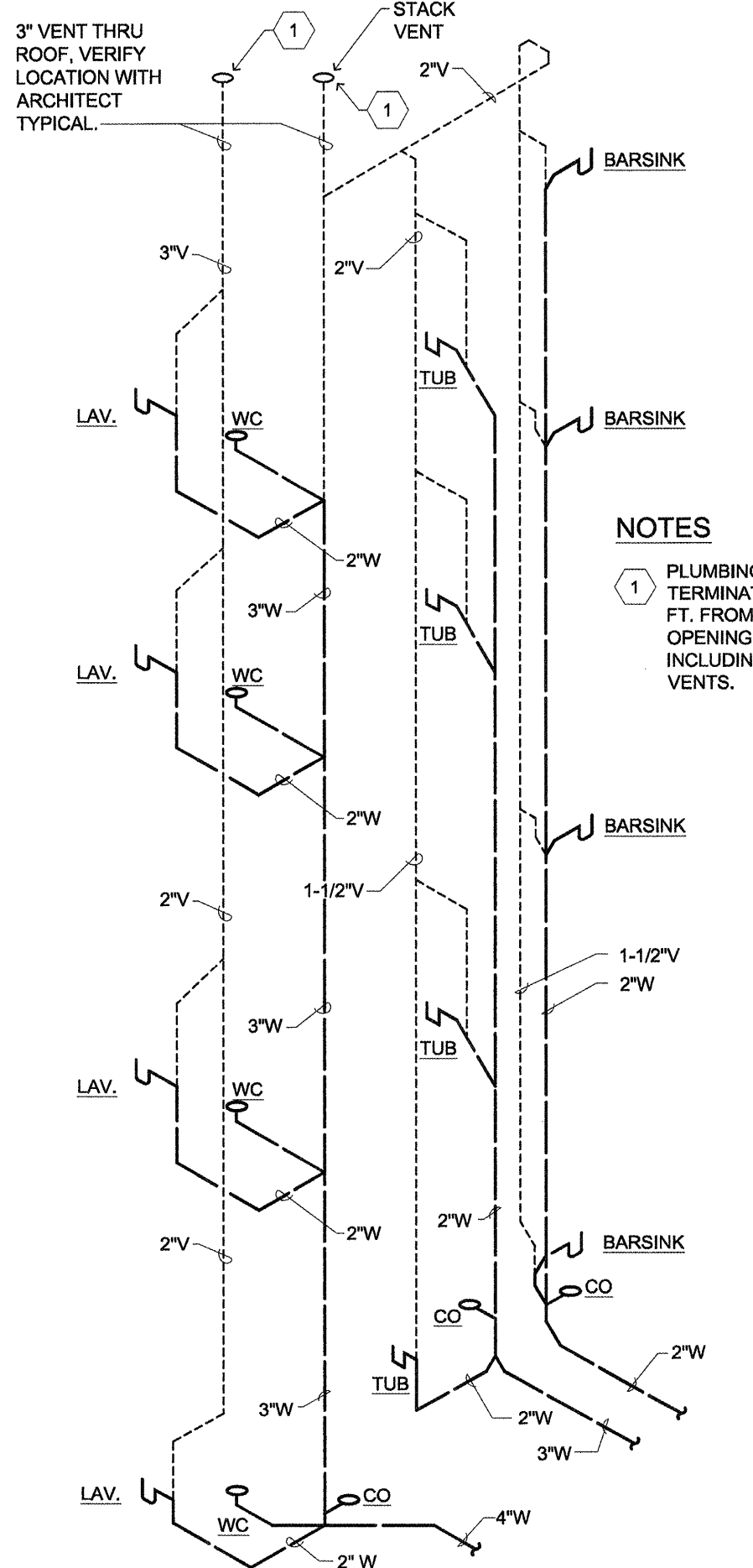
NOTE:
 1. PROVIDE 2" STANDPIPE 18"-36" LONG AT ALL CLOTHES WASHERS.
 2. NO CONN. INTO DRAINAGE SYSTEM WITHIN 8 FEET OF LAUNDRY STACK FOR SUDS RELIEF.

9 LAUNDRY DRAIN AND VENT RISER (SCHEMATIC)
 SCALE: N.T.S.
 T:\15MECH\400PLUMB\15400194



NOTES
 1. PLUMBING VENTS SHALL TERMINATE A MINIMUM OF 10 FT. FROM OR 3 FT. ABOVE ANY OPENING TO THE BUILDING, INCLUDING MECHANICAL AIR VENTS.
 3" VENT THRU ROOF, VERIFY LOCATION WITH ARCHITECT TYPICAL.

6 WASTE DETAIL (RISER SCHEMATIC 3-STORY)
 SCALE: N.T.S.
 T:\15MECH\400PLUMB\15400219



NOTES
 1. PLUMBING VENTS SHALL TERMINATE A MINIMUM OF 10 FT. FROM OR 3 FT. ABOVE ANY OPENING TO THE BUILDING, INCLUDING MECHANICAL AIR VENTS.

3 WASTE DETAIL (RISER SCHEMATIC 4-STORY)
 SCALE: N.T.S.
 T:\15MECH\400PLUMB\15400220

FIRE BARRIER PENETRATION PROTECTION
 PROTECT ALL PENETRATIONS OF FIRE RATED CONSTRUCTION:
 DRAFT STOPS AROUND ALL PLUMBING AND ELECTRICAL PENETRATIONS AT FIRE RATED CONSTRUCTION, INCLUDING CONDUIT, FIXTURES, OUTLETS, PIPES, PANEL BOXES, ETC.
 A) METAL PRODUCTS:
 1) ASTM E-814 MIN. OR AS REQ'D BY BUILDING OFFICIAL.
 2) LISTED SILICONE FOAM
 B) PLASTIC PRODUCTS:
 1) UL LISTED FIRE BARRIER PENETRATION SEALING SYSTEM.
 PENETRATIONS:
 -INSTALL ACCORDING TO MANUFACTURERS INSTRUCTIONS.
 LISTINGS AND APPROVALS:
 -UL 1479 FIRESTOPS, TESTS OF THROUGH PENETRATIONS
 -ASTM E-119 FIRE TEST OF BLDG. CONST. AND MATERIALS
 -ASTM E-814 FIRE TESTS OF THRU PENETRATION FIRE STOPS
 -ICC, INTERNATIONAL CODE COUNCIL
 -NFPA 101, LIFE SAFETY CODE

FIXTURE LOAD SCHEDULE
 Portland, ME. Fixture unit count

Based on UPC 2009

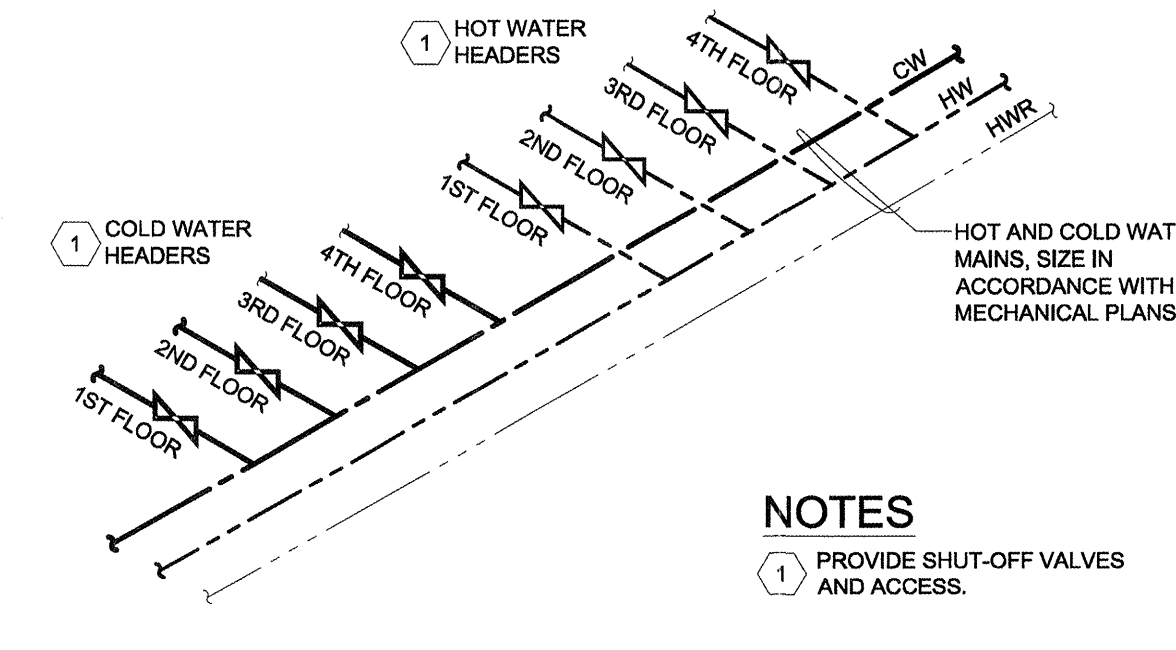
RETIREMENT FIXTURE LOAD SCHEDULE	SAN. FU		H.W. FU		TOTAL		FULL H2O		H2O TOTAL	
	QTY	TOTAL	QTY	TOTAL	QTY	TOTAL	QTY	TOTAL	QTY	TOTAL
BATHROOM GROUP	151	5	755	1.5	226.50	2.7	408	3.6	544	
WATER CLOSET	6	3	30	-	3	3	30	3	30 P.1, P.2	
LAVATORY	6	1	6	1.5	9	1.5	9	2	12 P.3, P.11, P.16	
SINK STD	133	2	266	1	133	1	133	1.4	189 P.4	
SINK HEAVY	3	2	6	2.25	7	2.25	7	3	9 P.5	
SERV. SINK	6	2	12	2.25	14	2.25	14	3	18 P.19	
SHOWER/BATH	0	2	0	1	0	1	0	1.4	0 P.6, 7, 8 & 9	
CLO. WASHERS	19	3	54	2.25	41	2.25	41	3	54 P.17	
HOSE BIBB	11	-	-	-	-	-	6	6	6	
FOUNTAIN	2	0.5	1	-	0.25	1	0.25	1	1 P.10	
FLOOR DRAIN	16	2	32	-	-	-	-	-	0 P.13	
BEAUTY SINKS	2	2	6	2.25	5	2.25	5	3	6	
LAIN. SINK	9	2	18	1	3	1	3	1.4	13 P.14	
TOTAL	363	2	1186	1	443	1	709	1	927	

KITCHEN	
QTY	TOTAL
FLOOR SINK	6
SINK	4
H&C FAUCET	4
C ONLY FAUCET	4
C ONLY FAUCET(3/4)	2
H ONLY FAUCET	2
DISWASHER	1
TOTAL	22

BUILDING TOTAL	SAN. FU	H.W. FU	TOTAL	FLULL H2O	H2O TOTAL
	385	12.16	481	7.55	995

SYMBOLS LEGEND

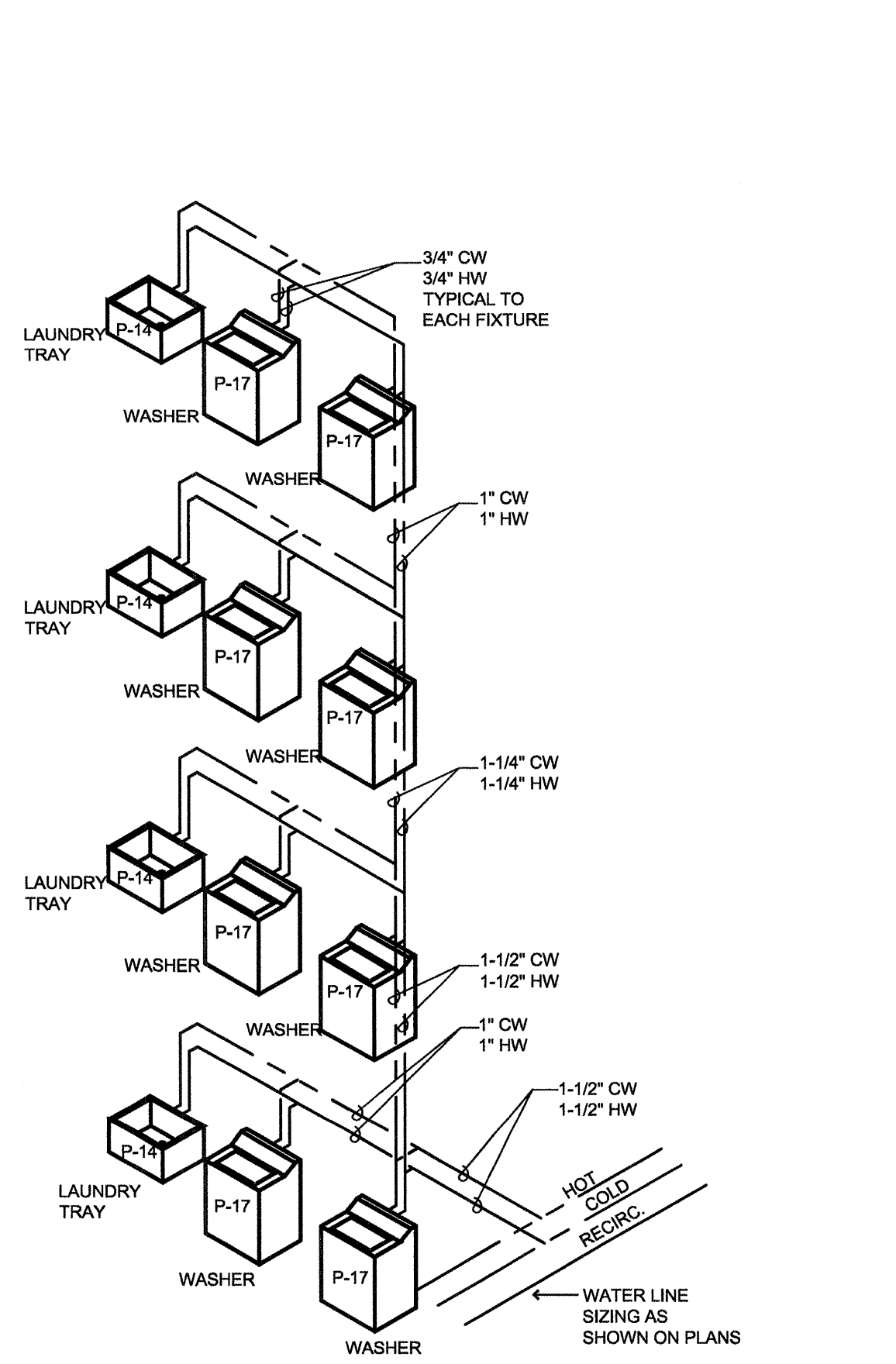
	HW. RECIRCULATING PUMP		TEMPERATURE GAUGE
	PIPE UNION		VACUUM BREAKER
	BALANCING VALVE		CHECK VALVE
	GAS PRESSURE REGULATOR		TEMPERATURE / PRESS RELIEF VALVE
	GATE OR BALL VALVE		P-X" FIXTURE WITH TRAP
	AGA APPROVED FULL FLOW BALL VALVE, LINE SIZE		CIRCUIT SETTER VALVE



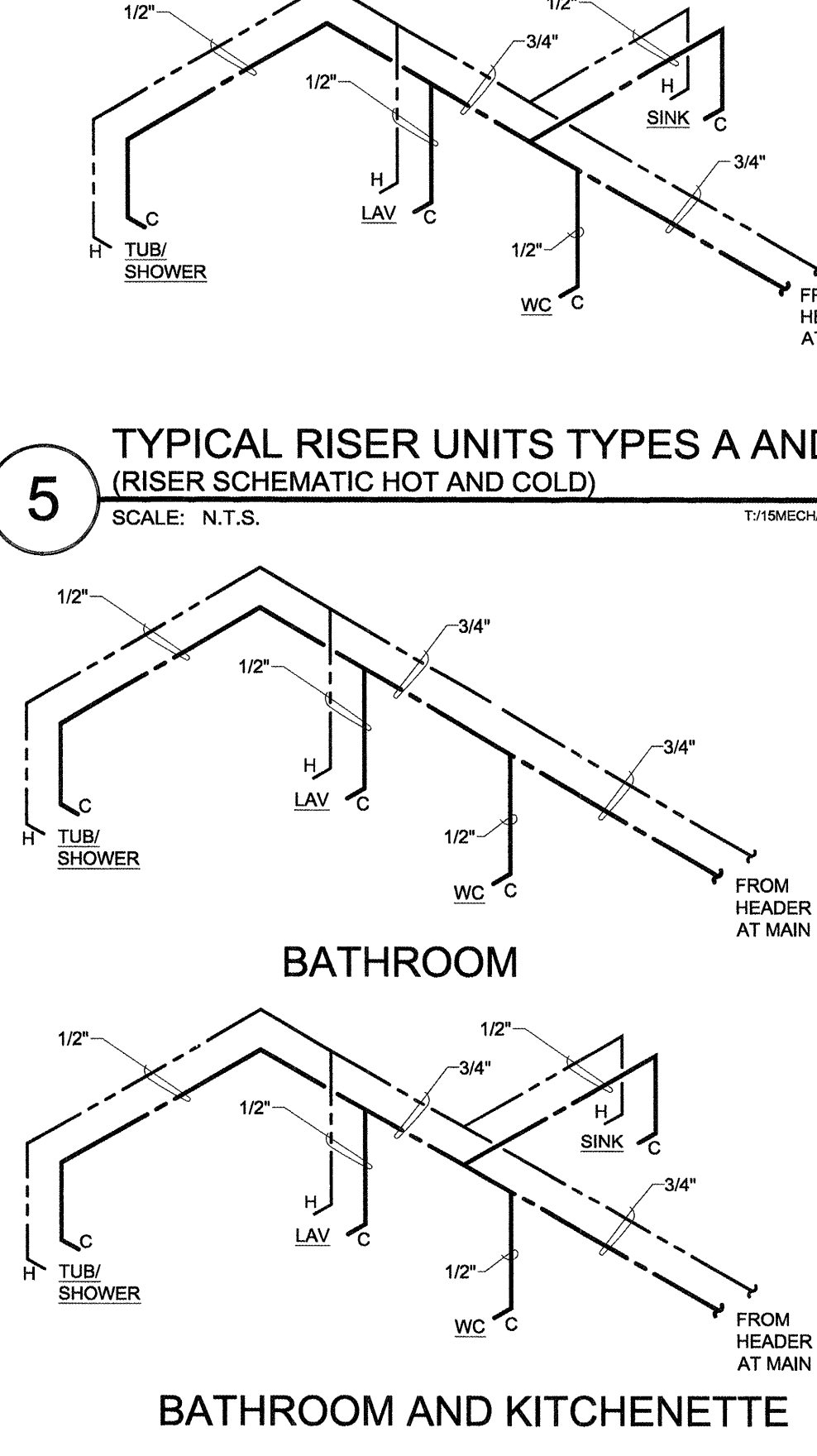
7 HOT AND COLD MAINS (RISER SCHEMATIC)
 SCALE: N.T.S.
 T:\15MECH\400PLUMB\15400191

KEY NOTES WATER HEATER

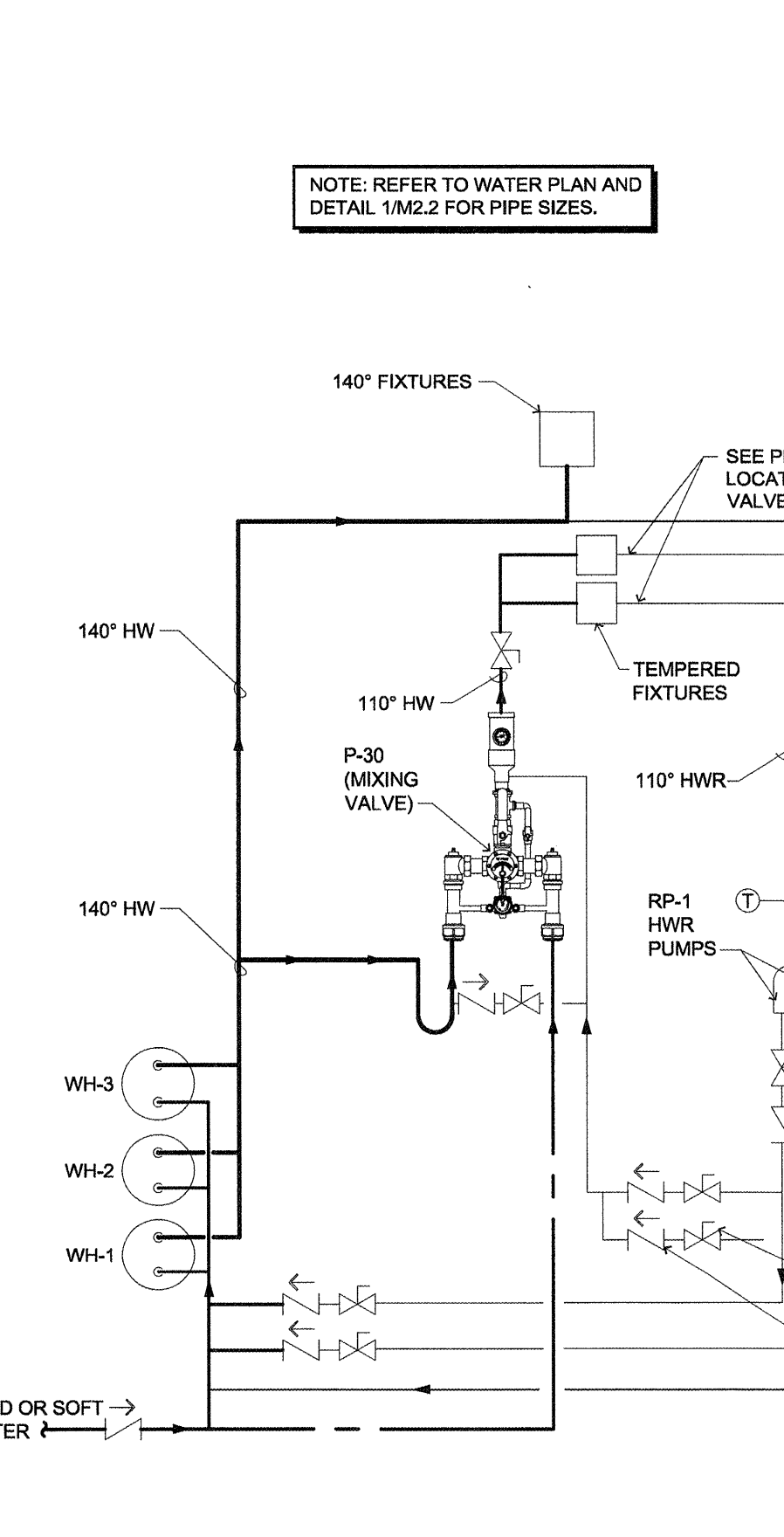
1 BALL VALVE, LINE SIZE	11 SEE DETAIL 2/M2.2 FOR MIXING VALVE.
2 THERMOMETER	12 EXPANSION TANK - AMTROL ST-42V-ASME 17.5 GAL., 16-1/2" DIAMETER, 24-1/4" HIGH.
3 UNIONS - TYPICAL	13 PROVIDE EARTHQUAKE STRAPPING FOR WATER HEATERS AT TOP 1/3 OF TANK AND AT BOTTOM 1/3 OF TANK, OR PER LOCAL CODE.
4 CHECK VALVE	14 3" COMBUSTION AIR. SEE DETAIL 11/M4.0.
5 VACUUM BREAKER - (IF REQ'D BY LOCAL CODE)	15 1/2" CONDENSATE DRAIN CONNECTION TO FLOOR DRAIN.
6 RECIRC. PUMPS	16 3/4" HOSE BIBB CONNECTION FOR DRAINAGE
7 TEMP/PRESS RELIEF VALVE, DRAIN TO FLOOR DRAIN, TYP.	17 WATER HEATER CONTROL PANEL
8 3" GAS VENT. SEE DETAIL 11/M4.0.	
9 HOT WATER SUPPLY 140° MAX.	
10 RECIRC. H.W. RETURN LINES	



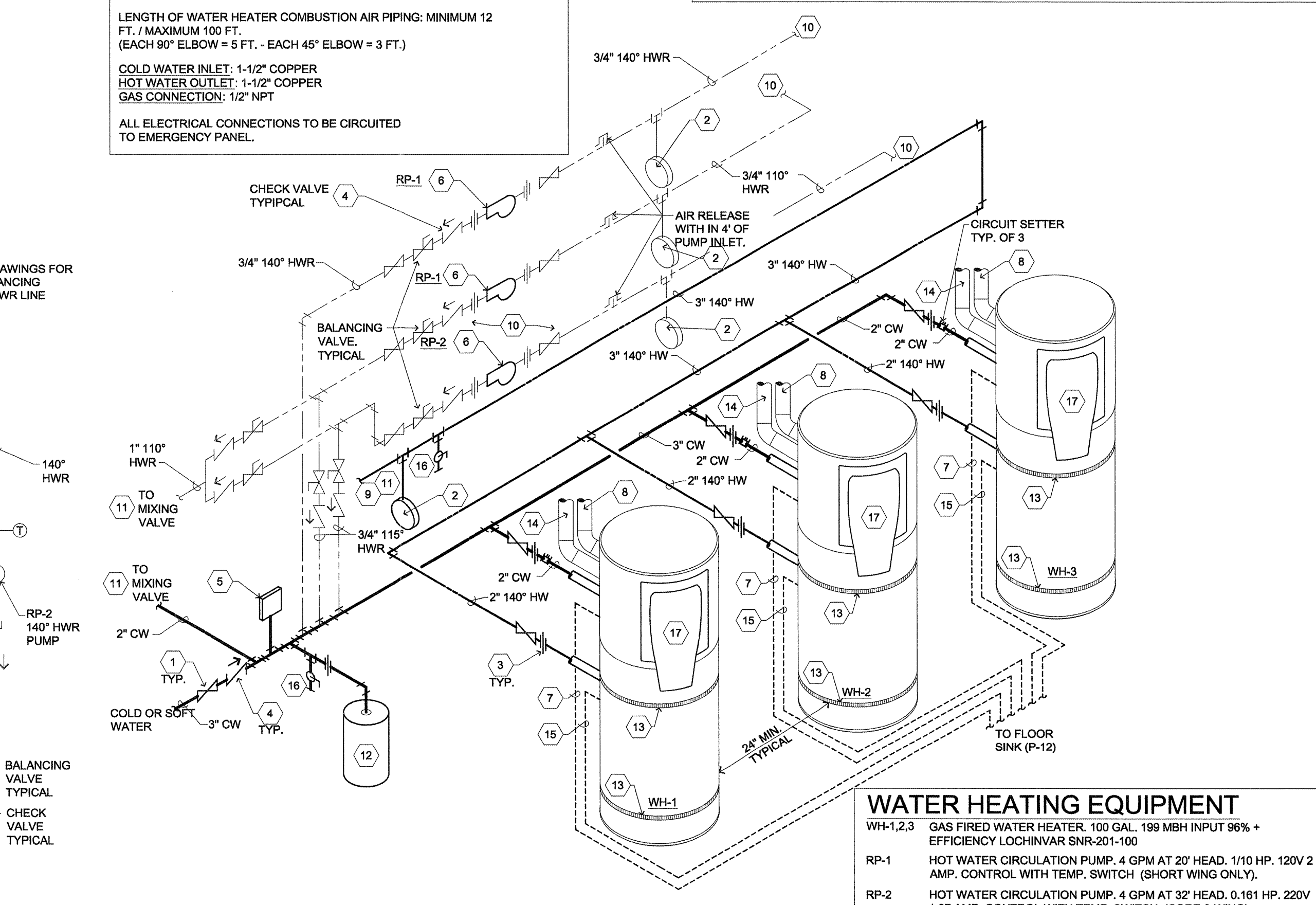
8 WATER SERVICE (RES. LAUNDRY RM.)
 SCALE: N.T.S.
 T:\15MECH\400PLUMB\15400190



5 TYPICAL RISER UNITS TYPES A AND B (RISER SCHEMATIC HOT AND COLD)
 SCALE: N.T.S.
 T:\15MECH\400PLUMB\15400190



2 WATER HEATER MIXING VALVE (PIPING SCHEMATIC)
 SCALE: N.T.S.
 T:\15MECH\400PLUMB\15400190A



1 PLUMBING DETAIL (WATER HEATER, VENT MANIFOLD PIPING SCHEMATIC)
 SCALE: N.T.S.
 T:\15MECH\400PLUMB\15400199

WATER HEATING EQUIPMENT
 WH-1,2,3 GAS FIRED WATER HEATER, 100 GAL., 159 MBH INPUT 96% + EFFICIENCY LOCHINVAR SNR-201-100
 RP-1 HOT WATER CIRCULATION PUMP, 4 GPM AT 20' HEAD, 1/10 HP, 120V 2 AMP. CONTROL WITH TEMP. SWITCH (SHORT WING ONLY).
 RP-2 HOT WATER CIRCULATION PUMP, 4 GPM AT 32' HEAD, 0.161 HP, 220V 1.07 AMP. CONTROL WITH TEMP. SWITCH, (CORE & WING).
 RP-1, 2 GRUNDFOS, ARMSTRONG, BELL AND GOSSETT, TACO, OR WATTS.

NOTE: PENETRATIONS OF AREA SEPARATION WALLS SHALL BE PROTECTED WITH THROUGH-PENETRATION FIRE STOPS AND MEMBRANE PENETRATION FIRE STOPS

lenity architecture
 350 North Court SE, Salem, Oregon 97301
 503.599.0565
 www.lenityarchitecture.com

COLSON AND COLSON
 GENERAL CONTRACTOR, INC.
 2280 McILCHRIST STREET SE, SUITE 200
 SALEM, OREGON, 97302
 PHONE (503) 586-7401

PORTLAND RETIREMENT RESIDENCE
 802 OCEAN AVE. PORTLAND, MAINE 04103

PLUMBING DETAILS AND SCHEDULES

DATE: 8/28/2015
 REVISED DATE: 9/22/2015

SHEET M2.2 PLUMBING