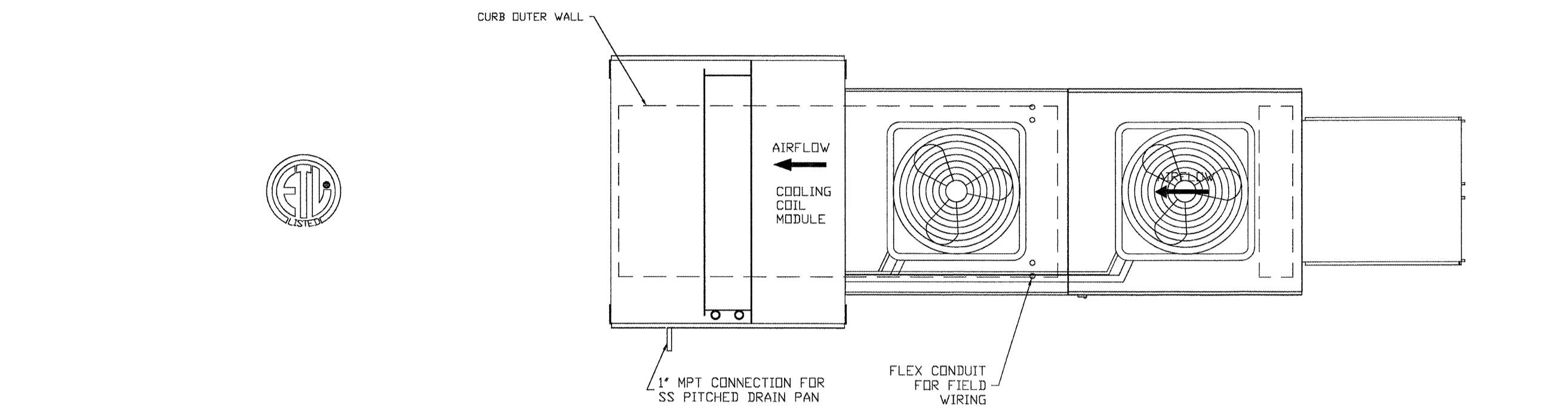
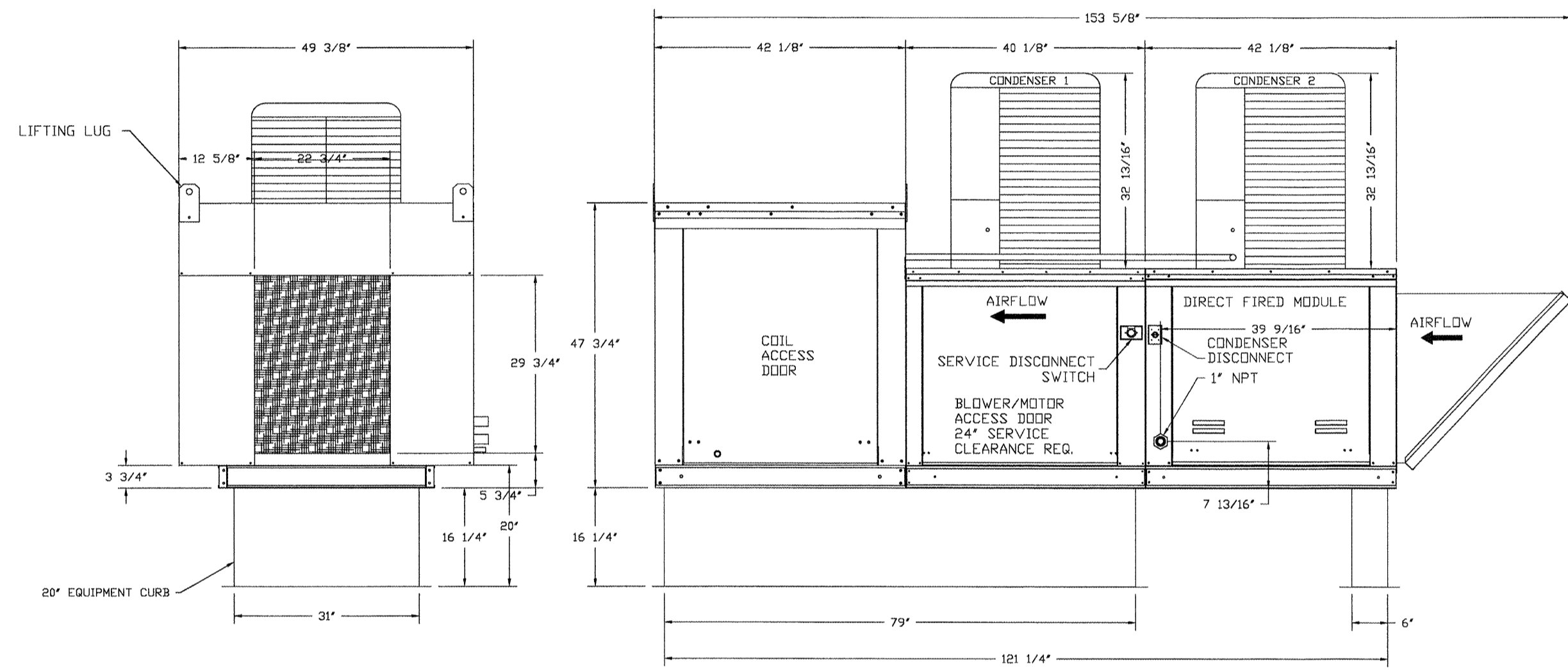


- FAN #1 A2-3500-G15-MPU - HEATER (MUA-1)
- DIRECT GAS FIRED HEATED MAKE UP AIR UNIT WITH 15" BLOWER
 - INTAKE HOOD WITH EZ FILTERS-LOW CFM
 - SIDE DISCHARGE - AIR FLOW RIGHT -> LEFT
 - COILING INTERLOCK RELAY, 24VAC COIL, 120V CONTACTS, LOCKS OUT BURNER CIRCUIT WHEN AC IS ENERGIZED.
 - MOTORIZED BACK DRAFT DAMPER 22 7/8" X 24" FOR SIZE 2 STANDARD & MODULAR DIRECT FIRED HEATERS W/EXTENDED SHAFTS, STANDARD GALVANIZED CONSTRUCTION, 3/4" REAR FLANGE, LIFT/BOSS ACTUATOR INCLUDED.
 - LOW FIRE START, ALLOWS THE BURNER CIRCUIT TO ENERGIZE WHEN THE MODULATION CONTROL IS IN A LOW FIRE POSITION.
 - GAS PRESSURE GAUGE, 0-35", 2 1/2" DIAMETER, 1/4" THREAD SIZE.
 - GAS PRESSURE GAUGE, 0 TO 145 INCHES WC, 2 1/2" DIAMETER, 1/4" THREAD SIZE.
 - CONTROL PANEL ENCLOSURE HEATER, INCLUDES 200V, 120V HEATER AND THERMOSTAT (60 DEGREE SETTING), REQUIRES CONVENIENCE OUTLET OPTION (POWER BY OTHERS), RECOMMENDED FOR WINTER DESIGN TEMPERATURE LESS THAN 0°F.
 - GFCI 15 AMP CONVENIENCE OUTLET FOR HEATER ENCLOSURE, POWER SUPPLY BY OTHERS - INCLUDES RECEPTACLE AND J BOX.
 - EX COOLING INTAKE AIR THERMOSTAT AND RELAYS MOUNTED IN UNIT - SET POINT FOR THERMOSTAT SHOULD BE 65°F.
 - EXTRA SET OF V-BELTS, ONLY TO BE ORDERED AS FAN OPTION AT TIME FAN IS ORDERED.
 - FULL CRATING FOR COMMERCIAL HEATERS FOR SHIPPING.
 - SEPARATE 120VAC WIRING PACKAGE FOR MAKE-UP AIR UNITS, OPTION MUST BE SELECTED WHEN MOUNTING VFD IN PREVIOUS PANEL OR WITH DCV PACKAGE, PROVIDES SEPARATE 120VAC INPUT TO SUPPLY FAN, THIS 120V SIGNAL MUST BE RUN BY ELECTRICATION FROM DCV TO MAIN SWITCH.
 - PROFILE PLATE CONFIGURATION FOR SIZE 2 DIRECT FIRED UNIT FOR LOW CFM APPLICATIONS.
 - 7.5 TON BURNER CIRCUIT (25/50) MODULAR PACKAGED COILING OPTION FOR SIZE 2 MODULAR PACKAGED UNIT, INCLUDES CONDENSER, DX COIL, FILTER/DRYER KIT, THERMAL EXPANSION VALVE, R410A REFRIGERANT, AND REFRIGERANT PIPING, 62,700 BTU/H COIL, NOT BUILT WITH OPPOSITE SIDE CONTROLS OR OPPOSITE AIRFLOW DIRECTION, CONDENSERS REQUIRE SEPARATE 208V, 3 PHASE POWER SUPPLY, COIL = 3E2101C.
 - SIZE 2 COILING COIL COATING OPTION FOR STANDARD MPU, DX AND CHILLED WATER COILS, ADDS 5-6 WEEK LEAD TIME.

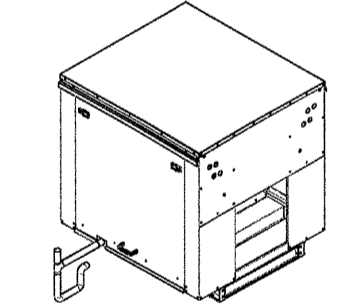
SUPPLY SIDE HEATER INFORMATION
 WINTER TEMPERATURE = -10°F, TEMP. RISE = 70°F.
 BTU/H CALCULATED BY STANDARD AIR DENSITY
 OUTPUT BTU/H AT ALTITUDE OF 0.0 Ft. = 261874
 INPUT BTU/H AT ALTITUDE OF 0.0 Ft. = 283993



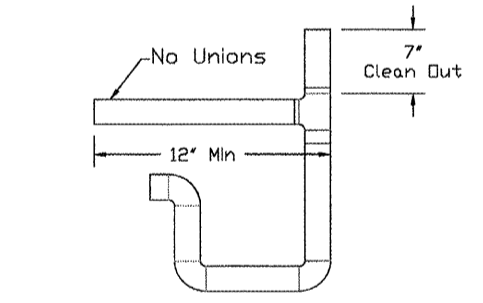
ACCESS PANELS ON LEFT SIDE WHEN FACING AIR INLET



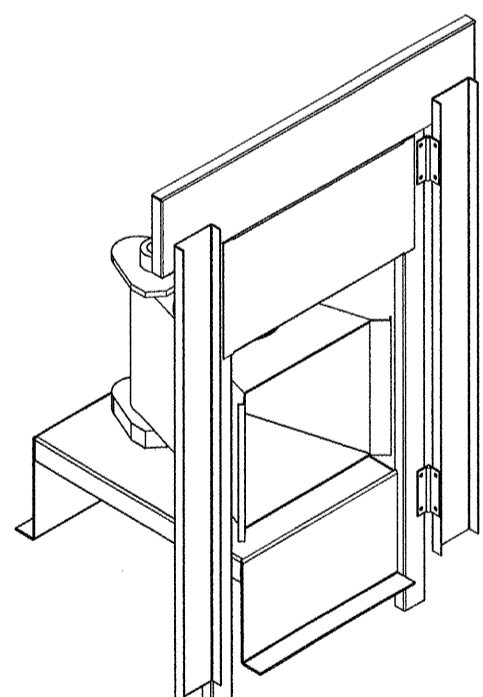
Typical Drain Trap Install



Recommended Cooling Coil Drain Trap Configuration



- Notes:
 1) diameter PVC pipe only
 2) Use only low profile couplings
 3) Add clean out as shown



Direct Fired (DF) Profile Plate Assembly

Direct Fired Profile Plate Specifications:

Description:

Direct fired burners shall have patented (US Patent No: US6629523B2), self-adjusting profile plates designed to ensure proper air velocity and pressure drop across the burner. Profile plates shall allow burners to achieve clean combustion by limiting by-product levels to a maximum of 5ppm of carbon monoxide (CO), and 0.5ppm of nitrogen dioxide (NO2).

Application:

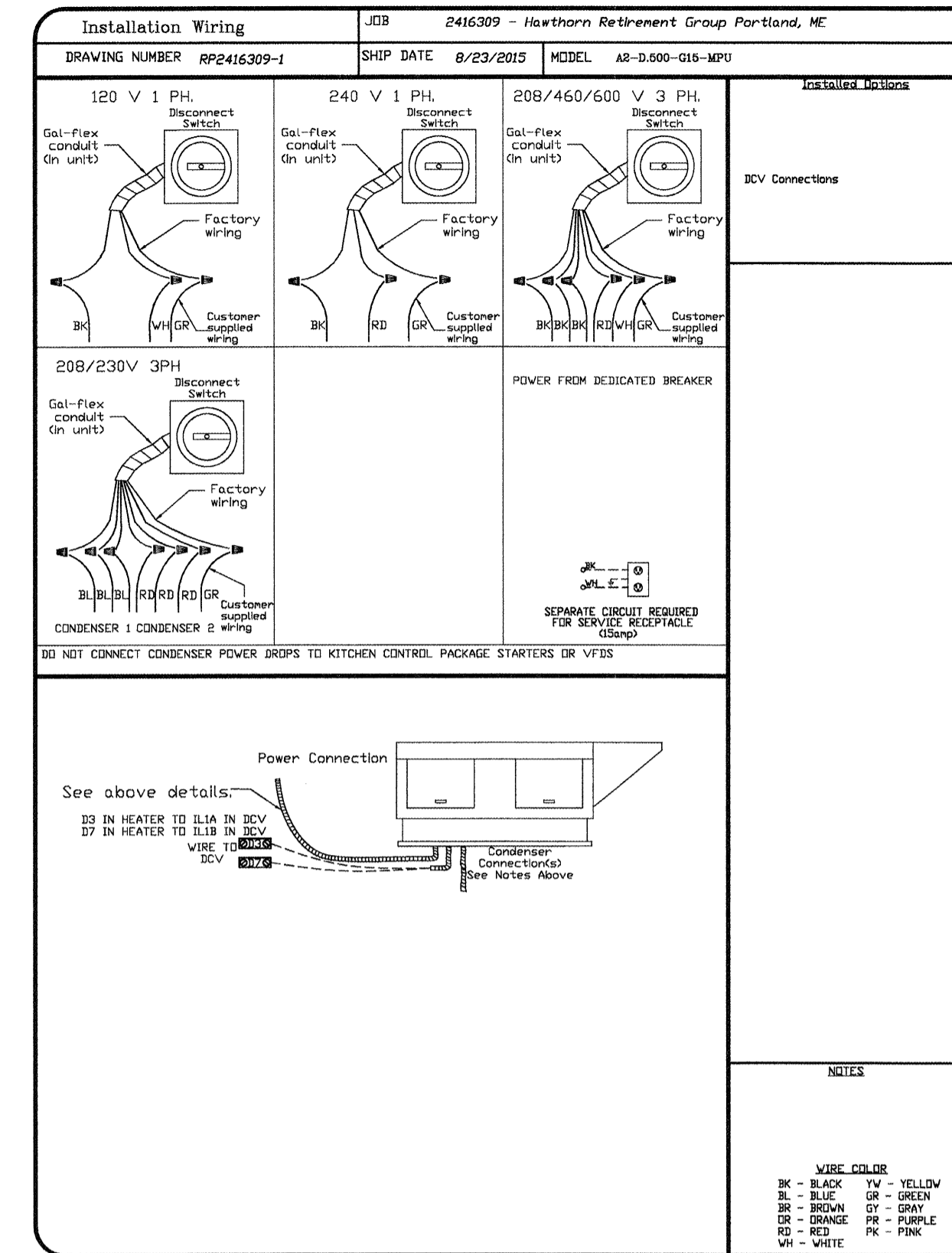
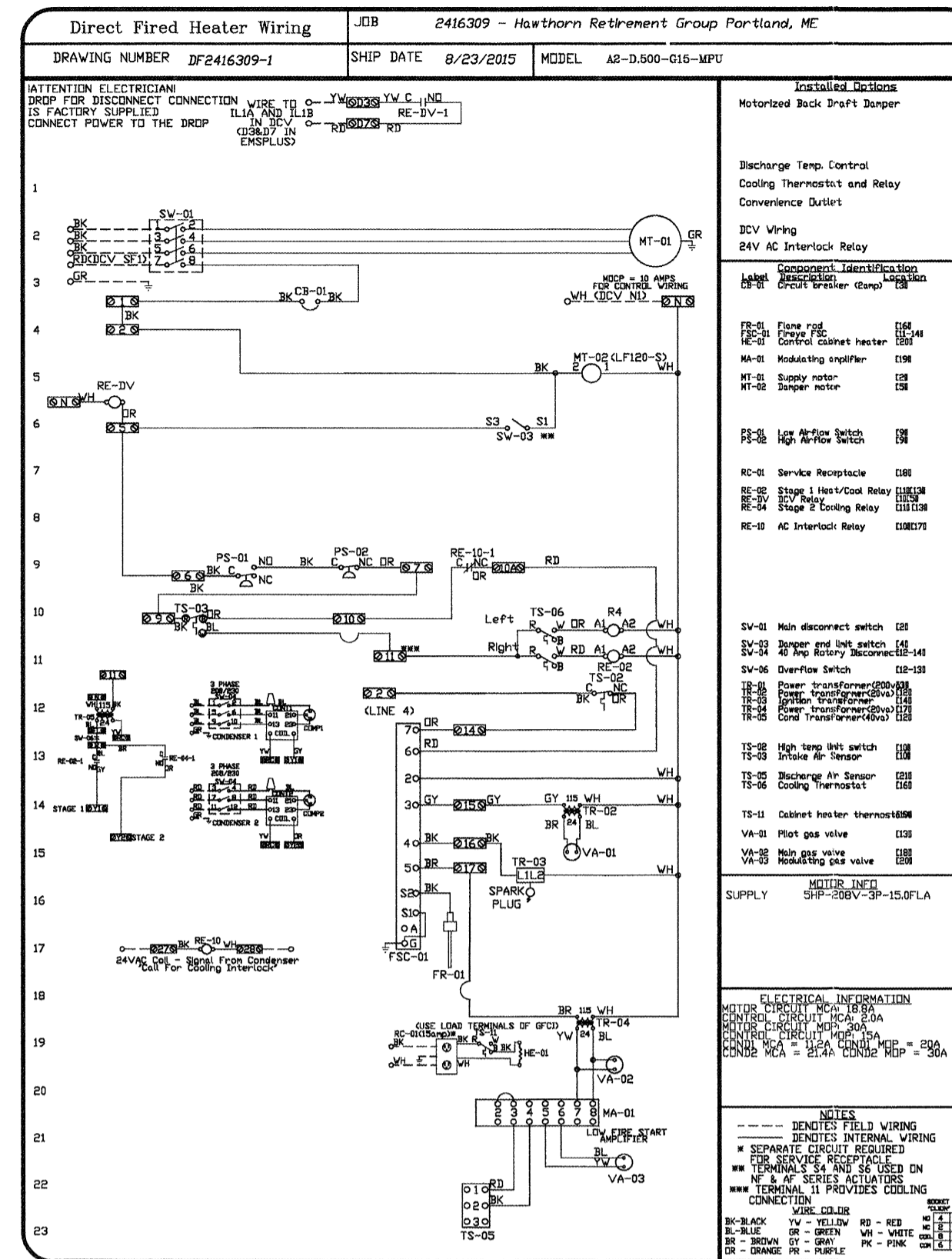
Spring-loaded burner profile plates are engineered to automatically react to the momentum of a fresh air stream, without the need for any motors or actuators to mechanically adjust them. With this feature, all DF units are designed for demand control ventilation (DCV) requirements.

Certifications:

All profile plate assemblies shall be included in the DF unit's ETL listing and comply with combined safety standards ANSI Z83.4 and CSA 3.7 (non-recirculating DF heaters) and ANSI Z83.18 (recirculating DF heaters).

General Construction:

- Profile plates shall be formed from G90 galvanized steel.
- Profile plates shall vary in size per unit.
- Profile plates shall be mounted along the same plane as the discharge of the burner.
- Design shall incorporate properly torqued, permanently mounted spring hinges.
- Spring hinges shall be made from plated steel.



REVISIONS	
DESCRIPTION	DATE

CAPTIVE

OREGON OFFICE
 2702 NE 114th Ave., Suite 2, Vancouver, WA, 98684 PHONE: (509) 826-5416 FAX: (509) 227-5883 EMAIL: rep@captivewh.com

Hawthorn Retirement Group Portland, ME
 PORTLAND, ME, 04101

DATE: 8/23/2015
 DWG.#: 2416309
 DRAWN BY: Sean Elias
 SCALE: 3/4" = 1'-0"
 MASTER DRAWING

SHEET NO.
4