

HOOD INFORMATION - Job#2416309											
HOOD NO.	TAG	MODEL	LENGTH	MAX. COOKING TEMP.	TOTAL EXHA. CFM	EXHAUST RISEN/UM (RISERS)			TOTAL SUPPLY CFM	HOOD CONSTRUCTION	HOOD CNFTE.
						WIDTH	LENG.	DIA.			
1	50 KITCHEN	5424 NB-2	16' 0.00"	600 Deg	3840			16"	1920	-0.599'	0
2	50 KITCHEN LEFT	286 MISC-PSP	8' 6.00"	300 Deg	0			16"	1920	-0.599'	1728
3	50 KITCHEN RIGHT	286 MISC-PSP	8' 6.00"	300 Deg	0			16"	1920	-0.599'	1728
4	DISHWASHER	4818 VHB-G	4' 0.00"	700 Deg	600			12"	600	-0.066'	0

HOOD INFORMATION																
HOOD NO.	TAG	TYPE	QTY.	HEIGHT	LENGTH	EFFICIENCY @ 9 MICRONS	QTY.	TYPE	WIRE GUARD	LOCATION	UTILITY CABINETS(S)			FIRE SYSTEM PIPING	HOOD HANGING WGT	
											FIRE SYSTEM	ELECTRICAL	SWITCHES			
1	50 KITCHEN	Captrate Solo Filter	12	20"	16"	93% See Filter Spec.	8	L55 Series E26	ND	Left			DCV-1111	1 Light 1 Fan	NO	1014 LBS
2	50 KITCHEN LEFT						0								NO	111 LBS
3	50 KITCHEN RIGHT						0								NO	111 LBS
4	DISHWASHER						0								NO	129 LBS

HOOD OPTIONS											
HOOD NO.	TAG	OPTION									
1	50 KITCHEN	INSULATION FOR TOP OF HOOD INSULATION FOR BACK OF HOOD FINISHED BACK - ISL/REV INSTALL 192.00' Long RISER SENSOR INSTALL 3IN DBL RIGHT VERTICAL END PANEL 27" Top Width, 21" Bottom Width, 80" High Insulated 4' Legs 304 SS LEFT VERTICAL END PANEL 27" Top Width, 21" Bottom Width, 80" High Insulated 4' Legs 304 SS									

FOR QUESTIONS, CALL SEAN ELIAS TECHNICAL SALES
PHONE: (503) 567-1190
FAX: (503) 227-5983
EMAIL: sean.elias@captiveaire.com

CAPTIVE-AIRE HOODS ARE BUILT IN COMPLIANCE WITH UL 710 AND NFPA 96 AND ARE RECOGNIZED BY ONE OR MORE OF THE FOLLOWING:

ETL SANITATION LISTED
ETL LISTED FILE# 3054804-001

PERFORATED SUPPLY PLENUM(S)											
HOOD NO.	TAG	POS.	LENGTH	WIDTH	HEIGHT	TYPE	RISERS(S)			WEIGHT (LBS)	SONES
							WIDTH	LENG.	DIA.		
2	50 KITCHEN LEFT	Front	102'	28"	6"	MJA	12"	20"	576	0.180"	
3	50 KITCHEN RIGHT	Front	102'	28"	6"	MJA	12"	20"	576	0.180"	

EXHAUST FAN INFORMATION - Job#2416309												
FAN UNIT NO.	TAG	FAN UNIT MODEL #	CFM	ESP.	RPM	H.P.	B.H.P.	Ø	VOLT	FLA	WEIGHT (LBS)	SONES
2	DVX-1	DV3HFA	600	1.100	1583	0.333	0.2700	1	115	4.4	62	13

CONDENSER DETAILS												
FAN UNIT NO.	TAG	FAN UNIT MODEL #	CONDENSER NO.	TONNAGE	VOLTAGE	PHASE	FREQUENCY	MCA	RLA	MAX. FUSE SIZE	MIN. WIRE SIZE	SEER
1	MUA-1	A2-D500-G15-MPU	1	5	208-230	3 PHASE	60 Hz	21.4 Amps	17.4 Amps	30 Amps	12 AWG	14

MUA FAN INFORMATION - Job#2416309																							
FAN UNIT NO.	TAG	FAN UNIT MODEL #	BLDWR	HOUSING	CFM	ESP.	RPM	H.P.	B.H.P.	Ø	VOLT	FLA	COOLING COIL ENTERING DB TEMP.	COOLING COIL LEAVING DB TEMP.	COOLING COIL ENTERING WB TEMP.	COOLING COIL LEAVING WB TEMP.	TOTAL CAPACITY	SENSIBLE CAPACITY	LATENT CAPACITY	WEIGHT (LBS)	SONES	BURNER EFFICIENCY(%)	
1	MUA-1	A2-D500-G15-MPU		G15-P3	A2-D500	3456	1.000	1085	5.000	2.7690	3	208	15.0	84.0°F	70.0°F	72.0°F	65.0°F	57.9 MBH	44.3 MBH	13.6 MBH	1683	21	92

GAS FIRED MAKE-UP AIR UNIT(S)						
FAN UNIT NO.	TAG	ACTUAL AIR BENSITY?	INPUT BTUS	OUTPUT BTUS	TEMP. RISE	REQUIRED INPUT GAS PRESSURE
1	MUA-1	NO	283993	261274	70 deg F	7 in. w.c. - 14 in. w.c.

FAN OPTIONS	
FAN UNIT NO.	TAG
1	MUA-1
2	DVX-1

OPTION (Qty. - Desc.)

- 1 - AC Interlock Relay - 24VAC Coil
- 1 - Motorized Backdraft Damper for A2-D Housing
- 1 - Low Fire Start
- 1 - Inlet Pressure Gauge, 0-35"
- 1 - Manifold Pressure Gauge, -5 to 15" wc
- 1 - Control panel enclosure heater. Recommended for winter design temperature less than 0°F.
- 1 - Convenience Outlet (GFCI), 15 amp - Power Supply by Others
- 1 - Cooling Thermostat and Relay (Not req for evap)
- 1 - Extra Set of Belts
- 1 - Full Grating for Commercial Heater
- 1 - Separate 120V Wiring Package (Required and used only for DCV or Prewire with VFD) - Three Phase Only
- 1 - Size 2 Direct Fired Heater Low CFM Profile Package. Used on Heaters under 2500 CFM.
- 1 - 75 Ton 2 Circuit (2.5/5) Modular Packaged Cooling Option for Size 2 MUA (2,700 to 4,500 CFM), 208V/230V, 3 phase. Cooling Thermostat or Programmable Stat Required for Proper Operation.
- 1 - Size 2 Cooling Coil Ecoating option for standard MPU, DX and Chilled Water Coils.
- 1 - SCR-11 Bird Screen
- 1 - ECM Wiring Package for Exhaust Fans or Untempered Supply Fans - Manual Speed Control.
- 1 - Wallmount 20.5' sq. x 2'
- 1 - Wall Mount Construction for Fan
- 1 - Ship Loose Disconnect for Remote Mount.

CURB ASSEMBLIES				
NO.	DN	FAN	WEIGHT	ITEM
1	# 1	27 LBS	Ball	6.000"W x 31.000"L x 20.000"H
1	# 1	76 LBS	Curb	31.000"W x 79.000"L x 20.000"H Insulated

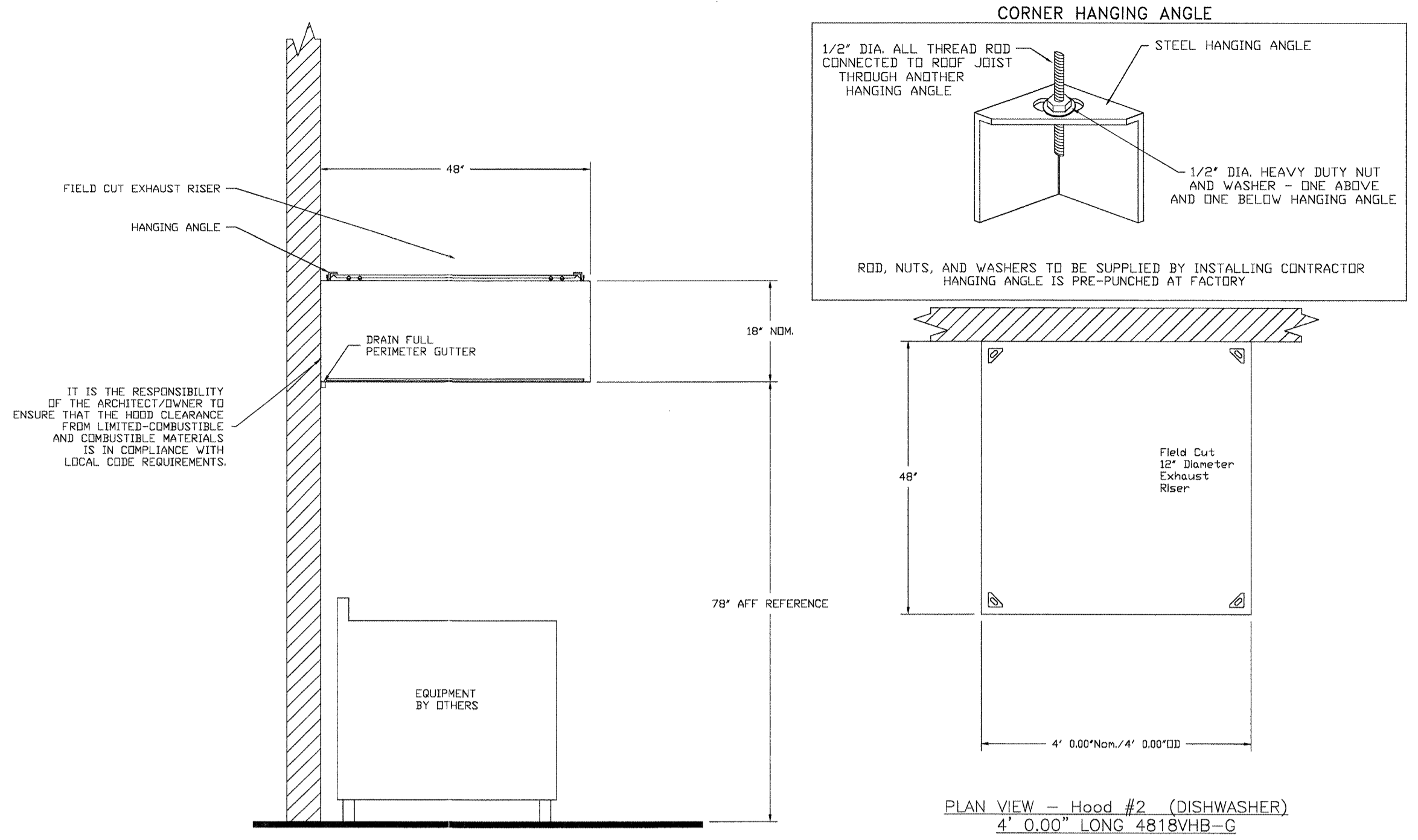
ELECTRICAL PACKAGES - Job#2416309																	
NO.	TAG	PACKAGE #	LOCATION	SWITCHES		OPTION	FANS CONTROLLED										
				LOCATION	QUANTITY		FAN TAG	TYPE	Ø	H.P.	VOLT	FLA					
1	51	DCV-1111	Utility Cabinet Left	Ship Loose w/ Prewire	1 Light 1 Fan	Smart Controls DCV	MUA-1	Supply	3	5.000	208	15.0	Exhaust	3	3.000	208	9.5

System Design Verification (SDV)

If ordered, CAS Service will perform a System Design Verification (SDV) once all equipment has had a complete start up per the Operation and Installation Manual. Typically, the SDV will be performed after all inspections are complete.

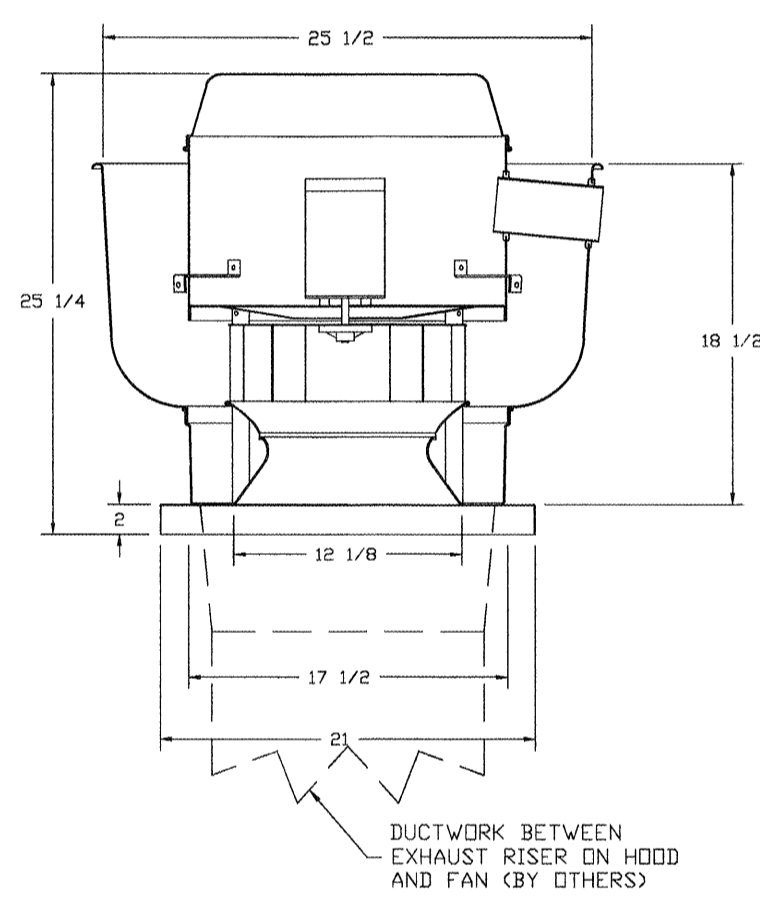
Any field related discrepancies that are discovered during the SDV will be brought to the attention of the general contractor and corresponding trades on site. These issues will be documented and forwarded to the appropriate sales office. If CAS Service has to resolve a discrepancy that is a field issue, the general contractor will be notified and billed for the work. Should a return trip be required due to any field related discrepancy that cannot be resolved during the SDV, there will be additional trip charges.

During the SDV, CAS Service will address any discrepancy that is the fault of the manufacturer. Should a return trip be required, the general contractor and appropriate sales office will be notified. There will be no additional charges for manufacturer discrepancies.



SECTION VIEW - MODEL 4818VHB-G HOOD - #2 (DISHWASHER)

FAN #3 DUB31FA - EXHAUST FAN (DUX-1)



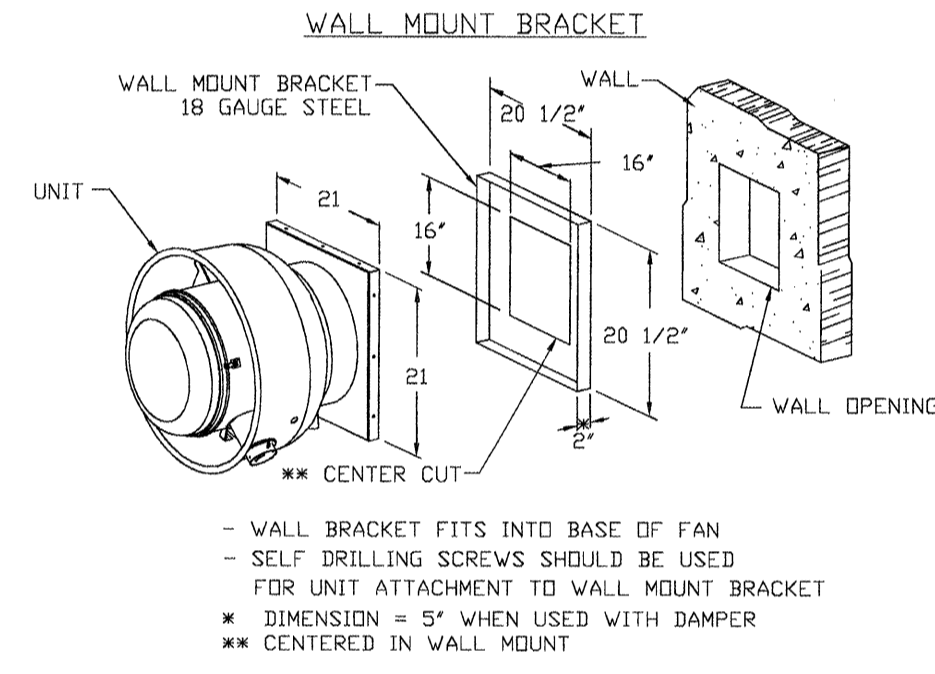
FEATURES:

- ROOF MOUNTED FANS
- RESTAURANT MODEL
- UL 710
- VARIABLE SPEED CONTROL
- INTERNAL WIRING
- WEATHERPROOF DISCONNECT
- THERMAL OVERLOAD PROTECTION (SINGLE PHASE)
- HIGH HEAT OPERATION 300°F (149°C)

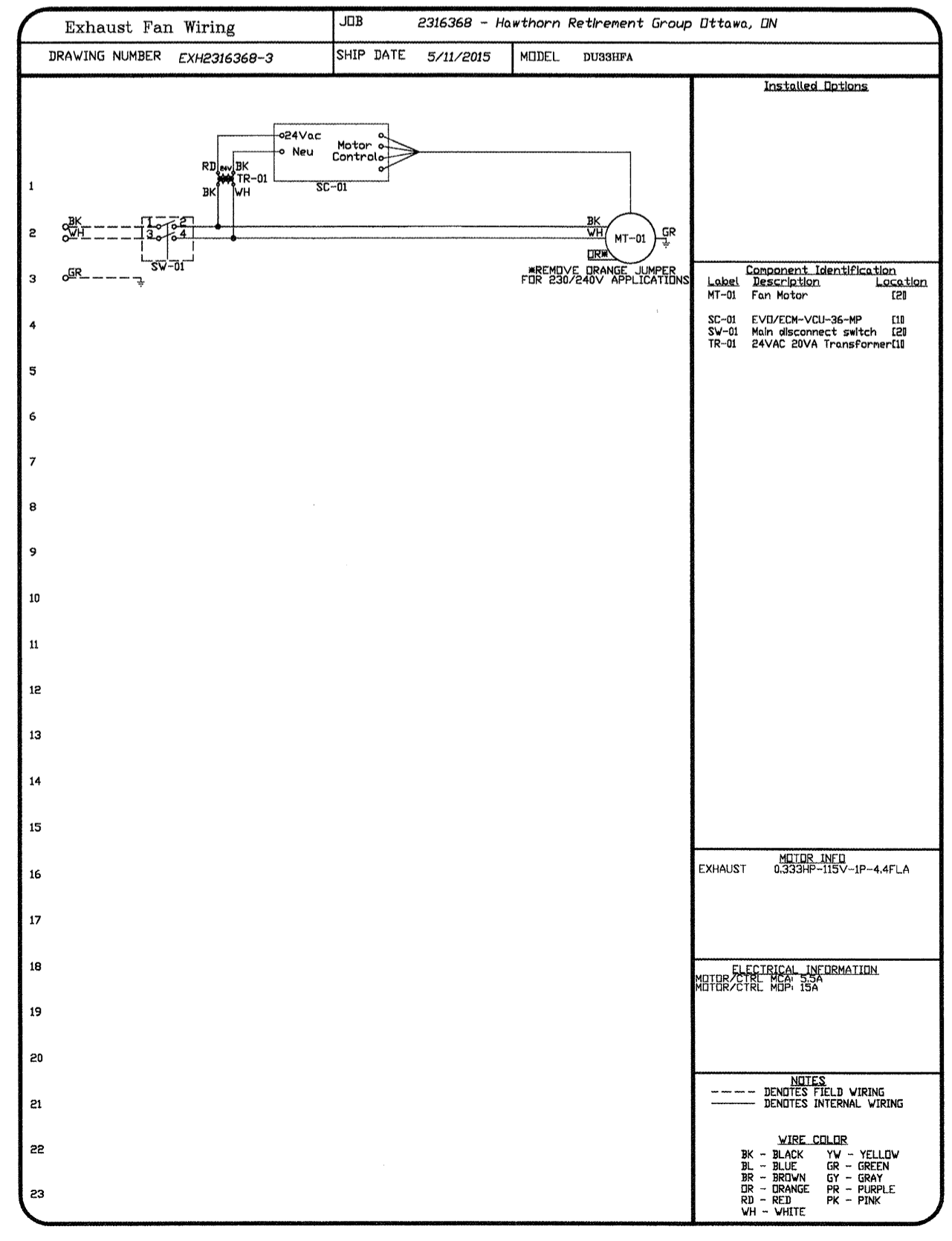
NORMAL TEMPERATURE TEST
EXHAUST FAN MUST OPERATE CONTINUOUSLY WHILE EXHAUSTING AIR AT 300°F (149°C) UNTIL ALL FAN PARTS HAVE REACHED THERMAL EQUILIBRIUM AND WITHOUT ANY DETRIMENTARY EFFECTS TO THE FAN WHICH WOULD CAUSE UNSAFE OPERATION.

DETAILS:

- SCR-11 BIRD SCREEN
- ECM WIRING PACKAGE FOR EXHAUST FANS OR UNTEMPERED SUPPLY FANS - MANUAL SPEED CONTROL
- WALLMOUNT BODY 20.5' SQ. X 2'
- WALL MOUNT CONSTRUCTION FOR FAN
- SHIP LOOSE DISCONNECT FOR REMOTE MOUNT.



- WALL BRACKET FITS INTO BASE OF FAN
- SELF DRILLING SCREWS SHOULD BE USED FOR UNIT ATTACHMENT TO WALL MOUNT BRACKET
- DIMENSION = 5" WHEN USED WITH DAMPER
- ** CENTERED IN WALL MOUNT



CAPTIVE
 OREGON OFFICE
 2705 NE 11th Ave. Suite 2, Vancouver, WA 98684
 PHONE: (503) 628-5418 FAX: (503) 227-5983
 EMAIL: reg@0@captiveaire.com www.captiveaire.com

REVISIONS	
NO.	DESCRIPTION

Hawthorn Retirement Group Portland, ME
 PORTLAND, ME, 04101
 DATE: 8/23/2015
 DWG.#: 2416309
 DRAWN BY: Sean Elias
 SCALE: 3/4" = 1'-0"
 MASTER DRAWING
 SHEET NO. 1