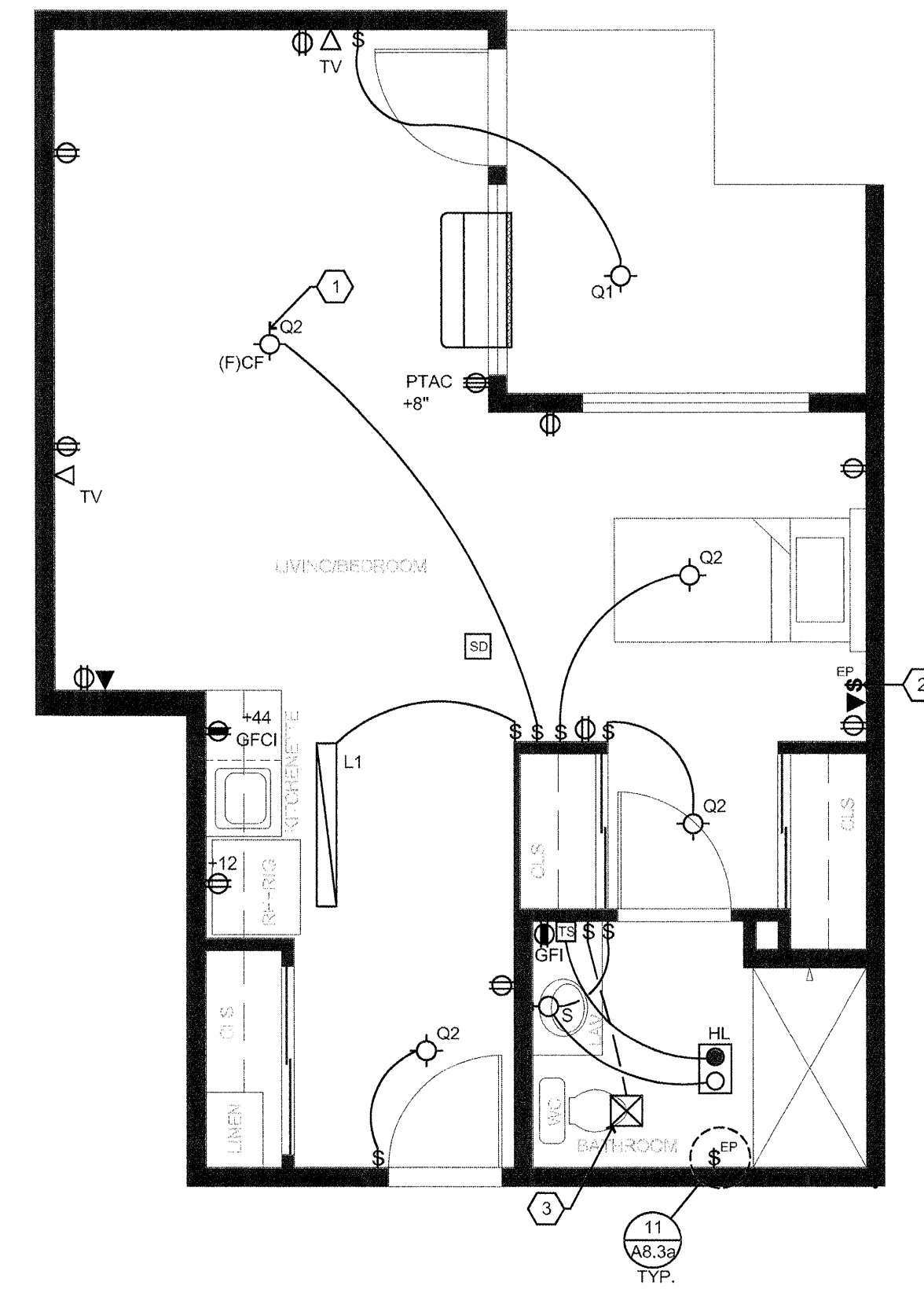
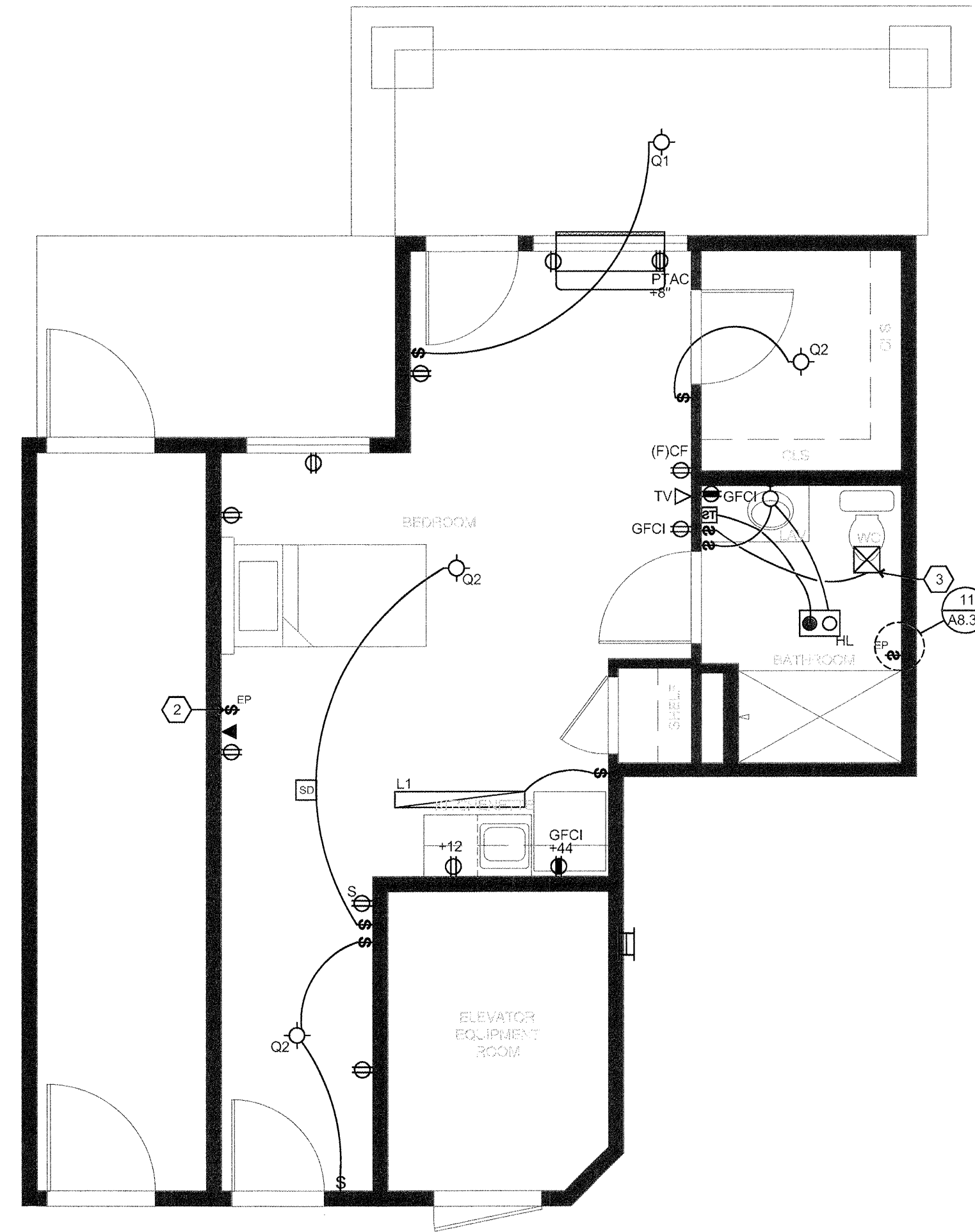


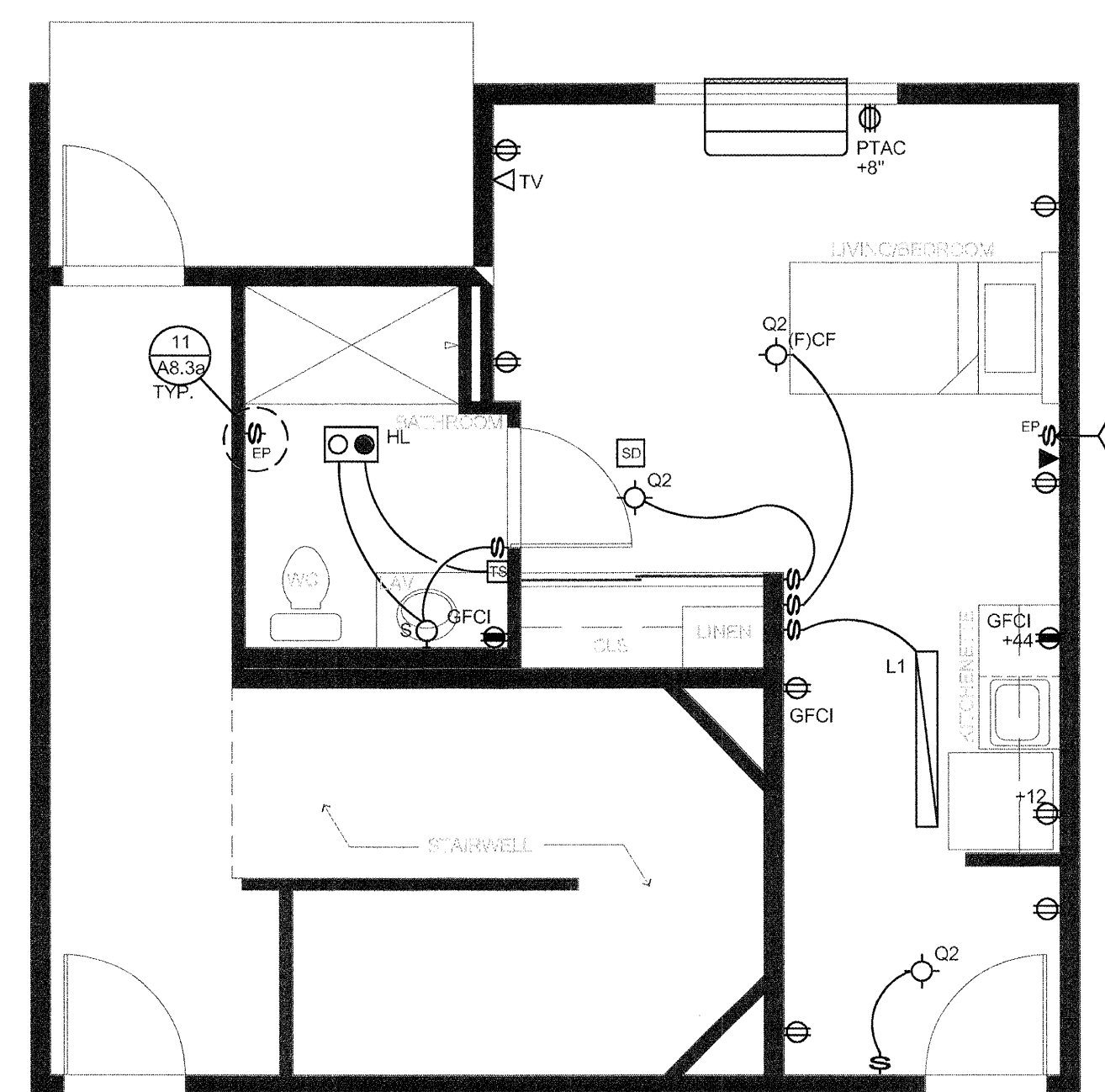
1 **A7**
SCALE: 1/4"=1'-0"



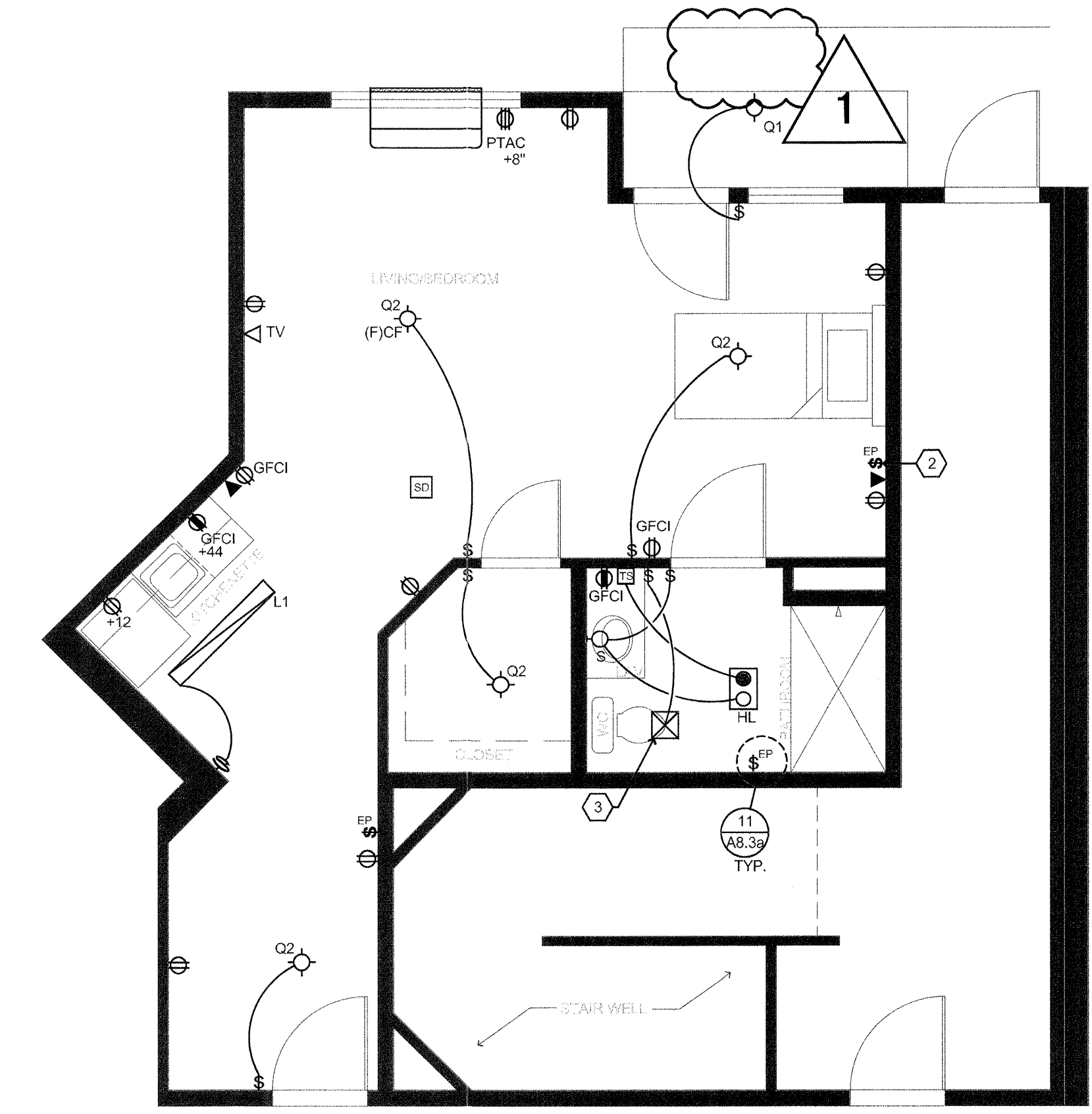
4 **A10**
SCALE: 1/4"=1'-0"



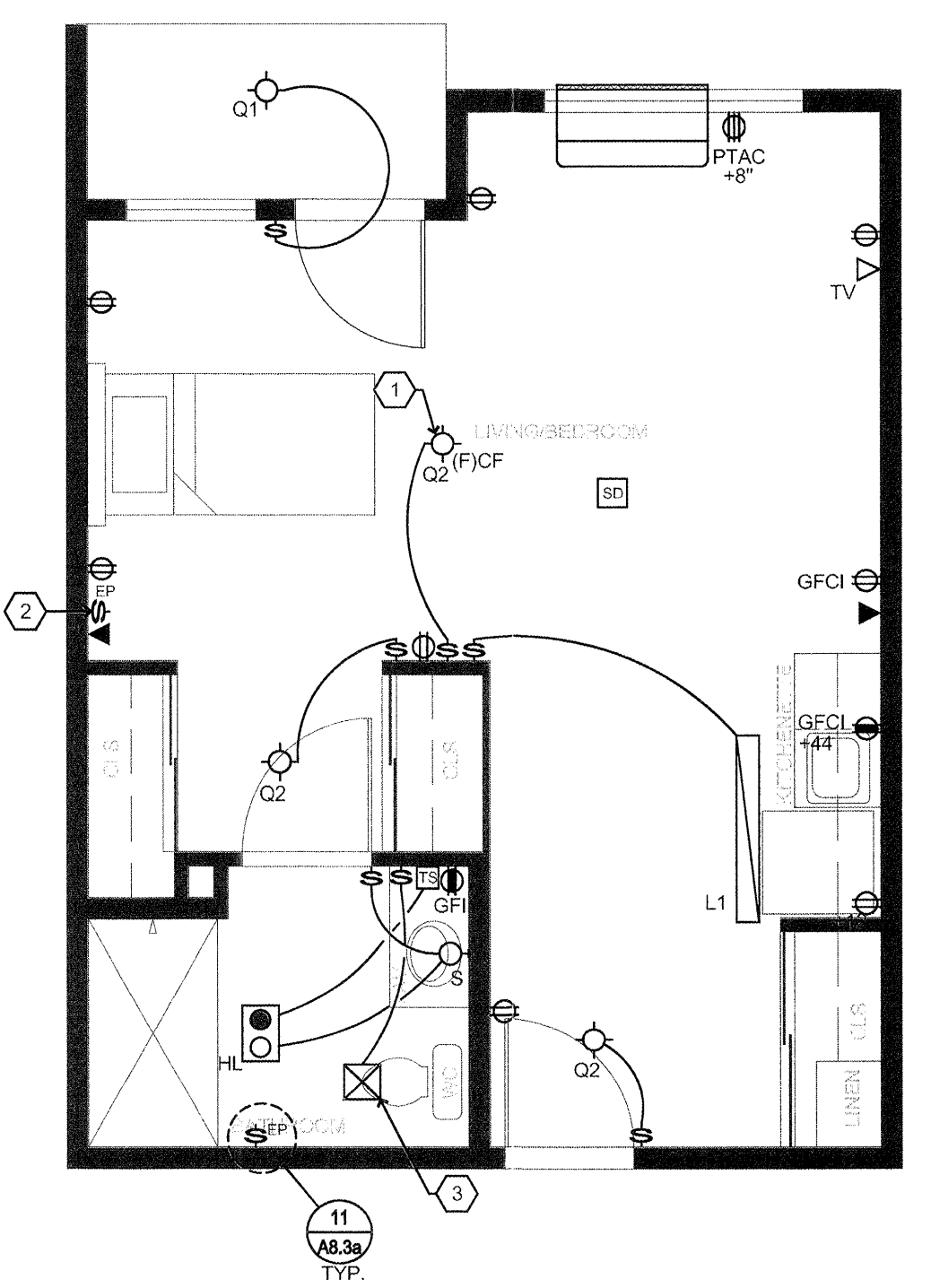
2 **A8**
SCALE: 1/4"=1'-0"



5 **A11**
SCALE: 1/4"=1'-0"



3 **A9**
SCALE: 1/4"=1'-0"

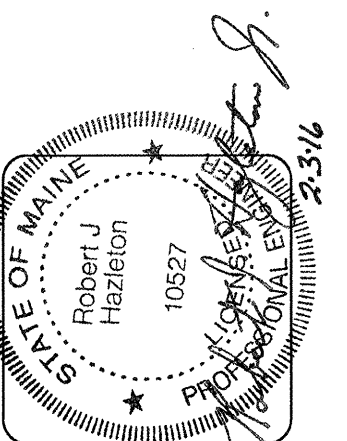


6 **A12**
SCALE: 1/4"=1'-0"

- GENERAL NOTES:**
- REFER TO 2/A8.3a FOR TYPICAL SUITE BATH LAYOUT.
 - FRAME AND WIRE FOR FUTURE PTAC RECEPTACLE ON RIGHT SIDE OF BASEBOARD LOCATION. TO REPLACE BASEBOARD IN "C" UNIT SPARE BEDROOMS.
 - REFER TO ELECTRICAL SCHEDULE NOTES / SPECIFICATIONS ON SHEET E2.1.
 - REFER TO ELECTRICAL DETAILS ON SHEET E2.2b.
 - INSTALL G.F.C.I. RECEPTACLE IN UNIT BATHROOMS AND AT BAR. RECEPTACLES WITHIN 6' OF SINK EDGE SHALL BE G.F.C.I. PROTECTED.
 - FOR SUITE CIRCUITING SEE POWER SHEETS AND E2.3 SHEETS.
 - PHONE JACKS IN OFFICE/MARKETING, MANAGER, CO-MANAGER SHALL BE DUPLEX. SEE SECTION 1.4, DWG. E4.1. EACH JACK SHOULD HOME RUN TO PHONE BOARD.
 - INSTALL PTAC RECEPTACLE ON RIGHT SIDE OF UNIT, WITHIN 12" OF SLEEVE.
 - INTERCONNECT SUITE SMOKE DETECTORS. CIRCUIT SUITE SMOKE DETECTORS TO SUITE LIGHTING CIRCUIT.
 - SEE ELECTRICAL POWER SHEETS FOR BASEBOARD SIZING.
 - PROVIDE BLOCKING AND LISTED OUTLET BOX FOR THE INSTALLATION OF A FUTURE CEILING FAN AT THE LIGHTING LOCATIONS INDICATED WITH A "(F)CF" DESIGNATION.

- ELECTRICAL LEGEND**
- SWITCH
 - 3 THREE WAY SWITCH
 - OC AUTOMATIC WALL SWITCH
 - EP WIRELESS EMERGENCY PULL SWITCH, COORDINATE LOCATION WITH TEL-TRON DRAWINGS.
 - SC FAN SPEED CONTROL SWITCH
 - RECEPTACLE
 - 208 VOLT RECEPTACLE
 - ARC-FAULT BREAKER CIRCUIT (AFCI).
 - SPLIT RECEPTACLE C/W 2 CCTS. RECEPTACLE AT COUNTER
 - TV
 - TELEPHONE
 - THERMOSTAT
 - SPECIAL CONNECTION
 - CEILING FAN (CF-1) WITH LISTED BOX. SEE E2.1 LIGHTING SCHEDULE.
 - INTERCONNECTED 120V COMBINATION SMOKE DETECTOR AND CARBON MONOXIDE ALARM. GENTEX GN-503.
 - INTERCONNECTED 120V SMOKE DETECTOR WITH STROBE. GENTEX T139 CSC.
 - INTERCONNECTED 120V CARBON MONOXIDE ALARM. GENTEX CO1209.
 - "E" INDICATES WIRING TO EMERGENCY POWER. SEE MECH. EF-3 ROOM TO ROOM FAN
 - PTAC UNIT
 - (H) HEAT/ (L) LIGHT UNIT (SEE DETAIL 6/E2.2b, 7/A8.8 FOR FIXTURE PROTECTION)
 - LIGHT FIXTURES. SEE LIGHTING SCHEDULE ON E2.1
 - LIGHT FIXTURE WITH LISTED BOX FOR FUTURE CEILING FAN. SEE GENERAL NOTE 11.
 - "EF-5" BY MECH (SEE M4.2)
 - TIMER SWITCH (15 MIN. TURN-TYPE TIMER)
 - DATA PORT
 - HEATER
 - GFCI / GFI GROUND FAULT CIRCUIT INTERRUPTER
 - FLUORESCENT UNDER CABINET LIGHT.

- KEYED NOTES**
- REPLACE TYPE "O2" FIXTURE WITH TYPE "CF1" CEILING FAN ON UPPER FLOOR VAULTED UNITS. SEE LIGHTING PLANS FOR LOCATION OF VAULTED UNITS. (SEE DETAIL 6/7E5.1)
 - PROVIDE JUNCTION BOX AT 48" A.F.F. FOR EMERGENCY PULL SWITCH AND (1) FPLR-SHEILED 18-4 CABLE FROM BEDROOM SMOKE DETECTOR. RELAY TO J-BOX AT THIS LOCATION ONLY. ADDITIONAL LOCATIONS WILL BE SURFACE MOUNT.
 - COORDINATE WITH MECHANICAL IF SUITE BATHROOM EXHAUST FAN WILL BE PROVIDED. IF NO FAN IS PROVIDED ELIMINATE SWITCH AND ELECTRICAL CONNECTION TO FAN



lenity
architecture
3150 Kettle Court SE, Salem, Oregon 97302
PHONE (503) 599-0585

COLSON AND COLSON
GENERAL CONTRACTOR, INC.
2280 MCGILCHRIST STREET SE, SUITE 200
SALEM, OREGON, 97302
PHONE (503) 586-7401

PORTLAND
RETIREMENT RESIDENCE
802 OCEAN AVE. PORTLAND, MAINE 04103

ELECTRICAL
ACCESSIBLE
SUITE PLANS

DATE
8/28/2015

REVISED DATE
9/22/2015

SHEET
E5.3

www.l1192218.07 All rights reserved. All other trademarks are the property of their respective owners. 8/28/2015 10:00 AM