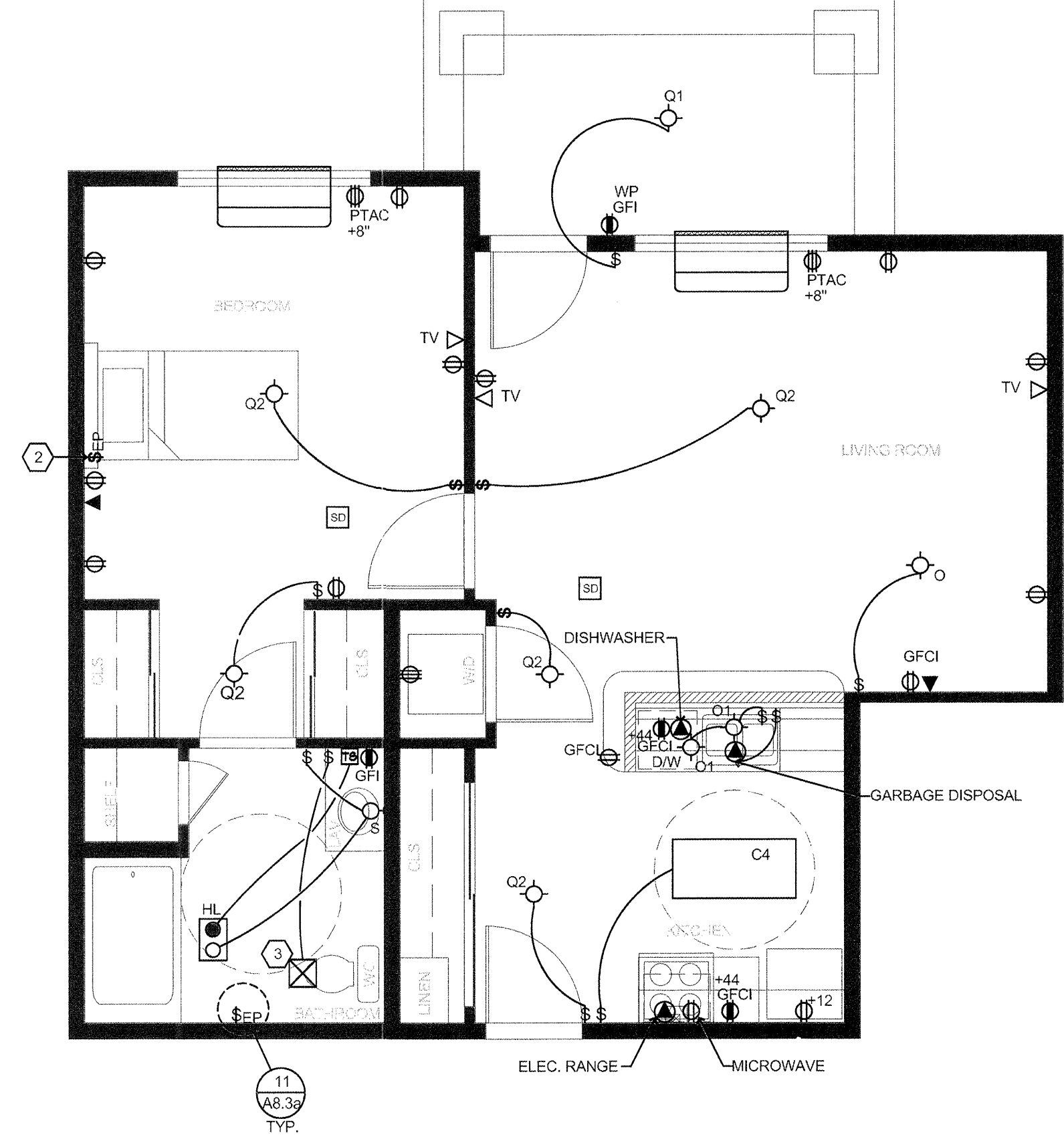


**OFFICE / MARKETING**

SCALE: 1/4" = 1'-0"



**CO-MANAGER**

SCALE: 1/4" = 1'-0"

**GENERAL NOTES:**

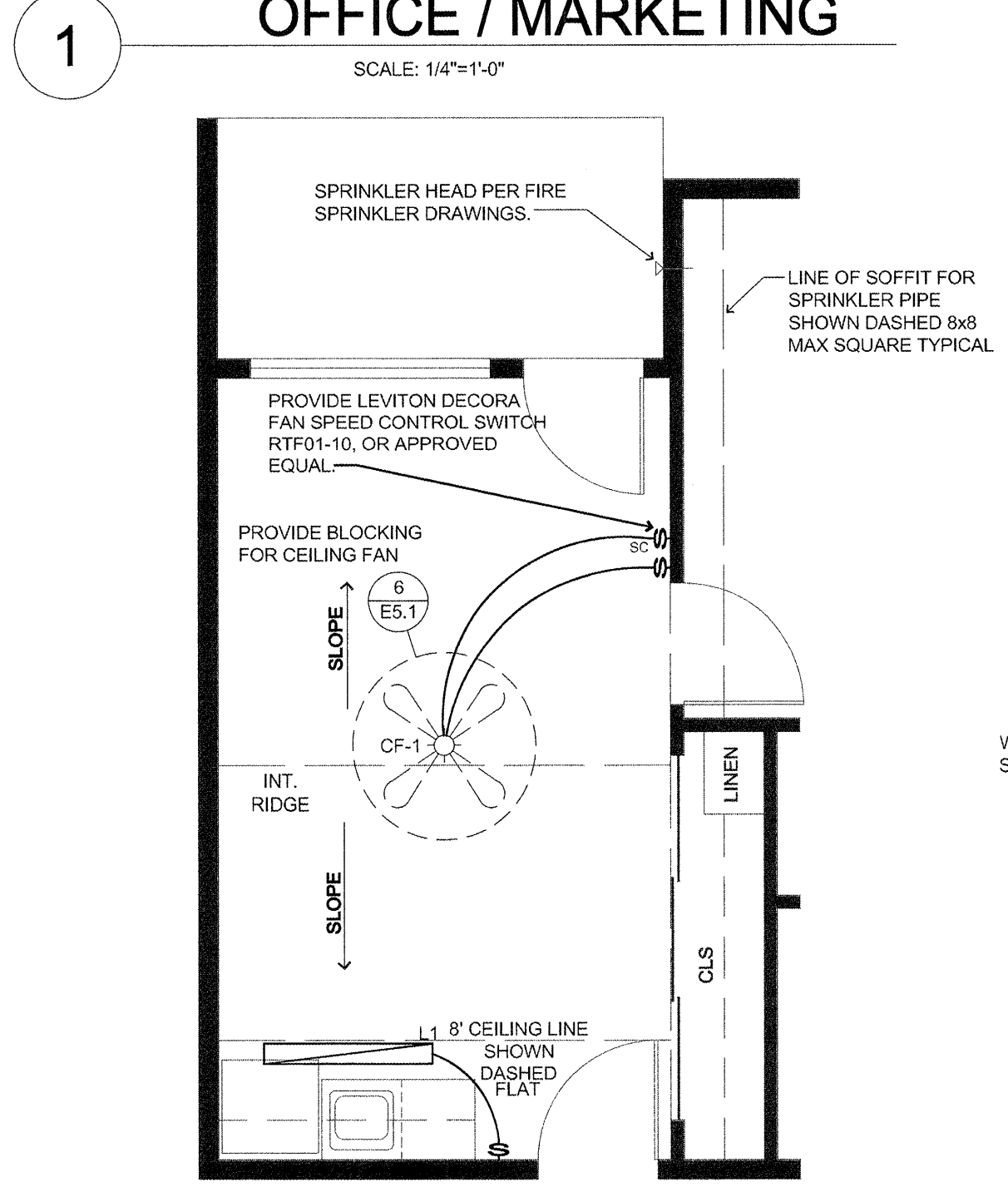
- REFER TO 2/A8.38 FOR TYPICAL SUITE BATH LAYOUT.
- FRAME AND WIRE FOR FUTURE PTAC RECEPTACLE ON RIGHT SIDE OF BASEBOARD LOCATION. TO REPLACE BASEBOARD IN "C" UNIT SPARE BEDROOMS.
- REFER TO ELECTRICAL SCHEDULE NOTES / SPECIFICATIONS ON SHEET E2.1.
- REFER TO ELECTRICAL DETAILS ON SHEET E2.2b.
- INSTALL G.F.C.I. RECEPTACLE IN UNIT BATHROOMS AND AT BAR. RECEPTACLES WITHIN 6" OF SINK EDGE SHALL BE G.F.C.I. PROTECTED.
- FOR SUITE CIRCUITING SEE POWER SHEETS AND E2.3 SHEETS.
- PHONE JACKS IN OFFICEMARKETING, MANAGER, CO-MANAGER SHALL BE DUPLEX. SEE SECTION 1.4, DWG. E4.1. EACH JACK SHOULD HOME RUN TO PHONE BOARD.
- INSTALL PTAC RECEPTACLE ON RIGHT SIDE OF UNIT, WITH IN 12" OF SLEEVE.
- INTERCONNECT SUITE SMOKE DETECTORS, CIRCUIT SUITE SMOKE DETECTORS TO SUITE LIGHTING CIRCUIT.
- SEE ELECTRICAL POWER SHEETS FOR BASEBOARD SIZING.
- PROVIDE BLOCKING AND LISTED OUTLET BOX FOR THE INSTALLATION OF A FUTURE CEILING FAN AT THE LIGHTING LOCATIONS INDICATED WITH A "FCF" DESIGNATION.

**ELECTRICAL LEGEND**

- SWITCH
- THREE WAY SWITCH
- AUTOMATIC WALL SWITCH
- WIRELESS EMERGENCY PULL SWITCH. COORDINATE LOCATION WITH TEL-TRON DRAWINGS.
- FAN SPEED CONTROL SWITCH RECEPTACLE
- 208 VOLT RECEPTACLE
- ARC-FAULT BREAKER CIRCUIT (AFCI).
- SPLIT RECEPTACLE CW 2 CTS. RECEPTACLE AT COUNTER
- TV
- TELEPHONE
- THERMOSTAT
- SPECIAL CONNECTION
- CEILING FAN (CF-1) WITH LISTED BOX. SEE E2.1 LIGHTING SCHEDULE.
- INTERCONNECTED 120V COMBINATION SMOKE DETECTOR AND CARBON MONOXIDE ALARM. GENTEX GN-503.
- INTERCONNECTED 120V SMOKE DETECTOR WITH STROBE. GENTEX T139 CSC.
- INTERCONNECTED 120V CARBON MONOXIDE ALARM. GENTEX CO1209.
- "E" INDICATES WIRING TO EMERGENCY POWER. SEE MECH. EF-3 ROOM TO ROOM FAN
- PTAC UNIT
- (H) HEAT/ (L) LIGHT UNIT (SEE DETAIL 6/E2.2b, 7/A8.8 FOR FIXTURE PROTECTION)
- LIGHT FIXTURES. SEE LIGHTING SCHEDULE ON E2.1
- LIGHT FIXTURE WITH LISTED BOX FOR FUTURE CEILING FAN. SEE GENERAL NOTE 11.
- "EF-5" BY MECH (SEE M4.2)
- TIMER SWITCH (15 MIN. TURN-TYPE TIMER)
- DATA PORT
- HEATER
- GFCI / GFI GROUND FAULT CIRCUIT INTERRUPTER
- FLUORESCENT UNDER CABINET LIGHT.

**KEYED NOTES**

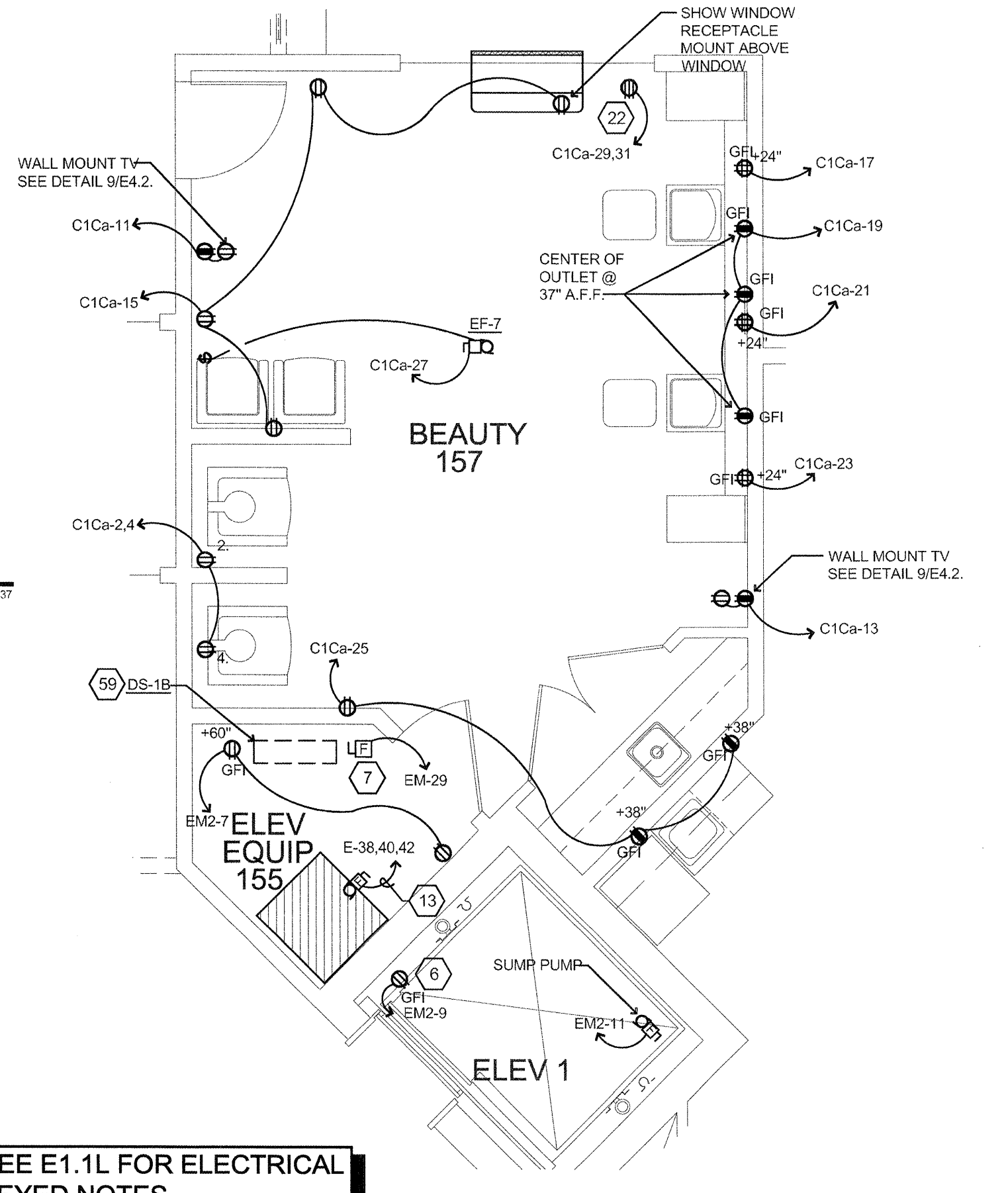
- REPLACE TYPE "Q2" FIXTURE WITH TYPE "CF1" CEILING FAN ON UPPER FLOOR VAULTED UNITS. SEE LIGHTING PLANS FOR LOCATION OF VAULTED UNITS. (SEE DETAIL 6.7/E5.1)
- PROVIDE JUNCTION BOX AT 48" A.F.F. FOR EMERGENCY PULL SWITCH AND (1) FPLR-SHEATHED 18-4 CABLE FROM BEDROOM SMOKE DETECTOR. RELAY TO J-BOX AT THIS LOCATION ONLY. ADDITIONAL LOCATIONS WILL BE SURFACE MOUNT.
- COORDINATE WITH MECHANICAL IF SUITE BATHROOM EXHAUST FAN WILL BE PROVIDED. IF NO FAN IS PROVIDED, ELIMINATE SWITCH AND ELECTRICAL CONNECTION TO FAN.



**TYPICAL B-UNIT (WITH CEILING VAULT)**

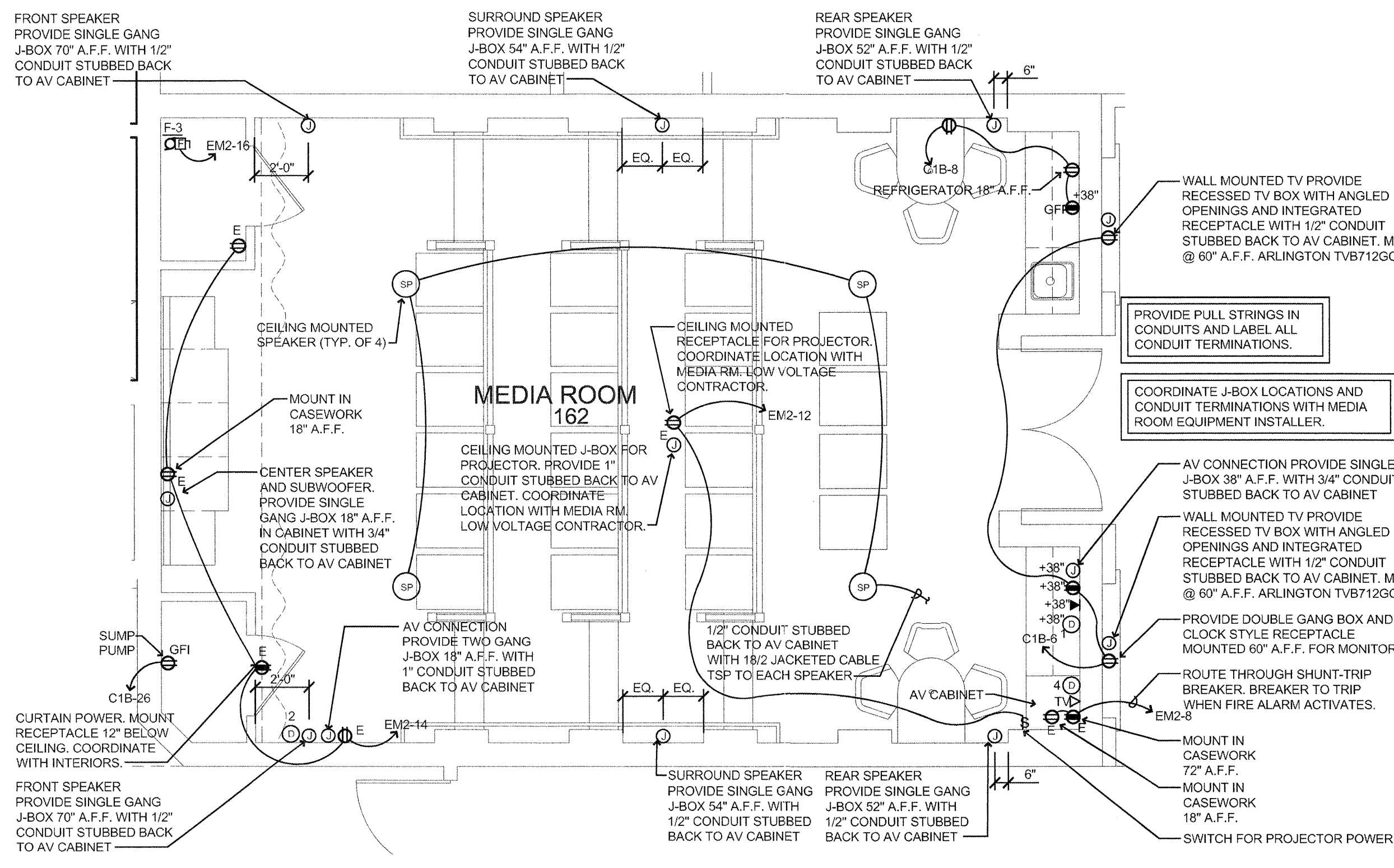
SCALE: 1/4" = 1'-0"

PROVIDE COMBINATION TYPE ARC-FAULT CIRCUIT INTERRUPTER FOR EACH CIRCUIT FEEDING THE MANAGER AND CO-MANAGER UNITS. WITH THE EXCEPTION OF THE LAUNDRY, BATHROOM AND KITCHEN CIRCUITS.



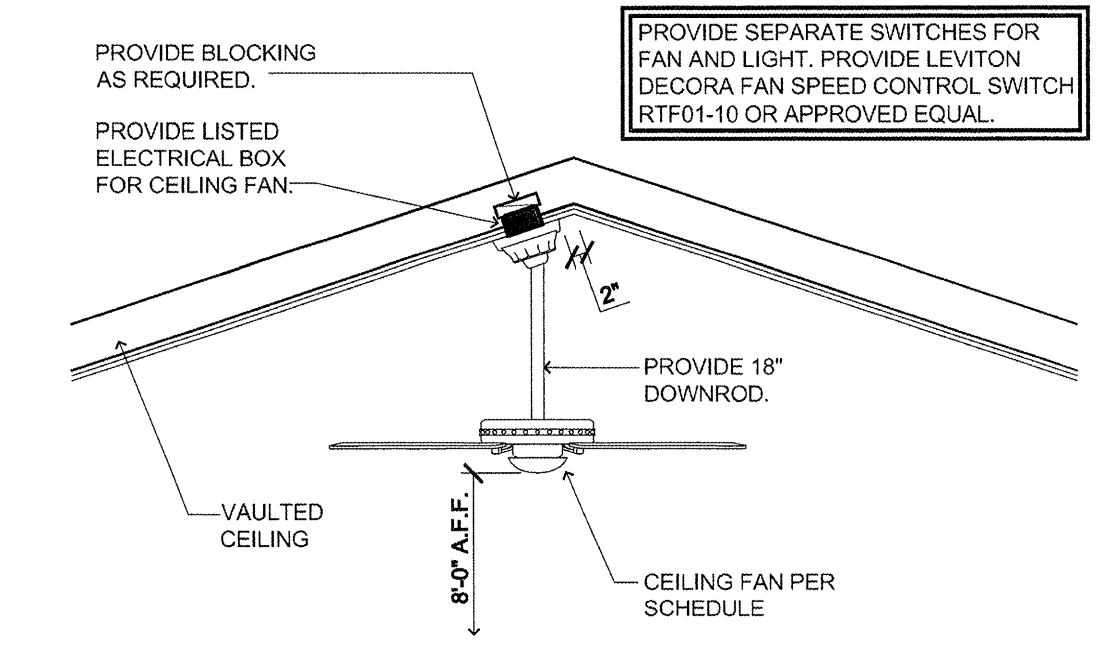
**ENLARGED BEAUTY/ELEVATOR POWER PLAN**

SCALE: 1/4" = 1'-0"



**ENLARGED THEATER POWER AND LOW VOLTAGE PLAN**

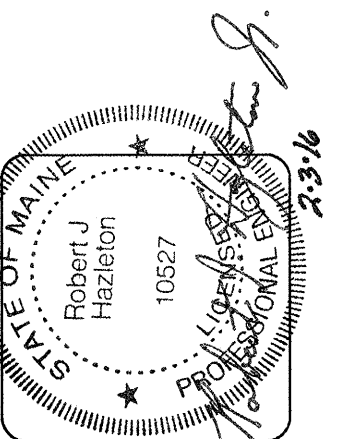
SCALE: 1/4" = 1'-0"



**CEILING FAN INSTALLATION SLOPED CEILINGS**

SCALE: 1/2" = 1'-0"

SEE E1.1L FOR ELECTRICAL KEYED NOTES.



**lenity architecture**  
3150 Lettie Court SE, Salem, Oregon 97301  
P 503.399.1090 F 503.999.0585 W lenityarchitecture.com

**COLSON AND COLSON**  
GENERAL CONTRACTOR, INC.  
2280 McGILCHRIST STREET SE, SUITE 200  
SALEM, OREGON, 97302  
PHONE (503) 566-7401

**PORTLAND RETIREMENT RESIDENCE**  
802 OCEAN AVE. PORTLAND, MAINE 04103

**ELECTRICAL SUITE PLANS**

DATE: 8/28/2015  
REVISED DATE: 9/22/2015  
SHEET: E5.1