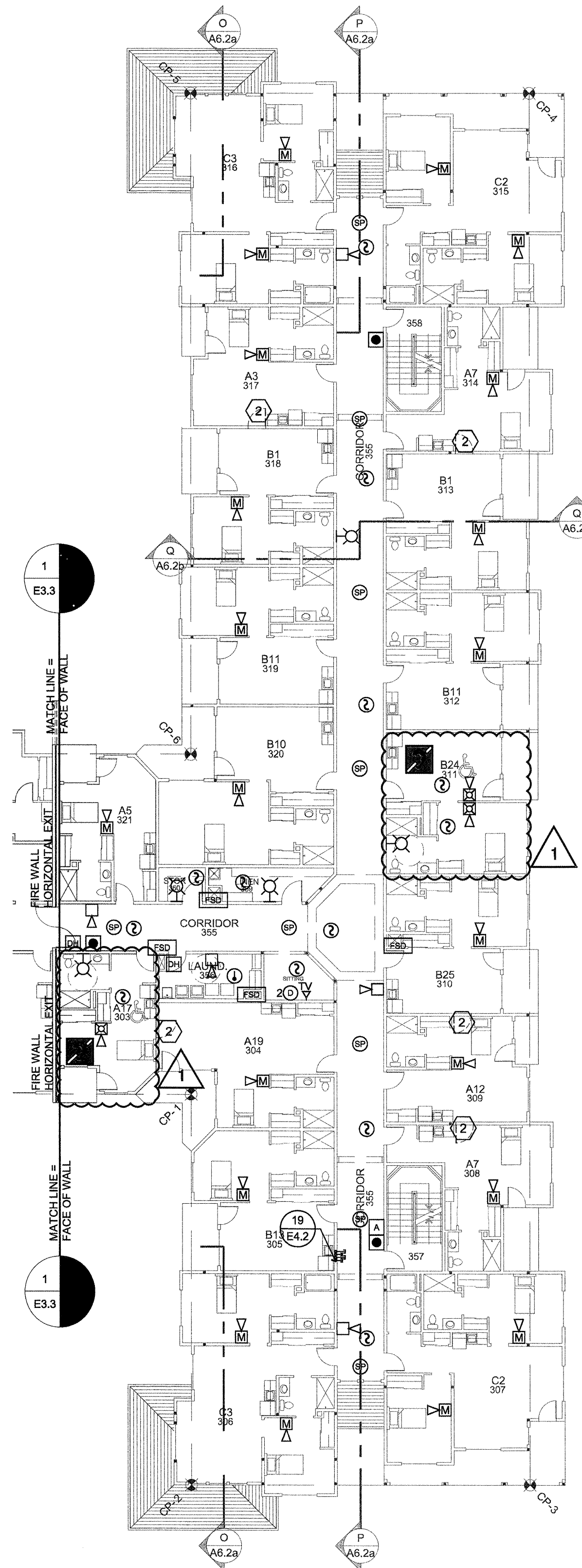


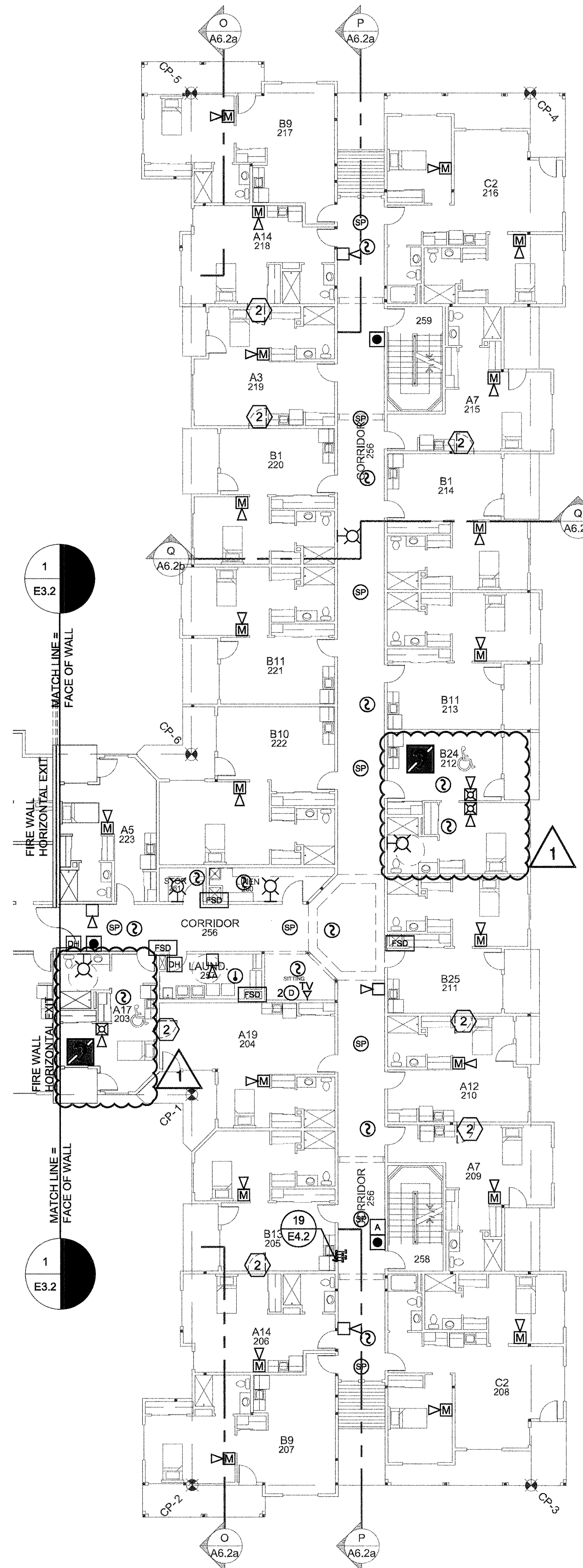
**FOURTH FLOOR**  
SCHEMATIC LOW VOLTAGE

4  
E3.5 SCALE: 1/16" = 1'-0"



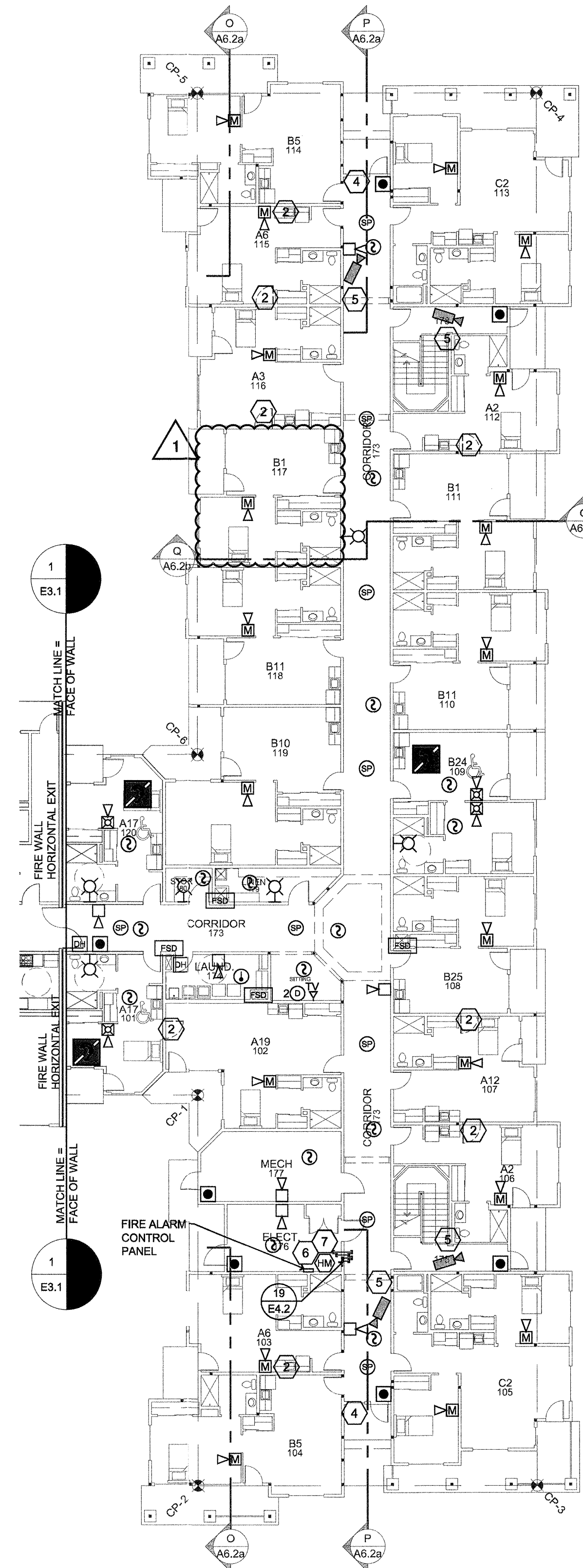
**THIRD FLOOR**  
SCHEMATIC LOW VOLTAGE

3  
E3.5 SCALE: 1/16" = 1'-0"



**SECOND FLOOR**  
SCHEMATIC LOW VOLTAGE

2  
E3.5 SCALE: 1/16" = 1'-0"



**FIRST FLOOR**  
SCHEMATIC LOW VOLTAGE

1  
E3.5 SCALE: 1/16" = 1'-0"

REQUIRED UNITS WITH VISIBLE ALARMS		
FLOOR	# OF I-1 UNITS	
1ST FLOOR (INCLUDING MANAGER AND CO-MANAGER)	40	
2ND FLOOR	44	
3RD FLOOR	48	
TOTAL	132	
NUMBER OF SLEEPING UNITS WITH VISIBLE ALARMS REQUIRED, PER IFC TABLE 907.6.2.3.3		
UNIT NUMBERS		
153 (MGR)	126 (C4)	411 (B24)
184 (CO-MGR)	203 (A17)	
101 (A17)	212 (B24)	
109 (B24)	303 (A17)	
120 (A17)	311 (B24)	
124 (A18)	403 (A17)	

- NOTE: SMOKE DAMPERS SHALL BE CLOSED BY ACTUATION OF A SMOKE DETECTOR INSTALLED IN ACCORDANCE WITH THE FIRE CODE AND ONE OF THE FOLLOWING APPLICABLE METHODS:
- WHERE A DAMPER IS INSTALLED WITHIN A DUCT, A SMOKE DETECTOR SHALL BE INSTALLED IN THE DUCT WITHIN 5 FEET OF THE DAMPER WITH NO AIR OUTLETS OR INLETS BETWEEN THE DETECTOR AND THE DAMPER. THE DETECTOR SHALL BE LISTED FOR THE AIR VELOCITY, TEMPERATURE AND HUMIDITY ANTICIPATED AT THE POINT WHERE IT IS INSTALLED.
  - WHERE A DAMPER IS INSTALLED WITHIN AN UNDUCTED OPENING IN A WALL, A SPOT-TYPE DETECTOR LISTED FOR RELEASING SERVICE SHALL BE INSTALLED WITHIN 5 FEET HORIZONTALLY OF THE DAMPER.
  - WHERE A DAMPER IS INSTALLED IN A CEILING, A SPOT-TYPE DETECTOR LISTED FOR RELEASING SERVICE SHALL BE INSTALLED ON THE CEILING WITHIN 5 FEET OF THE DAMPER.
  - WHERE A DAMPER IS INSTALLED IN A CORRIDOR WALL OR CEILING, THE DAMPER MAY BE CONTROLLED BY A SMOKE-DETECTION SYSTEM INSTALLED IN THE CORRIDOR.
  - WHEN A TOTAL-COVERAGE SMOKE-DETECTION SYSTEM IS PROVIDED WITHIN ALL AREAS SERVED BY AN HVAC SYSTEM, DAMPERS MAY BE CONTROLLED BY THE SMOKE-DETECTION SYSTEM.
  - VERIFY LOCATIONS OF FSD WITH MECHANICAL DRAWINGS.

**LEGEND**

- DOOR HOLDERS
- DATA PORT (X = QUANTITY OF OUTLETS)
- COMMON AREA TELEPHONE LOCATIONS
- COMMON AREA CATV LOCATIONS
- CEILING MOUNTED SPEAKER
- SPEAKER VOLUME CONTROL
- HUB MAX
- FIRE SMOKE DAMPERS - SEE MECHANICAL
- AREA OF RESCUE REMOTE CALL STATION
- MASTER AREA OF RESCUE CALL STATION PANEL - RESCUE STAFF INTERFACE
- EMERGENCY PULL SWITCH
- P.O.E. NETWORK CAMERA

**FIRE ALARM LEGEND**

- FIRE ALARM CONTROL PANEL
- REMOTE ANNUNCIATOR
- ADDRESSABLE RELAY MODULE
- ADDRESSABLE MANUAL PULL STATION
- ADDRESSABLE PHOTOELECTRIC SMOKE DETECTOR
- ADDRESSABLE COMBINATION PHOTOELECTRIC SMOKE AND CARBON MONOXIDE DETECTOR
- WALL-MOUNT CARBON MONOXIDE DETECTOR WITH ALARM AND RELAY TO ACTIVATE SUPERVISORY SINGLE TO FIRE ALARM. PROVIDE ILL LISTED 12VDC POWER SUPPLY. MACURCO CARBON MONOXIDE DETECTOR CM-S1, OR APPROVED.
- CARBON MONOXIDE DUCT DETECTOR WITH RELAY TO SHUT-DOWN EQUIPMENT, AND ACTIVATE A SUPERVISORY FIRE ALARM SIGNAL. MOUNT IN HVAC SUPPLY DUCT. SEE FIRE ALARM DRAWINGS.
- ADDRESSABLE HEAT DETECTOR
- DUCT TYPE SMOKE DETECTOR IN HVAC RETURN DUCT
- MAGNETIC DOOR HOLDER
- TAMPER SWITCH (PIV, BUTTERFLY, OR OS&Y)
- WATERFLOW SWITCH
- LOW AIR PRESSURE SWITCH
- WATERFLOW PRESSURE SWITCH
- KITCHEN HOOD SUPPRESSION SYSTEM
- FIRE SMOKE DAMPER
- HORN/STROBE VARIABLE CANDELA WHITE WALL MOUNT
- STROBE VARIABLE CANDELA WHITE WALL MOUNT
- MINI HORN WHITE WALL MOUNT
- ADA HORN/STROBE HI-INTENSITY
- CHIME/STROBE VARIABLE CANDELA WHITE WALL MOUNT

**KEY NOTES:**

- ELECTRONIC STRIKE POWERED BY TRANSFORMER (VAC), CONNECTED TO RELAY W/ 24 VDC TO FIRE ALARM DOOR MAGNET CIRCUIT BY ELECTRICAL.
- LOCATION OF FUTURE DOOR (DO NOT WIRE IN THIS LOCATION).
- PROVIDE WIRE TO THESE DOORS FOR DOOR MONITORING DEVICE. HOME RUN BACK TO OFFICE W/ 20'-0" PIG TAIL ABOVE T-BAR CLG.
- PROXI CARD READER LOCATION. PROVIDE STRIKE ON DOOR.
- CAMERA LOCATION. PROVIDE DATA OUTLET, WITH CAT 6 CABLE BACK TO DATA CABINET. VERIFY LOCATION AND MOUNTING HEIGHT WITH OWNERS REPRESENTATIVE.
- TERMINATION POINT OF VIDEO CABLES W/ 10'-0" PIG TAIL ABOVE T-BAR CEILING.
- TERMINAL POINT FOR DATA DROPS.
- PROVIDE CAT5E CABLE FROM OFFICE TO SECOND FLOOR CLOSET FOR TEL-TRON EQUIPMENT. TERMINATE PER TIA/EIA-568-B CONFIGURATION AT SINGLE OUTLET USING RED RJ-45 CONNECTOR AND LABEL FACEPLATE "TEL-TRON ONLY".
- EVENT DISPLAY MONITOR. PROVIDE (2) CAT6 CABLES TO DATA CABINET AND (1) RGE CABLE BACK TO CATV BOARD. PROVIDE RECESSED STEEL TV BOX. ARLINGTON TV88307, OR APPROVED.
- DOORBELL TO BE TIED TO CO-MANAGER AND MANAGER'S PHONE LINES THROUGH PHONE SYSTEM IN ELECTRICAL ROOM.
- SMOKE DETECTOR TO ANNUNCIATE FACP ALARM, AND ACTIVATE ATRIUM SMOKE CONTROL SYSTEM.

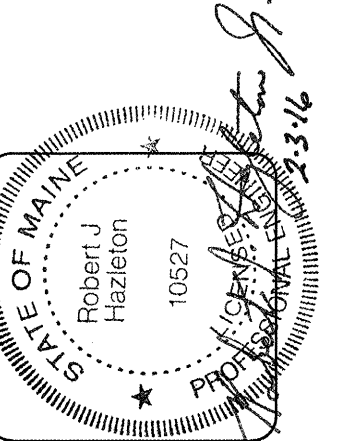
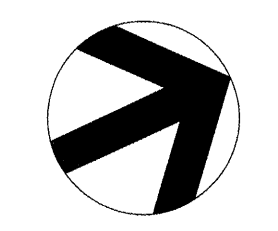
**NOTES:**

LOW VOLTAGE CONTRACTOR TO NOTIFY CONTRACTOR IF ANY DOOR WHICH HAS REQUIRED DOOR MAGNET WILL NOT CLOSE FLUSH TO WALL. SEE DRAWING E4.2 FOR WIRING DETAILS.

SEE DETAIL 11/E2.2b AND 14/E2.2b FOR ALLOWABLE BORING/NOTCHING OF MEMBERS.

SHOWN ONLY AS SCHEMATIC.

**ELECTRICIAN SHALL OBTAIN ALL REQUIRED PERMITS PRIOR TO INSTALLATION**



**lenity architecture**  
3150 Vette Court SE, Salem, Oregon 97301  
P: 503.599.1590 F: 503.599.0585

**COLSON AND COLSON**  
GENERAL CONTRACTOR, INC.  
2280 MCGILCHRIST STREET SE, SUITE 200  
SALEM, OREGON, 97302  
PHONE (503) 586-7401

**PORTLAND**  
RETIREMENT RESIDENCE  
802 OCEAN AVE., PORTLAND, MAINE 04103

**WING 'B'**  
SCHEMATIC  
LOW VOLTAGE

DATE: 8/28/2015

REVISED DATE: 9/22/2015

SHEET E3.5