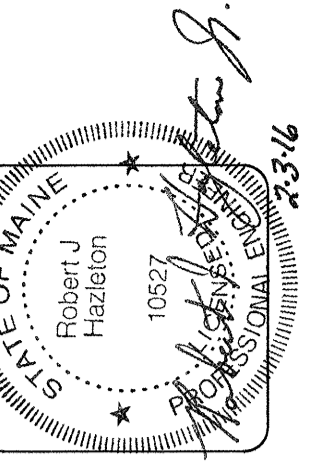


**ELECTRICAL KEY NOTES:**

- 1 ELECTRICAL MAIN DISTRIBUTION PANEL LOCATED IN ELECTRICAL ROOM. SEE ONE-LINE 1/E2.2a.
- 2 EMERGENCY STANDBY ENGINE GENERATOR. SEE SPECIFICATIONS ON SHEET E2.1, AND ONE-LINE DIAGRAM 1/E2.2a.
- 3 TELEPHONE TERMINAL BOARD LOCATED IN MECHANICAL ROOM.
- 4 TELEVISION TERMINAL BOARD LOCATED IN MECHANICAL ROOM.
- 5 CONNECT VIA LIGHTING CONTROLLER. SEE DETAIL 3/E2.2b.
- 6 COORDINATE WITH STRUCTURAL FOR ROUTING OF RACEWAY WHEN ROUTED UNDER BUILDING.
- 7 SEE ONE-LINE DIAGRAM 1/E2.2a FOR WIRE AND CONDUIT SIZE.
- 8 PAD MOUNTED UTILITY TRANSFORMER, 120/208 VOLT, 3 PHASE. COORDINATE WITH UTILITY FOR LOCATION AND SIZE.
- 9 PROVIDE A MINIMUM OF (2) 4" SCHEDULE 40 PVC CONDUIT WITH PULL STRING FROM TELEPHONE TERMINAL BOARD TO TELEPHONE COMPANY SERVICE POINT. COORDINATE EXACT ROUTING, CONDUIT SIZE AND QUANTITY, AND TERMINATION POINT WITH TELEPHONE SERVICE PROVIDER. PROVIDE A MINIMUM OF (2) 4" SCHEDULE 40 PVC CONDUIT WITH PULL STRING FROM TELEVISION TERMINAL BOARD TO TELEVISION COMPANY SERVICE POINT. COORDINATE EXACT ROUTING, CONDUIT SIZE AND QUANTITY, AND TERMINATION POINT WITH TELEVISION SERVICE PROVIDER.
- 10 UNDERGROUND PRIMARY SERVICE. COORDINATE SERVICE AND PAY ALL CHARGES AS REQUIRED BY SERVING UTILITY. PROVIDE CONDUIT AND RACEWAY FROM TRANSFORMER TO UTILITY SERVICE VAULT AS REQUIRED BY SERVICE UTILITY. INSTALL RACEWAY A MINIMUM OF 36" BELOW GRADE. COORDINATE EXACT ROUTING, CONDUIT SIZE AND QUANTITY, INSTALLATION REQUIREMENTS, AND TERMINATION POINT WITH UTILITY.

**ELECTRICAL GENERAL NOTES:**

1. OUTSIDE THE BUILDING AND BELOW GRADE, WIRING MAY BE IN SCHEDULE-40 PVC CONDUIT WITH GROUNDING CONDUCTOR IF ACCEPTABLE BY LOCAL CODES. NOT LESS THAN 3/4" CONDUIT.
2. INSTALL EXTERIOR CIRCUITS UNDERGROUND. DIRECT BURIED BRANCH CIRCUIT WIRING OUTSIDE THE BUILDING AND BELOW GRADE MY BE IN TYPE UF MOISTURE RESISTANT CABLE, NOT LESS THAN 10AWG CONDUCTORS OR AS NOTED. COMPLY WITH ELECTRICAL CODE AS REQUIRED AND NOTED ON COVER.

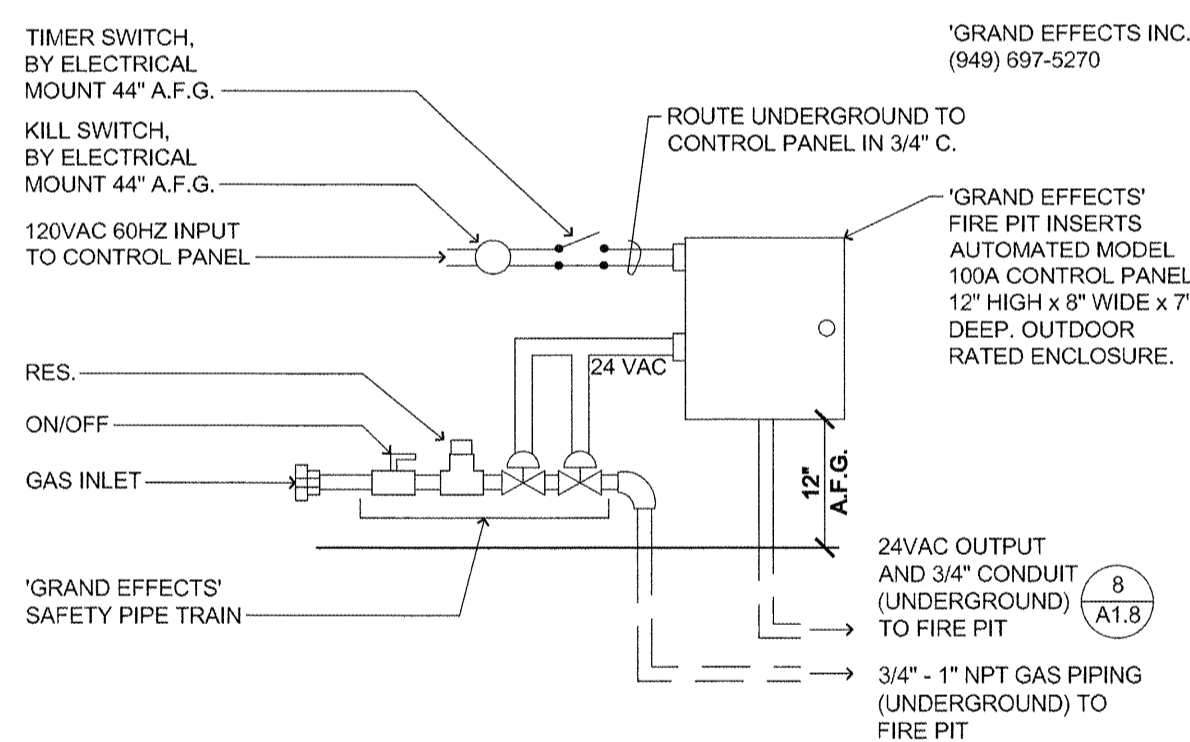


**lenity**  
architecture  
3150 Lettie Court SE, Salem, Oregon 97301  
P 503.399.1090 F 503.399.0585 w lenityarchitecture.com

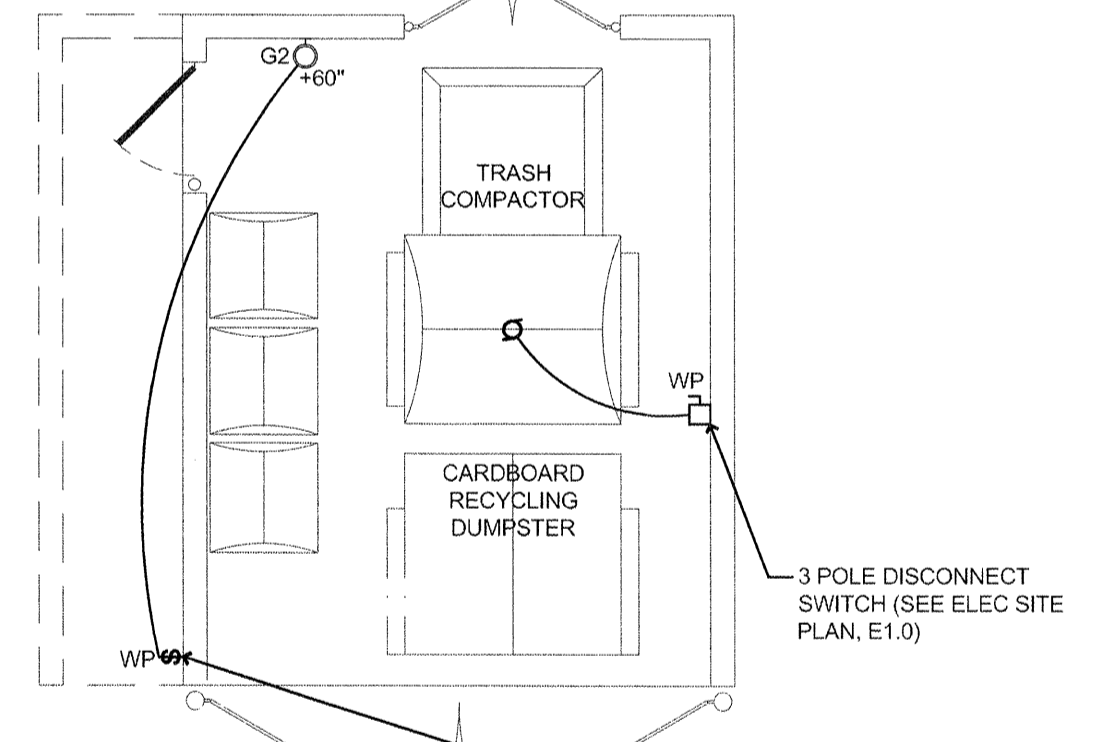
**COLSON AND COLSON**  
GENERAL CONTRACTOR, INC.  
2280 McGLCHRIST STREET SE, SUITE 200  
SALEM, OREGON, 97302  
PHONE (503) 586-7401

**PORTLAND**  
RETIREMENT RESIDENCE  
802 OCEAN AVE., PORTLAND, MAINE 04103

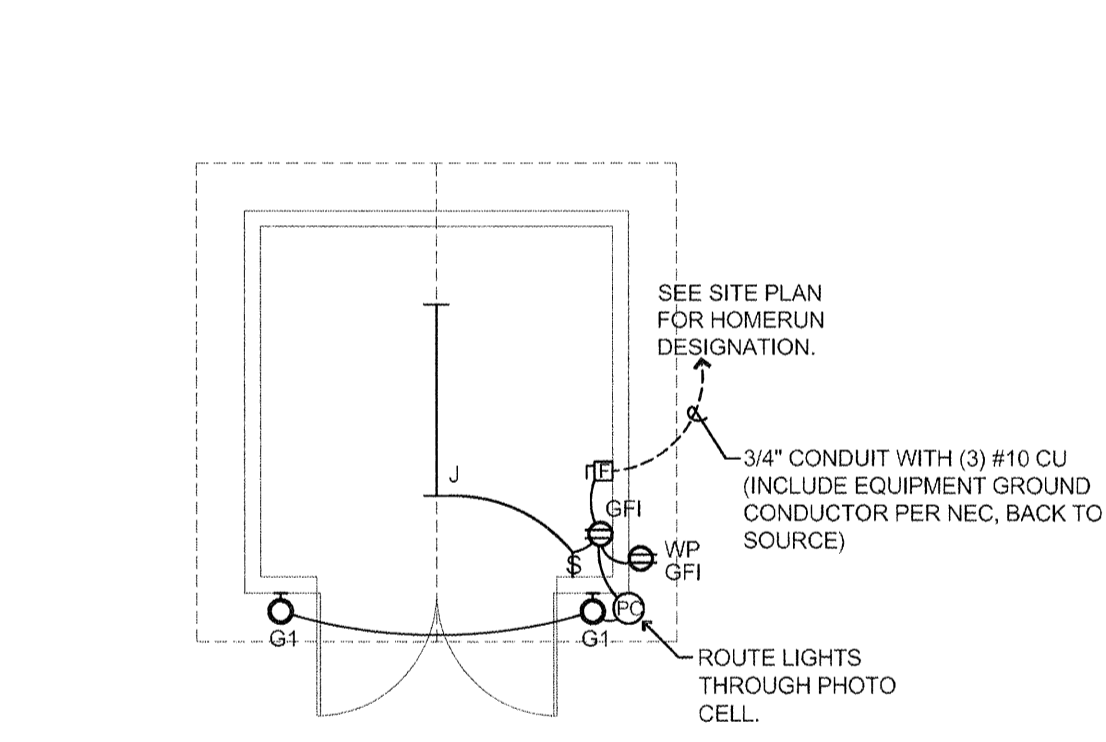
**ELECTRICAL**  
OUTBUILDING  
DETAILS



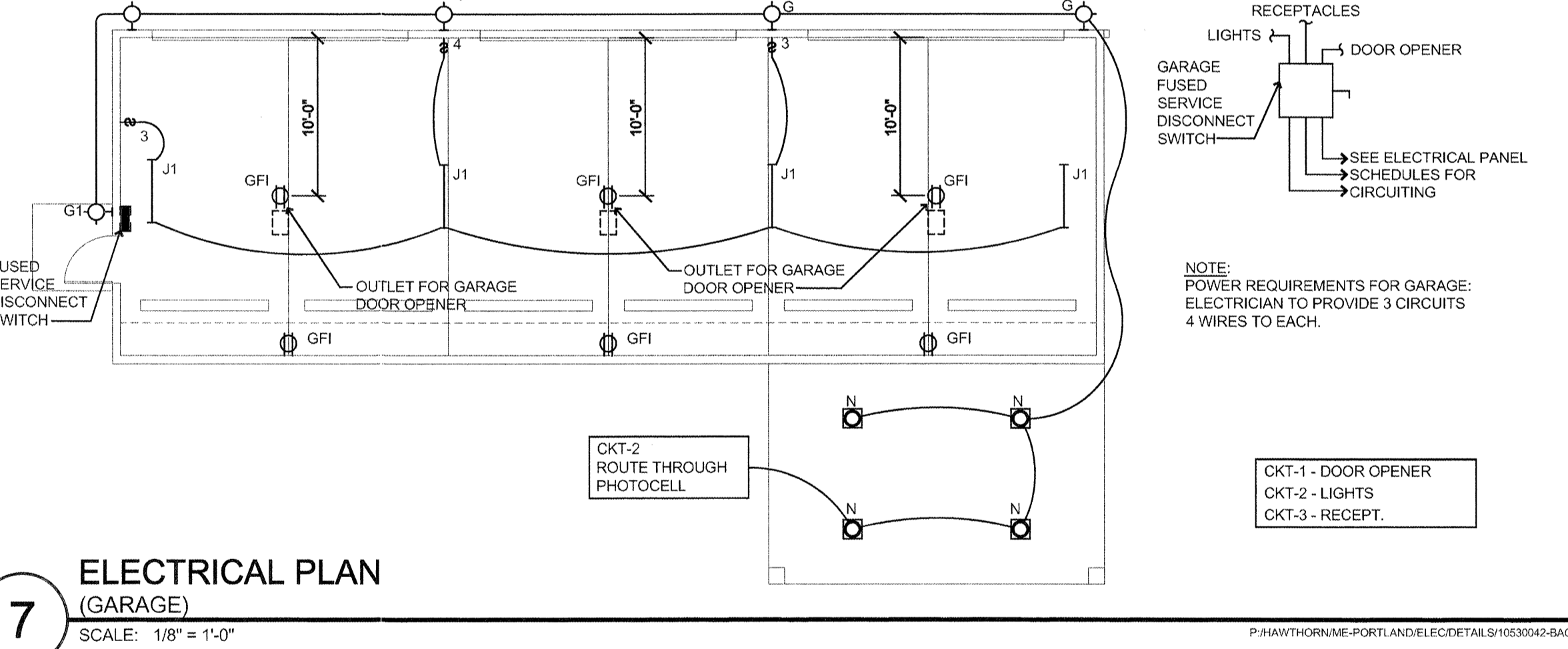
**6 FIRE PIT CONTROL BOX**  
SCALE: 1" = 1'-0"



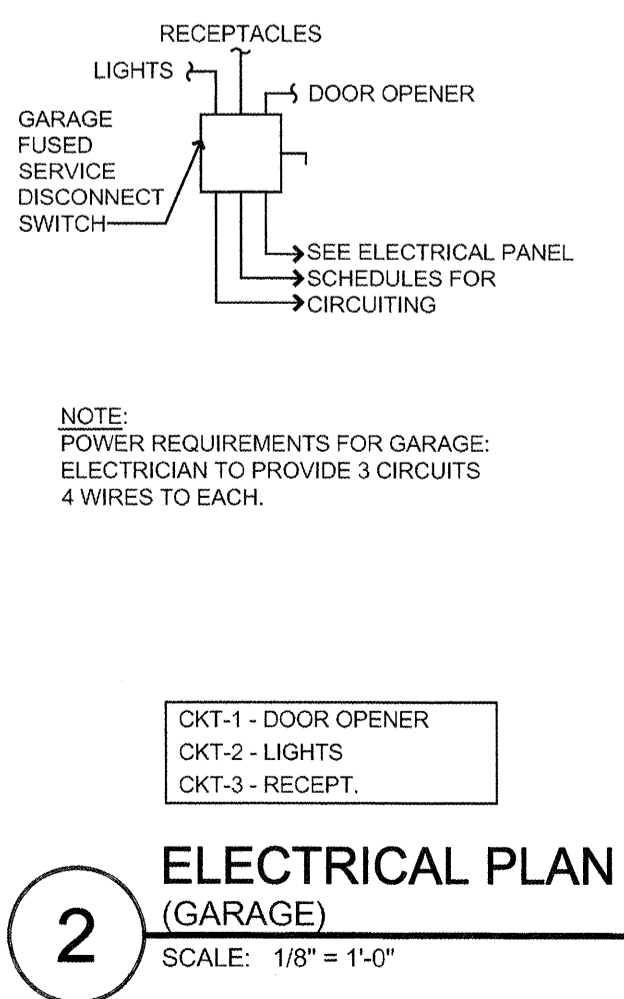
**4 ENCLOSURE (TRASH & RECYCLING)**  
SCALE: 3/16" = 1'-0"



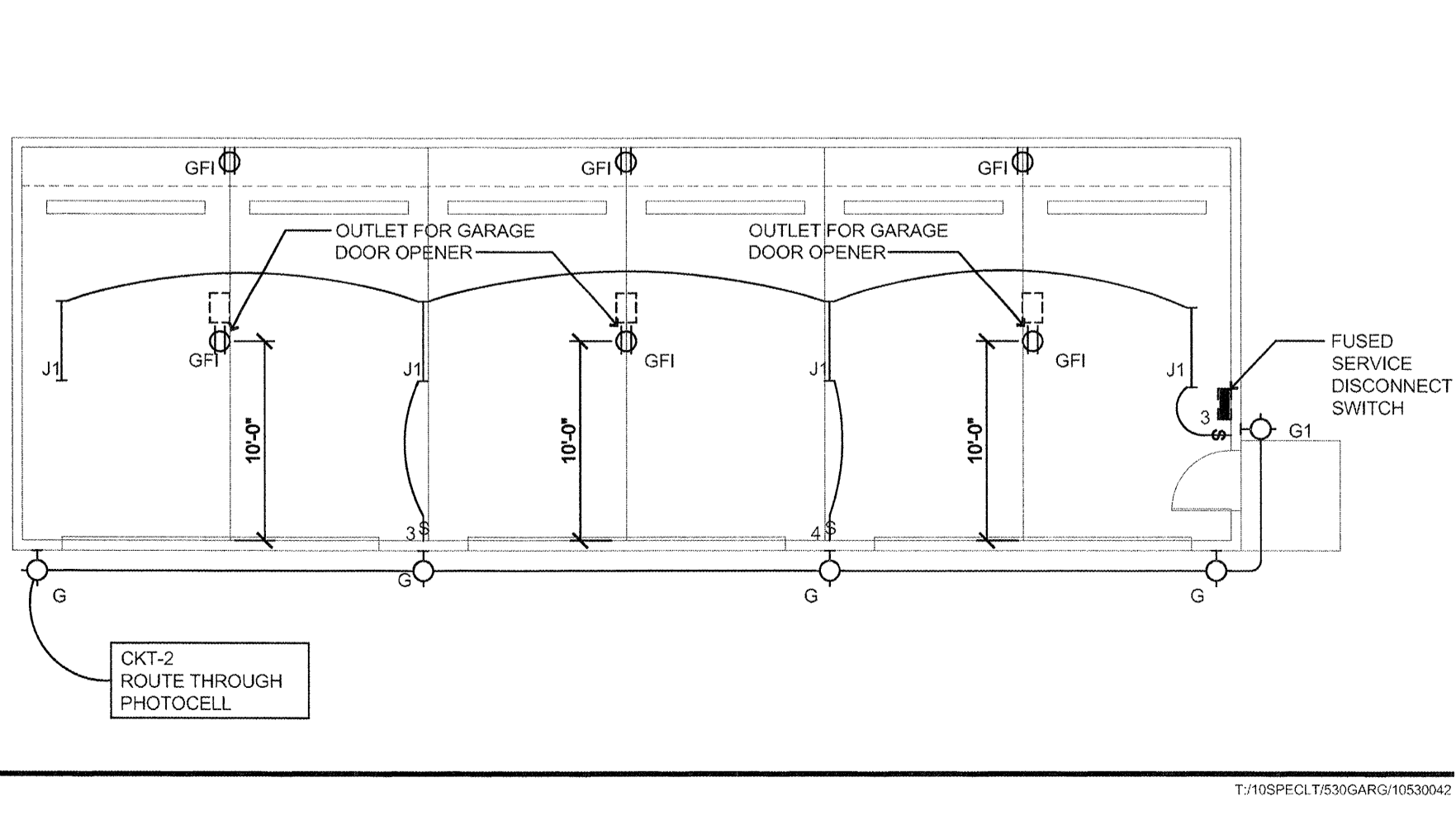
**3 TOOL SHED (ELECTRICAL PLAN)**  
SCALE: 1/4" = 1'-0"



**7 ELECTRICAL PLAN (GARAGE)**  
SCALE: 1/8" = 1'-0"



**2 ELECTRICAL PLAN (GARAGE)**  
SCALE: 1/8" = 1'-0"



**1 ELECTRICAL PLAN (GARAGE W/ REAR PUSH-OUT VAN ALLOWANCE)**  
SCALE: 1/8" = 1'-0"

DATE: 8/28/2015  
REVISED DATE: 9/22/2015  
SHEET: E2.4

S:\113\113-19\113-19-001\113-19-001-001.dwg 8/28/2015 10:58:42 AM