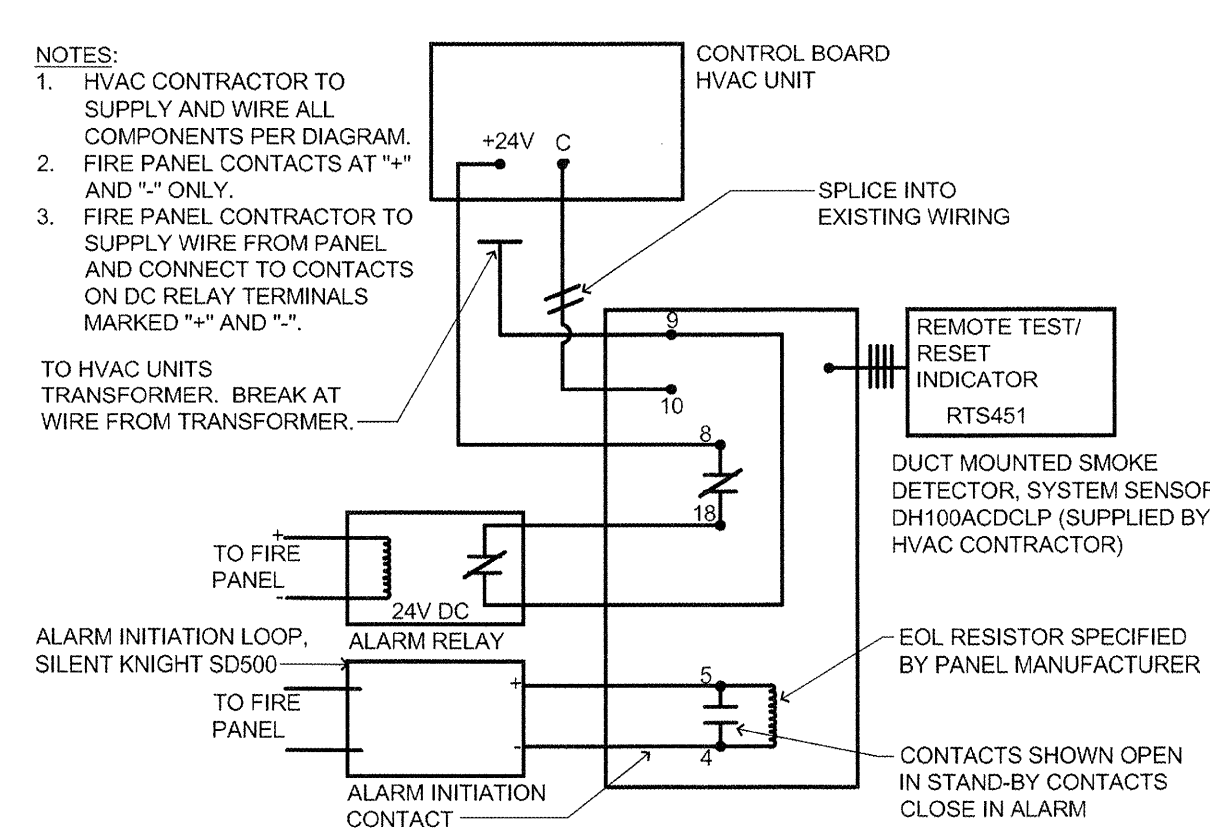
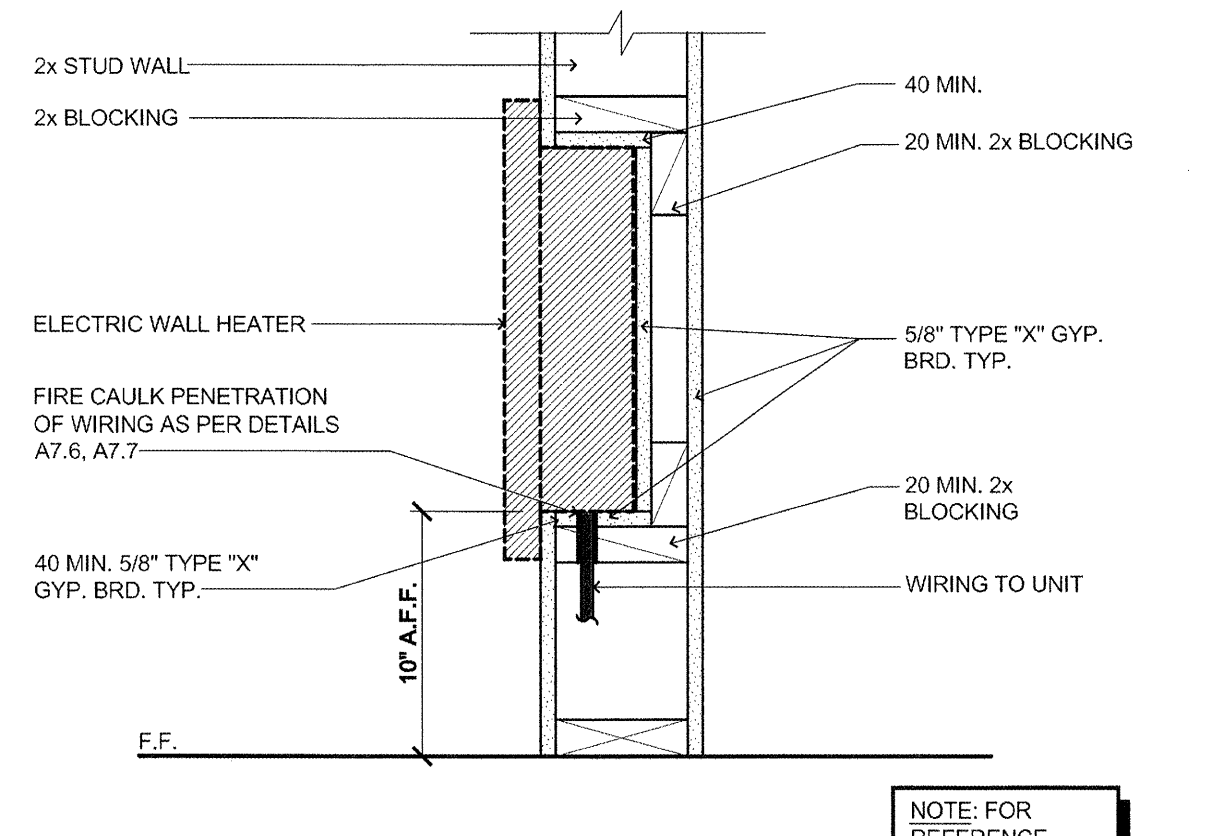


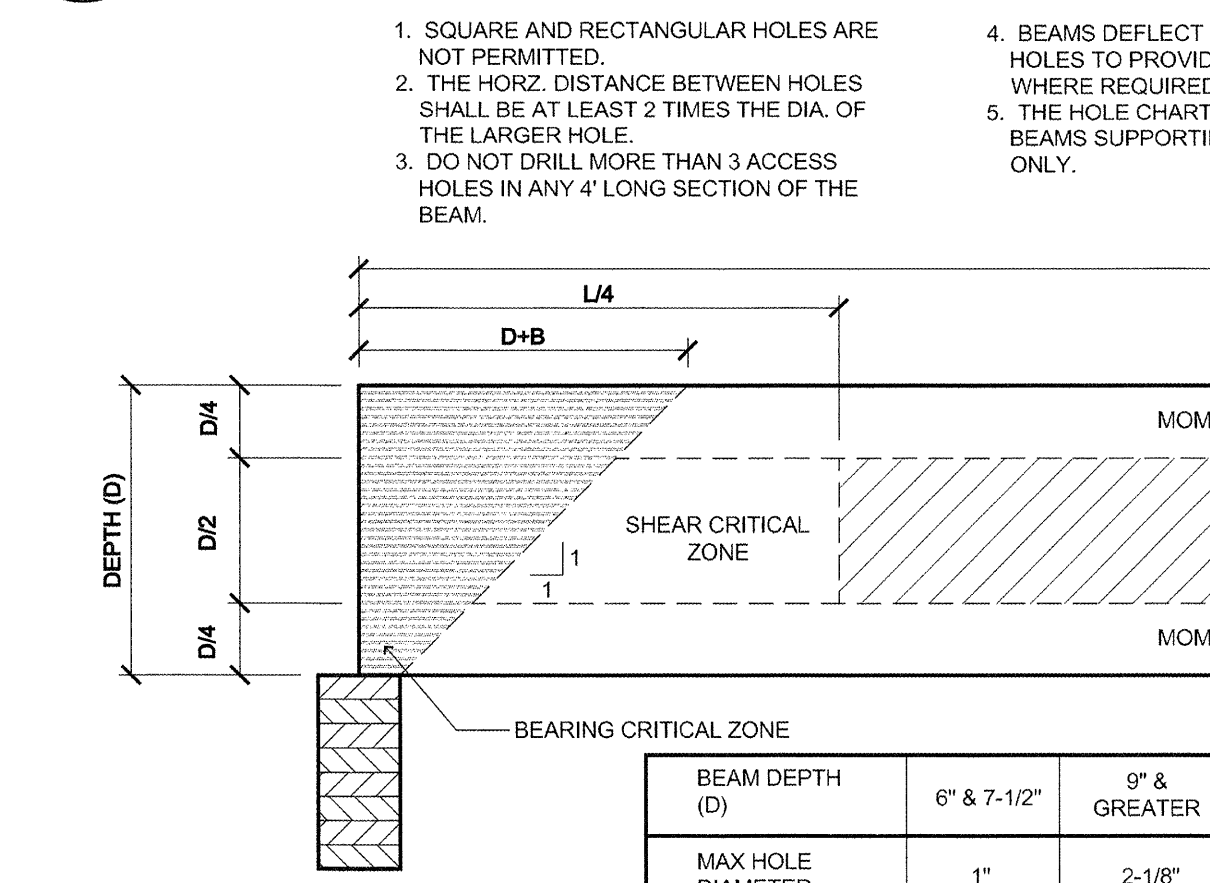
18 **FIXTURE PROTECTION**
 (HEAT LAMP, LIGHT FIXTURE/ SPEAKER)
 SCALE: N.T.S.
 T:\16ELECT\7650BASIC\16950115



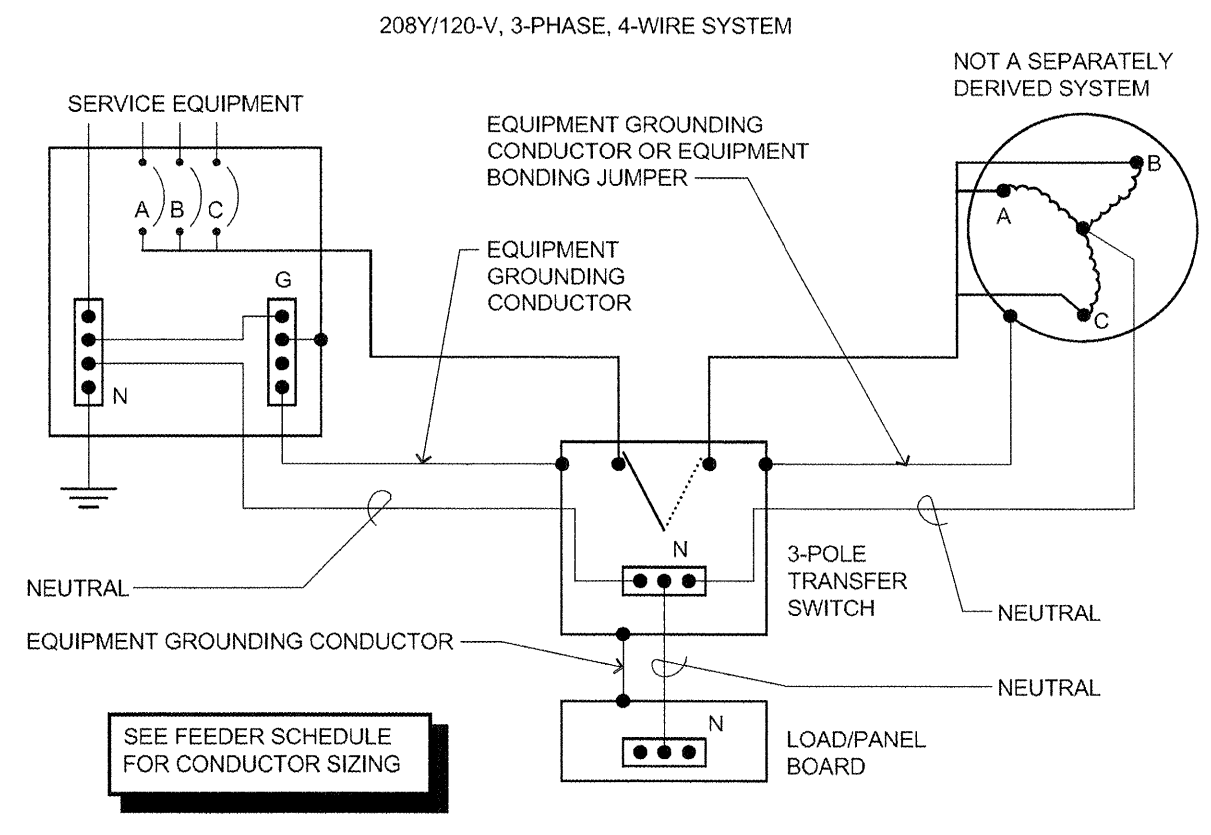
17 **FIRE ALARM/AC UNIT SHUTDOWN**
 SCALE: N.T.S.
 T:\16ELECT\7700COMM\16700126



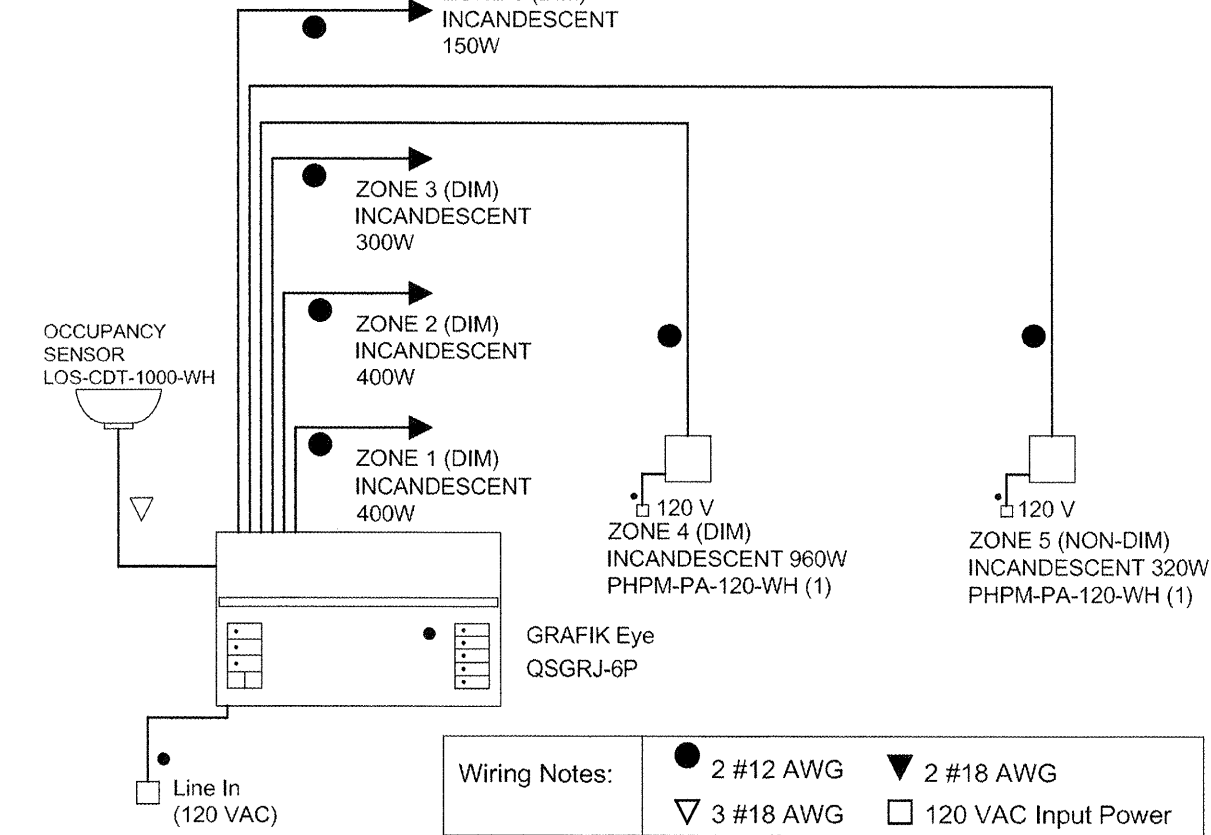
16 **ELECTRIC WALL HEATER**
 (RATED WALL INSTALLATION DETAIL)
 SCALE: 1 1/2" = 1'-0"
 T:\09FINISH\050VPEB\092002



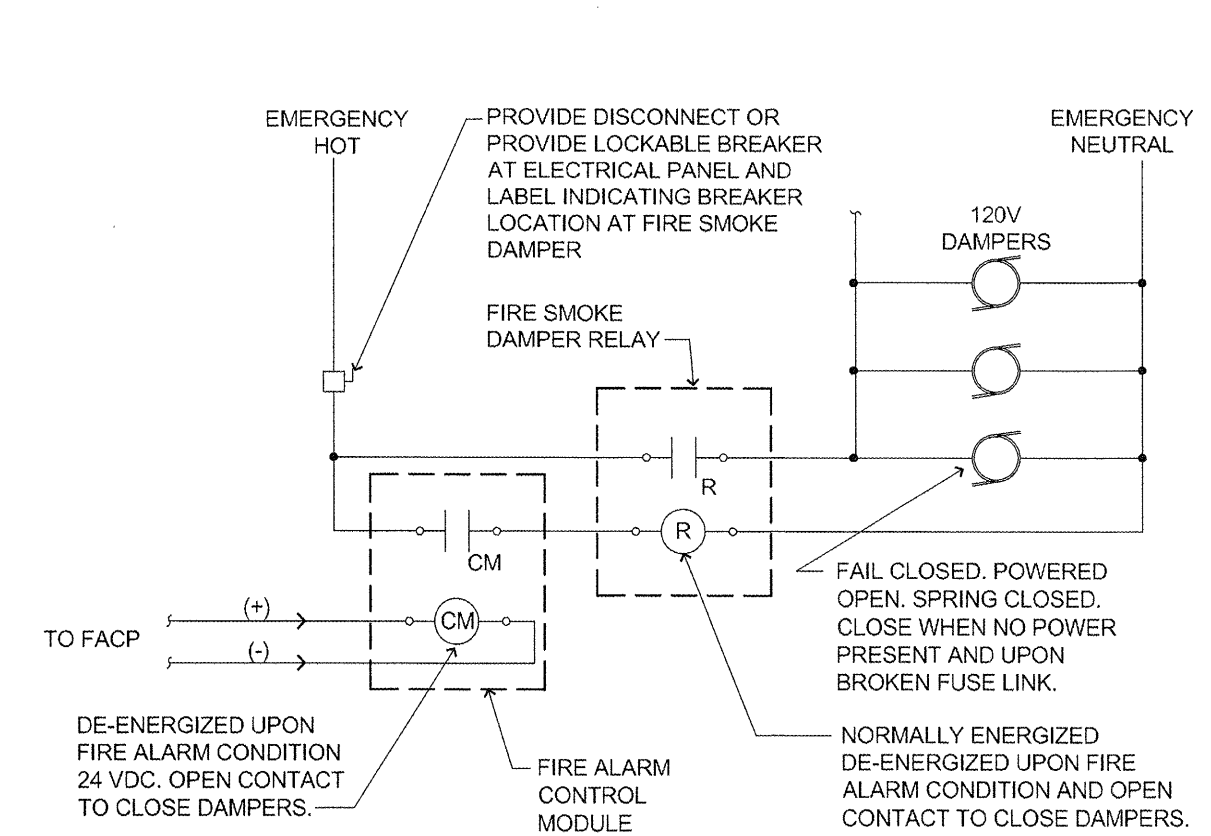
14 **GLU-LAM BEAM**
 (NOTCHES AND HOLES)
 SCALE: 1" = 1'-0"
 T:\15MECH\0504VAC\15500102



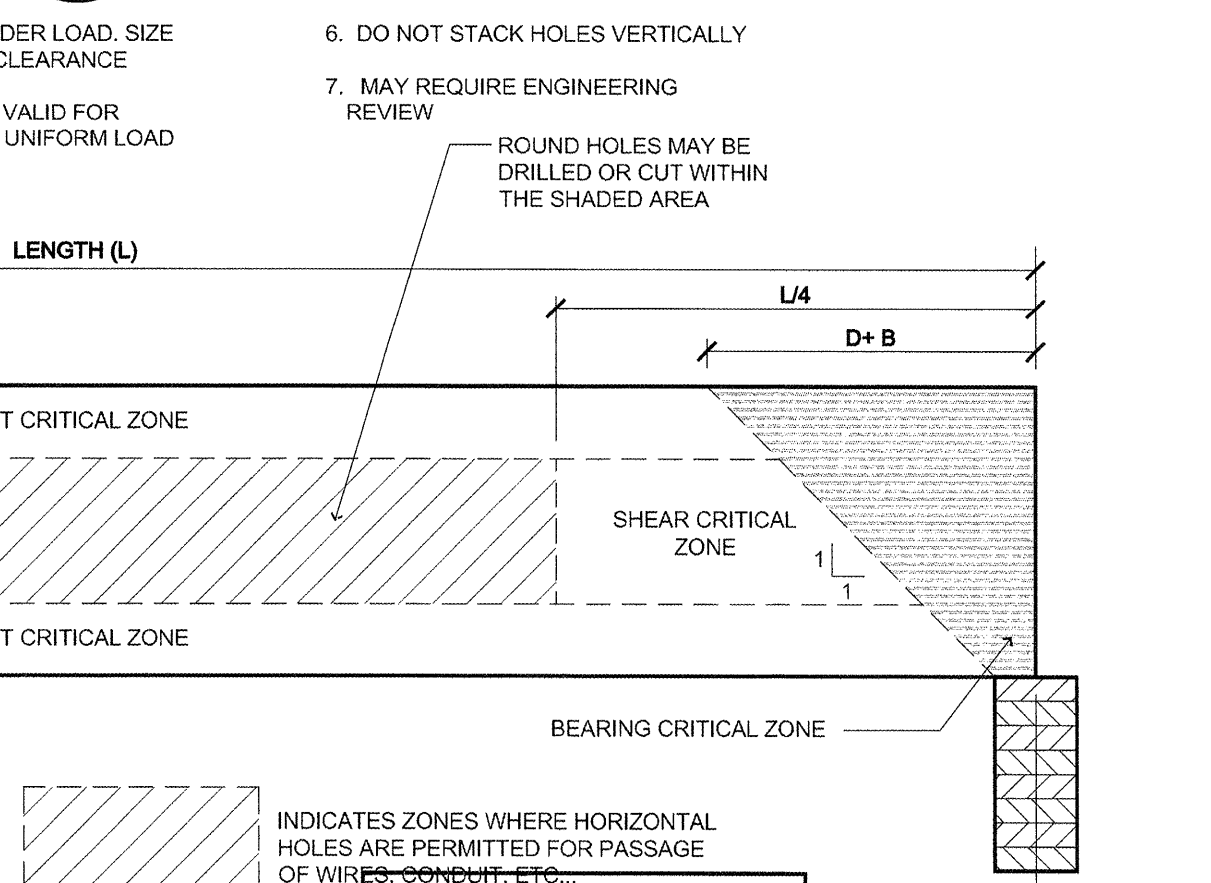
15 **GENERATOR GROUNDING**
 (NON-SEPARATELY DERIVED SYSTEM (NEC 250.20 (D))
 SCALE: N.T.S.
 T:\16ELECT\9000CTRL\16900008



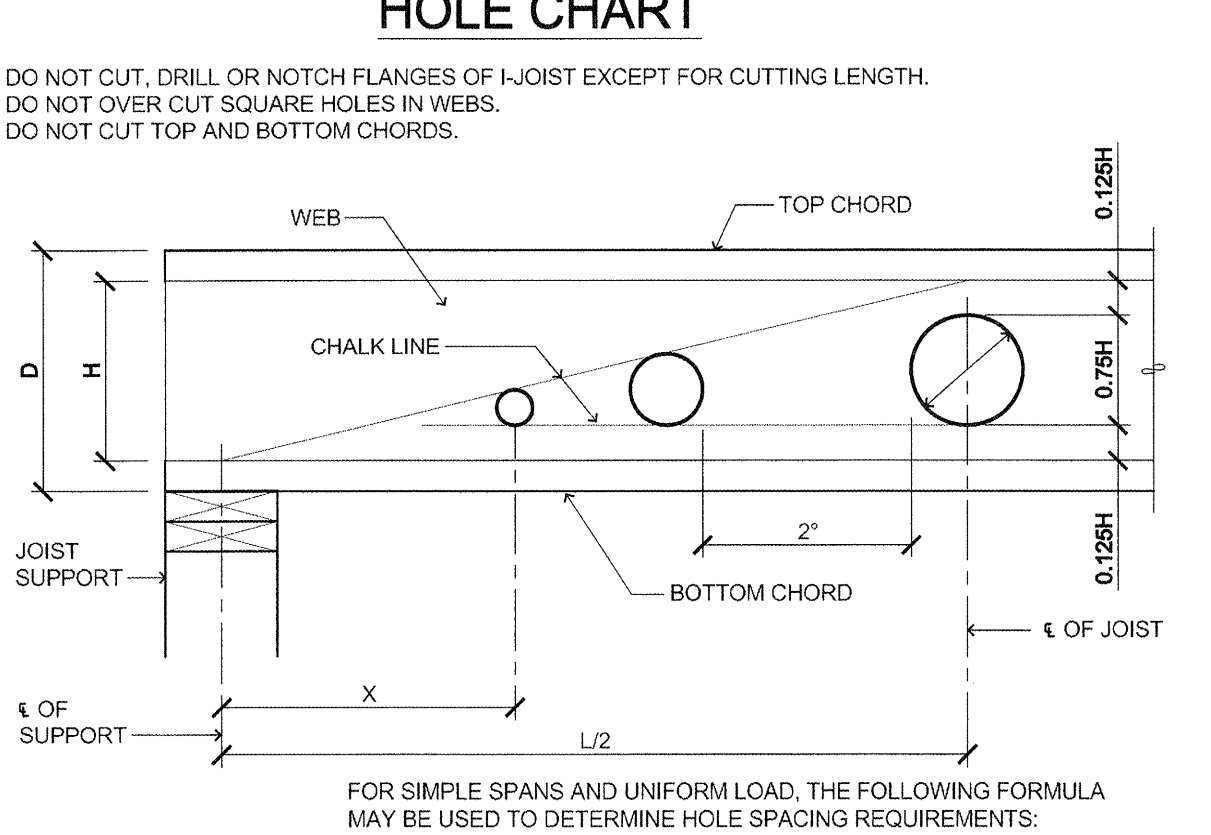
13 **THEATER LIGHTING CONTROLLER**
 SCALE: N.T.S.
 T:\16ELECT\9000CTRL\16900006



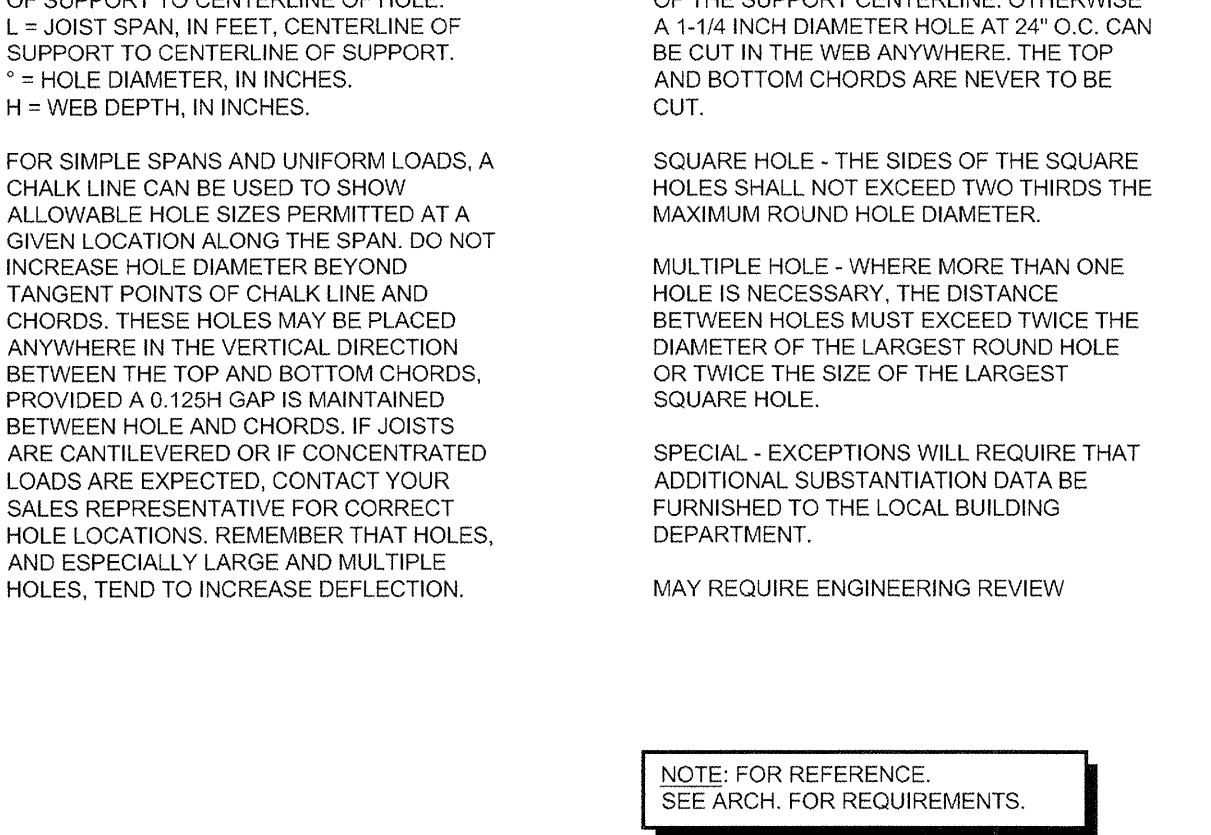
12 **FIRE/SMOKE DAMPER CONTROL**
 SCALE: N.T.S.
 T:\16ELECT\7000COMM\16700125



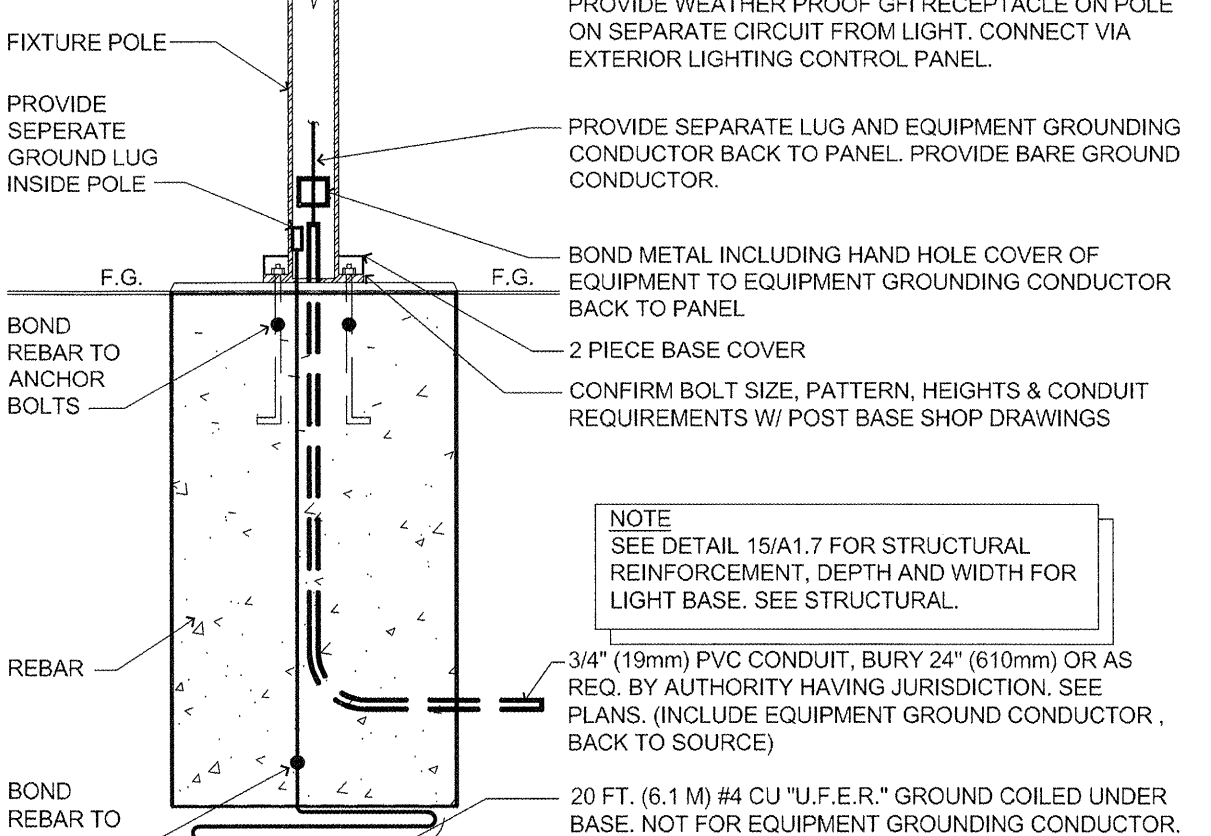
10 **PARKING LOT LIGHT BASE**
 SCALE: 3/4" = 1'-0"
 T:\02SITE\16\850VOLT\02850007



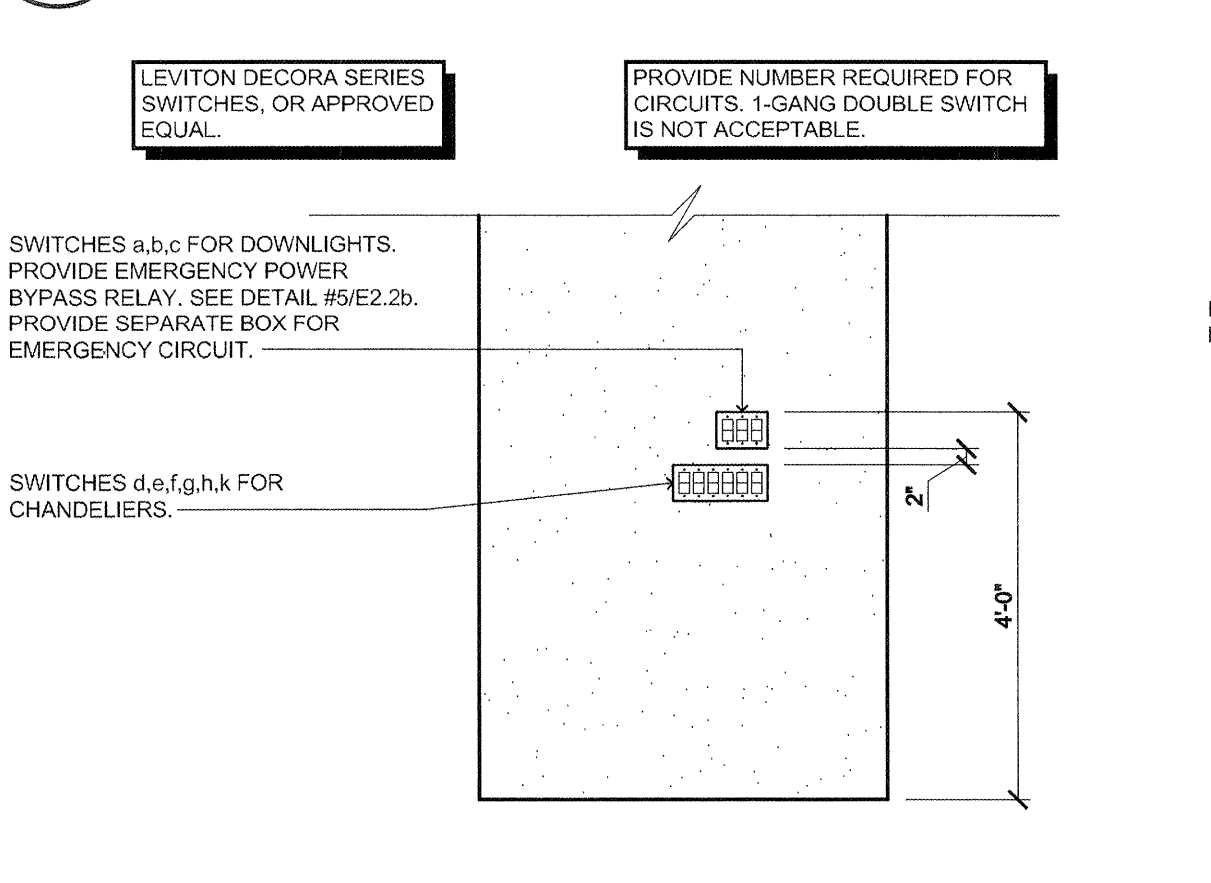
9 **PARTIAL ELEVATION**
 (DINING ROOM)
 SCALE: 1/2" = 1'-0"
 T:\16ELECT\510NLT\16100117



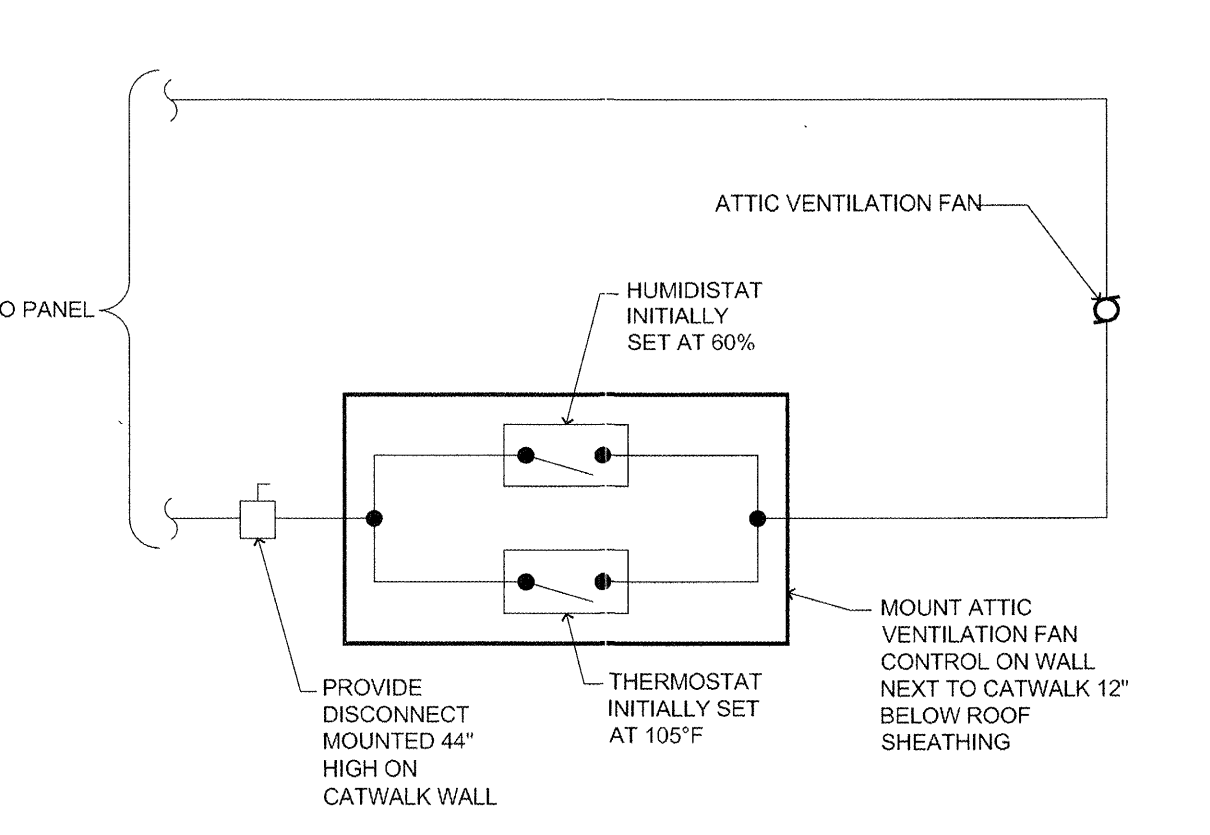
8 **TYPICAL ATTIC FAN CONTROL**
 SCALE: NOT TO SCALE
 T:\16ELECT\9000CTRL\16900003



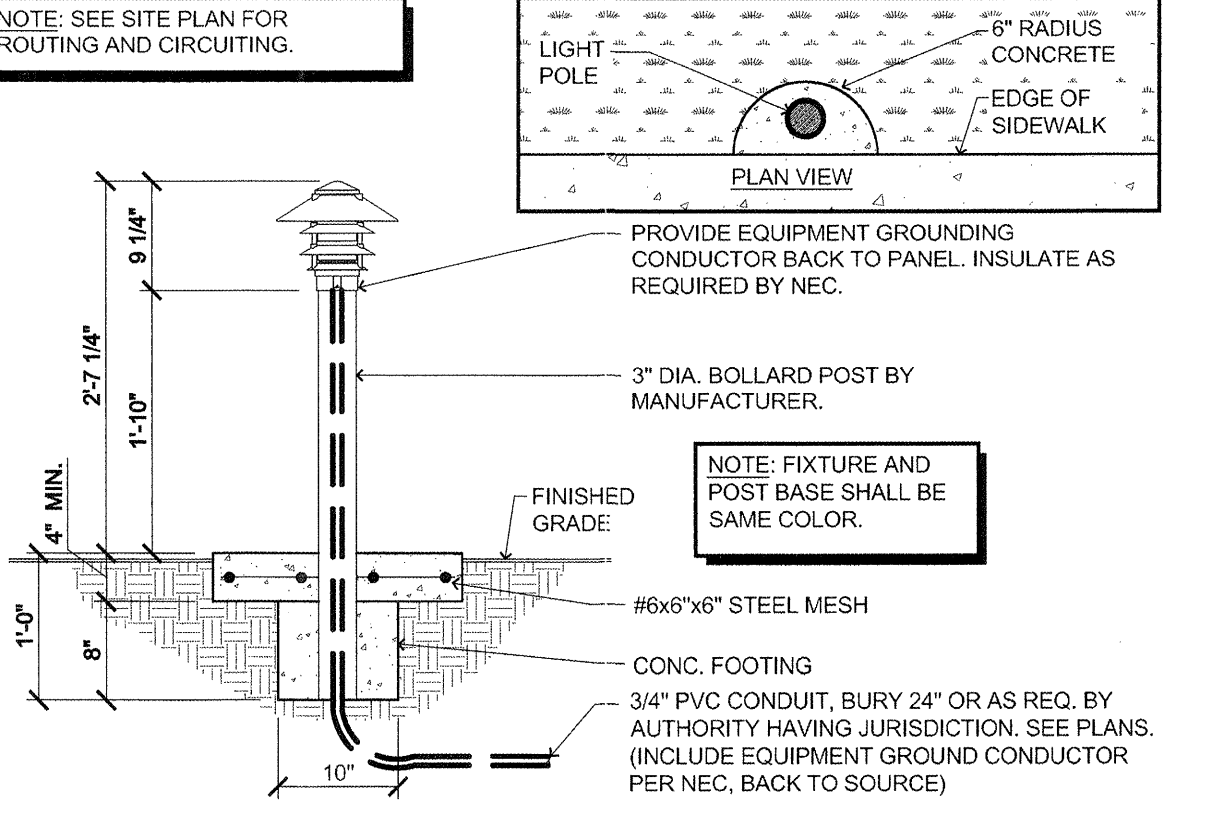
7 **LANDSCAPE LIGHT BASE/POLE**
 SCALE: 3/4" = 1'-0"
 T:\02SITE\16\850VOLT\02850009



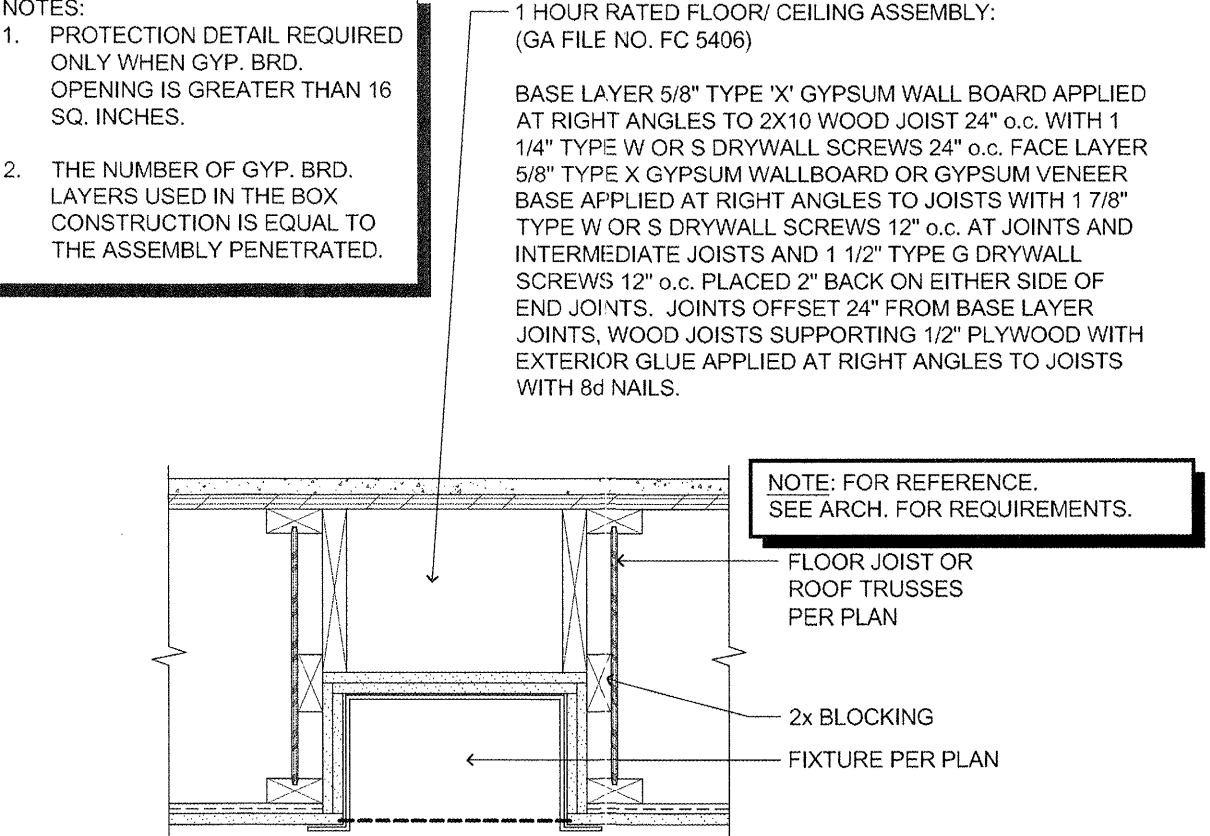
6 **FIXTURE PROTECTION**
 (HEAT LAMP, LIGHT FIXTURE/SPEAKER)
 SCALE: N.T.S.
 T:\16ELECT\7650BASIC\16950001



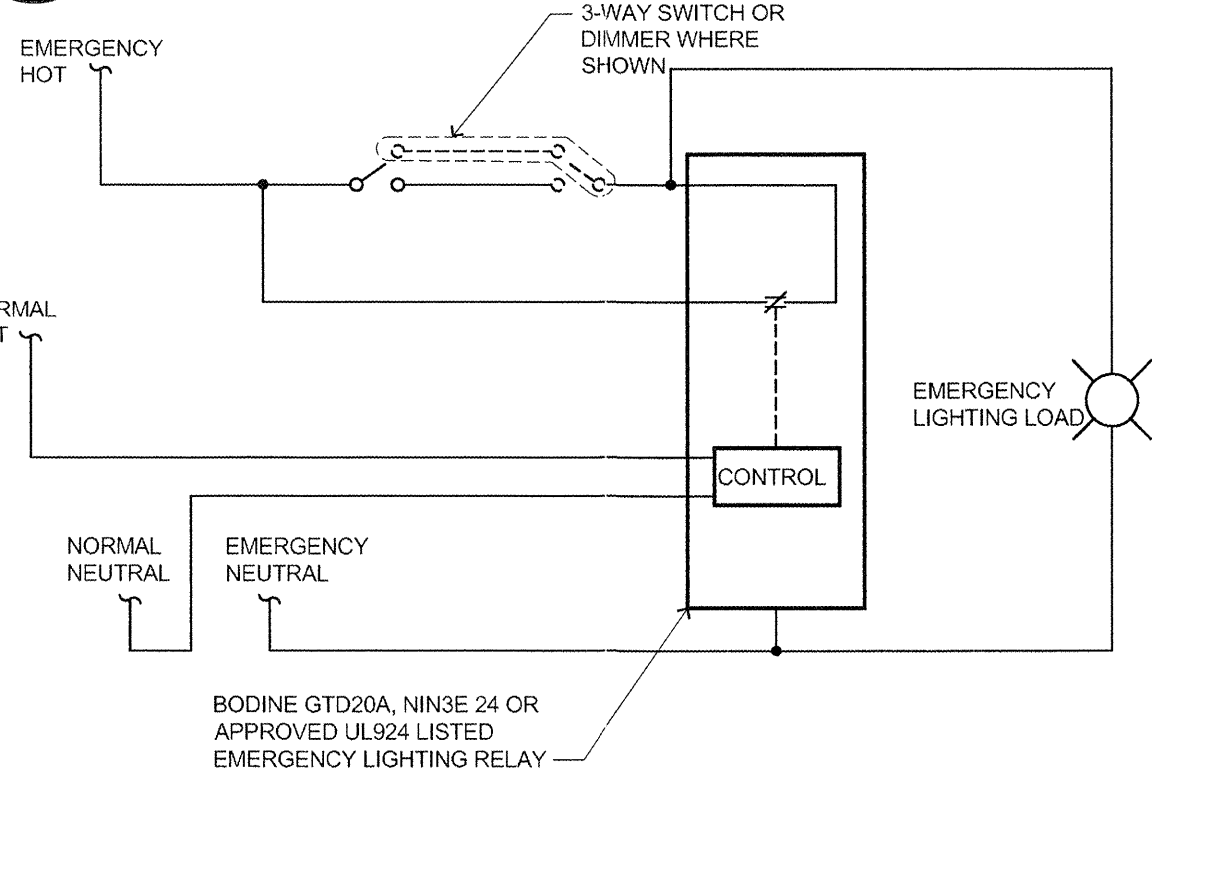
5 **SWITCHED EMERG. LIGHTING DETAIL**
 GTD20A USED AS A SWITCH BYPASS DEVICE
 SCALE: NOT TO SCALE
 T:\16ELECT\510NLT\16100113



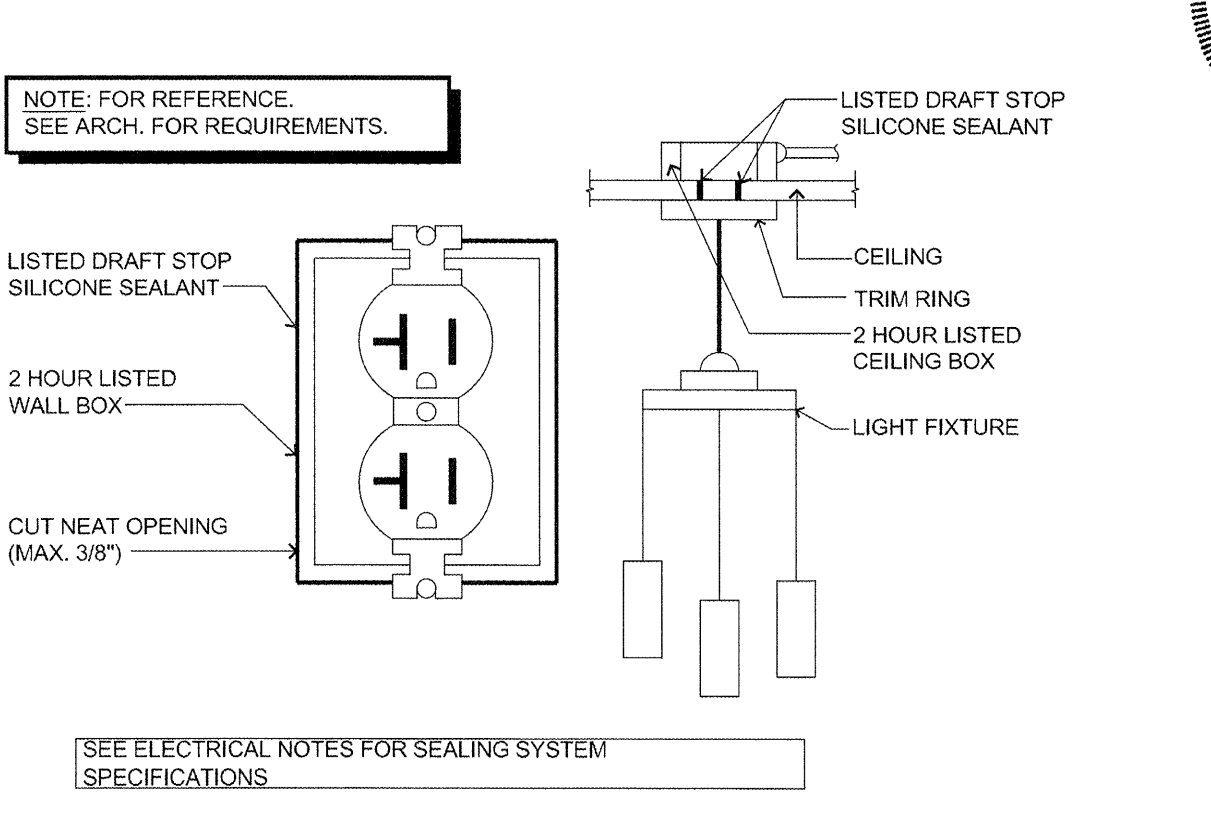
4 **PENETRATION SEALING AT FIRE RATED CONSTRUCTION**
 SCALE: N.T.S.
 T:\16ELECT\9000CTRL\16900002



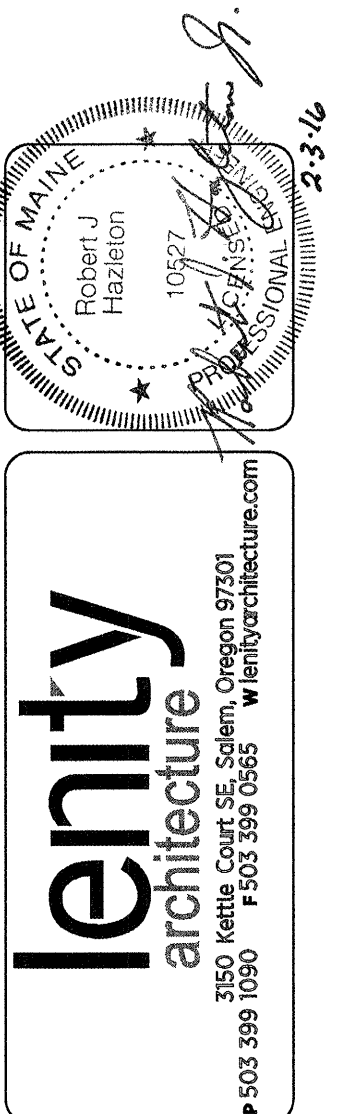
3 **CORRIDOR/EXT. LIGHT CONTROLLER**
 SCALE: N.T.S.
 T:\16ELECT\9000CTRL\16900004



2 **ELEC. PANEL AT 1HR RATED WALL (FIRE RATED)**
 SCALE: 1-1/2" = 1'-0"
 T:\16ELECT\7000COMM\16700125



1 **PARKING LOT LIGHT BASE**
 SCALE: 3/4" = 1'-0"
 T:\02SITE\16\850VOLT\02850007



lenity
 architecture
 3150 Kettle Court SE, Salem, Oregon 97301
 P: 503.399.1090 F: 503.399.0545 W: lenityarchitecture.com

COLSON AND COLSON
 GENERAL CONTRACTOR, INC.
 2280 McGILCHRIST STREET SE, SUITE 200
 SALEM, OREGON, 97302
 PHONE (503) 586-7401

PORTLAND
 RETIREMENT RESIDENCE
 802 OCEAN AVE. PORTLAND, MAINE 04103

ELECTRICAL
DETAILS

DATE: 8/28/2015
 REVISED DATE:
 SHEET: E2.2b