

**lenity**  
architecture

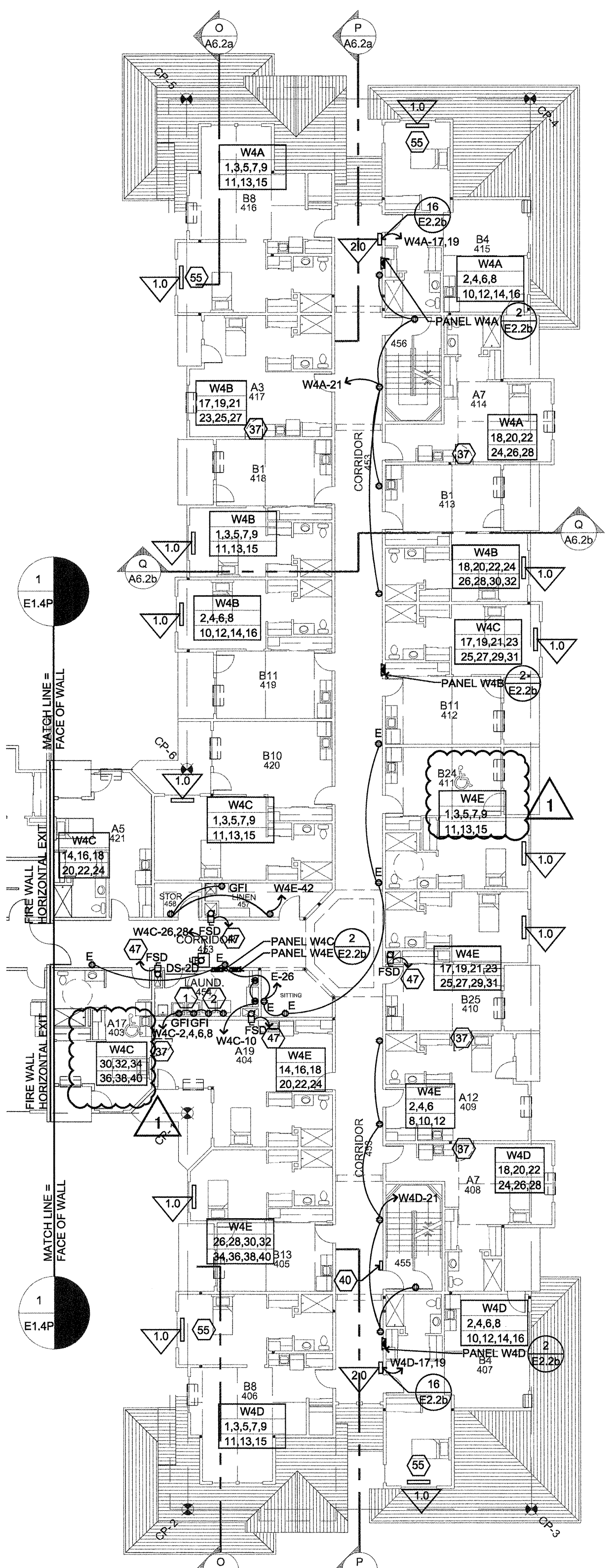
3150 Vette Court SE, Salem, Oregon 97302  
P: 503.399.1030 F: 503.399.0585

**COLSON AND COLSON**  
GENERAL CONTRACTOR, INC.  
2280 MCGILCHRIST STREET SE, SUITE 200  
SALEM, OREGON 97302  
PHONE (503) 566-7401

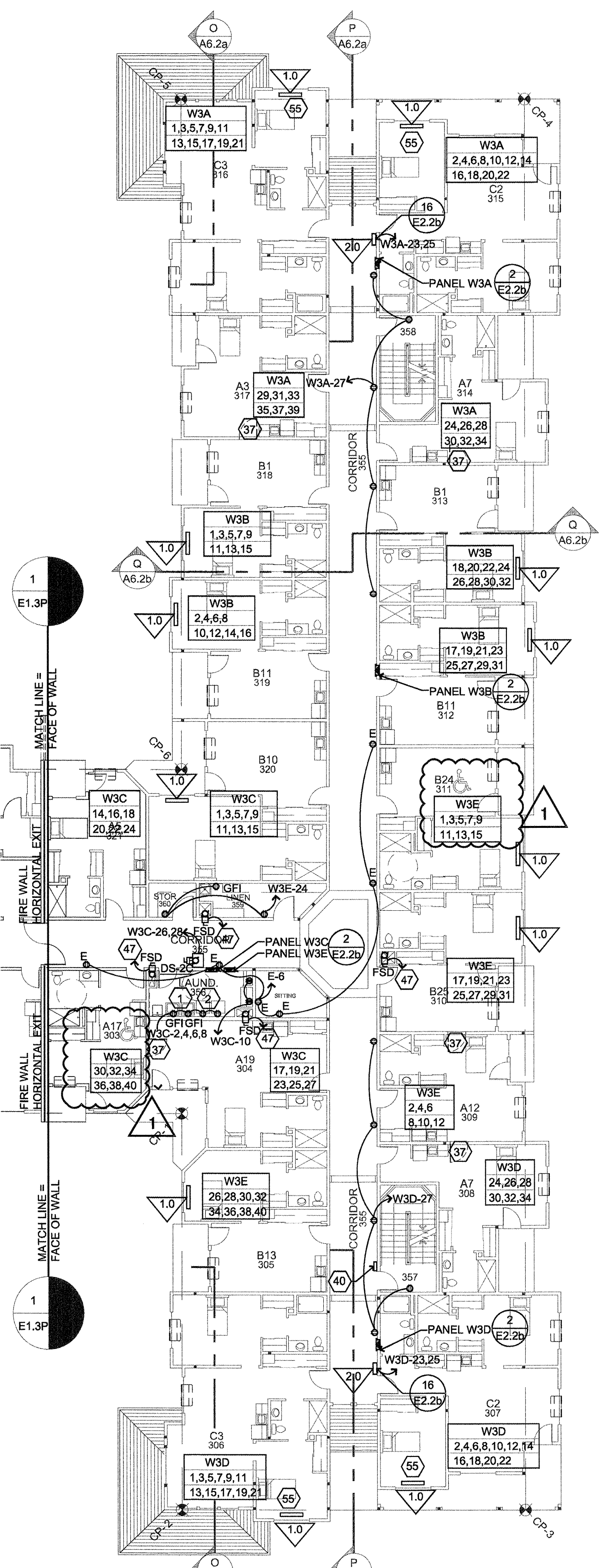
**PORTLAND**  
RETIREMENT RESIDENCE  
802 OCEAN AVE., PORTLAND, MAINE 04103

**WING 'B'**  
POWER  
PLAN

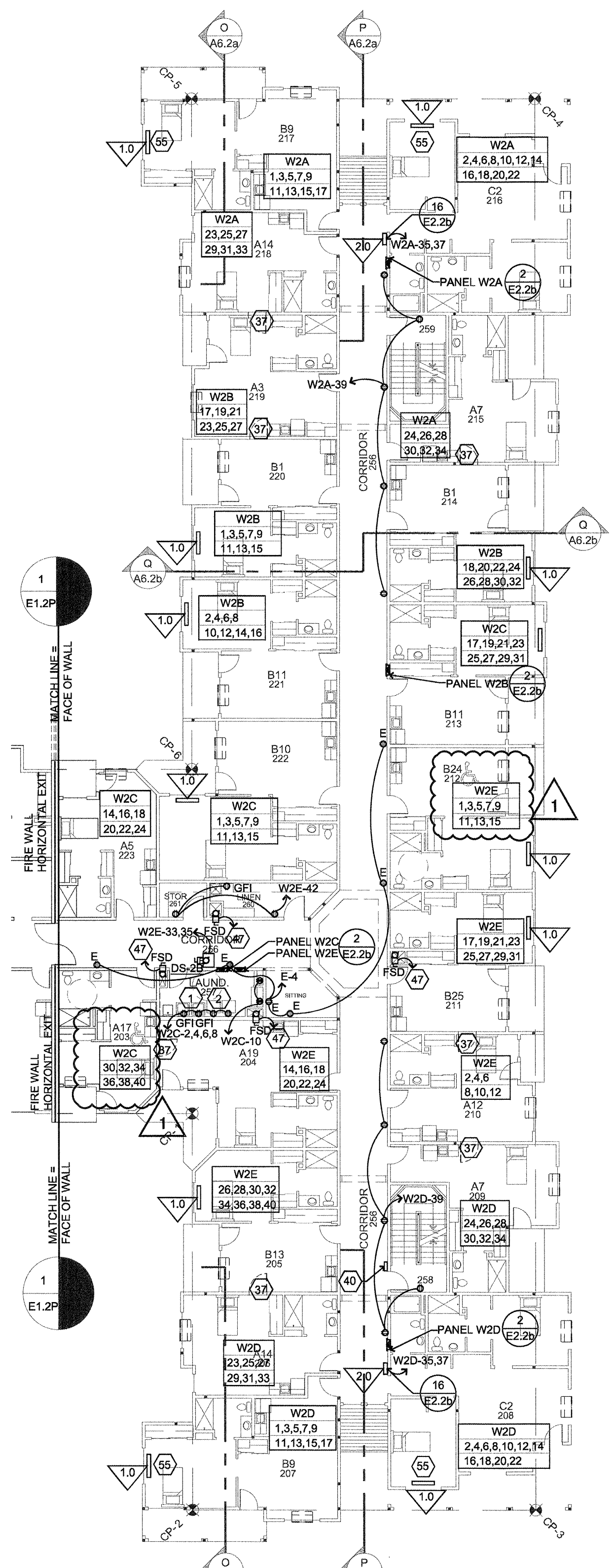
DATE: 8/28/2015  
REVISED DATE: 9/22/2015  
SHEET: E1.5P



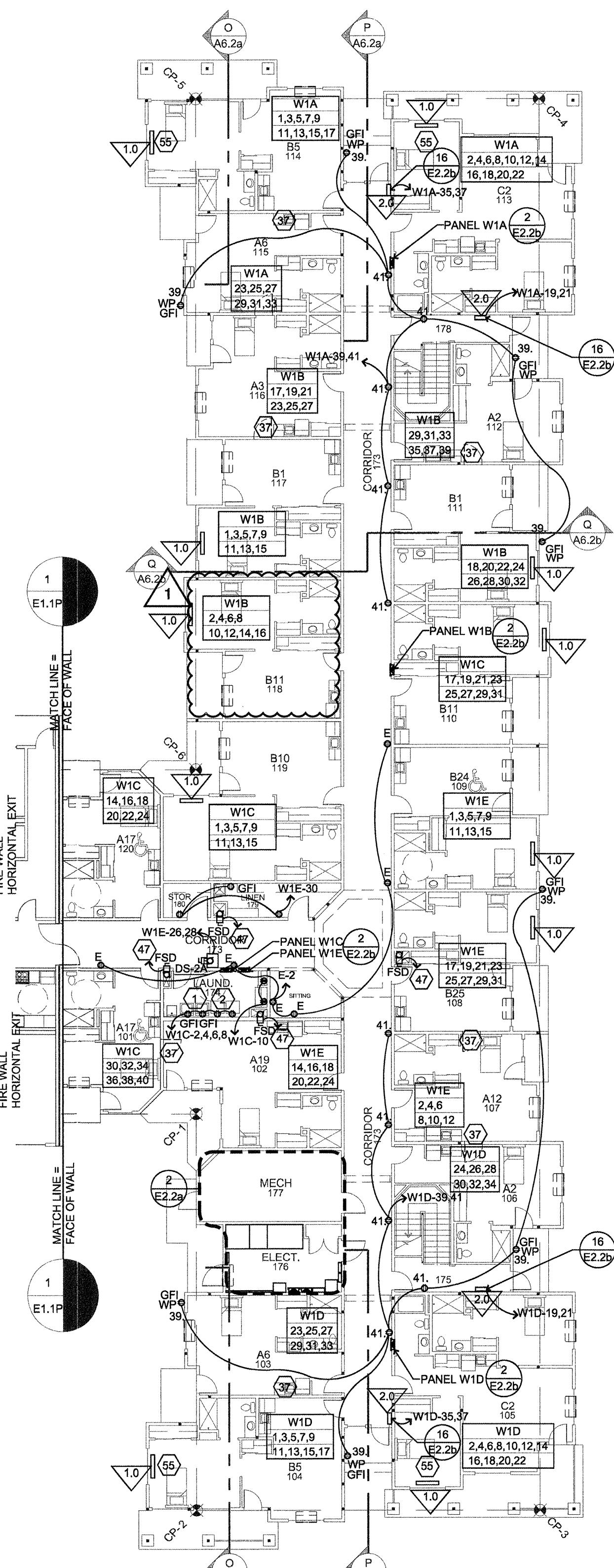
**4 FOURTH FLOOR - POWER**  
SCALE: 1/16" = 1'-0"



**3 THIRD FLOOR - POWER**  
SCALE: 1/16" = 1'-0"



**2 SECOND FLOOR - POWER**  
SCALE: 1/16" = 1'-0"



**1 FIRST FLOOR - POWER**  
SCALE: 1/16" = 1'-0"

ELECTRICAL MOUNTING HEIGHTS	
ITEM:	HEIGHT A.F.F. TO CENTER LINE:
THERMOSTATS	48"
DOOR HOLDERS	75" TO CENTER
EMERGENCY CALL	40"
SPEAKERS & PULL STATIONS	42"
WALL LIGHTS IN CORRIDORS	80" TO CENTER LINE
EXTERIOR WALL LIGHTS	96" TO CENTER LINE (J.N.O.)
OUTLETS (COMMON AREAS)	17"
OUTLETS (SUITE AREAS)	24"
LIGHT SWITCH	44"
COUNTER OUTLETS	44" TO BOTTOM
STAIR LIGHTS	2" TO BOTTOM, ABOVE TREAD
ELECTRICAL PANEL	80" TO TOP OF PANEL
BATHROOM WALL VANITY LIGHT	6'-11" TO CENTER (SEE NOTE #1)

ELECTRICAL LEGEND	
	RECESSED FLUORESCENT LIGHT FIXTURE
	SURFACE MOUNT FLUORESCENT LIGHT FIXTURE
	OPEN CHANNEL FLUORESCENT, TYPE INDICATED
	WALL MOUNT FIXTURE, TYPE INDICATED
	SURFACE MOUNT OR CHAIN HUNG FIXTURE, TYPE INDICATED
	RECESSED FIXTURE, TYPE INDICATED
	AREA OF RESCUE SIGN - SEE LIGHTING SCHEDULE
	EXIT LIGHT, DIRECTIONAL ARROWS AS INDICATED.
	WIRE ALL EXIT LIGHTS TO NEAREST EM LIGHT CIRCUIT.
	S.P.S.T. SWITCH, DIMMER SWITCH, FAN SPEED CONTROL SWITCH
	3-WAY SWITCH, PILOT LIGHT SWITCH, KEYED SWITCH
	AUTOMATIC WALL SWITCH
	DUPLEX RECEPTACLE, SPLIT WIRED WITH 1/2 SWITCHED, ABOVE COUNTER
	DOUBLE DUPLEX (TWO) DUPLEX RECEPTACLE
	FLOOR BOX RECEPTACLE
	208V, 1P RECEPTACLE - 20A EXCEPT WHEN NOTED
	THROUGH WALL PTAC UNIT. SEE MECHANICAL.
	DISCONNECT SWITCH
	FUSED DISCONNECT SWITCH
	TRANSFORMER
	ELECTRICAL PANEL OR ENCLOSURE, DESIGNATION NOTED
	ELECTRICAL MOTOR LOAD
	CONTROL CABLE
	SPECIAL RECEPTACLE
	TELEVISION SIGNAL CONNECTION
	TELEPHONE CONNECTION
	EMERGENCY PULL SWITCH
	THERMOSTAT
	TIMESWITCH
	TRANSFORMER
	CEILING MOUNTED OCCUPANCY SENSOR
	JUNCTION BOX
	"E" INDICATES WIRING TO EMERGENCY POWER. SEE SCHEDULE ON E2.1.
	WP WEATHER PROOF
	GFI GROUND FAULT CURRENT INTERRUPTING RECEPTACLE
	CVO CONVENIENCE OUTLET

ELECTRICAL HEAT SCHEDULE	
2.0	2 KILOWATT RECESSED WALL HEATER WITH INTEGRAL THERMOSTAT. 208 VOLT.
1.5	1.5 KILOWATT RECESSED WALL HEATER WITH INTEGRAL THERMOSTAT. 120 VOLT.
1.2	1250 WATT BASEBOARD HEATER CONTROLLED BY WALL THERMOSTAT. 120 VOLT.
1B	1 KILOWATT RECESSED WALL HEATER WITH INTEGRAL THERMOSTAT. 120 VOLT.
1.0	1 KILOWATT BASEBOARD HEATER CONTROLLED BY WALL THERMOSTAT. 120 VOLT.
0.7	750 WATT BASEBOARD HEATER CONTROLLED BY WALL THERMOSTAT. 120 VOLT.
0.7B	750 WATT LIQUID FILLED ELEC. HYDRONIC BASEBOARD HEATER CONTROLLED BY WALL THERMOSTAT. BERKO HBB750. 120 VOLT.
0.5	500 WATT RECESSED WALL HEATER WITH INTEGRAL THERMOSTAT. 120 VOLT.
0.5B	500 WATT BASEBOARD HEATER CONTROLLED BY WALL THERMOSTAT. 120 VOLT.

SWITCHES AND RECEPTACLES SHALL BE LEVITON DECORA SERIES (WHITE ONLY) UNLESS SPECIFIED OTHERWISE. SEE DRAWING E2.1 WIRING DEVICES.

SEE E1.1L FOR ELECTRICAL KEYED NOTES.

8/28/2015 1:10 PM User: j451242015 251 PM: hdbkgen - Reg:\projects\main\portland\retirement\power\wing E1.5P