

lenity
architecture
3150 Vette Court, SE, Salem, Oregon 97302
P: 503.399.1090 F: 503.399.0585 www.lenityarchitecture.com

COLSON AND COLSON
GENERAL CONTRACTOR, INC.
2280 McJILCHRIST STREET, SE, SUITE 200
SALEM, OREGON, 97302
PHONE (503) 586-7401

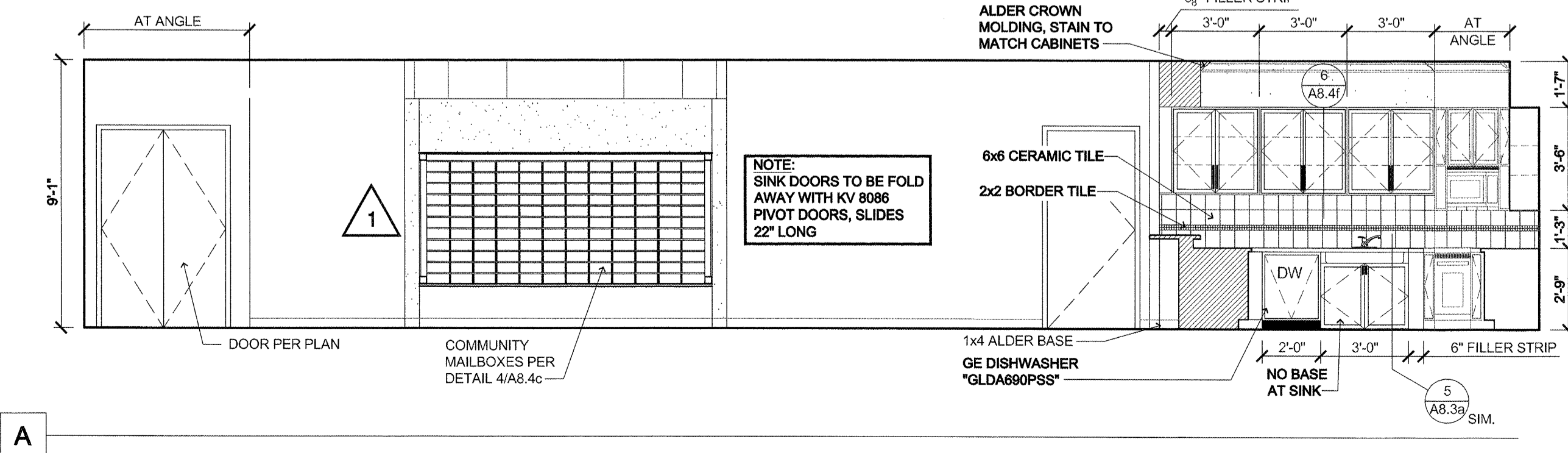
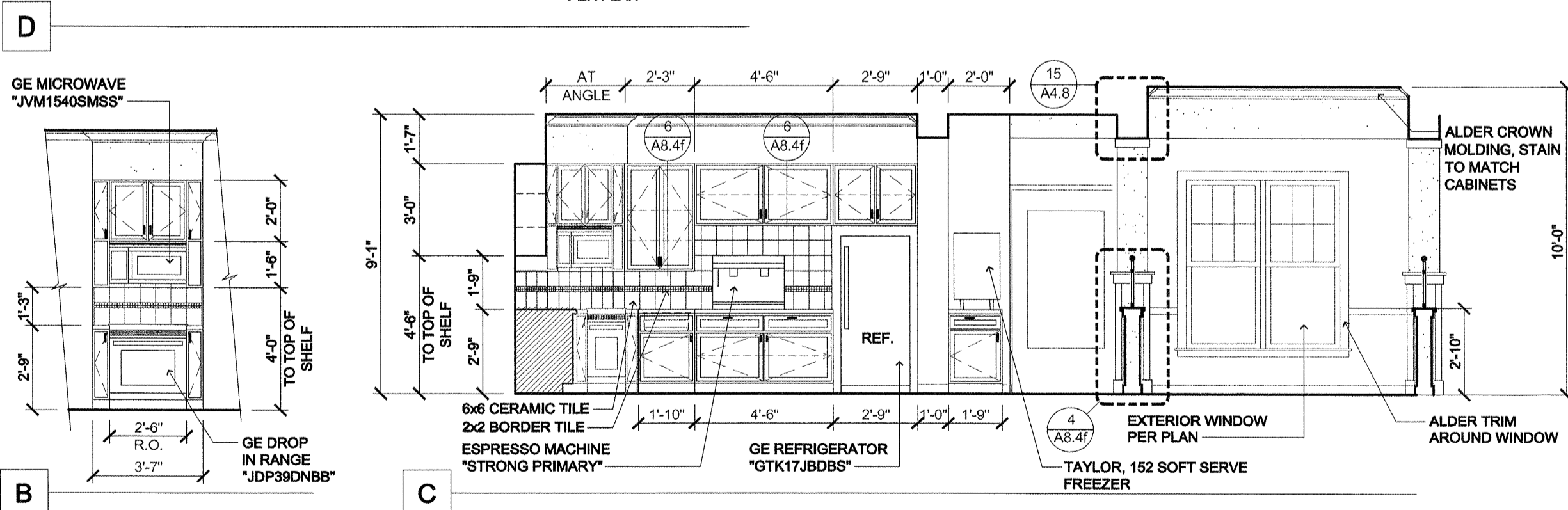
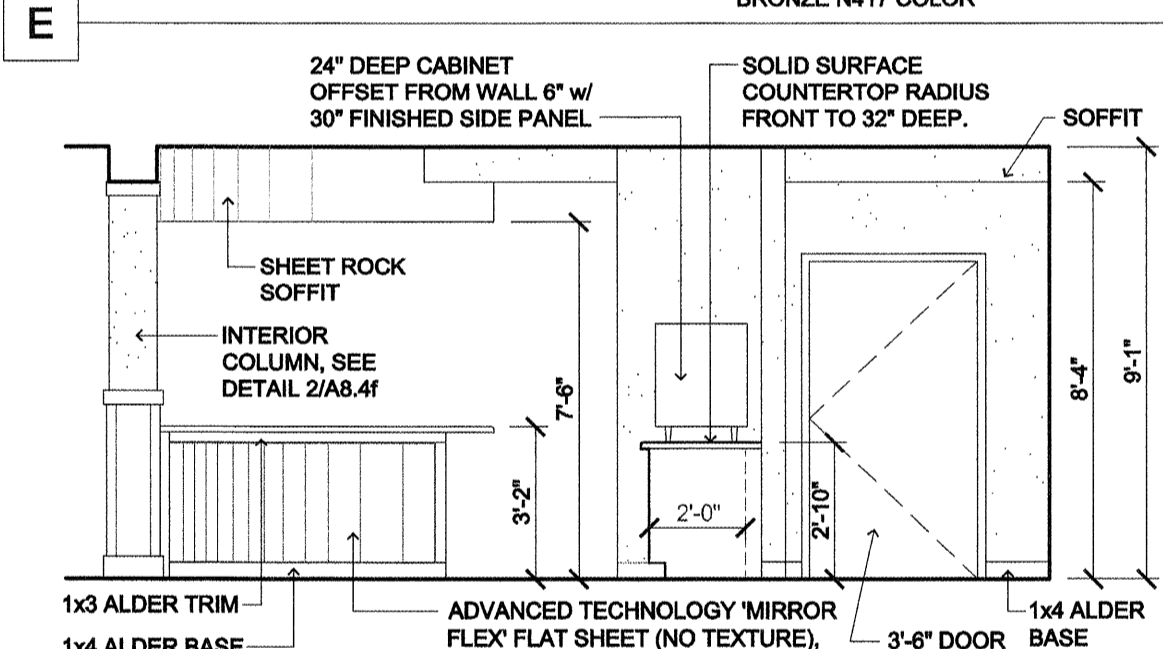
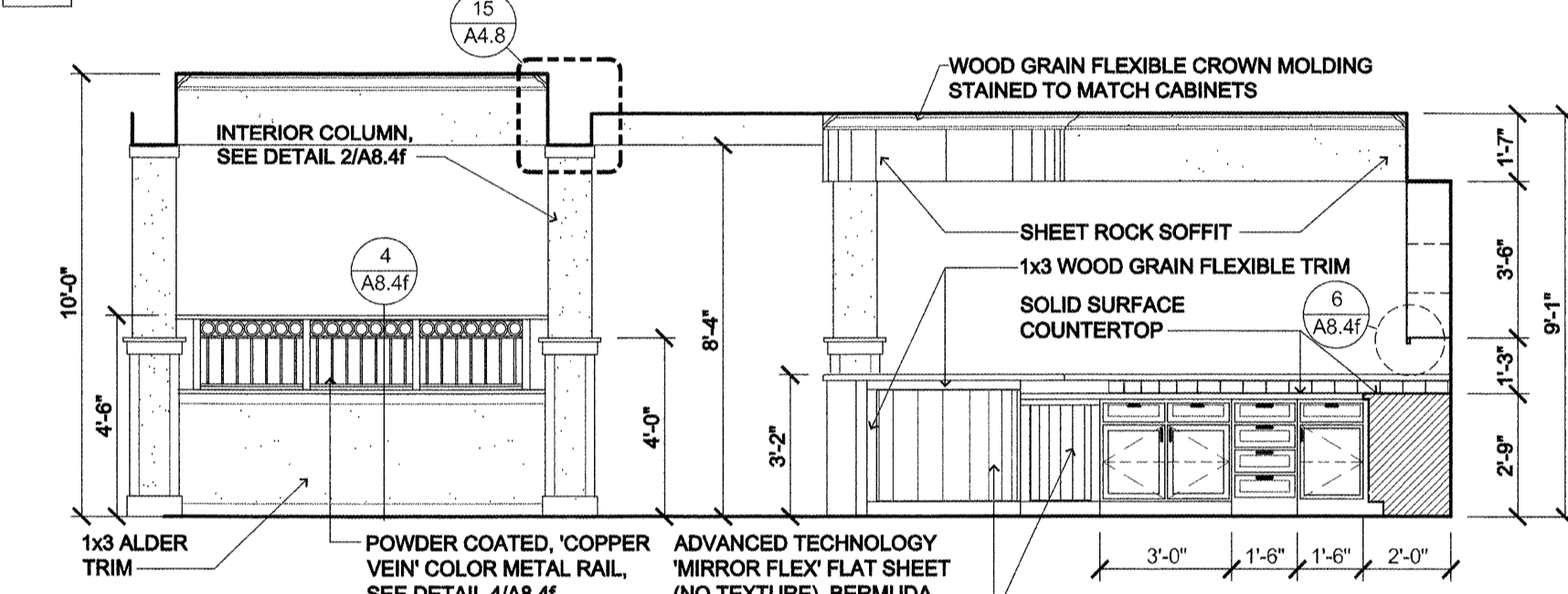
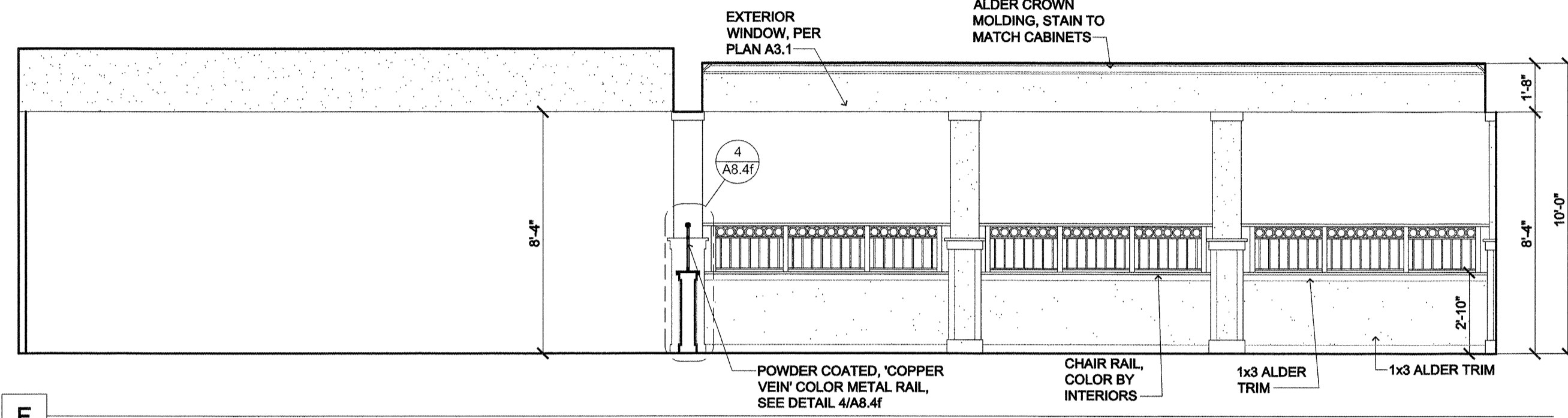
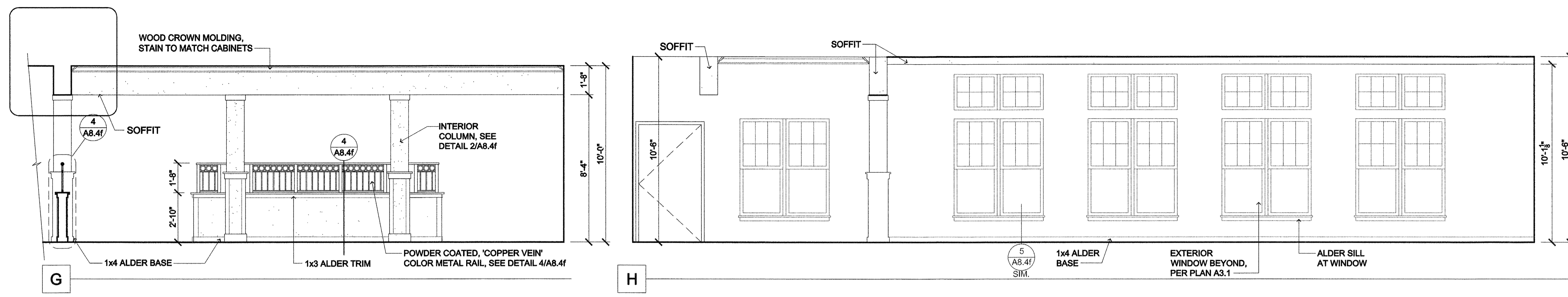
PORTLAND
RETIREMENT RESIDENCE
802 OCEAN AVE., PORTLAND, MAINE 04103

INTERIOR
ELEVATIONS
AND DETAILS

DATE
8/28/2015

REVISED DATE
9/22/2015

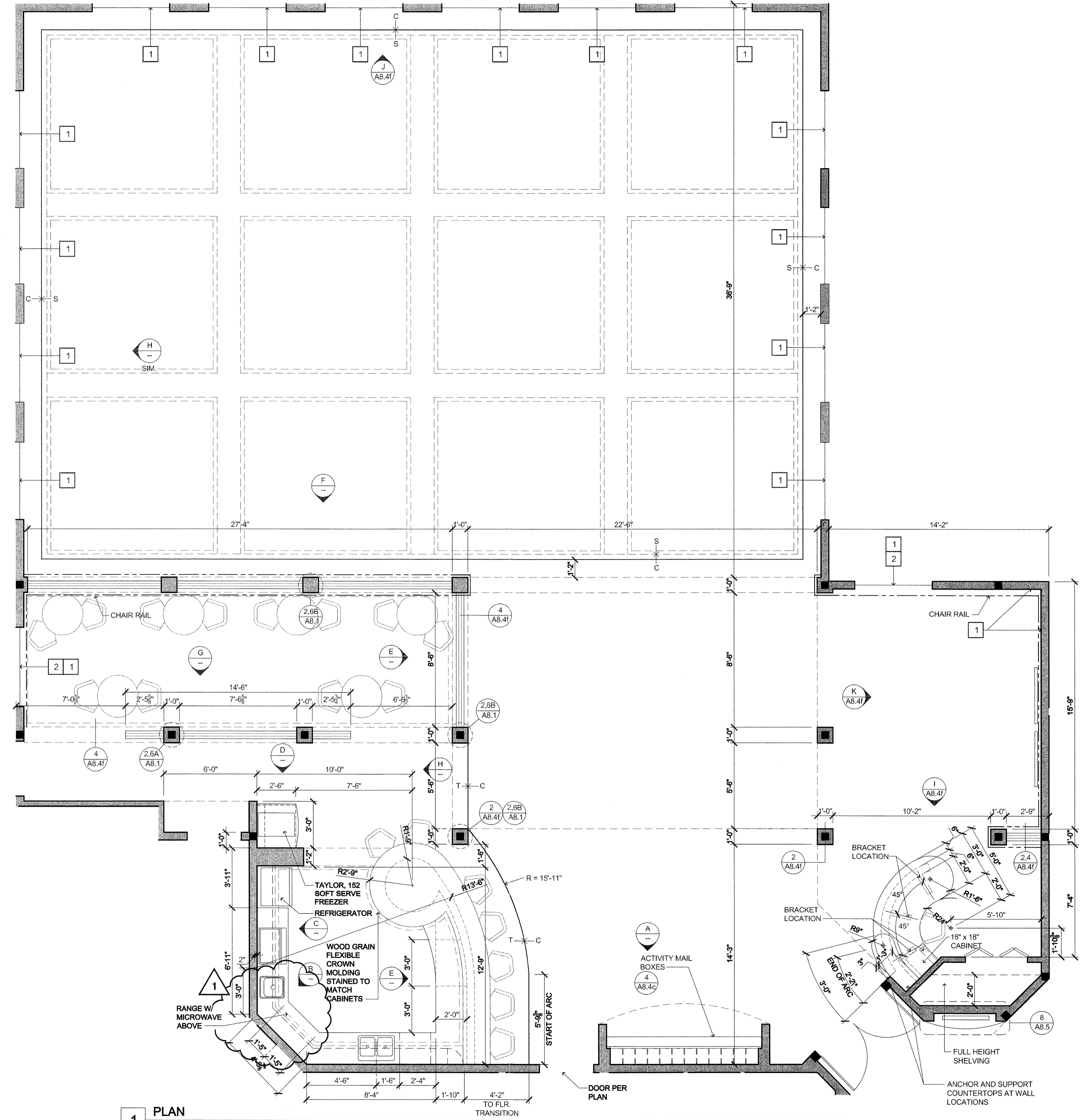
SHEET
A8.4e



BISTRO/ACTIVITY LEGEND

- 1 - WINDOW SILL, SEE 5/A8.4f
- 2 - TRIM AT WINDOW
- - - CHAIR RAIL
- - - FLOOR FINISH TRANSITION
- S - SPACIA FLOORING PER INTERIORS
- T - TILE FLOORING PER INTERIORS
- C - CARPET FLOORING PER INTERIORS

NOTE:
ALL ALDER TO BE STAINED TO MATCH
BISTRO CABINETS.



1 PLAN
INTERIOR ELEVATIONS
(CAFE / BISTRO)
SCALE: 1/4" = 1'-0"