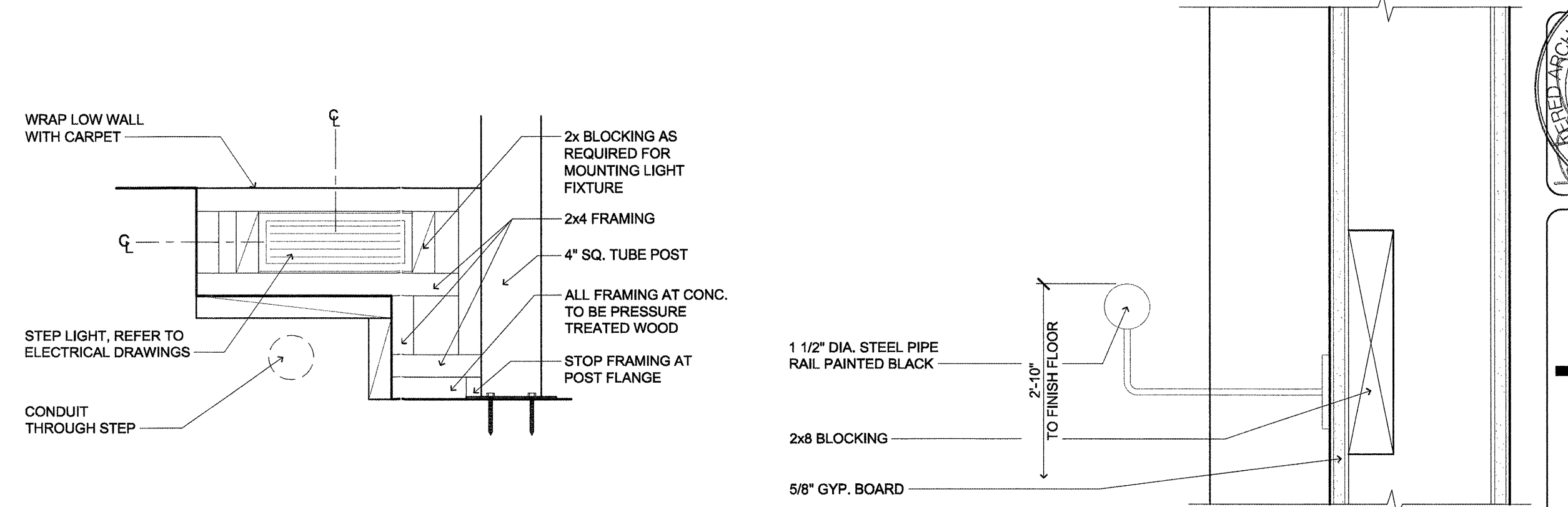
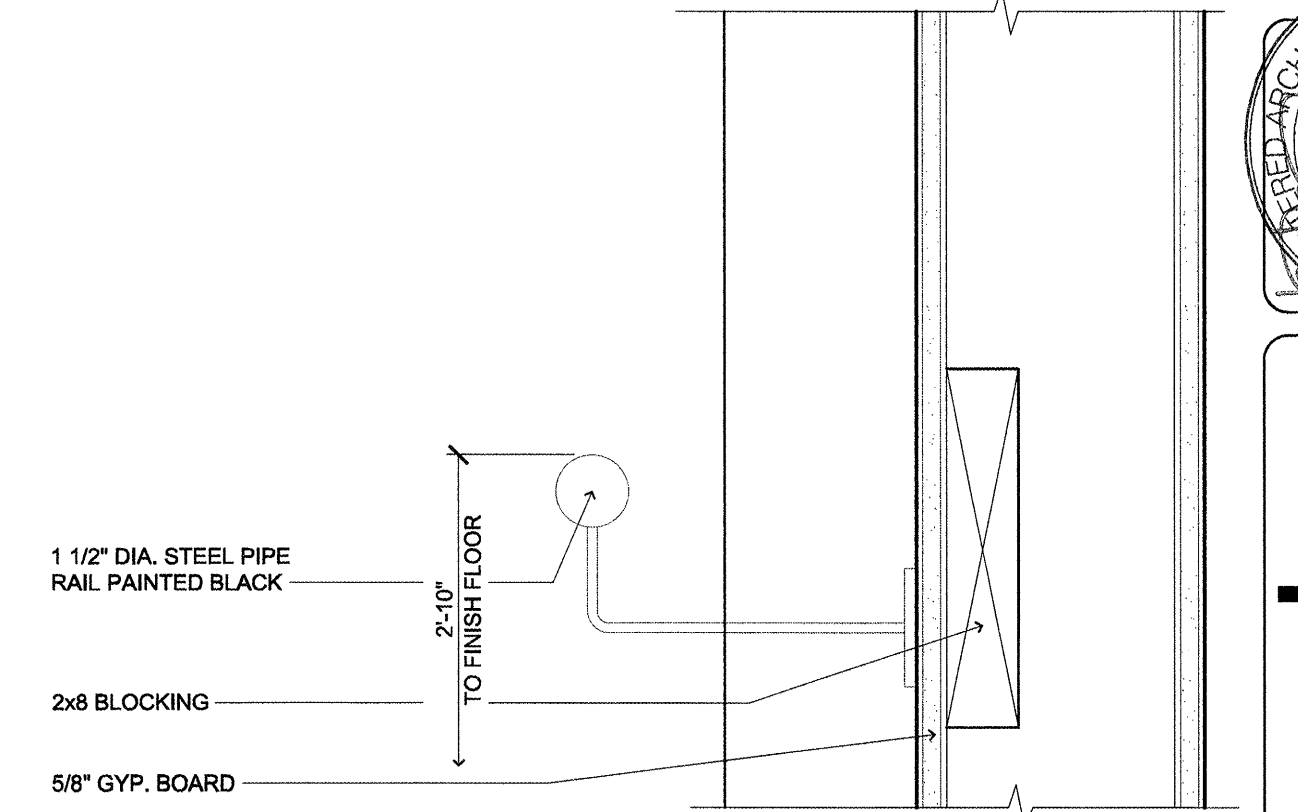


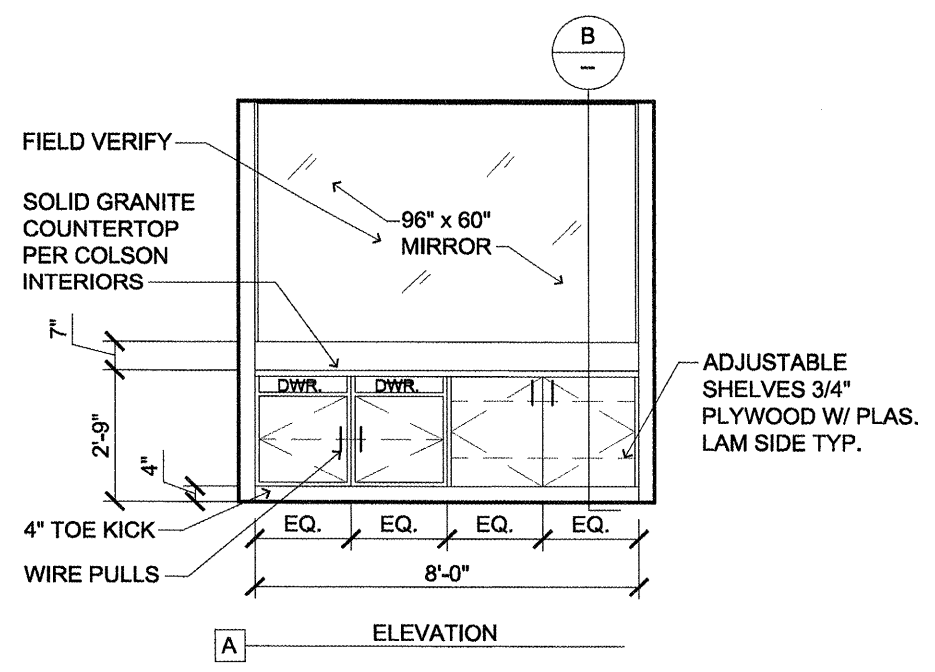
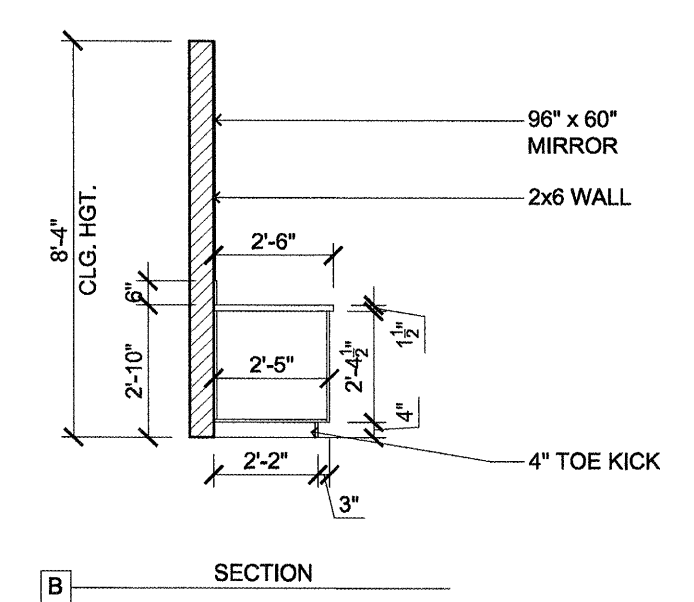
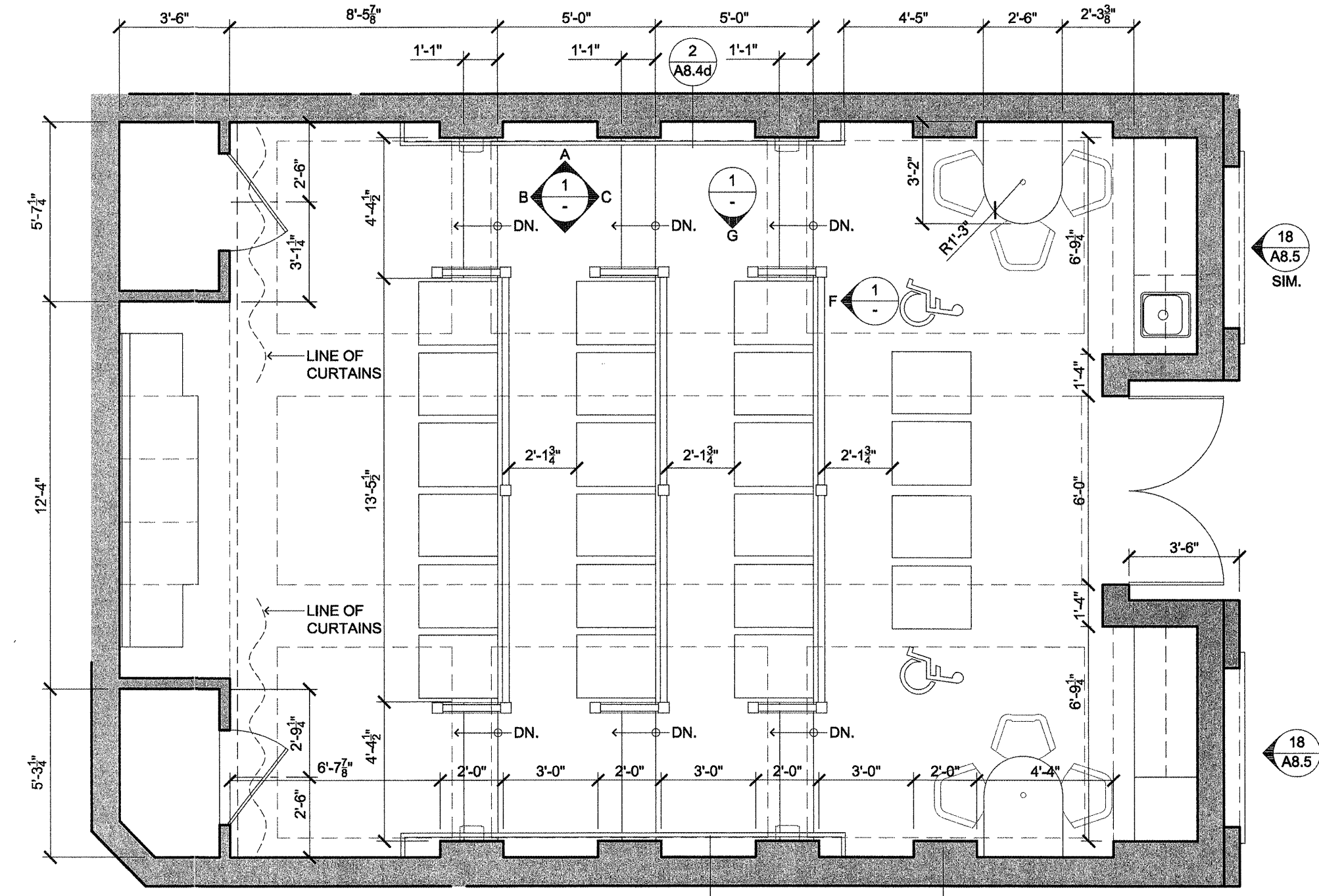
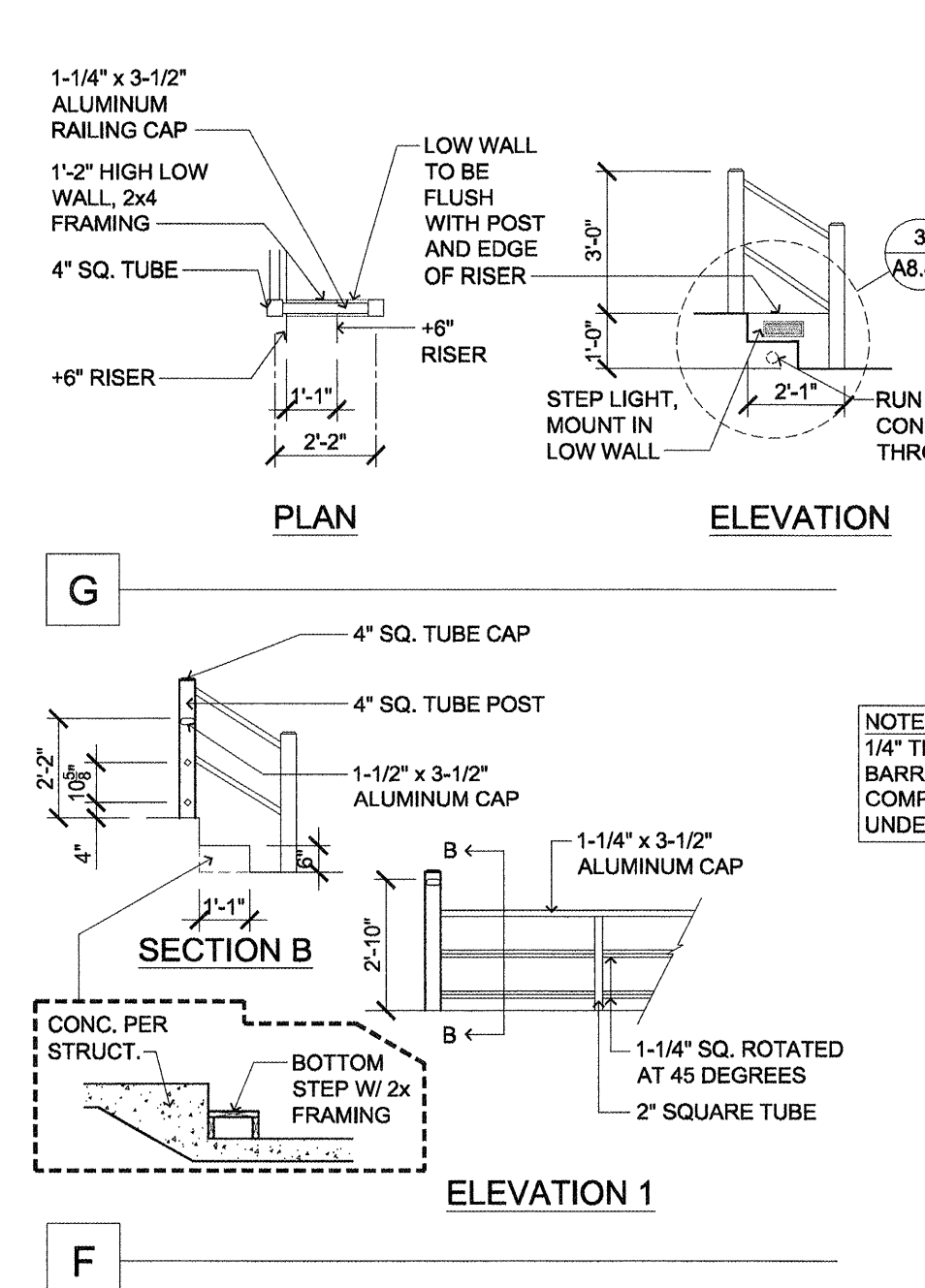
4 MEDIA ROOM AV CABINET (TOE KICK VENTING)
SCALE: 1" = 1'-0"



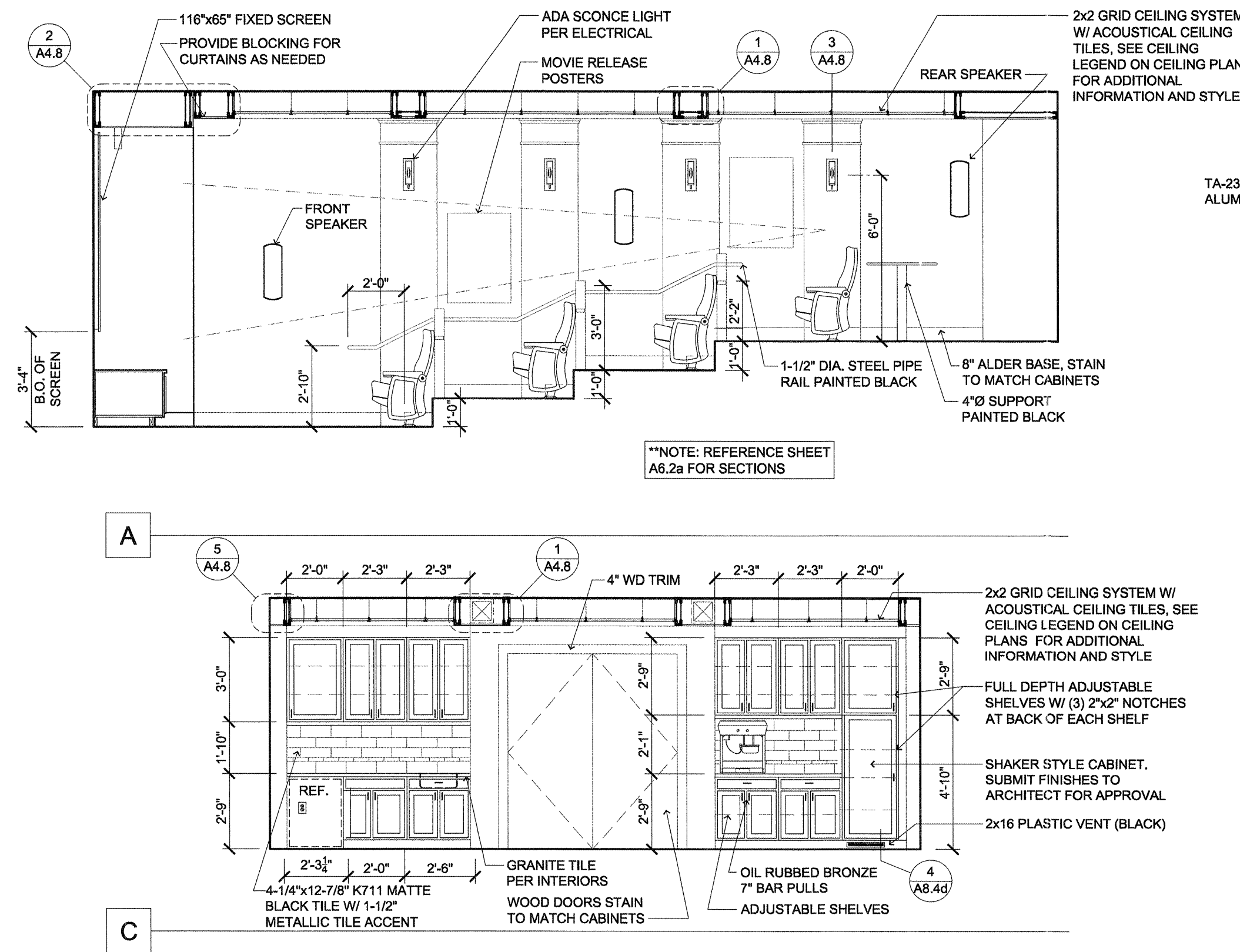
3 STEP LIGHTING (MEDIA ROOM)
SCALE: 1-1/2" = 1'-0"



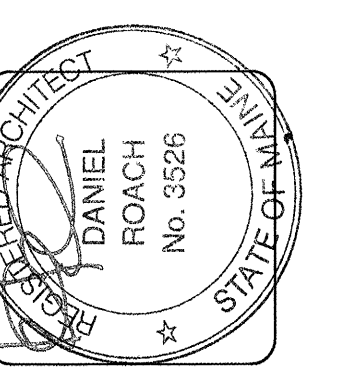
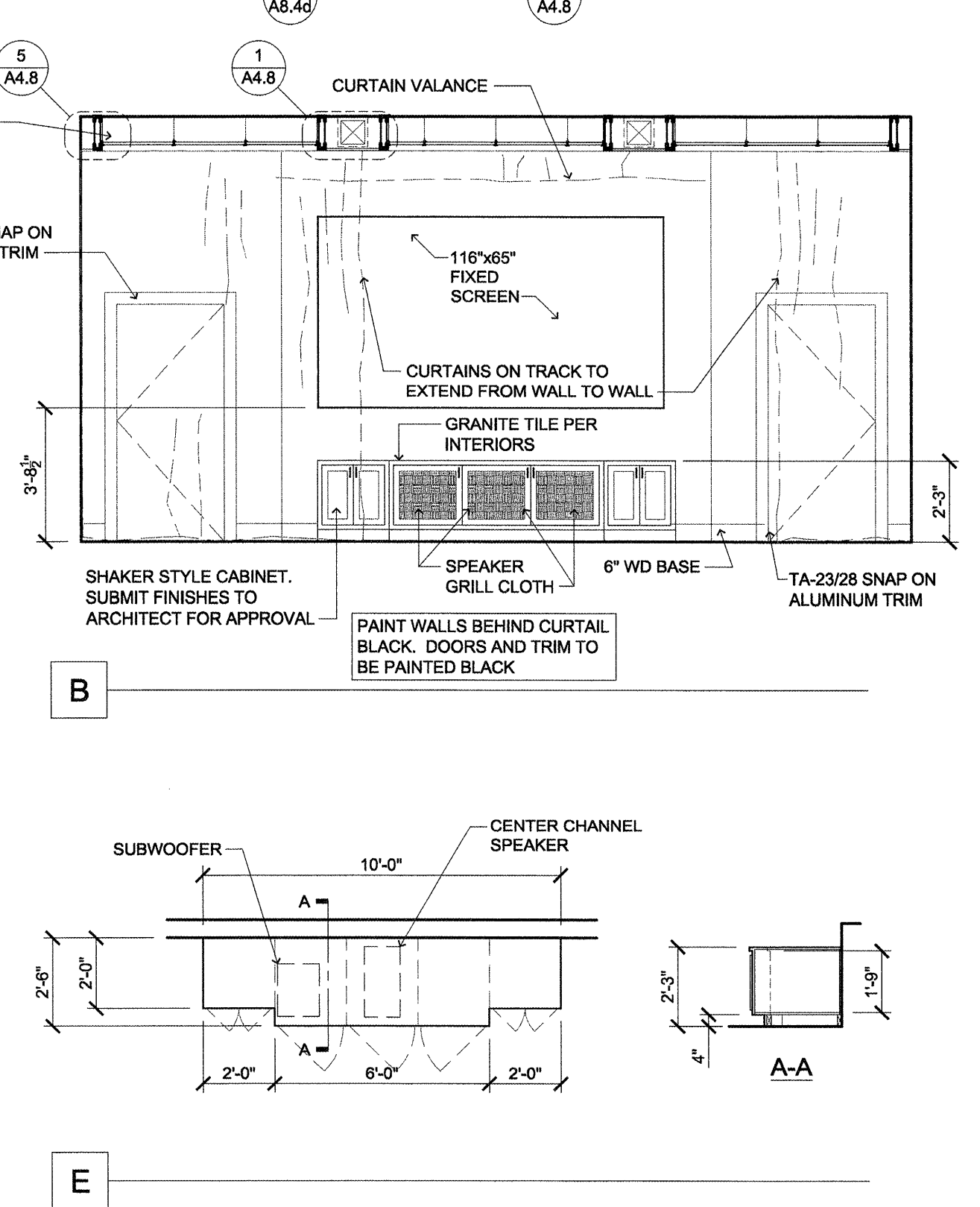
2 MEDIA ROOM HANDRAIL (METAL RAILING)
SCALE: 3" = 1'-0"



5 INTERIOR ELEVATIONS (WAITER SUPPORT COUNTER)
SCALE: 1/4" = 1'-0"



1 INTERIOR ELEVATIONS (MEDIA ROOM)
SCALE: 1/2" = 1'-0"



lenity architecture
3150 Kettle Creek SE, Salem, Oregon 97301
P: 503.399.1050 F: 503.399.6585

COLSON AND COLSON
GENERAL CONTRACTOR, INC.
2260 MCGILCHRIST STREET SE, SUITE 200
SALEM, OREGON 97302
PHONE (503) 566-7401

PORTLAND
RETIREMENT RESIDENCE
802 OCEAN AVE. PORTLAND, MAINE 04103

INTERIOR ELEVATIONS AND DETAILS
A8.4d

DATE: 8/28/2015
REVISED DATE:
SHEET: A8.4d