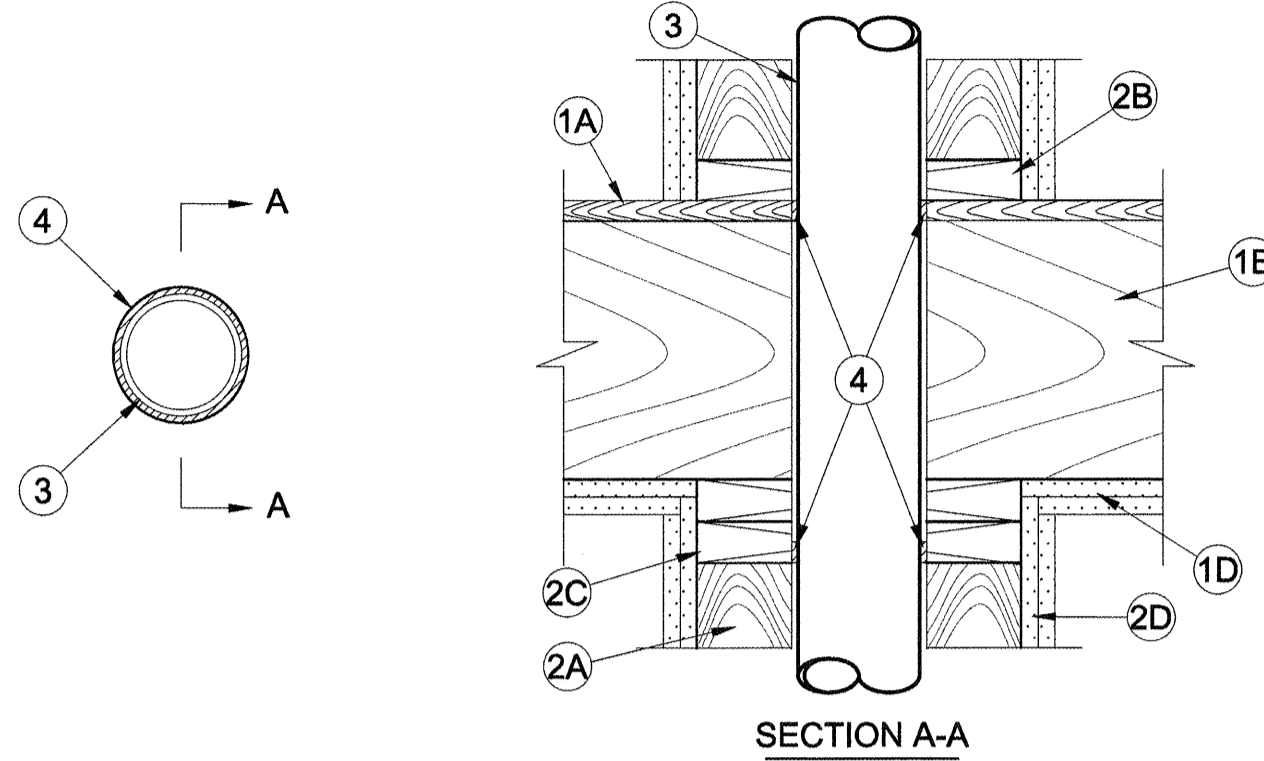


System No. F-C-1009

F Rating - 1 and 2 Hr (See Item 1)
T Rating - 1 Hr and 2 Hr (See Item 1)
L Rating At Ambient - Less Than 1 CFM/sq ft
L Rating At 400 F - 4 CFM/sq ft



SECTION A-A

1. Floor-Ceiling Assembly - The 1 or 2 hr fire-rated solid or trussed lumber joist floor-ceiling assembly shall be constructed of the materials and in the manner specified in the individual L500 Series Floor-Ceiling Designs in the UL Fire Resistance Directory...

FC1009

System No. F-C-1009

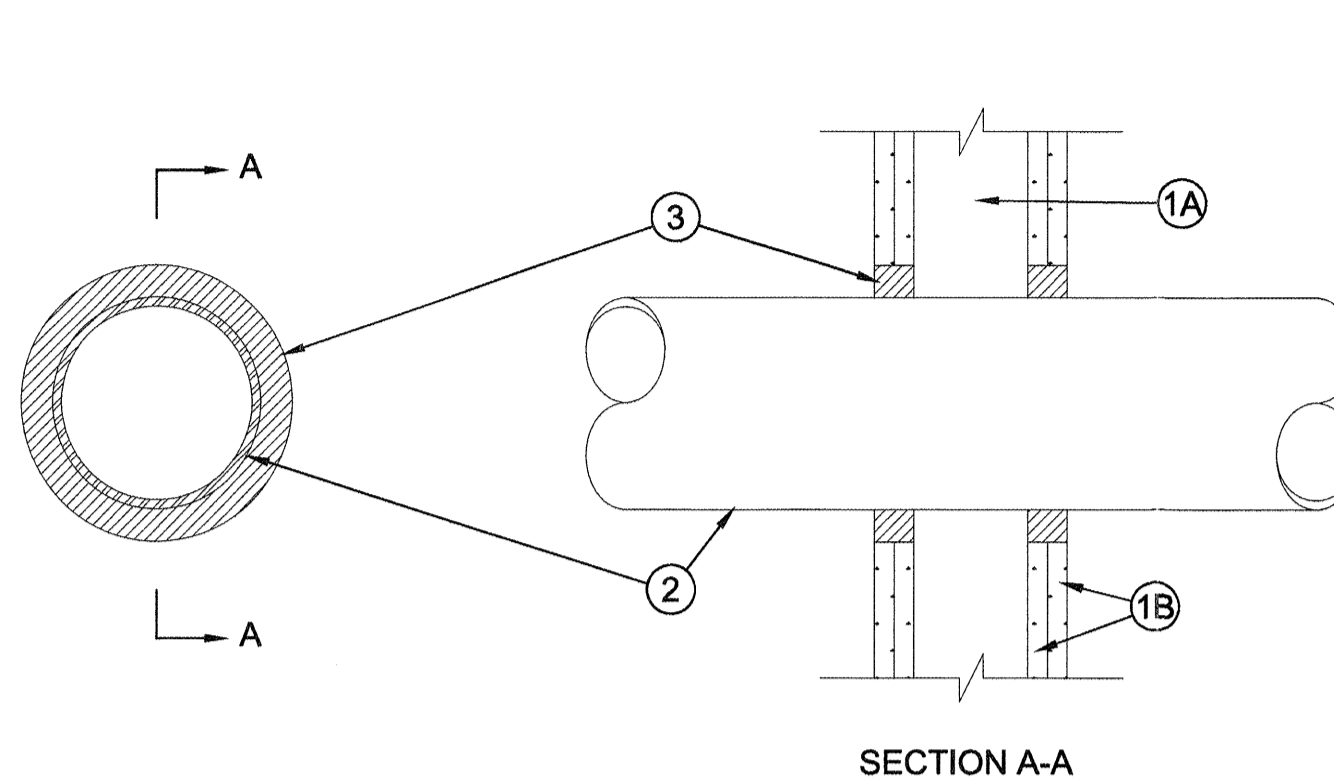
F Rating - 1 and 2 Hr (See Item 1)
T Rating - 1 Hr and 2 Hr (See Item 1)
L Rating At Ambient - Less Than 1 CFM/sq ft
L Rating At 400 F - 4 CFM/sq ft

D. Steel Plate - When lumber plates are discontinuous, nom 1-1/2 in. wide No. 20 gauge (or heavier) galv steel plates shall be installed to connect each discontinuous lumber plate and to provide a form for the fill material...

FC1009

System No. W-L-1054

F Ratings - 1 and 2 Hr (See Items 1 and 3) T
Rating - 0 Hr
L Rating At Ambient - Less Than 1 CFM/Sq Ft
L Rating At 400 F - 4 CFM/Sq Ft



SECTION A-A

1. Wall Assembly - The 1 or 2 hr fire-rated gypsum wallboard/stud wall assembly shall be constructed of the materials and in the manner specified in the individual U300 or U400 Series Wall and Partition Designs in the UL Fire Resistance Directory...

WL 1054

System No. W-L-1054

F Ratings - 1 and 2 Hr (See Items 1 and 3) T
Rating - 0 Hr
L Rating At Ambient - Less Than 1 CFM/Sq Ft
L Rating At 400 F - 4 CFM/Sq Ft

2. Through-Penetrants - One metallic pipe, conduit or tubing to be installed either concentrically or eccentrically within the firestop system. The annular space shall be min 0 in. to max 2-1/4 in. Pipe may be installed with continuous point contact...

WL 1054



Reproduced by HILTI, Inc. Courtesy of Underwriters Laboratories, Inc. November 10, 2004



Page: 1 of 2



Reproduced by HILTI, Inc. Courtesy of Underwriters Laboratories, Inc. November 10, 2004



Page: 2 of 2



Reproduced by HILTI, Inc. Courtesy of Underwriters Laboratories, Inc. December 4, 2002



Page: 1 of 2



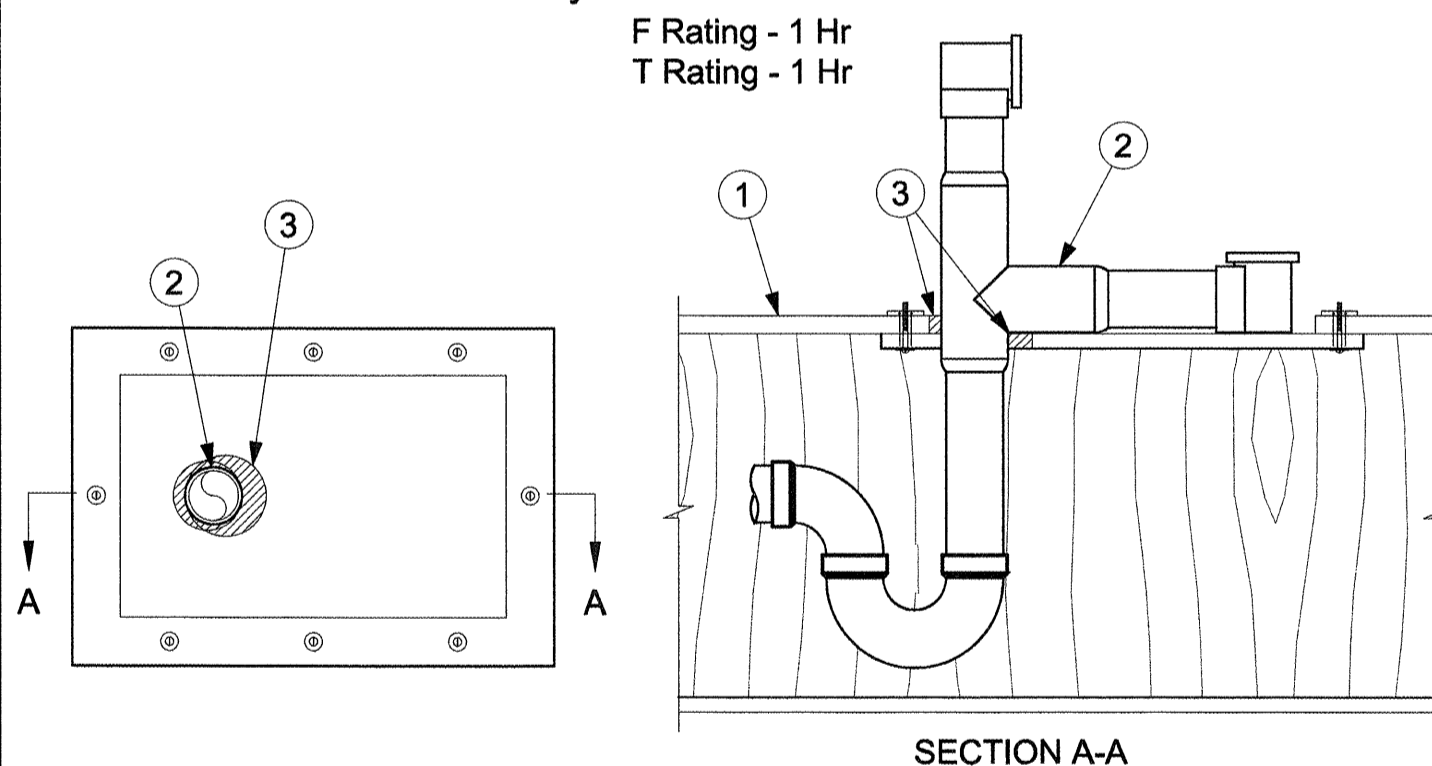
Reproduced by HILTI, Inc. Courtesy of Underwriters Laboratories, Inc. December 4, 2002



Page: 2 of 2

System No. F-C-2262

F Rating - 1 Hr
T Rating - 1 Hr



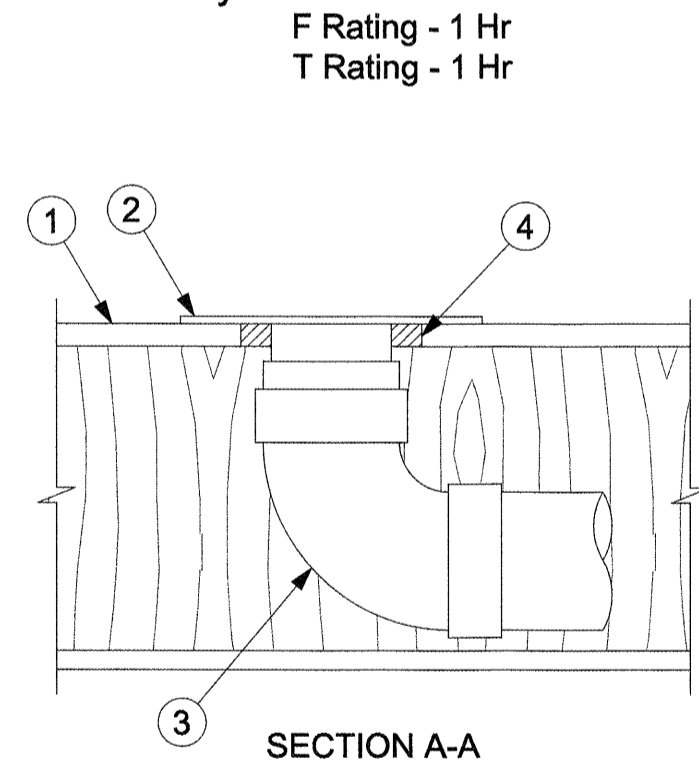
SECTION A-A

1. Floor-Ceiling Assembly - The 1 hr fire-rated solid or trussed lumber joist floor-ceiling assembly shall be constructed of the materials and in the manner specified in the individual L500 Series Floor-Ceiling Designs in the UL Fire Resistance Directory...

FC 2262

System No. F-C-2263

F Rating - 1 Hr
T Rating - 1 Hr



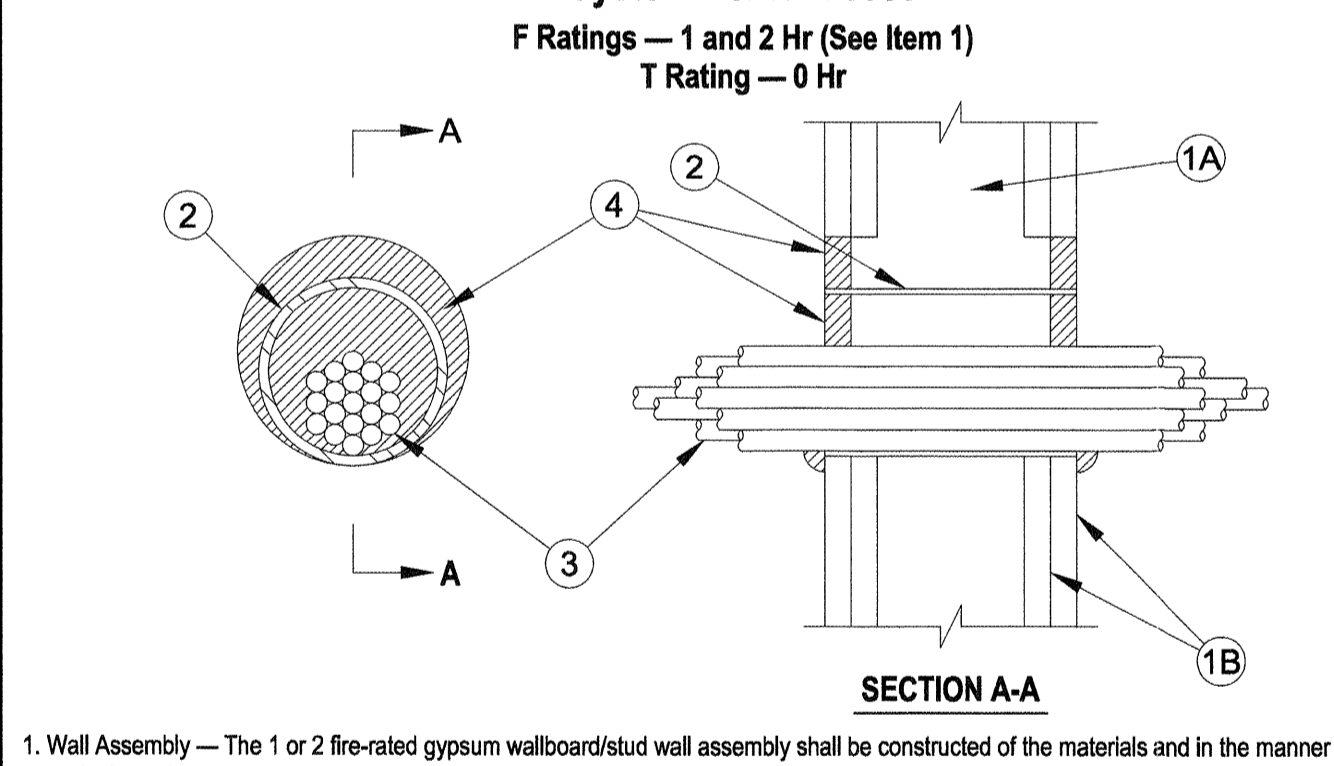
SECTION A-A

1. Floor-Ceiling Assembly - The 1 hr fire-rated solid or trussed lumber joist floor-ceiling assembly shall be constructed of the materials and in the manner specified in the individual L500 Series Floor-Ceiling Designs in the UL Fire Resistance Directory...

FC 2263

System No. W-L-3065

F Ratings - 1 and 2 Hr (See Item 1)
T Rating - 0 Hr



SECTION A-A

1. Wall Assembly - The 1 or 2 hr fire-rated gypsum wallboard/stud wall assembly shall be constructed of the materials and in the manner specified in the individual U300, U400 or V400 Series Wall and Partition Designs in the UL Fire Resistance Directory...

WL 3065

System No. W-L-3065

F Ratings - 1 and 2 Hr (See Item 1)
T Rating - 0 Hr

4. Fill, Void or Cavity Material - Sealant or Putty - Fill material applied within the annulus, flush with each end of the steel sleeve or wall surface. Fill material installed symmetrically on both sides of the wall. A min 5/8 in. (16 mm) thickness of sealant is required for the 1 or 2 hr F Rating...

WL 3065



Reproduced by HILTI, Inc. Courtesy of Underwriters Laboratories, Inc. June 01, 2004



Page: 1 of 1



Reproduced by HILTI, Inc. Courtesy of Underwriters Laboratories, Inc. June 01, 2004 (Revised April 23, 2009)



Page: 1 of 1



Reproduced by HILTI, Inc. Courtesy of Underwriters Laboratories, Inc. May 31, 2007



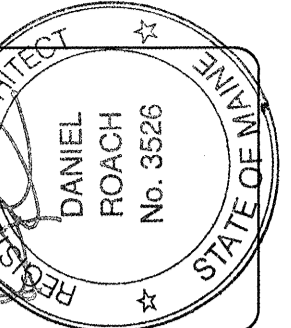
Page: 1 of 2



Reproduced by HILTI, Inc. Courtesy of Underwriters Laboratories, Inc. May 31, 2007



Page: 2 of 2



lenity architecture
3150 Kettle Cove, SE, Salem, Oregon 97301
P: 503 599 1090 F: 503 599 0685 www.lenityarchitecture.com

COLSON AND COLSON
GENERAL CONTRACTOR, INC.
2280 McJULIE STREET, SE SUITE 200
SALEM, OREGON, 97302
PHONE (503) 586-7401

PORTLAND
RETIREMENT RESIDENCE
802 OCEAN AVE., PORTLAND, MAINE 04103

FIRE STOPPING
AT
PENETRATION

DATE 8/28/2015

REVISED DATE

SHEET A7.7